

# VISIX VX-2S-OP-30X-IAW

VISIX 2MP PTZ WITH 30X ZOOM W/ IR, IP66/IK10 RATING, AUDIO, ALARM I/O, AND TRUE WDR



## Key Features

- » 2MP Resolution
- » Motorized Lens 4.3 to 129mm w/ 30x Zoom, 360° Pan and -5 -90° Tilt Range
- » IP66 Weather Resistant
- » IK10 Impact Protection
- » Alarm I / O
- » Dual-Stream Compression
- » H.265, H.264, MJPEG Codecs
- » 2 Year Warranty
- » NDAA Compliant

## PRODUCT NUMBERS

Available Units	Description
<b>VX-2S-OP-30X-IAW</b>	Base Camera - VISIX 2MP PTZ WITH 30X ZOOM W/ IR, IP66/IK10 RATING, AUDIO, ALARM I/O, AND TRUEWDR
<b>VX-2S-OP-30X-IAW</b>	Base Camera + Advanced Analytics License

\*The -A advanced analytics license can be added to a Base Camera at any time to unlock advanced analytics functionality. Speak to a 3xLOGIC Sales Associate for more info.

## Available Mounts



**VX-PM-BC14**  
Pendant Mount



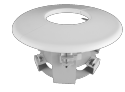
**VX-WM-BW14**  
Wall Mount



**VX-CM-BC01**  
Corner Mount



**VX-POLE-BP01**  
Pole Mount



**VX-FM-BR08**  
Flush Mount

## Hardware

<b>Image Sensor</b>	1/2.8" 2.4M CMOS	<b>Sensor Max Resolution</b>	1920(H)x1080(V)
<b>Lens</b>	4.3 ~ 129 mm F1.6 ~ F4.7	<b>Frame Rate</b>	30fps
<b>Aperture</b>	F1.6~F4.7	<b>Operating Temperature</b>	-30°~ 50°C (-22° ~ 122°F)
<b>Lens Type</b>	Motorized w/ 30x Zoom	<b>Operating Humidity</b>	10-90% RH (Non-Condensing)
<b>Angle of View</b>	D:2.58 °~71.3 °, H:2.11 °~58.9 °, V:1.61 °~45.3	<b>Impact Protection</b>	IK10
<b>MIN. Illumination</b>	0.05Lux, 0Lux with IR (F1.6)	<b>IP Rating</b>	IP66
<b>IR Distance</b>	60m (200 ft)	<b>Material</b>	Chassis: Aluminum Dome: PCR 121R
<b>Shutter Speed</b>	1/30(25) ~ 1/30,000	<b>Dimensions (W x D x H)</b>	150mm x 231mm
<b>Day &amp; Night</b>	TDN (True Day & Night)	<b>Weight</b>	2kg
<b>Wide Dynamic Range (WDR)</b>	120dB	<b>Certifications</b>	FCC Part 15, Subpart B, Class A CAN ICES-3 (A)/NMB-3(A) UL and ULC Safety CE NDAA Compliant
<b>Video Output</b>	1 CVBS 1.0V pp(75ohm)	<b>Power supply</b>	AC24V, DC24V, POE IEEE 802.3at class4
<b>Ethernet</b>	RJ45 (10/100Base-T)	<b>Power consumption</b>	AC24V : Max 35W, DC24V : Max 40W, PoE: Max 42W
<b>Internal Mic</b>	Yes	<b>Alarm In / Out</b>	1 [1.0Vms, 3K ohm]/1
<b>Audio In / Out</b>	1[1.0Vms, 3K ohm]/1	<b>Audio Compression</b>	G.711

## Software

<b>Video Compression</b>	H.265 H.264 MJPEG	<b>Event Trigger</b>	Tamper Detection, Network Disconnection, Temperature Critical
<b>Video BitRate</b>	100Kbps ~ 10Mbps	<b>Security</b>	HTTPS (SSL) IP filtering 802.1x, Digest Authentication
<b>Video Streams</b>	3840x2160p30 + 480p30 with H.264,H265 + MJPEG	<b>Protocols</b>	TCP/IP, UDP, AutoIP, RTP(UDP/TCP), RTSP, NTP, HTTP, HTTPS, SSL, DNS, DDNS, DHCP,FTP, SMTP, ICMP, SNMPv1/v2/v3(MIB 2), ONVIF
<b>Base Analytics</b>	Presence Filters (Advanced Motion), Object Tracker	<b>Sys. Compatibility</b>	CGI API, ONVIF Profile S

Dimensional Drawing

