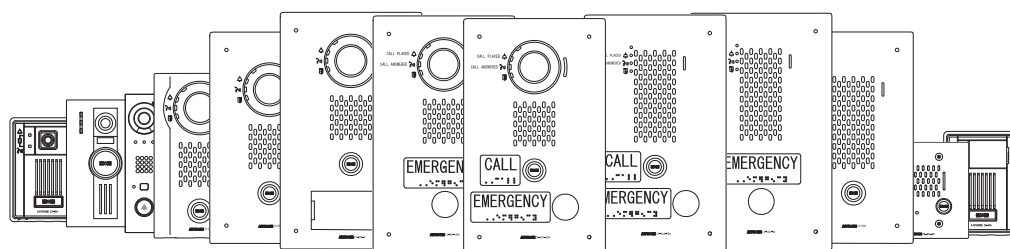
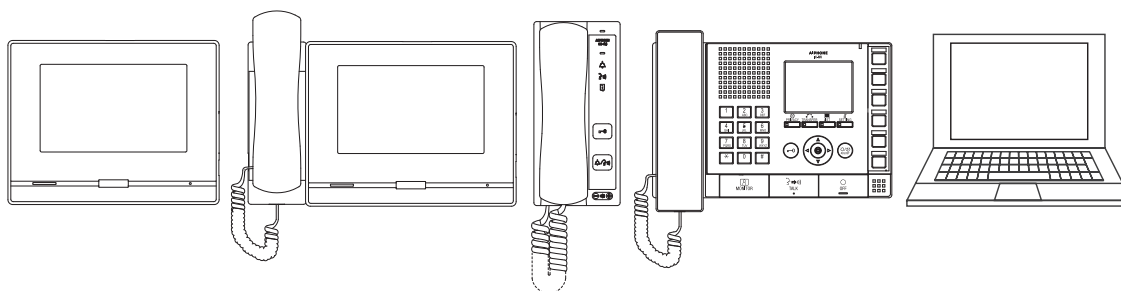


## IX SERIES

### IP Video Intercom System

## IX Series Quick Start Programming Guide

IX Support Tool  
Version 10.0.0.0 or later



### ATTENTION:

This is an abbreviated programming manual addressing basic program settings for an IX System using the IX Support Tool. A complete set of instructions (*IX Web Setting Manual / IX Operation Manual / IX Support Tool Setting Manual*) can be found at [www.aiphone.net](http://www.aiphone.net). In North America for additional literature and media, visit [www.aiphone.com/IX](http://www.aiphone.com/IX).

# General Overview

## Table of Contents

<b>Pages 3-7</b>	<b>Programming a New System</b> - Quickly creat a new system using the Support Tool Programming Wizard
<b>Page 8</b>	<b>Adding a New Station</b> - Adding a new IX station to an existing system
<b>Page 9-10</b>	<b>IXW-MA Settings</b> - Configuring the relay outputs of an IXW-MA
<b>Page 11</b>	<b>Uploading the Setting File</b>
<b>Page 12-13</b>	<b>Door Call Destinations and Master Address Book</b> - Customizing door station call-in destinations and partitioning master station Address Books
<b>Page 14-17</b>	<b>Call Transfer Settings</b> - Configuring Absent, Delayed, and Scheduled Transfers
<b>Page 18-19</b>	<b>IP Camera Integration</b> - Adding a 3rd party IP camera to a system and registering to stations
<b>Page 20-21</b>	<b>Timer Settings</b> - Adjust the default timer settings for door station call-in, communication timeout, and door release.

## Getting Started

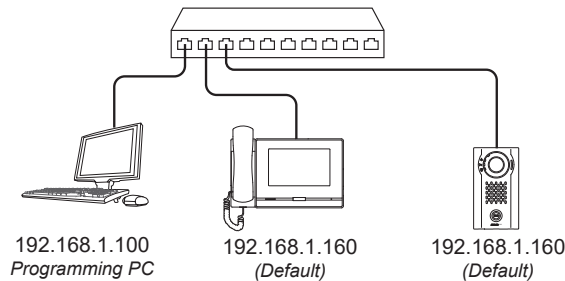
IX Series stations are set to the **default IPv4 address of 192.168.1.160**. The Support Tool programming software is designed to batch configure all IX stations simultaneously, identifying each device on the network by its MAC address. The IX Series is designed to function on managed networks, however the broadcast method used to find stations may not function properly in this environment.

It is possible that a secondary NIC card, such as a VPN or WiFi connection, may prevent Support Tool from finding stations during its station search process when attempting to associate (*page 4*) or upload to stations (*page 7*). Disabling any secondary connections before programming may prevent these issues.

When using Support Tool's programming wizard, each station is given default network and station information, and configures all stations to call, communicate, and activate door release. Additional settings are available once the programming has been completed using the wizard.

## Installation Recommendations

Place all IX Series stations on the same unmanaged, PoE network switch and wait for each station to power on before launching Support Tool. Stations programmed this way can then be removed from this environment and deployed without losing their configuration data.

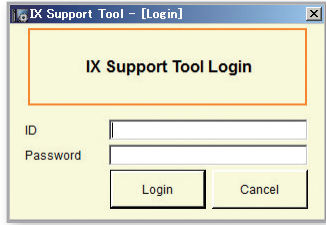


- Support Tool has been downloaded and installed.  
*Support Tool (v9.0.0.0 or later) can be downloaded from <https://www.aiphone.net/support/software-documents/ix/>*
- The PC and the IX Series stations have been connected to a PoE switch and have completed their boot up process.
- A list of Station Names, Station Numbers, and network information is gathered from the end user.
- The network environment, potential 3rd party port or IP conflicts, and access to administrative rights on the programing PC have been taken into consideration and addressed.

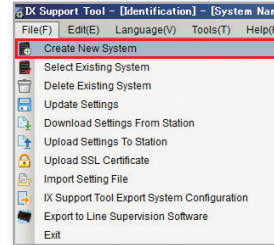
# Programming a New System

## Creating a System

To create a New System using the Programming Wizard, launch Support Tool and enter the ID and Password. If this is the first time Support Tool is launched the New System programming window will automatically open. If an existing program file is currently in use, choose **File(F) > Create New System**.



**Default Information**  
ID: admin  
Password: admin



## Step 1: System Settings

**System Name, Installer Information, Owner Information, and Notes** are customizable fields that uniquely identify the system being created.

**IP Version:** Select the IP version from the drop-down.

**Expanded System:** Select only when system capacity exceeds 500 stations.

Additionally, an Expanded System can be used when registering stations to a SIP server that requires extension numbers larger than 5 digits.

**Door Release:** Yes should be selected, even when using the IXW-MA relay adaptor.

Selecting No will disable door release and require manual configuration not covered in this document.

**System ID / Password:** Select an ID and Password that will be given to each station.

System ID cannot be set "admin" and "root". System Password cannot be set "admin".

Individual and unique and ID and Passwords can be set for each station once the Wizard programming is complete.

Enter the quantities of each station that will be part of the system. Station types without values should remain blank.

**IX-MV7-\*:** IX-MV7-HB, IX-MV7-HW, IX-MV7-HW-JP, IX-MV7-B, IX-MV7-W

**IX-DV, IX-DVF(-\*):** IX-DVF-P, IX-DVF-2RA, IX-DVF-RA

**IX-EA, EAU:** IX-EA

**IX-SSA(-\*):** IX-SSA-2RA, IX-SSA-RA

**IX-SS(-\*):** IX-SS-2RA, IX-SS-RA

**IX-RS-\*:** IX-RS-B, IX-RS-W

The following stations are only available in Japan.  
IX-EAU, IX-SPMIC, IX-DBT, IX-BBT, IX-MV7-\*T, IX-RS-\*T, IX-DVT, IX-SS-2GT, IX-EAT

# Programming a New System

## Step 2: Station Customization - Optional

Support Tool will provide each station a default Station Name, four-digit Station Number, and IP Address starting from 192.168.1.10. To edit this information, click **Station Details**. To use the default information, Click **Next**.

### System Configuration

1. Select the setting file to be linked with the chosen station:

Station Settings List							
Select	Number	Name	Location	Station Type	Hostname	IP Address	Subnet Mask
<input checked="" type="radio"/>	0001	Master Station1		IX-MV7-*		192.168.1.10	255.255.255.0
<input type="radio"/>	0002	Master Station2		IX-MV7-*		192.168.1.11	255.255.255.0
<input type="radio"/>	0003	Master Station3		IX-MV		192.168.1.12	255.255.255.0
<input type="radio"/>	0004	PC Master Station1		IX-SOFT		192.168.1.13	255.255.255.0
<input type="radio"/>	0005	Video Station1		IX-DV, IX-DVF(-*)		192.168.1.14	255.255.255.0
<input type="radio"/>	0006	Video Station2		IX-DA		192.168.1.15	255.255.255.0
<input type="radio"/>	0007	Audio Station1		IX-SS-2G		192.168.1.16	255.255.255.0
<input type="radio"/>	0008	Handset Sub Station1		IX-RS-*		192.168.1.17	255.255.255.0
<input type="radio"/>	0009	I/O Adaptor1		IXW-MA		192.168.1.18	255.255.255.0

Advanced Settings

Address Book

Door Release

Station Details

Batch IP Address Configuration

System Management

Add New Station

Station Removal

**Note:**

Door release settings will be automatically configured unless otherwise disabled manually.

**Station Details**

Edit Number, Name, and IP Address by clicking on **Station Details**.

**Address Book**

Select which stations are displayed in each Master Station's address book.

**Door Release**

Individually partition, enable, or disable door release access. *(enabled by default)*

**Batch IP Address Configuration**

Batch configure network information by station type or for all stations.

Optional Settings

### Editing Default Station Details (Optional)

Clicking **Station Details** will open a second screen where the default system information, the addressing method can be changed to DHCP, and Hostnames can be added. Click, **OK** to continue.

### Station Details

Row

Previous

Next

Display

Changing the IP Address, Subnet Mask, IP Version, Static / DHCP will require a restart. Once associated, the setting file will also need to be uploaded to the station(s).

Locations must be created in the Location Registry before they can be assigned.

Text in red are required settings.

#	Station Information				Network Settings										
	Identification				IP Address										
	Number	Name	Location	Station Type	Hostname	IP Version	Static / DHCP	IPv4 Address							
								IP Address				Subnet Mask			
								1	2	3	4	1	2	3	4
0001	0001	Master Stations1		IX-MV7-*		IPV4	Static	192	168	1	10	255	255	255	0
0002	0002	Master Stations2		IX-MV7-*		IPV4	Static	192	168	1	11	255	255	255	0
0003	0003	Master Stations3		IX-MV		IPV4	Static	192	168	1	12	255	255	255	0
0004	0004	Video Stations1		IX-DV, IX-DVF(-*)		IPV4	Static	192	168	1	13	255	255	255	0

Location Registry

OK

Cancel

**Note:**

Changes made during this step will not be applied until the programming process has been completed.

**Station Number:** 3-5 Digits

**Station Name:** 24 characters max

**Static / DHCP:** Connection to the DHCP server by the programming PC is required to assign IP addresses to each station. *If this is not possible, speak to the network administrator about DHCP reservations and assign these reservations statically.*

**Hostname:** Do not enter a Hostname if an IPv4 or IPv6 address is already set for the station.

**IP Address and Subnet Mask:** IX-SOFT and PC running the IX-SOFT must share the same IP Address and Subnet Mask.

4 | IX Series Quick Start Programming Guide

# Programming a New System

## Step 3: Association

The association process is where the station information created in the previous steps (Station Setting List) is associated with a station found on the network (Station List). Choose one of two methods, Automatic (*recommended*) or Manual.

Once associated, the station will receive its Station Name and network information after a short power cycle, but a final upload of the setting file will be needed before the stations are functional.

### Automatic (Recommended)

Clicking the **Associate Automatically** button will pair station configurations from the Station Settings List to physical stations of the same type found on the Station List below. **If IX-SOFT is installed on the programming PC, it must be closed to search for and associate physical stations.** Refer to the notes below for steps on searching and associating IX-SOFT.

**IX-SOFT:** Ensure that the IX-SOFT application is installed and open on all PCs before continuing. Once all instances of IX-SOFT are installed and open, place a check mark next to Search for IX-SOFT on this PC (found below the Station List) and click **Station Search** to search again. Click **Associate Automatically** a final time to associate IX-SOFT.

**System Configuration**

1. Select the setting file to be linked with the chosen station:

Select	Number	Name	Location	Station Type	Hostname	IP Address	Subnet Mask	Associated
<input checked="" type="radio"/>	0001	Master Station1		IX-MV7-*		192.168.1.10	255.255.255.0	-
<input type="radio"/>	0002	Master Station2		IX-MV7-*		192.168.1.11	255.255.255.0	-
<input type="radio"/>	0003	Master Station3		IX-MV		192.168.1.12	255.255.255.0	-
<input type="radio"/>	0004	PC Master Station1		IX-SOFT		192.168.1.13	255.255.255.0	-
<input type="radio"/>	0005	Video Station1		IX-DV, IX-DVF(-*)		192.168.1.14	255.255.255.0	-
<input type="radio"/>	0006	Video Station2		IX-DA		192.168.1.15	255.255.255.0	-
<input type="radio"/>	0007	Audio Station1		IX-SS-2G		192.168.1.16	255.255.255.0	-
<input type="radio"/>	0008	Handset Sub Station1		IX-RS-*		192.168.1.17	255.255.255.0	-
<input type="radio"/>	0009	I/O Adaptor1		IXW-MA		192.168.1.17	255.255.255.0	-

2. Select the station to associate with the setting file.

Enter station MAC address:   Different Networks

Search and select station within local network: Station Search Protocol IPv4

Select	Number	Name	Location	Station Type	MAC address	Associated
<input checked="" type="radio"/>				IX-MV7-*	00:0B:AA:2F:02:1A	-
<input type="radio"/>				IX-MV7-*	00:0B:AA:2F:01:AE	-
<input type="radio"/>				IX-MV	00:0B:AA:17:1B:BA	-
<input type="radio"/>				IX-DV, IX-DVF(-*)	00:0B:AA:28:06:75	-
<input type="radio"/>				IXW-MA	00:0B:AA:2E:00:01	-
<input type="radio"/>				IX-RS-*	00:0B:AA:2D:00:14	-
<input type="radio"/>				IX-SS-2G	00:0B:AA:2C:01:BA	-
<input type="radio"/>				IX-DA, IX-DF(-*)	00:0B:AA:16:04:B7	-

Search for IX-SOFT on this PC

**Note:**  
 The Station Settings List is the list of stations created by the previous steps. The Station List is the list of stations found on the network.

**Associate**  
 Click **Associate Automatically**.

**Station List**  
 Stations not shown on the Station List cannot be found by Support Tool. Verify their physical connection, that they have power (PoE), and refer to Page 2 for more information as to why they may not be shown. Click **Station Search** to search the network again.

Scroll Down

Scroll Down

Select	Number	Name	Location	Station Type	IP Address	MAC address	Status
<input checked="" type="checkbox"/>	0001	Master Stations1		IX-MV7-*	192.168.1.10	00:0B:AA:2F:02:1A	Success
<input type="checkbox"/>	0002	Master Stations2		IX-MV7-*	192.168.1.11	00:0B:AA:2F:01:AE	Success
<input type="checkbox"/>	0003	Master Stations3		IX-MV	192.168.1.12	00:0B:AA:17:1B:BA	Success
<input type="checkbox"/>	0004	Video Stations1		IX-DV, IX-DVF(-*)	192.168.1.13	00:0B:AA:28:06:75	Success
<input type="checkbox"/>	0005	Video Stations2		IX-DA, IX-DF(-*)	192.168.1.14	00:0B:AA:16:04:B7	Success
<input type="checkbox"/>	0006	Audio Stations1		IX-SS-2G	192.168.1.15	00:0B:AA:2C:01:BA	Success
<input type="checkbox"/>	0007	Handset Sub Station1		IX-RS-*	192.168.1.16	00:0B:AA:2D:00:14	Success
<input type="checkbox"/>	0008	I/O Adaptor1		IXW-MA	192.168.1.17	00:0B:AA:2E:00:01	Success

**Confirming Status**  
 Scroll down and confirm each station in the Status column says **Success**. If any status shows as **Failed**, confirm their network connection and refer to their status light, then select the station and click **Retry Association**.

**Continue**  
 When all stations show **Success**, click **Next**.

Skip to Page 7 "Setting File Upload"

# Programming a New System

## Step 3: Association

### Manual

Manual Association allows the selection of a station by MAC address to pair with a station of the same type from the top Station Setting List and the Station List below it. This method is only recommended for stations that have already been deployed and their MAC Addresses noted. **If IX-SOFT is installed on the programming PC, it must be closed to search for and associate physical stations.** Refer to the notes below for steps on searching and associating IX-SOFT.

**IX-SOFT:** Ensure that the IX-SOFT application is installed and open on all PCs before continuing. Once all instances of IX-SOFT are installed and open, place a check mark next to Search for IX-SOFT on this PC (found above the Station List) and click **Station Search** to search again. Click **Apply** to associate IX-SOFT in the same way as the physical stations.

#### Select

Select a station configuration from the Station Settings List.

### System Configuration

1. Select the setting file to be linked with the chosen station:

Select	Number	Name	Location	Station Type	Hostname	IP Address	Subnet Mask	Associated
<input checked="" type="radio"/>	0001	Master Station1		IX-MV7-*		192.168.1.10	255.255.255.0	-
<input type="radio"/>	0002	Master Station2		IX-MV7-*		192.168.1.11	255.255.255.0	-
<input type="radio"/>	0003	Master Station3		IX-MV		192.168.1.12	255.255.255.0	-
<input type="radio"/>	0004	PC Master Station1		IX-SOFT		192.168.1.13	255.255.255.0	-
<input type="radio"/>	0005	Video Station1		IX-DV, IX-DVF(-*)		192.168.1.14	255.255.255.0	-
<input type="radio"/>	0006	Video Station2		IX-DA		192.168.1.15	255.255.255.0	-
<input type="radio"/>	0007	Audio Station1		IX-SS-2G		192.168.1.16	255.255.255.0	-
<input type="radio"/>	0008	Handset Sub Station1		IX-RS-*		192.168.1.17	255.255.255.0	-
<input type="radio"/>	0009	I/O Adaptor1		IXW-MA		192.168.1.18	255.255.255.0	-

#### Note:

The Station Settings List is the list of stations created by the previous steps. The Station List is the list of stations found on the network.

#### Select

Select a discovered station from the Station List to associate to.

Search and select station within local network: Station Search Protocol: IPv4

Select	Number	Name	Location	Station Type	MAC address	Associated
<input checked="" type="radio"/>				IX-MV7-*	00:0B:AA:2F:02:1A	-
<input type="radio"/>				IX-MV7-*	00:0B:AA:2F:01:AE	-
<input type="radio"/>				IX-MV	00:0B:AA:17:1B:BA	-
<input type="radio"/>				IX-DV, IX-DVF(-*)	00:0B:AA:28:06:75	-
<input type="radio"/>				IXW-MA	00:0B:AA:2E:00:01	-
<input type="radio"/>				IX-RS-*	00:0B:AA:2D:00:14	-
<input type="radio"/>				IX-SS-2G	00:0B:AA:2C:01:BA	-
<input type="radio"/>				IX-DA, IX-DF(-*)	00:0B:AA:16:04:87	-

Search for IX-SOFT on this PC

#### Associate

Click **Apply** to associate the selected station with the selected file. Repeat until all stations are associated.

Scroll Down

Scroll Down

Select	Number	Name	Location	Station Type	IP Address	MAC address	Status
<input type="checkbox"/>	0001	Master Stations1		IX-MV7-*	192.168.1.10	00:0B:AA:2F:02:1A	Success
<input type="checkbox"/>	0002	Master Stations2		IX-MV7-*	192.168.1.11	00:0B:AA:2F:01:AE	Success
<input type="checkbox"/>	0003	Master Stations3		IX-MV	192.168.1.12	00:0B:AA:17:1B:BA	Success
<input type="checkbox"/>	0004	Video Stations1		IX-DV, IX-DVF(-*)	192.168.1.13	00:0B:AA:28:06:75	Success
<input type="checkbox"/>	0005	Video Stations2		IX-DA, IX-DF(-*)	192.168.1.14	00:0B:AA:16:04:87	Success
<input type="checkbox"/>	0006	Audio Stations1		IX-SS-2G	192.168.1.15	00:0B:AA:2C:01:BA	Success
<input type="checkbox"/>	0007	Handset Sub Station1		IX-RS-*	192.168.1.16	00:0B:AA:2D:00:14	Success
<input type="checkbox"/>	0008	I/O Adaptor1		IXW-MA	192.168.1.17	00:0B:AA:2E:00:01	Success

Remove Association
Retry Association

Back
Next
Cancel

#### Confirming Status

Scroll down and confirm each station in the Status column says **Success**. If any status shows as **Failed**, confirm their network connection and refer to their status light, then select the station and click **Retry Association**.

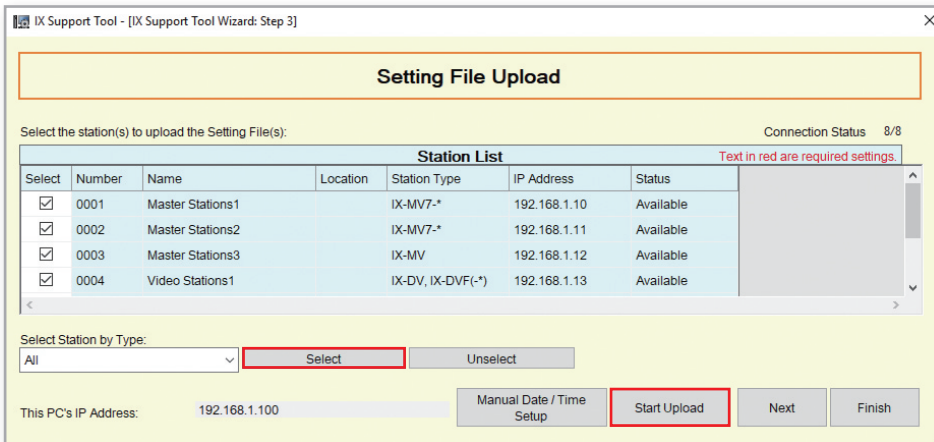
#### Continue

If all stations show **Success**, click **Next**.

# Programming a New System

## Step 4: Setting File Upload

Once each station has been associated with its individual station information, the setting file containing the rest of the system's configuration will need to be uploaded to each station. **To upload the setting file, the programming PC will need to be in the same subnet as the associated stations (refer to Step 3).**



### Select Stations

Stations can be selected individually, or by Type. Choose **All** from the **Select Station by Type** drop-down menu to upload to all stations. And, click **Select**.

### Start Upload

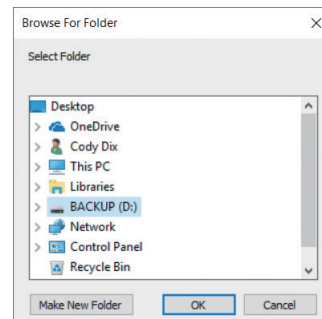
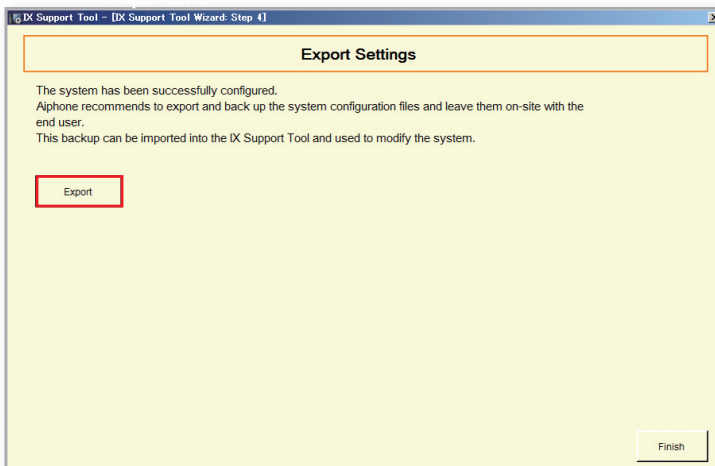
Click **Start Upload** once all stations show an Available status. This may take several minutes as the stations complete their boot up process after association.

### Continue

Once all stations have been uploaded to click **Next**.

## Step 5: Export Settings

The final step of the Programming Wizard is to create a copy of the system's configuration file and export it to a secure location or external drive. This final step is critical in the ongoing maintenance of the system that has been created. If settings are to be changed in the future, or new stations are to be added, this configuration file is required to do so.



### Select Folder

Select location to save the file then click **OK**.

### Export

Click **Export** to select a location to save the system's configuration file.

### Finish

Lastly, once the configuration file has been saved, click **Finish**.

### Important:

If the original program file is lost, or Support Tool is moved to a different PC, this copy can be used to access the system programming to add or remove a station, or to make programming changes.

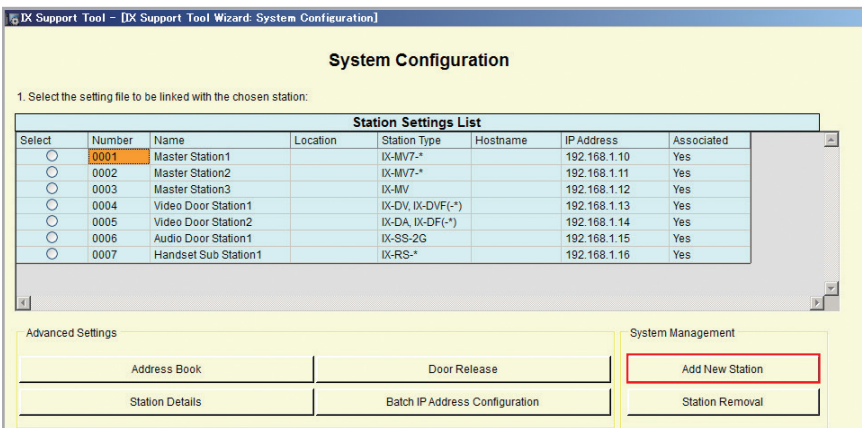
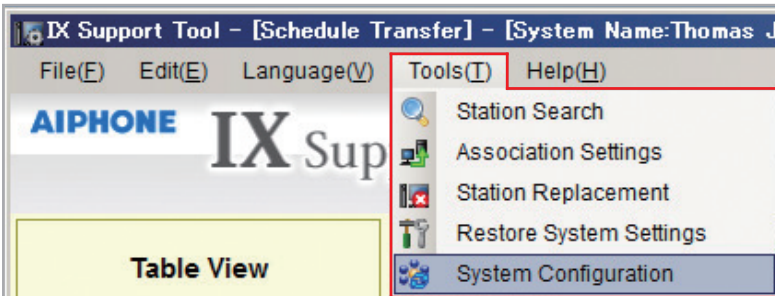
# Adding a New Station

## Getting Started

Adding a new station to an existing system requires having the system configuration file open in Support Tool and a network connection to all existing stations. The new station should be connected to the network and completed its initial boot up process before starting step one.

### Step 1: Opening the System Configuration Settings

From the top menu bar, click **Tools(T)** and select **System Configuration**.

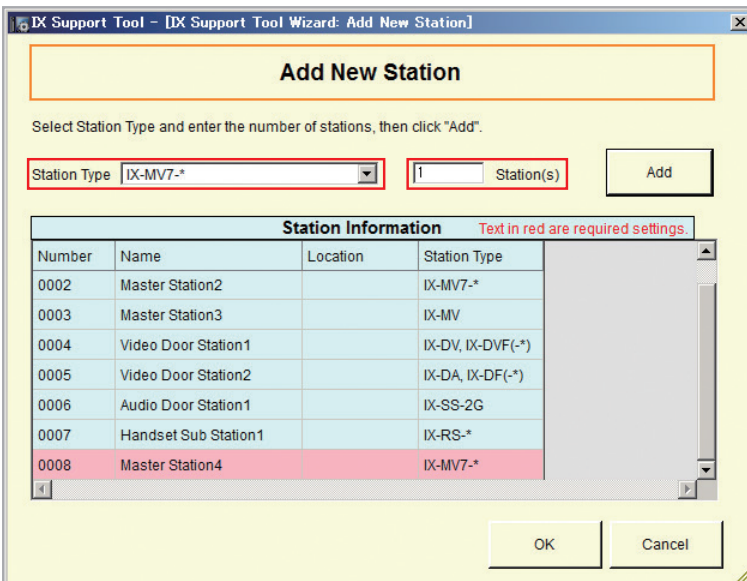


**Add New Station**

Click **Add New Station**.

### Step 2: Adding a New Station

Multiple stations and station types can be added on the Add New Station screen.



**Station Type**

Use the Station Type drop-down menu to select the Station Type of the new station.

**Station Quantities**

Enter the quantities of stations that are being added to the system.

**Add the station(s)**

Click **Add** to add the station(s) to the Station Information table below.

**Finished**

Click **OK** once all stations of each Station Type has been added.

**Note:**

Refer to page 4 and continue through page 7 to complete the steps for editing the station information, association, and uploading the setting files.



# IXW-MA Settings

## Getting Started

The IXW-MA is an IP relay with 10 configurable outputs that can be remotely triggered by a station based on status conditions defined in Support Tool. Typically, these outputs are used for remote door release or external signalling activation. The following steps detail the configuration for **using the outputs of the IXW-MA for door release**.

These steps should be followed if the IXW-MA was included when creating a new system. If the IXW-MA needs to be added to the system, refer to page 8 (Adding a New Station) and return to this section once complete.

### Step 1: SIF Settings

Expand **Function Settings** on the left-hand side menu and select **SIF**. Note that the SIF event trigger for door release is sent by the door station, and not the master station, so the following steps use door stations as examples. Enter the information shown below for each door station that requires remote activation for door release. This step allows communication between the IXW-MA and IX Series door and master stations.

**Table View**

---

**Station View**

- Station Information
- Network Settings
- System Information
- Call Settings
- Option Input / Relay Output Settings
- Paging Settings
- Function Settings**
  - Door Release
  - Network Camera Integration
  - Paging Settings
  - Bathroom Call
  - Email
  - CGI
  - SIF**
  - Record
  - Communication Audio Mess
  - Chime
  - CSR
  - SSL Certificate
  - IEEE 802.1X
  - Display Mode

Station Information				Function Settings								
Identification				SIF								
#	Number	Name	Location	Station Type	SIF Functionality	SIP URI Format	No.01					
							Program Type	IPv4	IPv6	Destination Port	SSL	Connection
0001	0001	Master Stations1		IX-MV7-*	Disable	Disable						
0002	0002	Master Stations2		IX-MV7-*	Disable	Disable						
0003	0003	Master Stations3		IX-MV	Disable							
0004	0004	Video Stations1		IX-DV, IX-DVF(-)	Enable	Disable	0100	192.168.1.17		65014	Enable	Socket
0005	0005	Video Stations2		IX-DA, IX-DF(-)	Disable							
0006	0006	Audio Stations1		IX-SS-2G	Enable	Disable	0100	192.168.1.17		65014	Enable	Socket
0007	0007	Handset Sub Station1		IX-RS-*	Disable	Disable						
0008	0008	I/O Adaptor1		IXW-MA	Disable	Disable						

**SIF Functionality:** Enable for each station interacting with the IXW-MA.  
**Program Type:** 0100 for each station.  
**IPv4:** Enter the IP address of the IXW-MA.  
**Destination Port / SSL:** 65014 when SSL is Enabled (65013 when SSL is Disabled)  
**Connection:** Socket



While still on the **Function Settings > SIF** screen, scroll right to find **Change Contact**.

**AIPHONE IX Support Tool**

Category: Video Station Station Type: IX-DV, IX-DVF(-)

Table View | Row | Previous | Next | [Display Settings] | [Move to Related Settings] | [Related Settings] | [Update]

Enter Number | Display | No.01 | Event View Selection | SIF Functionality | Upload SIF File | Download SIF File

Station Information				Function Settings							
Identification				SIF							
#	Number	Name	Location	Station Type	Transmission Trigger						
					Begin Outgoing Call	Begin Communication (Source)	Door Release Indication	End Communication	Change Contact		
0001	0001	Master Stations1		IX-MV7-*	<input type="checkbox"/>	<input type="checkbox"/>	<input type="checkbox"/>	<input type="checkbox"/>	<input type="checkbox"/>	<input type="checkbox"/>	
0002	0002	Master Stations2		IX-MV7-*	<input type="checkbox"/>	<input type="checkbox"/>	<input type="checkbox"/>	<input type="checkbox"/>	<input type="checkbox"/>	<input type="checkbox"/>	
0003	0003	Master Stations3		IX-MV	<input type="checkbox"/>	<input type="checkbox"/>	<input type="checkbox"/>	<input type="checkbox"/>	<input type="checkbox"/>	<input type="checkbox"/>	
0004	0004	Video Stations1		IX-DV, IX-DVF(-)	<input type="checkbox"/>	<input type="checkbox"/>	<input type="checkbox"/>	<input type="checkbox"/>	<input type="checkbox"/>	<input checked="" type="checkbox"/>	
0005	0005	Video Stations2		IX-DA, IX-DF(-)	<input type="checkbox"/>	<input type="checkbox"/>	<input type="checkbox"/>	<input type="checkbox"/>	<input type="checkbox"/>	<input type="checkbox"/>	
0006	0006	Audio Stations1		IX-SS-2G	<input type="checkbox"/>	<input type="checkbox"/>	<input type="checkbox"/>	<input type="checkbox"/>	<input type="checkbox"/>	<input checked="" type="checkbox"/>	
0007	0007	Handset Sub Station1		IX-RS-*	<input type="checkbox"/>	<input type="checkbox"/>	<input type="checkbox"/>	<input type="checkbox"/>	<input type="checkbox"/>	<input type="checkbox"/>	
0008	0008	I/O Adaptor1		IXW-MA	<input type="checkbox"/>	<input type="checkbox"/>	<input type="checkbox"/>	<input type="checkbox"/>	<input type="checkbox"/>	<input type="checkbox"/>	

**Change Contact**

Check the **Change Contact** box for each station that will communicate with the IXW-MA.

**Update**

Click **Update** to save the SIF and Change Contact settings.

# IXW-MA Settings

## Step 2: IXW-MA Relay Output Configuration

Expand **Option Input / Relay Output Settings** on the left-hand side menu and click **Relay Output**.

Station Information		Option Input / Relay Output Settings				
Identification				Relay Output		
#	Number	Name	Location	Station Type	Relay Output 1	
					Name	Function
0001	0001	Master Stations1		IX-MV7-*		Door Release
0002	0002	Master Stations2		IX-MV7-*		Door Release
0003	0003	Master Stations3		IX-MV		Door Release
0004	0004	Video Stations1		IX-DV, IX-DVF(-)		Door Release
0005	0005	Video Stations2		IX-DA, IX-DF(-)		Door Release
0006	0006	Audio Stations1		IX-SS-2G		Door Release
0007	0007	Handset Sub Station1		IX-RS-*		Door Release
0008	0008	I/O Adaptor1		IXW-MA		Contact Change SIF Event

**Relay Output Selection**  
Use the Relay Output drop-down menu under **[Display Settings]** to select a relay output.  
*Default set to Relay Output 1*

**Function**  
Use the Function drop-down menu to select **Contact Change SIF Event** for the IXW-MA.

Scroll Right →

Scroll Right →

Station Information		Option Input / Relay Output Settings						
Identification				Relay Output				
#	Number	Name	Location	Station Type	Relay Output 1			
					Contact Change Station List	Option Relay Control	Output Time Range	Output Time
0001	0001	Master Stations1		IX-MV7-*		Disable	200-2000 [msec]	400
0002	0002	Master Stations2		IX-MV7-*		Disable	200-2000 [msec]	400
0003	0003	Master Stations3		IX-MV7-*		Disable	200-2000 [msec]	400
0004	0004	Video Stations1		IX-DV, IX-DVF(-)		Disable	200-2000 [msec]	400
0005	0005	Video Stations2		IX-DV, IX-DVF(-)		Disable	200-2000 [msec]	400
0006	0006	Audio Stations1		IX-SSA(-)		Disable	200-2000 [msec]	400
0007	0007	Handset Sub Station1		IX-RS-*		Disable	200-2000 [msec]	400
0008	0008	I/O Adaptor1		IXW-MA	Open	Disable	200-2000 [msec]	400

Select	Number	Name	Location	Station Type
<input type="radio"/>	0001	Master Stations1		IX-MV7-*
<input type="radio"/>	0002	Master Stations2		IX-MV7-*
<input type="radio"/>	0003	Master Stations3		IX-MV
<input checked="" type="radio"/>	0004	Video Stations1		IX-DV, IX-DVF(-)
<input type="radio"/>	0005	Video Stations2		IX-DA, IX-DF(-)
<input type="radio"/>	0006	Audio Stations1		IX-SS-2G
<input type="radio"/>	0007	Handset Sub Station1		IX-RS-*
<input type="radio"/>	0008	I/O Adaptor1		IXW-MA

**Contact Change SIF Event**  
Scroll the window to the right to find the **Contact Change SIF Event** column, and click **Open**.

**Select a Station**  
In the popup window, select the station to trigger the chosen output on the IXW-MA, then click **OK**.

**Update**  
Click **Update** to save the settings.

## Step 3: Relay Output Time (Optional)

To allow individual output times for the up to 10 relay outputs, the IXW-MA output times reflect the timer settings of the station interacting with it.

Station Information		Option Input / Relay Output Settings						
Identification				Relay Output				
#	Number	Name	Location	Station Type	Relay Output 1			
					Contact Change Station List	Option Relay Control	Output Time Range	Output Time
0001	0001	Master Stations1		IX-MV7-*		Disable	200-2000 [msec]	400
0002	0002	Master Stations2		IX-MV7-*		Disable	200-2000 [msec]	400
0003	0003	Master Stations3		IX-MV7-*		Disable	200-2000 [msec]	400
0004	0004	Video Stations1		IX-DV, IX-DVF(-)		Disable	200-2000 [msec]	400
0005	0005	Video Stations2		IX-DV, IX-DVF(-)		Disable	200-2000 [msec]	400
0006	0006	Audio Stations1		IX-SSA(-)		Disable	200-2000 [msec]	400
0007	0007	Handset Sub Station1		IX-RS-*		Disable	200-2000 [msec]	400
0008	0008	I/O Adaptor1		IXW-MA	Open	Disable	200-2000 [msec]	400

**Output Time Range**  
For the interacting station, use the drop-down for **Output Time Range** to choose between milliseconds (*msec*) and seconds (*sec*).

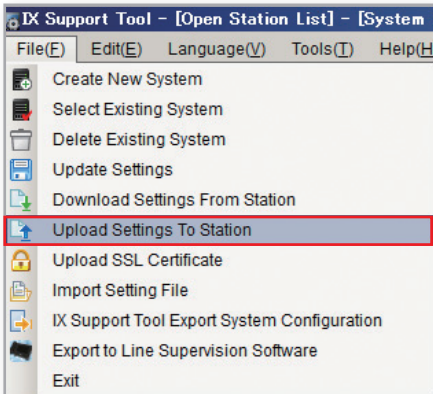
**Output Time**  
After selecting a range, chose the amount of time for the relay to activate.

**Update**  
Click **Update** to save the settings.

# Uploading the Setting File

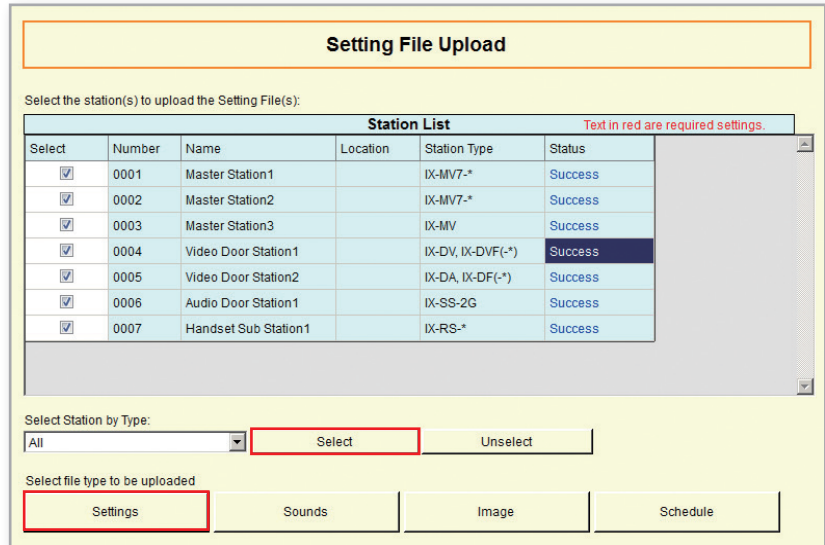
## Setting File Upload

The final step after configuring new settings, or making changes to existing settings, is to upload the setting file to all stations. If the setting files are not uploaded, any changes made in Support Tool will not be reflected on the station(s).



### Upload Settings To Station

From the menu bar, select File then Upload Settings To Station.



### Select Stations

Click **Select** to check all stations in the system.

### Upload Settings

Click **Settings** to begin the upload process.

### Other Uploads (Optional)

Click the respective button if custom Sounds, Images, or Schedules were configured.

## Upload Status

If the status shows Failed, ensure the programming PC is in the same subnet as the IX Stations it is uploading to (page 3), and that the stations are powered on and available (solid status light on the station).

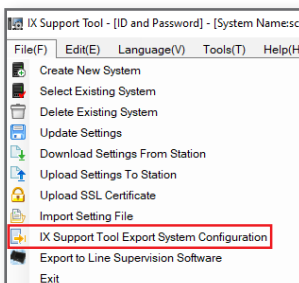
A status of Changes Required will be accompanied by a popup explaining "**Station vulnerabilities detected**". This is due to missing or insufficient passwords. To review the set ID and Passwords, expand Station Information on the left hand side window and select ID and Password.

The **User**, **ONVIF**, and **RTSP** passwords can be left blank. Update these settings, and upload again.

## Export Settings

A copy of the system's configuration file should be exported to a secure location or external drive. This step is critical for the ongoing maintenance of this system. If settings are to be changed in the future, or new stations are to be added, this configuration file is required to do so.

To export the file, click on **File** at the top of the screen and select **IX Support Tool Export System Configuration**.



### Export

Click **Export** to select a location to save the system's setting file.

### Select Folder

Select location to save the file then click **OK**.

### Finish

Lastly, once the setting file has been saved, click **Finish**.

# Door Call Destinations and Master Address Book

## Getting Started

Setting stations to only call or communicate to other stations within a system is possible through configuring call lists and Address Books for doors and master stations, respectively. The following steps are explained for systems that have already completed the setup process shown on pages 3-7.

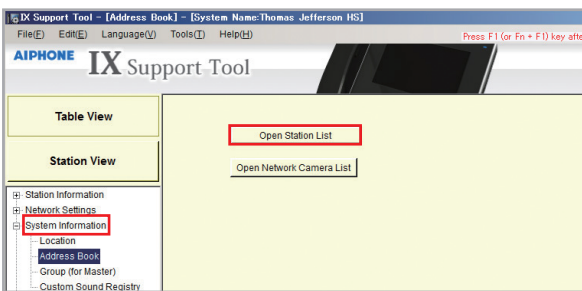
### Master Station Address Book

A master station's Address Book contains the station information of each station in the system by default. A station must be in the Address Book of a master station if it is to call it directly (*manually or by Speed Dial*), activate the door release of that station, transfer that call to another station, and other station specific features.

**This is NOT a requirement for setting door station call-in destinations (*which doors call which masters*), detailed on the next page. If Address Book partitioning is not needed, refer to page 13.**

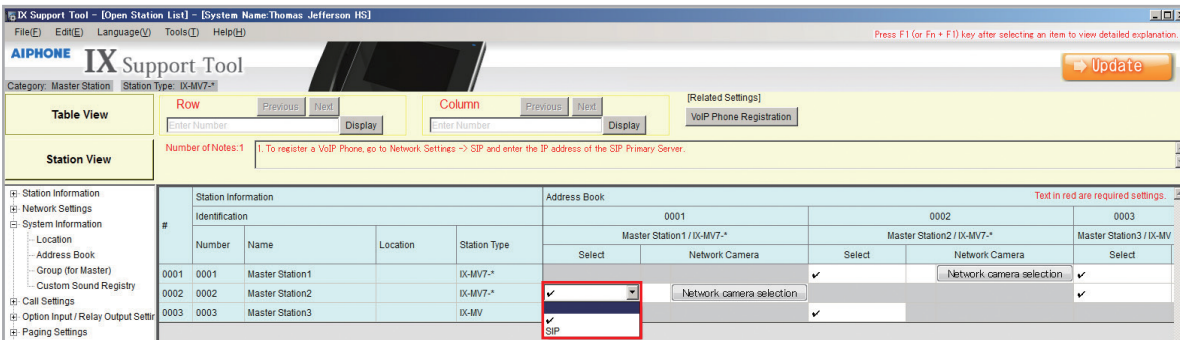
## Station Types: IX-MV, IX-MV7-\*, IX-SOFT

Expand System Information on the left-hand menu and select Address Book.



**Open Station List**  
Click **Open Station List**.

Displayed will be a row of master stations that are part of the system, and columns of stations with check marks indicating that they are in that station's Address Book. By default, all stations will be in each master station's Address Book. To remove a station from an Address Book, the check mark will need to be removed.



### Removing Stations from an Address Book

Find the cross section between the master station and the station to be removed from its Address Book. Use the drop-down menu under **Select** and change the **check mark** to the **Blank** selection.

### Update

Click the **Update** button save the changes.

# Door Call Destinations and Master Address Book

## Door/Sub Station Call Destinations

Expand **Call Settings** on the left-hand menu and select **Called Stations (Door/Sub Stations)**.

Displayed will be a row of door/sub stations that are part of the system, and columns of stations they are able to communicate with. By default, all door/sub stations are set to call every master station. Note the Station Type for the next step.

### Station Types: IX-DV, IX-DVF(-\*), IX-DVM, IX-EA, IX-SSA(-\*), IX-SS-2G, IX-RS-\*

**Table View**

---

**Station View**

- [-] Station Information
- [-] Network Settings
- [-] System Information
- [-] **Call Settings**
  - [-] Station Information
  - [-] Called Stations (Master Station)
  - [-] **Called Stations (Door/Sub Stations)**
  - [-] Call Origination
  - [-] Incoming Call

Door/Sub Stations] - [System Name:QSG\_EN]

Tools(T) Help(H) Press F1 (or Fn + F1) key after selecting an item to view detailed explanation

**Door Tool** Update

ve: IX-DV, IX-DVF(-\*)

Row:     Column:     [Display Settings] Group 01 [Related Settings] VoIP Phone Registration

Number of Notes: 5 1. U = Unicast, M = Multicast  
If designating "M", multicast IP addresses must be configured for the station(s).

Station Information					Call Settings			
Identification					Called Stations (Door/Sub Stations)			
#	Number	Name	Location	Station Type	Total	Group 01		
					Number / Name / Station Type			
0005	0005	Video Station1		IX-DV, IX-DVF(-*)	4	U	0002 / Master Station2 / IX-MV7-*	0003 / Master Station3 / IX-MV7-*
0006	0006	Video Station2		IX-DA	0			
0007	0007	Audio Station1		IX-SS-2G	4	U		
0008	0008	Handset Sub Station1		IX-RS-*	4	M		
						SIP		

**Display Settings**

Ensure that **Group 01** (default) is selected from the **Display Settings** drop-down menu at the top of the screen.

**Disabling Call-in Per Station**

Find the cross section between the door and master station communication will be enabled/disabled between. By default, there will be a **U** in the drop-down menu. Click this drop-down and select the **Blank** option.

**Update**

Click the **Update** button save the changes.

### Station Types: IX-DB, IX-BB, IX-DA, IX-BA

**Table View**

---

**Station View**

- [-] Station Information
- [-] Network Settings
- [-] System Information
- [-] **Call Settings**
  - [-] Station Information
  - [-] Called Stations (Master Station)
  - [-] **Called Stations (Door/Sub Stations)**
  - [-] Call Origination
  - [-] Incoming Call

Door/Sub Stations] - [System Name:QSG\_EN]

Tools(T) Help(H) Press F1 (or Fn + F1) key after selecting an item to view detailed explanation

**Door Tool** Update

ve: IX-DA

Row:     Column:     [Display Settings] Group 10 [Related Settings] VoIP Phone Registration

Number of Notes: 5 1. U = Unicast, M = Multicast  
If designating "M", multicast IP addresses must be configured for the station(s).

Station Information					Call Settings			
Identification					Called Stations (Door/Sub Stations)			
#	Number	Name	Location	Station Type	Total	Group 10		
					Number / Name / Station Type			
0005	0005	Video Station1		IX-DV, IX-DVF(-*)	0			
0006	0006	Video Station2		IX-DA	4	U	0002 / Master Station2 / IX-MV7-*	0003 / Master Station3 / IX-MV7-*
0007	0007	Audio Station1		IX-SS-2G	0			
0008	0008	Handset Sub Station1		IX-RS-*	0			
						M		
						SIP		

**Display Settings**

Ensure that **Group 10** is selected from the **Display Settings** drop-down menu at the top of the screen.

**Disabling Call-in Per Station**

Find the cross section between the door and master station communication will be enabled/disabled between. By default, there will be a **U** in the drop-down menu. Click this drop-down and select the **Blank** option.

**Update**

Click the **Update** button to save the changes.

**Upload:**

↑ The setting file needs to be uploaded to each station for these settings to take effect. Refer to page 12 for more details on this process.

# Call Transfer - Absent Transfer

## Getting Started

There are three types of Call Transfers: Absent, Delay, and Schedule. Before configuring transfer settings, refer to page 14 to customize door station call-in destinations and master station Address Books.

**Absent:** Calls are immediately transferred.

**Delay:** Transfer after a set amount of time.

**Schedule:** Transfer after a set time of day on specified days.

## Absent Transfer

Absent Transfer is used situationally, meant to be manually activated by pressing the **Transfer** button on the master station. If Absent Transfer is **Enabled** and activated, an incoming call will be immediately be transferred.

### Step 1: Enabling Absent Transfer

From the menu on the left, expand Transfer Settings and select Absent Transfer.

**Absent Transfer**

Use the drop-down menu to Enable Absent Transfer on a station.

**Station List**

Click Open and select the station(s) to receive the transfer, and click OK.

**Update**

Click the Update button to save the changes.

### Step 2: Re-Transfer (Optional)

If the Absent Transfer destination is unavailable, **Re-Transfer Destination** allows the call to be sent to another master station with it's own transfer configuration to begin another round of transfers.

**Re-Transfer Destination**

Select the Station Number of the stations receiving the transfer, and click OK.

**Update**

Click the Update button to save the changes.

**Note:**

Re-Transfer does not begin a new **Call Timeout** countdown (*Call Settings > Call Origination*). It may be necessary to extend the call-in time to utilize this setting.

#### Upload:

↑ The setting file needs to be uploaded to each station for these settings to take effect. Refer to page 12 for more details on this process.

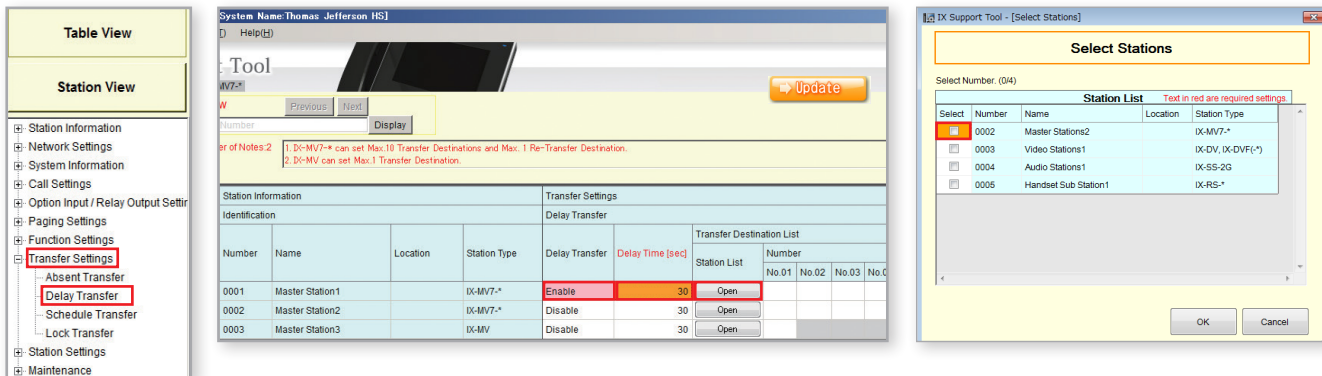
# Call Transfer - Delay Transfer

## Delay Transfer

Delay Transfer will automatically transfer an incoming call after a set amount of time.

### Step 1: Enabling Absent Transfer

From the menu on the left, expand **Transfer Settings** and select **Delay Transfer**.



**Delay Transfer**  
Use the **Delay Transfer** drop-down menu to select **Enable** or **Disable**.

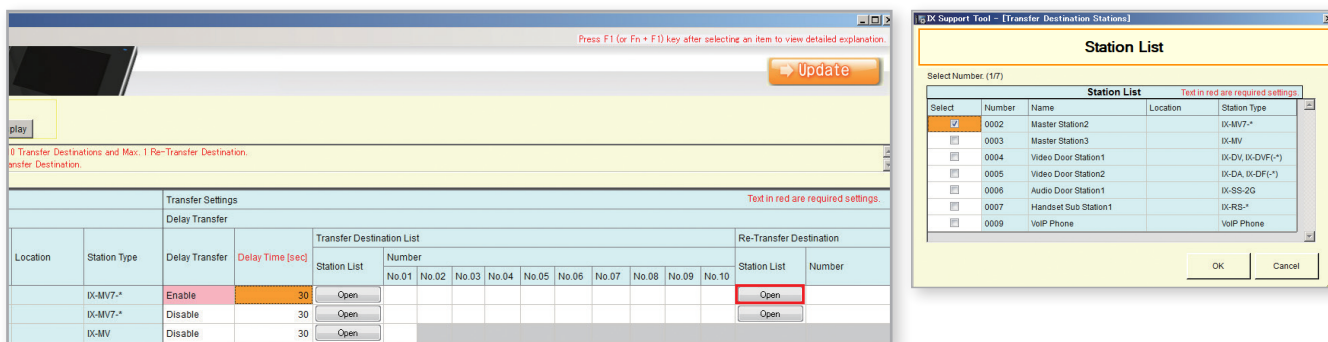
**Station List**  
Click **Open** and select the station(s) to receive the transfer, and click **OK**.

**Delay Time**  
Enter the **Delay Time** before the call is transferred.

**Update**  
Click the **Update** button to save the changes.

### Step 2: Re-Transfer (Optional)

If the Absent Transfer destination is unavailable, **Re-Transfer Destination** allows the call to be sent to another master station with it's own transfer configuration to begin another round of transfers.



**Re-Transfer Destination**  
Select the Station Number of the stations receiving the transfer, and click **OK**.

**Update**  
Click the **Update** button to save the changes.

**Note:**  
Re-Transfer does not begin a new **Call Timeout** countdown (**Call Settings > Call Origination**). It may be necessary to extend the call-in time to utilize this setting.

**Upload:**  
The setting file needs to be uploaded to each station for these settings to take effect. Refer to page 12 for more details on this process.

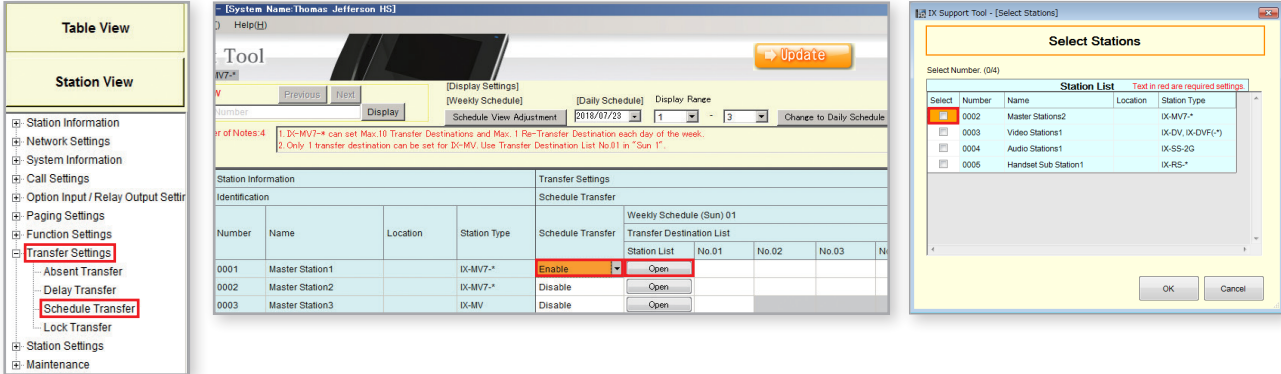
# Call Transfer - Schedule Transfer

## Schedule Transfer

Delay Transfer will automatically transfer an incoming call based on a created schedule that can be set for a specific time of day, and on a daily schedule.

### Step 1: Enabling Absent Transfer

From the menu on the left, expand **Transfer Settings** and select **Schedule Transfer**.



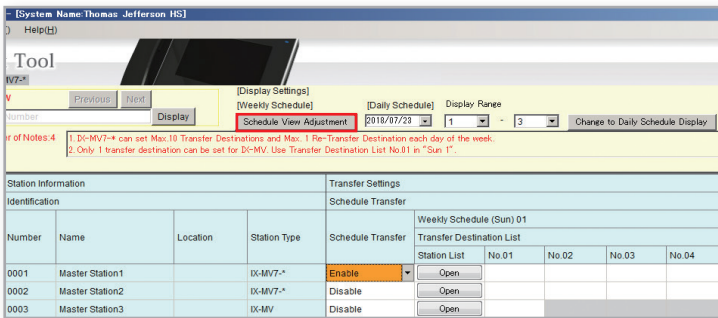
**Schedule Transfer**  
Use the drop-down menu to **Enable** Schedule Transfer.

**Station List**  
Click **Open** and select the station(s) to receive the transfer, and click **OK**.

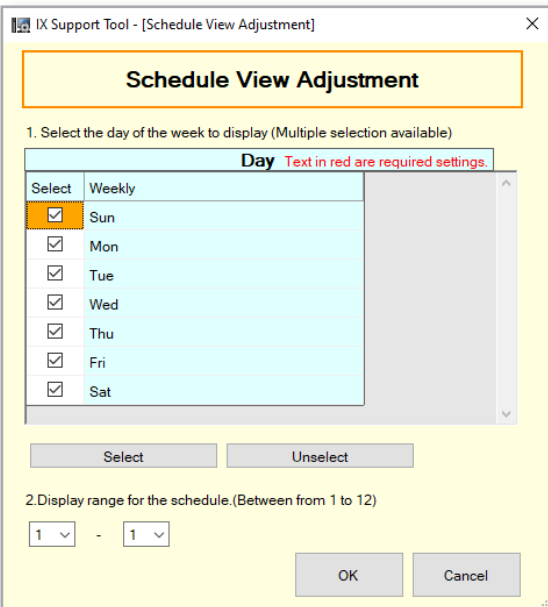
**Update**  
Click the **Update** button to save the changes.

### Step 2: Schedule View Adjustment

At the top of the Schedule Transfer settings page there are several ways to adjust what is displayed, and how it is displayed, in this section. Click **Schedule View Adjustment** to open these options.



**Station List**  
Click **Schedule View Adjustment** to open the settings window.



**Schedule View Adjustment**

**Day:** Place a check mark next to every day in which a Schedule Transfer will be used.

**Display Range:** Each day can have up to 12 individual transfer times. Use the drop-down options to choose how many of those 12 to display.

*If every day of each week are to repeat themselves, select 1 in each drop-down.*

Click **OK** to return close the window.



# Call Transfer - Schedule Transfer

## Step 2: Schedule Transfer Start and End Time

Scrolling to the right, the daily schedule will need to be created by settings a **Start and End Time** for each station and each day.

Scroll Right →

Scroll Right →

Press F1 (or Fn + F1) key after selecting an item to view detailed explanation.

[Update]

[Daily Schedule] Display Range [Move to Related Settings] Schedule Transfer

Adjustment: 2018/07/23 1 - 3 Change to Daily Schedule Display

**Note:** In this example, calls will be transferred between 8:00am and 5:00pm every Sunday.

Text in red are required settings.

Weekly Schedule (Sun) 01				Weekly Schedule (Sun) 02								
Transfer Destination List		Re-Transfer Destination		Start Time		End Time		Transfer Destination List				
No.09	No.10	Station List	Number	Hour	Minute	Hour	Minute	Station List	No.01	No.02	No.03	No.04
		Open		08	00	17	00	Open				
		Open						Open				

**Scroll Right**  
 Scroll the window to the right until the Start Time and End Time Columns are displayed.

**Start and End Time**  
 Enter a Start Time and End Time to the specific day of the week or date that the transfer is scheduled for.

**Update**  
 Click the **Update** button to save the changes.

**Upload:**  
 ↑ The setting file needs to be uploaded to each station for these settings to take effect. Refer to page 12 for more details on this process.

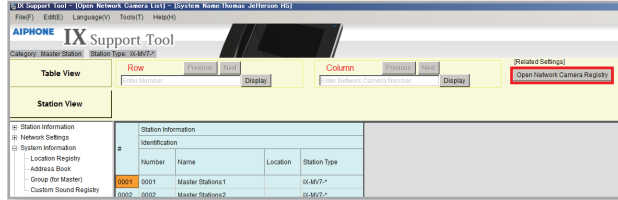
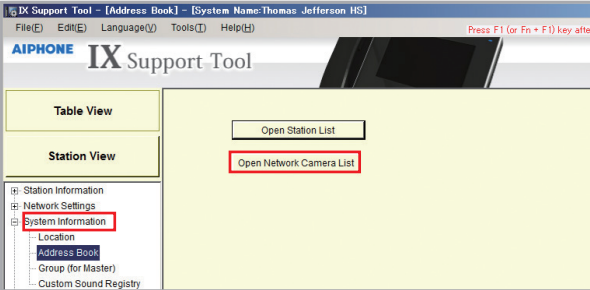
# IP Camera Integration

## Getting Started

The IX Series allows integration of IP cameras that are ONVIF profile S compliant. These cameras can be called up by either audio or audio/video stations, as well as individually monitored by master stations.

### Step 1: Opening Network Camera Registry

Network Cameras will first need to be registered in Support Tool.



#### Address Book

From the menu on the left expand System Information, and select Address Book.

#### Network Camera List

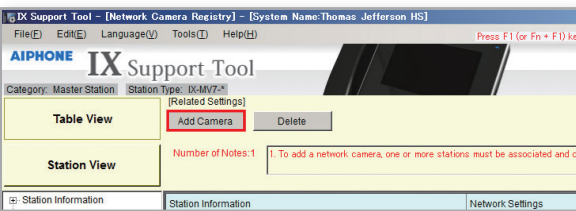
Click **Open Network Camera List**.

#### Network Camera Registry

Click **Open Network Camera Registry**.

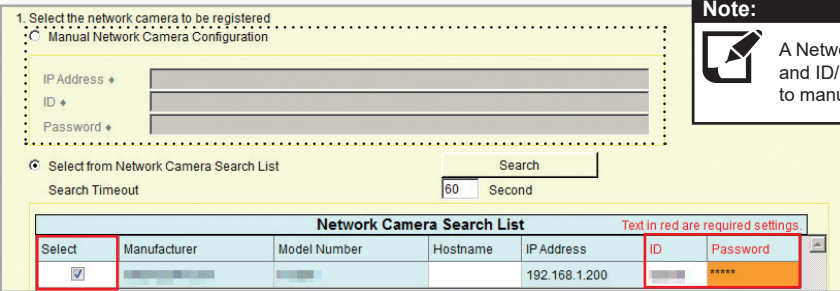
### Step 2: Registering a Network Camera

Support Tool will search for available Network Cameras on the network, and any camera found will be listed in the **Network Camera Search List**. If a known camera is not found, place the programming PC on the same network switch as the camera(s), and attempt the search again.



#### Add Camera

Select **Add Camera** and the Support Tool will search the network of all compatible network cameras.

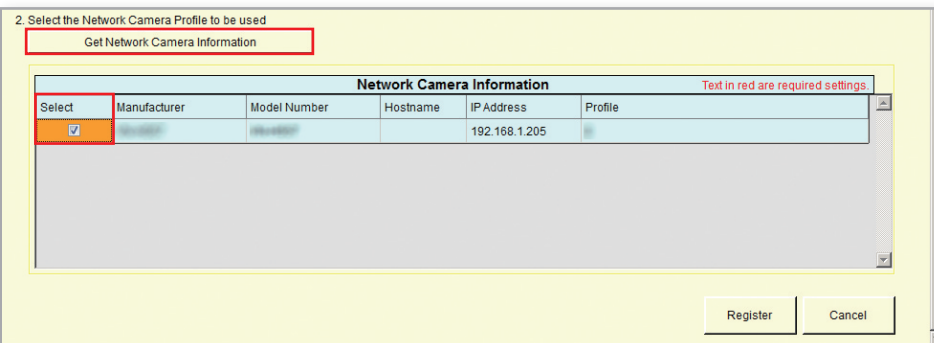


#### Note:

A Network Camera's IP Address and ID/Password may be entered to manually add the device.

#### ID and Password

Check the box of each IP camera to be register. Then, enter the ID and Password required for each selected camera.



#### IP Camera Information

Click **Get Network Camera Information** to automatically find the IP camera's video profile information.

#### Select a Profile

Check the box of each IP camera video profile to use with the system.

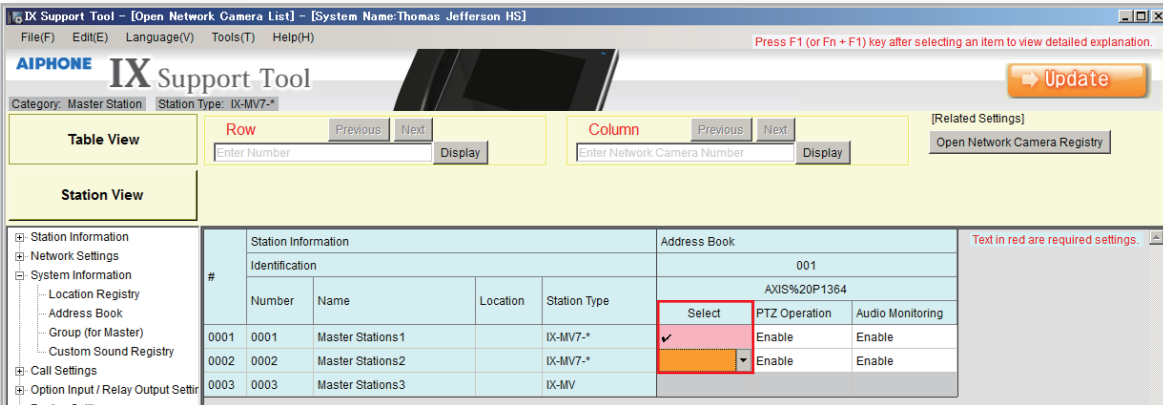
#### Register

Click **Register** to apply the selected settings and register chosen network cameras.

# IP Camera Integration

## Step 3: Registering a Network Camera to a Master Station

For a Master Station to interact with a Network Camera, either during a camera call-up or while monitoring, it must be registered to a Master Station's **Network Camera List**.



### Selecting the IP Camera

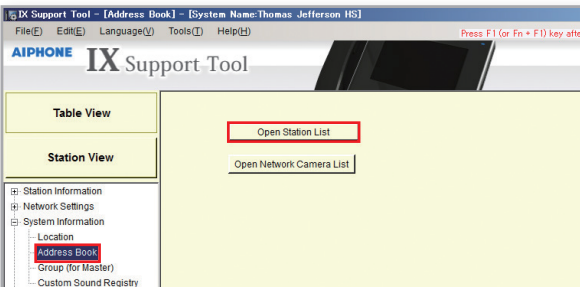
Use the **Select** drop-down menu to select each Master Station you wish to register the IP camera to.

### Update

Click **Update** to save the changes.

## Step 4: Assigning a Network Camera to a Station

To assign a IP camera to a station for station call-up, the camera will need to be registered to each station it will interact with.

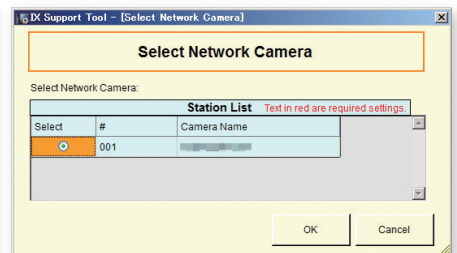
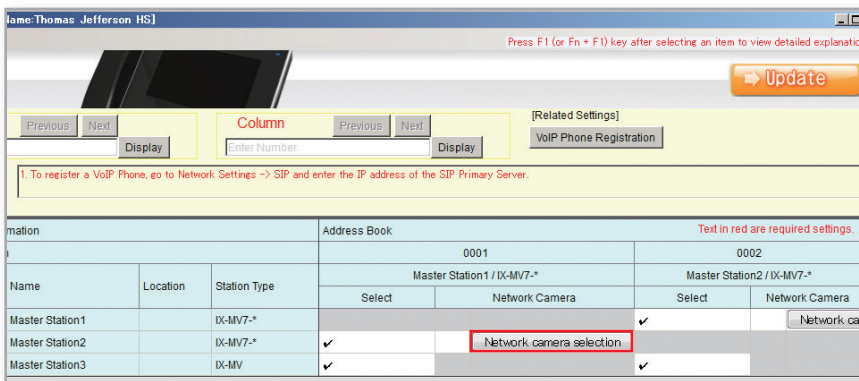


### Address Book

From the menu on the left expand **System Information** and select **Address book**.

### Open Station List

Click **Open Station List** to open the **Station List** screen.



### Network Camera Selection

Click **Network camera selection** to open a new window to select a registered IP camera.

### Update

Click **Update** to save the changes.

### Upload:

↑ The setting file needs to be uploaded to each station for these settings to take effect. Refer to page 12 for more details on this process.

# Timer Settings

## Getting Started

The call-in, communication, and door release timers are found across several sections within Support Tool. The following steps will show their location, and give a simple example of adjusting the respective setting.

## Door Release Output Timer

To adjust the amount of time the door release relay output activates, expand **Option Input / Relay Output Settings** and click **Relay Output**.

Scroll Right → →

**Table View**

**Station View**

- Station Information
- Network Settings
- System Information
- Call Settings
- Option Input / Relay Output Settings**
  - Option Input
  - Relay Output**
- Paging Settings

Station Information					Option Input / Relay Output Settings		
Identification					Relay Output		
#	Number	Name	Location	Station Type	Option Relay Control	Output Time Range	Output Time
0001	0001	Master Station1		IX-MV7-*	Disable	200-2000 [msec]	400
0002	0002	Master Station2		IX-MV7-*	Disable	200-2000 [msec]	400
0003	0003	Master Station3		IX-MV		200-2000 [msec]	400
0005	0005	Video Station1		IX-DV, IX-DVF(-*)	<b>Enable</b>	200-2000 [msec]	400
0006	0006	Video Station2		IX-DA		200-2000 [msec]	400
0007	0007	Audio Station1		IX-SS-2G	Disable	3-600 [sec]	400
0008	0008	Handset Sub Station1		IX-RS-*	Disable	200-2000 [msec]	400

### Option Relay Control

Use the drop-down menu to **Enable** Option Relay Control.

### Output Time Range and Output Time

Use the drop-down menu under **Output Time Range** to select either **200-2000(msec)** or **3-600(sec)**, then use the **Output Time** section to enter the desired value.

### Update

Click the **Update** button save the changes.

### Upload:

↑ The setting file needs to be uploaded to each station for these settings to take effect. Refer to page 12 for more details on this process.

## Call Timeout

To adjust the time a station will call-in to another station before ending, expand **Call Settings** and click **Call Origination**.

**Table View**

**Station View**

- Station Information
- Network Settings
- System Information
- Call Settings**
  - Station Information
  - Called Stations (Master Station)
  - Called Stations (Door/Sub Station)
  - Call Origination**
  - Incoming Call
- Option Input / Relay Output Settings

Station Information					Call Settings			
Identification					Call Origination			
#	Number	Name	Location	Station Type	Call Method	Ringback Tone	Call Timeout	
							Select	10-600 sec
0001	0001	Master Stations1		IX-MV7-*		Call Pattern 4	10-600 sec	60
0002	0002	Master Stations2		IX-MV7-*		Call Pattern 4	10-600 sec	60
0003	0003	Master Stations3		IX-MV7-*		Call Pattern 4	10-600 sec	60
0004	0004	Video Stations1		IX-DV, IX-DVF(-*)	Standard Destination	Call Pattern 1	10-600 sec	60
0005	0005	Video Stations2		IX-DV, IX-DVF(-*)	Standard Destination	Call Pattern 1	10-600 sec	60
0006	0006	Audio Stations1		IX-SSA(-*)	Standard Destination	Call Pattern 1	10-600 sec	60
0007	0007	Handset Sub Station1		IX-RS-*	Standard Destination	Call Pattern 1	10-600 sec	60

### Call Timeout

Under Call Timeout, select the desired duration between 10 and 600 seconds.

### Update

Click the **Update** button save the changes.

### Upload:

↑ The setting file needs to be uploaded to each station for these settings to take effect. Refer to page 12 for more details on this process.

# Timer Settings

## Talk Timeout

To adjust the amount of time a station will communicate to another station before ending the call, expand **Station Settings** and click **Communication**.

<b>Table View</b>
<b>Station View</b>
<ul style="list-style-type: none"> <li>[-] Station Information</li> <li>[-] Network Settings</li> <li>[-] System Information</li> <li>[-] Call Settings</li> <li>[-] Option Input / Relay Output Settings</li> <li>[-] Paging Settings</li> <li>[-] Function Settings</li> <li>[-] Transfer Settings</li> <li style="border: 1px solid red;">[-] <b>Station Settings</b> <ul style="list-style-type: none"> <li>Speed Dials / Favorites</li> <li>Privacy</li> <li>Volume / Tone</li> <li style="border: 1px solid red;">Communication</li> <li>Monitor</li> <li>Master Station Display</li> <li>Camera</li> <li>Door Release Assignment</li> <li>Line Supervision</li> </ul> </li> <li>[-] Maintenance</li> </ul>

Station Information					Station Settings		
#	Identification				Communication		
	Number	Name	Location	Station Type	Talk Timeout [sec]		Communication Start Tone
					Select	30-600 sec	
0001	0001	Master Stations1		IX-MV7-*	30-600 sec	60	
0002	0002	Master Stations2		IX-MV7-*	30-600 sec	60	
0003	0003	Master Stations3		IX-MV7-*	30-600 sec	60	
0004	0004	Video Stations1		IX-DV, IX-DVF(-*)	30-600 sec	60	None
0005	0005	Video Stations2		IX-DV, IX-DVF(-*)	Infinite	60	None
0006	0006	Audio Stations1		IX-SSA(-*)	30-600 sec	60	None
0007	0007	Handset Sub Station1		IX-RS-*	30-600 sec	60	None

### Talk Timeout

Use the drop-down menu under Talk Timeout to select either **Infinite** or **30-600 sec**, then use the 30-600 sec section to enter the desired value.

### Update

Click the **Update** button save the changes.

### Upload:



The setting file needs to be uploaded to each station for these settings to take effect. Refer to page 12 for more details on this process.

# MEMO

---

A series of horizontal dotted lines for writing a memo.

# MEMO

---

A series of horizontal dotted lines for writing, spanning the width of the page.



<https://www.aiphone.net/>

AIPHONE CO., LTD., NAGOYA, JAPAN

Issue Date: Dec.2022 FK2465 ④ 1222 MA 65218