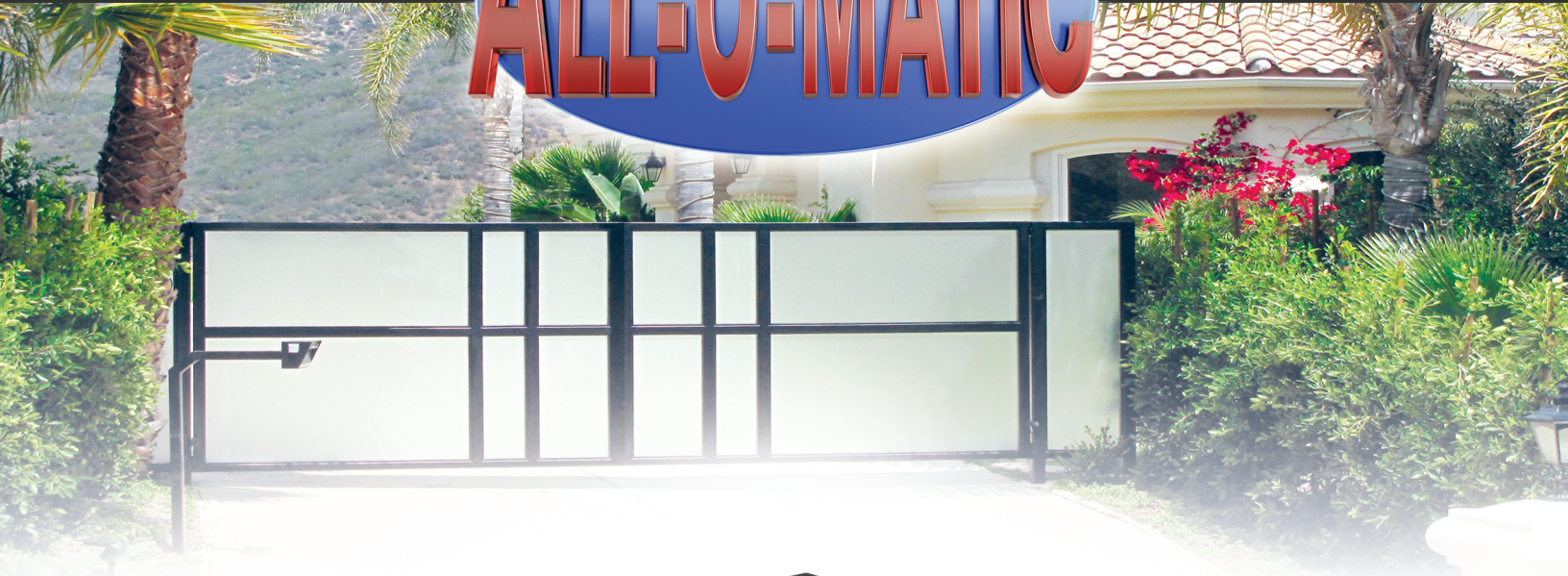


# ALL-O-MATIC®



UL325  
COMPLIANT

UL991  
COMPLIANT



INTEGRATED  
BATTERY BACKUP

MAINTENANCE FREE  
BRUSHLESS DC MOTOR

ADJUSTABLE TORQUE  
LIMITER

OPTIONAL PAD OR  
POST MOUNT

EASY SLIDE QUICK  
RELEASE ARM

## SW-325 DC

**SWING** GATE OPERATOR

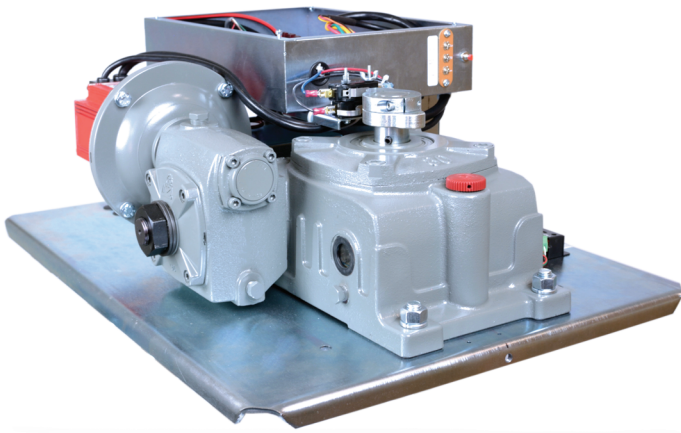


COMMERCIAL/INDUSTRIAL  
APPLICATIONS

SLIDERS | SWINGERS | OVERHEADS

By which all other automatic gate operators are measured

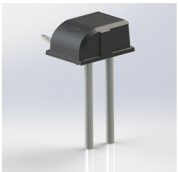
## SW-325 DC SWING GATE OPERATOR



## SPECS



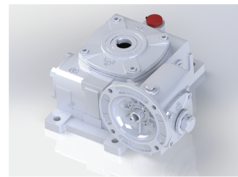
UL-325 2016 & UL-991 and CAN/CSA C22.2 # 247 Compliant (ETL listed)	
Warranty	Full 7 Year Residential, 5 Year Commercial
Classes	I, II, III & IV
Motor	24V Brushless DC (Equivalent to 1 HP AC Continuous Duty)
Power Source Options	120/220 VAC Single Phase and 12/24 VDC for Solar Panel
Gearbox	750:1 Ratio - Double compound with internal clutch, high precision gears and lubricated with synthetic oil
Cover	Rotationally molded plastic (polyethylene)
Opening Speed	90° opening 14-25 second (electronically adjustable)
Weight	Gates up to 2,000Lbs and up to 22ft
Dimensions	19" W X 25 1/2" L X 21" H
Soft/Start Stop	Soft start/stop (electronic and mechanical) for smooth operation during reversal in mid-travel
Mounting Options	Pad and Post mount options (specify when placing the order)
Built-in Looprack	Hassle free pre wired loop detector install
Batteries	Two 7Ahr Batteries 12VDC
Battery Backup	Integrated Battery Backup up to 250 Continuous cycles
Emergency Release	Easy slide arm release for manual operation with tab for pad lock



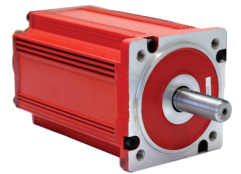
POST MOUNT



ADVANCED CONTROL BOARD WITH ARRAY OF FEATURES



GEAR BOX WITH INTERNAL CLUTCH



BRUSHLESS DC MOTOR CONTINUOUS DUTY

The Warrantor warrants the SW-325DC Gate Operator. ALL-O-MATIC INC warrants its gate openers for a period of five (5) years in commercial installations, and for a period of seven (7) years in residential installation to be free from defects in circuitry, motor, gear box and workmanship. This warranty applies from the date of purchase to the original owner. Warrantor will repair or, at its option, replace any device which it finds to require service. This device must be sent to the warrantor at the consumer's expense. The warrantor will return the repaired or replaced unit to the customer at the consumer's expense. Labor charges for dealer service or replacement are the responsibility of the owner. These warranties are in lieu of all other warranties either expressed or implied, and ALL-O-MATIC INC shall not be liable for consequential damage. All implied warranties of merchantability and or fitness for a particular purpose are hereby disclaimed and excluded. This limitation is not valid in jurisdictions which do not allow limitation of incidental or consequential damages or limitation of warranty periods. Caution in order to obtain this policy, please complete the registration card and send it by mail within 30 days of purchasing from ALL-O-MATIC INC. or your INSTALLER. If not registered only a one year warranty on all parts will be provided.



SLIDERS | SWINGERS | OVERHEADS  
By which all other **automatic gate operators** are measured