

TK-1000



All-O-Matic Tandem Kit

HEAVY DUTY TANDEM GATE KIT WILL OPERATE TWO 25' GATES WEIGHING UP TO 700 LBS EACH.

All-O-Matic Tandem Kit:

Tandem Kit Features:

3" COVERED FRONT IDLERS

BEAUTIFUL BLACK ZINC PLATING

CHAIN IDLERS CAST WITH BEARINGS

HEAVY DUTY 1/4" STEEL FRAME

HEAVY DUTY BEARINGS

UHMW 6" GUIDE ROLLERS

Package includes:

TWO AOM-IK-3

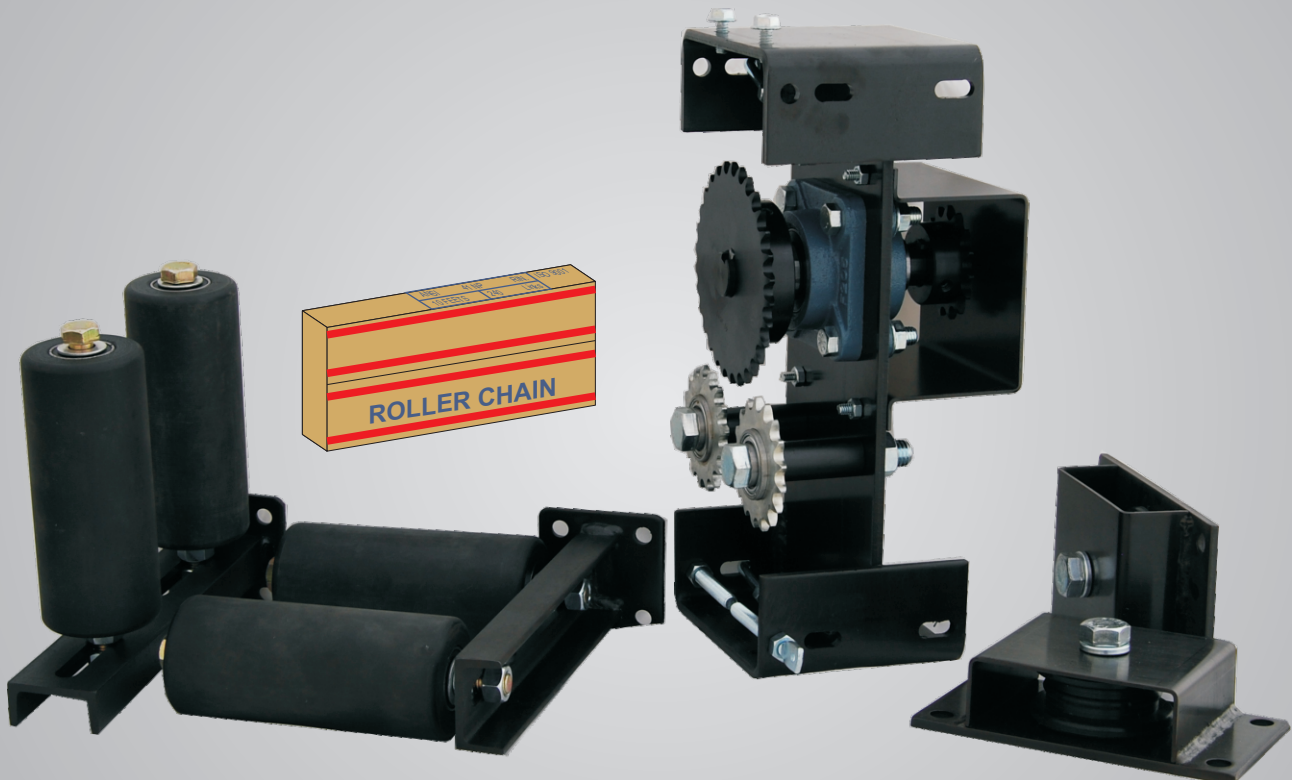
TWO GUIDE ROLLER SETS

20 FEET # 41 N.P. CHAIN

MAIN TANDEM GEAR FRAME WITH COVERS

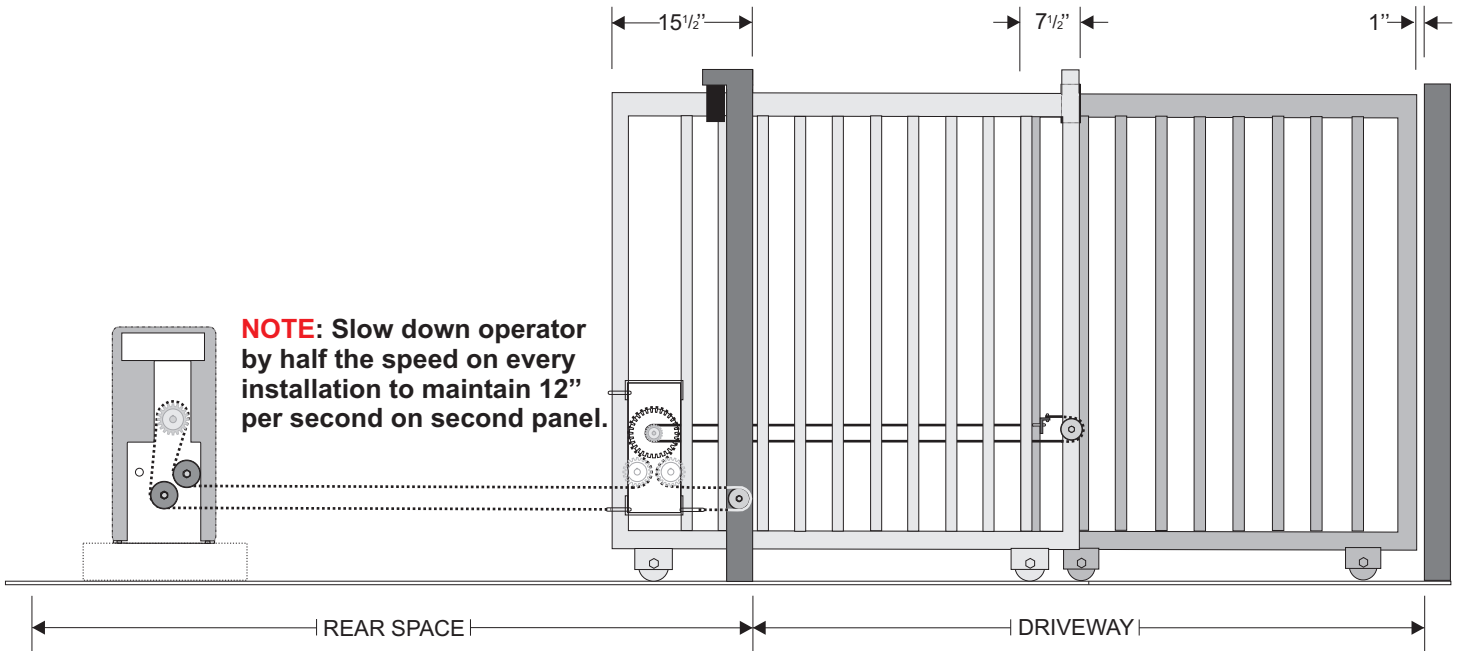
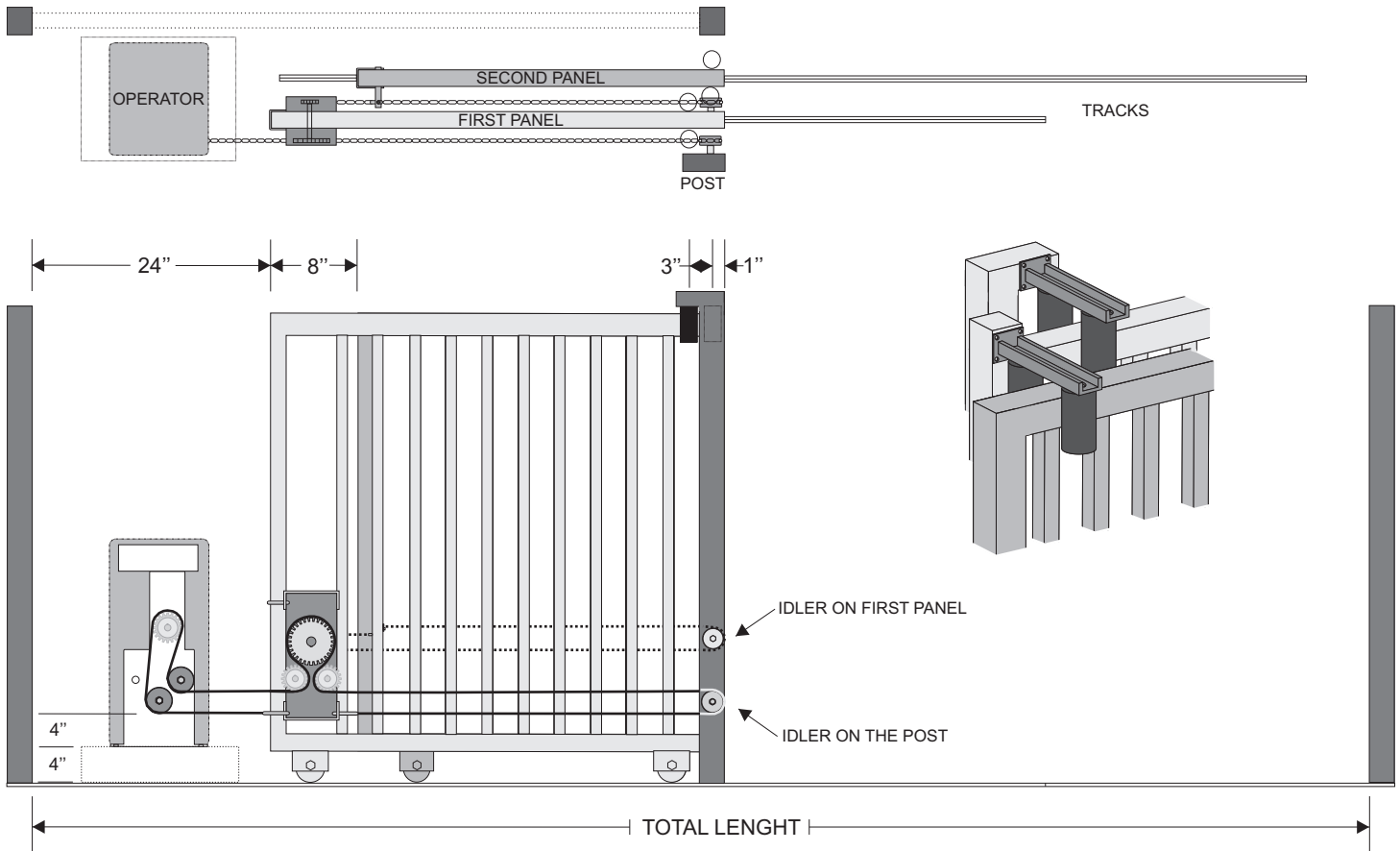
CHAIN BRACKET & THREE CHAIN BOLTS

FIRST RATE QUALITY



AOM TANDEM GATE HARDWARE

OVERHEAD VIEWS



WARNING

**GATE OPERATORS MUST BE SLOWED DOWN
PHOTO EYES MUST BE USED ON BOTH SIDES OF GATE
GATES MUST BE COVERED WITH SHEETING OR MATERIAL
SAFETY EDGES MUST BE USED**