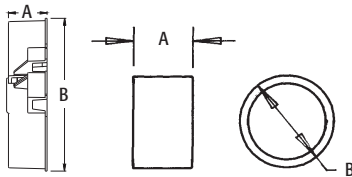


Insulating Bushings

EMT



EMT400S



EMT200S - EMT400S

Press fit. Holds firmly in place while pulling cables.

CATALOG NUMBER	UPC/DCI/NAED MFG #018997	TRADE SIZE	UNIT PKG	STD PKG	DIM A	DIM B
EMT50	12200	1/2	100	1000	.531	.840
EMT75	12205	3/4	100	1000	.531	1.056
EMT100	12220	1	100	100	.625	1.280
EMT125	12225	1-1/4	100	100	.625	1.660
EMT150	12230	1-1/2	100	100	.625	1.915
EMT200	12235	2	50	50	.625	2.377
EMT250*	12240	2-1/2	25	25	1.225	3.062
EMT300*	12245	3	25	25	1.225	3.690
EMT350*	12250	3-1/2	25	25	1.231	4.187
EMT400*	12255	4	25	25	1.233	4.815
Split Insulating Bushings†						
EMT200S	15301	2	50	50	.875	2.327
EMT250S*	12270	2-1/2	25	25	1.240	3.065
EMT300S*	12271	3	25	25	1.240	3.695
EMT350S*	12272	3-1/2	25	25	1.240	4.311
EMT400S*	22001	4	25	25	1.240	4.812

Refer to page I-1 for Rigid Insulating Bushings size 1/2" through 4".

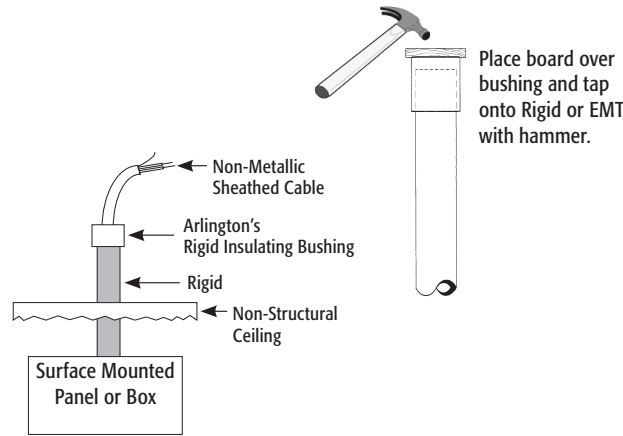
*Can also be used for rigid, IMC, and PVC rigid conduit.

Note: Meets 2014 NEC code requirements for 300.15(c) protection. Listed for use in environmental air handling spaces per 2014 NEC code requirements 300.22(c).

†PATENTED.



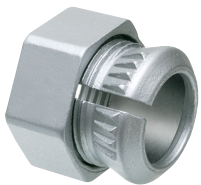
Scan For More Information



The new EMT400S insulating bushing is split for easy installation when cables are already in place. They press fit onto conduit and secure with a cable tie. When used for cable protection only, these insulating bushings are a perfect substitution for costly fittings.

EMT 2-Piece Connector

Zinc die-cast.



CATALOG NUMBER	UPC/DCI/NAED MFG #018997	TRADE SIZE	KO SIZE	UNIT PKG	STD PKG	DIM A	DIM B
L20	32000	1/2	1/2	50	250	.770	1.107

