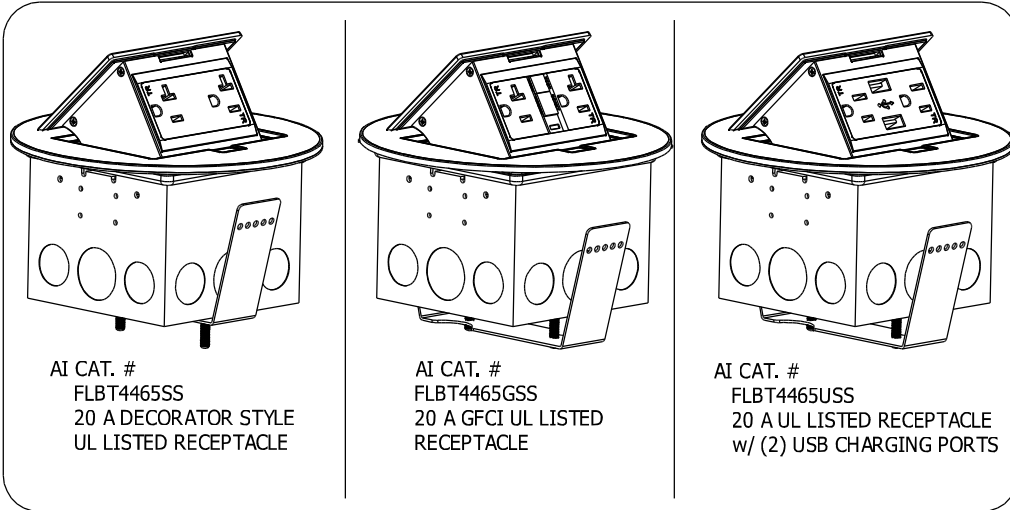




Arlington Industries, Inc.

1 Stauffer Ind. Park - Scranton, Pa. 18517  
800-233-4717 570-562-0646  
www.aifittings.com - E-MAIL: sales@aifittings.com  
Manufacturers of Quality Electrical Products

## FLBT4465 SERIES : Pop-Up Countertop Receptacle Kit



**WARNING:** Make sure power is OFF at main panel box before installing.

### INSTALLATION INSTRUCTIONS

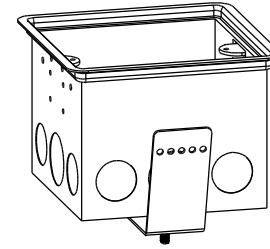
1. Cut hole 4-7/16" x 4-7/16" thru countertop in desired location
2. Secure electrical box to counter by tightening 2 #10 screws inside the box, drawing the fastening clip tight to the underside of counter
3. Pull cable and install in box using appropriate fitting (not supplied)
4. Wire receptacle in accordance with National (NEC/CEC), state/province, and local codes
5. Install Pop-up coverplate to steel box using (2) #6-32 screws provided

If you have any questions or if parts are missing Please call our Customer Service Department at 1-800-233-4717. Do not call or return this product to your local store or distributor.

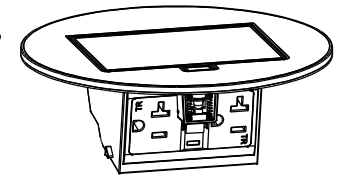
### Contents:



#6-32 x 1-3/16"  
LG. SCREWS



4x4 STEEL BOX  
w/ FASTENING CLIP



POP-UP COVERPLATE  
w/ 20 A UL LISTED  
GFCI RECEPTACLE

