

AXIS 231D/AXIS 232D Network Dome Cameras

For professional video surveillance applications

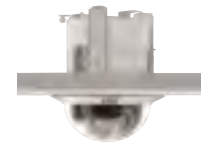
For demanding security surveillance and remote monitoring applications, the AXIS 231D/232D Network Dome Cameras deliver superior quality Motion JPEG and MPEG-4 video in all light conditions over IP networks. As with all true domes, the AXIS Network Dome Cameras enable a continuous 360-degree pan operation and support 20 preset positions and guard tour. They also provide a complete set of network security features such as HTTPS and IP address filtering and an 18x optical zoom, autofocus lens, with a fast and accurate pan/tilt function.

The AXIS 231D/232D can capture color video in light conditions down to 0.3 lux, and AXIS 232D, with its automatic or manually removable IR-cut filter, is able to capture black and white video in dark conditions as low as 0.005 lux.

The AXIS 231D/AXIS232D is perfect for professional security installations at airports, railway stations and prisons, as well as at warehouses, manufacturing facilities, shopping centers and school campuses.



- Full frame rate: up to 30/25 frames per second for all resolutions
- Support simultaneous streams of Motion JPEG and MPEG-4
- Built-in 18x optical + 12x digital zoom lens with auto focus
- Day/night functionality with images down to 0.005 lux (AXIS 232D)
- Preset positions and Guard tour
- HTTPS for encrypted communication



Specifications

Models	AXIS 231D 50 Hz/PAL AXIS 231D 60 Hz/NTSC AXIS 232D 50 Hz/PAL (Automatic day/night functionality) AXIS 232D 60 Hz/NTSC (Automatic day/night functionality)	Operating conditions	5 - 50 °C (41 - 122 °F) Humidity 20 - 80% RH (non-condensing)
Image Sensor	1/4" Sony EXview HAD CCD	Installation, management and maintenance	Installation tool on CD and web-based configuration Support for configuration backup and restore Support for firmware upgrades over HTTP or FTP, firmware available at www.axis.com
Lens	Autofocus with 18x optical zoom f=4.1mm wide to 73.8mm tele. F1.4-3.0 Focus range: 35mm (wide) or 800mm (tele) to infinity	Video access from Web browser	Camera live view, sequence tour capability for up to 20 Axis cameras, customizable HTML pages, complete remote control of pan, tilt and zoom
Angle of view	48° (wide end) to 2.8° (tele end)	Minimum Web browsing requirements	Pentium III CPU 500 MHz or higher, or equivalent AMD 128 MB RAM AGP graphic card, Direct Draw, 32 MB RAM Windows XP, 2000, NT4.0*, ME* or 98*, DirectX 9.0 or later Internet Explorer 5.x or later For other operating systems and browsers see www.axis.com/techsup <i>*Motion JPEG only</i>
Zoom	18x optical and 12x digital, total 216x	System integration support	Powerful API for software integration available at www.axis.com , event trigger data in video stream, AXIS Media Control SDK, embedded scripting support, embedded operating system: Linux 2.4
Minimum illumination	Color: 0.3 lux at 30IRE B/w: 0.005 lux at 30IRE (Only AXIS 232D)	Supported protocols	HTTP, HTTPS, SSL/TLS*, TCP, SNMPv1/v2cv/v3 (MIB-II), RTSP, RTP, UDP, IGMP, RTCP, SMTP, FTP, DHCP, UPnP, ARP, DNS, DynDNS, SOCKS. More information on protocol usage available at www.axis.com <i>*This product includes software developed by the Open SSL Project for use in the Open SSL Tool kit (www.openssl.org)</i>
Shutter time	1 sec to 1/10.000sec	Applications (not incl.)	AXIS Camera Station - Surveillance application for viewing, recording and archiving up to 25 cameras AXIS Camera Recorder - Surveillance application for viewing and recording up to 16 cameras AXIS Camera Explorer - Basic software for viewing and manual recording See www.axis.com/partner/adp_partners.htm for more software applications via partners
Pan Range	360° endless	Included Accessories	Power supply 24V AC Hard ceiling mounting bracket Drop ceiling mounting bracket CD with installation tool, software, User manual, MPEG-4 licenses (1 encoder, 1 decoder) MPEG-4 decoder (Windows) Quick installation guide Connection module for power and alarm in/out
Tilt Range	0° - 90°	Accessories (not incl.)	Videotek DBH24K Dome Housing IP65 rated ¹⁾ Various mounting brackets for outdoor housing Smoked and transparent bubble Outdoor IP66 rated power supply AXIS PS24 ²⁾ IR Illumination (Only AXIS 232D)
Max speed	Pan 360°/s Tilt 360°/s	Approvals	EMC: CE: EN 55022:1994+A1+A2 Class A; EN 61000-3-2:2000; EN 61000-3-3:1995+A1; EN 55024:1998+A1; EN 61000-6-1:2001; EN 61000-6-2:2001; FCC: Part 15 Subpart B Class A; VCCI: Class A; C-tick AS/NZS 3548. ICES-003 Safety: UL and CSA (power supply), EN 60950 (power supply)
Video compression	Motion JPEG MPEG-4 Part 2 (ISO/IEC 14496-2), Profiles: ASP and SP	Weight	1.93 kg (4.3 lbs) excl. power supply
Resolution	Resolutions 4CIF, 2CIFExp, 2CIF, CIF, QCIF Max 704x480 (NTSC) 768x575 (PAL) Min 160x120 (NTSC) 176x144 (PAL)		
Frame rate (NTSC/PAL)	Motion JPEG: Up to 30/25fps at 4CIF MPEG-4: Up to 30/25 fps at 2CIF		
Video streaming	Simultaneous Motion JPEG and MPEG-4 Controllable frame rate and bandwidth Constant and variable bit rate (MPEG-4)		
Image settings	Compression levels: 11 (Motion JPEG)/23 (MPEG-4) Configurable brightness, sharpness, white balance, exposure control, backlight compensation Overlay capabilities: time, date, text, custom logo or image De-interlacing (4CIF resolution)		
PTZ Control	20 preset positions Guard tour Control queue		
Security	Multiple user access levels with password protection IP address filtering, HTTPS encryption		
Alarm and event management	Events triggered by built-in motion detection, external inputs or according to a schedule Image upload over FTP, email and HTTP Notification over TCP, email, HTTP and external outputs Pre- and post-alarm buffer of 9 MB per channel (approx. 4 min. of CIF resolution video at 4 frames per second)		
Connectors	Ethernet 10BaseT/100BaseTX, RJ-45 D-sub for RS-232 port 4 alarm inputs, 4 outputs		
Processors and memory	CPU: ETRAX 100LX 32bit Video processing and compression: ARTPEC-2 Memory: 32 MB RAM, 8 MB Flash Battery backed up real-time clock		
Power	24V AC or DC, max 25W		



¹⁾Videotek DBH24K Dome Housing IP65 rated

Optional accessories



²⁾Outdoor IP66 rated power supply AXIS PS24

www.axis.com



Make your network smarter