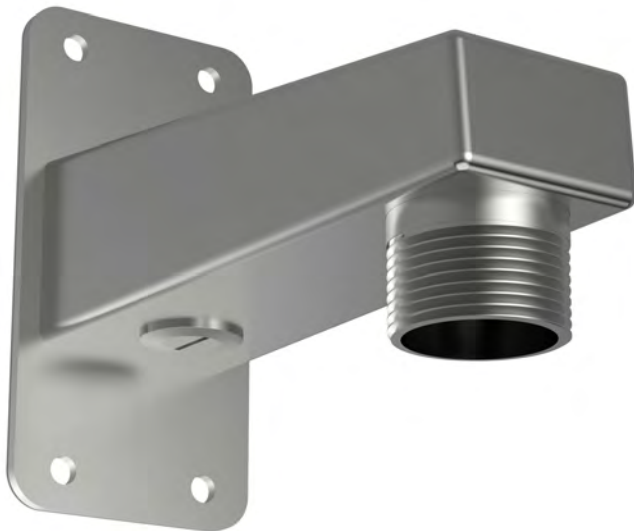


AXIS T91F61 Wall Mount

Made in marine-grade stainless steel

AXIS T91F61 Wall Mount is specially designed using marine-grade, electropolished and coated stainless steel (SS 316L) material. Thanks to its impact-resistant and proven, outdoor-ready material, the wall mount suits all environments, both indoors and outdoors. The mount offers high corrosion resistance against salt water and chemicals and it is ideal for stainless steel fixed dome cameras.

- > [Marine-grade stainless steel \(SS 316L\)](#)
- > [High corrosion resistance against salt water and chemicals](#)
- > [Indoor and outdoor wall mounting](#)
- > [Suitable for stainless steel fixed domes cameras](#)



AXIS T91F61 Wall Mount

General	
Supported products	Indoor: AXIS T94U01D Pendant Kit (AXIS Q3505-SVE Mk II) Outdoor: AXIS T94U02D Pendant Kit (AXIS Q3505-SVE Mk II)
Casing	Coated electropolished stainless steel (V4A, SAE 316L/UNS S31603/EN 1.4404)
Dimensions	85 x 212 x 165 mm (3.4 x 8.4 x 6.5 in)
Weight	1.2 kg (2.6 lb)
Maximum load	10 kg (22 lb)
Cable routing	Back: Cable hole Bottom: 3/4" conduit hole
Environment	Indoor Outdoor
Approvals	IEC/EN/UL 60950-1 IEC/EN/UL 60950-22
	EN 50581 NEMA 250 Type 4X IEC 62262 IK10+ IEC 60068-2-6 (Sinus) IEC 60068-2-27 (Shock) MIL-STD 810G 509.5 EN-ISO 12944 C4H (coating)
Included accessories	Installation Guide Wall gasket
Optional accessories	AXIS T91F67 Pole Mount For more accessories, see www.axis.com
Warranty	Axis 3-year warranty, see www.axis.com/warranty
Environmental responsibility: www.axis.com/environmental-responsibility	