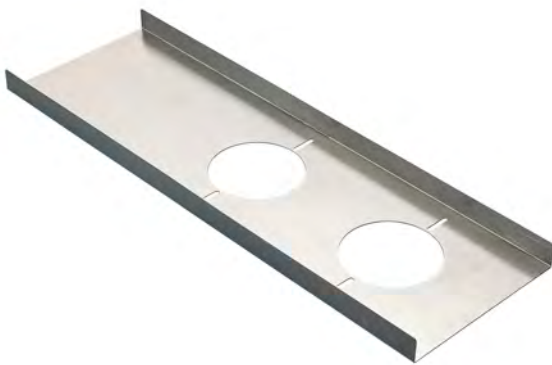


MNT-ICP-FDC Suspension Ceiling Support Kit for FLEXIDOME in-ceiling cameras

www.boschsecurity.com



BOSCH
Invented for life



- ▶ Load-bearing bridge design eliminates tile sag
- ▶ Fast and simple installation
- ▶ For use with FLEXIDOME 2000, 4000, 5000 and 7000 (except RD models) series fixed dome cameras
- ▶ Includes camera mounting hardware

The MNT-ICP-FDC suspension ceiling support kit incorporates a load-bearing bridge design which eliminates tile sag by evenly distributing the camera's weight to the ceiling support system. The bridge design is also faster and simpler to install than traditional "T-bar" camera supports. The kit includes all of the hardware necessary to mount the supported cameras.

This suspension ceiling support kit fits the following series of FLEXIDOME IP in-ceiling cameras (including panoramic cameras):

- 2000
- 4000
- 5000
- 7000 (except RD models)

Installation/configuration notes



Example installation: FLEXIDOME camera clamped to MNT-ICP-FDC, with MNT-RIS-FDC, on top of ceiling tile

Parts included

1	MNT-ICP-FDC
2	MNT-RIS-FDC
2	Screws, 127 mm (5 in.)

