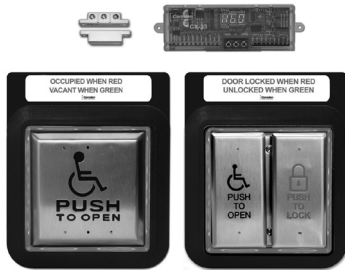




CX-WC SERIES

BARRIER FREE RESTROOM CONTROL



CX-WC13AXFM

FEATURES

- A RANGE OF COMPLETE EQUIPMENT PACKAGES THAT ARE SPECIFICALLY DESIGNED TO MEET THE LATEST REQUIREMENTS OF ONTARIO REG. 368/13 AMENDMENT TO 2012 OBC FOR BARRIER FREE RESTROOMS
- EXCLUSIVE PRODUCTS SPECIFICALLY DESIGNED FOR BARRIER FREE RESTROOM APPLICATIONS
- THE WIDEST RANGE OF DESIGN OPTIONS FOR ONE OR TWO DOOR RESTROOMS
- EVERYTHING YOU NEED, INCLUDING CONTROLLER, ACTIVATION SWITCHES, ANNUNCIATION, AND DOOR CONTACT
- 3 YEAR WARRANTY

DESCRIPTION

Camden Door Controls offers an industry-leading range of packages designed specifically for the control of automatic doors in restroom applications. These kits feature a number of innovative and exclusive products that are not available elsewhere, including the CM-AF500 single gang annunciator (providing 'OCCUPIED WHEN LIT' white-out signage, not visible when unit is not lit) CX-33 advanced logic relay (providing exclusive operation modes for restroom control) and Aura™ illuminated push plate switches (that combine 'OCCUPIED WHEN LIT' annunciation and door activation in one product). Camden also offers barrier free restroom control utilizing touchless switches.

APPLICATION

Camden Door Controls CX-WC Series barrier free restroom control systems provide a complete equipment package for compliance with building code requirements. They are designed for universal restrooms with one or two doors. The kit include a relay controller, 'PUSH TO LOCK' and 'PUSH TO OPEN' activation switches, and the option for audible and visual 'OCCUPIED' annunciation. Additional components to make a complete system, including additional 'PUSH TO OPEN' push plate switches and electric strike, are offered separately.

ELECTRIC STRIKES

CABINET LOCKS

MAGNETIC LOCKS

DOOR ALARMS

RELAYS & TIMERS

POWER SUPPLIES

TRANSFORMERS

ANNUNCIATORS

RESTROOM CONTROL KITS

BARRIER FREE RESTROOM CONTROL

COMPONENTS

See individual product spec sheets for a complete list of product information for each model shown.

CX-33: ADVANCED LOGIC RELAY CONTROLLER

- COMPACT DESIGN FITS IN AUTOMATIC DOOR OPERATOR CABINET
- RESTROOM CONTROL OPERATING MODES PROVIDE LOGIC FOR CONTROL OF BARRIER FREE AND EMERGENCY CALL SYSTEMS
- 5 INPUTS, INCLUDING A 'WET' INPUT
- CAN BE USED WITH NORMALLY LOCKED OR UNLOCKED WASHROOM
- LARGE 3 SEGMENT DISPLAY IS EASIER TO VIEW AND UNDERSTAND, THAN COMPETITIVE MODELS



CX-33

CX-EMF2: MULTI-FUNCTION RELAY CONTROLLER

- ACCEPTS UP TO 7 DRY INPUTS
- 5 FORM C, 3 AMP RELAY OUTPUTS
- SUPPORTS TWO DOOR RESTROOM APPLICATIONS
- SUPPORTS FLASHING EMERGENCY CALL SYSTEM ANNUNCIATION AND PROGRAMMABLE DOOR LOCK TIME



CX-EMF2

CM-400/8: 'PUSH TO LOCK' MUSHROOM PUSHBUTTON

- SINGLE GANG, MOMENTARY N/O, 1-5/8" RED BUTTON
- UL /CSA APPROVED SWITCH
- RATED 6 AMPS @ 30V DC



CM-400/8

CM-40/8: ALL ACTIVE™ 4-1/2" ROUND 'PUSH TO LOCK' PUSH PLATE SWITCH

- 4 1/2" ROUND HEAVY GAUGE STAINLESS STEEL FACEPLATE
- UL/CSA APPROVED SWITCH
- RATED 15 AMPS @30V DC



CM-40/8

CM-45/8: ALL ACTIVE™ 4-1/2" SQUARE 'PUSH TO LOCK' PUSH PLATE SWITCH

- 4 1/2" SQUARE HEAVY GAUGE STAINLESS STEEL FACEPLATE
- UL/CSA APPROVED SWITCH
- RATED 15 AMPS @30V DC



CM-45/8

CM-AF500: SINGLE GANG LED INDICATOR

- 'SUPER BRIGHT' LEDS FOR HIGH VISIBILITY, EVEN IN DAYLIGHT
- TEXT/GRAPHICS ARE NOT LEGIBLE WHEN NOT ILLUMINATED
- VANDAL AND WEATHER RESISTANT CONSTRUCTION
- LABELS INCLUDE: 'OCCUPIED WHEN LIT', 'LOCKED WHEN LIT' (GREEN), 'OCCUPIED/OCCUPE' (RED AND GREEN), 'ARMED' (RED), 'UNLOCKED' (GREEN)



CM-AF500

CM-AF550R: DOUBLE GANG MUSHROOM 'PUSH TO LOCK' BUTTON AND LED ANNUNCIATOR

- SINGLE GANG, MOMENTARY N/O, 1-5/8" RED BUTTON
- RATED 6 AMPS @ 30V DC
- 'SUPER BRIGHT' LEDS FOR HIGH VISIBILITY, EVEN IN DAYLIGHT



CM-AF550R

BARRIER FREE RESTROOM CONTROL

CM-2520/4855SE1: FLUSH 'PUSH TO OPEN' & 'PUSH TO LOCK' COMBO PUSH PLATE SWITCH WITH BLUE/GREEN/RED ILLUMINATION AND SIGN

- FIELD SELECTABLE ILLUMINATION (IDLE AND ACTIVE)
- SURFACE MOUNT VERSION AVAILABLE: CM-2520/4854SE1
- AUDIBLE (SOUNDER) CONFIRMATION OF SWITCH ACTIVATION (SELECTABLE 'ON'/'OFF')



CM-2520/4855SE1

CM-45/855SE1: FLUSH 'PUSH TO LOCK' PUSH PLATE WITH GREEN/RED ILLUMINATION AND SIGN

- FIELD SELECTABLE ILLUMINATION (IDLE AND ACTIVE)
- SURFACE MOUNT VERSION AVAILABLE: CM-45/854SE1
- AUDIBLE (SOUNDER) CONFIRMATION OF SWITCH ACTIVATION (SELECTABLE 'ON' / 'OFF')



CM-45/855SE1

CM-45/455SE1: FLUSH 'WHEELCHAIR & PUSH TO OPEN' PUSH PLATE WITH GREEN/RED ILLUMINATION SIGN

- FIELD SELECTABLE ILLUMINATION (IDLE AND ACTIVE)
- AUDIBLE (SOUNDER) CONFIRMATION OF SWITCH ACTIVATION (SELECTABLE 'ON' / 'OFF')
- SURFACE MOUNT VERSION AVAILABLE: CM-45/454SE1



CM-45/455SE1

CM-331/43S-SGLR: 'WAVE TO LOCK' TOUCHLESS SWITCH WITH GREEN/RED ILLUMINATION AND SIGN

- ADJUSTABLE STANDARD OPERATING RANGE 1" - 28"
- HEAVY DUTY 3 AMP RELAYS, FOR USE WITH ALL AUTOMATIC OPERATORS AND ELECTRIFIED LOCKS
- 'SUPER BRIGHT' LED LIGHT RING WITH FIELD SELECTABLE ILLUMINATION (IDLE AND ACTIVE)



CM-331/43S-SGLR

CM-331/42WS-SGLR: 'WAVE TO OPEN' TOUCHLESS SWITCH WITH GREEN/RED ILLUMINATION AND SIGN

- ADJUSTABLE STANDARD OPERATING RANGE 1" - 28"
- HEAVY DUTY 3 AMP RELAYS, FOR USE WITH ALL AUTOMATIC OPERATORS AND ELECTRIFIED LOCKS
- 'SUPER BRIGHT' LED LIGHT RING WITH FIELD SELECTABLE ILLUMINATION (IDLE AND ACTIVE)



CM-331/42WS-SGLR

CX-MDA: MAGNETIC DOOR CONTRACT

- SURFACE, SPST CONTACT
- 15/16" (23MM) GAP
- SPDT SURFACE (CX-MDC) AND RECESSED SPST (CX-MDH) CONTRACTS AVAILABLE



CM-MDA

CX-ED2079: 'UNIVERSAL' GRADE 2 ELECTRIC STRIKE

- COMPATIBLE WITH CYLINDRICAL LOCKSETS WITH 1/2" - 5/8" LATCH PROJECTION
- 'UNIVERSAL' 12/24V, AC/DC, OPERATION, FAIL SAFE/FAIL SECURE
- 3 STAINLESS STEEL FACEPLATES INCLUDED



CM-ED2079

BARRIER FREE RESTROOM CONTROL

SPECIFICATIONS

VOLTAGE:	12/24VDC
CURRENT DRAW:	CX-WC10: 320MA
	CX-WC11: 360MA
	CX-WC12: 360MA
	CX-WC13: 540MA
	CX-WC14: 830MA
	CX-WC15: 720MA
	CX-WC16: 460MA

ORDERING INFORMATION

EQUIPMENT PACKAGE

CX-WC10: BASIC PUSH BUTTON SYSTEM

- CX-33 ADVANCED LOGIC CONTROL,
 - CM-400R/8 MUSHROOM (PUSH TO LOCK) BUTTON,
 - CX-MDA MAGNETIC DOOR CONTACT
- ADD SUFFIX 'F' TO MODEL NUMBER FOR FRENCH LANGUAGE

CX-WC11: PUSH BUTTON AND ANNUNCIATOR SYSTEM

- CX-33 ADVANCED LOGIC CONTROL,
 - CM-400R/8 MUSHROOM (PUSH TO LOCK) BUTTON,
 - CM-AF500 SINGLE GANG LED ANNUNCIATOR,
 - CX-MDA MAGNETIC DOOR CONTACT
- ADD SUFFIX 'F' TO MODEL NUMBER FOR FRENCH LANGUAGE

CX-WC12: 4 1/2" PUSH PLATE AND ANNUNCIATOR SYSTEM

- CX-33 ADVANCED LOGIC CONTROL,
 - CM-40/8 ALL ACTIVE™ PUSH PLATE SWITCH (PUSH TO LOCK),
 - CM-AF500 SINGLE GANG LED ANNUNCIATOR,
 - CX-MDA MAGNETIC DOOR CONTACT
- ADD SUFFIX 'F' TO MODEL NUMBER FOR FRENCH LANGUAGE

CX-WC13AXFM: FLUSH MOUNT COMBO ILLUMINATED PUSH PLATE SWITCH SYSTEM

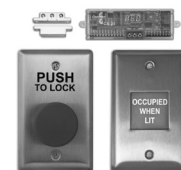
- CX-33 ADVANCED LOGIC CONTROL,
 - CM-2520/4855SE1 FLUSH COMBO ILLUMINATED PUSH PLATE SWITCH ('PUSH TO OPEN' & 'PUSH TO LOCK') WITH SIGN
 - CM-45/455SE1 4 1/2" ILLUMINATED PUSH PLATE (WHEELCHAIR SYMBOL & PUSH TO OPEN) WITH SIGN
 - CX-MDA MAGNETIC DOOR CONTACT
- ADD SUFFIX 'F' TO MODEL NUMBER FOR FRENCH LANGUAGE

CX-WC13AXSM: SURFACE MOUNT COMBO ILLUMINATED PUSH PLATE SWITCH SYSTEM

- CX-33 ADVANCED LOGIC CONTROL
 - CM-2520/4854SE1 SURFACE COMBO ILLUMINATED PUSH PLATE SWITCH ('PUSH TO OPEN' & 'PUSH TO LOCK') WITH SIGN
 - CM-45/454SE1 4 1/2" ILLUMINATED PUSH PLATE (WHEELCHAIR SYMBOL & PUSH TO OPEN) WITH SIGN
 - CX-MDA MAGNETIC DOOR CONTACT
- ADD SUFFIX 'F' TO MODEL NUMBER FOR FRENCH LANGUAGE



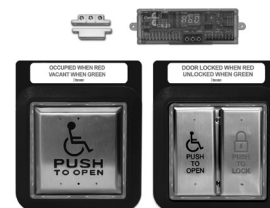
CX-WC10



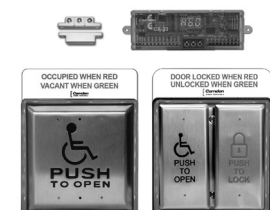
CX-WC11



CX-WC12



CX-WC13AXFM



CX-WC13AXSM

ORDERING INFORMATION

CX-WC13XFM: FLUSH MOUNT AURA™ ILLUMINATED PUSH PLATE SWITCH SYSTEM

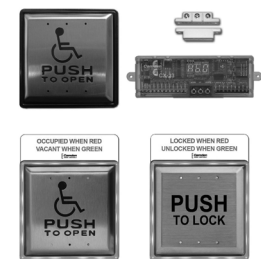
- CX-33 ADVANCED LOGIC CONTROL,
 - CM-45/855SE1 4 ½" ILLUMINATED PUSH PLATE SWITCH (PUSH TO LOCK) WITH SIGN
 - CM-45/455SE1 4 ½" ILLUMINATED PUSH PLATE (WHEELCHAIR SYMBOL & PUSH TO OPEN) WITH SIGN
 - CM-45/4 'PUSH TO OPEN' 4 ½" SQUARE PUSH PLATE SWITCH
 - CM-55CBL FLUSH SQUARE MOUNTING BOX FOR CM-45/4
 - CX-MDA MAGNETIC DOOR CONTACT
- ADD SUFFIX 'F' TO MODEL NUMBER FOR FRENCH LANGUAGE



CX-WC13XFM

CX-WC13XSM: SURFACE MOUNT AURA™ ILLUMINATED PUSH PLATE SWITCH SYSTEM

- CX-33 ADVANCED LOGIC CONTROL
 - CM-45/854SE1 4 ½" ILLUMINATED PUSH PLATE SWITCH (PUSH TO LOCK), WITH SIGN
 - CM-45/454SE1 4 ½" ILLUMINATED PUSH PLATE (WHEELCHAIR SYMBOL & PUSH TO OPEN) WITH SIGN
 - CM-45/4 4 ½" SQUARE 'PUSH TO OPEN' PUSH PLATE SWITCH
 - CM-54CBL SURFACE SQUARE BOX FOR CM-45/4
 - CX-MDA MAGNETIC DOOR CONTACT
- ADD SUFFIX 'F' TO MODEL NUMBER FOR FRENCH LANGUAGE



CX-WC13XSM

CX-WC14XFM: FLUSH MOUNT TWO DOOR RESTROOM SYSTEM

- CX-EMF-2 MULTI-FUNCTION RELAY
 - CM-45/855SE1 FLUSH 4 ½" ILLUMINATED 'PUSH TO LOCK' PUSH PLATE SWITCH WITH SIGN
 - (2) CM-45/455SE1 FLUSH 4 ½" ILLUMINATED WHEELCHAIR & 'PUSH TO OPEN' PUSH PLATE SWITCH WITH SIGN
 - (2) CM-45/4 WHEELCHAIR & 'PUSH TO OPEN' 4 ½" SQUARE PUSH PLATE SWITCH
 - (2) CM-55CBL FLUSH SQUARE MOUNTING BOX FOR CM-45/4
 - (2) CX-MDA MAGNETIC DOOR CONTACTS.
 - CX-EMF-2 ALSO PROVIDES OPTION FOR TIMED UNLOCK AND STROBE ANNUNCIATOR ILLUMINATION.
- ADD SUFFIX 'F' TO MODEL NUMBER FOR FRENCH LANGUAGE



CX-WC14XFM

CX-WC14XSM: SURFACE MOUNT TWO DOOR RESTROOM SYSTEM

- CX-EMF-2 MULTI-FUNCTION RELAY
 - (2) CM-45/854SE1 4 ½" SURFACE ILLUMINATED 'PUSH TO LOCK' PUSH PLATE SWITCH WITH SIGN
 - (2) CM-45/454SE1 4 ½" SURFACE ILLUMINATED WHEELCHAIR & 'PUSH TO OPEN' PUSH PLATE SWITCHES WITH SIGN
 - (2) CM-45/4 WHEELCHAIR & 'PUSH TO OPEN' PUSH PLATE SWITCHES
 - (2) CM-54CBL SURFACE SQUARE MOUNTING BOX FOR CM-45
 - (2) CX-MDA MAGNETIC DOOR CONTACTS
- ADD SUFFIX 'F' TO MODEL NUMBER FOR FRENCH LANGUAGE.



CX-WC14XSM

CX-WC15XFM: FLUSH MOUNT AURA™ ILLUMINATED PUSH PLATE SWITCH & ASSISTANCE SWITCH SYSTEM

- CX-EMF-2 MULTI-FUNCTION RELAY
 - CM-45/855E1 FLUSH 4 ½" 'PUSH TO LOCK' ILLUMINATED PUSH PLATE SWITCH WITH SIGN
 - CM-45/455E1 FLUSH 4 ½" ILLUMINATED WHEELCHAIR & 'PUSH TO OPEN' PUSH PLATE WITH SIGN
 - CM-45/4 'PUSH TO OPEN' 4 ½" SQUARE PUSH PLATE SWITCH
 - CM-55CBL FLUSH SQUARE MOUNTING BOX FOR CM-45/4
 - CM-450R/12 'PRESS FOR EMERGENCY ASSISTANCE' MUSHROOM PUSH BUTTON
 - CX-MDA MAGNETIC DOOR CONTACT
- SAME OPERATION AS CX-WC13 KIT WITH THE ADDITIONAL OPTION OR FLASHING 'ASSISTANCE REQUESTED' ANNUNCIATION AND TIMED WASHROOM UNLOCK
ADD SUFFIX 'F' TO MODEL NUMBER FOR FRENCH LANGUAGE



CX-WC15XFM

CX-WC15XSM: AS ABOVE, SURFACE MOUNT AURA™ ILLUMINATED PUSH PLATE SWITCH & ASSISTANCE SWITCH SYSTEM

- CX-EMF-2 MULTI-FUNCTION RELAY
 - CM-45/854SE1 SURFACE 4 ½" ILLUMINATED 'PUSH TO LOCK' PUSH PLATE SWITCH WITH SIGN
 - CM-45/454SE1 SURFACE 4 ½" ILLUMINATED WHEELCHAIR & 'PUSH TO OPEN' PUSH PLATE SWITCH WITH SIGN
 - CM-45/4 4 ½" SQUARE 'PUSH TO OPEN' PUSH PLATE SWITCH
 - CM-54CBL SURFACE SQUARE BOX FOR CM-45/4
 - CM-450R/12 'PRESS FOR EMERGENCY ASSISTANCE' MUSHROOM PUSH BUTTON
 - CX-MDA MAGNETIC DOOR CONTACT
- ADD SUFFIX 'F' TO MODEL NUMBER FOR FRENCH LANGUAGE.



CX-WC15XSM

CX-WC16: TOUCHLESS SWITCH RESTROOM SYSTEM

- CX-33 ADVANCED LOGIC CONTROLLER,
 - CM-331/43S-SGLR 'WAVE TO LOCK' SWITCH W/ LIGHT RING & SIGN
 - CM-331/42SW-SGLR 'WAVE TO OPEN' SWITCH W/ LIGHT RING & SIGN
 - CM-325/42SW 'WAVE TO OPEN' SWITCH,
 - CX-MDA MAGNETIC DOOR CONTACT
- ADD SUFFIX 'F' TO MODEL NUMBER FOR FRENCH LANGUAGE.



CX-WC16