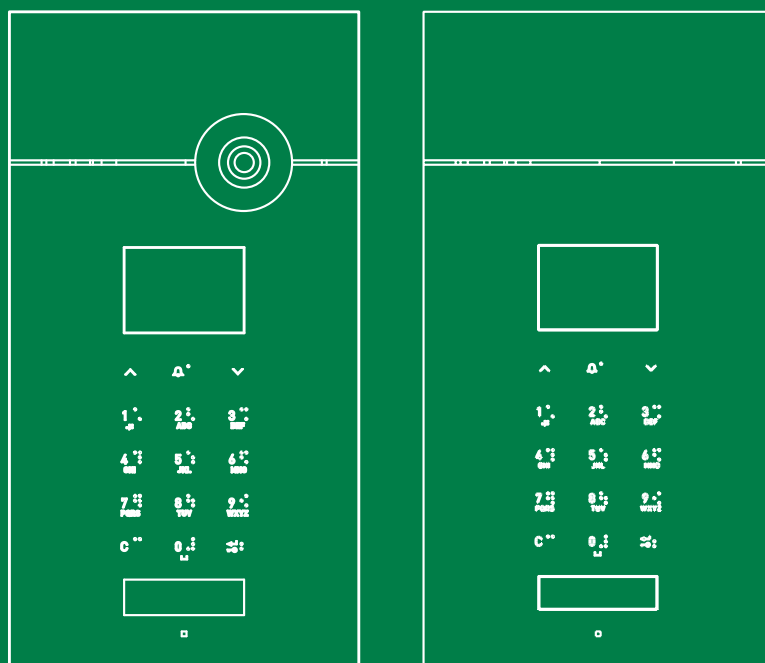


EN

TECHNICAL
MANUAL



Audio/video entrance panel Art. Art. 3451S
Audio entrance panel Art. Art. 3451AS

 **Comelit**[®]
Passion. Technology. Design.

Warning

Intended use

This Comelit product was designed for use in the creation of audio and video communication systems in residential, commercial or industrial settings and in public buildings or buildings used by the public.

Installation

All activities connected to the installation of Comelit products must be carried out by qualified technical personnel, with careful observation of the indications provided in the Manuals / Instruction sheets supplied with those products.

Wires

Cut off the power supply before carrying out any maintenance procedures.

Use wires with a cross-section suited to the distances involved, observing the instructions provided in the system manual.

We advise against running the system wires through the same duct as the power cables (230V or higher).

Safe usage

To ensure Comelit products are used safely:

- carefully observe the indications provided in the Manuals / Instruction sheets
- make sure the system created using Comelit products has not been tampered with / damaged.

Maintenance

Comelit products do not require maintenance aside from routine cleaning, which should be carried out in accordance with the indications provided in the Manuals / Instruction sheets.

Any repair work must be carried out

- for the products themselves, exclusively by **Comelit Group S.p.A.**,
- for systems, by qualified technical personnel.

Disclaimer

Comelit Group S.p.A. does not assume any responsibility for

- any usage other than the intended use
- non-observance of the indications and warnings contained in this Manual / Instruction sheet.

Comelit Group S.p.A. nonetheless reserves the right to change the information provided in this Manual / Instruction sheet at any time and without prior notice.

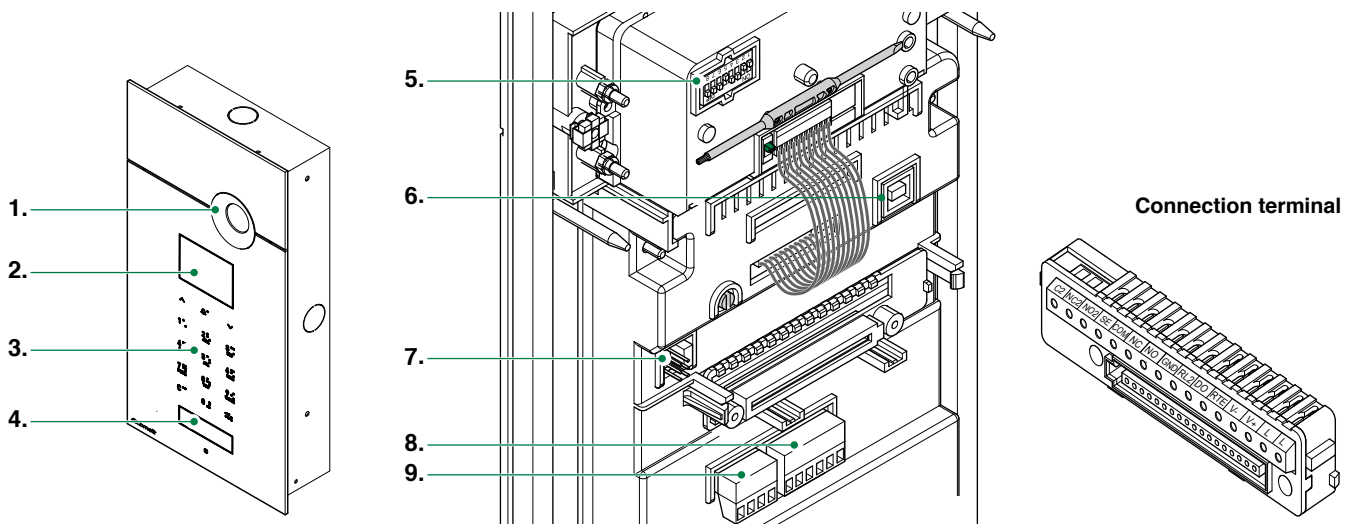
Table of contents

Description.....	4	2.3. SELECT LANGUAGE	24
Technical characteristics.....	5	2.4. SECOND LANGUAGE.....	24
Installation.....	6	2.5. CALL MANAGEMENT.....	25
Mounting keypad panel.....	8	2.6. ACCESS CONTROL.....	26
Installation information.....	8	2.7. NAME ONLY	26
Connections.....	9	2.8. WELCOME MESSAGE.....	26
Variants	9	2.8.1 CHANGE.....	26
Module connection.....	10	2.8.2 ENABLE	27
Simplekey modules.....	10	2.8.3 STATIC MESSAGE	27
Connection to a computer via Art. MOXA TCC-80 20022618.....	10	2.9. SCREENSAVER	27
Programming	11	2.10 KEYPAD SENSITIVITY	27
System performance and layouts	13	2.11 KEYPAD TONE.....	27
General description.....	14	2.12 PROXIMITY SENSOR	27
MAIN FEATURES	14	2.13 BRIGHTNESS.....	28
EXTERNAL DATA MANAGEMENT	14	2.14 WEB SERVER.....	28
Use.....	14	2.14.1 VIEW	28
NAVIGATION MODE	14	2.14.2 DEFAULT SETTINGS.....	28
ENTERING SPECIAL CHARACTERS	14	2.15 DEFAULT SETTINGS.....	28
FEEDBACK.....	15		
Self-testing.....	15	3. Info	29
SETTING THE LANGUAGE	15	External data management	29
SETTING THE TYPE OF DOWNLOAD.....	15	SOFTWARE 1249B.....	29
Programming menu.....	16	INSTALLING THE USB DRIVER FOR CONNECTION TO A PC	29
ACCESSING THE PROGRAMMING MENU	16	USING THE DIRECTORY VIA SOFTWARE ART. 1249B	29
		MULTIDOWNLOAD	30
1. Data management.....	16	WEB SERVER.....	30
1.1. Names	16	CONNECTION TO THE WEB SERVER VIA ETHERNET	30
1.1.1 ENTER NAMES	16	LOCAL CONNECTION TO THE WEB SERVER.....	31
1.1.2 CHANGE NAMES	17	REMOTE CONNECTION TO THE WEB SERVER	31
1.1.3 DELETE NAMES	18	PORT FORWARDING SETTING FOR REMOTE CONNECTION.....	31
1.1.4 CLEAR ALL NAMES	18	ASSIGN A PUBLIC STATIC IP ADDRESS TO YOUR ROUTER.....	31
1.2. PASSWORD.....	18	ASSIGN A DYNAMIC DNS ADDRESS TO YOUR ROUTER.....	31
1.2.1 ENTER PASSWORD	18	USE OF THE WEB SERVER	32
1.2.2 CHANGE PASSWORD.....	18	CONFIGURATION	32
1.2.3 DELETE PASSWORD.....	19	DATA MANAGEMENT	32
1.2.4 CLEAR ALL PASSWORDS.....	19	Name Management	33
1.3. DIGITAL KEYS.....	19	Password Management (only with Access Control deactivated)33	
1.3.1 ENTER KEY.....	19	Add Name.....	34
1.3.2 CHANGE KEY	19	Add Password (only with Access Control deactivated).....	34
1.3.3 DELETE KEY	19	Edit Name.....	35
1.2.3 CLEAR ALL KEYS	20	Edit Password (only with Access Control deactivated)	35
1.4. SUPERCODE	20	Message Management	36
1.4.1 ENTER NEW CODE	20	SETUP	37
1.4.2 DEFAULT SETTINGS.....	20	UPDATE	38
2. Settings	20		
2.1. TYPE OF DOWNLOAD.....	20		
2.2. SYSTEM PARAMETERS	20		
2.2.1 SPEAKER PARAMETERS	20		
2.2.1.1 Enter Audio Time	20		
2.2.1.2 Enter Door Lock Time.....	20		
2.2.1.3 Enter Reset Time	20		
2.2.1.4 View	21		
2.2.1.5 Advanced Options.....	21		
2.2.2 RS485 ADDRESS	24		
2.2.2.1 RS485 Address.....	24		

Description

Flush-mounted entrance panel (fitted level with the wall) and 3 mm thick stainless steel plate. Certified as IK08. Complete with 128x64 dot LCD graphic display and 15 buttons integrated into the plate, with no mechanical movement. Also functions as an electronic key code. Two search buttons are used to scroll through the names; alternatively, the first letter of the required name can be entered. Once the desired username is displayed, simply press the call button. The call can also be made by directly entering the user code. It can also be used to customise an initial welcome message and can operate with a dual user interface language. Fitted with rfid reader for local door lock control and an additional relay for various uses. It can be used in conjunction with Simplekey electronic keys for automatic updating of names in the directory. It saves up to 4000 user names, 4000 lock-release passwords and 4000 rfid keys. Users and settings are simple to program using PC software art. 1249B (included, with USB connection cable) via a USB or RS485 port, locally on the digital module itself or, thanks to the integrated web server, remotely via connection to the ethernet port.

- Art. 3451AS can be used SB1 audio systems
- Art. 3451S can be used SBTOP audio/video systems



1. Camera (only Art.3451S)
2. 128X64 dots/pitch LCD display
3. Alphanumeric keypad with Braille script
4. RFID sensor
5. Programming dip switch
6. USB input for downloading / uploading data
7. **CV1** for filter on C.NC.NO contact
CV2 for accessing the programming phase
8. Terminal block for RS485 connection: 12V, 0V, D1+, D1-, D2+, D2- for downloading data via 485.
9. Ethernet connection terminal block for Webserver access.

Description of connection terminal

- LL** bus line connection
- V+V-** external unit power supply
- RTE** timed request to exit button input
- DO** door open indication input
- RL2** for future use
- GND** negative terminal
- NO, NC, COM** relay contacts
- SE** electric lock connection
- NO2, NC2, C2**, for future use

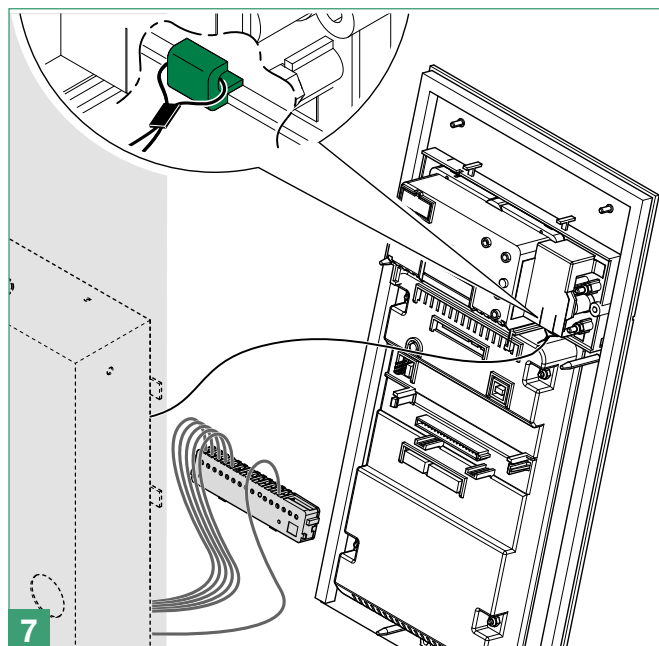
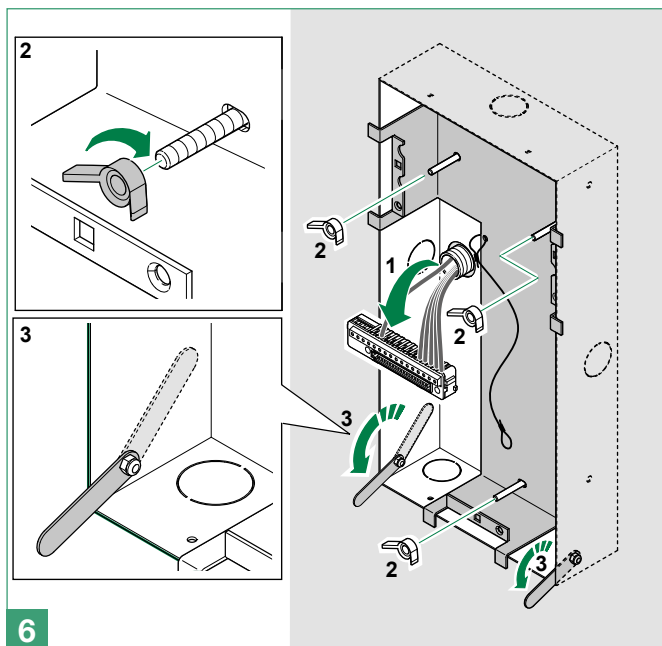
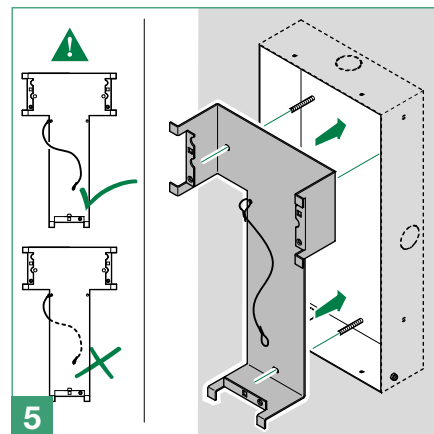
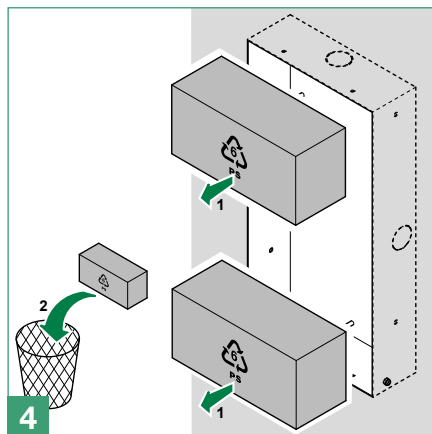
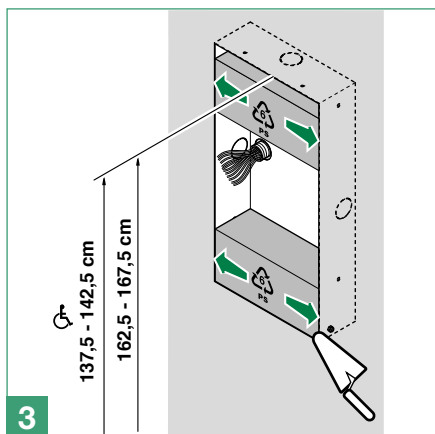
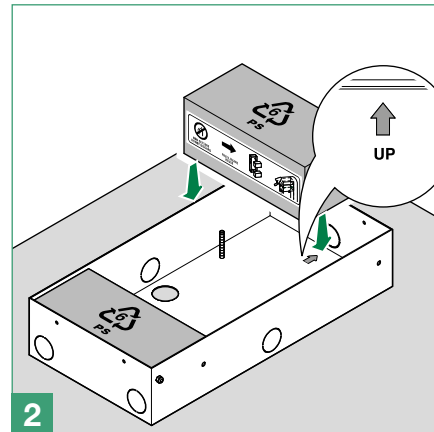
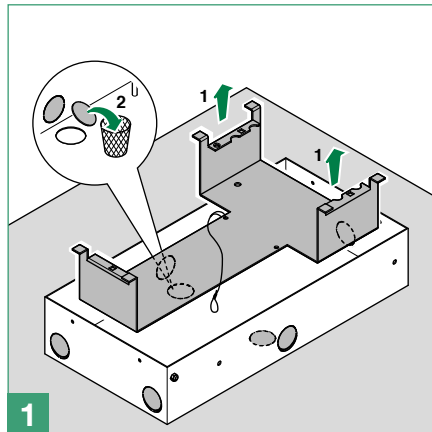
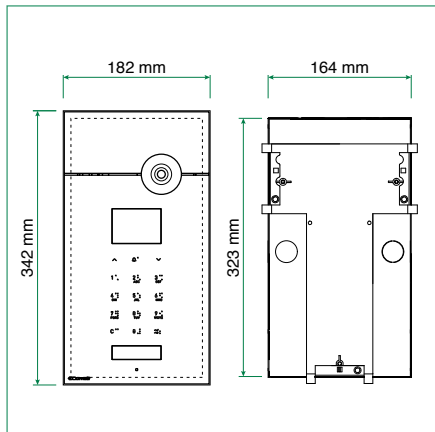
Technical characteristics

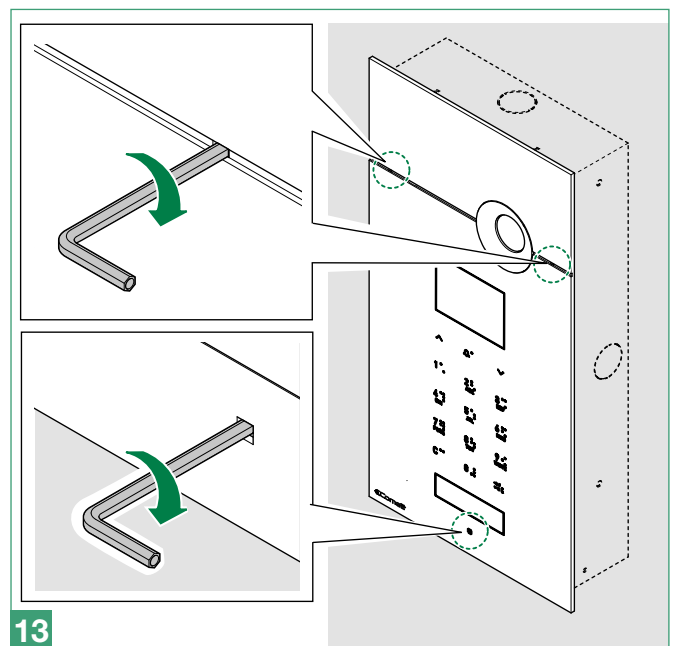
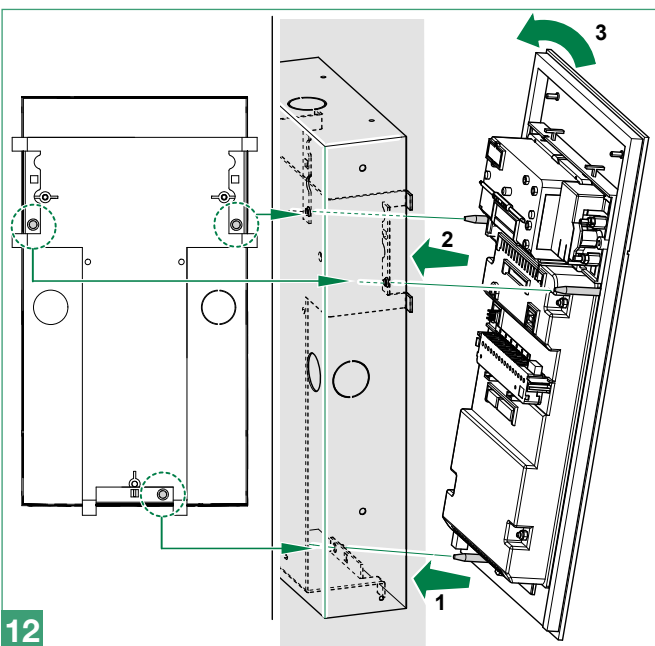
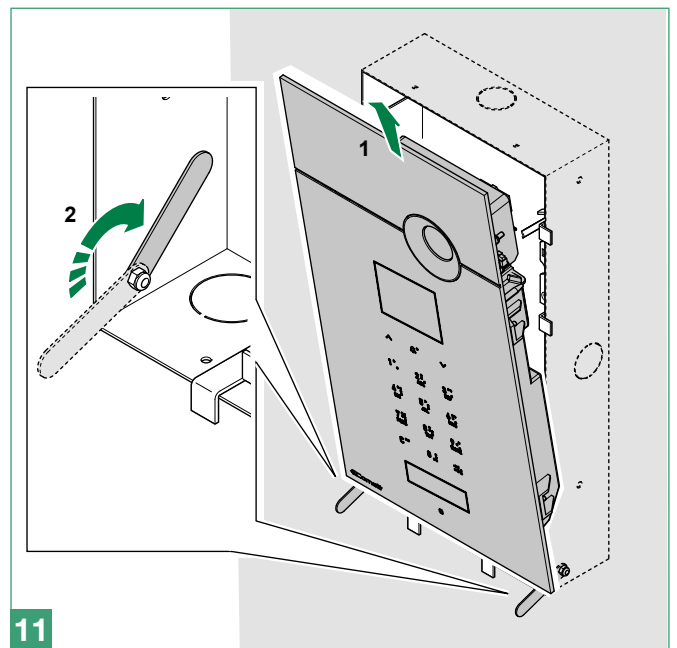
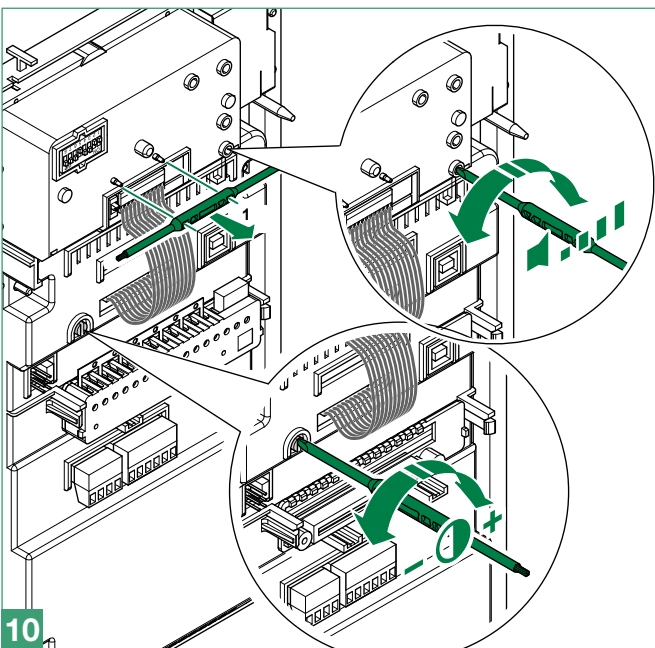
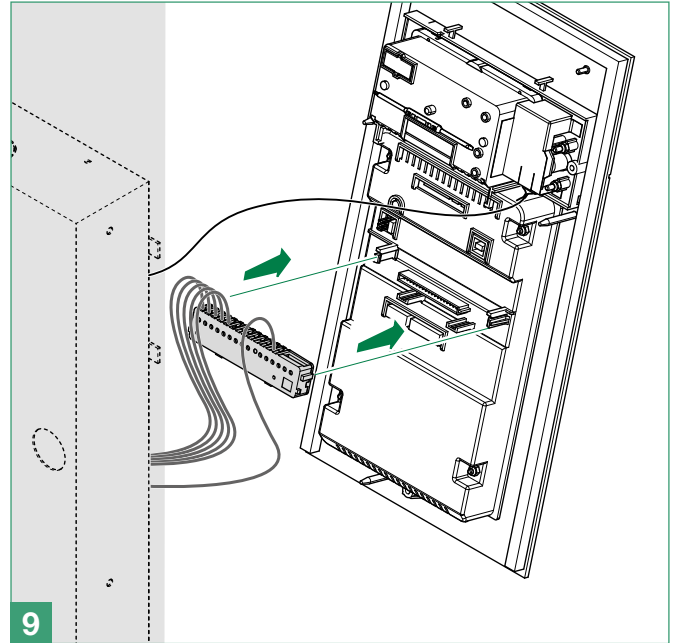
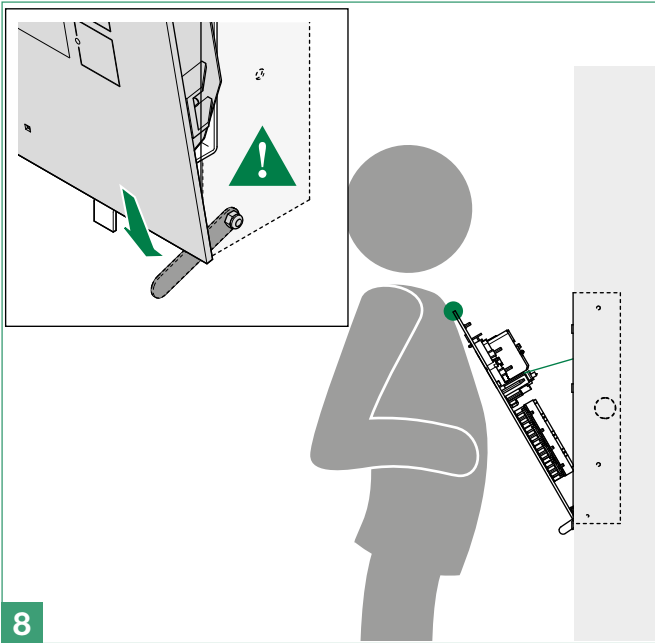
	Art. 3451S	Art. 3451AS
MAIN FEATURES		
Flush-mounted	Yes	Yes
Wall-mounted	Yes	Yes
Horizontal resolution (TVL)	420	-
S/N ratio (dB)	48	-
Maximum current absorption (mA)	400	-
Loudspeaker volume control	Yes	Yes
Operating temperature (°C)	-25÷ 55	-25÷ 55
Vandal Resistant rating (IK code)	IK08	IK08
FUNCTIONS		
Key button function	Yes	Yes
HARDWARE SPECIFICATIONS		
Visual signalling	Yes	Yes
Acoustic signalling	Yes	Yes
Sensitive Touch technology	Yes	Yes
GENERAL DATA		
Product height (mm)	342	342
Product width (mm)	182	182
Product depth (mm)	3	3
COMPATIBILITY		
Simplebus Top audio/video system	Yes	-
Simplebus 1 audio system	Yes	Yes

Installation

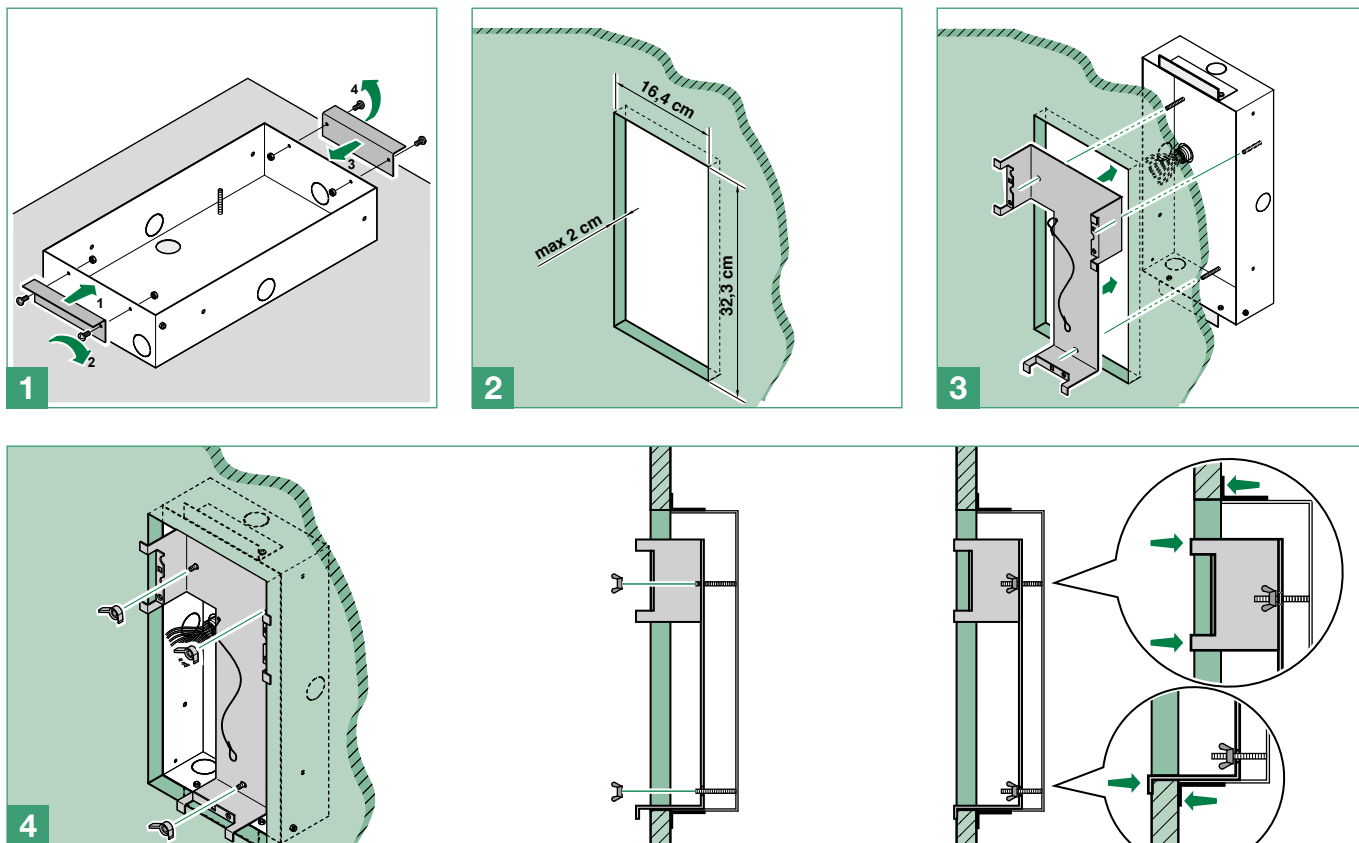


Use the polystyrene blocks included in the packaging.





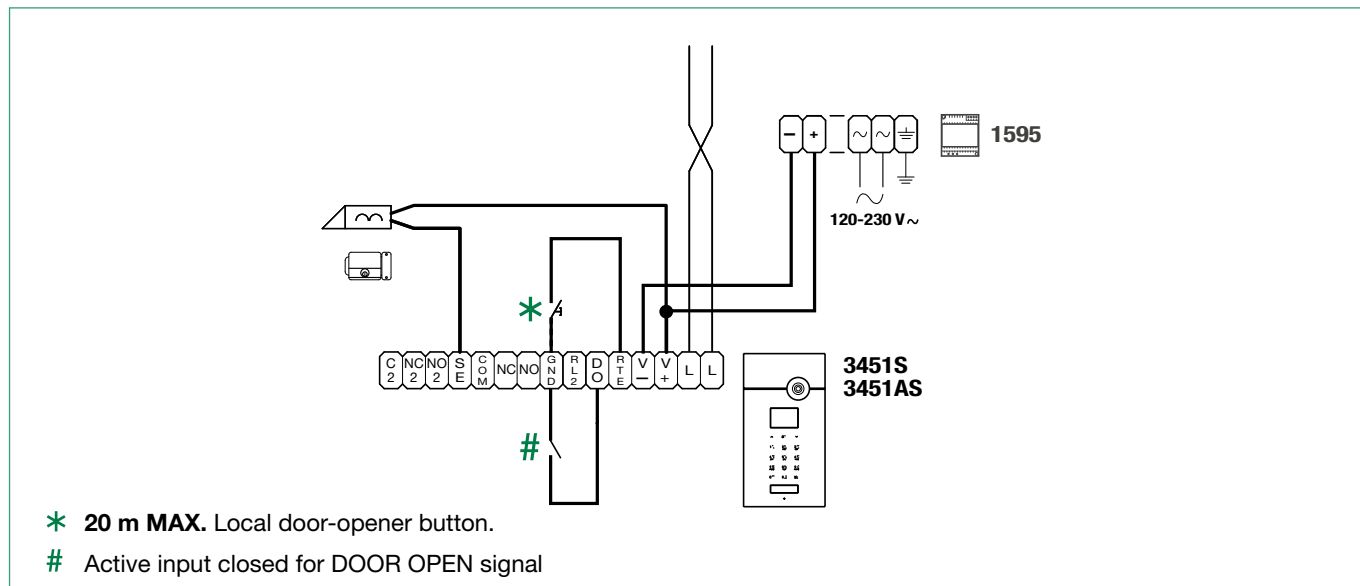
Mounting keypad panel



Installation information

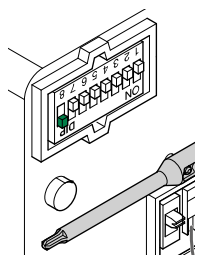
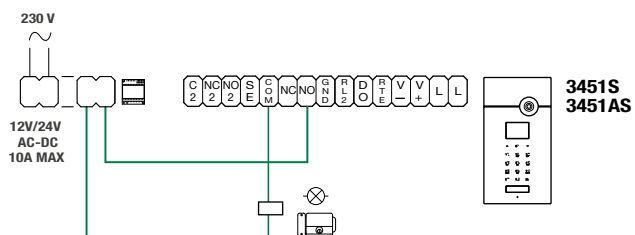
- For further information on the functions and characteristics of the SBTOP system, see [SBTOP audio/video system](#).
- The system, audio only with Art. 3451AS, can manage up to 240 users, connecting MAX 100 internal units for each riser and 3 internal units with the same user code.
- Modules Art. 4680C/1622 normally function as the main external unit (timed busy signal).
- To set them as a secondary external unit (busy signal active for the whole time the riser is in use), set all the selector DIP switches to ON.
- When a call is transmitted from the external unit, if a busy tone is heard instead of the ringtone, this means communication with another external unit is in progress.
- In the event of a persistent short-circuit on the bus line, the external unit emits an intermittent signalling tone.

Connections



Variants

Variant for using the external unit relay

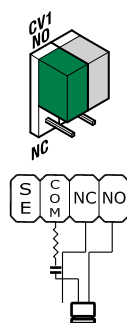
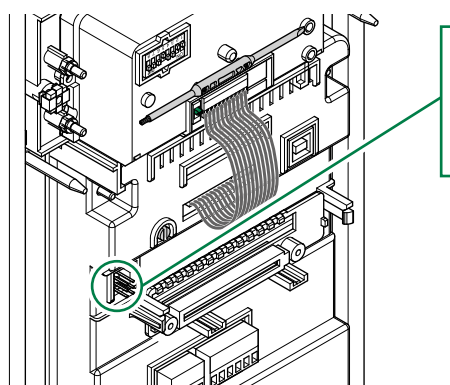
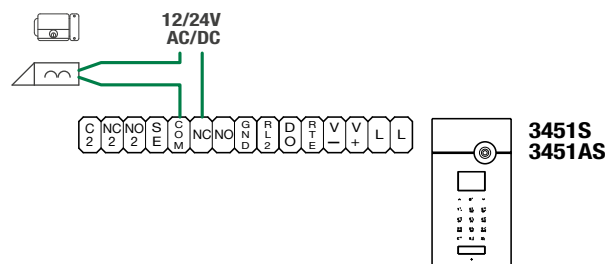


“C.NC.NO relay activation on actuator command: 2 sec”

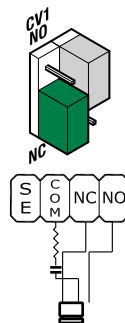
Set dip switches in permanent mode as shown in figure (Dip switch 8 ON, Dip switches 1,2,3,4,5,6,7 OFF)

Applies to Art. 4680C/1622 with R.I. 041 or greater

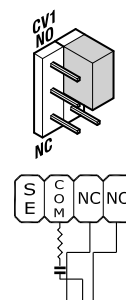
Variant for using a safety lock



On C. NO contacts.

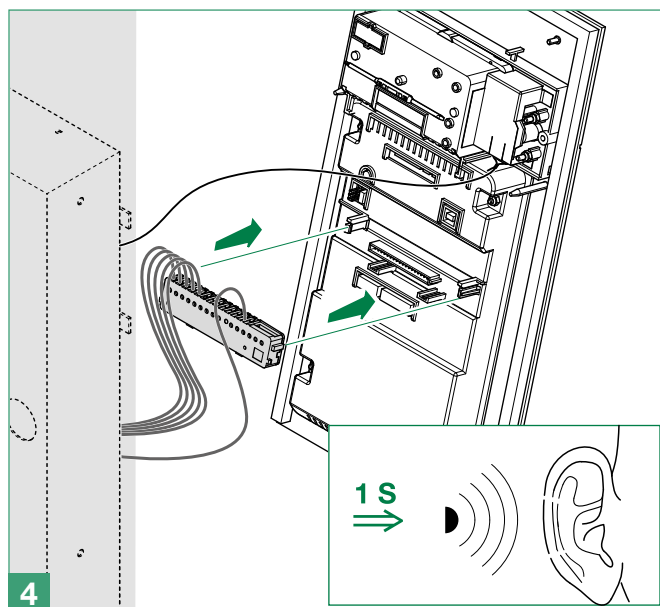
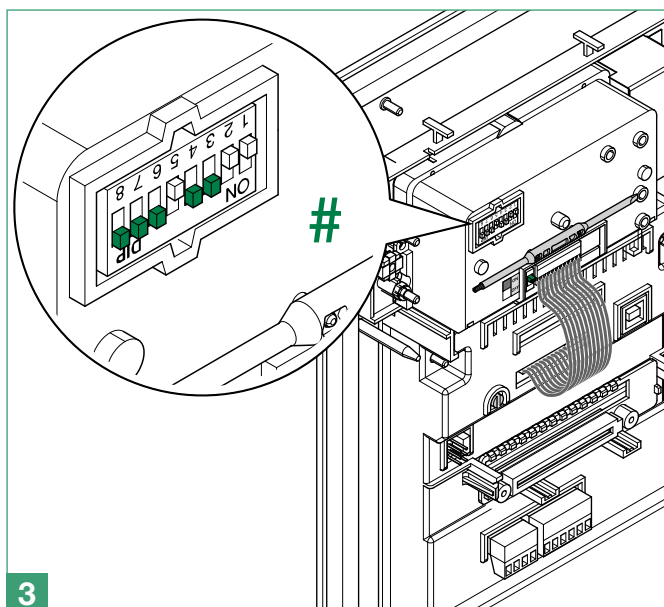
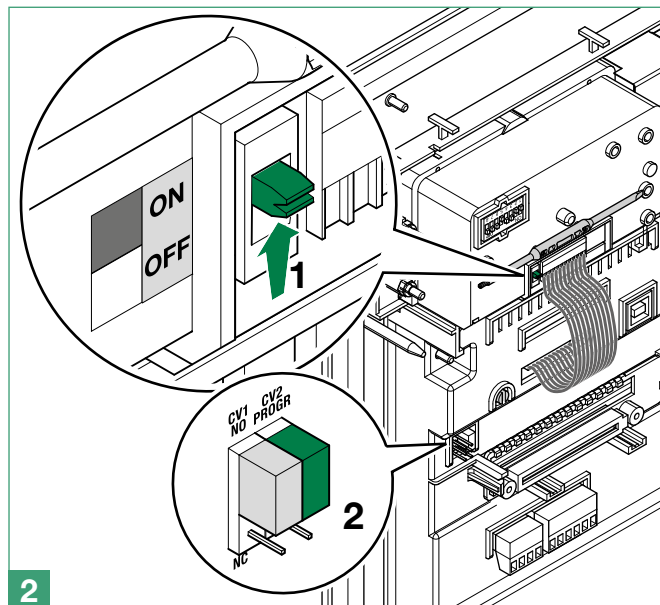
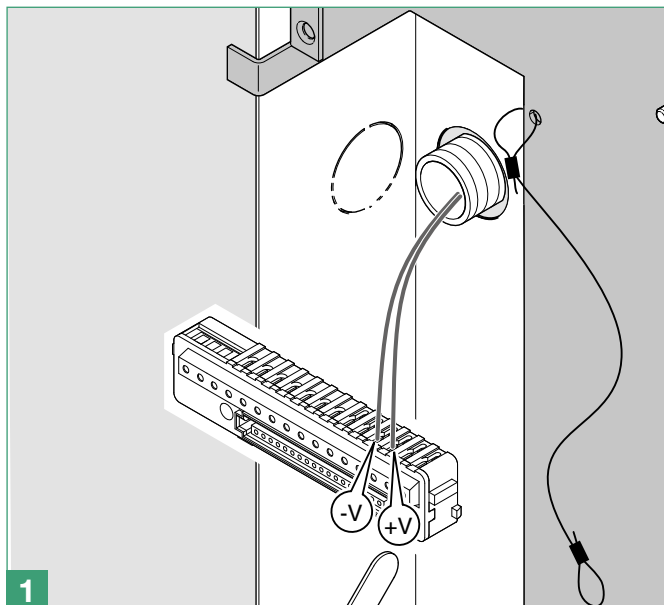


On C. NC contacts.

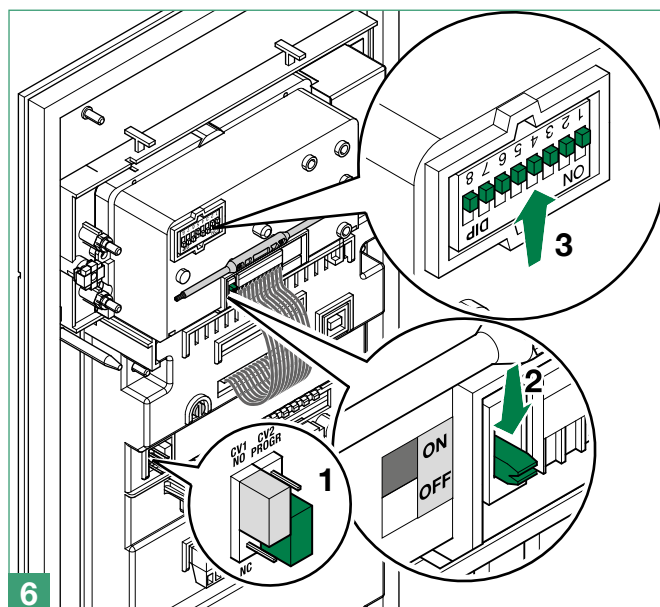
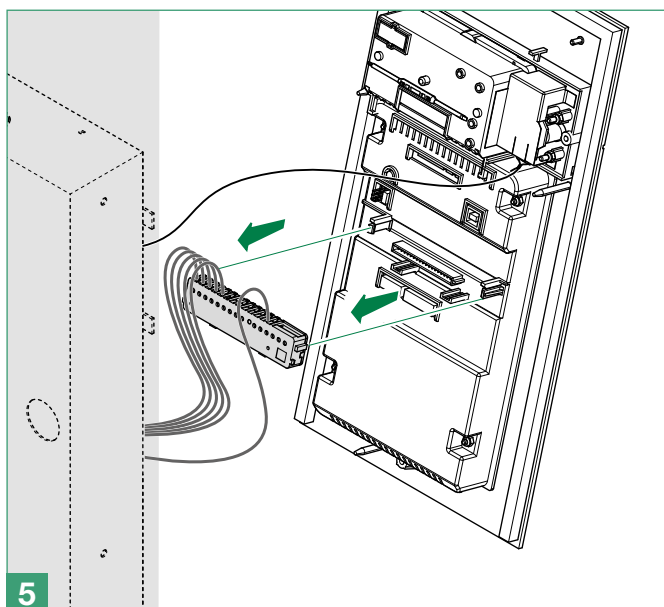


Excluded: voltage-free contact

Programming



Set the dip switches for the function you wish to program, see the table



CODE	DIP SWITCH ON	FUCNTION
		De-misting heating element
213	1,3,5,7,8	OFF (default)
212	3,5,7,8	ON
		Audio-visual messages
210	2,5,7,8	visual messages only
211	1,2,5,7,8	Swedish
214	2,3,5,7,8	OFF (default)
215	1,2,3,5,7,8	Italian
216	4,5,7,8	French
217	1,4,5,7,8	Spanish
218	2,4,5,7,8	Dutch
219	1,2,4,5,7,8	Greek
220	3,4,5,7,8	English
221	1,3,4,5,7,8	German
222	2,3,4,5,7,8	Portuguese
		Door lock
223	1,2,3,4,5,7,8	Door lock command on SE in AC (default)
224	6,7,8	Door lock command on SE in enhanced AC
225	1,6,7,8	Door lock command on SE in DC
245	1,3,5,6,7,8	Door lock time: 2 sec + deactivation tone (default)
246	2,3,5,6,7,8	Door lock time: 4 sec
247	1,2,3,5,6,7,8	Door lock time: 8 sec
248	4,5,6,7,8	Door lock confirmation tone: enabled
251	1,2,4,5,6,7,8	C.NC.NO relay in parallel with SE (default)
252	3,4,5,6,7,8	Lock-release always enabled (default)
253	1,3,4,5,6,7,8	Lock-release only enabled for user called
		Actuator control management
		N.B. the system should not include Art. 1256 in generic actuator mode.
229	1,3,6,7,8	Enabling C.NC.NO relay on actuator control: 2 sec
230	2,3,6,7,8	Enabling C.NC.NO relay on actuator control: 4 sec
231	1,2,3,6,7,8	Enabling C.NC.NO relay on actuator control: 8 sec
228	3,6,7,8	Actuator control on serial line S: disabled (default)
227	1,2,6,7,8	Actuator control on serial line S: enabled
		System functions
204	3,4,7,8	Inox audio settings (default)
232	4,6,7,8	Awaiting response time: 60 sec (default)
233	1,4,6,7,8	Awaiting response time: 120 sec
234	2,4,6,7,8	Awaiting response time: 30 sec
235	1,2,4,6,7,8	Talk time: 90 sec (default)
236	3,4,6,7,8	Talk time: 180 sec
237	1,3,4,6,7,8	Self-ignition: enabled (default)
238	2,3,4,6,7,8	Self-ignition: disabled
239	1,2,3,4,6,7,8	Confirmation tone on user call: enabled (default)
240	5,6,7,8	Confirmation tone on user call: disabled

243	1,2,5,6,7,8	Reset wait time: 10 sec (default)
244	3,5,6,7,8	Reset wait time: 1 sec
208	5,7,8	Reset after lock-release in audio: enabled (default)
209	1,5,7,8	Reset after lock-release in audio: disabled
249	1,4,5,6,7,8	Call transmission: single (default)
250	2,4,5,6,7,8	Call transmission: triple
241	1,5,6,7,8	Control of internal units connected to Art. 4680C/1622: up to 70 (default)
242	2,5,6,7,8	Control of internal units connected to Art. 4680C/1622: from 71 to 100
		System mode
0		Simplebus (default)
255	1,2,3,4,5,6,7,8	Simplebus Top (NO Art. 4680KC)
254	2,3,4,5,6,7,8	Restore default

System performance and layouts

For further information of system performance and to view installation layouts, click on the type of system that best meets your needs:

with Art. 3451S

- [SBTOP audio/video system](#) for the creation of audio-video systems for *residential complexes*.

with Art. 3451AS

- [SB1 audio system](#) for the creation of audio systems for *residential complexes*.

General description

MAIN FEATURES

- Directory memory: 4000 names (of 20 characters), 4000 passwords, 4000 keys.
- 16 languages available with the option of setting a second language.
- 2 operating modes:
 - Access control disabled
 - Access control enabled
- 4 Simplebus or Simplebus Top call management modes:
 - Standard
 - Indirect code
 - Immotec standard (for future uses)
 - Immotec indirect (for future uses)
- Display of name only without code
- Screensaver activation
- Option of customising:
 - Keypad sensitivity
 - Keypad tone
 - Initial welcome message (on 4 lines of 10 characters each)
 - Name directory standby messages

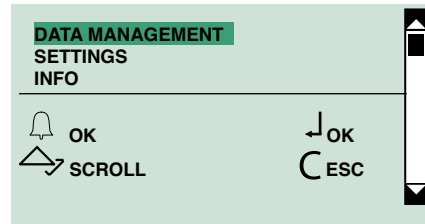
EXTERNAL DATA MANAGEMENT

- Software Art. **1249B** (R.I. 003 - SW rev. 2.3 or higher) can be used (only while access control is disabled) to: enter (upload) and read (download) names and passwords by means of a PC connection via USB or over an RS485 line.
- The **Webserver** allows you to change certain configurations/settings of the device, to manage directory data to update firmware and web pages from a browser (also remotely).

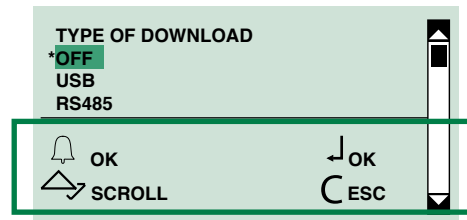
Use

NAVIGATION MODE

- ▶ Scroll through the menu using ^ v.
- ▶ Press or to confirm.



Certain buttons perform different functions depending on the context: to use the device correctly you must follow the on-screen suggestions



Highlighting indicates that the element is selected:



* indicates that the option is enabled: ***OFF**

ENTERING SPECIAL CHARACTERS

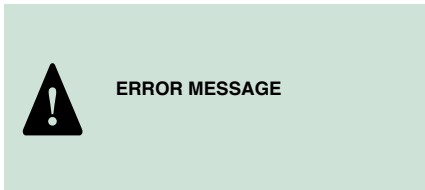
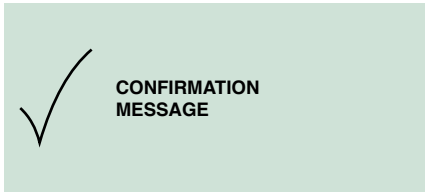
If alphanumeric characters are permitted (for example in **data management/names/enter names**), press the corresponding key repeatedly to enter the special characters.

KEYPAD: Special characters		
1 °	2 ° ABC	3 ° DEF
,;:_-#*"1	ABCÅÄÅÆBČĆ2	DEFÉËË3
4 ° GHI	5 ° JKL	6 ° MNO
GHI4	JKLŁ5	MNOŃÖØÓ6
7 ° PQRS	8 ° TUV	9 ° WXYZ
PQRS7	TUVÜ8	WXYZ9
C °°	0 °	
	space 0	

FEEDBACK

The system provides the following messages:

- **confirmation:** when a procedure is completed successfully
- **error:** when a procedure is not permitted or has not been successful
- **please wait:** when a procedure is in progress

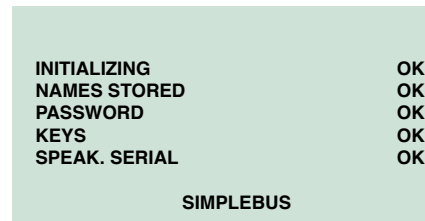


Self-testing

On power-up, the device runs a diagnostic test of the connections to check for correct speaker module communication and configuration.

The message PLEASE WAIT indicates self-testing in progress. On completion of self-testing, press the **C** key to put the module in standby.

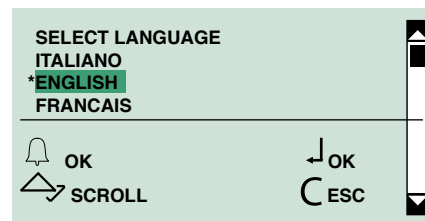
The word OK should appear next to the menu items with the name SIMPLEBUS or SIMPLEBUS TOP at the bottom of the screen depending on the configuration of the speaker module and the directory module.



SETTING THE LANGUAGE

When you switch the system on, you will be asked to select the desired language (default = Italian).

1. Scroll through the list using \wedge \vee .
2. Press \hookrightarrow or \leftarrow to confirm.

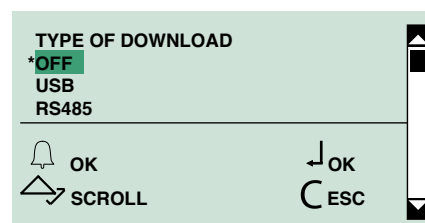


3. Press **C** to exit.

SETTING THE TYPE OF DOWNLOAD

In SIMPLEBUS/SIMPLEBUS TOP mode and with USB connected: when you switch the system on, you will be asked to select the type of download.

1. Scroll through the list using \wedge \vee .
2. Press \hookrightarrow or \leftarrow to confirm.



3. Press **C** to exit.



For downloading in RS485 mode, see diagram "Connection to a computer via Art. MOXA TCC-80 20022618".

To avoid malfunctions: during download in USB mode, the keypad must not be powered by an external source

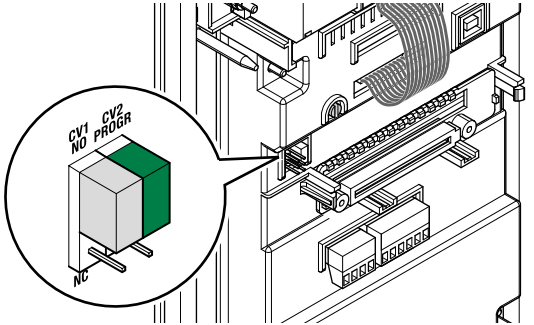
Programming menu

From the programming menu you can:

- manage the entry, editing and deletion of names, codes, passwords, keys and supercodes;
- change the settings (type of download, system parameters, language, second language, call management...);
- view information on the device.

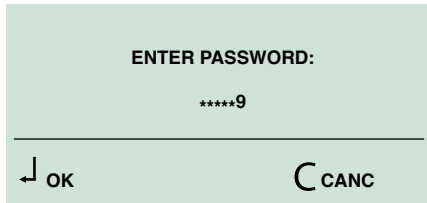
ACCESSING THE PROGRAMMING MENU

- ▶ Move **CV2** and power up the module.

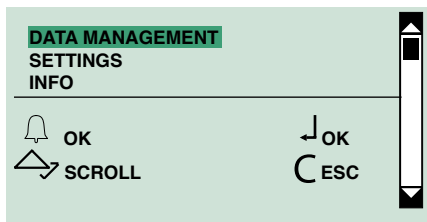


or:

1. Press
2. Enter the supercode (default 778899).



3. Press to confirm.



1. Data management

Before storing data in the directory, we recommend selecting: the call management mode, see “2.5. CALL MANAGEMENT”



the access control mode you wish to adopt, see “2.6. ACCESS CONTROL”.

Data entry and changes can be managed externally using software 1249B (R.I. 003 - SW rev. 2.3 or later) or through Webserver.

1.1. Names

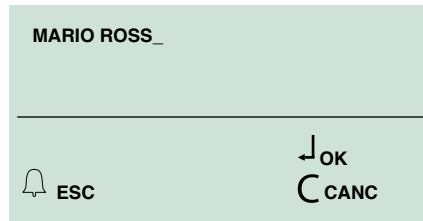
1.1.1 ENTER NAMES



Not available if the call mode is IMMOTEC STANDARD or IMMOTEC INDIRECT (see section “2.5. CALL MANAGEMENT”)

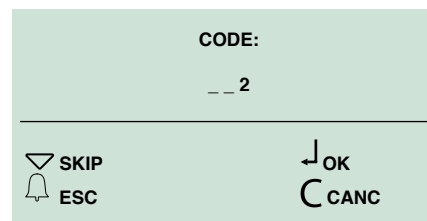
“Enter names” can be used to enter names and all the data associated with them (call code, indirect code, password, RFID key).

1. Access programming mode, see **“ACCESSING THE PROGRAMMING MENU”**
2. Select **data management/names/enter names** by pressing or to confirm.
3. Enter the name.

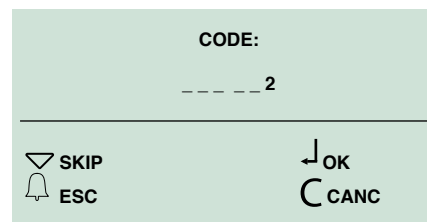


4. Press to confirm.
5. Enter the “call code” and press to confirm.

IN SIMPLEBUS MODE



IN SIMPLEBUS TOP MODE (see **“2.5. CALL MANAGEMENT”**)

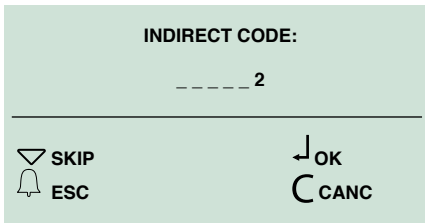


or:

- ▶ press to skip entry.

ONLY WITH “INDIRECT CODE” ENABLED

6. Enter the “indirect code” and press to confirm.



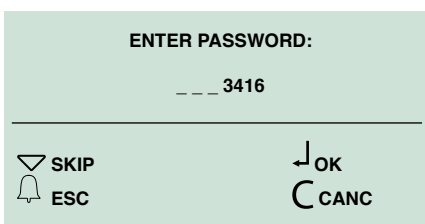
or:

▶ press to skip entry.

ONLY WITH “ACCESS CONTROL” ENABLED

7. Enter the password and press to confirm.

The password must be at least 4 characters long

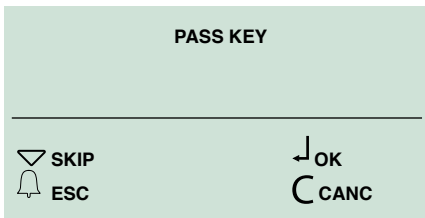


» *The red and green LEDs flash alternately to indicate that the device is waiting for a key to be registered.*

or:

▶ press to skip entry.

8. Move the key over the RFID sensor.



» *The confirmation message “KEY DETECTED” “COLOUR” will appear on the display.*

or:

▶ press to skip entry.

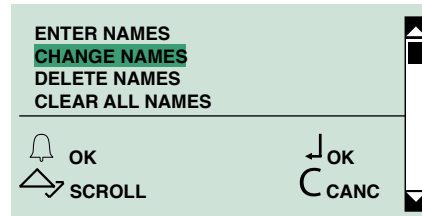
1.1.2 CHANGE NAMES

“Change names” can be used to change a name and call code, plus the indirect code associated with it.



not available if the call mode is IMMOTEC STANDARD or IMMOTEC INDIRECT (see section “2.5. CALL MANAGEMENT”)

1. Access programming mode, see [“ACCESSING THE PROGRAMMING MENU”](#).
2. Select **data management/names/change names** by scrolling through the menu using and pressing or to confirm.

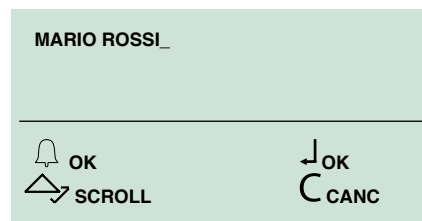


3. Enter the name (full name or just the first letter).



4. Press to start searching.

5. Scroll using and/or press or to confirm the name you wish to change.



6. Change the name and press to confirm.

7. Change the “call code” and press to confirm.

ONLY WITH “INDIRECT CODE” ENABLED

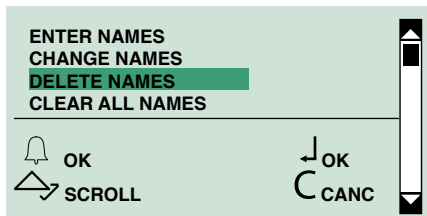
8. Change the indirect code and press to confirm.

9. Press to exit.

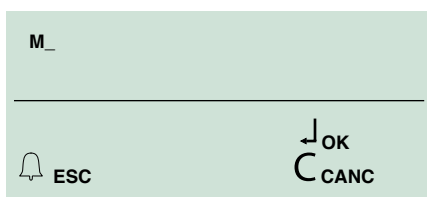
1.1.3 DELETE NAMES

“Delete names” can be used to remove a name and the data associated with it.

1. Access programming mode, see [”ACCESSING THE PROGRAMMING MENU”](#).
2. Select data **management/names/delete names** by scrolling through the menu using \wedge \vee and pressing \hookrightarrow or \leftarrow to confirm.



3. Enter the name (full name or just the first letter).

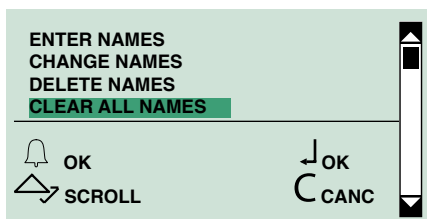


4. Press \leftarrow to start searching.
5. Scroll using \wedge \vee and/or press \hookrightarrow or \leftarrow to confirm the name you wish to remove.
6. Press \leftarrow to exit.

1.1.4 CLEAR ALL NAMES

“Clear all names” can be used to remove all names and the data associated with them.

1. Access programming mode, see [”ACCESSING THE PROGRAMMING MENU”](#).
2. Select data **management/names/clear all names** by scrolling through the menu using \wedge \vee and pressing \hookrightarrow or \leftarrow to confirm.



3. Press \leftarrow to confirm deletion or press \leftarrow to exit.

1.2. PASSWORD

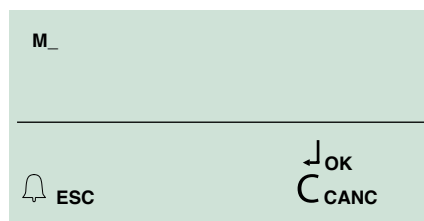
Password entry makes it possible to activate the door lock relay.

1.2.1 ENTER PASSWORD


1. Access programming mode, see [”ACCESSING THE PROGRAMMING MENU”](#).
2. Select data **management/passwords/enter** by scrolling through the menu using \wedge \vee and pressing \hookrightarrow or \leftarrow to confirm.

ONLY WITH “ACCESS CONTROL” ENABLED

3. Enter the name to which you wish to assign the password (in full or just the first letter).



4. Press \leftarrow to start searching.
5. Scroll using \wedge \vee and/or press \hookrightarrow or \leftarrow to confirm the selected name.
6. Enter the password (max. 6 characters).

 **The password must be at least 4 characters long**

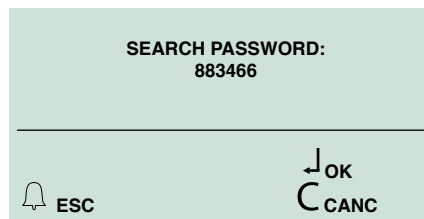
7. Press \leftarrow to confirm or press \leftarrow to exit.

1.2.2 CHANGE PASSWORD

1. Access programming mode, see [”ACCESSING THE PROGRAMMING MENU”](#).
2. Select data **management/passwords/change** by scrolling through the menu using \wedge \vee and pressing \hookrightarrow or \leftarrow to confirm.

ONLY WITH “ACCESS CONTROL” DISABLED

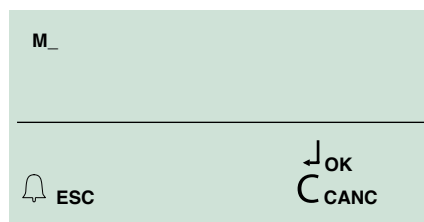
- 3a. Enter the password you want to change



- 4a. Press \leftarrow to start searching.

ONLY WITH “ACCESS CONTROL” ENABLED


- 3b. Enter the name to which the password you wish to change is assigned (in full or just the first letter).



- 4b. Press \leftarrow to start searching.

5b. Scroll using \wedge \vee and/or press \hookrightarrow or \leftarrow to confirm the selected name.

6. Change the password and press \leftarrow to confirm.

 **The password must be at least 4 characters long**

7. Press C to exit.

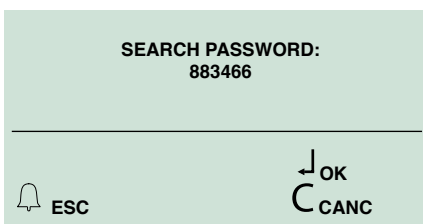
1.2.3 DELETE PASSWORD

1. Access programming mode, see **"ACCESSING THE PROGRAMMING MENU"**.

2. Select **data management/passwords/delete** by scrolling through the menu using \wedge \vee and pressing \hookrightarrow or \leftarrow to confirm.

ONLY WITH "ACCESS CONTROL" DISABLED

3a. Enter the password you want to delete.



4a. Press \leftarrow to start searching.

ONLY WITH "ACCESS CONTROL" ENABLED

3b. Enter the name to which the password you wish to delete is assigned (in full or just the first letter).



4b. Press \leftarrow to start searching.

5b. Scroll using \wedge \vee and/or press \hookrightarrow or \leftarrow to confirm the selected name.

6. Press \leftarrow to delete the password.

7. Press C to exit.

1.2.4 CLEAR ALL PASSWORDS

1. Access programming mode, see **"ACCESSING THE PROGRAMMING MENU"**.

2. Select **data management/passwords/clear all** by scrolling through the menu using \wedge \vee and pressing \hookrightarrow or \leftarrow to confirm.

3. Press \leftarrow to confirm deletion or press C to exit.

1.3. DIGITAL KEYS



The use of RFID keys can only be managed when "access control" mode is enabled.

ONLY WITH "ACCESS CONTROL" ENABLED

1.3.1 ENTER KEY

1.3.2 CHANGE KEY

1. Access programming mode, see **"ACCESSING THE PROGRAMMING MENU"**.

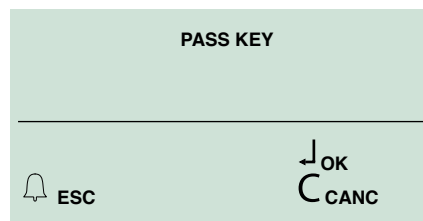
2. Select **data management/keys/(enter/change)** by scrolling through the menu using \wedge \vee and pressing \hookrightarrow or \leftarrow to confirm.

3. Enter the name for which you wish to assign/change the key (in full or just the first letter).



4. Press \leftarrow to start searching.

5. Scroll using \wedge \vee and/or press \hookrightarrow or \leftarrow to confirm the selected name.



» The red and green LEDs flash alternately to indicate that the device is waiting for a key to be registered.

6. Move the key over the RFID sensor.

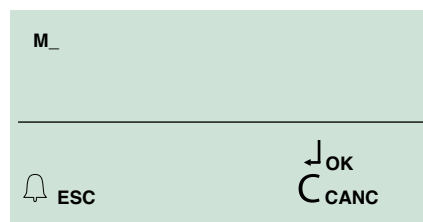
» The confirmation message "KEY DETECTED COLOUR ..." will appear on the display.

1.3.3 DELETE KEY

1. Access programming mode, see **"ACCESSING THE PROGRAMMING MENU"**.

2. Select **data management/keys/delete** by scrolling through the menu using \wedge \vee and pressing \hookrightarrow or \leftarrow to confirm.

3. Enter the name for which you wish to delete the key (in full or just the first letter).



4. Press \leftarrow to start searching.

5. Scroll using \wedge \vee and/or press \hookrightarrow or \leftarrow to confirm the selected name.

6. Press to delete the key or press **C** to exit.

1.2.3 CLEAR ALL KEYS

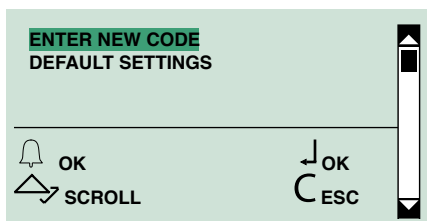
1. Access programming mode, see ["ACCESSING THE PROGRAMMING MENU"](#).
2. Select **data management/keys/clear** all by scrolling through the menu using \wedge \vee and pressing or to confirm.
3. Press to confirm deletion or press **C** to exit.

1.4. SUPERCODE

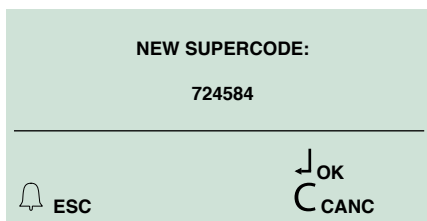
1.4.1 ENTER NEW CODE

The supercode (default 778899) is used to access the programming menus.

1. Access programming mode, see ["ACCESSING THE PROGRAMMING MENU"](#).
2. Select the menu entries: Select **data management/supercode/enter** new code by scrolling through the menu using \wedge \vee and pressing or to confirm.



3. Change the supercode (max. 6 digits).



The supercode must be at least 4 digits long

4. Press to confirm.

1.4.2 DEFAULT SETTINGS

1. Access programming mode, see ["ACCESSING THE PROGRAMMING MENU"](#).
2. Select **data management/supercode/default** settings by scrolling through the menu using \wedge \vee and pressing or to confirm.

The command cannot be cancelled.

2. Settings

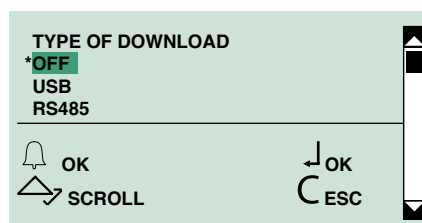
2.1. TYPE OF DOWNLOAD

1. Access programming mode, see ["ACCESSING THE PROGRAMMING MENU"](#).
2. Select: **settings/type of download**.
3. Choose between:

OFF
USB
RS485



For downloading in RS485 mode, see diagram ["Connection to a computer via Art. MOXA TCC-80 20022618"](#).

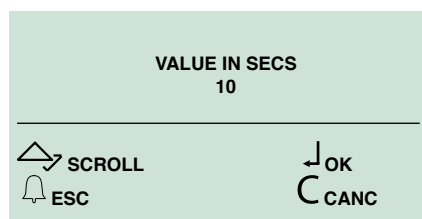


2.2. SYSTEM PARAMETERS

2.2.1 SPEAKER PARAMETERS

2.2.1.1 Enter Audio Time

1. Access programming mode, see ["ACCESSING THE PROGRAMMING MENU"](#).
2. Select: **settings/system parameters/speaker parameters/audio time**.
3. Enter the desired value:
RANGE = 10 - 180 sec.



4. Confirm.

2.2.1.2 Enter Door Lock Time

1. Access programming mode, see ["ACCESSING THE PROGRAMMING MENU"](#).
2. Select: **settings/system parameters/speaker parameters/door lock time**.
3. Enter the desired value:
RANGE = 1- 8 sec.
4. Confirm.

2.2.1.3 Enter Reset Time

1. Access programming mode, see ["ACCESSING THE PROGRAMMING MENU"](#).
2. Select: **settings/system parameters/speaker**

parameters/reset time.

3. Enter the desired value.

RANGE = 1- 10 sec.

4. Confirm.

2.2.1.4 View

1. Access programming mode, see **"ACCESSING THE PROGRAMMING MENU"**.

2. Select: **settings/system parameters/speaker parameters/view.**

» Reproduces the parameter values: audio time, door lock time and reset time.

AUDIO TIME	010
DOOR LOCK TIME	02
RESET WAIT TIME	10
SIMPLEBUS	

2.2.1.5 Advanced Options

2.2.1.5.1 LOCK ON SE

A) TYPE

Allows setting of the door lock type on the SE output of the speaker module

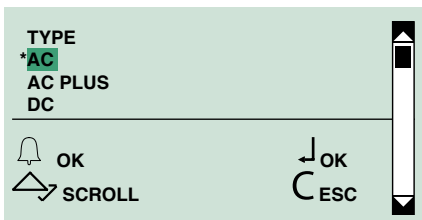
1. Access programming mode, see **"ACCESSING THE PROGRAMMING MENU"**.

2. Select: **settings/system parameters/speaker parameters/advanced options/lock on SE/type.**

3. Choose between:

- AC (default)**
- AC PLUS**
- DC**

4. Confirm.



B) CONFIRMATION TONE

Allows enabling/disabling of the door lock confirmation tone on the speaker module

1. Access programming mode, see **"ACCESSING THE PROGRAMMING MENU"**.

2. Select: **settings/system parameters/speaker parameters/advanced options/lock on SE/confirmation tone.**

3. Choose between:

- YES**
- NO**

4. Confirm.

C) STANDBY LOCK REL.

Allows enabling/disabling of the standby lock release on the speaker module

1. Access programming mode, see **"ACCESSING THE PROGRAMMING MENU"**.

2. Select: **settings/system parameters/speaker parameters/advanced options/lock on SE/standby lock rel.**

3. Choose between:

- YES (default)**
- NO**

4. Confirm.

D) VIEW

Allows viewing of the door lock parameters on the SE output of the speaker module

1. Access programming mode, see **"ACCESSING THE PROGRAMMING MENU"**.

2. Select: **settings/system parameters/speaker parameters/advanced options/lock on SE/view.**

» Reproduces the parameter values: type, confirmation tone, standby lock release.

TYPE	AC PLUS
CONFIRMATION TONE	<input checked="" type="checkbox"/>
STANDBY LOCK REL.	<input type="checkbox"/>

2.2.1.5.2 RELAY CONTACT

A) ACTUATOR FUNCTION

Allows enabling/disabling of the actuator function on the relay contact

1. Access programming mode, see **"ACCESSING THE PROGRAMMING MENU"**.

2. Select: **settings/system parameters/speaker parameters/advanced options/relay contact/actuator function.**

3. Choose between:

- YES**
- NO**

4. Confirm.

B) IN PARALLEL TO SE

Allows enabling/disabling of the relay contact in parallel to the speaker module SE output

1. Access programming mode, see **"ACCESSING THE PROGRAMMING MENU"**.

2. Select: **settings/system parameters/speaker parameters/advanced options/relay contact/in parallel to SE**

3. Choose between:

- YES**
- NO**

4. Confirm.

C) VIEW

Allows viewing of the relay contact parameters

1. Access programming mode, see "**ACCESSING THE PROGRAMMING MENU**".
 2. Select: **settings/system parameters/speaker parameters/advanced options/relay contact/view**.
- » Reproduces the relay contact parameters.

ACTUATOR FUNCTION	<input type="checkbox"/>
ACTIVATION TIME	03
IN PARALLEL TO SE	<input checked="" type="checkbox"/>

2.2.1.5.3 S SERIAL

A) ACTUATOR FUNCTION

Allows enabling/disabling of the actuator function on the S serial line

1. Access programming mode, see "**ACCESSING THE PROGRAMMING MENU**".
2. Select: **settings/system parameters/speaker parameters/advanced options/S serial/actuator function**.
3. Choose between:
YES
NO
4. Confirm

2.2.1.5.4 VOICE MESSAGES

Allows enabling/disabling of voice and visual messages on the speaker module

1. Access programming mode, see "**ACCESSING THE PROGRAMMING MENU**".
2. Select: **settings/system parameters/speaker parameters/advanced options/voice messages**.
3. Select a language to enable voice and visual messages on the speaker module, or select OFF to disable voice and visual messages on the speaker module.

SELECT LANGUAGE	<input type="text"/>
*OFF	
ITALIANO	
FRANCAIS	
OK	OK
SCROLL	ESC

4. Confirm.

2.2.1.5.5 CALL

A) TRIPLE CALL

Allows enabling/disabling of the triple call function

1. Access programming mode, see .
2. Select: **settings/system parameters/speaker parameters/advanced options/call/triple call**.
3. Choose between:
YES
NO (default)
4. Confirm.

B) CONFIRMATION TONE

Allows enabling/disabling of the the call confirmation tone

1. Access programming mode, see "**ACCESSING THE PROGRAMMING MENU**".
2. Select: **settings/system parameters/speaker parameters/advanced options/call/confirmation tone**.
3. Choose between:
YES (default)
NO
4. Confirm.

C) CODES BOOSTER

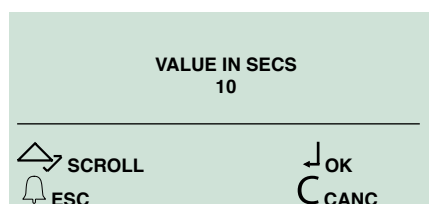
Allows enabling/disabling of the call codes booster

1. Access programming mode, see "[ACCESSING THE PROGRAMMING MENU](#)".
2. Select: **settings/system parameters/speaker parameters/advanced options/call/codes booster.**
3. Choose between:
 - YES**
 - NO (default)**
4. Confirm.

D) ANSWER WAIT TIME

Allows setting of the call answer wait time

1. Access programming mode, see "[ACCESSING THE PROGRAMMING MENU](#)".
2. Select: **settings/system parameters/speaker parameters/advanced options/call/answer wait time.**
3. Enter the value in seconds.

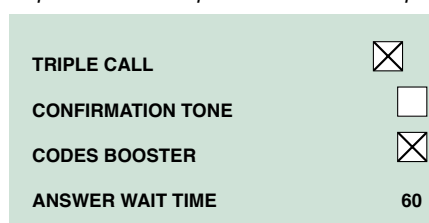


4. Confirm.

E) VIEW

Allows viewing of the speaker module call parameters

1. Access programming mode, see "[ACCESSING THE PROGRAMMING MENU](#)".
 2. Select: **settings/system parameters/speaker parameters/advanced options/call/view.**
- » *Reproduces the speaker module call parameters*



2.2.1.5.6 SELF IGNITION

Allows enabling/disabling of self-ignition

1. Access programming mode, see "[ACCESSING THE PROGRAMMING MENU](#)".
2. Select: **settings/system parameters/speaker parameters/advanced options/call/self ignition**
3. Choose between:
 - YES (default)**
 - NO**
4. Confirm.

2.2.1.5.7 DEFAULT SETTINGS

Used to restore the default settings:

*De-misting heating element = disabled
 Audio-visual messages = disabled
 Door lock command on SE in AC
 Door lock time = 2 sec + tone disabled
 C.NC.NO relay in parallel with SE
 Door lock-release always enabled
 Actuator function on S serial line = disabled
 Answer wait time = 60 sec
 Conversation time = 90 sec
 Self-ignition = enabled
 Confirmation tone on user call = enabled
 Reset wait time = 10 sec
 Send call = single
 Control of internal units connected to speaker module = up to 70
 System mode = Simplebus*

1. Access programming mode, see "[ACCESSING THE PROGRAMMING MENU](#)".
2. Select: **settings/system parameters/speaker parameters/advanced options/default settings.**
3. Choose between:
 - YES**
 - NO**
4. Confirm.

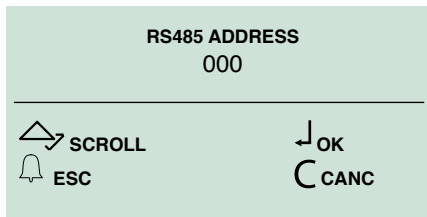
2.2.2 RS485 ADDRESS

2.2.2.1 RS485 Address



For data downloading via RS485, please refer to the wiring diagram "Connection to a computer via Art. MOXA TCC-80 20022618". For connection to module SK9020, please refer to the wiring diagram "Connection to a computer via Art. MOXA TCC-80 20022618".

1. Access programming mode, see ["ACCESSING THE PROGRAMMING MENU"](#).
2. Select: **settings/system parameters/RS485 address/RS485 address.**
3. Enter the RS485 address (max. 3 digits).

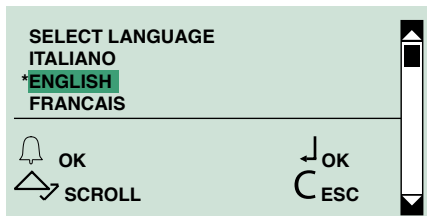


4. Confirm.

2.3. SELECT LANGUAGE

This menu can be used to set the main language.

1. Access programming mode, see ["ACCESSING THE PROGRAMMING MENU"](#).
2. Select: **settings/select language.**

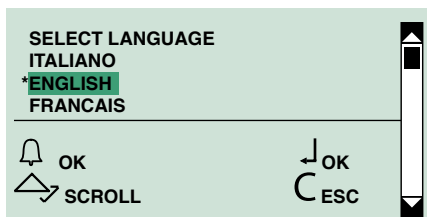


3. Select the desired language.
4. Confirm.

2.4. SECOND LANGUAGE

Allows the alternate switching of name directory standby messages from the main language to the second language.

1. Access programming mode, see ["ACCESSING THE PROGRAMMING MENU"](#).
2. Select: **settings/second language.**
3. Select the desired second language and confirm.



DEFAULT = Second language disabled.

To disable the second language:

1. Access programming mode, see ["ACCESSING THE PROGRAMMING MENU"](#).
2. Select: **settings/second language.**
3. Select DEFAULT and confirm.

or:

- ▶ Re-set the main language (see ["2.3. SELECT LANGUAGE"](#)).



IMPORTANT: *If entered, the initial welcome message (see section ["2.8. WELCOME MESSAGE"](#)) will not be switched to the second language. The second language must be set after the main language has been selected.*

2.5. CALL MANAGEMENT

Allows setting of the system type (Simplebus or Simplebus Top) and call mode (Standard, indirect code, Immotec or Immotec indirect).



CAUTION: set the system type (Simplebus or Simplebus Top) and only afterwards the call mode (Standard, Indirect code, Immotec standard or Immotec indirect)

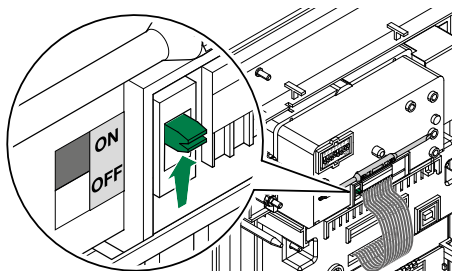


To change the system type and call mode it is necessary to erase the entire directory, see [“1.1.4 CLEAR ALL NAMES”](#)

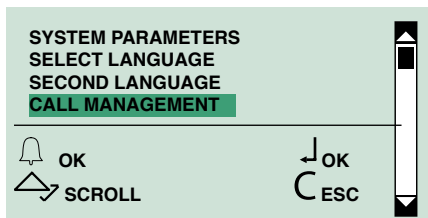
SIMPLEBUS (default) for systems without switching devices Art. 1424 in Top 1, 2, 3 mode which define the system zones.

SIMPLEBUS TOP for systems with switching devices Art. 1424 in Top 1, 2, 3 mode which define the system zones.

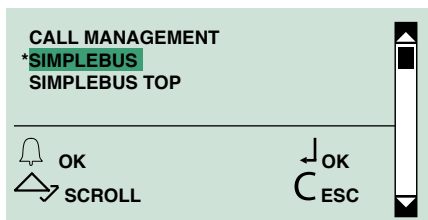
1. Set the speaker unit selector to ON, see Fig.



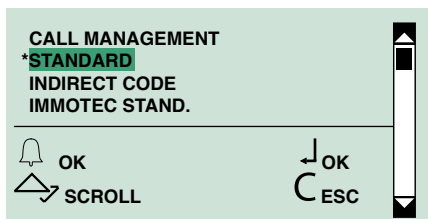
2. Connect the terminal block.
3. Access programming mode, see [“ACCESSING THE PROGRAMMING MENU”](#).
4. Select settings/call management.



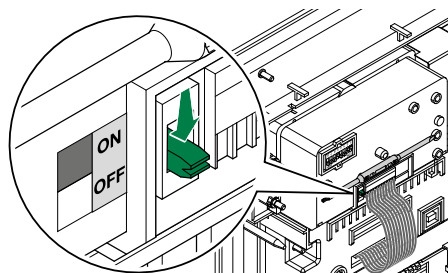
5. Select the system type and confirm.



6. Select the call mode and confirm.



7. Set the speaker module selector to OFF.



STANDARD - SIMPLEBUS (default)

In this mode, the user is identified by a name field and a code field no longer than 3 digits (between 1 and 240).

Example:
User name= Mario Rossi
Code= 2

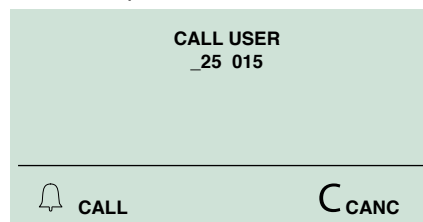
STANDARD - SIMPLEBUS TOP

In this mode, the user is identified by the name field (optional) and a code field consisting of two parts: zone field with no more than 3 digits (between 1 and 500); user field which must have 3 digits (between 1 and 240).

Example:
User name= Mario Rossi
Code= 25 015

The call can be made in the following ways:

- ✓ During normal operation
 1. Enter the user code (e.g. 25 015).
 2. Press to make the call or to cancel and exit.



- or:
1. Scroll through the directory using .
 2. Press to make the call or to exit.

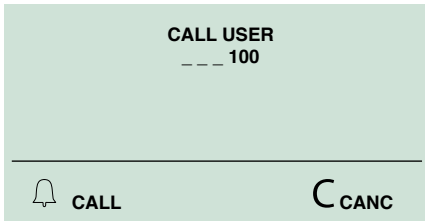
INDIRECT CODE - SIMPLEBUS or SIMPLEBUS TOP

In this mode the user is identified by a name field (optional), a code field (different for Simplebus and Simplebus Top) and an indirect code with no more than 6 characters.

Example:
User name= Mario Rossi
Code= 2 (for Simplebus) or 25 015 (for Simplebus top)
Indirect code= 100

The call can be made in the following ways:

- ✓ During normal operation
 1. Enter the indirect code (e.g. 100).
 2. Press to make the call or to cancel and exit.



or:

1. Scroll through the directory using \wedge \vee .
2. Press \mathcal{L} to make the call or \mathcal{C} to exit.

2.6. ACCESS CONTROL

The entrance panel can operate in two modes:

- **“access control” disabled:** in this mode, every name can be assigned a call code, which is saved in the directory. The entry passwords must be entered separately and are not assigned to any name.
- **“access control” enabled:** in this mode, a call code, an indirect code (only in case of indirect call), a password and an RFID key can be saved for every name listed in the directory. The option of assigning a password or key to a name allows access identification.



When access control is enabled, the following cannot be used:

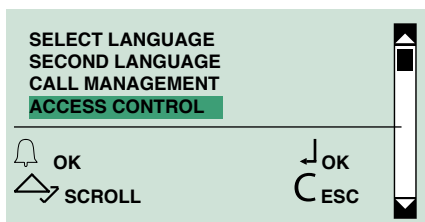
- *Immotec call mode*
- *data loading from 1249B (R.I. 003 - SW rev. 2.3 or higher)*



To switch from “access control” disabled to “access control” enabled, all saved passwords must be deleted

To switch from “access control” enabled to “access control” disabled, all saved passwords and keys must be deleted.

1. Access programming mode, see [”ACCESSING THE PROGRAMMING MENU.](#)
2. Select **settings/access control**



3. Select:

- YES**
- NO (default)**

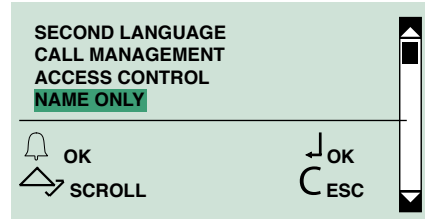
4. Confirm

2.7. NAME ONLY

Allows only the name to be displayed, without the user code, when scrolling through the directory and during a call from a user.

This function is **disabled** by default.

1. Access programming mode, see [”ACCESSING THE PROGRAMMING MENU.](#)
2. Select **settings/name only.**



3. Select:

- YES**
- NO (default)**

4. Confirm.

2.8. WELCOME MESSAGE

This function (not enabled by default) can be used to enter a welcome message (MAX. 40 characters over 4 lines, in block capitals).

The welcome message alternates with the normal information screens every 4 seconds.

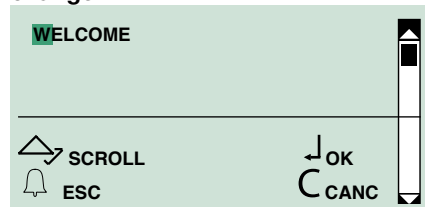


N.B.: the message cannot be switched to the second language when the “SECOND LANGUAGE” function is on (see section [”2.4. SECOND LANGUAGE”](#)).

2.8.1 CHANGE

It is possible to enter the welcome message using software Art. 1249B.

1. Access programming mode, see [”ACCESSING THE PROGRAMMING MENU.](#)
2. Select menu options: **settings/welcome message/change**



3. Enter the welcome message.

or:

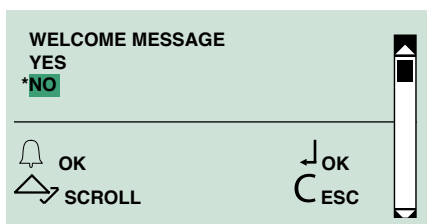
Delete the existing message and enter a new message.

4. Confirm.

2.8.2 ENABLE

The “initial message” function is disabled by default. If activated, the welcome message will appear and remain on the display after a 30-second period of inactivity.

1. Access programming mode, see [”ACCESSING THE PROGRAMMING MENU.](#)
2. Select: **settings /welcome message/enable**



3. Confirm to enable the message.

2.8.3 STATIC MESSAGE

The “initial message” function is disabled by default. If activated, the welcome message will appear and remain on the display after a 30-second period of inactivity.

1. Access programming mode, see [”ACCESSING THE PROGRAMMING MENU.](#)
2. Select: **settings/welcome message/static message**

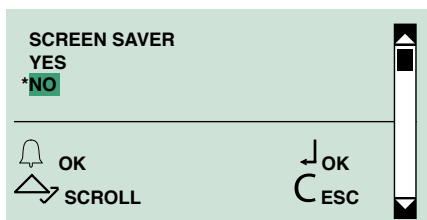


3. Select:
 - YES**
 - NO (default)**
4. Confirm

2.9 SCREENSAVER

If this function is enabled (it is disabled by default), the screensaver will appear after a 30-second period of inactivity.

1. Access programming mode, see [”ACCESSING THE PROGRAMMING MENU.](#)
2. Select: **settings/screen saver.**

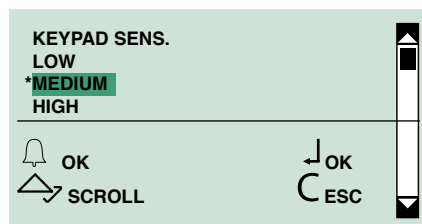


3. Select:
 - YES** to enable the function.
 - NO** to disable the function.
4. Confirm and/or press **(C)** to exit.

2.10 KEYPAD SENSITIVITY

This parameter can be used to set how sensitive the keypad is to being touched.

1. Access programming mode, see [”ACCESSING THE PROGRAMMING MENU.](#)
2. Select: **settings/keypad sens**



3. Choose between:
 - low**
 - medium (default)**
 - high**
4. Confirm.

2.11 KEYPAD TONE

This function can be used to enable/disable keypad tones.

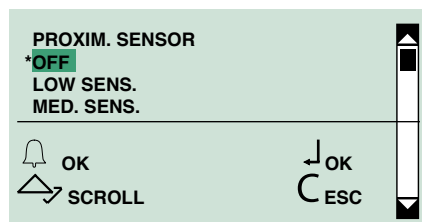
1. Access programming mode, see [”ACCESSING THE PROGRAMMING MENU.](#)
2. Select: **settings/keypad tone.**
3. Choose between:
 - YES** to enable the function (default).
 - NO** to disable the function.
4. Confirm.

2.12 PROXIMITY SENSOR

Lighting for entrance panel is provided by the “LED sun shade” accessory Art. 3459. The “proximity sensor” function encourages energy saving by activating the lighting only when the user approaches the entrance panel.

The sensor can be set to “off”, or one of three sensitivity levels which detect the user at different distances (low sensitivity > user nearby, high sensitivity > user further away).

1. Access programming mode, see [”ACCESSING THE PROGRAMMING MENU.](#)
2. Select: **settings/proximity sensor.**



3. Choose between:
 - off (default)**
 - low**
 - medium**
 - high**



When the speaker unit camera is running (during a call or during self-ignition), the LED sun shade (Art. 3459) lighting is disabled, to prevent it from interfering with the recording

2.13 BRIGHTNESS

Lighting for entrance panel is provided by the “LED sun shade” accessory Art. 3459

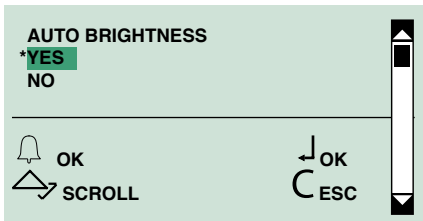
The LED sun shade consists of a courtesy LED side light (always on) and several intensity-adjustable LEDs.

LED brightness can be controlled automatically or manually:

- **Auto brightness enabled** in this mode a sensor detects the light level in the room and the device provides a suitable amount of light. The light switches off when the device is in standby.
- **Auto brightness disabled** in this mode the light intensity must be set manually (from 0 to 100%) for the enabled status and the standby status.

1. Access programming mode, see [”ACCESSING THE PROGRAMMING MENU.](#)

2. Select: **settings/brightness**



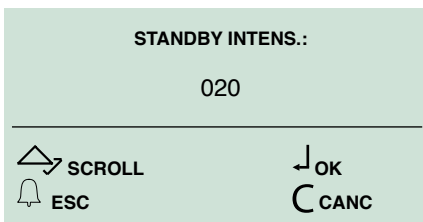
3a. Select YES to enable auto brightness

Or

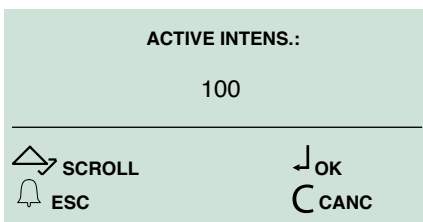
3b. Select NO (default) to enable manual brightness



When the speaker unit camera is running (during a call or during self-ignition), the LED sun shade (Art. 3459) lighting is disabled, to prevent it from interfering with the recording



4b. Adjust the light intensity (default 20%) for “standby” status using \wedge \vee and confirm.



5b. Adjust the light intensity (default 100%) for “enabled” status using \wedge \vee and confirm.

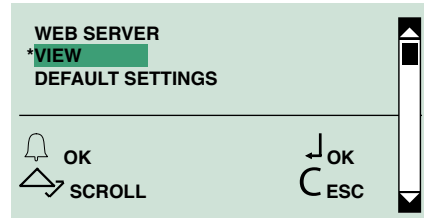
2.14 WEB SERVER

From this section you can view the network settings of the external unit and restore the default configuration.

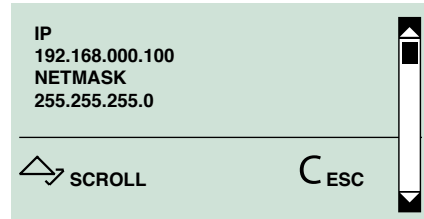
2.14.1 VIEW

1. Access programming mode, see [”ACCESSING THE PROGRAMMING MENU.](#)

2. Select: **settings/web server/view**



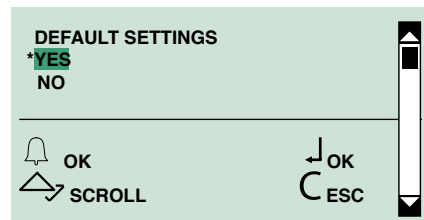
» The device configurations will be shown in the video.



2.14.2 DEFAULT SETTINGS

1. Access programming mode, see [”ACCESSING THE PROGRAMMING MENU.](#)

2. Select: **settings/web server/restore default**



3a. Select YES to confirm the operation to restore the default configuration.

Or:

3b. Select NO (default) to cancel the operation.

2.15 DEFAULT SETTINGS

This function is used to restore the default settings:

Language = Italiano
 Second language = disabled
 Type of system = Simplebus
 Call mode = standard
 Access control= disabled
 Welcome message = disabled
 Screen saver = disabled
 Type of download = disabled
 System parameters/RS485 address = 0
 Keypad sensitivity = medium
 Keypad tone = disabled
 Proximity sensor = off
 Auto brightness = NO
 standby intensity = 20
 enabled intensity = 100

1. Access programming mode, see [”ACCESSING THE PROGRAMMING MENU.](#)

2. Select: **settings/default settings**.
3. Choose between:
 - YES
 - NO
4. Confirm.



This procedure resets the directory database and the password and key database

3. Info

From this menu it is possible to view:

- the number of names listed in the directory
- the number of passwords entered
- the number of keys entered
- the RS485 address
- the software version.

1. Access programming mode, see ["ACCESSING THE PROGRAMMING MENU"](#)
2. Select: INFO
3. Scroll using
4. Press to exit

External data management

SOFTWARE 1249B

(R.I. 003 - SW rev. 2.3 or higher)

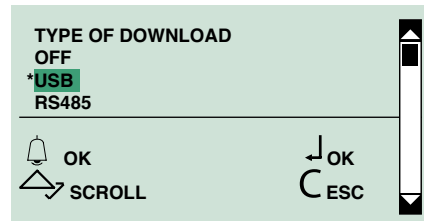
INSTALLING THE USB DRIVER FOR CONNECTION TO A PC



This software can only be used while access control is disabled (see ["2.6. ACCESS CONTROL"](#))

Make sure that the option to install unsigned drivers (drivers that have not passed Windows Logo testing) is enabled

1. Connect the cable attached to Art. 1249B to the USB connector on the rear of the directory module.
2. Access programming mode, see ["ACCESSING THE PROGRAMMING MENU"](#)
3. Select: **Settings/Type of download/USB**



4. The messages "Found new hardware Art. 3451" and "New hardware installation wizard" appear on the PC. Follow the installation wizard instructions through to completion.



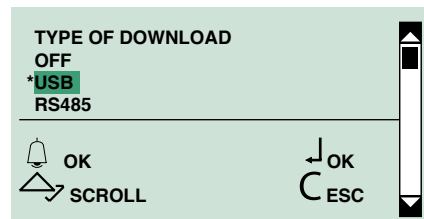
CAUTION: select the Drivers folder located in the Art. 1249B installation folder

USING THE DIRECTORY VIA SOFTWARE ART. 1249B



CAUTION: connection to the PC is via USB; make sure that the drivers have been installed, see section ["Installing the USB driver for connection to a PC"](#).

1. Connect the cable attached to Art. 1249B to the USB connector on the rear of the directory module.
2. Access programming mode, see ["ACCESSING THE PROGRAMMING MENU"](#)
3. Select: **Settings / Type of download / USB**



4. Run software Art. 1249B.
5. Run the download procedure and wait until it is complete.



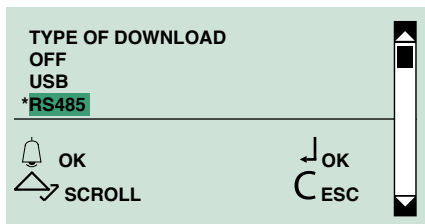
The system type and call mode selected must correspond with those set on module, see section “2.5. CALL MANAGEMENT”. Make sure in “Parameters configuration” on Art. 1249B that the correct communication port is selected. If the power supply is cut off while the data downloaded via USB is being saved, the option of resuming the save process will be displayed on the LCD next time the unit is started up

MULTIDOWNLOAD

It is possible to use an RS485 network to connect multiple entrance panels to the same PC with software Art. 1249B installed.

In this case each entrance panel must have a different ID CODE (RS485 address), see section “2.2.2 RS485 ADDRESS”

1. Connect the RS485 serial cables to terminals 485D+/485D- on Art. 3451 (see “[Connection to a computer via Art. MOXA TCC-80 20022618](#)”).
2. Access programming mode, see “[ACCESSING THE PROGRAMMING MENU](#)”.
3. Select: **Settings/Type of download/RS485**



4. Run software Art. 1249B.
5. Run the download procedure and wait until it is complete



The system type and call mode selected must correspond with those set on the entrance panel (see section “2.5. CALL MANAGEMENT”). Make sure in “Parameters configuration” on Art. 1249B that the correct communication port is selected.

WEB SERVER

Webserver access allows management (also remotely) of:

The parameters

- the name of the external unit
- the call mode
- activation/deactivation of “access control” mode

Data management

- the insertion, editing, deletion, import and export of directory data (names, codes, passwords and keys)
- enabling and personalization of the welcome message
- personalization of the messages:
 - code insertion
 - names scrolling
 - names search

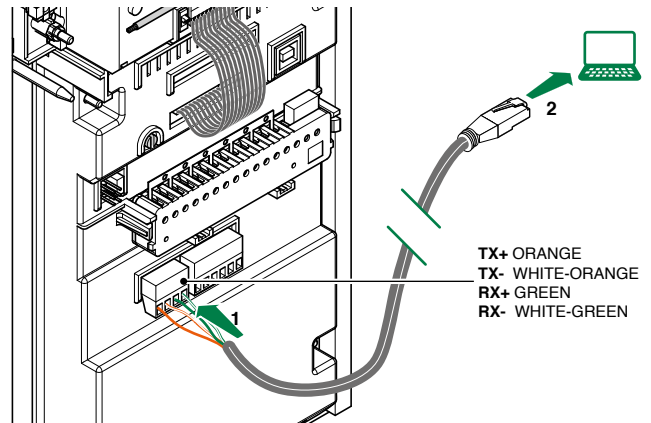
Product updating:

- firmware updating
- web page updating

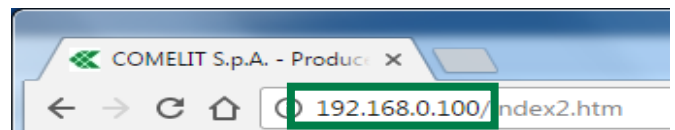


It does not allow you to change the system type (SB or SBTOP).

CONNECTION TO THE WEB SERVER VIA ETHERNET



1. Connect the external unit to your PC using a crimped ethernet cable, as shown in the figure.
2. Assign to your PC a network address that is compatible with the external unit (default configuration of the external unit: IP address 192.168.0.100, Netmask 255.255.255.0, Gateway 192.168.0.1)
3. Open a browser, type the IP address of the webserver in the address bar (default: 192.168.0.100) and press ENTER.



LOCAL CONNECTION TO THE WEB SERVER

- ✓ **If the default address of the device (192.168.0.100) belongs to the same network as the router (e.g.: 192.168.0.1) and if the default address of the device (192.168.0.100) is NOT already used by another device in the network.**
 - ▶ connect the entrance panel as shown in the diagram "[Connection to a computer via Art. MOXA TCC-80 20022618](#)", to connect the device to the local network.
- ✓ **If the default address of the device (192.168.0.100) does NOT belong to the same network as the router (e.g.: 192.168.1.1)**
- ✓ **OR if the default address of the device (192.168.0.100) is already used by another device in the network.**
 1. Connect the external unit to your PC as described in chapter "[CONNECTION TO THE WEB SERVER VIA ETHERNET](#)"
 2. Assign to the entrance panel an address that is compatible with the local network and NOT used by any devices already present in the network (e.g.: **192.168.1.130**, Netmask 255.255.255.0, Gateway 192.168.1.1)
 3. Connect the entrance panel as shown in the diagram "[Connection to a computer via Art. MOXA TCC-80 20022618](#)", to connect the device to the local network.

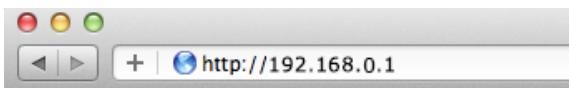
REMOTE CONNECTION TO THE WEB SERVER

- ✓ With the PC connected to the system router
 1. **Open port 80 on the system router for the IP address of the external unit (default: 192.168.0,100)**

PORT FORWARDING SETTING FOR REMOTE CONNECTION

Port forwarding is the operation that allows the transfer of data from one device to another via a specific communication port. This procedure enables an external user to access a device on a local network.

- ✓ With the PC still connected to the system router
 - A. Access the browser and enter the IP address of the router in the navigation bar, for example: 192.168.0.1



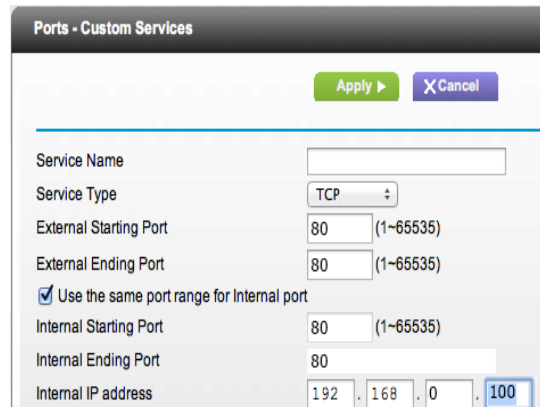
- B. Log in by entering the username and password (these can be found in the router user manual).



The port configuration method may differ according to the brand and type of router used

- C. Look for the sections "Port Opening" or "Apps and games" or "Port Forwarding" (if not present in the main menu, look for them in Advanced settings) and add the ports you wish to configure.
- D. Fill in the configuration panel (see example in the figure below):
 - Enter a name.
 - Select the desired protocol (TCP).

- For the external port, enter the desired value (80); enter the same value in the Start and End fields to open a single port.
- For the internal port, enter the desired value (80); enter the same value in the Start and End fields to open a single port.
- Enter the IP address of the entrance panel, for example (default= **192.168.0.100**).
- Confirm.



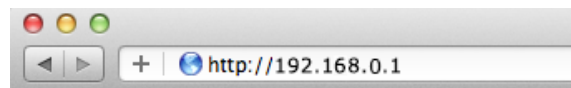
2. Assign a **public static IP address** to your router, or create a **DNS address** to allow remote access to the system

ASSIGN A PUBLIC STATIC IP ADDRESS TO YOUR ROUTER

- ✓ You will need to purchase a public static address from an Internet Service Provider.

ASSIGN A DYNAMIC DNS ADDRESS TO YOUR ROUTER

- ✓ The router must have a DNS service.
- ✓ You will need to register a hostname on a **DNS service provider**.
- A. Access the browser and enter the IP address of the router in the navigation bar, for example: 192.168.0.1



- B. Log in by entering the username and password (these can be found in the router user manual).



The port configuration method may differ according to the brand and type of router used

- C. Look for the section "**dynamic DNS**" (if not present in the main menu, look for it in the advanced settings)
 - D. Activate the "dynamic DNS" service
 - E. Select "Services Provider" and enter the required parameters host name, user name and password and confirm.
3. **Open a browser, type the public IP address (or DNS address) of the webserver in the address bar and press enter.**

USE OF THE WEB SERVER

✓ One the connection with the web server has been established (via ethernet, local or remote connection)

1. Click on “Configuration”, “Data management”, “Settings”, “Update” to access the relative sections.

2. Enter the access data,

by default:

Username: **admin**

Password: **admin**

CONFIGURATION

From the “Configuration” page you can set: the name of the external unit, the call type and the access control mode.

1. NAME	Enter the name you wish to assign to the external unit.
2. SYSTEM	Non-editable field for display of the system type (Simplebus/Simplebus Top) configured on the external unit.
3. CALL TYPE	Select the desired call mode from the pull-down menu (choose from: <i>Standard, Indirect code, Immotec, Immotec with indirect code</i>) as described in the chapter “ 2.5. CALL MANAGEMENT ”.
4. ACCESS CONTROL	Select/Deselect to Enable/Disable the access control function (see the chapter “ 2.6. ACCESS CONTROL ”).
5. SAVE PARAMETERS	Press the button to save the configuration.

DATA MANAGEMENT

The “Data management” page gives quick access to management of directory data and warning messages.

1. NAMES	<p>Quick access buttons for management of names, codes and passwords in the directory.</p> <p>! <i>If Access Control is deactivated, names and passwords are managed separately and keys cannot be used.</i></p> <p>Names: 0/4000 Management Add Reset Import Export</p> <p>Passwords: 0/4000 Management Add Reset Import Export</p> <p>Messages: Management Import Export</p>
2. MESSAGES	Quick access buttons for management of the warning messages of the external unit.

NAME MANAGEMENT

[Homepage](#)
[Configuration](#)
[Data Management](#)
[Name](#)
[Messages](#)
[Setup](#)
[Update](#)

Names

Display 10 records per page Search

Name	SB code	Indirect code	Password	Key
NAME 1	1	000100	123456	FFFFFFFF - Yellow
NAME2	2	000102	234567	AAAAAAAA - Blue

Showing 1 to 2 of 2 records ◀ Previous Next ▶

One element commands

Edit
Delete
Add

Global commands

Delete passwords
Delete keys
Reset
Import
Export

From the page "Data management / Names you can edit, delete, add, import and export names, passwords and access keys

1. TABLE	<p>Table showing entered data.</p> <p> <i>If Access Control is deactivated, names and passwords are managed separately.</i> <i>The "Key" column is only present when Access Control is activated.</i> <i>The "Indirect code" column is only present in "indirect code" call mode.</i></p>
2. ONE ELEMENT COMMANDS	Commands applied only to a single element in the list.
EDIT	Select the line that you wish to edit and press the "Edit" button to access the names editing page.
DELETE	Select the line that you wish to delete and press the "Delete" button to delete the selected element.
ADD	Press "Add" if you wish to add a new element to the list.
3. GLOBAL COMMANDS	Commands applied to ALL the elements saved in the directory
DELETE PASSWORDS	Press the button to delete all the passwords saved in the directory.
DELETE KEYS	Press the button to delete all the keys saved in the directory.
RESET	Press the button to delete all the elements in the directory.
IMPORT	Press the button to import the previously exported data.
EXPORT	Press the button to export the directory in a .csv file

Password Management (only with Access Control deactivated)

From the "Password Management" page you can edit, delete, add, import and export passwords.

- ▶ Proceed as described for "Name Management".

ADD NAME

- ▶ From the "Data Management" page or from the "Data management/Names" page, press "Add" to open the "Add name" page.

Add name

Homepage
Configuration
Data Management
Names
Messages
Setup
Update

Name

Call codes

SB code

Indirect code

Add a password

Password

Add a key

Key Color not defined ▼

Back to list Save

From the "Add name" page you can save names, codes, passwords and access keys.

1. NAME	Enter the name you wish to assign to the element in the directory.
2. CALL CODES	Select/deselect to enable/disable call codes.
SB CODE	Enter the Simplebus code.
INDIRECT CODE	Enter the indirect code. ⚠ Available only in "indirect code" call mode.
3. ADD A PASSWORD	Select/deselect to associate/disassociate a password with the name. ⚠ If Access Control is deactivated, passwords are managed separately. <hr/> Add password Password <input type="password"/> Back to list Save
PASSWORD	Enter the password you wish to associate with the name.
4. ADD A KEY	Select/deselect to associate/disassociate a key with the name. ⚠ If Access Control is deactivated, keys cannot be used.
KEY	1. Enter the identification code (printed on the key) of the key that you wish to associate with the name. 2. Select from the pull-down menu the colour you wish to associate with the key.
5. SAVE	Press the button to save the configuration. After saving, press "New" if you wish to save a new element.
6. BACK TO LIST	Press the button to return to the Names Management page.

Add Password (only with Access Control deactivated)

From the "Add Password" page you can save passwords.

- ▶ Proceed as described for "Add Name".

EDIT NAME

- From the Data management/Names page, select the record that you wish to edit [1.] and press the "Edit" button [2.] to access the "Edit name" page.

From the "Edit name" page you can save names, codes, passwords and access keys.

1. NAME EDITING FIELDS	Edit the fields you wish to change.
2. NEXT	Press the button to edit the next record in the directory.
3. SAVE	Press the button to save the configuration.
4. BACK TO LIST	Press the button to return to the Names Management page.
5. PREVIOUS	Press the button to edit the previous record in the directory.

Edit Password (only with Access Control deactivated)

From the "Edit Password" page you can edit passwords.

- Proceed as described for "Edit Name".


- Homepage
- Configuration
- Data Management
- Names
- Messages
- Setup
- Update

Messages

Welcome


Ability to enable a welcome message.
The text will be placed on 4 lines, left aligned, with the ability to make it static

Enable

 **Code insertion**


Ability to customize the text placed under the icon.
The text will be placed on 2 lines, center aligned, with the option to choose the font size.

Customize

 **Names scrolling**

Ability to customize the text placed to the right of the icon.
This screen will appear only if there are names in names directory.
The text will be placed on 2 lines, center aligned, with the option to choose the font size.

Customize

 **Names search**

Ability to customize the text placed to the right of the icon.
This screen will appear only if there are names in names directory.
The text will be placed on 2 lines, center aligned, with the option to choose the font size.

Customize

Export Import Save parameters

From the "Messages" page you can:

- enable and customize the welcome message
- customize the messages: code insertion, names scrolling, names search

1. WELCOME	Select "Enable" to enable display of the Welcome message. Follow the on-screen instructions to customize the message.
2. CODE INSERTION	Select "Enable" and follow the on-screen instructions to customize the message.
NAMES SCROLLING	
NAMES SEARCH	
3. SAVE PARAMETERS	Press the button to save the configuration.
4. IMPORT	Press the button to import the previously exported messages.
5. EXPORT	Press the button to export the messages in a .csv file

SETUP

- Homepage
- Configuration
- Data Management
- Setup**
- Update

Setup

Administrator access parameters

Administrator: 1.

Password: 2.

Repeat password: 3.

Save parameters 4.

Lan parameters

IP address: 5.

HTTP port: 6.

Gateway: 7.

Subnet mask: 8.

Save parameters 4.

Date and Time

Year: Month: Day: Hour: Minute: 9.

Set browser time: 10.

Save parameters 4.


From the "Setup" page you can:

- configure the parameters for administrator access to the Web server
- configure the network parameters
- set the date and time

Administrator access parameters

1. ADMINISTRATOR	Enter the username you wish to assign to the administrator
2. PASSWORD	Enter the password you wish to assign to the administrator
3. REPEAT PASSWORD	Confirm the password

Network parameters

5. IP ADDRESS	Enter the IP address you wish to assign to the external unit (default: 192.168.0,100)
6. HTTP PORT	Displays the port for remote access to the web server.  Open port 80 on the system router ONLY if you wish to access the web server remotely
7. GATEWAY	Enter the gateway IP address: (default: 192.168.0.1)
8. SUBNET MASK	Enter the subnet mask (default: 255.255.255.0)

Date and time

9. YEAR MONTH DAY HOUR MINUTE	Complete the fields to manually set the date and time.
10. SET BROWSER TIME	Select to set the browser time.

4. SAVE PARAMETERS	Press the button to save the configuration.
--------------------	---------------------------------------------

- Homepage
- Configuration
- Data Management
- Setup
- Update**

Update

In this page you can update application firmware for mainboard and the webpages.
Please select both files and must be relative to the same version, otherwise after update procedure return an error.

Actual version: /stable/rev1.1.x@5551


Firmware (*.cfbl) Nessun file selezionato 1.

Webpages (*.bin) Nessun file selezionato 2.

3.

From the "Update" page you can:

- view the version of the Firmware and update it,
- update the web pages

1. FIRMWARE	Press "Select file" to upload the respective update files
2. WEB PAGES	Press "Select file" to upload the respective update files
3. UPLOAD	<p>Press the button to start the update.</p> <p>» <i>On completion of the upload, the device will restart.</i></p> <p> Firmware and web pages must both be for the same version, otherwise an error message will be generated.</p>

CERTIFIED MANAGEMENT SYSTEMS



www.comelitgroup.com

Via Don Arrigoni, 5 - 24020 Rovetta (BG) - Italy

