

VMAX[®] A1 Plus[™]

HD over Coax[™] DVRs

4-Channel	8-Channel	16-Channel
DW-VA1P4	DW-VA1P8	DW-VA1P16
DW-VA1P41T	DW-VA1P81T	DW-VA1P162T
DW-VA1P42T	DW-VA1P82T	DW-VA1P163T
DW-VA1P43T	DW-VA1P83T	DW-VA1P164T
DW-VA1P44T	DW-VA1P84T	DW-VA1P166T
DW-VA1P46T	DW-VA1P86T	DW-VA1P168T
DW-VA1P48T	DW-VA1P88T	DW-VA1P1610T
DW-VA1P410T	DW-VA1P810T	DW-VA1P1612T
		DW-VA1P1616T
		DW-VA1P1620T



Default Login Information	Username: admin	Password: no password
---------------------------	-----------------	-----------------------

WHAT'S IN THE BOX

Item	Quantity	Description
Quick start guide and download card	1 set	DC 12V adapter and power cable (*4-channel models do not come with power cable)
IR remote control (optional)	1	Rubber mounts - 4pcs
USB mouse	1	

NOTE: Download all your support materials and tools in one place.

- Go to: <http://www.digital-watchdog.com/support-download/>
- Search for your product by entering the part number in the "Search by Product" search bar. Results for applicable part numbers will populate automatically based on the part number you enter.
- Click "Search". All supported materials, including manuals, Quick Start Guides (QSG), software and firmware will appear in the results.

Attention: This document is intended to serve as a quick reference for initial setup. It is recommended that the user read the entire instruction manual for complete and proper installation and usage.

STEP 1 - CONNECTING THE DVR

- Mount and install all necessary cameras and external devices. Refer to their individual manuals for additional information.
- The DVR supports the following analog signals:
 - HD-Analog
 - HD-TVI
 - Analog signal up to 960H

The DVR supports cameras up to 5MP in resolution. Please refer to the product's data sheet and full manual for recording specifications per product.
- The DVR supports automatic signal detection. This means you do not have to perform any additional steps to assign signals to each BNC input. The DVR will detect the proper signal automatically.
- Place the DVR in its final position. See installation tips below.
- Connect all necessary cables to the DVR.
- Once all additional devices have been properly connected to the DVR, connect the DVR to an appropriate power supply. The DVR will boot up automatically.

Model	Power consumption
DW-VA1P4xT	DC12V, 1.5A
DW-VA1P8xT	DC12V, 3.3A
DW-VA1P16xT	DC12V, 5A

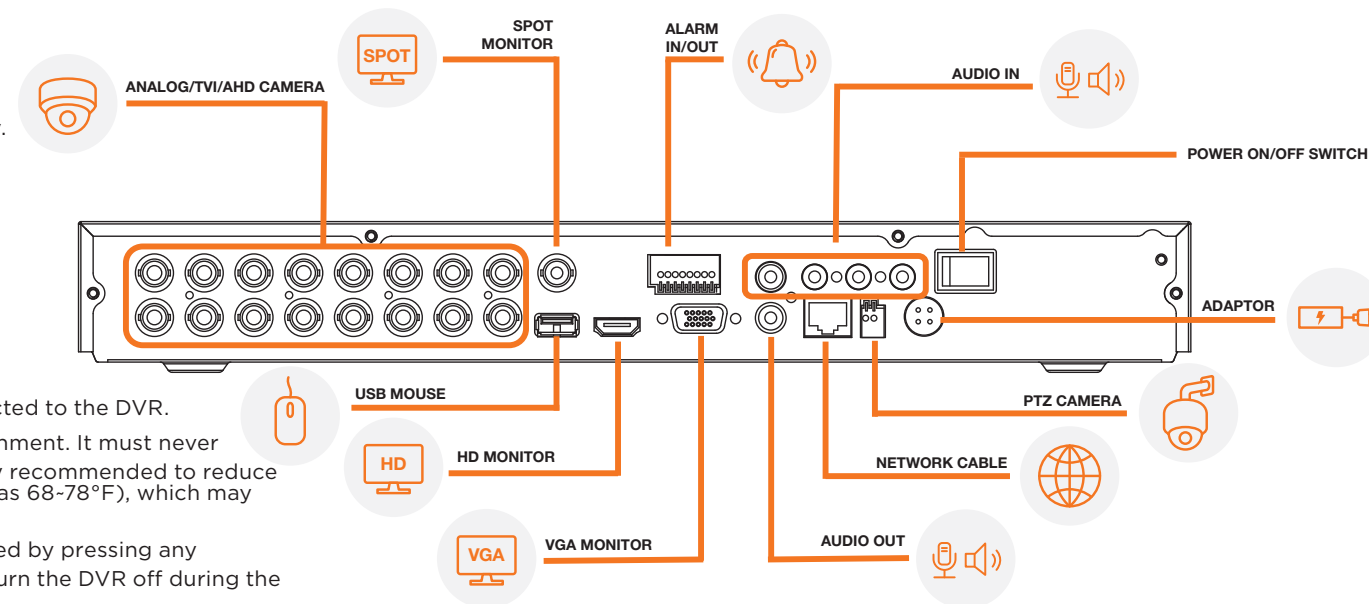
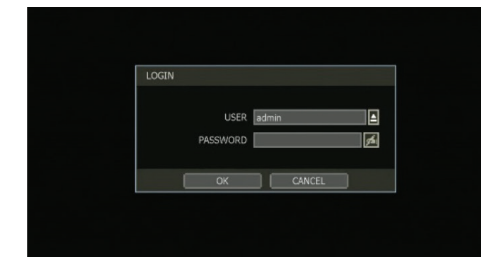
SAFETY TIPS

- Make sure the cameras and the monitors are properly connected to the DVR.
- The DVR should be placed in a dust and moisture free environment. It must never be directly exposed to sunlight. A room temperature is highly recommended to reduce the chance of overheating, (room temperature is considered as 68-78°F), which may cause the DVR to become unstable.
- During the boot up process, the DVR should not be interrupted by pressing any buttons on the mouse. Do not unplug the power adaptor or turn the DVR off during the boot up process.
- A UPS (uninterrupted power supply) is highly recommended to prevent damage to the DVR during a power outage.

NOTE: HD Monitor output and VGA output cannot be used at the same time for dual monitoring.

STEP 2 - POWERING UP THE DVR

- When the DVR boots up, it will be in protective mode. This means you will not be able to access the DVR's setup menu until you login.
- To unlock the DVR, right-click anywhere on the screen. The login screen will appear. (Default Username / Password: admin / no password)
- When the DVR boots up for the first time, you will be guided through the Startup Wizard.

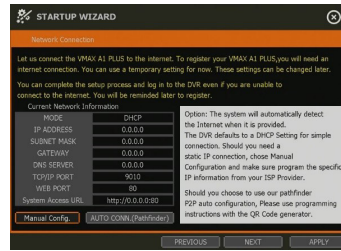


To prevent the DVR from overheating, do not operate it in an area that exceeds the maximum recommended ambient temperature of 104°F (40°C). To prevent airflow restriction, allow at least 3 inches (7.6 cm) of clearance around the ventilation openings.



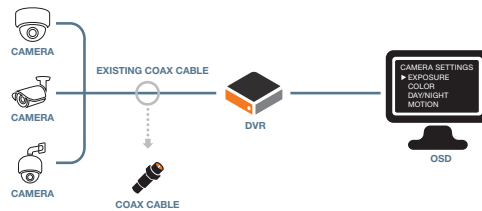
STEP 3 – STARTUP WIZARD

1. Follow the startup wizard’s instructions to setup the DVR’s basic settings, including language, date/time and network. **You may not need to change any default settings to properly set up your system.** At any time, you can skip steps, go back, or exit the wizard and setup the DVR manually.
2. Set the DVR’s network settings to match your network’s requirements. It is recommended to set the network type to “AUTO CONN.” and let the DVR auto-detect the network’s settings. Then, change the type to static. Please contact your network administrator for additional information. Press “APPLY” to save and “NEXT” to move to the next step. Adjust the DDNS settings as needed, or refer to the PathFinder™ option instead after initial setup. See STEP 6 - MOBILE APP REMOTE MONITORING.
3. If this is your first time powering up the DVR, You are encouraged to use the setup wizard. If you prefer to manually go through the DVR’s settings to your preference, you can exit the setup wizard at any time.



STEP 4 – UTC AND PTZ CAMERA CONTROL

The DVR supports complete camera control via the coaxial connection (UTC). There is no need for an additional RS485 connection between the camera and the DVR in order to control the camera. This feature must also be supported on the camera’s side.



To add a UTC or PTZ camera:

1. Right-click anywhere on the screen and go to “MENU” > “DEVICE” > “PTZ”



2. Camera type will be auto-detected and displayed under the camera tab. Protocol should match the camera type detected.
 - HD-A(C) -> legacy HD-Analog signal type camera.
 - HD-A/HD-TVI -> HD-Analog signal type camera.
 - HD-TVI-> HD-TVI signal type camera (DW default signal type).

NOTE: If you are connecting a camera via UTC protocol, baudrate and address settings will be disabled.



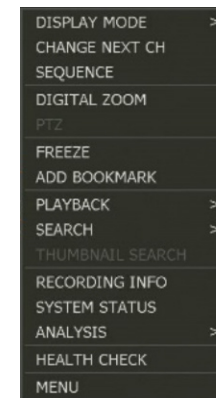
3. To control the camera’s menu and settings, press the “PROGRAM” button under the “CONTROL”. See user manual for more information.

STEP 5 – MONITOR YOUR SYSTEM

1. Navigation – use the included USB mouse to navigate around the DVR’s monitoring and Setup pages.
 - a. To access the menu bar – move the mouse’s cursor to the bottom of the display area to show the menu bar. You can also display it constantly by pressing the pin icon on the right side.



- b. To access the quick menu options, right-click anywhere on the screen. This will take you to the quick menu options, which include:
 - “DISPLAY MODE” Options
 - “DIGITAL ZOOM”, “PTZ” control and “FREEZE” image (on supported cameras)
 - “ADD BOOKMARK” video
 - Instant “PLAYBACK”, “SEARCH” and “THUMBNAIL SEARCH”
 - Recording status and analysis system monitoring
 - Access to the “HEALTH CHECK” and open the main “MENU”.

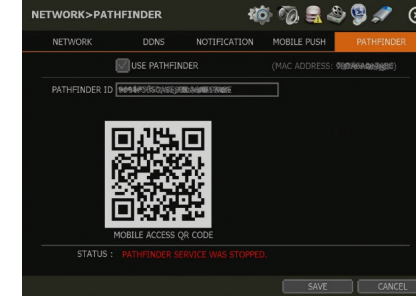


2. Help – For your convenience, the help button located at the bottom left of setup screens includes basic information and explanation of the features and settings in that page, for on-the-go information.

STEP 6 – MOBILE APP REMOTE MONITORING

You can monitor your system from DW’s Mobile Plus™ app with no need for complicated port forwarding! To enable the QR code on your DVR:

1. Right-click anywhere on the DVR’s screen and go to “MENU” > “NETWORK” > “PATHFINDER™”
2. Check the box next to ‘USE PATHFINDER’. Click Save.
3. A mobile access QR code will appear on the right side of the screen. Status at the bottom of the screen should say “PATHFINDER™ SERVICE ACTIVATED”.



To view the DVR on your mobile app:

1. Go to the Google Play Store or Apple App store and download the latest DW Mobile Plus™ app.
2. To add a new VMAX® A1 Plus™ device- Launch the DW Mobile Plus™ application on your Android® or Apple® smart-phone or tablet.
3. Go to the Site menu to register a new site with the QR code scan.
4. Press QR icon next to the Host field.
5. Move the camera angle to QR code on DVR. The camera will capture the QR code automatically once all four corners of the code are registered in the camera’s frame properly.
6. Once the camera registers the QR code from the DVR, the IP address field will show the DVR’s MAC address information.
7. Complete the new device’s registration information by adding the device name, port number, user-name and password. Select “SAVE” to complete the registration.
8. The new site will appear in your sites list.

