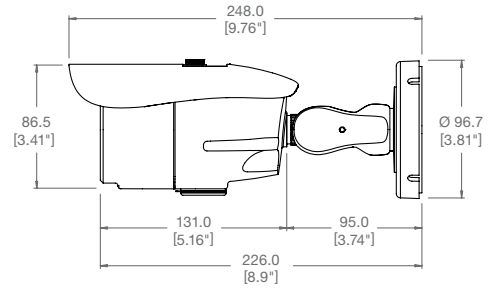




DWC-LPR550

Dimensions (unit : mm [inch])



LPR™ License Plate Recognition



Summary

The new STAR-LIGHT LPR™ License Plate Recognition (LPR) is engineered to deliver the best performance in capturing license plates in extreme light conditions. It guarantees consistent, reliable plate capture in both Day and Night with 5-50mm varifocal auto iris lens and 150ft range Smart IR™ can capture images from a range of 13 to 100 feet in moving vehicles up to 50mph. The STAR-LIGHT LPR™ camera comes in a No Fog or Condensation under any Conditions bullet housing to make sure license plates are captured clearly and visibly no matter the lighting challenge or weather condition.

Features

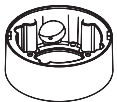
- 1/3" 960H CCD, 700TVL [B/W]
- STAR-LIGHT LPR™ License Plate Recognition Technology Captures Reflective License Plates up to 50mph with a 13~100ft Capture Range
- Reliable Performance Under Any Lighting Conditions
- External OSD and Lens Adjustment
- True Day/Night with Mechanical IR Cut Filter
- 5-50mm Varifocal Lens
- Smart IR™ with Intelligent Camera Sync. 150ft Range
- No Fog or Condensation Under Any Condition
- IP66 Certified
- Secondary BNC Output
- UTC (Up-to-Coax) Compliant

Specifications

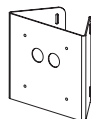
IMAGE	
Image Sensor	1/3" 960 CCD Sensor
Active Pixels	960 (H) x 478 (V), 520K
Scanning System	2 : 1 Interlace
Frequency	15.734KHz (H), 59.95Hz (V)
Synchronization	Internal / External
Horizontal Resolution	700 TV Lines [B/W]
Minimum Scene Illumination	0 Lux (F1.2 , 30IRE) at TDN [B/W]
S/N Ratio	52dB (AGC off)
Video Output	CVBS: 1.0Vp-p / 75 Ω
LENS	
Focal Length	5-50mm
Lens Type	Varifocal Lens
IR Distance	150 feet
OPERATIONAL	
Shutter Speed	1,000 Default
Backlight	OFF / ON
Mirror and Flip	Off / V. Flip / Rotate
Motion Detection	4 Motion Regions
Privacy Zones	8 Programmable Privacy Masks
Sharpness	0 – 20
Gamma	0.35 – 0.7
ENVIRONMENTAL	
Operating Temperature	-10°C ~ 50°C (14° ~ 122°F)
Operating Humidity	Less than 90% (Non-Condensing)
IP Rating	IP66 (Weather Resistant)
Other Certifications	FCC, CE, ROHS
ELECTRICAL	
Power Requirements	DC12V / AC24V
Power Consumption	DC12V: 3.6W, 300mA AC24V: 3.8W, 158mA
MECHANICAL	
Material	Aluminum
Dimensions	261 x 91 mm (8.5 x 3.58 in)
Weight	1.83 lbs

*Specifications subject to change without notice.

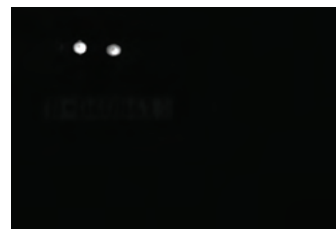
Accessories (Optional)



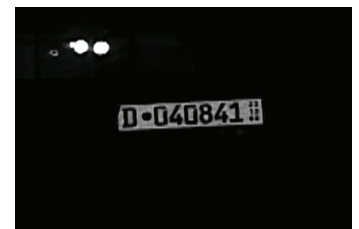
DWC-BLJUNC
Junction Box for B1, B2,
B5 & B6 Housing



DWC-PMB-BU
Pole Mount Bracket
for Bullet Cameras



Low Light Camera Capture



STAR-LIGHT LPR™ Camera Capture