

MEGAPIX MB950TIR

IP 5MP Weather Proof Bullet Camera

Quick Setup Guide



PREPARATION

The following items are included with the MB950TIR Camera

Quick Start Guide		CD (Manual & Software)	
L-Wrench		4x Mounting Screws & Wall Anchors	
2nd Video Output Adapter		DC Cable Adapter	
2x Drying Packets- Silica Gel Packet		Mounting Template	

Weather Proof Bullet Camera with Mounting Bracket

Thank you for purchasing Digital Watchdog's MEGAPIX IP Weather Proof Bullet Camera. Before installing the camera, please verify your model and read this guide carefully.

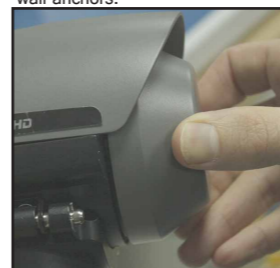
3

INSTALLATION

Mounting the QCamera



1 Use the camera's mounting template to mark and drill the mountin holes. Fix the mounting plate to the surface using the three (3) provided screws, washers, and wall anchors.



3 To connect all appropriate cables to the camera and complete the installation, unscrew the back cover of the camera. Refer to page 2 in this QSG for more information on the cabling connections available on this camera.

2 Mount the camera's arm support onto the mounting plate.

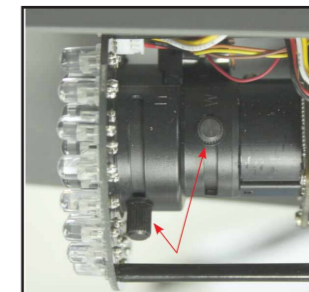


4 Remove the spindle fork connecting the camera module to the mounting bracket by pushing in the spindle. Screw the spindle fork on to the camera.

5

INSTALLATION

Prepare the Camera and Mounting Surface



9 Use the two handles at the base of the lens to adjust the focus and the zoom.



10 You may also use the 2nd Video output located near the camera's lens for easy adjustment during installation.



11 After adjusting the lens, remove drying agent pack from one of the silver packages stored inside the accessories package*. Remove the sticker from the drying agent pack and insert in the front under the lens as shown in the image*.

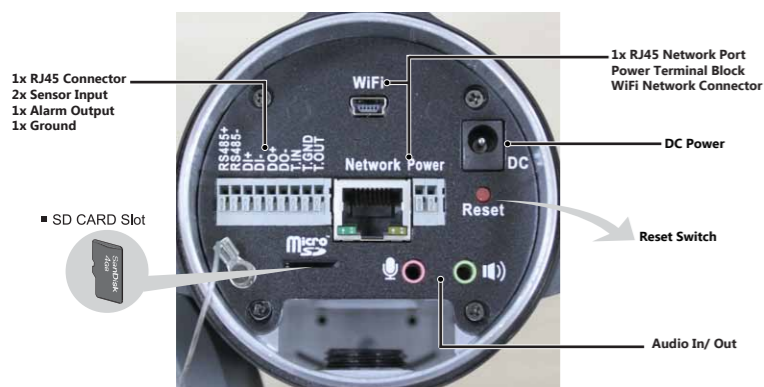


10 Screw the front cover back on to the camera. If using wide angle, shift the camera's hood back to avoid blocking the view. Loosen screws and shift back or forward as necessary.

The drying agent pack should be replaced each time the camera is opened (front or back). Be sure to complete all work before inserting drying agent pack & replacing the cover. Drying agent packs will become ineffective if exposed to open air for more than 10 minutes.

7

Additional Cabling Connections



Resetting the Camera

Pressing the reset button on the camera's control board, while the camera is on, for six (6) seconds will initialize all environmental variables to factory default. Previous setup for IP default, time, etc. will be reversed to its factory default values. The following are the default network settings:

IP Mode	DHCP
IP Address	192.168.1.2
Subnet Mask	255.255.255.0
Gateway	192.168.1.1
RTP Video Port	6002
HTTP Port	80
RTSP Port	554

Frequent use may cause a System Error



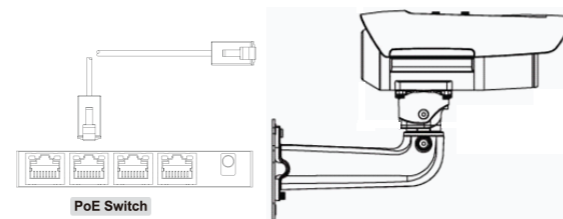
2

Network Connection

There are two options.*

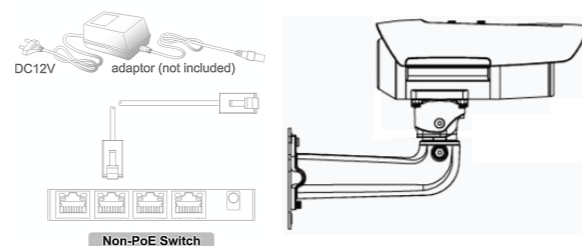
1 Using a PoE-Enabled Switch

The MEGAPIX Camera is PoE-compliant, allowing transmission of power and data via a single ethernet cable. Follow the illustrations below to connect the camera to a PoE-enabled switch using an ethernet cable.



2 Using a Non-PoE Switch

If a PoE-enabled switch is not used, use a power adaptor to connect the MEGAPIX Camera to a Non-PoE switch.



4

Mounting the Camera



5 Set the camera onto the arm by pushing the spindle and placing the fork on the spindle.



6 Tighten the screws on the other side of the spindle to lock the camera on to the mounting bracket.



8 To adjust the camera's lens, focus, and zoom, unscrew the front cover by rotating it counter clock-wise.

6

Camera Specifications

IMAGE	
Image Sensor	1/2.5" 5MP CMOS Sensor
Total Pixels	2592 (H) X 1920 (V)
Minimum Scene Illumination	0.0 Lux
LENS	
Focal Length	3.4-10mm
Lens Type	Variofocal/ DC- Iris
IR Distance	80ft Range IR
Angle of View	Horizontal: 60 (wide) - 25 (tele)
AUDIO	
Compression and Sampling Rate	G.711/ G.726/ AAC
Input / Output	Built-in Microphone, 1x Line In and 1x Line Out
NETWORK	
DW Optimized Firmware	Full Firmware Option
LAN	
Video Compression Type	H.264, MPEG4, MJPEG
Resolution	10fps @ 2560x1920 (5MP) / 10fps@2592x1920(5MP) / 20fps@2048x1536(3MP) / 30fps@1920 x1080(2MP)
Frame Rate	Up to 10fps / Up to 30fps based on Resolution
Streaming Capability	Dual-Stream at Different Rates and Resolutions
IP	IPv4, IPv6
Protocol	TCP/IP, HTTP, DHCP, PPPoE, HTTPS, ICMP, ARP, RTSP, NTP, UDP, NTP, SMTP, RTP, RTCP, 3GPP, SAMBA (NAS)
Maximum User Access	10 Users
ONVIF Conformance	Yes , Profile S
Web Viewer	OS: Windows XP / Vista / 7, MAC OS Browser: I.E. 8 or Higher, Chrome, Firefox, Safari
Video Management Software	DW Spectrum
Memory Slot	Micro SDHC Card (4GB-32GB) Card Not Included*
ENVIRONMENTAL	
Operating Temperature/ Humidity	-40°C - 60°C (-40°F - 140°F)
Operating Humidity	Less than 80% (Non-Condensing)
Storage Temperature	-29°C - 55°C (-20°F - 131°F)
IP Rating	IP67 (Vandal Proof, protects against dust & high pressure water)
Other Certifications	CE, FCC, RoHS
ELECTRICAL	
Power Requirement	DC 8-25V, AC 24V, PoE (IEEE802.3af Class 3)
Power Consumption	Max 8.9W, 600mA
MECHANICAL	
Material	Aluminum Housing
Dimensions	95(W) x 95(H) x 251(D)mm (3.74 x 3.74 x 9.88 Inch)
Weight	3.97 lbs

*Specification is subject to change without prior notice.

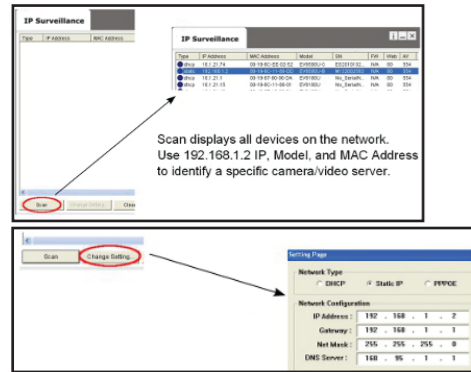
8

MEGAPIX CAMERA SETUP

Installing DWScan

DWScan searches for all the available supported network devices on your local area network.

1. Install DWScan to find the MB950TIR Cameras on the local network. The DWScan software can be found on the included CD. Run DWScan and install onto your PC.
2. When setup is complete, launch the DWScan software.
3. To find your MB950TIR cameras, click the Scan button.
4. You can use the DWScan software to adjust the camera's IP Address and Network Settings
5. To change the camera's Network Settings, press the Change Settings button.

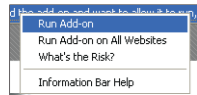


Accessing the Camera Using its Web Browser

For advanced setup and camera view, access the camera using its built-in web server.

When accessing an IP camera using the web interface for the first time (or when the IP address changes), some configuration for ActiveX controls are required.

1. Open an IE browser
2. Type in the IP address in the URL: http://<IP ADDRESS> (e.g. http://10.1.21.53).
3. Default Username and Password: root/ pass.
4. Pop-up windows and messages for download/run Active X controls (examples below) will likely be displayed. Select Install or Run to all such messages. Click on the add-on message and choose Run Add-on.



5. Repeat the above until all ActiveX controls have been initiated. Once the process is complete, the Live View will be displayed in IE.
6. When all Active X files have been properly installed, the web viewer will display the camera's live video and control center.

The web viewer can also be accessed via Firefox and Google Chrome if QuickTime player is installed.

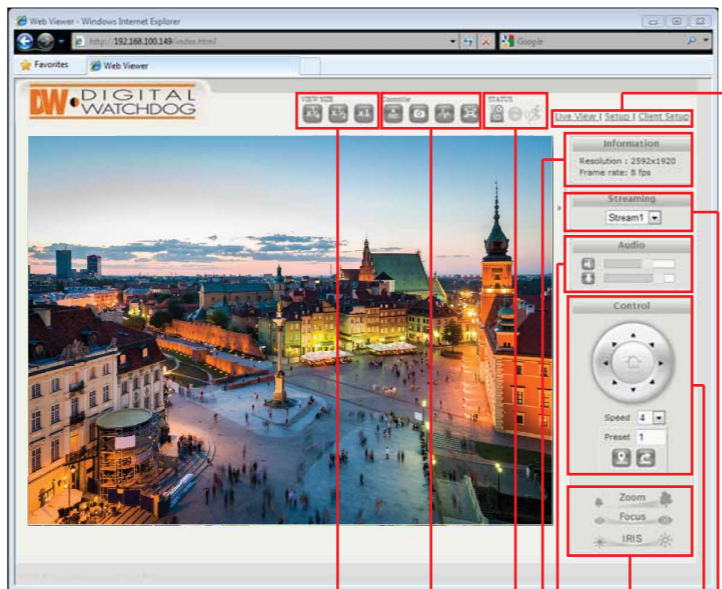
Webviewer Specifications

Minimum Requirements for PC

CPU	Intel P4 2.0GHz Dual Core
RAM	More than 1GB
HDD	200GB Required for Saving Clip Image
OS	Microsoft Windows XP or Higher
Resolution	Higher than 1024X768

Accessing the Camera

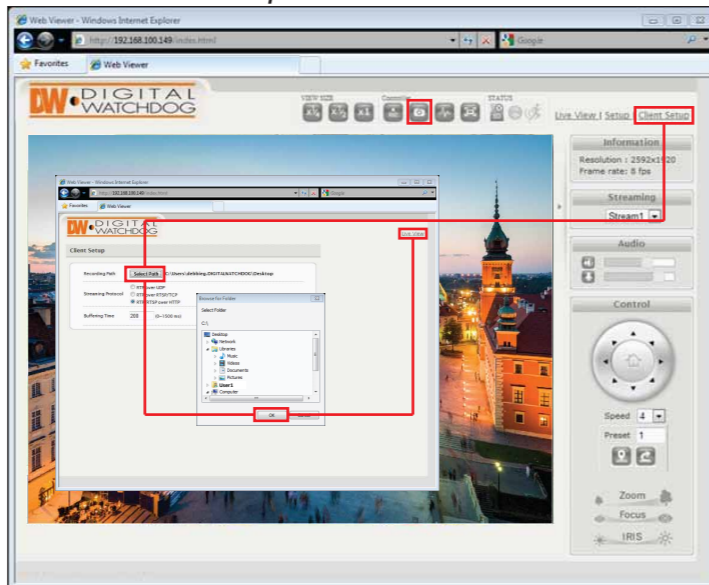
Web Viewer Interface



- Video Display Size
- Video Controllers
- Alarm Indicators
- Video Resolution & FPS Information
- Audio Controllers
- Lens Controllers
- PTZ Virtual Controller
- Stream Selection
- Live/ Setup/ Client Setup Access

Export Image

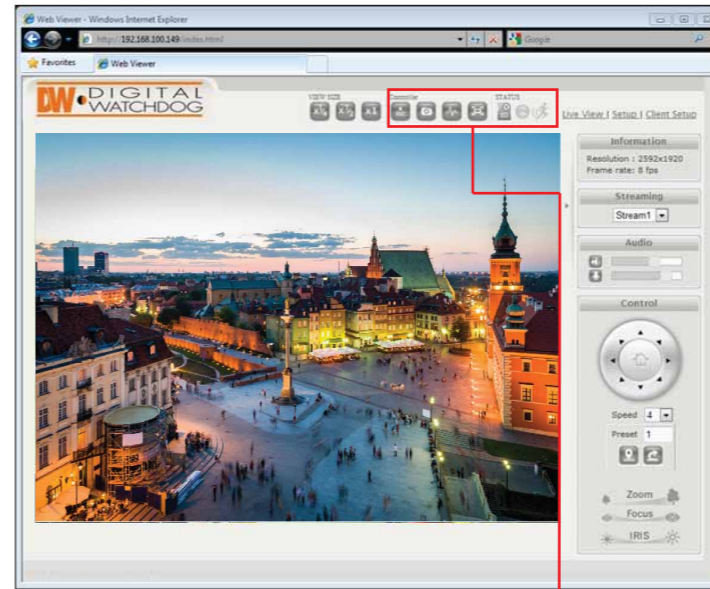
Not available in the DW Optimized Firmware



1. Make sure the directory path has been setup. To do so:
 - a. Go to Client Settings at the top right-hand corner of the screen.
 - b. Press 'Select Path' to select the directory where all exported images will be saved to.
 Settings will be saved automatically.
2. To export an image of the camera's current live view, press the button at the top control bar. An image with time stamp will automatically be saved as a JPEG file.

Relay Input and Alarm Output Control

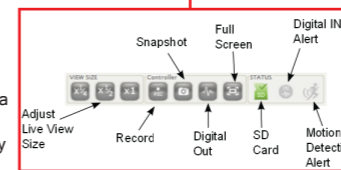
Remote Video Monitoring



Use the camera's control bar and status indicators to manage the camera's relay and alarm inputs and outputs.

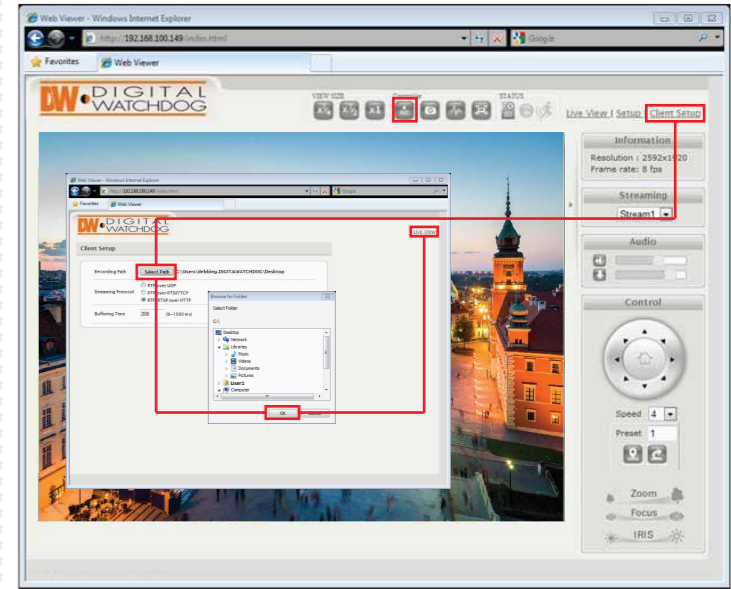
- Digital IN Alert will blink to notify you when a relay connected to the camera is triggered.
- Use the Digital Out button to start/ stop any alarm output connected to the camera.

Refer to the full manual for more information on how to setup relay input and output control in the camera.



Instant Recording

Instantly record live video to your local drive.



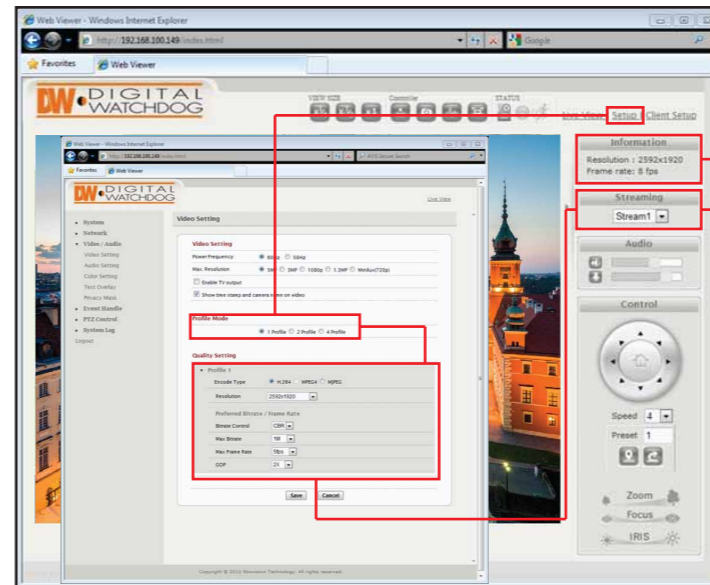
To Setup Instant Recording

Make sure the directory path is setup. To do so go to Client Settings at the top right-hand corner of the screen and press 'Select Path'

To Start and Stop Instant Recording

To Start, press the icon on the control menu bar. A window will appear to notify you instant recording has begun. The button will blink red indicating you are currently recording video. To Stop, press the button again. The video file will appear in the designated directory path.

Stream Setup and Selection



- The MB950TIR supports multiple simultaneous streams (up to 4 different profiles). The Streams can be switched from the camera's web viewer by selecting the corresponding stream from the drop down menu in the Stream Control option. The stream's current resolution and framerate information will be displayed in the information section.
- To setup the different streams:
- a. Go to 'Setup' at the top right-hand corner of the screen. The setup menu will appear.
 - b. Go to Video/Audio > Video Settings
 - c. Select the number of profiles you would like to assign the camera.
 - d. All selected profiles will appear under the Quality Setting Section. Here you can modify each stream's resolution, codec, bitrate, and max framerate.
 - e. Press 'Save' to save all settings.

SD Card Installation & Setup

The MB950TIR supports local storage recording as well as remote FTP and NAS recording. All recording settings can be done by pressing 'Setup' in the upper right-hand corner of the screen.

