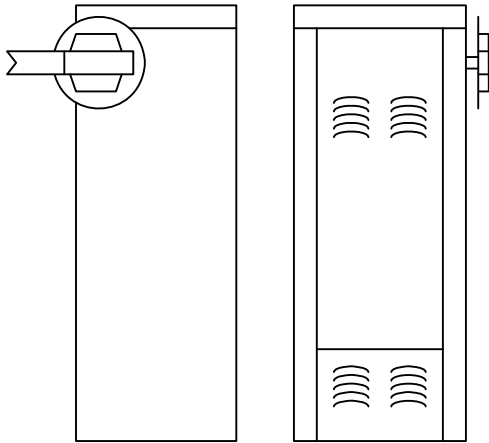


MODEL 1601 Barrier Gate Operator

Maximum arm length 14-feet

The Model 1601 is designed for high usage vehicle control applications in traffic lanes up to 14-feet wide. The arm will rotate to the full up position in approximately 1.5 seconds.



Standard Features

- 1/2 - HP continuous duty motor
- 40:1 gear reducer rotates full 360°
- Left or right hand mount
- Maintenance free magnetic limits
- Plug-in loop detectors
- 2 convenience outlets
- Up input memory buffer
- Down memory option
- Multiple UP commands
- Built-in timer
- Auto-sequencing inputs for easy interface with slide or swing gate operators
- Gate Tracker reporting output provides operator data to access control system* (*DKS systems with card access only)
- 5-year limited warranty

Options

- DC Powered convenience open
- 14-foot aluminum arm – round 3" diameter
- 14-foot wood arm 1 x 4 kiln dried wood
- 12-foot plastic arm 2.5" x 2.5"
- Wood arm folding bracket for low headroom
- Plastic arm folding bracket for low headroom
- Fan Kit – recommended in hot, humid environments
- Heater Kit – recommended when temperatures routinely fall below 10°F (-12°C).
- Crank option (to raise arm)
- Plug-in loop detectors
- Gate operator control stations
- **Secondary entrapment prevention devices should be used with this barrier gate operator. Refer to Section 3, Pg 9-11 for selection of devices.**

Dimensions	Shipping Weight	Regulatory	Power
1601 39.75"H x 15.25"W x 14.75"D	165-210 Lbs.	Class: II, III, IV	115 VAC, 60 Hz 5.4 A
			230 VAC, 60 Hz 2.7 A
			460 VAC, 60 Hz 1.4 A

STEP 1 – Select Operator(s)		
P/N	Description	
1601-080	Barrier Gate Operator, 1/2 HP, 115 VAC	
1601-087	Barrier Gate Operator, 1/2 HP, 230 VAC	(Note 2)
1601-089	Barrier Gate Operator, 1/2 HP, 460 VAC	(Note 2)
1601-081	Barrier Gate Operator w / DC convenience open, 1/2 HP, 115 VAC	
1601-088	Barrier Gate Operator w / DC convenience open, 1/2 HP, 230 VAC	(Note 2)
1601-090	Barrier Gate Operator w / DC convenience open, 1/2 HP, 460 VAC	(Note 2)

STEP 2 – Select Hardware Kit		
P/N	Description	
1601-240	Wood Arm Hardware Kit (Arm NOT included)	Note 1
1601-241	Plastic Arm Hardware Kit (Arm NOT Included)	Note 1
1601-242	Aluminum Arm Hardware Kit (Arm NOT Included)	Note 1

STEP 3 – Select Arm		
P/N	Description	
1601-048	14-foot wood arm	
1601-084	Wood arm and folding bracket assembly	
1601-071	12-foot plastic arm	
1601-083	Plastic arm and folding bracket assembly	
1601-216	14-foot aluminum arm	
1601-310	Aluminum arm and folding bracket assembly.	

Accessories		
P/N	Description	
9409-010	DoorKing plug-in 2-channel detector. Use with DKS operators only.	
9410-010	DoorKing plug-in single channel detector. Use with DKS operators only.	
1601-260	Foam padding kit for aluminum or wood arm	
1601-092	Heater Kit	
1601-093	Fan Kit	
1601-270	Factory installed arm crank to raise arm in case of power outage	

Notes:

- (1) Arm hardware kits include the arm mounting hub, the appropriate arm mounting bracket and necessary hardware. These kits DO NOT include the arm itself.
- (2) These operators use a step-down transformer to achieve 115 VAC operating voltage.