



900 MHz Wireless

TRACKER BOARD EXPANSION SYSTEM

TELEPHONE ENTRY / ACCESS CONTROL SYSTEMS



Now you can add access points just about anywhere.

- Works with: 1833, 1835, 1837 (80 and 90 Series) and 1838.
- Wireless kits provide a 900MHz LoRa® link between the access controller and card readers, keypads or almost any 26, 30 or 31-bit Wiegand device.
- Connect card readers, keypads and other devices to the access controller without the need for trenching, conduits or wire runs. This is a great time, labor and money saver.
- RF signals are encrypted to provide a secure data link between the access points and the access controller.



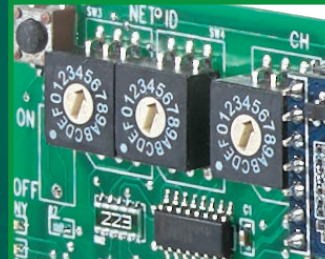
Reverse Compatibility

Wireless kits provide a 900MHz LoRa® link between the access controller and card readers, keypads or almost any 26, 30 or 31-bit wiegand device.



Easy Installation

Connect card readers, keypads and other devices to the access controller without the need for trenching, conduits or wire runs. This is a great time, labor and money saver!



Simple Setup

Install the wireless kits in the access controller and remote access devices, power up the system and set the channel IDs.



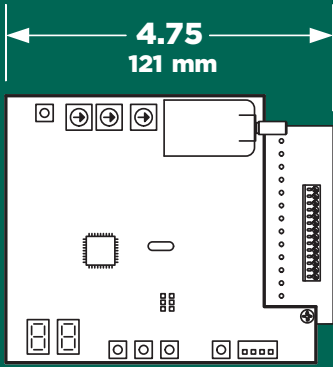
Secure

RF signals are encrypted to provide a secure data link between the access points and the access controller.

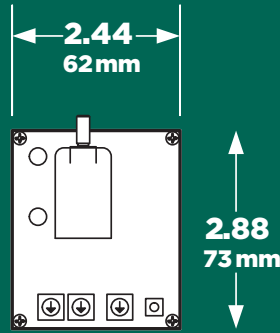
ACCESS CONTROL SOLUTIONS



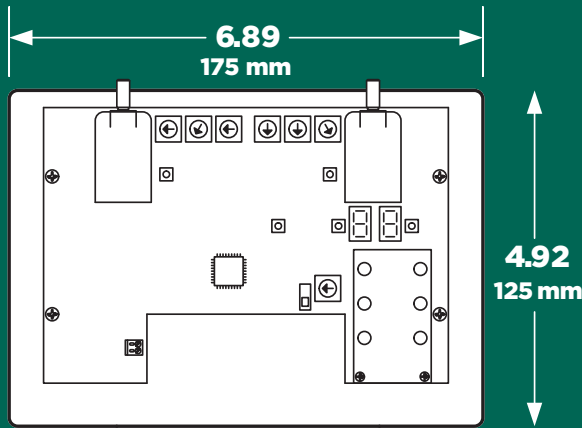
900 MHz Wireless TRACKER BOARD EXPANSION



2333-080 Baseboard



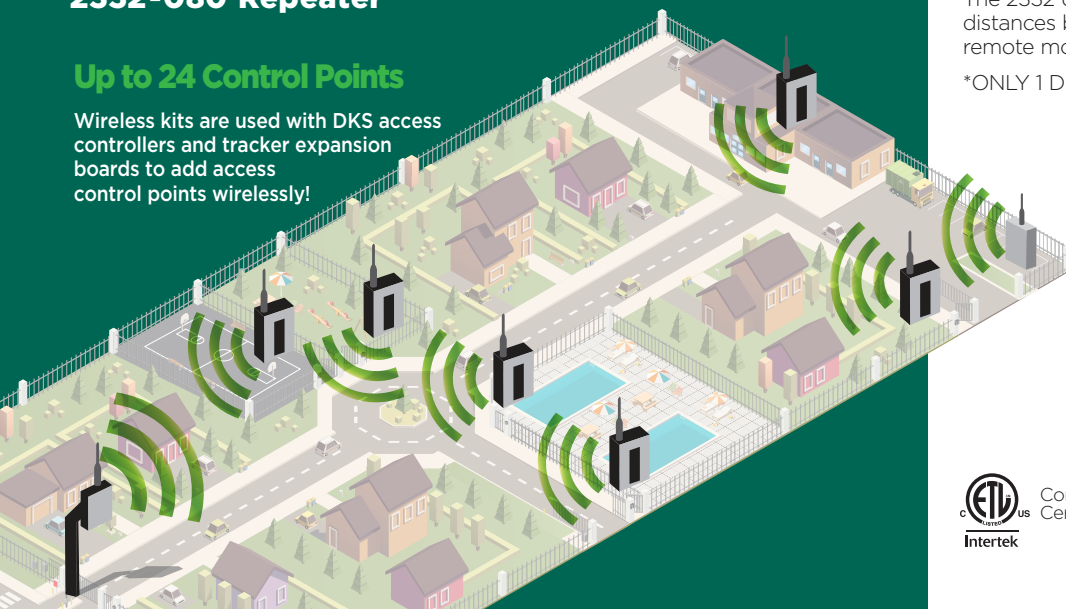
1470-080 Remote



2332-080 Repeater

Up to 24 Control Points

Wireless kits are used with DKS access controllers and tracker expansion boards to add access control points wirelessly!



TECHNICAL FEATURES

ADVANTAGES

Simplifies expanding even older systems! Wireless baseboard kit can be installed on any DKS 1833, 1835, 1837 or 1838 access controller with an 1830 series circuit board - regardless of how old the system may be.

Repeaters can extend the RF range.

Encrypted RF transmission designed with LoRa® technology.

900 MHz spectrum.

16 Channels, 16 Network IDs (256 unique settings) for secure communication.

Adjustable RF signal strength.

Troubleshooting LEDs.

Add access control points without the need to run additional wiring. DKS tracker expansion boards and wireless expansion board kits are compatible with almost any 26, 30 or 31-bit* wiegand device.

* 30 and 31-bit wiegand devices are limited to 255 facility codes (or less), or choose "Ignore Facility Codes" when setting up the access controller in the DKS Remote Account Manager software.

2333 WIRELESS BASEBOARD

The 2333 RF baseboard is installed in the 1833, 1835, 1837 and 1838 access controller and can communicate with up to 24 remote access points.

1470 REMOTE MODULE

The 1470 RF remote module connects directly to a 2358 tracker expansion board to provide a wireless link between the expansion board and the 2333 baseboard.

2332 DUAL BAND REPEATER

The 2332 dual band repeater (DBR) can be used when distances between the 2333 baseboard and 1470 remote module are out of range with each other.

*ONLY 1 DBR can be used per each 2333 and 1470 set.



Conforms To UL STD 294:2018 Ed. 7
Certified To ULC S319:2005 Ed 1

DoorKing®, Inc.

Access Control Solutions since 1948



120 S. Glasgow Avenue,
Inglewood, California 90301 U.S.A.
Tel: 310-645-0023 FAX: 310-641-1586
www.doorking.com

© 2019 All Rights Reserved.
Product specifications may
change without notice. Rev.7/19

MEMBER:



DISTRIBUTED BY: