



# DynaLock™

*For Life*™



DYNALOCK CORPORATION



1989-2009  
20 YEARS OF EXCELLENCE

**LIST PRICE BOOK No. 10**  
Effective January 1, 2009

**Lifetime Warranty** ..... 3

**Terms and Conditions** ..... 4

## **Electromechanical Locks**

1300 Series Electric Deadbolt ..... 5

1600 Series Electric Strikes ..... 6

## **Electromagnetic Locks**

Electromagnetic Lock Family ..... 7

2000 Series 1200 Lbs. HF ..... 8

2013 Series Gate Lock 1200 Lbs. HF ..... 9

2600 Series Mortise 650 Lbs. HF ..... 9

2101 Series Early Warning 1200 Lbs. HF ..... 10

2268 Series Low Profile 1200 Lbs. HF ..... 11

2280 Series SlimLine 1200 Lbs. HF ..... 12

2500 Series Mini-Mag 650 Lbs. HF ..... 13

2585 Series Bantam 650 Lbs. HF ..... 14

2800 Series Door Holders ..... 15

Product Approvals ..... 16

3000 Series 1500 Lbs. HF ..... 17,18

Custom Length Housings ..... 19

3101B Series Delay Egress 1500 Lbs. HF ..... 20

3101B-ES Series Delay Egress Controller ..... 21

3101B-R Series Delay Egress Controller ..... 21

TJ Conversion Kits ..... 24

## **Mounting Brackets**

4000 Series Filler/Spacer Plates,  
Angle Brackets ..... 22,23

Specialty Brackets and Hardware ..... 24

## **Power Supplies**

5025 Series 1 Zone ..... 25

5500 Series up to 10 Zones ..... 26

5600 Series up to 10 Zones ..... 27

5200 Series Open Transformer ..... 28

5300 Series Plug-in Transformer ..... 28

5400 Series Battery Back-Up ..... 28

## **Access/Exit Controls**

6000 Series Monitor Panels ..... 29

6100 Series Pushbuttons ..... 29

6170 Series Weatherproof Pushbuttons ..... 32

6200 Series Pushbuttons ..... 30,31

6300 Series Audible ..... 31

6335/6336 Concealed Pushbuttons ..... 37

6350 4 Zone Delay Egress Monitor ..... 37

6370 Monitor/Reset Station ..... 37

6451 Series Exit Sensor Bar ..... 38

6500 Series High Visibility Pushplates ..... 33

6700/6800 Series Pushplates ..... 34

6705/6805 Series Handicapped Pushplates..... 35

6901 Series Specialty Pushplates ..... 36

7000 Series Keyswitches ..... 39

7075 Series Break Glass Exit Stations ..... 40

7200 Series Digital Keypad System ..... 41

8000 Series Consoles ..... 42-44

8500 Communicating Bathroom Systems ..... 46

## **Time Controllers**

7080 Series Time Delay Module ..... 40

7086 Series Programmable Timer ..... 40

## **Accessories**

7088 Rectifiers - Prewired ..... 40

9200 Series Door Status Switches ..... 45

9300 Series Door Cords ..... 45

**Product Approvals** ..... 16

**Wire Size Selection Chart** ..... 28

**Special Finishes** ..... 47

## **Locking System Kits**

1030 Series Locking System Kits ..... 48

**Reference Section** ..... 49



**DynaLife**<sup>®</sup>  
**Lifetime Warranty**

A lifetime warranty applies to all standard DynaLock products. Damaged products will be repaired or replaced at no charge. Non-standard electronic products, e.g. custom consoles, will be repaired, if possible, at no charge. Custom length housings and special finished products will be replaced only if factory defective. Charges may apply for products damaged by repeated abuse or errors in installation. Products not subject to charges do not have to be returned by the original purchaser.

Please follow this simple procedure when a problem occurs:

- Call toll free 877-DynaLock, ask for a sales engineer and explain the problem. Most problems are resolved by a simple phone consultation. If the problem is not solved, a Return Authorization (RMA) number will be issued to you.
- To request a Return Authorization, please fill out the form at [www.dynalock.com/rma](http://www.dynalock.com/rma) or look under 'Resources' at [www.dynalock.com](http://www.dynalock.com). An RMA number and instructions will be e-mailed to you within 48 hours. Alternatively, you may fax us at (860) 585-0338.
- Clearly mark the shipping container with the RMA number and ship the product prepaid to: DynaLock Corp., 705 Emmett Street, Bristol, CT 06010. The returned product will be repaired or replaced as soon as possible, usually within 48 hours.

WE ASSUME NO RESPONSIBILITY FOR INCIDENTAL OR CONSEQUENTIAL DAMAGES ARISING FROM DEFECTIVE PRODUCTS. OUR SOLE LIABILITY SHALL BE TO REPAIR OR REPLACE DEFECTIVE PARTS WHICH HAVE BEEN RETURNED TO US, POSTAGE PREPAID. EXCEPT FOR THE LIMITED WARRANTY PROVIDED HEREIN, WE EXPRESSLY DISCLAIM ALL WARRANTIES, EXPRESS OR IMPLIED, INCLUDING BUT NOT LIMITED TO ANY IMPLIED WARRANTIES OR MERCHANTABILITY OF FITNESS FOR A PARTICULAR PURPOSE OR WARRANTIES RELATING TO THE CONDITION OF OUR PRODUCTS.

## Emergency Technical Support

Routine technical support is available Monday - Friday, 8:00AM - 5:00PM (EST) by calling the factory toll-free at 1-877-DynaLock.

**Emergency technical support** is available Monday - Friday, 5:00PM - 8:00PM (EST) by calling:

Glen @ 860-637-2599  
or  
Mike @ 860-637-2394

# Terms and Conditions



- Terms:** 2% ten days, 30 days net from date of invoice. Minimum single invoice \$50.00 net, plus shipping. A late charge of 1.5% per month on any balance which remains unpaid after 60 days from date of invoice.
- Prices:** Unless firm prices have been quoted in writing for specific projects, all prices are subject to change and prices in effect on the date of shipment will apply. Prices apply to standard domestic packaging. Errors and omissions in pricing are subject to correction.
- Shipments:** All domestic shipments are F.O.B. DynaLock factory, unless otherwise agreed to in writing by DynaLock. Purchaser assumes risk of loss upon tender of goods to carrier.
- Acceptance of Orders:** All orders are subject to final acceptance by DynaLock's Customer Service/Order Entry Department. It is a purchaser's responsibility to assure that DynaLock's order acknowledgment is accurate.
- Claim and Notice of Non-Conformity:** Goods must be inspected promptly. Claims relating to nonconformity of goods or shipments must be reported within (10) business days following receipt of goods. All notices and claims must include Purchaser's order number and DynaLock's invoice number. Unless written notice of a claim of nonconformity is given within such 10-day period, the claim may be disregarded. DynaLock's liability for any nonconformity in goods or shipment is expressly limited to replacement of the goods or goods of equal value, together with transportation charges, if any, incurred by Purchaser. **PURCHASER SHALL NOT BE ENTITLED TO CLAIM CONSEQUENTIAL DAMAGES FOR ANY NONCONFORMITY OR DEFECT IN THE GOODS.**
- Cancellations:** Orders and/or items may be cancelled only with DynaLock's written consent. DynaLock reserves the right to impose a cancellation charge.
- Returns:** Returns will not be accepted without prior approval and a RMA number (Return Authorization) issued by DynaLock's Customer Service Department. Products returned for restocking subject to a **restocking charge of 30%**. Additional charges may be imposed if return is damaged. Purchaser must provide invoice number and information regarding original date of shipment with all returned goods. Any credit issued must be applied to open or future invoices. **Cash refunds will not be issued.** Custom products, e.g. consoles, custom length housings, special finished products cannot be returned for credit.
- Engineering Charges:** Engineering charges will be discussed, negotiated and estimated prior to any actual engineering services being performed. DynaLock will not be responsible or bound for estimates or preliminary discussions by telephone. Firm estimates will only be given after submittal of specifications, drawings and theory of operation.
- Taxes:** Purchaser is responsible for all taxes or charges in lieu of taxes now or hereafter imposed on the sale or transportation of goods purchased, except for income or similar taxes imposed on DynaLock.
- Governing Law:** The rights and obligations of DynaLock and Purchaser shall be governed by and construed in accordance with the laws of the State of Connecticut.
- No Modification:** These terms and conditions of sale cannot be modified or amended without DynaLock's consent. DynaLock shall not be bound by the terms or conditions of any purchase order, order acknowledgment or other form submitted by Purchaser unless DynaLock has consented in writing to such terms.
- Electromagnetic Lock Performance:** DynaLock electromagnetic lock holding force ratings are stated at peak performance ( $\pm 10\%$ ), under proper mounting and optimum input power conditions.
- Cost and Expenses:** In the event DynaLock incurs any expenses in connection with the enforcement of the Purchaser's obligations under this order, DynaLock shall be entitled to collect such costs, including reasonable attorney's fees from the Purchaser in connection therewith.

## WARNING:

**The items listed in this price book may require the services of an individual who is trained in the application and installation of security and access control equipment. All wiring must executed be in compliance with current National Electrical Code (NEC) guidelines.**

## 1300 Series Mortise Electric Deadbolt



1300 x ARSB

Mortise Mounted Narrow Design  
 \*Fail Safe Electric Deadbolt Lock  
 Specify 12 or 24 VDC/VAC when ordering.

Size: 1-1/2"W x 8"H x 1-5/8"D Backset  
 Current Draw: 0.85 Amps @ 12 VDC/VAC  
 0.45 Amps @ 24 VDC/VAC

\*Fail Safe operation indicates power required to lock. Interruption of power allows bolt to retract. Not suitable for use on wood door and frame installations or doors equipped with panic devices. Never use on doors designated for or in a path of egress.

MODEL	PRODUCT	FINISH	LIST PRICE
<b>1300-12</b>	Mortise Electric Deadbolt - 12 VAC/VDC	US28	388.00
<b>1300-24</b>	Mortise Electric Deadbolt - 24 VAC/VDC	US28	388.00

OPTIONS	LIST PRICE
<b>ARSB</b> Auto-Relock Switch - Ball Type	50.00
<b>ARSM</b> Auto-Relock Switch - Concealed Type	50.00
<b>BPS</b> Bolt Position Switch	50.00
<b>DPSB</b> Door Position Switch - Ball Type	50.00
<b>DPSM</b> Door Position Switch - Concealed Type	50.00
• <b>MB</b> Mounting Brackets (4 Pieces)	22.00

- NOTE: Required when retro-fitting into existing frame.



## 1600 Series Electric Strikes

DynaLock 1600 Series Electric Strikes are universally adaptable to suit all door and frame types and accommodate most locking devices with up to a 3/4" latch projection. To simplify ordering and speed installation all 1600 Series models feature 12/24V AC/DC field-selectable operation, dial-selectable fail-safe or fail-secure operating mode, 1/4" horizontal adjustment and modular, plug-in wire connections. All models are also available in a low-profile, 1-1/16" backset version, for narrow-style aluminum frames, which accept up to a 5/8" latch projection. Optional latch/keeper monitor switches are also available.

Current Draw: 0.375 Amps @ 12VDC; 0.565 Amps @ 12VAC  
0.190 Amps @ 24VDC; 0.280 Amps @ 24VAC

MODEL	PRODUCT	FINISH	LIST PRICE
<b>1604S</b>	Aluminum/Wood Frames, Std. Profile, 1-1/4" x 4-7/8"	US32D	174.00
<b>1604L</b>	Aluminum/Wood Frames, Low Profile, 1-1/4" x 4-7/8"	US32D	174.00
<b>1614S</b>	Steel/Wood Frames, Std. Profile, 1-1/4" x 4-7/8"	US32D	174.00
<b>1614L</b>	Steel/Wood Frames, Low Profile, 1-1/4" x 4-7/8"	US32D	174.00
<b>1605S</b>	Aluminum/Wood Frames, Std. Profile, 1-1/8" x 5-7/8"	US32D	179.00
<b>1605L</b>	Aluminum/Wood Frames, Low Profile, 1-1/8" x 5-7/8"	US32D	179.00
<b>1607S</b>	Aluminum/Wood Frames, Std. Profile, 1-1/4" x 6-7/8"	US32D	179.00
<b>1607L</b>	Aluminum/Wood Frames, Low Profile, 1-1/4" x 6-7/8"	US32D	179.00
<b>1608S</b>	Aluminum/Wood Frames, Std. Profile, 1-7/16" x 7-15/16"	US32D	185.00
<b>1608L</b>	Aluminum/Wood Frames, Low Profile, 1-7/16" x 7-15/16"	US32D	185.00

## 1661 Series Electric Rim Strikes



1661

DynaLock 1661 Series Electric Rim Strikes are universally adaptable to suit all door and frame types and accommodate Pullman latch rim exit devices with up to a 3/4" latch projection. To simplify ordering and speed installation, the 1661 Series models feature AC/DC operation (specify 12 or 24V), are fully reversible for left or right hand doors, and are horizontally adjustable to compensate for door misalignment. For surface applications a frame depth of 1-5/8" is required (for the electrical insert). Specify the RMP option for semi-mortise installations. For double door installations specify the DDH option to allow mounting of the 1661 on the inactive door leaf.

Current Draw: 0.20 Amps @ 12VDC; 0.15 Amps @ 12VAC  
0.11 Amps @ 24VDC; 0.07 Amps @ 24VAC

MODEL	PRODUCT	FINISH	LIST PRICE
<b>1661-12</b>	Fail Secure, 12 VAC/VDC, 1-3/4" x 9"	US32D	300.00
<b>1661-24</b>	Fail Secure, 24 VAC/VDC, 1-3/4" x 9"	US32D	300.00

## 1600 & 1661 SERIES OPTIONS

		LIST PRICE
<b>LMS</b>	Lock Monitor Switches - Indicate latch and keeper status. For the 1600 Series.	50.00
<b>SF</b>	Special Finishes - US32D standard. US3, US4, US10, US10B and US32 available. For the 1600 Series.	28.00
<b>DDH</b>	Double Door Housing. For the 1661 Series.	148.00
<b>RMP</b>	Rear Mounting Plate - Kit for semi-mortise installations or reinforcement in surface applications. For the 1661 Series.	36.00



### 1700 Series Fire-Labeled Electric Strikes

DynaLock 1700 Series Fire-Labeled Electric Strikes accommodate cylindrical, center line mortise, and narrow-line aluminum lock sets, along with mortise exit devices, with up to 3/4" latch projection (non-Pullman type). An enlarged latched cavity width allows compatibility with 3-piece, anti-friction latches. Fail-secure lock mode is standard and 12V and 24V models accept AC/DC input. All models are fully reversible for left or right-hand doors and standard mounting tabs and installation fasteners are included. Radius or square corner, US32D Stainless Steel, ANSI 4-7/8" x 1-1/4" faceplates are available.



1704



1714

MODEL	PRODUCT	FINISH	LIST PRICE
<b>1704-12</b>	Aluminum Frames, Radius Corners, 12VAC/VDC	US32D	310.00
<b>1704-24</b>	Aluminum Frames, Radius Corners, 24VAC/VDC	US32D	310.00
<b>1714-12</b>	Aluminum/Hollow Metal Frames, Square Corners, 12VAC/VDC	US32D	310.00
<b>1714-24</b>	Aluminum/Hollow Metal Frames, Square Corners, 24VAC/VDC	US32D	310.00

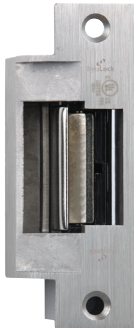
All models are Fire-Labeled, UL 10C (1-1/2 hr.) and UL 1034 Burglary-resistant.

Current Draw (Sound): 0.15 Amps @ 12VAC (Buzz)  
 0.20 Amps @ 12VDC (Silent)  
 0.07 Amps @ 24VAC (Buzz)  
 0.11 Amps @ 24VDC (Silent)



### 1800 Series Fire-Labeled Heavy-Duty Electric Strikes

DynaLock 1800 Series Fire-Labeled Heavy-Duty Electric Strikes accommodate cylindrical, center line mortise, and narrow-line aluminum lock sets, along with mortise exit devices, with up to 3/4" latch projection (non-Pullman type). All models are non-handed, feature horizontal adjustable (up to 1/4"), internal solenoid and a heavy-duty, cast stainless steel (US32D) housing. Additionally a concealed pry-guard and saddle-mount housing design enhance strength, durability and tamper resistance. Fail-secure lock mode is standard and 12V and 24V models accept AC/DC input. Choice of ANSI 4-7/8" x 1-1/4" (1814) or 9" x 1-3/8" (1819) faceplates.



1814



1819

MODEL	PRODUCT	FINISH	LIST PRICE
<b>1814-12</b>	4-7/8" x 1-1/4" Faceplate, 12VAC/VDC	US32D	370.00
<b>1814-24</b>	4-7/8" x 1-1/4" Faceplate, 24VAC/VDC	US32D	370.00
<b>1819-12</b>	9" x 1-3/8" Faceplate, 12VAC/VDC	US32D	410.00
<b>1819-24</b>	9" x 1-3/8" Faceplate, 24VAC/VDC	US32D	410.00

All models are Fire-Labeled, UL 10C (1-1/2 hr.) and UL 1034 Burglary-resistant.

Current Draw (Sound): 0.15 Amps @ 12VAC (Buzz)  
 0.20 Amps @ 12VDC (Silent)  
 0.07 Amps @ 24VAC (Buzz)  
 0.11 Amps @ 24VDC (Silent)



Fits Frames cut out for:

Folger Adam 712 (1814)

Folger Adam 310-2 (1819)

Von Duprin 6211 ANSI (1814)

Von Duprin 6215 (1819)

Von Duprin 6226 (1819)

## PREMIER LINE

### 3000 SERIES

1500 LBS. HF  
FAS-TRAK  
MOUNTING

#### FEATURES:

- FULL LINE OPTIONS
- UPGRADABLE CIRCUIT BOARD
- FAS-TRAK MOUNTING
- ONE PIECE HOUSING
- BUILT-IN PIR OPTION
- NO VISIBLE MOUNTING SCREWS

### 3101B SERIES

1500 LBS. HF  
DELAY EGRESS  
SYSTEM

#### FEATURES:

- FULL LINE OPTIONS
- FAS-TRAK MOUNTING
- ONE PIECE HOUSING
- CODE COMPLIANT MODELS
- NOT AFFECTED BY DOOR IRREGULARITIES
- SELF CONTAINED SYSTEM
- WORKS WITH EXISTING DOOR HARDWARE

## STANDARD LINE

### 2000 SERIES

1200 LBS. HF  
CONVENTIONAL  
MOUNTING

#### FEATURES:

- FULL LINE OPTIONS
- UPGRADABLE CIRCUIT BOARD
- ADJUSTABLE MOUNTING
- SEALED GATE LOCK MODEL
- LOW COST

## SLIM LINE

### 2268 SERIES

1200 LBS. HF  
"CLASSIC"  
LOW-PROFILE

#### FEATURES:

- FULL LINE OPTIONS
- LOW 2" PROFILE
- RETROFITS SOME EXISTING LOCKS

### 2280 SERIES

1200 LBS. HF  
"CLASSIC"  
LOW-PROFILE

#### FEATURES:

- FULL LINE OPTIONS
- UPGRADABLE CIRCUIT BOARD
- ONE PIECE HOUSING

## MINI LINE

### 2500 SERIES

650 LBS. HF  
STANDARD  
MINI-MAG

#### FEATURES:

- FULL LINE OPTIONS
- UPGRADABLE CIRCUIT BOARD
- LOW-1-3/4" PROFILE
- LOW COST

### 2585 SERIES

650 LBS. HF  
"BANTAM"  
COMPACT LOCK

#### FEATURES:

- SMALL 8-1/2" LENGTH
- LOW COST

### 2600 SERIES

650 LBS. HF  
SLIDING DOOR  
MORTISE LOCK

#### FEATURES:

- NARROW 1-1/2" WIDTH
- OPTIONAL SLIDING DOOR MOUNTING HARDWARE



# Electromagnetic Locks



2011

## 2000 Series 1200 Lb.

Electromagnetic locks, surface mounted for outswing or inswing single or double doors.  
 Size: 1-1/2"D x 2-3/4"H x 11"L Single or 22"L Double  
 Multi-voltage field selectable 12/24 VAC/VDC  
 Current Draw: 0.42 Amps @ 12V Single / 0.84 Amps Double  
 0.21 Amps @ 24V Single / 0.42 Amps Double



2012

MODEL	PRODUCT	FINISH	LIST PRICE
<b>2011</b>	Single Electromagnetic Lock Outswing	US28	403.00
<b>2012</b>	Single Electromagnetic Lock Pair Outswing	US28	449.00
<b>2022</b>	Double Electromagnetic Lock Outswing	US28	806.00
<b>2011TJ20</b>	Single Electromagnetic Lock Inswing	US28	517.00
<b>2012TJ21</b>	Single Electromagnetic Lock Pair Inswing	US28	622.00
<b>2022TJ22</b>	Double Electromagnetic Lock Pair Inswing	US28	1034.00



2022

OPTIONS	LIST PRICE
• <b>DSM</b>	Door Status Switch - Signals door closed or ajar. 56.00
<b>DSM2</b>	Door Status Switch - For the 2022 Series. 112.00
• <b>HSM</b>	High Security Monitor. Includes the following: 89.00 Door Status Switch - Signals door closed or ajar. Dynastat Force Sensor - Indicates efficient magnetic bond.
<b>HSM2</b>	High Security Monitor - For the 2022 Series. 178.00
• <b>VOP</b>	Value Option Package. Includes the following: 155.00 Door Status Switch - Indicates door closed or ajar. Dynastat Force Sensor - Indicates efficient magnetic bond. Anti-Tamper Switch - Signals removal of wiring access cover. Relock Time Delay - Adjustable 1-80 Seconds.
<b>VOP2</b>	Value Option Package - For the 2022 Series. 310.00
<b>TD</b>	Relock Time Delay - Adjustable 1-80 Seconds. 66.00
<b>CLH</b>	Custom Length Housing - See page 19.
* <b>LCB</b>	Basic Lock Less Circuit Board Single Deduct(20.00) Double Deduct(40.00)
• <b>LED</b>	Bi-Color LED - For local signaling of lock status. 36.00 (Requires HSM or VOP Option. Not available on TJ models.)
<b>LED2</b>	Bi-Color LED's (2) - For the 2022 Series. (Requires HSM2 or VOP2 Option. Not available on TJ models.) 72.00
<b>LP</b>	Low Power Coil - 12V only @ 0.16 Amps (Single Lock) 11.00
<b>LP2</b>	Low Power Coils - 12V only @ 0.32 Amps (Double Lock) 22.00
<b>OFA</b>	Offset Armature - For narrow style storefront doors. N/C (When ordered with lock)
<b>SF</b>	Special Finish - Standard finish US28. Special anodized finishes see page 47.



NYC MEA  
#23-92-E

Notes: • DSM, HSM, VOP and LED options not available on the 2012 Series.  
 \* DSM, HSM, VOP, TD and LED options not available with the LCB option.



2013



NYC MEA  
#23-92-E

## 2013 Series 1200 Lb. Gate Lock

Electromagnetic lock, surface mounted for sliding or swinging gates. Face drilled mounting holes, weather resistant, sealed 1/2" NPT conduit fitting with six foot long 18AWG leads.  
Field selectable 12/24 VDC  
Size: 1-1/2"D x 2-1/2"H x 9-1/4"L  
Current Draw: 0.42 Amps @ 12VDC  
0.21 Amps @ 24VDC

MODEL	PRODUCT	FINISH	LIST PRICE
2013	Single Gate Lock - 12/24 VDC	US28	433.00

OPTIONS		LIST PRICE
<b>DYN</b>	Dynastat Force Sensor - Indicates efficient magnetic bond.	66.00
<b>GLB</b>	Gate Lock Bracket - Fully adjustable "Z" bracket for swinging gate applications.	111.00
<b>GLB2</b>	Gate Lock Bracket - "L" Brackets for sliding gate application.	137.00
<b>RWE</b>	Rear Wire Exit - Coil wiring exits from back of housing in lieu of conduit nipple.	N/C
<b>SF</b>	Special Finish - Standard finish US28. Special anodized finishes see page 47.	

Notes: For AC operation order #7088 Pre-wired Rectifier Bridge. See page 40.



2600

## 2600 Series 650 Lb. Mortise Lock

Electromagnetic lock, mortise mounted for sliding door.  
Field selectable 12/24 VDC  
Size: 1-1/2"W x 8-3/4"H x 1-1/8"D  
Current Draw: 0.50 Amps @ 12VDC  
0.25 Amps @ 24VDC

MODEL	PRODUCT	FINISH	LIST PRICE
2600	Single Mortise Lock - 12/24 VDC	US28	346.00

OPTIONS		LIST PRICE
<b>AMB</b>	Armature Mounting Block	53.00
<b>DYN</b>	Dynastat Force Sensor - Indicates efficient magnetic bond.	66.00
<b>MB</b>	Mounting Brackets - Two piece kit.	21.00
<b>SF</b>	Special Finish - Standard finish US28. Special anodized finishes see page 47.	

Notes: For AC operation order #7088 Pre-wired Rectifier Bridge. See page 40.

## 2101 Series 1200 Lb. Early Warning Lock



2101

Electromagnetic lock, surface mounted for outswing doors. Includes early warning door movement sensor output and door status output. Designed to initiate a remote alarm upon unauthorized exit attempts or to trigger an off-site delay egress system.

Size: 1-1/2"D x 2-3/4"H x 11"L

Field selectable 12/24 VDC

Current Draw: 0.42 Amps @ 12VDC

0.21 Amps @ 24VDC

MODEL	PRODUCT	FINISH	LIST PRICE
<b>2101</b>	Single Lock - 12/24 VDC	US28	528.00

OPTIONS	LIST PRICE
<b>LP</b> Low Power - 12VDC only @ 0.16 Amps	11.00
<b>SF</b> Special Finish - Standard finish US28. Special anodized finishes see page 47.	

Notes: For AC operation order #7088 Pre-wired Rectifier Bridge. See page 40.

## 2268 Series 1200 Lb. Classic Low Profile



2268-10

"Classic" low profile electromagnetic locks, surface mounted for single and double outswing or inswing doors. Retrofits some existing locks.

Size: 2-3/16"D x 2"H x 14"L Single or 25"L Double

Multi-voltage field selectable 12/24 VDC

For AC operation specify RC Option.

Current Draw: 0.68 Amps @ 12VDC Single / 1.36 Amps Double  
0.35 Amps @ 24VDC Single / 0.70 Amps Double



2268-15

MODEL	PRODUCT	FINISH	LIST PRICE
<b>2268-10</b>	Single Electromagnetic Lock Outswing	US28	443.00
<b>2268-15</b>	Single Electromagnetic Lock Pair Outswing	US28	493.00
<b>2268-20</b>	Double Electromagnetic Lock Pair Outswing	US28	886.00
<b>2268-TJ10</b>	Single Electromagnetic Lock Inswing	US28	554.00
<b>2268-TJ20</b>	Double Electromagnetic Lock Pair Inswing	US28	1108.00



2268-20

OPTIONS		LIST PRICE
<b>ATS</b>	Anti-Tamper Switch - Signals removal of the housing cover.	42.00
• <b>DSM</b>	Door Status Switch - Signals door closed or ajar.	56.00
<b>DSM2</b>	Door Status Switch - For the 2268-20 Series.	112.00
• <b>DYN</b>	Dynastat Force Sensor - Indicates efficient magnetic bond.	66.00
<b>DYN2</b>	Dynastat Force Sensor - For the 2268-20 Series.	132.00
• <b>LED</b>	Bi-Color LED - For local signaling of lock status. (Requires DYN Option)	36.00
<b>LED2</b>	Bi-Color LED's (2) - For the 2268-20 Series. (Requires DYN2 Option)	72.00
<b>RC</b>	Rectifier For AC Operation. For 2268-10 and 2268-15 only.	23.00
<b>RC2</b>	Rectifier For AC Operation. For the 2268-20 only.	46.00
<b>SF</b>	Special Finish - Standard finish US28. Special anodized finishes see page 47.	
<b>TD</b>	Time Delay - 1-60 seconds. For 2268-10 & 2268-15 only.	66.00
<b>TD2</b>	Time Delay - 1-60 seconds. For the 2268-20 only.	132.00



2268-TJ10



2268-TJ20

Notes: • DSM, DYN and LED options not available on the 2268-15 Series.



## 2280 Series 1200 Lb. SlimLine



2280

New "upscale" low profile electromagnetic locks, surface mounted for single and double outswing or inswing doors. Seamless one-piece lock housings mount with an adjustable baseplate for quicker installations. Armatures utilize high-impact plastic housings, with incorporated foam pads to reduce noise. When ordered with DSM, concealed disc magnets are included at each end of the armature housings.

Size: 1-1/2"D x 2-1/16"H x 12-3/4"L Single or 25-1/2"L Double  
Multi-voltage field selectable 12/24 VDC/VAC

Current Draw: 0.68 Amps @ 12VDC Single / 1.36 Amps Double  
0.35 Amps @ 24VDC Single / 0.70 Amps Double



2282

MODEL	PRODUCT	FINISH	LIST PRICE
<b>2280</b>	Single Electromagnetic Lock Outswing	US28	485.00
<b>2282</b>	Double Electromagnetic Lock Pair Outswing	US28	970.00
<b>2280-TJ80</b>	Single Electromagnetic Lock Inswing	US28	607.00
<b>2282-TJ82</b>	Double Electromagnetic Lock Pair Inswing	US28	1214.00



2280-TJ80

OPTIONS		LIST PRICE
<b>DSM</b>	Door Status Switch - Signals door closed or ajar.	56.00
<b>DSM2</b>	Door Status Switch - For the 2282 Series.	112.00
<b>DYN</b>	Dynastat Force Sensor - Indicates efficient magnetic bond.	66.00
<b>DYN2</b>	Dynastat Force Sensor - For the 2282 Series.	132.00
<b>LED</b>	Bi-Color LED - For local signaling of lock status. Flying leads. (Order with DYN. Not available on TJ models.)	36.00
<b>LED2</b>	Bi-Color LED's (2) - For the 2282 Series. Flying leads. (Order with DYN2. Not available on TJ models.)	72.00
<b>SF</b>	Special Finish - Standard finish US28. For special anodized finishes, see page 47.	



2282-TJ82

Note: For adjustable time delayed relocking, specify Model 7080 in-line time delay module (sold separately).

## 2500 Series 650 Lb. "Mini"



2511

Mini electromagnetic locks, surface mounted for single and double outswing or inswing doors.  
 Size: 1-1/4"D x 1-3/4"H x 10-1/2"L Single or 21"L Double  
 Multi-voltage field selectable 12/24 VAC/VDC  
 Current Draw: 0.50 Amps @ 12V Single / 1 Amp Double  
 0.25 Amps @ 24V Single / 0.50 Amps Double



2522

MODEL	PRODUCT	FINISH	LIST PRICE
<b>2511</b>	Single Electromagnetic Lock Outswing	US28	340.00
<b>2522</b>	Double Electromagnetic Lock Pair Outswing	US28	680.00
<b>2511TJ</b>	Single Electromagnetic Lock Inswing	US28	422.00
<b>2522TJ2</b>	Double Electromagnetic Lock Pair Inswing	US28	844.00



2511TJ

OPTIONS		LIST PRICE
<b>ATS</b>	Anti-Tamper Switch - Signals removal of the housing cover.	44.00
<b>CLH</b>	Custom Length Housing - See page 19.	
<b>DSM</b>	Door Status Switch - Signals door closed or ajar.	56.00
<b>DSM2</b>	Door Status Switch - For the 2522 Series.	112.00
<b>DYN</b>	Dynastat Force Sensor - Indicates efficient magnetic bond.	66.00
<b>DYN2</b>	Dynastat Force Sensor - For the 2522 Series.	132.00
<b>LED</b>	Bi-Color LED - For local signaling of lock status. (Requires DYN Option. Not available on TJ models.)	36.00
<b>LED2</b>	Bi-Color LED's (2) - For the 2522 Series. (Requires DYN2 Option. Not available on TJ models.)	72.00
<b>SF</b>	Special Finish - Standard finish US28. Special anodized finishes see page 47.	



2522TJ2





2585

## 2585 Series 650 Lb. "Bantam"

"Bantam" electromagnetic lock, surface mounted for single outswing or inswing doors.

Size: 1-1/4"D x 1-3/4"H x 8-1/2"L

Field Selectable 12/24 VDC.

Current Draw: 0.50 Amps @ 12VDC  
0.25 Amps @ 24VDC



2585-TJ85

MODEL	PRODUCT	FINISH	LIST PRICE
<b>2585</b>	Single Lock Outswing	US28	327.00
<b>2585-TJ85</b>	Single Lock Inswing	US28	409.00

OPTIONS	LIST PRICE
<b>DSM</b> Door Status Switch - Signals door closed or ajar.	56.00
<b>SF</b> Special Finish - Standard finish US28. Special anodized finishes see page 47.	

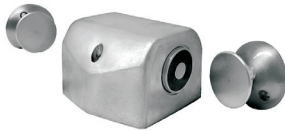


Notes: For AC operation order #7088 Pre-wired Rectifier Bridge. See page 40.

# 2800 Series Electromagnetic Door Holders



2801



2802



2804



2805



2806



2810



2860



2863



2870

## 2800 Series Electromagnetic Door Holders

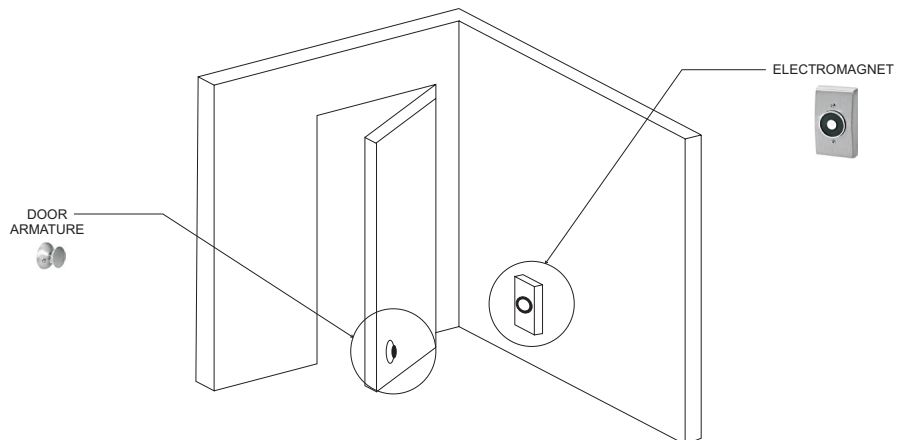
DynaLock 2800 Series Electromagnetic Door Holders accept Tri-Voltage, 12VDC, 24VAC/VDC, or 120VAC input (Model 2810 is 24VAC/VDC, only). Standard models are offered for single or double doors and deliver 30-45 lbs. holding force. High-security Model 2810 delivers 400 lbs. holding force.

CURRENT DRAW	VOLTAGE
0.060 AMPS	12VDC
0.030 AMPS	24VAC/VDC
0.105 AMPS	24VAC/VDC (2810)
0.030 AMPS	120VAC



MODEL	PRODUCT	LIST PRICE
<b>2801</b>	Floor Mount, Single Door	\$264.00
<b>2802</b>	Floor Mount, Double Door	\$332.00
<b>2803</b>	Flush Wall Mount, 1" Extended Armature	\$155.00
<b>2804</b>	Flush Wall Mount, Standard Armature	\$143.00
<b>2805</b>	Surface Wall Mount	\$163.00
<b>2806</b>	Low Profile Wall Mount	\$155.00
<b>2810</b>	Surface Wall Mount, 400 lbs. Holding Force	\$410.00

ACCESSORIES	PRODUCT	LIST PRICE
<b>2860</b>	Door Armature & Base, Replacement	\$69.00
<b>2861</b>	Armature Extension, 1/2"	\$11.00
<b>2862</b>	Armature Extension, 3/4"	\$11.00
<b>2863</b>	Armature Extension, 1"	\$11.00
<b>2864</b>	Armature Extension, 2"	\$18.00
<b>2865</b>	Armature Extension, 4"	\$30.00
<b>2866</b>	Armature Extension, 6"	\$42.00
<b>2870</b>	Armature Swivel Extension	\$26.00





SERIES	DESCRIPTION	FILE NO.
<b>1200 SERIES:</b>		
UL & CUL	Electrically Controlled Single Point Locks or Latches	FILE #R16716
<b>1600 SERIES:</b>		
UL	Burglary-Resistant Electric Door Strikes	FILE #BP7294
<b>2000 SERIES:</b>		
UL & CUL	Auxiliary Locking Device	FILE #R15538
MEA	City of New York Dept. of Buildings	MEA 23-92-E Vol.II
<b>2268 SERIES:</b>		
UL & CUL	Auxiliary Locking Device	FILE #R15538
<b>2500 SERIES:</b>		
UL & CUL	Auxiliary Locking Device	FILE #R15538
MEA	City of New York Dept. of Buildings	MEA 23-92-E Vol.II
<b>2585 SERIES:</b>		
UL & CUL	Auxiliary Locking Device	FILE #R15538
<b>2800 SERIES:</b>		
UL & CUL	Door Holders	FILE #R6291
MEA	City of New York Dept. of Buildings	MEA 646-74-SM Vol. I
<b>3000 SERIES:</b>		
UL & CUL	Auxiliary Locking Device	FILE #R15538
MEA	City of New York Dept. of Buildings	MEA 23-92-E Vol.II
CSFM	California State Fire Marshal	#3774-1457:101
<b>3000LC SERIES:</b>		
UL & CUL	Auxiliary Locking Device	FILE #R15538
MEA	City of New York Dept. of Buildings	MEA 23-92-E Vol.II
CSFM	California State Fire Marshal	#3774-1457:101
<b>3006 SERIES:</b>		
UL & CUL	Auxiliary Locking Device	FILE #R15538
<b>3101 SERIES:</b>		
UL & CUL	Special Locking Device	FILE #SA9532
	Auxiliary Locking Device	FILE #R15538
CHGO	City of Chicago Dept. of Buildings	CODE #13-160-269
CSFM	California State Fire Marshal	#3774-1457:100
<b>3101B SERIES:</b>		
UL & CUL	Special Locking Device	FILE #SA9532
	Auxiliary Locking Device	FILE #R15538
CSFM	California State Fire Marshal	#3774-1457:100
<b>5000 SERIES:</b>		
UL & CUL	General Purpose Power Supplies	FILE #E183665
MEA	City of New York Dept. of Buildings	MEA 23-92-E Vol.II
<b>6451 SERIES:</b>		
UL & CUL	Access Control System Units	FILE #BP8819
MEA	City of New York Dept. of Buildings	MEA 23-92-E Vol.II
CSFM	California State Fire Marshal	#3774-1457:102

## 3000 Series Typical Installations

### OUTSWING DOORS



**3000 LHR**  
Single Lock For LHR Door



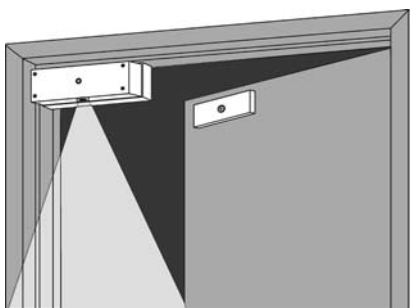
**3000 RHR**  
Single Lock For RHR Door



**3001**  
Single Lock Center Mounted On  
Double Door Without Center Mullion



**3002**  
Two 3000 Locks Mounted On Dual Fas-Trak  
For Double Door Without Center Mullion



**3006**  
Single Lock With Built-in Adjustable PIR  
For Immediate Free Egress

3000 Series Electromagnetic Locks have the unique ability to change hand to match door handing. The wiring compartment may be located on the left or right hand side of the lock assembly, ideally toward the center of the opening.

Handing may be specified at time of order or easily modified in the field.\*



**3000LHR**



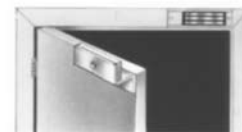
**3000RHR**

*\* Field modifications will result in the misorientation of the DynaLock logo. Replacement access covers are available from the factory at no charge.*

### INSWING DOORS



**3000TJ30 LH**  
Single Lock, Left Hand Inswing Door  
Mounted To Header Face With  
Adjustable Top Jamb "Z" Bracket



**3000TJ30 RH**  
Single Lock, Right Hand Inswing Door  
Mounted To Header Face With  
Adjustable Top Jamb "Z" Bracket



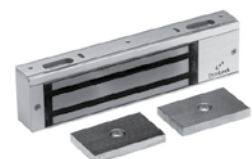
**3002TJ32**  
Double Lock, Inswing Door  
Center Mounted To Header Face With  
Adjustable Top Jamb "Z" Brackets

## 3000 Series 1500 Lb.



3000

Electromagnetic locks, surface mounted for outswing or inswing single or double doors.  
 Size: 1-1/2"D x 2-3/4"H x 11"L Single or 22"L Double  
 Multi-voltage field selectable 12/24 VAC/VDC  
 Current Draw: 0.42 Amps @ 12V Single / 0.84 Amps Double (Except 3006)  
 0.21 Amps @ 24V Single / 0.42 Amps Double (Except 3006)  
 0.5 Amps @ 12V / 0.3 Amps @ 24V (3006)



3001

MODEL	PRODUCT	FINISH	LIST PRICE
<b>3000</b>	Single Electromagnetic Lock Outswing	US28	443.00
<b>3001</b>	Single Electromagnetic Lock Pair Outswing	US28	491.00
<b>3002</b>	Double Electromagnetic Lock Outswing	US28	886.00
<b>3000TJ30</b>	Single Electromagnetic Lock Inswing	US28	538.00
<b>3001TJ31</b>	Single Electromagnetic Lock Pair Inswing	US28	584.00
<b>3002TJ32</b>	Double Electromagnetic Lock Pair Inswing	US28	1076.00
<b>3006</b>	Single Electromagnetic Lock with Built-in P.I.R.	US28	928.00

### OPTIONS

### LIST PRICE

• <b>DSM</b>	Door Status Switch - Signals door closed or ajar.	56.00
• <b>DSM2</b>	Door Status Switch - For the 3002 Series.	112.00
• <b>HSM</b>	High Security Monitor. Includes the following: Door Status Switch - Signals door closed or ajar. Dynastat Force Sensor - Indicates efficient magnetic bond.	89.00
• <b>HSM2</b>	High Security Monitor - For the 3002 Series.	178.00
• <b>VOP</b>	Value Option Package. Includes the following: Door Status Switch - Indicates door closed or ajar. Dynastat Force Sensor - Indicates efficient magnetic bond. Anti-Tamper Switch - Signals removal of wiring access cover. Relock Time Delay - Adjustable 1-80 Seconds.	155.00
• <b>VOP2</b>	Value Option Package - For the 3002 Series.	310.00
• <b>TD</b>	Relock Time Delay - Adjustable 1-80 Seconds.	66.00
• <b>CLH</b>	Custom Length Housing - See page 19.	
• <b>LC</b>	A 3000 Series coil assembly supplied in a 2000 Series multi-piece housing. Specify LC after any 3000 Series model number. Not available on 3006.	
• * <b>LCB</b>	Basic Lock Less Circuit Board	Single Deduct (20.00) Double Deduct (40.00)
• <b>LED</b>	Bi-Color LED - For local signaling of lock status. (Requires HSM or VOP Option. Not available on TJ models.)	36.00
• <b>LED2</b>	Bi-Color LED's (2) - For the 3002 Series. (Requires HSM2 or VOP2 Option. Not available on TJ models.)	72.00
• <b>LP</b>	Low Power Coil - 12V only @ 0.16 Amps (Single Lock) 12V only @ 0.2 Amps (3006)	11.00
• <b>LP2</b>	Low Power Coils - 12V only @ 0.32 Amps (Double Lock)	22.00
• <b>ATS</b>	Anti-Tamper Switch - Signals removal of wiring access cover (3006 only, all other models use VOP).	42.00
• <b>OFA</b>	Offset Armature - For narrow style storefront doors. (When ordered with lock)	N/C
• <b>SF</b>	Special Finish - Special anodized finishes see page 47.	

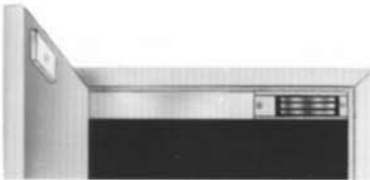
Notes: • DSM, HSM, VOP and LED options not available on the 3001 Series.  
 \* DSM, HSM, VOP, TD and LED options not available with the LCB option.  
 • Not available on 3006.

## Custom Length Housings - Horizontal and Vertical



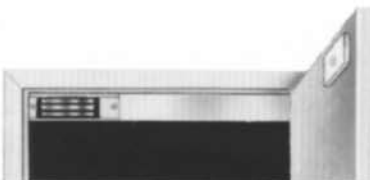
### 3700 - 3750

Vertical Custom Length Housing:  
Measure dimension floor to bottom of header stop then subtract 1/8". Housing is non-handed.



### 3500 - 3550

Horizontal Custom Length Housing:  
Measure dimension between vertical stops then subtract 1/8". Housing is handed - LHR shown.



### 3600 - 3650

Horizontal Custom Length Housing:  
Measure dimension between vertical stops then subtract 1/8". Housing is handed - RHR shown.

### Custom Length Housings

Custom Length Housings Series' 3500, 3600, 3700 and 3800 may be used with any full size 2000 or 3000 Series electromagnetic lock except the 3006 and 3101B Series. Custom Length Housings 3550, 3650, 3750 and 3850 are designed for use with 2511 and 2522 Mini electromagnetic locks only.

Custom Length Housings provide an unbroken sight line across the header or along a vertical jamb, for a less conspicuous installation. Installation is easy, standard locks are mounted in the conventional manner, a pre-cut track is installed in line with the lock and a "U" shaped channel is attached to the track, concealing both track and lock. Both track and housing ends may be field trimmed as required on all models except the 3700 and 3750.

MODEL	PRODUCT	LIST PRICE
<b>3500</b>	CLH - LHR 30" to 48" Single Horizontal Lock - Single Door. Full Size.	422.00
<b>3550</b>	CLH - LHR 30" to 48" Single Horizontal Lock - Single Door. Mini.	422.00
<b>3600</b>	CLH - RHR 30" to 48" Single Horizontal Lock - Single Door. Full Size.	422.00
<b>3650</b>	CLH - RHR 30" to 48" Single Horizontal Lock - Single Door. Mini.	422.00
<b>3700</b>	CLV to 96" Two Vertical Locks - Single Door. Full Size.	527.00
<b>3750</b>	CLV to 96" Two Vertical Locks - Single Door. Mini.	527.00
<b>3800</b>	CLH to 96" Two Horizontal Locks - Double Door. Full Size.	527.00
<b>3850</b>	CLH to 96" Two Horizontal Locks - Double Door. Mini.	527.00

### Note:

Pricing is for Housing only, locks must be ordered separately. Housings are furnished in US28 finish. For special finishes see page 47. Special lengths or modifications to standard housings are available - consult factory for price and delivery.



### 3800 - 3850

Horizontal Custom Length Housing:  
Measure dimension between vertical stops then subtract 1/8". Housing is non-handed and may be installed only when no center mullion is present.



3101B

## 3101B Series 1500 Lb. Delay Egress System

Delay egress electromagnetic locks, surface mounted for outswing single or double doors. Non-handed.

Sizes: 3"D x 2-3/4"H x 11"L (3101B)  
 3"D x 2-3/4"H x 22"L (3121B)  
 3"D x 2-3/4"H x 11"L ea. (3121B2)

Multi-voltage field selectable 12/24 VAC/VDC

Current Draw: 0.75 Amps @ 12V / 0.50 Amps @ 24V (3101B)  
 1.20 Amps @ 12V / 0.75 Amps @ 24V (3121B, 3121B2)



3121B

MODEL	PRODUCT	FINISH	LIST PRICE
<b>3101B</b>	Single Delay Egress Lock Outswing	US28	1108.00
<b>3121B</b>	Double Delay Egress Lock Pair Outswing	US28	1753.00
<b>3121B2</b>	Double Delay Egress Lock Pair Outswing Tandem Unit To Accommodate Center Mullion	US28	1778.00



3121B2

OPTIONS		LIST PRICE
<b>ATS</b>	Anti-Tamper Switch - Signals removal of the housing cover.	44.00
<b>ATS2</b>	Anti-Tamper Switch - For the 3121B and 3121B2	88.00
• <b>BPM</b>	Bypass Monitor - Signals bypass keyswitch activation	56.00
<b>DSM</b>	Door Status Switch - Signals door closed or ajar.	56.00
<b>DSM2</b>	Door Status Switch - For the 3121B and 3121B2.	112.00
<b>DYN</b>	Dynastat Force Sensor - Indicates efficient magnetic bond.	66.00
<b>DYN2</b>	Dynastat Force Sensor - For the 3121B and 3121B2.	132.00
<b>ETR</b>	Egress Sensor Omitted - For externally triggered egress.	N/C
<b>KSO</b>	Keyswitch Omitted - In favor of separate remote keyswitch. (Suggested for door heights over 8 ft.) See page 39.	19.00
<b>LP</b>	Low Power Coil - 12V only @ 0.40 Amps (Single Lock)	11.00
<b>LP2</b>	Low Power Coils - 12V only @ 0.72 Amps (Double lock)	22.00
<b>SF</b>	Special Finish - Standard finish US28. Special anodized finishes see page 47.	



CSFM

### BUILDING CODE SOFTWARE OPTIONS (FACTORY INSTALLED)

<b>BOCA</b>	For operation in compliance with BOCA Code.	N/C
<b>UBC</b>	For operation in compliance with UBC Code.	N/C
<b>CHGO</b>	For operation in compliance with Chicago Building Code.	N/C

Notes: • BPM option not available with the KSO option.

REPLACEMENT ITEMS	LIST PRICE
<b>BOCA, UBC Programmed microprocessor. Specify Software Version #.</b> (For field replacement)	95.00
<b>SIGN 15</b> Door sign only, 15 second delay verbiage.	32.00
<b>SIGN 30</b> Door sign only, 30 second delay verbiage.	32.00
<b>3101</b> Delay Egress Lock (Old style sensor).	1108.00
<b>3101-CHGO</b> Delay Egress Lock (Old style sensor, compliant with Chicago Building Code).	1108.00

# Delay Egress Controller



## 3101B-ES Series



3101B-ES



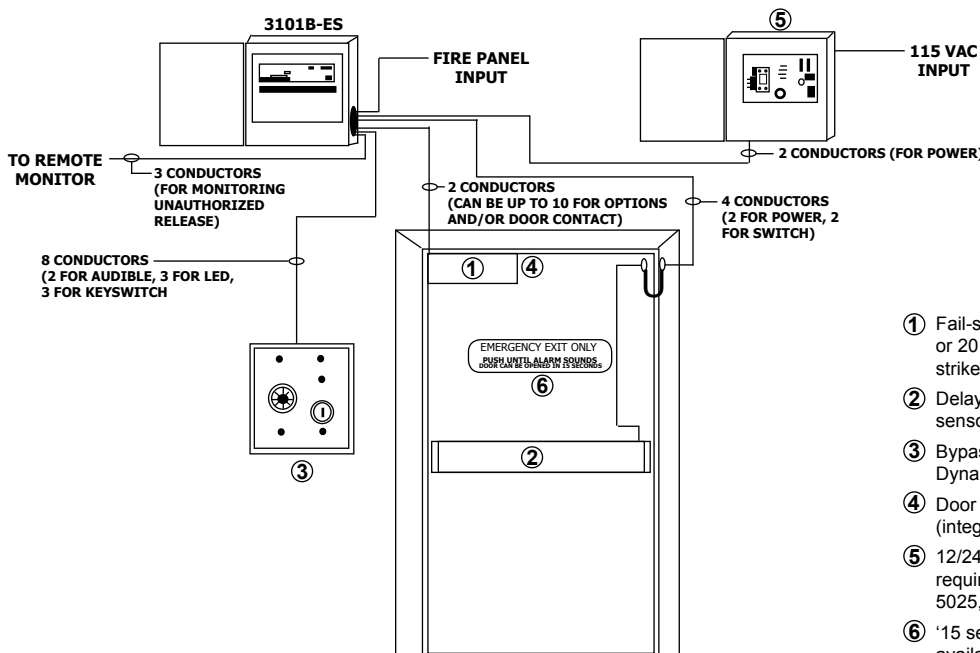
3101B-R

Delay egress electronics mounted in enclosure with screw terminal block for hook-up wiring. Typical applications include outside gates and in-swing doors requiring delay egress. Other components are necessary to function properly, see below for more information. BOCA software is available (consult factory).

MODEL	PRODUCT	LIST PRICE
<b>3101B-ES</b>	Delay Egress Controller mounted in 15"x12"x4" steel enclosure	698.00
<b>3101B-R</b>	Delay Egress Controller mounted in 12"x12"x6" weatherproof enclosure, with mounted alarm horn	957.00

## TYPICAL SYSTEM INSTALLATION

(additional components not included)

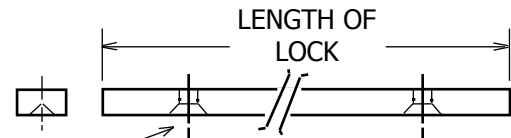
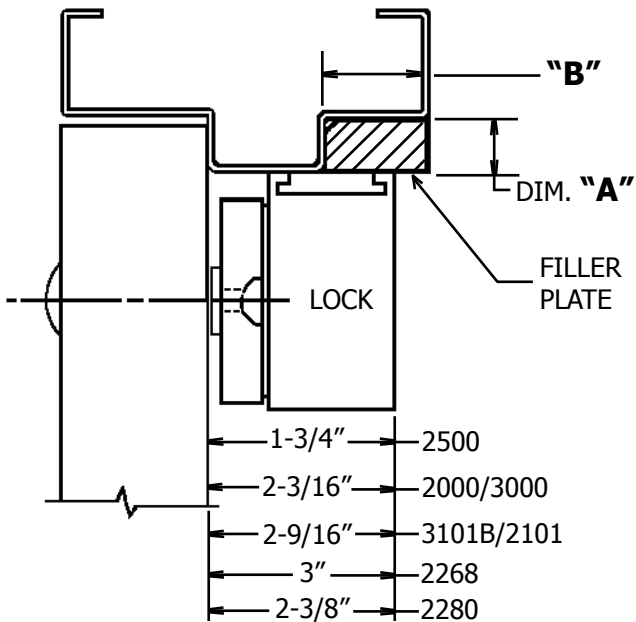


- ① Fail-safe electronic lock - e.g. DynaLock 3000xHSM or 2011xHSM maglock, DynaLock 1614S electric strike, electrified lockset (by others)
- ② Delay egress trigger device - e.g. DynaLock 6451 exit sensor bar.
- ③ Bypass/reset control and/or annunciator - e.g. DynaLock 6370 control & monitor station
- ④ Door position switch - for anti-tailgating feature (integrated with maglock models having HSM option)
- ⑤ 12/24 VDC/VAC power source, to match power requirements of the electronic lock - e.g. DynaLock 5025, 5500, 5600
- ⑥ '15 second' door sign included, '30 second' sign available - specify when ordering

## Filler & Spacer Plates Angle Brackets

### 4000 Series Filler Plates

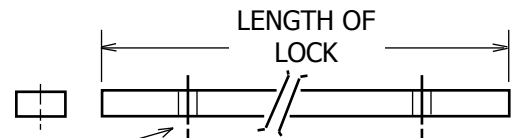
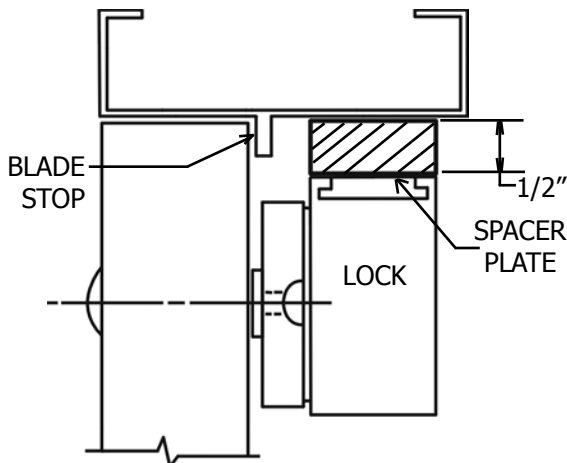
Filler plates facilitate the mounting of electromagnetic locks by extending the width of the door stop to provide an adequate mounting surface. Where required, select a Filler Plate equal in thickness to the height of the door stop (i.e. Dim. "A").



TYPICAL,  
#10 FHS FOR 1/8" & 1/4" THICKNESS  
#12 FHS FOR 3/8" & LARGER THICKNESS

### 4000 Series Spacer Plates

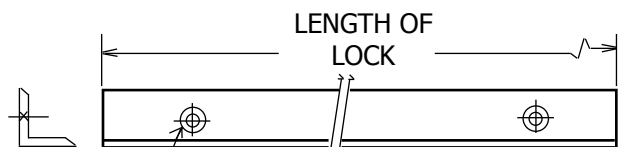
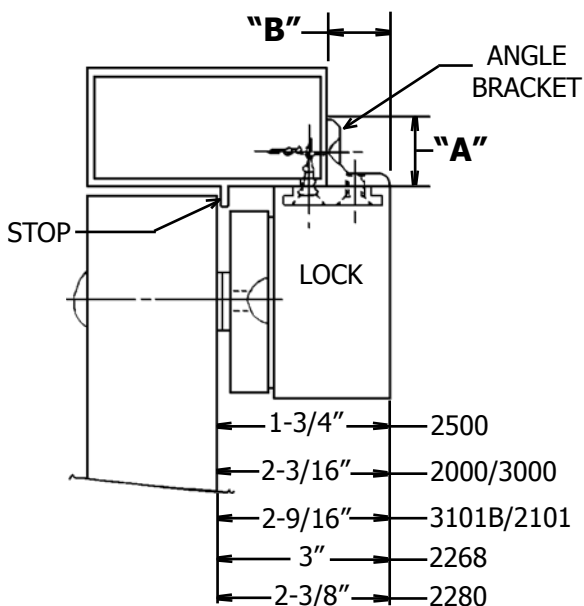
Spacer plates facilitate the mounting of electromagnetic locks by lowering the entire assembly 1/2", to clear a blade stop. All plates are pre-drilled for the corresponding lock series.



TYPICAL,  
COMES WITH CORRESPONDING MOUNTING  
HARDWARE. HOUSING SCREWS MOUNT  
THROUGH SPACER PLATE INTO FRAME.

### 4000 Series Angle Brackets

Angle Brackets facilitate the mounting of electromagnetic locks by extending the frame header area to provide an adequate mounting surface. Where required, select an Angle Bracket appropriate to accommodate the mounting footprint of the lock.



#10 FHS  
TYPICAL

## Filler Plates

### Single MagLocks

SIZE A x B	2000/3000/3101B (11")	2268-10/15 (14")	2511 (10-1/2")	2585 (8-1/2")	2280 (12-3/4")	LIST
1/8 x 1-1/4	#4011	#4014	#4010	#4085	#4080	\$36.00
1/4 x 1-1/4	#4111	#4114	#4110	#4185	#4180	\$40.00
3/8 x 1-1/4	#4211	#4214	#4210	#4285	#4280	\$44.00
1/2 x 1-1/4	#4311	#4314	#4310	#4385	#4380	\$46.00
5/8 x 1-1/4	#4411	#4414	#4410	#4485	#4480	\$49.00
3/4 x 1-1/4	#4441	#4415	#4430	#4486	#4448	\$53.00

### Double MagLocks

SIZE A x B	2022/3002/3121B (22")	2268-20 (25")	2522 (21")	2282 (25-1/2")	LIST	CUSTOM LENGTH L = LENGTH (Specify)
1/8 x 1-1/4	#4022	#4025	#4020	#4082	\$ 46.00	#4000-L \$42.00 Per. Ft.
1/4 x 1-1/4	#4122	#4125	#4120	#4182	\$ 51.00	#4100-L \$42.00 Per. Ft.
3/8 x 1-1/4	#4222	#4225	#4220	#4282	\$ 53.00	#4200-L \$42.00 Per. Ft.
1/2 x 1-1/4	#4322	#4325	#4320	#4382	\$ 55.00	#4300-L \$44.00 Per. Ft.
5/8 x 1-1/4	#4422	#4425	#4420	#4482	\$ 57.00	#4400-L \$44.00 Per. Ft.
3/4 x 1-1/4	#4442	#4426	#4450	#4449	\$ 63.00	#4440-L \$44.00 Per. Ft.

## Spacer Plates

2000/3000/3101B	2511	2522	2585	2268-10/15	2268-20	2280	2282
#4301	#4302	#4303	#4304	#4305	#4306	#4307	#4308
LIST \$65.00	LIST \$53.00	LIST \$61.00	LIST \$53.00	LIST \$53.00	LIST \$61.00	LIST \$53.00	LIST \$61.00

NOTE: For 2022, 3002, & 3121B order 2 Spacer Plates for each lock. All Spacer Plates are 1/2" thick and the same depth and length as the lock. Proper hardware packs included.

## Angle Brackets

### Single MagLocks

SIZE A x B	2000/3000/3101B (11")	2268-10/15 (14")	2511 (10-1/2")	2585 (8-1/2")	2280 (12-3/4")	LIST
1 x 1	#4511	#4514	#4510	#4585	#4580	\$49.00
1-1/2 x 1-1/2	#4611	#4614	#4610	#4685	#4680	\$55.00
1-1/2 x 2	#4711	#4714	#4710	#4785	#4780	\$71.00

### Double MagLocks

SIZE A x B	2022/3002/3121B (22")	2268-20 (25")	2522 (21")	2282 (25-1/2")	LIST	CUSTOM LENGTH L = LENGTH (Specify)
1 x 1	#4522	#4525	#4520	#4582	\$60.00	#4500-L \$42.00 Per. Ft
1-1/2 x 1-1/2	#4622	#4625	#4620	#4682	\$76.00	#4600-L \$42.00 Per. Ft
1-1/2 x 2	#4722	#4725	#4720	#4782	\$87.00	#4700-L \$42.00 Per. Ft





GLB

## Gate Lock Bracket

Adjustable gate lock brackets facilitate mounting to a variety of gate and post styles.

MODEL	PRODUCT	LIST PRICE
<b>GLB</b>	Two piece "Z" bracket for swinging gates	132.00
<b>GLB2</b>	Two "L" brackets for sliding gates	137.00

## Glass Door Brackets

Glass door brackets facilitate mounting an armature to a glass door with no top rail. Rubber and metal shims protect glass during installation. Brackets will fit 3/8", 1/2" or 3/4" thick doors.

MODEL	USE WITH	LIST PRICE
<b>4850</b>	2011, 2022*, 3000, 3002*	132.00
<b>4852</b>	2012, 3001 (pair)	264.00
<b>4854</b>	2511, 2522*	132.00
<b>4855</b>	2585	132.00
<b>4856</b>	2268-10, 2268-20*	132.00
<b>4858</b>	2268-15 (pair)	264.00
<b>4880</b>	2280, 2282*	132.00

\* For double locks order two

## Miscellaneous

MODEL	PRODUCT	LIST PRICE
<b>301000</b>	180 Piece Hardware Kit - An assortment of commonly used hardware for DynaLock electromagnetic locks. For 2000/3000 Series.	132.00
<b>301238</b>	Hardware Kit. For 3101/3101B Series.	121.00
<b>4920</b>	Metal Template for Model 2011.	145.00
<b>4930</b>	Metal Template for Model 3000.	252.00
<b>4940</b>	Metal Template for Model 3101B.	157.00
<b>4951</b>	Concrete/Wood Bracket for 2011/3000LC Size: 1-1/2"D x 1/2"H x 11"L	76.00

**REVISED  
12/4/08**

## Top Jamb Conversion Kits

Kits convert 2000, 3000 and 2280 Series locks to top jamb mounting applications on inswing doors. All kits include "Z" armature bracket(s) and mounting hardware. 2000 and 2280 kits also include "L" lock conversion bracket.

MODEL	PRODUCT	LIST PRICE
<b>TJ20</b>	Converts 2011 to 2011-TJ20	196.00
<b>TJ21</b>	Converts 2012 to 2012-TJ21	222.00
<b>TJ22</b>	Converts 2022 to 2022-TJ22	325.00
<b>TJ30</b>	Converts 3000 to 3000-TJ30	155.00
<b>TJ31</b>	Converts 3001 to 3001-TJ31	180.00
<b>TJ32</b>	Converts 3002 to 3002-TJ32	248.00
<b>TJ80</b>	Converts 2280 to 2280-TJ80	121.00
<b>TJ82</b>	Converts 2282 to 2282-TJ82	243.00

Note: See page 47 for available special finishes on above kits and brackets.



5025



NYC MEA  
#23-92-E

### Battery Back-Up Time

TOTAL CURRENT DRAW	BATTERY SIZE	
	4AH	7AH
<b>0.25A</b>	13.3hrs	23.3hrs
<b>0.5A</b>	6.6hrs	11.7hrs
<b>0.75A</b>	4.4hrs	7.8hrs
<b>1A</b>	3.3hrs	5.8hrs

NOTE: Estimated times shown.  
Battery condition, temperature, and other factors may affect performance.

### 5025 Series Single Zone

- Field selectable voltage output: 12VDC or 24VDC.
- Power output: 1 Amp @ 12/24VDC.
- Filtered and regulated voltage output.
- Built-in battery charging circuit.
- Choice of 4 or 7 Amp/Hour battery back-up capacity.
- May be connected to fire alarm with N.C. contacts.
- 15" x 12" x 4" hinge cover steel enclosure with knockouts.

MODEL	PRODUCT	LIST PRICE
<b>5025</b>	Power Supply with direct output and built-in battery charging circuit.	219.00

OPTIONS		LIST PRICE
<b>ATS</b>	Anti-Tamper Switch - Signals opening of enclosure cover.	44.00
<b>BBU1-4</b>	Battery Back-up - 4 AH @ 12VDC, 1 battery.	66.00
<b>BBU1-7</b>	Battery Back-up - 7 AH @ 12VDC, 1 battery.	95.00
<b>BBU2-4</b>	Battery Back-up - 4 AH @ 24VDC, 2 batteries.	132.00
<b>BBU2-7</b>	Battery Back-up - 7 AH @ 24VDC, 2 batteries.	190.00
<b>CAB</b>	Cable Kit - For third party batteries (Included at no charge with all BBU options).	21.00
<b>KLC</b>	Key Locked Cover - Includes two keys.	38.00
<b>PC</b>	Power Cord - Six foot, pre-connected, 3-wire line cord with ground.	32.00

### Power Supply Lock Capacity Chart

OUTPUT VOLTAGE	MAX LOAD	LOCKING DEVICE					
		1300	2511	2011/3000	2268-10	3006	3101B
<b>12VDC</b>	<b>1A</b>	1	1	2	1	1	1
<b>24VDC</b>	<b>1A</b>	2	3	4	2	3	1
<b>RATINGS PER LOCK</b>		0.85A@12V 0.45A@24V	0.50A@12V 0.25A@24V	0.42A@12V 0.21A@24V	0.68A@12V 0.35A@24V	0.50A@12V 0.30A@24V	0.75A@12V 0.50A@24V



5500



NYC MEA  
#23-92-E

## 5500 Series Multi Zone

- Field selectable voltage output: 12VDC or 24VDC.
- Power output: 3 Amps @ 12VDC / 2 Amps @ 24VDC.
- Filtered and regulated voltage output.
- Built-in battery charging circuit.
- Choice of 4 or 7 Amp/Hour battery back-up capacity.
- Fire alarm tie-in capability (with FAC option).
- 15" x 12" x 4" hinge cover steel enclosure with knockouts.
- Power on LED.
- Direct power output or choice of 5 or 10 zone distribution/expansion boards.

## Battery Back-Up Time

TOTAL CURRENT DRAW	BATTERY SIZE	
	4AH	7AH
0.25A	13.3hrs	23.3hrs
0.5A	6.6hrs	11.7hrs
0.75A	4.4hrs	7.8hrs
1A	3.3hrs	5.8hrs
1.25A	2.7hrs	4.7hrs
1.5A	2.2hrs	3.9hrs
1.75A	1.9hrs	3.3hrs
2A	1.7hrs	2.9hrs
2.25A	1.5hrs	2.6hrs
2.5A	1.3hrs	2.3hrs
2.75A	1.2hrs	2.1hrs
3A	1.1hrs	1.9hrs

NOTE: Estimated times shown.  
Battery condition, temperature, and other factors may affect performance.

MODEL	PRODUCT	LIST PRICE
5500	Power Supply with direct output and built-in battery charging circuit.	475.00

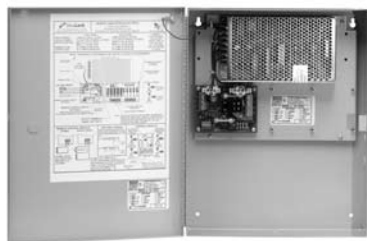
OPTIONS		LIST PRICE
ATS	Anti-Tamper Switch - Signals opening of enclosure cover.	44.00
BBU1-4	Battery Back-up - 4 AH @ 12VDC, 1 battery.	66.00
BBU1-7	Battery Back-up - 7 AH @ 12VDC, 1 battery.	95.00
BBU2-4	Battery Back-up - 4 AH @ 24VDC, 2 batteries.	132.00
BBU2-7	Battery Back-up - 7 AH @ 24VDC, 2 batteries.	190.00
CAB	Cable Kit - For third party batteries (Included at no charge with all BBU options).	21.00
CM	Control Module - Plug-in (Requires DB5 or DB10)	87.00
CMTD	Control Module w/Time Delay - Plug-in, 0-80 second relock delay (Requires DB5 or DB10).	99.00
DB5	Distribution Board - 5 zone fused, accepts up to 5 CM or CMTD modules.	103.00
DB10	Distribution Board - 10 zone fused, accepts up to 10 CM or CMTD modules.	131.00
FAC	Fire Alarm Module - Plug-in (One per supply).	63.00
FACMR	Fire Alarm Module with Manual Reset.	190.00
ILB	Interlock Logic Board - Four DPDT relays.	106.00
KLC	Key Locked Cover - Includes two keys.	38.00
PC	Power Cord - Six foot, pre-connected, 3-wire line cord with ground.	32.00

## Power Supply Lock Capacity Chart

OUTPUT VOLTAGE	MAX LOAD	LOCKING DEVICE					
		1300	2511	2011/3000	2268-10	3006	3101B
12VDC	3A	3	5	6	4	5	3
24VDC	2A	4	7	8	5	6	3

RATINGS PER LOCK	0.85A@12V 0.45A@24V	0.50A@12V 0.25A@24V	0.42A@12V 0.21A@24V	0.68A@12V 0.35A@24V	0.50A@12V 0.30A@24V	0.75A@12V 0.50A@24V
------------------	------------------------	------------------------	------------------------	------------------------	------------------------	------------------------



5600



NYC MEA  
#23-92-E

## 5600 Series Multi Zone

- Two available voltage outputs: 12VDC or 24VDC. Specify when ordering.
- Power output: 10 Amps @ 12VDC / 5 Amps @ 24VDC.
- Filtered and regulated voltage output.
- Built-in battery charging circuit.
- Choice of 4 or 7 Amp/Hour battery back-up capacity.
- Fire alarm tie-in capability (with FAC option).
- 15" x 12" x 4" hinge cover steel enclosure with knockouts.
- Power on LED.
- Direct power output or choice of 5 or 10 zone distribution/expansion boards.

## Battery Back-Up Time

TOTAL CURRENT DRAW	BATTERY SIZE	
	4AH	7AH
<b>1A</b>	3.3hrs	5.8hrs
<b>2A</b>	1.7hrs	2.9hrs
<b>3A</b>	1.1hrs	1.9hrs
<b>4A</b>	0.8hrs	1.4hrs
<b>5A</b>	0.7hrs	1.2hrs
<b>6A</b>	0.6hrs	1hr
<b>7A</b>	0.5hrs	0.8hrs
<b>8A</b>	0.4hrs	0.7hrs
<b>9A</b>	0.4hrs	0.6hrs
<b>10A</b>	0.3hrs	0.5hrs

NOTE: Estimated times shown.  
Battery condition, temperature, and other factors may affect performance.

MODEL	PRODUCT	LIST PRICE
<b>5600-12</b>	Power Supply, 12VDC @ 10Amps	659.00
<b>5600-24</b>	Power Supply, 24VDC @ 5 Amps	659.00

OPTIONS		LIST PRICE
<b>ATS</b>	Anti-Tamper Switch - Signals opening of enclosure cover.	44.00
<b>BBU1-4</b>	Battery Back-up - 4 AH @ 12VDC, 1 battery.	66.00
<b>BBU1-7</b>	Battery Back-up - 7 AH @ 12VDC, 1 battery.	95.00
<b>BBU2-4</b>	Battery Back-up - 4 AH @ 24VDC, 2 batteries.	132.00
<b>BBU2-7</b>	Battery Back-up - 7 AH @ 24VDC, 2 batteries.	190.00
<b>CAB</b>	Cable Kit - For third party batteries (Included at no charge with all BBU options).	21.00
<b>CM</b>	Control Module - Plug-in (Requires DB5 or DB10)	87.00
<b>CMTD</b>	Control Module w/Time Delay - Plug-in, 0-80 second relock delay (Requires DB5 or DB10).	99.00
<b>DB5</b>	Distribution Board - 5 zone fused, accepts up to 5 CM or CMTD modules.	103.00
<b>DB10</b>	Distribution Board - 10 zone fused, accepts up to 10 CM or CMTD modules.	131.00
<b>FAC</b>	Fire Alarm Module - Plug-in (One per supply).	63.00
<b>FACMR</b>	Fire Alarm Module with Manual Reset.	190.00
<b>ILB</b>	Interlock Logic Board - Four DPDT relays.	106.00
<b>KLC</b>	Key Locked Cover - Includes two keys.	38.00
<b>PC</b>	Power Cord - Six foot, pre-connected, 3-wire line cord with ground.	32.00

## Power Supply Lock Capacity Chart

OUTPUT VOLTAGE	MAX LOAD	LOCKING DEVICE					
		1300	2511	2011/3000	2268-10	3006	3101B
<b>12VDC</b>	<b>10A</b>	10	19	23	14	19	13
<b>24VDC</b>	<b>5A</b>	10	19	23	13	16	9
<b>RATINGS PER LOCK</b>		0.85A@12V 0.45A@24V	0.50A@12V 0.25A@24V	0.42A@12V 0.21A@24V	0.68A@12V 0.35A@24V	0.50A@12V 0.30A@24V	0.75A@12V 0.50A@24V



5224

### 5200 Series Open Transformers

MODEL	PRODUCT	LIST PRICE
<b>5212</b>	Open Transformer, 120/12 VAC, 2 Amp	74.00
<b>5213</b>	Open Transformer, 120/12 VDC, 2 Amp	95.00
<b>5224</b>	Open Transformer, 120/24 VAC, 2 Amp	74.00
<b>5225</b>	Open Transformer, 120/24 VDC, 2 Amp	95.00



5324

### 5300 Series Plug-In Transformers

MODEL	PRODUCT	LIST PRICE
<b>5312</b>	Plug-in Transformer, 120/12 VAC, 3 Amp	38.00
<b>5313</b>	Plug-in Transformer, 120/12 VDC, 3 Amp	51.00
<b>5324</b>	Plug-in Transformer, 120/24 VAC, 1.5 Amp	38.00
<b>5325</b>	Plug-in Transformer, 120/24 VDC, 1.5 Amp	51.00



5400

### 5400 Series Battery Back-Up Power Supply

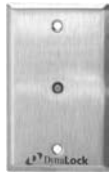
MODEL	PRODUCT	LIST PRICE
<b>5400</b>	Power Supply, 1 Amp @ 12VDC only, with 4 AH battery back-up and charger.	238.00

## Wire Size Selection Charts

Load Current At 24V							
WIRE RUN (FT)	0.25A	0.5A	0.75A	1A	1.25A	1.5A	2A
<b>100</b>	18	18	18	18	16	16	14
<b>150</b>	18	18	16	16	14	14	12
<b>200</b>	18	18	16	14	14	12	12
<b>250</b>	18	16	14	14	12	12	12
<b>300</b>	18	16	14	12	12	12	-
<b>400</b>	18	14	12	12	-	-	-
<b>500</b>	16	14	12	-	-	-	-
<b>750</b>	14	12	-	-	-	-	-
<b>1000</b>	14	-	-	-	-	-	-

Load Current At 12V							
WIRE RUN (FT)	0.25A	0.5A	0.75A	1A	1.25A	1.5A	2A
<b>100</b>	18	18	16	14	14	12	12
<b>150</b>	18	16	14	12	12	12	-
<b>200</b>	16	14	12	12	-	-	-
<b>250</b>	16	14	12	-	-	-	-
<b>300</b>	16	12	12	-	-	-	-
<b>400</b>	14	12	-	-	-	-	-
<b>500</b>	14	-	-	-	-	-	-
<b>750</b>	12	-	-	-	-	-	-
<b>1000</b>	-	-	-	-	-	-	-

## 6000 Series Monitor Panels



6010



6020

6000 Monitor Panels provide bi-color LED's, red/green, operating on 12 or 24 VDC. Mounted on brushed stainless steel US32D switch plate.

MODEL	PRODUCT	LIST PRICE
<b>6010</b>	One Bi-Color LED, Red/Green, 12/24VDC	64.00
<b>6020</b>	Two Bi-Color LED's, Red/Green, 12/24VDC	98.00

OPTIONS	LIST PRICE
<b>DBL-AUD</b>	Two Gang Plate with Audible Sounder - 1-28VDC. 24.00
<b>NR</b>	Narrow Plate - 1-3/4" wide, substitute. 6.00
<b>SF</b>	Special Finishes - Standard finish US32D. See page 47.

## 6000 Series Pushbuttons



6115



6125

6000 Series controls provide a popular selection of request to exit (REX) controls in multiple switching configurations. Monitoring is accomplished with optional illuminated or audible indicators. Standard finish - Brushed Stainless Steel US32D. Standard button color - Green. All switches SPDT contacts.



6135



6145

MODEL	PRODUCT	LIST PRICE
<b>6115M</b>	One Pushbutton, 1 Gang, Momentary	78.00
<b>6115A</b>	One Pushbutton, 1 Gang, Alternate Action	80.00
<b>6125M</b>	Two Pushbuttons, 1 Gang, Momentary	153.00
<b>6125A</b>	Two Pushbuttons, 1 Gang, Alternate Action	158.00
<b>6135M</b>	Three Pushbuttons, 1 Gang, Momentary	208.00
<b>6135A</b>	Three Pushbuttons, 1 Gang, Alternate Action	214.00
<b>6145M</b>	Four Pushbuttons, 2 Gang, Momentary	273.00
<b>6145A</b>	Four Pushbuttons, 2 Gang, Alternate Action	285.00

OPTIONS	LIST PRICE
<b>AUD</b>	Audible Sounder - 1-28VDC (Requires DBL option). 18.00
<b>DBL</b>	Two Gang Plate - 4-9/16" wide, for options. 6.00
<b>ILM</b>	Illuminated Pushbutton - Specify 12 or 24VDC (per button). 10.00
<b>LED</b>	Bi-Color LED - Red/Green, 12/24VDC. 32.00
<b>NR</b>	Narrow Plate - 1-3/4" wide, substitute. 6.00
<b>P2</b>	Additional set of SPDT contacts (per button). 40.00
<b>SF</b>	Special Finishes - See page 47.
<b>WPC</b>	Weather Proof Cover - For single gang 6115 only. 16.00
<b>ATS</b>	Anti-Tamper Switch 42.00

## 6000 Series Pushbuttons

6000 Series controls provide a popular selection of request to exit (REX) controls in multiple switching configurations. Monitoring is accomplished with optional illuminated or audible indicators.

Standard finish - Brushed Stainless Steel US32D.

Standard button color - Red (green available).



**1-5/8" Dia.  
Plastic  
Red Button**



**1-5/8" Dia.  
Plastic  
Red Button  
Marked  
EXIT**

MODEL	PRODUCT	LIST PRICE
<b>6210</b>	Palm Switch, A-A, SPDT	126.00
<b>6220</b>	Palm Switch, A-A, DPDT	176.00
<b>6230</b>	Palm Switch, MOM, FORM Z	82.00
<b>6211</b>	Palm Switch, marked "EXIT", A-A, SPDT	130.00
<b>6221</b>	Palm Switch, marked "EXIT", A-A, DPDT	180.00
<b>6231</b>	Palm Switch, marked "EXIT", MOM, FORM Z	86.00

OPTIONS		LIST PRICE
<b>AUD</b>	Audible Sounder - 1-28VDC (Requires DBL option).	18.00
<b>DBL</b>	Two Gang Plate - 4-9/16" wide, for options.	6.00
<b>LED</b>	Bi-Color LED - Red/Green, 12/24VDC.	32.00
<b>NR</b>	Narrow Plate - 1-3/4" wide, substitute.	6.00
<b>SF</b>	Special Finishes - See page 47.	
<b>GRN</b>	Green Button	N/C
<b>ATS</b>	Anti-Tamper Switch	42.00
<b>CB-NO</b>	Contact Block - 6230 & 6231 may have one additional set of momentary NO or NC contacts.	12.00
<b>CB-NC</b>		

### NOTES:

- A-A** Alternate Action (Maintained)
- MOM** Momentary Action
- SPDT** Single Pole Double Throw
- DPDT** Double Pole Double Throw
- FORM Z** Single Pole Double Throw, Double Break



## 6000 Series Pushbuttons



**6270**  
2" Square  
Plastic  
Green Button  
Black EXIT  
Illuminated



**6275**  
3/8" Dia.  
SST Button  
With Pneumatic  
Time Delay



**6280,6282**  
1" Dia.  
SST Button  
Heavy Duty  
Vandal Resistant



**6290**  
1-5/8" Dia.  
Plastic  
Red Button Marked  
EXIT  
NFPA 101 Code



**6291**  
1-5/8" Dia.  
Plastic Red  
Button Marked  
UNLOCK DOOR  
Denver Code



**6300**  
1-3/4" Dia.  
Audible  
90 dB @ 30 cm

MODEL	PRODUCT	LIST PRICE
<b>6270</b>	Pushbutton, 2" Sq. MOM, SPDT, 12/24VDC	90.00
<b>6275</b>	Pushbutton, 3/8" Dia. 1-60 Sec. PTD, FORM Z	276.00
<b>6280</b>	Pushbutton, 1" Dia. SST MOM, SPDT	160.00
<b>6282</b>	Pushbutton, 1" Dia. SST A-A, SPDT	164.00
<b>6290</b>	Palm Switch, 1-5/8" Dia. FORM Z, PTD 30 Sec. Min., NFPA 101, 2003 Paragraph 7-2.1.6.2	357.00
<b>6291</b>	Palm Switch, 1-5/8" Dia. FORM Z, PTD 30 Sec. Min., City of Denver Policy Statement 1994, Paragraph 4	357.00
<b>6300</b>	Audible, 6-28VDC	50.00

OPTIONS	LIST PRICE
<b>LED</b>	Bi-Color LED - Red/Green, 12/24VDC 32.00
<b>NR</b>	Narrow Plate - 1-3/4" wide. Available on 6275, 6280, 6282, and 6290 only. 6.00
<b>SF</b>	Special Finishes - Standard finish US32D. See page 47.
<b>ATS</b>	Anti-Tamper Switch 42.00

### NOTES:

- A-A** Alternate Action (Maintained)
- MOM** Momentary Action
- SPDT** Single Pole Double Throw
- DPDT** Double Pole Double Throw
- FORM Z** Single Pole Double Throw, Double Break
- PTD** Pneumatic Time Delay
- SST** Stainless Steel







6171



6172



6173



6174



6175



6176

## 6170 Series Weatherproof Pushbutton

Commercial grade weatherproof pushbutton. Button is 3/4" diameter white thermoplastic raised dome, rated IP68 water-tight (up to 1 meter), IP64 moisture-proof, and IP64 dust-tight. Single gang plate, includes weatherproof faceplate gasket and tamper-resistant faceplate screws. Green LED backlit button on all models, field selectable 12/24 VDC. All models are momentary-action SPDT-Double Break (FORM Z)

Contact Rating: 3A @ 115VAC

Operating temperature rating: -67°F to +185°F



MODEL	PRODUCT	LIST PRICE
6171	Blank Faceplate	140.00
6172	Faceplate Silkscreened "EXIT"	150.00
6173	Faceplate Silkscreened "EXIT/SALIDA"	150.00
6174	Faceplate Silkscreened "EXIT/SORTIE"	150.00
6175	Faceplate Silkscreened "PUSH TO UNLOCK"	150.00
6176	Faceplate Silkscreened "PUSH TO OPEN"	150.00

## OPTIONS

BBX	Weatherproof Surface Back Box - 2 <sup>5</sup> / <sub>8</sub> " deep	40.00
CSF	Custom Silkscreened Faceplate - Consult factory for price and delivery	
SF	Special Finish Faceplate - US32D standard, see page 47 for other finishes	
ATS	Anti-Tamper Switch	42.00

ALL MODELS HAVE WHITE BUTTON  
WITH GREEN LED BACKLIGHT ILLUMINATED



EX  
Illuminated Signage



## 6500 Series High Visibility Pushplates

6500 Series Pushplates are double-gang, heavy duty egress controls machined from solid aluminum featuring electroluminescent illuminated signage. Multiple switching configurations and finishes are available. All models are low profile (13/16" projection from wall) and tamper resistant. *Consult factory for custom signage.*  
Standard finish - Satin Aluminum US28.  
Current Draw: 30mA @ 12 or 24VDC  
PTD Contact Rating: 10A @ 125VAC / All Others: 6A @ 125VAC

### MODEL SELECTION

**65 - XX - XXX - XX - \***

↓  
**Specify Operating Voltage**

**12** 12 VDC  
**24** 24 VDC

↓  
**Specify Switch Format**

**MO** MOMENTARY SPDT SWITCH  
**AA** ALTERNATE ACTION SPDT SWITCH  
**PTD** PNEUMATIC TIME DELAY  
2-60 SEC, SPDT FORM Z SWITCH  
**(ADD \$170.00 TO BASE PRICE)**



↓  
**Specify Signage**

**EX** "EXIT"  
**PE** "PUSH TO EXIT"  
**OP** "OPEN"  
**PO** "PUSH TO OPEN"  
**SA** "SALIDA" SPANISH (EXIT)  
**SO** "SORTIE" FRENCH (EXIT)  
**ES** "EXIT/SALIDA" ENGLISH & SPANISH  
**EF** "EXIT/SORTIE" ENGLISH & FRENCH  
**AB** "ABRA" SPANISH (OPEN)  
**OU** "OUVREZ" FRENCH (OPEN)  
**OA** "OPEN/ABRA" ENGLISH & SPANISH  
**OZ** "OPEN/OUVREZ" ENGLISH & FRENCH

↓  
**6500 Series**  
**BASIC LIST PRICE \$320.00** (Add for PTD & options.)

### \* OPTIONS

### LIST PRICE

OPTION	DESCRIPTION	LIST PRICE
<b>DP</b>	DPDT Switch. Not available with PTD option.	10.00
<b>SF</b>	Special Finishes - US28 standard. US3, US4, US10, US13, US10B, US19, US26 available.	70.00
<b>CS</b>	Custom Signage - Please consult factory.	

Lamp illuminates indefinitely. Optimal brightness up to 10,000 hours (continuous usage). Field replacements are available, consult factory.



**Single Gang**



**Single Gang Recessed**



**Narrow**



**Narrow Recessed**

## 6700/6800 Series Pushplates

6700 & 6800 Series Pushplates are heavy duty egress controls machined from solid aluminum with engraved "PUSH TO EXIT" signage. Multiple switching configurations and finishes are available. Narrow recessed models are specifically designed for installation in aluminum store front frames, requiring minimal cut-out/preparation. All momentary models feature "all active" operation. Consult factory for special engraving.

Standard finish - Satin Aluminum US28

PTD Contact Rating: 10A @ 125VAC

All Others: 6A @ 125VAC

MODEL	PRODUCT	LIST PRICE
<b>6700</b>	Single Gang 1-60 Sec. PTD, FORM Z	366.00
<b>6710</b>	Single Gang A-A, SPDT	120.00
<b>6720</b>	Single Gang A-A, DPDT	158.00
<b>6730</b>	Single Gang MOM, SPDT	120.00
<b>6740</b>	Single Gang MOM, DPDT	158.00
<b>6750</b>	Single Gang, Recessed 1-60 Sec. PTD, FORM Z	380.00
<b>6751</b>	Single Gang, Recessed A-A, SPDT	145.00
<b>6752</b>	Single Gang, Recessed A-A, DPDT	185.00
<b>6753</b>	Single Gang, Recessed MOM, SPDT	140.00
<b>6754</b>	Single Gang, Recessed MOM, DPDT	180.00
<b>6800</b>	Narrow 1-60 Sec. PTD, FORM Z	366.00
<b>6810</b>	Narrow A-A, SPDT	116.00
<b>6820</b>	Narrow A-A, DPDT	152.00
<b>6830</b>	Narrow MOM, SPDT	116.00
<b>6840</b>	Narrow MOM, DPDT	152.00
<b>6850</b>	Narrow, Recessed 1-60 Sec. PTD, FORM Z	375.00
<b>6851</b>	Narrow, Recessed A-A, SPDT	140.00
<b>6852</b>	Narrow, Recessed A-A, DPDT	180.00
<b>6853</b>	Narrow, Recessed MOM, SPDT	135.00
<b>6854</b>	Narrow, Recessed MOM, DPDT	175.00

OPTIONS	LIST PRICE
<b>SF</b> Special Finishes - US28 standard. US3, US4, US10, US13, US10B, US19, US26 available.	70.00

### NOTES:

**A-A** Alternate Action (Maintained)

**MOM** Momentary Action

**SPDT** Single Pole Double Throw

**DPDT** Double Pole Double Throw

**PTD** Pneumatic Time Delay

**FORM Z** Single Pole Double Throw, Double Break





**Single Gang**



**Single Gang Recessed**



**Narrow**



**Narrow Recessed**

## 6705/6805 Series Handicapped Pushplates

6705 & 6805 Series Handicapped Pushplates are heavy duty egress controls machined from solid aluminum with blue engraved handicapped symbol. Multiple switching configurations and finishes are available. Narrow recessed models are specifically designed for installation in aluminum store front frames, requiring minimal cut-out/preparation. All momentary models feature "all active" operation. Consult factory for special engraving. Standard finish - Satin Aluminum US28  
PTD Contact Rating: 10A @ 125VAC  
All Others: 6A @ 125VAC

MODEL	PRODUCT	LIST PRICE
<b>6705</b>	Single Gang 1-60 Sec. PTD, FORM Z	355.00
<b>6715</b>	Single Gang A-A, SPDT	120.00
<b>6725</b>	Single Gang A-A, DPDT	160.00
<b>6735</b>	Single Gang MOM, SPDT	115.00
<b>6745</b>	Single Gang MOM, DPDT	155.00
<b>6755</b>	Single Gang, Recessed 1-60 Sec. PTD, FORM Z	380.00
<b>6765</b>	Single Gang, Recessed A-A, SPDT	145.00
<b>6775</b>	Single Gang, Recessed A-A, DPDT	185.00
<b>6785</b>	Single Gang, Recessed MOM, SPDT	140.00
<b>6795</b>	Single Gang, Recessed MOM, DPDT	180.00
<b>6805</b>	Narrow 1-60 Sec. PTD, FORM Z	350.00
<b>6815</b>	Narrow A-A, SPDT	115.00
<b>6825</b>	Narrow A-A, DPDT	155.00
<b>6835</b>	Narrow MOM, SPDT	110.00
<b>6845</b>	Narrow MOM, DPDT	150.00
<b>6855</b>	Narrow, Recessed 1-60 Sec. PTD, FORM Z	375.00
<b>6865</b>	Narrow, Recessed A-A, SPDT	140.00
<b>6875</b>	Narrow, Recessed A-A, DPDT	180.00
<b>6885</b>	Narrow, Recessed MOM, SPDT	135.00
<b>6895</b>	Narrow, Recessed MOM, DPDT	175.00

OPTIONS	LIST PRICE
<b>SF</b> Special Finishes - US28 standard. US3, US4, US10, US13, US10B, US19, US26 available.	70.00

### NOTES:

- A-A** Alternate Action (Maintained)
- MOM** Momentary Action
- SPDT** Single Pole Double Throw
- DPDT** Double Pole Double Throw
- PTD** Pneumatic Time Delay
- FORM Z** Single Pole Double Throw, Double Break





**Double Gang**



**Double Gang  
Recessed**

## 6901 Series Pushplates

DynaLock Specialty Exit Controls provide “out of the box” solutions to meet specific codes or mandates governing egress requirements within a facility, municipality or region.

6901 Series are tamper resistant, heavy duty double gang pushplates machined from solid aluminum. All models are anodized red with “PUSH TO EXIT” signage engraved. Lettering is white with 1/8” stroke and 1” height (minimum). All momentary models feature “all active” operation.

PTD Contact Rating: 10A @ 125VAC / UL  
All Others: 6A @ 125VAC / UL

MODEL	PRODUCT	LIST PRICE
<b>6901</b>	Double Gang 1-60 Sec. PTD, FORM Z	397.00
<b>6911</b>	Double Gang A-A, SPDT	215.00
<b>6921</b>	Double Gang A-A, DPDT	240.00
<b>6931</b>	Double Gang MOM, SPDT	210.00
<b>6941</b>	Double Gang MOM, DPDT	235.00
<b>6951</b>	Double Gang, Recessed 1-60 Sec. PTD, FORM Z	422.00
<b>6961</b>	Double Gang, Recessed A-A, SPDT	240.00
<b>6971</b>	Double Gang, Recessed A-A, DPDT	265.00
<b>6981</b>	Double Gang, Recessed MOM, SPDT	235.00
<b>6991</b>	Double Gang, Recessed MOM, DPDT	260.00

### NOTES:

- A-A** Alternate Action (Maintained)
- MOM** Momentary Action
- SPDT** Single Pole Double Throw
- DPDT** Double Pole Double Throw
- PTD** Pneumatic Time Delay
- FORM Z** Single Pole Double Throw, Double Break





### 6335 Series Pushbuttons

Station controls furnished in compact, surface-mounted enclosures. Designed to be concealed under a desk or in a similar installation. Dimensions: 1"H x 2-1/4"W x 2"D

MODEL	PRODUCT	LIST PRICE
<b>6335</b>	(1) Pushbutton, SPDT Maintained Contact	112.00
<b>6336</b>	(1) Pushbutton, SPDT Momentary Contact	109.00
<b>6337</b>	(2) Pushbuttons, SPDT Maintained Contacts	150.00
<b>6338</b>	(2) Pushbuttons, SPDT Momentary Contacts	132.00

OPTIONS		LIST PRICE
<b>P2</b>	Upgrade to DPDT contacts (6335/6336 only).	30.00
<b>P4</b>	Upgrade to DPDT contacts (6337/6338 only).	60.00
<b>ILM</b>	Illuminated Pushbutton - Specify 12 or 24VDC (6335/6336 only).	14.00
<b>ILM2</b>	Illuminated Pushbuttons - Specify 12 or 24VDC (6337/6338 only).	28.00



### 6350 Series Monitor Station

Four zone monitor station is designed to work in conjunction with up to four Series 3101B delay egress systems. Each 6350 is mounted on a standard two gang plate and includes four bi-color LED's and one sounder with mute switch, to visually and audibly signal delay egress status at a remote location. For full functioning all locks connected to the 6350 require the Dynastat option.

MODEL	PRODUCT	LIST PRICE
<b>6350</b>	Four Zone Monitor Station for Delay Egress Systems. Furnished with a 5312 Transformer.	400.00

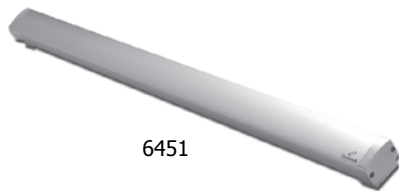


### 6370 Series Control & Monitor Station

Single zone control & monitor station is designed for use with a separate, component style delay egress system. It includes audible and visual monitoring of lock and delay egress status. Reset and release functions are provided by keyswitch. Each 6370 is mounted on a standard two gang plate. System requirements are outlined on page 21.

MODEL	PRODUCT	LIST PRICE
<b>6370</b>	Single Zone Control & Monitor Station for Delay Egress Systems.	160.00

## 6451 Series Exit Sensor Bar



6451



NYC MEA  
#23-92-E

CSFM



PTE OPTION

Non-latching, non-handed exit sensor bar for use with electromagnetic lock to provide immediate, single-motion egress. Non-mechanical optical sensors require no adjustment and provide DPDT output contacts. A mechanical switch is also built-in as a redundant back-up release. Available in three standard lengths, easily cut in the field for custom width doors. Minimum travel, positive stops and metal end caps provide true vandal and wear resistance. Furnished with power transfer cable from door to frame.

Not to be used with electric deadbolt locks.

Current Draw: 0.100 Amps @ 12/24 VDC/VAC

Relay: DPDT / 5 Amps @ 30 Volts

MODEL	PRODUCT	LIST PRICE
<b>6451-36</b>	Exit Sensor Bar, For 36" Door, US28 Finish	380.00
<b>6451-42</b>	Exit Sensor Bar, For 42" Door, US28 Finish	380.00
<b>6451-48</b>	Exit Sensor Bar, For 48" Door, US28 Finish	380.00

NOTE: All models for doors with 5/8" or less frame stop.

Actual bar length is 2" less than width of door x 2-3/8"H x 2-7/16"D

Distance between mounting holes is 2-3/4" less than width of door.

OPTIONS	LIST PRICE
<b>CAB64</b>	Cable Kit - 16 ft., 8 cond., to facilitate wiring. 38.00
<b>TSB</b>	Mounting pads modified to match Securitron® TSB mounting footprint. 17.00
<b>SF</b>	Special Finishes - Standard finish US28. Also available in anodized dark bronze (US10B) or satin brass (US4), to match door trim. 40.00
<b>WDK</b>	Wood Door Kit - (4) #10 sex nuts and bolts for wood doors 1-3/4" to 2-1/4" thick. 17.00
<b>DMB</b>	Dummy Bar - Less circuit boards. Deduct (70.00)
<b>PTE</b>	PUSH TO EXIT Engraved Signage - 1" high, 1/8" stroke, red filled. 60.00
<b>CLC</b>	Custom Length Cut - Specify desired overall finished length of Exit Sensor Bar.* 21.00

\* TIP: To calculate Custom Length Cut, subtract 3/4" from the distance between door stops (D).





7001xCYL



7001xNRxCYL



7050

## 7000 Series Keyswitches

Keyswitches may be used to control electric locks, shunt or activate security panels, consoles or any similar requirements. The assembly is supplied with face plate, bracketry, cylinder locknut and one or two switches depending on model ordered. The user typically supplies the mortise cylinder and cam when master keying a system. Models 7050 & 7051 do not require a cylinder.

Switch contacts rated 6 Amps @ 125VAC and are available momentary or maintained, SPDT or DPDT. Switch assembly requires 1-1/2" depth clearance and is shipped on single, double or narrow gang plates. Standard Finish: US32D

Cylinder Requirements: 1-1/8" or 1-1/4" Mortise Cylinder with "bat" type cam.

MODEL	PRODUCT	LIST PRICE
<b>7001</b>	Maintained, (1) SPDT	127.00
<b>7002</b>	Momentary, (1) SPDT	116.00
<b>7003</b>	Maintained, (2) SPDT	155.00
<b>7004</b>	Momentary, (2) SPDT	133.00
<b>7005</b>	Momentary/Maintained, 1 Each SPDT	143.00
<b>7021</b>	Maintained, (1) DPDT	154.00
<b>7022</b>	Momentary, (1) DPDT	143.00
<b>7023</b>	Maintained, (2) DPDT	199.00
<b>7024</b>	Momentary, (2) DPDT	177.00
<b>7025</b>	Momentary/Maintained, 1 Each DPDT	184.00
<b>7035</b>	Elec. Time Delay, 0-60 Sec. SPDT, 2 Gang	266.00
<b>7050</b>	3101B Type, Momentary/Maintained	89.00
<b>7051</b>	3101B Type, Momentary/Momentary	127.00

OPTIONS	LIST PRICE
* <b>ATS</b>	Anti-Tamper Switch 42.00
◦ <b>AUD</b>	Audible Sounder - 1-28VDC (Requires DBL option). 18.00
• <b>CYL</b>	Mortise Cylinder - 1-1/4" long w/cam, 2 keys. 38.00
<b>DBL</b>	Two Gang Plate - 4-9/16" wide, for options. 6.00
<b>KEY</b>	Key, Extra (Order with CYL option) 6.00
<b>LED</b>	Bi-Color LED - Red/Green, 12/24VDC. 32.00
<b>NR</b>	Narrow Plate - 1-3/4" wide, substitute. 6.00
<b>PB</b>	Pushbutton - 6115 type (Requires DBL option). 59.00
<b>SF</b>	Special Finishes - Standard finish US32D. See page 47.
◦ <b>WPC</b>	Weatherproof Cover - Single gang only. 16.00

Notes: \* Not available with NR option.  
 ◦ Not available on 7035.  
 • All cylinders keyed alike.



## 7075 Series Break Glass Exit Stations



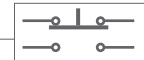
7075

Break glass assembly provides auxiliary method of releasing egress doors in an emergency situation. The assembly may be ordered in three versions: standard, standard with LED indicator or standard with audible.

Size: 6-3/4" x 4-1/2"

Contacts: SPDT-DB (FORM Z), MOM rated 6 Amps @ 125VAC

Furnished with 5 spare glass lenses.



MODEL	PRODUCT	LIST PRICE
<b>7075</b>	Break Glass, Standard	255.00
<b>7076</b>	Break Glass, with Bi-Color LED, Red/Green, 12/24VDC	289.00
<b>7077</b>	Break Glass, with Audible Sounder, 1-28VDC, 1-28VDC	300.00
<b>7078</b>	Spare Contact Block, SPDT	65.00
<b>7079</b>	Spare Lenses, 5 Pk.	44.00

## 7080 Series Adjustable Time Delay Module



7080

Compact, in-line time delay module provides an adjustable relock delay for an electric lock controlled by a momentary normally-closed access/egress device.

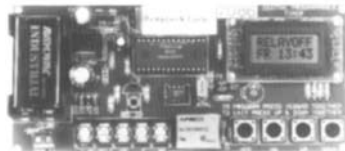
Size: 5/8"W x 2"L x 9/16"D

Input Power: 12-30 VAC/VDC, Contacts: SPDT rated 1 Amp @ 30VDC

Delay Adjustment Range: 0-60 Seconds

MODEL	PRODUCT	LIST PRICE
<b>7080</b>	Adjustable Time Delay Module	69.00

## 7086 Series Programmable Digital Timer



7086

365 day/24 hour digital timer provides automated control of electric locks.

Programmable for up to 50 weekly/daily events and 10 holidays. Operates on 12 or 24 VAC/VDC @ 0.05A.

Size: 3"W x 5.25"L x 1"D

Contacts: SPDT rated 10 Amps @ 120VAC

MODEL	PRODUCT	LIST PRICE
<b>7086</b>	Programmable Digital Timer	354.00

## 7088 Prewired Rectifier



7088

MODEL	PRODUCT	LIST PRICE
<b>7088</b>	1 Amp Prewired Rectifier Module	21.00

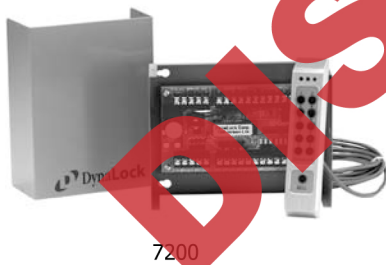


## 7200 Series Digital Keypad System

Series 7200 Digital Keypad fits narrow stile aluminum entrances and is designed to provide maximum resistance to weather and attack. 11 active buttons are available for code entry. The 11th button may be programmed for bell, light or call activation. All codes and programming are entered at the keypad and are acknowledged by the appropriate LED and audible beep. The complete system includes the keypad, 16 ft. prewired cable, controller, all fasteners, mounting and programming instructions.

MODEL	PRODUCT	LIST PRICE
<b>7200</b>	Digital Keypad System - Includes controller and keypad.	388.00

OPTIONS		LIST PRICE
<b>EM</b>	Expanded Memory - To 120 codes.	89.00
<b>KP</b>	Keypad - Adds additional keypad.	177.00
<b>PSC</b>	Controller Power Supply Upgrade - Adds a 5025 Power Supply, into which the keypad controller is mounted.	199.00
<b>SF</b>	Special Finishes - Keypad only. Standard finish US28. See page 47.	



# Stand Alone Digital Keypads



**MODEL 7300**



**MODEL 7350**



**MODEL 7400**



**MODEL 7450**

## 7300/7350 Stand Alone Digital Keypads

These rugged, vandal resistant all metal piezoelectric keypads are designed for access solutions in harsh industrial, institutional and commercial environments. A user-friendly setup menu makes programming and use a very simple task for end-user's. Both feature audio and visual recognition as well as multiple inputs and outputs for a wide array of functions, auxiliary modes and 500 user codes with three access levels for each. Includes keypad, installation kit, 3 foot wiring cable and a self-adhesive mounting template.

MODEL	PRODUCT	LIST PRICE
<b>7300</b>	Single Gang Box Mounting-3x4 Matrix Keypad	300.00
<b>7350</b>	Narrow Mullion Design-2x6 Matrix Keypad	285.00

## 7400/7450 Stand Alone Digital Keypads

These durable, high impact, polycarbonate keypads are designed for access solutions for indoor and outdoor residential, commercial and institutional applications. A user-friendly setup menu makes programming and use very simple for end-user's. Both feature audio and visual recognition, red backlit keys for enhanced visibility as well as multiple inputs and outputs for a wide array of functions, auxiliary modes and 500 user codes with three access levels for each. Includes keypad, installation kit, 3 foot wiring cable and a self-adhesive mounting template.

MODEL	PRODUCT	LIST PRICE
<b>7400</b>	Single Gang Box Mounting-3x4 Matrix Keypad	150.00
<b>7450</b>	Narrow Mullion Design-2x6 Matrix Keypad	142.00

## Common Features - All Models

- 500 User Pin Code Capacity
- 4 to 8 Digit Programmable Pin Codes
- 3 User Levels, 3 Access Levels Per User
- Waterproof and Dust Resistant (Meets IP65)
- Two SPDT Form "C" Relay Outputs
- REX and Auxiliary Inputs
- Two Tri-Color LED and Audible Indicators
- Built-in Optical Back Tamper Sensor
- Operates on 12-24VDC or 16-24VAC Input
- Ten Programmable Auxiliary Modes
- Lifetime Warranty

# Standard Slope Front Consoles

## 8000SF Series Standard Slope Front Consoles



8006SF

Series 8000SF Consoles are designed to control and monitor most any type electric lock and may be ordered with up to 12 stations. An external source of power similar to DynaLock power supplies shown on pages 25 thru 27 is required. Slope front consoles larger than 12 stations or that may have an internal power source are considered custom. Refer to the custom console section pages 43 and 44.

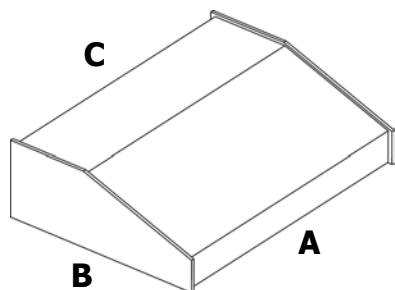
8000SF Consoles are furnished in a black front metal panel with blue metal sides. Available in 4 different size enclosures from 1 to 12 stations. Included features on each station:

- One red LED indicator.
- One green LED indicator.
- One SPDT toggle switch (Specify momentary or maintained contact).

All consoles require external power. Specify operating voltage 12 or 24 VDC when ordering.

MODEL	PRODUCT	LIST PRICE
<b>8001SF</b>	1 Station Slope Front Console	380.00
<b>8002SF</b>	2 Station Slope Front Console	506.00
<b>8003SF</b>	3 Station Slope Front Console	633.00
<b>8004SF</b>	4 Station Slope Front Console	844.00
<b>8005SF</b>	5 Station Slope Front Console	950.00
<b>8006SF</b>	6 Station Slope Front Console	1140.00
<b>8007SF</b>	7 Station Slope Front Console	1330.00
<b>8008SF</b>	8 Station Slope Front Console	1468.00
<b>8009SF</b>	9 Station Slope Front Console	1652.00
<b>8010SF</b>	10 Station Slope Front Console	1835.00
<b>8011SF</b>	11 Station Slope Front Console	1856.00
<b>8012SF</b>	12 Station Slope Front Console	2025.00

ACCESSORIES	LIST PRICE
<b>LK</b> Label Kit - Includes engraved nameplates to number stations 1 thru 12 and 5 nameplates to label functions "SECURE", "UNSECURE", "CLOSED", "OPEN" and "RELEASE" as required.	53.00



MODEL "SF"	A	B	C
<b>8001-8003</b>	<b>6.5"</b>	<b>8.3"</b>	<b>3.0"</b>
<b>8004-8005</b>	<b>10.0"</b>	<b>8.3"</b>	<b>3.0"</b>
<b>8006-8007</b> <b>8008</b>	<b>14.0"</b>	<b>8.3"</b>	<b>3.0"</b>
<b>8009-8010</b> <b>8011-8012</b>	<b>17.0"</b>	<b>8.3"</b>	<b>3.0"</b>



Universal Control  
Module

## 8000 Series Custom Consoles

Consoles are specially fabricated to customer requirements. The factory must be consulted for specific pricing, delivery and performance specifications. Consoles, regardless of configuration, share common monitoring and control functions. DynaLock has developed a universal control module to perform these functions. It satisfies the majority of applications, keeps initial cost to a minimum and facilitates service.

**Please refer to page 44 - "8000 Series Quotation Questionnaire" before contacting Sales for a price quotation.**



8005CSF

## 8000CSF Series

CSF - Custom Slope Front Consoles are capable of performing additional control and monitoring functions, with increased station capacity beyond the standard 8000SF Series on page 42.



8030DT

## 8000DT Series

DT - Desk Top Consoles are furnished in black cabinets with a brushed aluminum finish front panel. Cabinet size and shape are configured to reflect console function.



8012WM

## 8000RM and 8000WM Series

RM - Rack Mount and WM - Wall Mount Consoles are furnished on a brushed aluminum finish panel, with or without back box.

## 8000 Series Quotation Questionnaire

Please complete the following questionnaire and fax it to 860-585-0338 for a prompt price and delivery quotation. Refer to 8000 Series Brochure for complete explanation of console terminology, found at [www.dynalock.com](http://www.dynalock.com).

Style of Console:  CSF  
 RM  
 DT  
 WM

Type of electric lock(s) to be controlled:  
 Electromagnetic  With delay egress  
 Electric Deadbolt  Fail-Safe  Fail-Secure  
 Electric Strike  Fail-Safe  Fail-Secure

Input Voltage:  12V  24V

Number of Stations: \_\_\_\_\_

Locks to be controlled have the following options:  Door Status  Lock Status  Anti-Tamper

Console to:  Control/Monitor  Control Only  Monitor Only

Individual Station Type:  T  TL1  TL2  TL3  L1  L2  L3

Type of Control Switch:  Maintained Contact  Momentary Contact

Light color preferences from top to bottom: (Red, Green, Yellow). (T) \_\_\_\_\_ (M) \_\_\_\_\_ (B) \_\_\_\_\_

Master Alarm Station with Audible (MA):  Yes  No

If Yes Audible Signals:  Door Status (open)  Lock Status (unlocked)  Delay Egress (3101B lock)

Standard: Audible will sound when condition occurs and continue until condition is corrected.

Other - Explain: \_\_\_\_\_  
\_\_\_\_\_

Master Alarm Station includes mute switch to silence audible (audible will silence but will be overridden with new alarm condition) and red power "ON" LED.

Master Override:  MOT  MOK  MOC

Master Lockout:  MLT  MLK  MLC

System Description of Operation (please type, using a separate page if necessary):

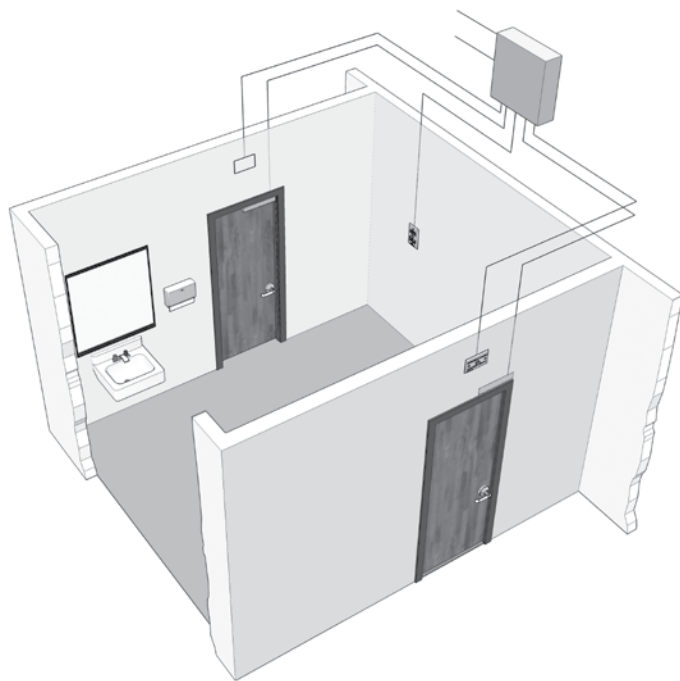


## 9200 Series Door Position Contacts

MODEL	PRODUCT	LIST PRICE
<b>9200</b>	Surface mounted magnetic contact SPDT rated 0.3 Amps @ 30VDC.	38.00
<b>9250</b>	Mortise mounted magnetic contact SPDT rated 0.3 Amps @ 30VDC.	58.00
<b>9275</b>	Mortise mounted roller ball type SPDT rated 4 Amps @ 24VDC.	66.00
<b>9280</b>	Mortise mounted roller ball type DPDT rated 4 Amps @ 24VDC.	87.00

## 9300 Series Armored Door Cords

MODEL	PRODUCT	LIST PRICE
<b>9300</b>	Flexible armored door cord 18" long, less wires.	40.00
<b>9350</b>	Flexible armored door cord 18" long with three 24"L wires.	53.00



## 8500 Series Communicating Bathroom Systems

Series 8500 Bathroom Systems provide privacy for the occupant of a single bathroom shared by adjacent rooms. The occupant can lock/unlock all doors using an interior pushbutton. Exterior pushbuttons are located above or adjacent to each door, to provide release of all doors during an emergency. Facilities for fire panel emergency release are also provided. The complete system includes control switches, magnetic locks, power supply, and wiring diagram.

MODEL	PRODUCT	LIST PRICE
<b>8500-2</b>	Two Door System - Includes:	1800.00
	(2) 2511-DSM      Maglock with door status switch	
	(1) 6110-CB-ILM-24V      Red pushbutton, SPDT, maintained silk screened "LOCKED WHEN LIT, PRESS TO OPERATE"	
	(2) 6110-EO-ILM-24V      Red pushbutton, SPDT, maintained silk screened "EMERGENCY UNLOCK, OCCUPIED WHEN LIT"	
	(1) 5500-FAC-ILB-24V      Power supply, 24VDC, 2A	
	(1) 900274      System wiring diagram	
<b>8500-3</b>	Three Door System - Includes:	2286.00
	(3) 2511-DSM      Maglock with door status switch	
	(1) 6110-CB-ILM-24V      Red pushbutton, SPDT, maintained silk screened "LOCKED WHEN LIT, PRESS TO OPERATE"	
	(3) 6110-EO-ILM-24V      Red pushbutton, SPDT, maintained silk screened "EMERGENCY UNLOCK, OCCUPIED WHEN LIT"	
	(1) 5500-FAC-ILB-24V      Power supply, 24VDC, 2A	
	(1) 900419      System wiring diagram	



# Special Finishes



PART NUMBER	FINISHES							
	SATIN ALUMINIUM US28	BRIGHT BRASS US3	SATIN BRASS US4	LIGHT BRONZE US10	MEDIUM BRONZE US13	DARK BRONZE US10B	BLACK SATIN US19	BRIGHT CHROME US26
SINGLE MAG. LOCKS	STD	200.00	68.00	68.00	68.00	68.00	68.00	156.00
SINGLE MAG. LOCKS - TJ	STD	253.00	111.00	111.00	111.00	111.00	111.00	200.00
DOUBLE MAG. LOCKS	STD	276.00	111.00	111.00	111.00	111.00	111.00	266.00
DOUBLE MAG. LOCKS -TJ	STD	388.00	200.00	200.00	200.00	200.00	200.00	354.00
TJ20 AND TJ30 KIT, 4850 SERIES SPECIALITY BRACKETS	STD	55.00	44.00	44.00	44.00	44.00	44.00	55.00
3500 AND 3600 SERIES CUSTOM LENGTH HOUSING TO 36"	STD	332.00	155.00	155.00	155.00	155.00	155.00	310.00
3700 AND 3800 SERIES CUSTOM LENGTH TO 72"	STD	NA	NA	NA	NA	NA	NA	NA
3700 AND 3800 SERIES CUSTOM LENGTH HOUSING TO 96"	STD	NA	NA	NA	NA	NA	NA	NA
4000 SERIES TO 14"	STD	111.00	68.00	68.00	68.00	68.00	68.00	111.00
4000 SERIES TO 36"	STD	222.00	111.00	111.00	111.00	111.00	111.00	222.00
4000 SERIES TO 72"	STD	NA	NA	NA	NA	NA	NA	NA
4000 SERIES TO 96"	STD	NA	NA	NA	NA	NA	NA	NA
* 6000 AND 7000 CONTROLS AND KEYSWITCH	NA	44.00	44.00	NA	NA	44.00	NA	44.00
6451 EXIT SENSOR BAR	STD	NA	40.00	NA	NA	40.00	NA	NA
7200 KEYPAD	STD	100.00	68.00	68.00	68.00	68.00	68.00	100.00

CONSULT FACTORY FOR AVAILABILITY, COST, DELIVERY AND MINIMUM ORDER BILLING THAT MAY APPLY.  
 NA - FINISH NOT AVAILABLE. FOR BEST COLOR MATCH SUBMIT SAMPLE.

\* Excludes 6500, 6700 & 6800 Series. See pages 33-35 for pricing on these products.

## 1030 Series Locking System Kits

High security Locking Systems Kits available with either a Exit Sensor Bar or request-to-exit pushbutton.

The 1030-RXB Kit supplies all the components to provide high-security locking and access control with single motion egress for a single commercial grade 7'-0" x 3'-0" hollow metal door and frame.

The 1030-RXP Kit provides all the components for high-security locking and standard access/egress control for a single commercial grade door and frame.

Both Kits consist of:

- 1500 Lb. H.F. Magnetic Lock
- 24VAC/1.5 Amp Plug-in Transformer
- Momentary SPDT Keyswitch
- 100 Ft. (4) Color 18 ga. Stranded Wire
- System Wiring Diagram

Additionally, the 1030-RXB Kit includes a 36" Exit Sensor Bar with armored door loop and the 1030-RXP Kit includes a 1-5/8" dia. momentary NC pushbutton.

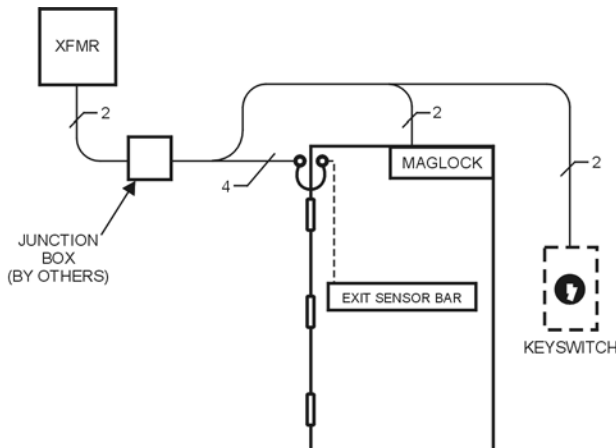


1030-RXB

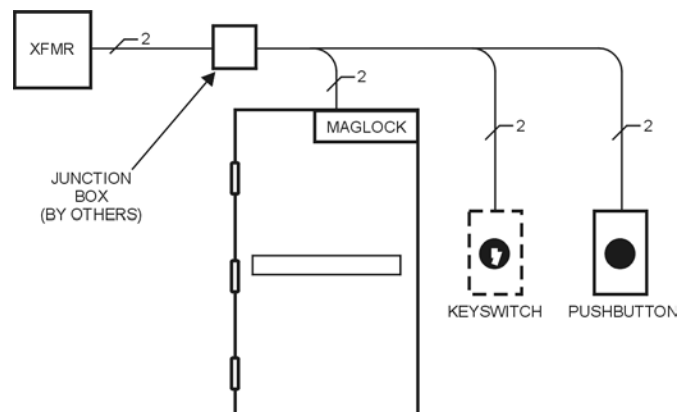


1030-RXP

MODEL	PRODUCT	LIST PRICE
<b>1030-RXB</b>	Locking System Kit with Exit Sensor Bar For Single Outswing Door US28 Finish	975.00
<b>1030-RXB-US10B</b>	Locking System Kit with Exit Sensor Bar For Single Outswing Door US10B Finish	1081.00
<b>1030-RXP</b>	Locking System Kit with Exit Pushbutton For Single Outswing Door US28 Finish	709.00

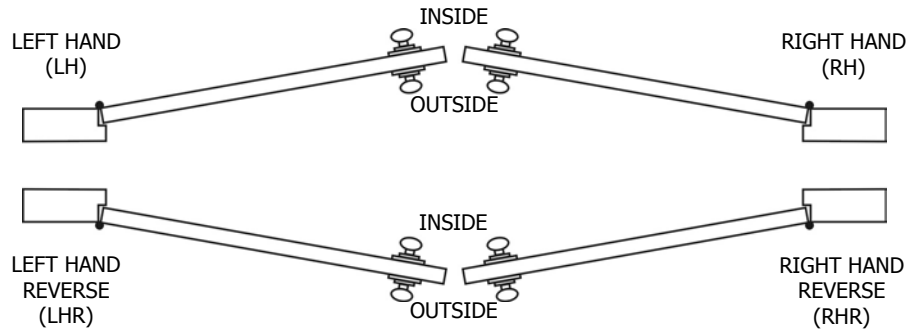


**1030-RXB**  
Typical System  
Installation



**1030-RXP**  
Typical System  
Installation

## Door Handing

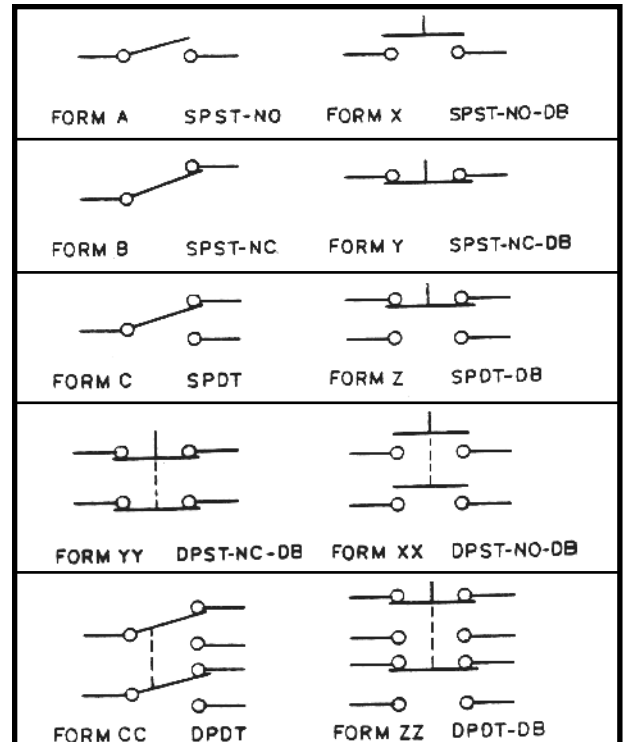


DOOR HAND DETERMINED FROM OUTSIDE

## Architectural Finish Reference

FINISH DESCRIPTION	U.S. STANDARD REFERENCE NO.	BHMA REFERENCE NO.
Satin Alum	US28	628
Bright Brass	US3	605
Satin Brass	US4	606
Light Bronze	US10	612
Medium Bronze	US13	617
Dark Bronze	US10B	613
Black Satin	US19	631
Bright Chrome	US26	625
Satin Stainless Steel	US32D	630

## Switch Contact Forms





**LIST PRICE BOOK No. 10**

**Effective January 1, 2009**

*Featuring*



**For Additional Information Contact:**



**DynaLock Corporation**

705 Emmett Street  
P.O. Box 2728  
Bristol, CT 06011-2728  
Ph/ 877-DYNALOCK Toll Free  
860-582-4761  
Fx/ 860-585-0338  
E-mail/ [info@dynalock.com](mailto:info@dynalock.com)  
Web/ [www.dynalock.com](http://www.dynalock.com)



***American Quality***