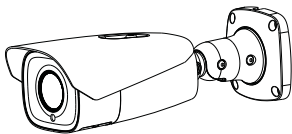


Network Camera

Quick Start Guide



- Please read this instruction carefully before using the product and keep it for further reference.
- All the examples and pictures used here are for reference only.
- The contents of this manual are subject to change without notice.

1 Warning and Caution

- If the product does not work properly, please contact your dealer or the nearest service center. Never attempt to disassemble the camera yourself. (We shall not be responsible for any problems caused by unauthorized repair or maintenance.)
- In the use of the product, you must be strict compliance with the electrical safety regulations of the nation and region. When the product is mounted on wall or ceiling, the device shall be firmly fixed.
- Do not allow water or liquid intrusion into the camera.
- Do not use camera beyond specified voltage range.
- Do not drop the camera or subject it to physical shock.
- Avoid touching the camera lens.
- If cleaning is necessary, please use clean cloth to wipe it gently.
- Do not aim the camera at the sun or extra bright place.
- Do not place the camera in extremely hot, cold (the operating temperature shall be $-30^{\circ}\text{C}\sim 60^{\circ}\text{C}$), dusty or damp locations, and do not expose it to high electromagnetic radiation.
- To avoid heat accumulation, good ventilation is required for operating environment.

2 Package



Camera



Quick start guide



CD



4 tapping screws

1 machine screw



CVBS&DC
IN cables



Drill template

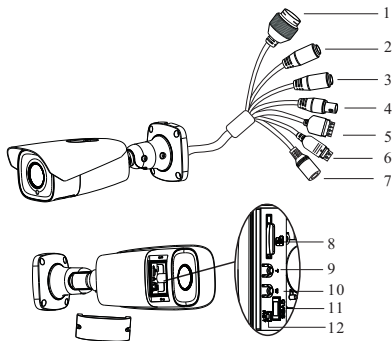


Screwdriver



Plastic plug × 4

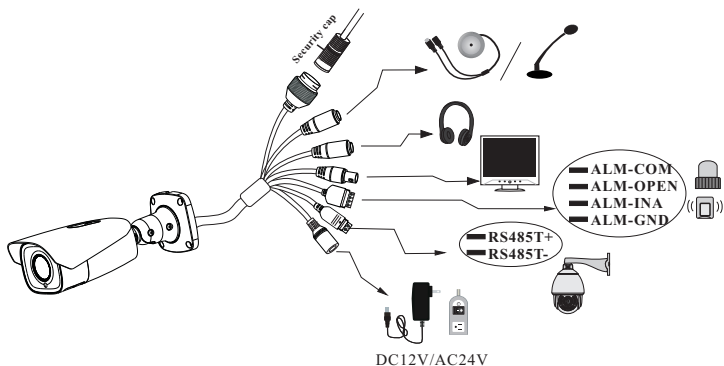
3 Overview



- 1 Ethernet Connector *
- 2 MIC Audio Input
- 3 HP Audio Output
- 4 CVBS Video Output
- 5 Alarm Input/Output
- 6 RS485
- 7 Power Connector *
- 8 Micro SD Card Slot
- 9 Zoom +
- 10 Zoom -
- 11 DC IN & CVBS Interface
- 12 Reset

* 1 It is recommended to install the security cap for outdoor installation.

* 2 If the PoE switch is used to power the camera, DC12V/AC24 power supply is not required.

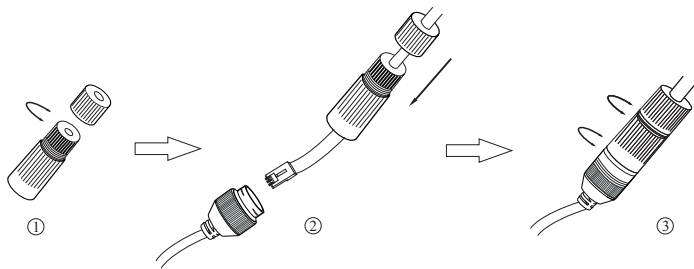


● Alarm Connection

Alarm Input: Join the grounding ends of the sensor and the camera and then connect the signal cable of the sensor to the alarm input port of the camera.

Alarm Output: Loosen the screws in the alarm output port. Then insert the signal wires of the alarm output devices into the port of COM and OPEN separately. Finally tighten the screws. Some of the external alarm output devices need the power supply.

● Connecting Network Cable



① Loosen the nut from the main element.

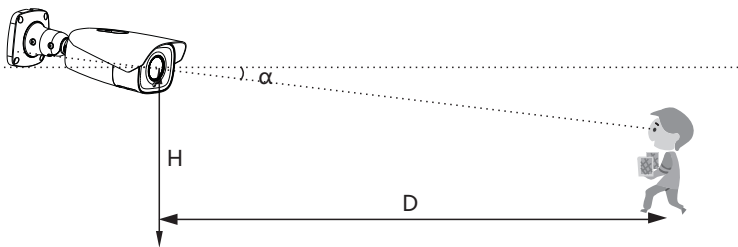
② Run the network cable (without RJ 45 connector) through the both elements. Then crimp the cable with RJ 45 connector.

③ Connect the cable to the hermetic connector. Then tighten the nut and the main cover.

4 Installation

► Requirements of Camera Installation & Surrounding areas

1. The camera shall be installed right in front of the passage to take snapshots of full-frontal faces.
2. The installation height ranges from 2.0m to 3.5m, adjustable according to the focal-length of different lenses and object distances).
3. The depression angle (α) of the camera shall be less than or equal to 15° .
4. The object distance (D) depends on the focal-length of the lens mounted in the camera.



Surveillance Width	Focal-length	Optimal Object Distance	Installation Height	Camera's Depression Angle
2.4m	7-22mm (W)	3.6m	2.1m	10°
2.4m	7-22mm (T)	6.0m	2.6m	10°

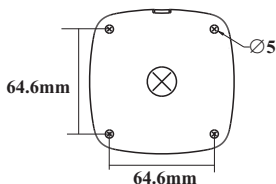
5. To ensure the accuracy of face detection, the captured faces are only allowed to deviate less than 30° leftward or rightward or 20° upward or downward.
6. Make sure the detected face is clear and with adequate and even light. Otherwise, the white light mode of the camera must be enabled for light compensation (especially, low brightness and too much darkness on the detected face).

7. The following scenes are not applicable, like crowded scenes (airport, railway station, square, etc.), backlight scenes, crossroads and so on.

► Install the Camera

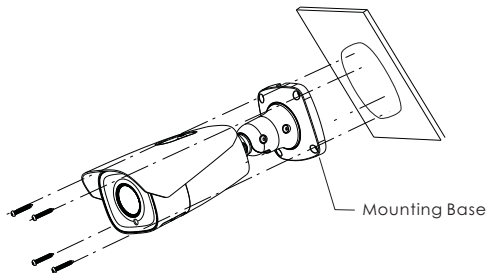
Please make sure that the wall or ceiling is strong enough to withstand 3 times the weight of the camera. Please install the camera under dry environment.

① Attach the drill template to the place where you want to fix the camera. Then drill the screw holes and the cable hole on the wall according to the drill template.

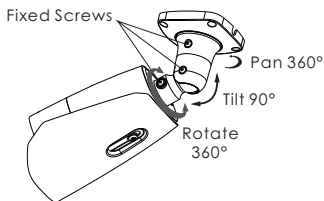


② Route the cables and connect the relevant cables.

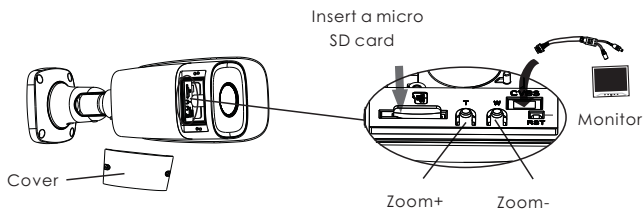
③ Fasten the mounting base to the wall with the screws provided.



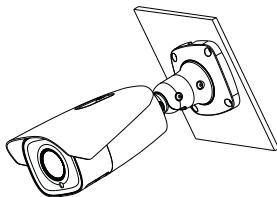
④ Bracket adjustment. Before adjustment, preview the image of the camera on a monitor (See step ⑤) and then loosen the fixed screws to adjust the view angle of the camera. After that, tighten the fixed screws.



- ⑤ Open the cover of the camera as shown in the following figure and then insert a micro SD card. After that, press T/W button to obtain an optimum image. Before adjustment, view the image of the camera on a monitor.

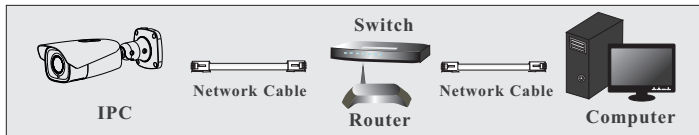


- ⑥ Install the cover back to the camera and fix it firmly with the screws. (Note that the cover should not be installed unevenly.)

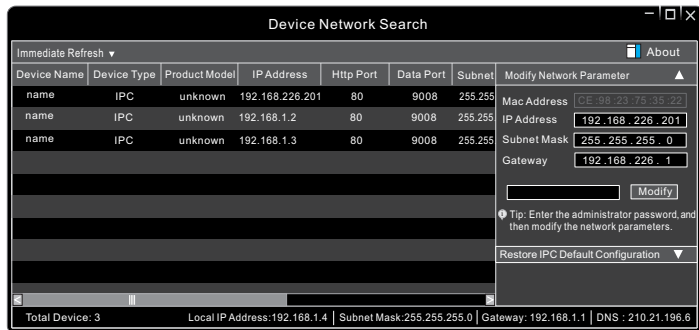


5 Network Connection

● Access the camera through IP-Tool



- ① Make sure that the camera and the PC are well connected via LAN.
- ② Find the IP-Tool from the CD and then install it in the computer. After that, run the IP-Tool as shown below.



- ③ Modify the IP address. The default IP address of this camera is 192.168.226.201. Click the information of the camera listed in the above table to show the network information on the right hand. Modify the IP address and gateway of the camera and make sure its network address is in the same local network segment as the computer's. Please modify the IP address of your device according to the practical situation.

Modify Network Parameter ▲

Mac Address

IP Address

Subnet Mask

Gateway

For example, the IP address of your computer is 192.168.1.4. So the IP address of the camera shall be changed to 192.168.1.X and the gateway shall be changed to 192.168.1.1. After modification, please enter the password of the administrator and click “Modify” button to modify the settings.

⚠ The default password of the administrator is “**123456**”.

④ Double-click the camera listed in the IP-Tool or manually enter the IP address in the address bar of the web browser to connect IP-CAM. Then follow directions to download and install the plugin.

⑤ Enter the username and password in the login interface.

⚠ The default username is **admin**; the default password is **123456**.

6 Face Detection Settings

① Detection Settings

1. Click Config→Event→Face Detection→Detection Config to go to the face detection settings interface.

2. Enable the face detection function.

Save Source Information: if checked, the whole picture will be saved to a local PC or an SD card when detecting a face.

Save Face Information: if checked, the captured face will be saved to a local PC or an SD card when detecting a face.

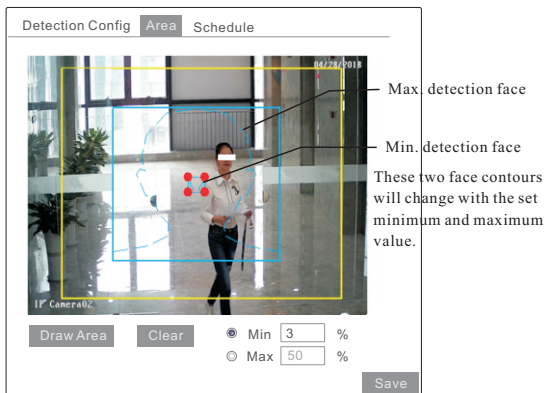
Note: To save images to a local PC, please enable the local face information storage first (Config→System→Local Config). To save images to an SD card, please install an SD card first and then check “Trigger Snap” in this interface.

3. Set alarm holding time and alarm trigger options (including “Trigger Alarm Out”, “Trigger Snap”, “Trigger SD Recording”, etc.).

② Area Settings

1. Click Config→Event→Face Detection→Area to go to the area settings interface.

2. Click “Draw Area” and then drag the border line of the rectangle to modify its size. Click “Stop Draw” to finish drawing. Then set the maximum value and the minimum value of the detected face.



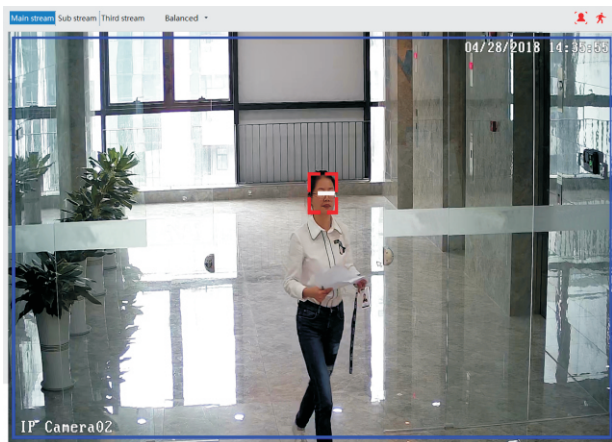
③ Schedule Settings


1. Click Config→Event→Face Detection→Schedule to go to the schedule

settings interface. Click “Erase” and drag the mouse to cancel the schedule on the timeline. Click “Add” and drag the mouse to add the schedule on the timeline. Click “Manual Input” for a specific day to enter specific start and end time. You can also set the alarm time for a special day.

Note: Remember clicking “Save” to save all settings for each tab.

④ Detect Faces in the Live View Interface



In the live view interface, the face indicator  will flash only when the face detection is enabled and faces are detected. These detected faces will be traced in the detected area automatically.

⑤ White Light Mode & Face Exposure Setting

In low illumination condition, white light mode is necessary to enable (go to Config→Event→Face Detection→Advanced tab). Manual or Auto is optional. If the brightness of the captured face is not enough, the face exposure function can be enabled.

⑥ Deactivate Face Detection

Click Config→Event→Face Detection to go to the detection config interface and then uncheck “Enable”.

