

Quick Start Guide

GV-VMS V15.10.1.0



Thank you for purchasing GV-VMS. This guide is designed to assist the new user in getting immediate results from the GV-VMS. For advanced information on how to use the GV-VMS, please refer to *GV-VMS User's Manual* online.



© 2016 GeoVision, Inc. All rights reserved.

Under the copyright laws, this manual may not be copied, in whole or in part, without the written consent of GeoVision.

Every effort has been made to ensure that the information in this manual is accurate. GeoVision, Inc. makes no expressed or implied warranty of any kind and assumes no responsibility for errors or omissions. No liability is assumed for incidental or consequential damages arising from the use of the information or products contained herein. Features and specifications are subject to change without notice.

Note: No memory card slot or local storage function for Argentina.

GeoVision, Inc.
9F, No. 246, Sec. 1, Neihu Rd.,
Neihu District, Taipei, Taiwan
Tel: +886-2-8797-8377
Fax: +886-2-8797-8335
<http://www.geovision.com.tw>

Trademarks used in this manual: *GeoVision*, the *GeoVision* logo and GV series products are trademarks of GeoVision, Inc. *Windows* is the registered trademarks of Microsoft Corporation.

February 2016

GV-VMS Trial Version

GV-VMS is a comprehensive video management system that records up to 64 channels of GeoVision and/or third-party IP devices. GeoVision offers a **60-day trial** period that allows you to connect to **16 channels of third-party IP devices** without license. A “Trial Version” watermark will appear on the live view and recorded files for the 16 channels of third-party IP devices.



Note:

1. If you insert a dongle for third-party IP devices, the dongle license will override the trial version and the 16 trial channels will no longer be supported.
 2. Currently, you cannot remotely access the trial channels using remote applications such as GV-Edge Recording Manager and GV-Control Center...etc.
-

Once the trial period expires, you will need to purchase dongles to connect to third-party IP devices. The licenses available for purchase are shown below:

Supported Devices	Channels	License
GV IP Devices Only	32 ch	No license required.
	64 ch	GV-VMS Pro license required, 32 ch per license.
GV + 3rd-Party IP Devices	16 ch	Trial Version: 16 channels of 3 rd -Party IP devices
	32 ch	3rd-Party license required, in increments of 1 ch.
	64 ch	2 licenses required: <ul style="list-style-type: none"> • GV-VMS Pro license, 32 ch per license. • 3rd-Party license, in increments of 1 ch.

Note: GV-USB Dongle comes in internal and external dongles. It is recommended to use the internal GV-USB Dongle to have the Hardware Watchdog function, which restarts the PC when Windows crashes or freezes.

For the list of supported third-party IP camera models, please visit GeoVision's website:
http://www.geovision.com.tw/english/4_21.asp

Contents

GV-VMS Trial Version	i
Chapter 1 Introduction.....	1
1.1 License.....	1
1.2 Options.....	2
1.3 Recommended System Requirements	3
1.4 Minimum Network Requirements	4
1.5 Installing GV-VMS.....	5
1.6 Uninstalling and Upgrading GV-VMS.....	7
1.7 Running GV-VMS.....	8
Chapter 2 Getting Started.....	10
2.1 Adding IP Cameras to GV-VMS.....	10
2.2 Accessing Camera Live View.....	12
2.3 Start Monitoring.....	13
Chapter 3 Camera Setup.....	14
3.1 Configuring Recording Settings	14
3.2 Configuring Camera Settings	16
Chapter 4 Live View	20
4.1 Arranging Live View Layouts.....	20
4.2 Functions on the Live View	23
4.2.1 Zoom Window	25
4.2.2 Scan Window	27
4.2.3 Focus View and PIP.....	29
4.3 Setting Up Fisheye Cameras	31
4.4 Setting Up PTZ Cameras	33
Chapter 5 Video Processing.....	34
Chapter 6 Video Playback and Backup	36
6.1 Playing Back Recorded Videos.....	36

6.2 Backing Up Recorded Videos	38
Chapter 7 Other Important Features.....	39
7.1 Setting Up I/O Functions	39
7.2 Setting Up Schedules.....	41
7.3 Setting Up E-mail Alert Notifications	43

Chapter 1 Introduction

Welcome to the *GV-VMS Quick Start Guide*. In this quick guide, you will learn about the basic settings of GeoVision Video Management System. For complete instructions, refer to *GV-VMS User's Manual*.

1.1 License

GV-VMS supports connection with up to 64 IP devices. You can connect up to 32 channels of GV-IP Devices for free. If you need to connect more than 32 channels of GV-IP Devices or connect with third-party IP devices, license is required.

Supported Devices	Channels	License
GV IP Devices Only	32 ch	No license required.
	64 ch	GV-VMS Pro license required, 32 ch per license.
GV + 3rd-Party IP Devices	16 ch	Trial Version: 16 channels of 3 rd -Party IP devices.
	32 ch	3rd-Party license required, in increments of 1 ch.
	64 ch	2 licenses required: <ul style="list-style-type: none"> • GV-VMS Pro license, 32 ch per license. • 3rd-Party license, in increments of 1 ch.
<p>Note: GV-USB Dongle comes in internal and external dongles. It is recommended to use the internal GV-USB Dongle to have the Hardware Watchdog function, which restarts the PC when Windows crashes or freezes.</p>		

For the list of supported third-party IP camera models, please visit GeoVision's website:

http://www.geovision.com.tw/english/4_21.asp

1.2 Options

The following optional devices are available to expand your GV-VMS's capabilities and versatility. Contact your dealer for more information.

Optional Devices	Description
Internal USB Dongle	The USB dongle can provide the Hardware Watchdog function to the GV-VMS by restarting the computer when Windows crashes. You need to connect the dongle internally on the motherboard.
GV-Hub V2	An easy way for serial port extension, this hub can add 4 RS-232 / RS-485 serial ports through the GV-VMS's USB port.
GV-COM V2	GV-COM V2 can add 1 RS-232 / RS-485 serial port through the GV-VMS's USB port.
GV-IO Box (4 Ports)	GV-IO Box 4 Ports provides 4 inputs and 4 relay outputs, and supports both DC and AC output voltages. A USB port is also provided for PC connection.
GV-IO Box (8 Ports)	GV-IO Box 8 Ports provides 8 inputs and 8 relay outputs, and supports both DC and AC output voltages. You can connect the unit to the PC either by using its USB port or through network by using its Ethernet module.
GV-IO Box (16 Ports)	GV-IO Box 16 Ports provides 16 inputs and 16 relay outputs, and supports both DC and AC output voltages. You can connect the unit to the PC either by using its USB port or through network by using its Ethernet module.
GV-Joystick V2	GV-Joystick V2 allows you to easily control PTZ cameras. It can be either plugged into the GV-VMS for independent use or connected to GV-Keyboard.
GV-Keyboard V3	GV-Keyboard V3 is used to program and operate GV-VMS and PTZ cameras. Through RS-485 configuration, it can control up to 36 GV-VMS. In addition, you can connect PTZ cameras directly to the keyboard for PTZ control.

1.3 Recommended System Requirements

Below are the recommended PC requirements for connecting GV-VMS with 32 and 64 channels of GV and 3rd party IP cameras (dual streams).

	GV-VMS (Up to 32 Channels)	GV-VMS Pro (Up to 64 Channels)
OS	64-bit Windows 7 / 8 / 8.1 / 10 / Server 2008 R2 / Server 2012 R2	
CPU	4th Generation i3-4130, 3.4 GHz	4th Generation i7-4770, 3.4 GHz
Memory	8 GB RAM	16 GB RAM

1.4 Minimum Network Requirements

The data transmitting capacity of GV-VMS depends on the number of Gigabit connections available. The numbers of Gigabit network cards required to connect **64** channels are listed below according to the resolution and codec of the source video.

Codec	Resolution	Bitrate Used (Mbps)	Total FPS for 64 ch	Gigabit Network Cards Required	Max. Channels Supported per Network Card
H.264	1.3 MP	5.05	1920	1	Max. 64 ch / card
	2 MP	7.01	1920	1	Max. 64 ch / card
	3 MP	10.48	1280	1	Max. 64 ch / card
	4 MP	11.65	960	2	Max. 50 ch / card
	5 MP	16.48	640	2	Max. 38 ch / card
	8 MP	17.14	1600	2	Max. 38 ch / card
	12 MP	16.67	960	2	Max. 38 ch / card
MJPEG	1.3 MP	32.36	1920	3	Max. 22 ch / card
	2 MP	44.96	1920	4	Max. 16 ch / card
	3 MP	38.73	1280	4	Max. 18 ch / card
	4 MP	40.35	960	4	Max. 17 ch / card
	5 MP	30.48	640	3	Max. 22 ch / card
	8 MP	58.52	1600	6	Max. 12 ch / card
	12 MP	65.98	960	6	Max. 11 ch / card

Note: The network requirements may vary depending on the bit rate of the streams.

1.5 Installing GV-VMS

Before You Start

For optimal performance of your system, it is important to follow these recommendations before installing the GV-VMS:

- It is strongly recommended to use separate hard disks. One is for installing Windows OS and GV-VMS software, and the other is for storing recorded files and system logs.
- When formatting the hard disks, select NTFS as the file system.
- GV-VMS is a multi-channel video recording system. With normal use of the system, the drive containing video files will become fragmented. This is because GV-VMS constantly stores video files of multi channels simultaneously, and video files will be scattered all over the drive. It is not necessary to regularly perform disk defragmentation. Since GV-VMS software and video files are stored on separated hard disks, the performance of GV-VMS will not be affected.
- Since the size of transmitted data from IP cameras may be quite large and reach beyond the transfer rate of a hard disk, you should note the total of recording frame rates that you can assign to a single hard disk, as listed below:



Frame rate limit in a single hard disk

Video Resolution	H.264		MJPEG	
	Frame Rate	Bit Rate	Frame Rate	Bit Rate
1.3 MP (1280 x 1024)	660 fps	5.05 Mbit/s	300 fps	32.26 Mbit/s
2 MP (1920 x 1080)	660 fps	7.01 Mbit/s	210 fps	44.93 Mbit/s
3 MP (2048 x 1536)	440 fps	10.48 Mbit/s	140 fps	38.67 Mbit/s
4 MP (2048 x 1944)	330 fps	11.65 Mbit/s	105 fps	40.53 Mbit/s
5 MP (2560 x 1920)	220 fps	16.48 Mbit/s	80 fps	30.4 Mbit/s
8 MP (3840 x 2120)	660 fps	14.13 Mbit/s	96 fps	58.52 Mbit/s
12 MP (4000 x 3000)	330 fps	14.47 Mbit/s	56 fps	65.98 Mbit/s

Note: The data above was determined using the bit rate listed above and hard disks with average R/W speed above 110 MB/s.

The frame rate limit is based on the resolution of video sources. The higher video resolutions, the lower frame rates you can assign to a single hard disk. In other words, the higher frame rates you wish to record, the more hard disks you need to install. For the information of recording frame rates, you may consult the user's manual of the IP camera that you wish to connect to.

Installing GV-VMS

1. To download GV-VMS, go to the Software Download and Upgrading page of GeoVision Website: http://www.geovision.com.tw/english/5_8_VMS.asp.
2. To install GV-VMS, find the **Primary Applications** section under the Video Management Software tab and click the **Download** icon  of **GV-VMS**.
3. Double-click **GVVMSInstaller.exe** and follow the instructions in the wizard to complete installation.
4. If you are using a USB dongle, insert the dongle to your computer. The GV-USB dongle is needed if you want to connect to more than 32 channels of IP devices or to third-party IP devices.
5. To install USB driver, find the **Driver** section under the Video Management Software tab, and click the **Download** icon  of **GV-USB Devices Driver**.

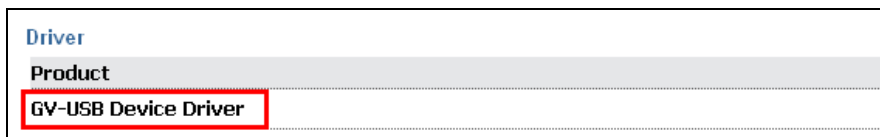


Figure 1-1

If you are using the GV-USB dongle, verify that the driver is installed correctly after the steps above. Go to Windows Device Manager and expand **DVR-Devices**. You should see the **GV-Series USB Protector**.



Figure 1-2

1.6 Uninstalling and Upgrading GV-VMS

GeoVision will periodically release software updates on our website. **Before installing software upgrade, be sure to uninstall GeoVision Software first.** By default, GeoVision software and log files are stored on one drive, while video files are stored on a different drive. Uninstalling GV-VMS will not remove the video, log, and setting files previously saved in the computer.

To uninstall the GV-VMS, follow these steps:

1. Close any open programs because your computer will restart during the uninstalling process.
2. Click the **Start** button, click **Control Panel**, and then click **Uninstall a Program** under Programs.
3. In the list of currently installed programs, select **GV-VMS**, and then click **Uninstall/Change**.

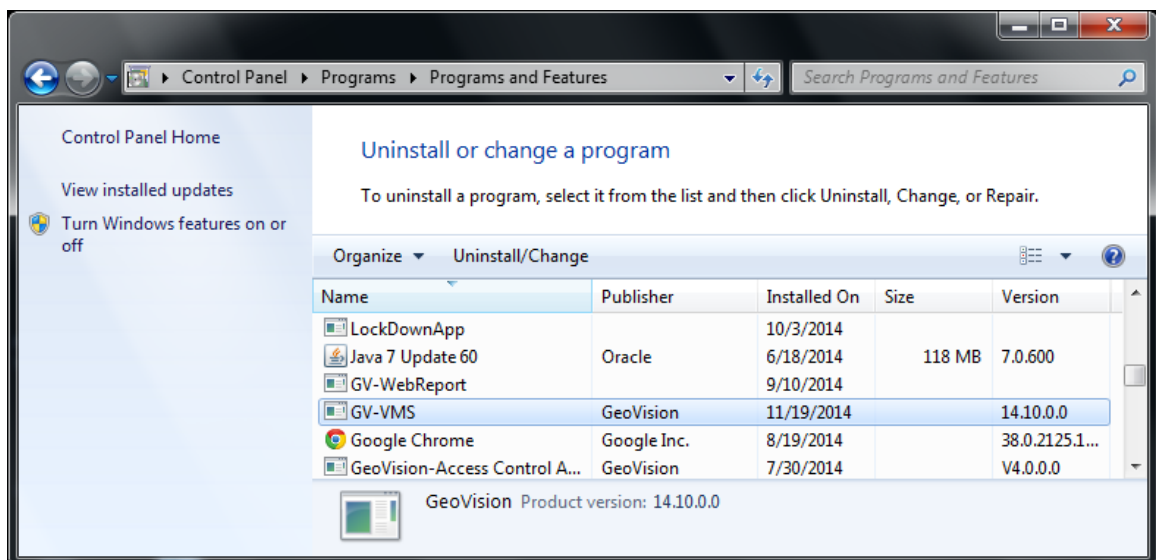



Figure 1-3

4. When you are prompted to confirm the program removal, click **Yes**.

To upgrade, download the newest GV-VMS from GeoVision's website and re-install on your computer: http://www.geovision.com.tw/english/5_8_VMS.asp. For details, see [Installing GV-VMS], 1.5 Installing GV-VMS in this Quick Start Guide.

1.7 Running GV-VMS

1. To start the system, double-click the **GV-VMS**  icon on desktop or in the folder where you have installed it.
2. Type your login information.

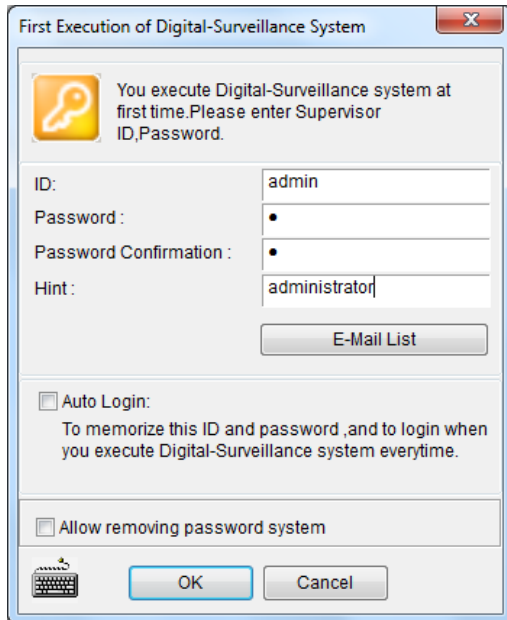


Figure 1-4

3. Click **E-Mail List** to set up an e-mail address so that you can recover a forgotten password when needed.
4. Click **OK**. The main screen of GV-VMS and a dialog box appears.
5. To choose how to save your system database, select **Microsoft Office Access Database** or select **Microsoft SQL Server** and fill out the required fields.

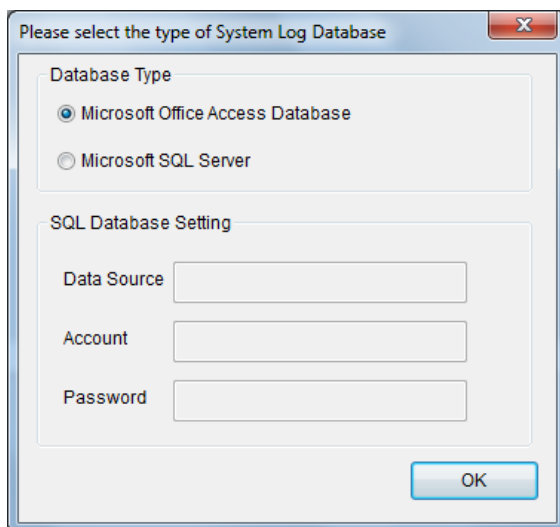


Figure 1-5

In the main screen of GV-VMS, the main setting buttons are located in the top-right corner. When logging in for the first time, the **Automatic Setup** dialog box will appear to help you quickly add cameras to the GV-VMS. Refer to the next section for details.



Figure 1-6

Chapter 2 Getting Started

2.1 Adding IP Cameras to GV-VMS

When logging in for the first time after GV-VMS is installed, the **Automatic Setup** dialog box appears automatically. Follow the steps below to add IP cameras.

1. Click **Automatic Setup** to see the list of IP cameras detected on the LAN.

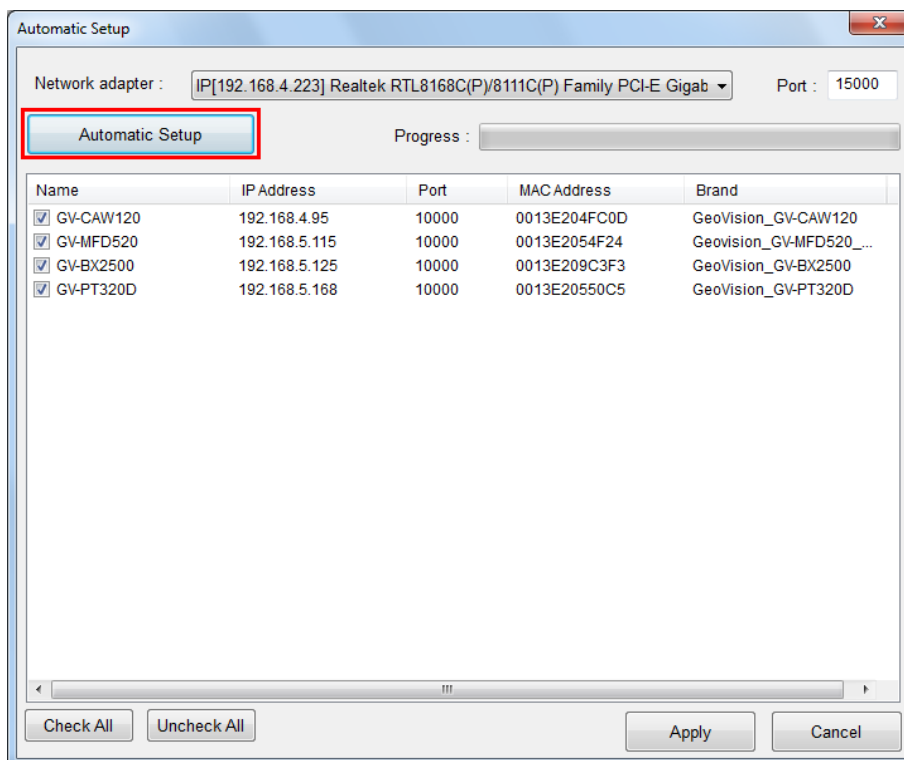


Figure 2-1

2. The default login information for cameras is **admin / admin**. Double-click the camera to type different ID and password in the dialog box below if needed.

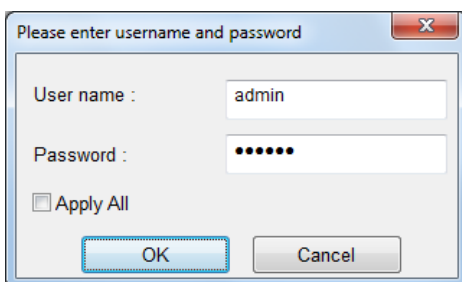


Figure 2-2

3. Make sure the cameras you want to add are selected and click **Apply**. The cameras added are now listed in the IP Device List.

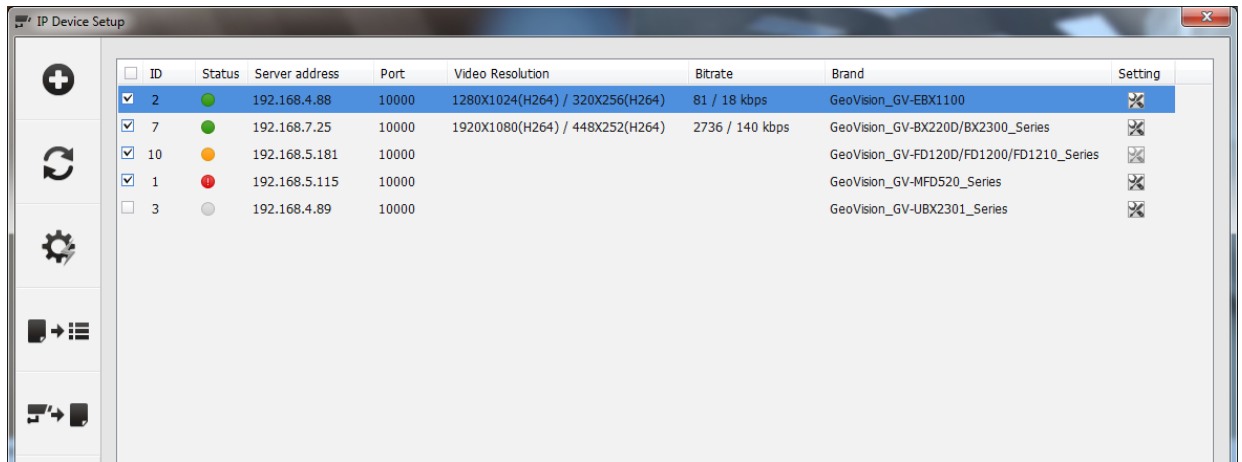


Figure 2-3

Status icons available:

- **Connected** The camera is connected.
- **Connecting** GV-VMS is trying to connect to the camera.
- **Connection Failed** Unable to connect to the camera. Place the cursor on the red icon to see the error message.
- **Inactive Camera** The camera is inactive. Click the checkbox to connect.
- Started Monitoring** The camera is under monitoring.
- Pre-Rec Enabled** Pre-recording is enabled.




4. To adjust camera settings, click the **Setup** button of a camera. Refer to 3.2 *Configuring Camera Settings* for details.
5. Close the dialog box by clicking X in the top-right corner. When adding camera for the first time, the cameras will be automatically assigned to the live view grid.

Note:

1. You can also access the IP Device Setup dialog box by clicking **Home** , selecting **Toolbar** , clicking **Configure** , selecting **Camera Install**.
2. If your camera was not detected during the scan in Automatic Setup, you can click the **Manual Setup** button to type the camera connection information manually.

2.2 Accessing Camera Live View

After adding cameras, you can access camera live view by dragging the camera in the Content List to the live view grid.

1. Click **Home** , select **Toolbar** , and select **Content List** . The Content List appears.
2. Click **Camera** in the content list to see the list of cameras added.
3. Drag the cameras to the live view grid.

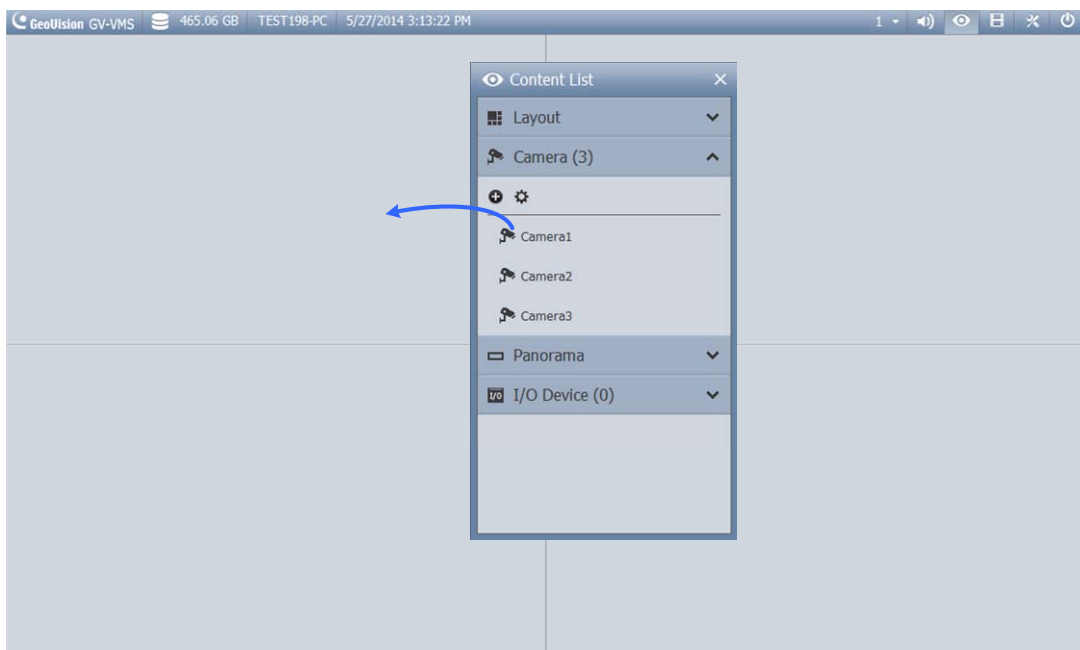




Figure 2-4

For details, see *Chapter 4 Live View* in this Quick Start Guide.

2.3 Start Monitoring

After setting up cameras and the live view, be sure to start monitoring the cameras to activate the following functions.

- Recording (See *Section 3.1*)
- Video Analysis (See *Chapter 5*)
- I/O Applications (See *Section 7.1*)

To start monitoring on connected cameras, click **Toolbar** , select **Monitor** , and select **Start All Monitoring** or select individual cameras.

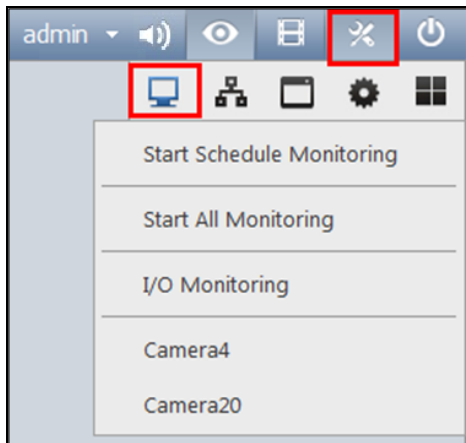





Figure 2-5

To see how to access recorded videos, refer to *Chapter 6 Video Playback and Backup* in this Quick Start Guide.

Note: If you have set a schedule, you can select **Start Schedule Monitoring**. The schedule takes precedence and the functions above will enable and disable accordingly. See *7.2 Setting Up Schedules* in this Quick Start Guide on how to set a schedule.

Chapter 3 Camera Setup

3.1 Configuring Recording Settings

After the cameras are added, you can configure the recording settings. Under **Home** , select **Toolbar** , click **Configure** , select **System Configure** and click **Record Setting**. This dialog box appears.

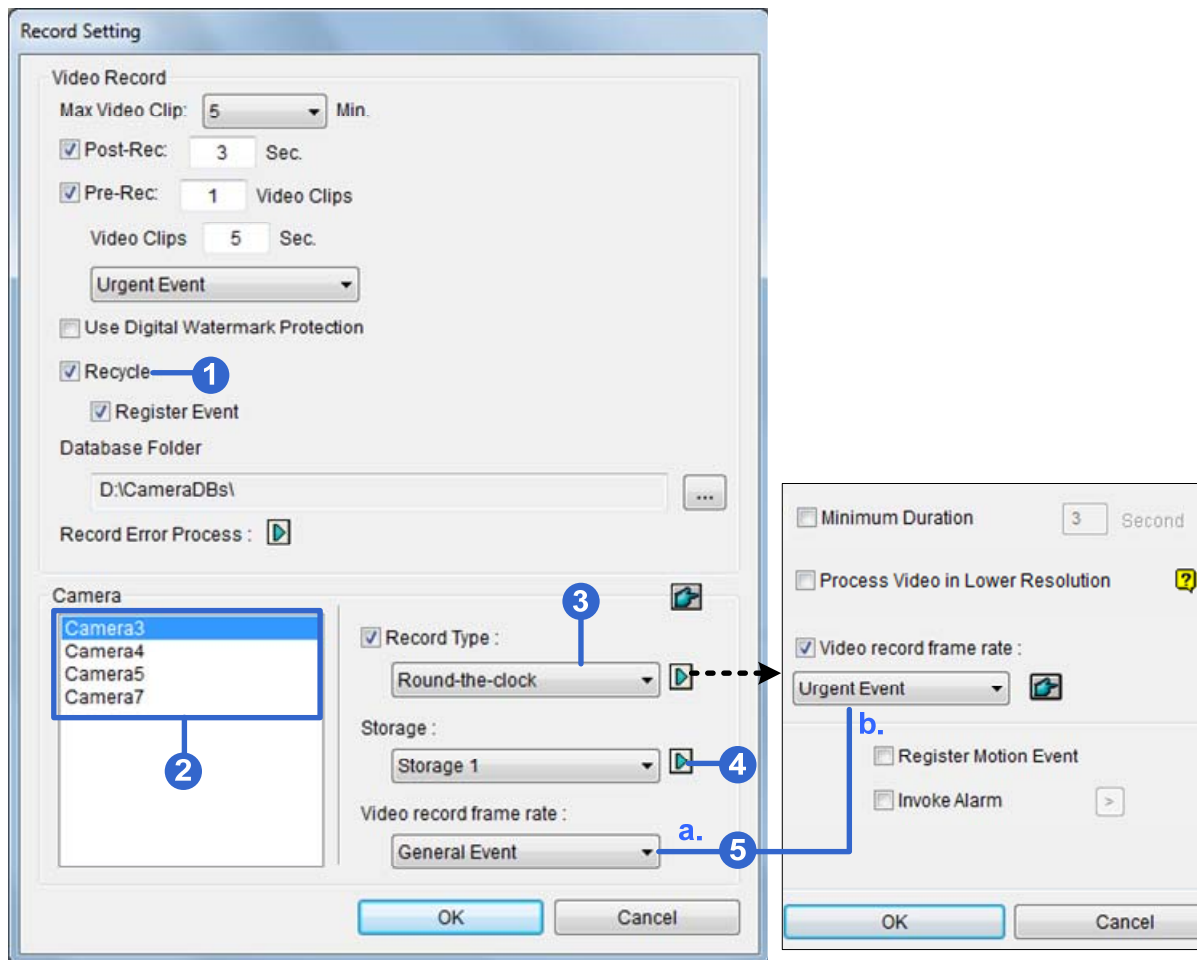




Figure 3-1

1. Enable the **Recycle** function. The oldest events will be deleted when the free space of the storage drive falls below the recycle threshold specified in step 4 below. This setting will be applied to all cameras.
2. Select the camera you want to configure. Hold the Shift key to select multiple cameras if needed.

3. Under Record Type, select **Round-the-clock** or **Motion Detect**.
4. Click the Arrow button  next to **Storage** to specify where to store the recorded videos and adjust the recycle threshold.
5. You can set different recording frame rates for motion and non-motion recordings. In Round-the-Clock mode, the camera will use the frame rate setting in 5a for non-motion events and 5b for motion events.
 - a. Define **non-motion** events as General or Urgent Event under **Video Record Frame Rate**.
 - b. For **motion** events, click the arrow button  next to Record Type and define motion events as General or Urgent Event under **Video record frame rate**.





The frame rate for General Event and Urgent Event can be defined in the camera's General Setting dialog box (Figure 3-4). Normally, you would set a higher frame rate for Urgent Events (Ex: full frame) and a lower frame rate for General Events (Ex: key frame only).


Note:

1. Refer to [\[General Setting\], Section 3.2](#) of this Quick Start Guide for setting the frame rate for General Event and Urgent Event.
 2. By default, the recording mode is set to Motion Detection and the Recycle function is enabled with the Recycle Threshold set to 32 GB.
-

For details on Motion Detection settings, see *Setting Up Motion Detection*, Chapter 1, *GV-VMS User's Manual*.

3.2 Configuring Camera Settings

To configure camera settings such as codec and frame rates, click the **Setup** button  of an active camera in the IP Device List (**Home**  > **Toolbar**  > **Configure**  > **Camera Install**). The settings available vary depending on the camera's firmware and whether the camera is connected.

There are three setup dialog boxes in the left menu of the camera's setting dialog box: **Video Setting**, **Audio Setting**, and **General Setting**. Clicking the Finger button  will apply the setting to all the cameras.

[Video Setting]

In Video Setting, you can configure the camera name, codec, frame rate, GOP, bitrate, resolution and video attributes of the camera. Note that changes made to the Video Setting dialog box will change the settings on the IP camera.

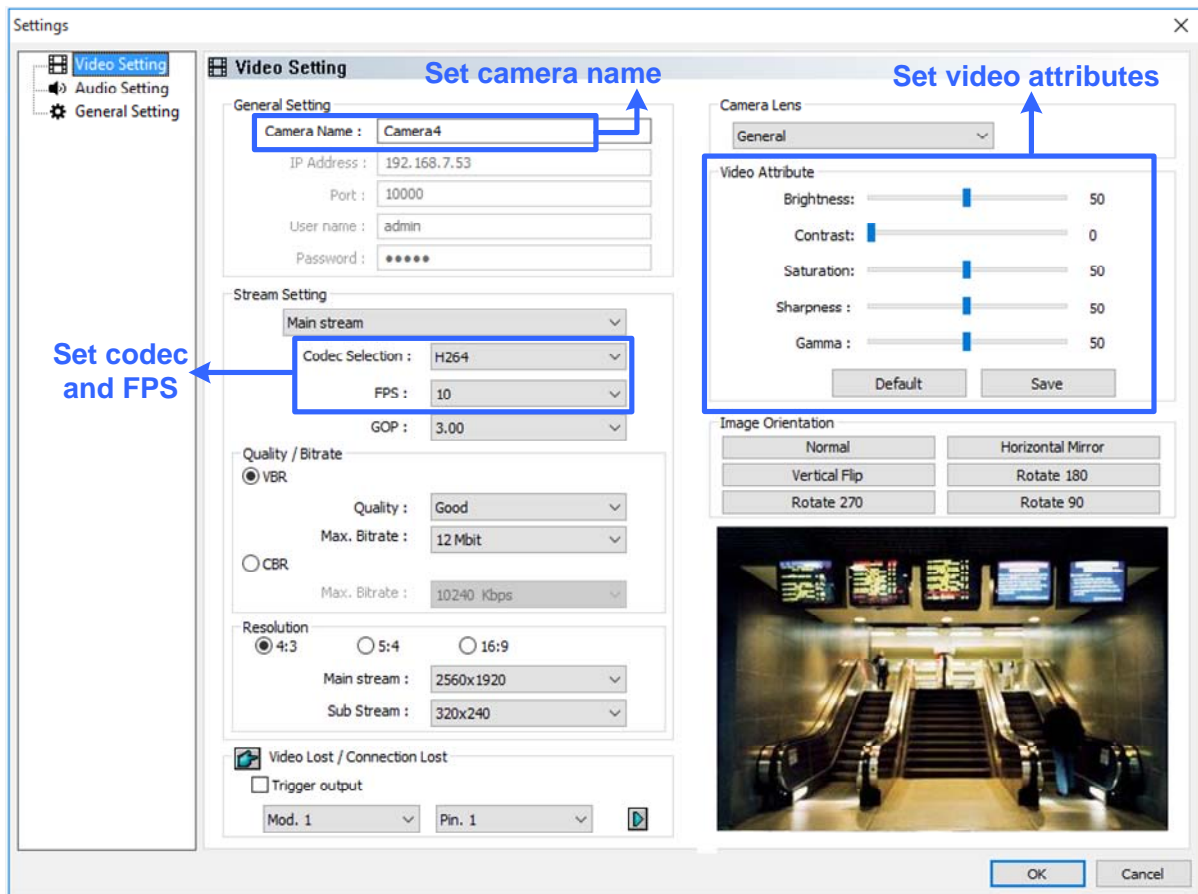


Figure 3-2

[Audio Setting]

In Audio Setting, you can enable audio functions for live view and recording, which are disabled by default.

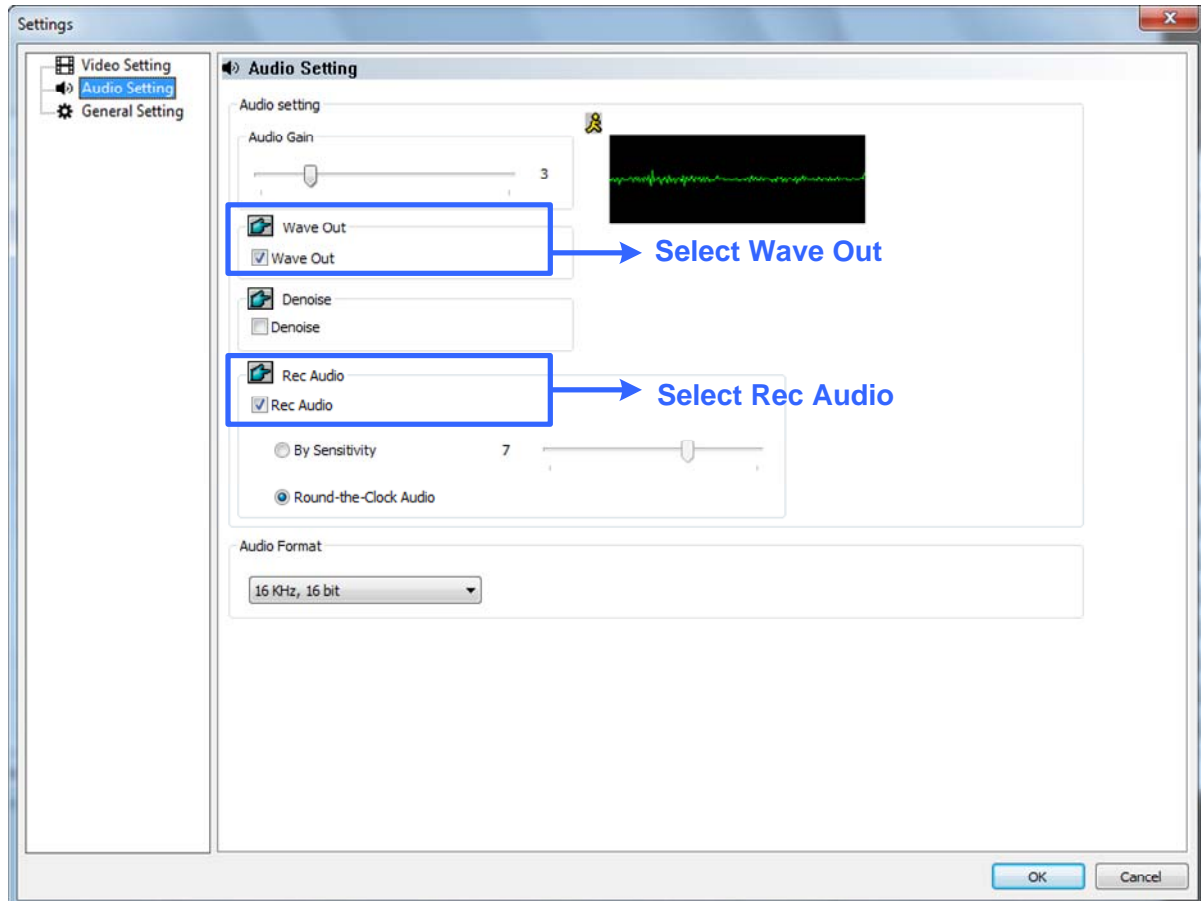



Figure 3-3

1. To enable audio in camera live view, select **Wave Out**.
2. To enable audio recording, select **Rec Audio** and then select **By Sensitivity** or **Round-the-Clock**.

Note: After Wave Out is enabled here, you can enable audio on the live view of the camera by clicking the **Tools** icon  and select **Set to Wave Out**.

[General Setting]

In General Setting, you can configure Network timeout setting, on-demand display, live view frame rate, and recording frame rate settings.

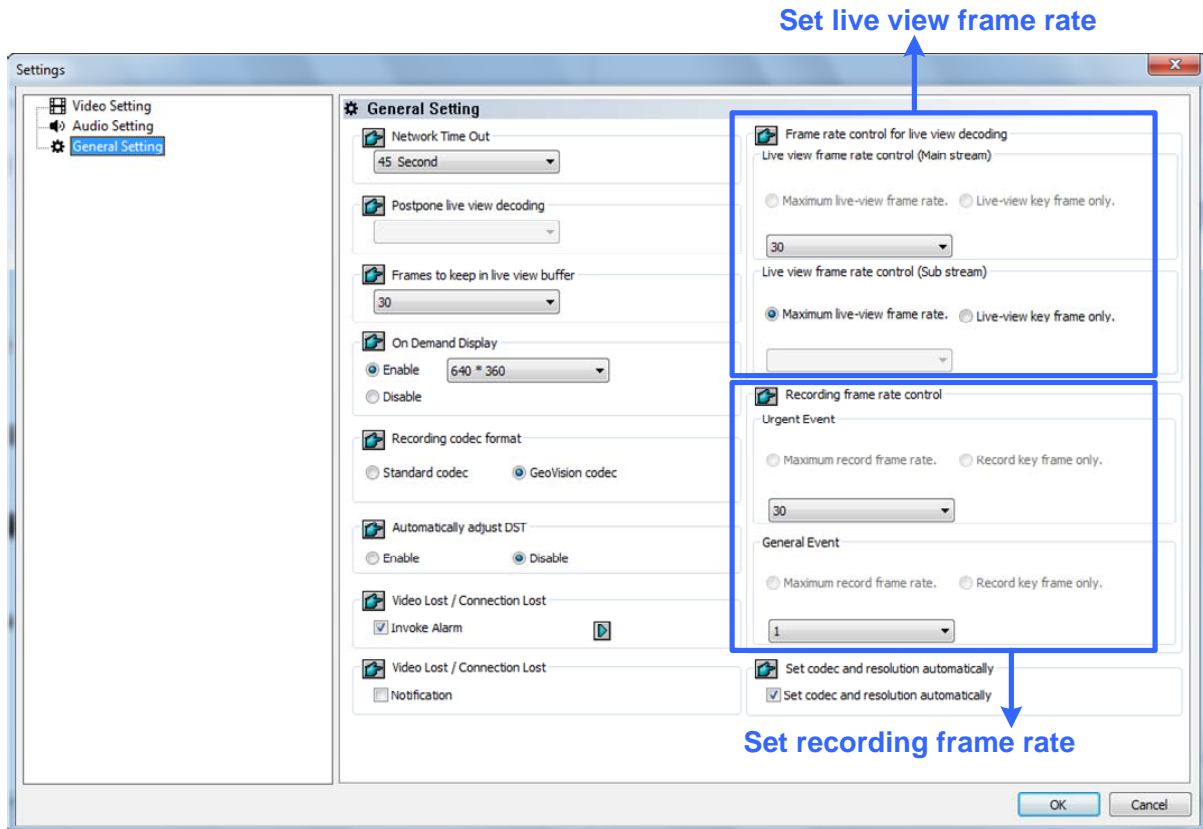


Figure 3-4

1. Under Live view frame rate control (Main / Sub Stream), you can set the live view frame rate.
 - When using **MJPEG**, every frame is a key frame, so you can specify the number of key frames to decode for live view.
 - When using **H.264**, only 1 key frame is transmitted per Group of Pictures (GOP), so you can decode **Key frames only** to omit all intermediate frames or **Max. frame** to include key frames and all intermediate frames.

Note:

1. The **GOP** setting can be configured in the **Video Setting** dialog box (*Figure 3-2*). A GOP of 30 means that there is 1 key frame for every 30 frames, so an IP device with a frame rate of 30 fps will have 1 key frame per second.
 2. You can change the camera's main stream and sub stream to **H.264** or **MJPEG** in the **Video Setting** dialog box (*Figure 3-2*). After changing codec, you need to click **OK** to apply the change before switching to the General Setting. Note that changing the camera's main stream and sub stream to **H.264** or **MJPEG** will affect the frame rate setting options under General Setting.
-

2. Under Recording frame rate control, define the recording frame rates for **Urgent event** and **General event**. Refer to the step above for details on the options.

For example, if you are using H.264, you can select **Max. frame** for Urgent events and select **Key frames only** for General events. Make sure the related settings are configured accordingly in the Recording Settings dialog box as described in step 5 of 3.1 *Configuring Recording Settings* in this Quick Start Guide.

For more details on Video Setting, Audio Setting, and General Setting, see *Configuring Individual IP Cameras*, Chapter 2, *GV-VMS User's Manual*.

Chapter 4 Live View


4.1 Arranging Live View Layouts

Follow the steps below to create new live view layouts.

1. In the Content List (**Home**  > **Toolbar**  > **Content List** ) , click **Layout**.



Figure 4-1

2. To add a layout, click the **Add** button  and click **Add Layout**. This dialog box appears.

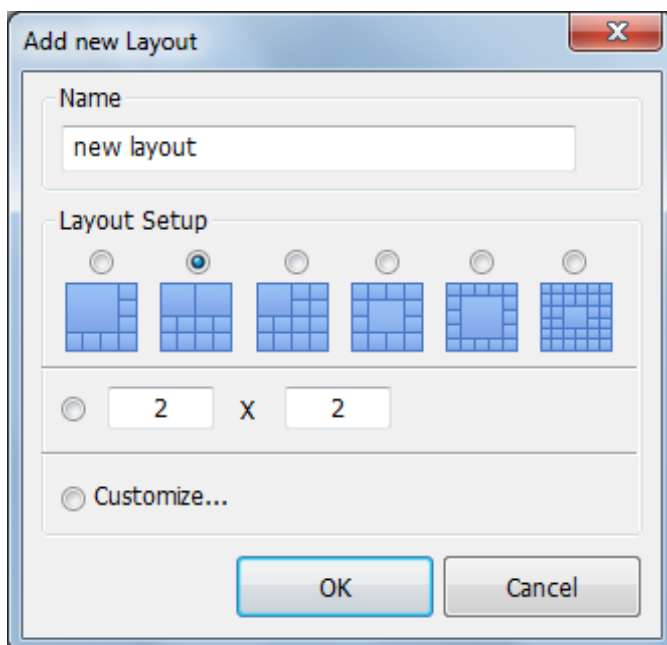


Figure 4-2

3. Name the new layout.

4. You can select an existing layout under **Layout Setup** or specify the number of live views in each row and column of the grid.
5. To create your own layout,
 - a. Select **Customize** and click **OK**.
 - b. Click the **Reset** button to specify a dimension for the grid.

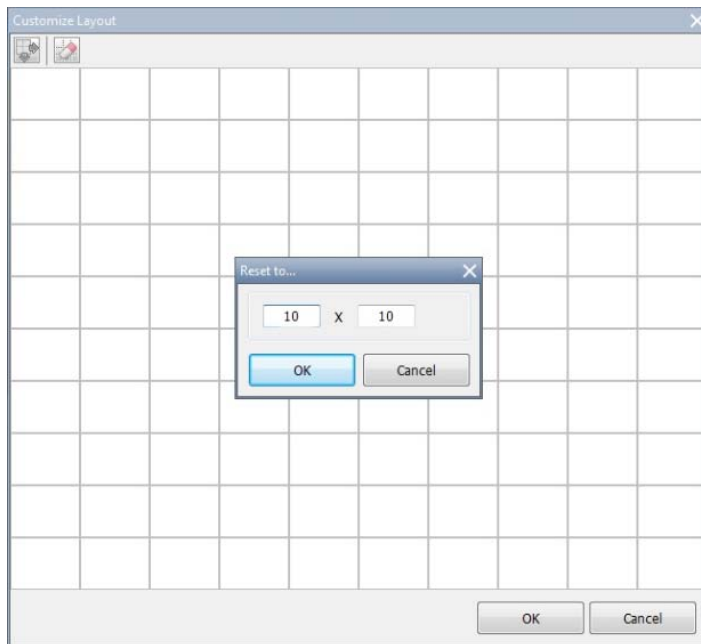


Figure 4-3

- c. Select multiple squares and click the **Merge** button to create a larger square.

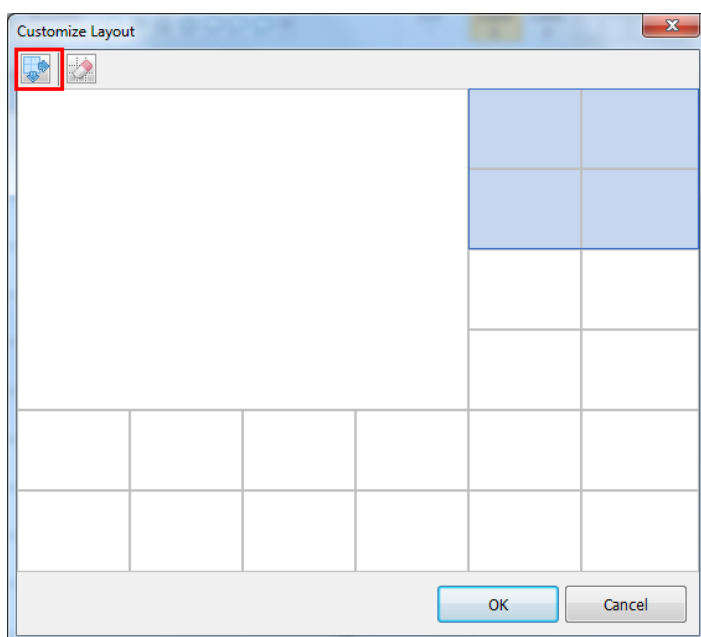


Figure 4-4

6. Click **OK** when you are done.





A message appears. Click **Yes** if you want to automatically assign the cameras to the new layout. Alternatively, you can click **Camera** in the content list and drag the cameras to the live view.

4.2 Functions on the Live View

Place the mouse cursor on the camera live view to see the icons below.



Figure 4-5

Icons	Functions
Instant Play 	Plays back the video recorded in the last 10 seconds, 30 seconds, 1 minute, or 5 minutes.
Snapshot 	Captures a snapshot of the current live view.
Tools 	<p>Includes the following options:</p> <ul style="list-style-type: none"> • Monitor: Starts monitoring the camera. • Talk Back Toggle: Talks to the surveillance site from the PC. Only one camera can be enabled at a time. • Properties: <ul style="list-style-type: none"> - Show Caption: Shows camera name on live view using the specified font size. - Keep Image Ratio: Locks aspect ratio of the camera image. • Close: Removes the camera from the layout grid. <p>The following options are available when related function is enabled:</p> <ul style="list-style-type: none"> • Set to Wave Out: Enables live view audio. (See [Audio Setting] in Section 3.2) • PTZ Control: Enables PTZ functions. (See Section 4.4) • Add to bookmark: Bookmarks a scene to watch later in ViewLog. This function is only available when the channel is recording.
Zoom 	Switches the live view to full screen. If there is a designated Zoom window, clicking the Zoom button will replace the live view in the zoom window instead.

The live view screen can be controlled using the actions below.

Actions	Functions
Mouse scroll	Zooms in or out on the live view.
Double-click	Displays the live view in full screen.

4.2.1 Zoom Window

You can designate a Zoom Window to quickly see a close-up view of the camera image without changing the live view layout.

1. In the Content List, select **Layout**, click **Windows** and drag **Zoom Window** to a live view grid.

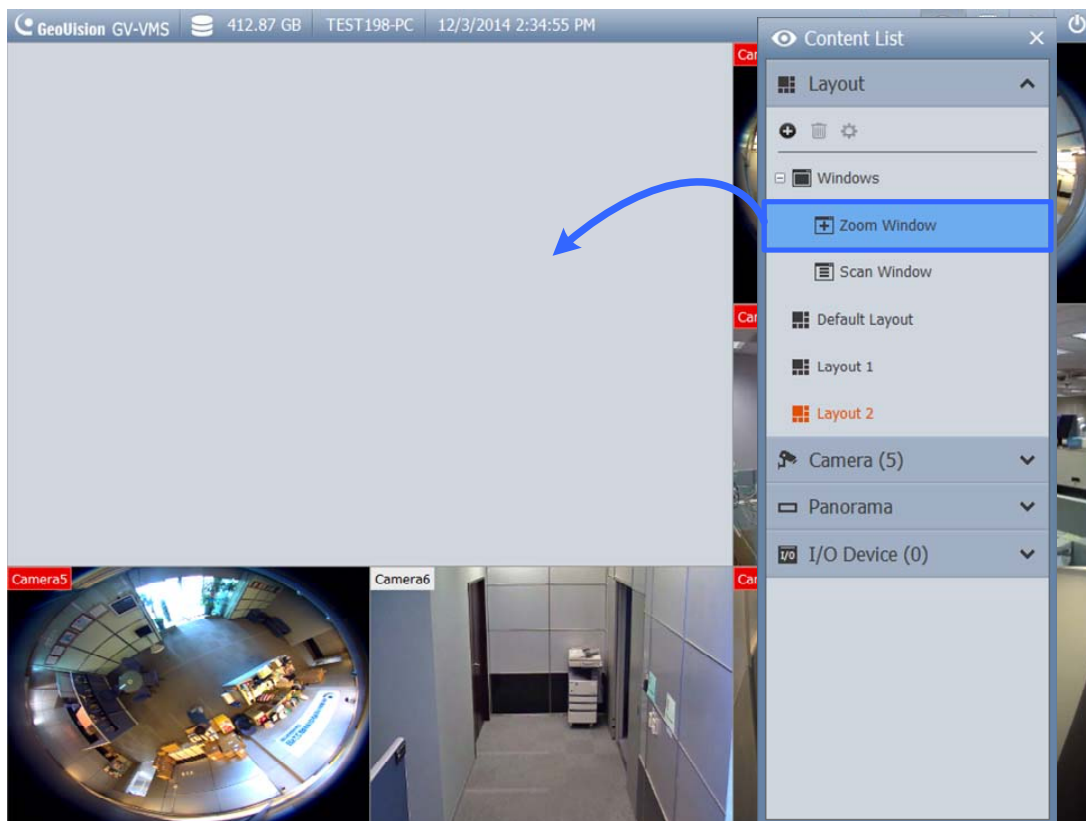



Figure 4-6

2. Move the mouse cursor to a camera live view and click the **Zoom** button  in the top-right corner. The camera live view is displayed in the Zoom Window.

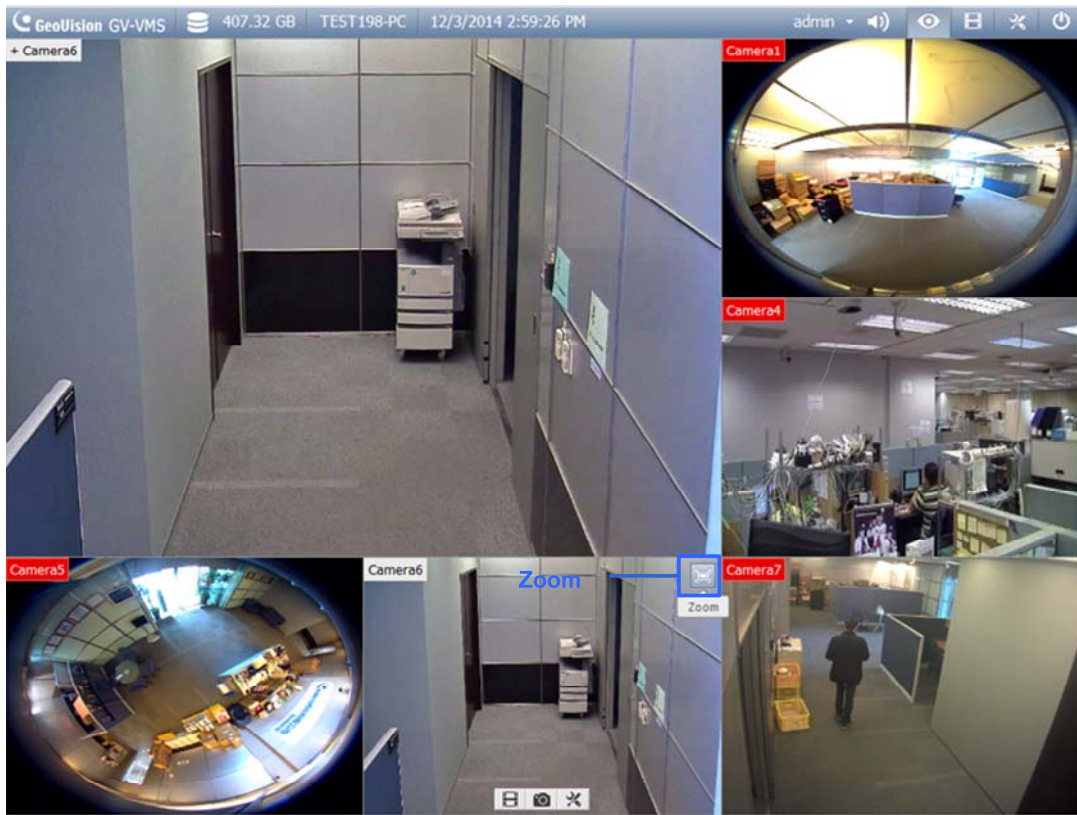



Figure 4-7

3. To remove the camera from the Zoom window, place the cursor on the live view, click the **Tools** icon  and select **Close**. To change the live view grid back to a normal window, repeat this step again to close the Zoom Window.

4.2.2 Scan Window

You can assign multiple cameras to a Scan Window, and each camera will be shown in sequence for the Scan Interval specified.

1. In the Content List, select **Layout** and drag **Scan Window** to a live view square.
2. Drag multiple cameras into the Scan Window.

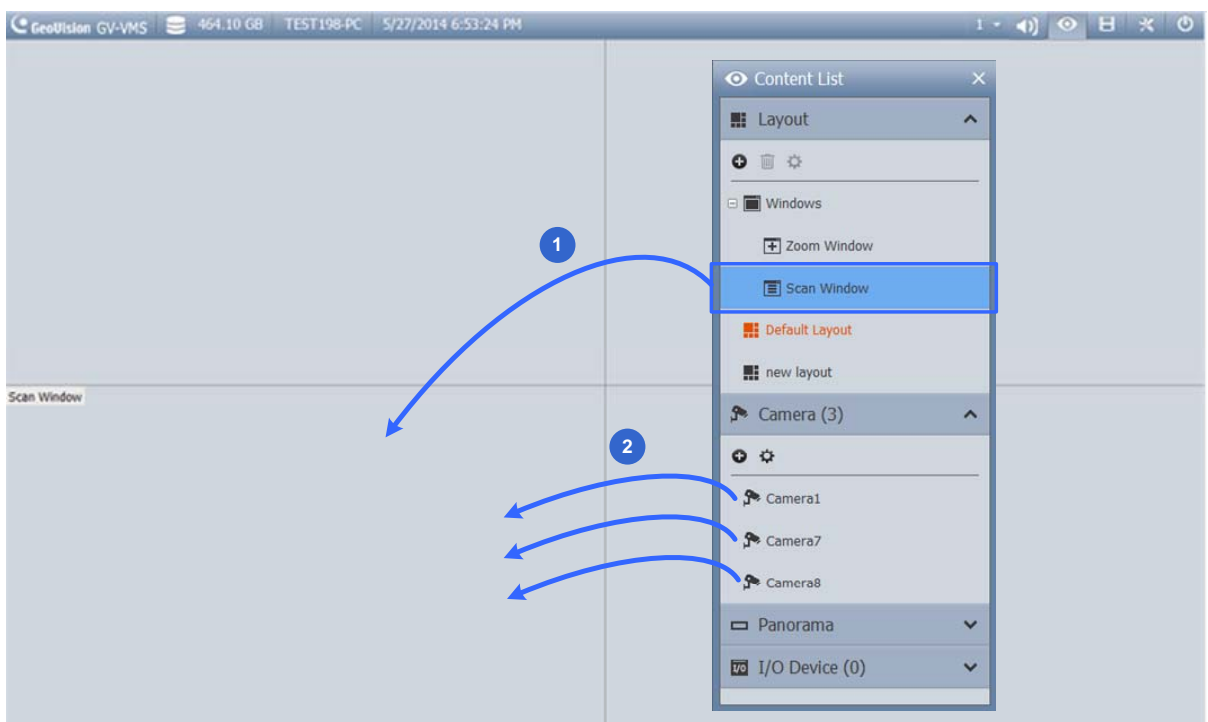


Figure 4-8

3. Move the cursor to the Scan Window, click the **Tools** icon , and select **Properties**.

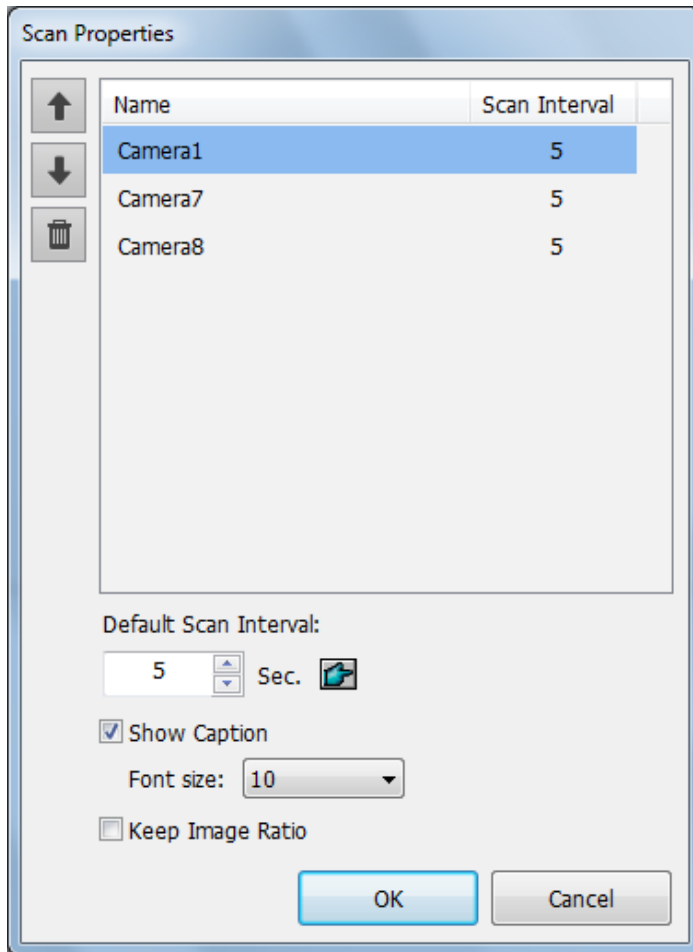


Figure 4-9

4. To adjust the order of a camera, click the Up and Down arrows.
5. To specify how many seconds to show the live view, click and adjust the **Scan Interval** of each camera. In the figure above, each camera will be shown for 5 seconds.

4.2.3 Focus View and PIP

Focus View

You can create up to 7 close-up views per camera and place these created close-up views inside live view grid. This function is not supported for Fisheye Cameras and PTZ Cameras.

1. In the Content List, right-click a camera and select **Focus View Setup**. A dialog box appears.

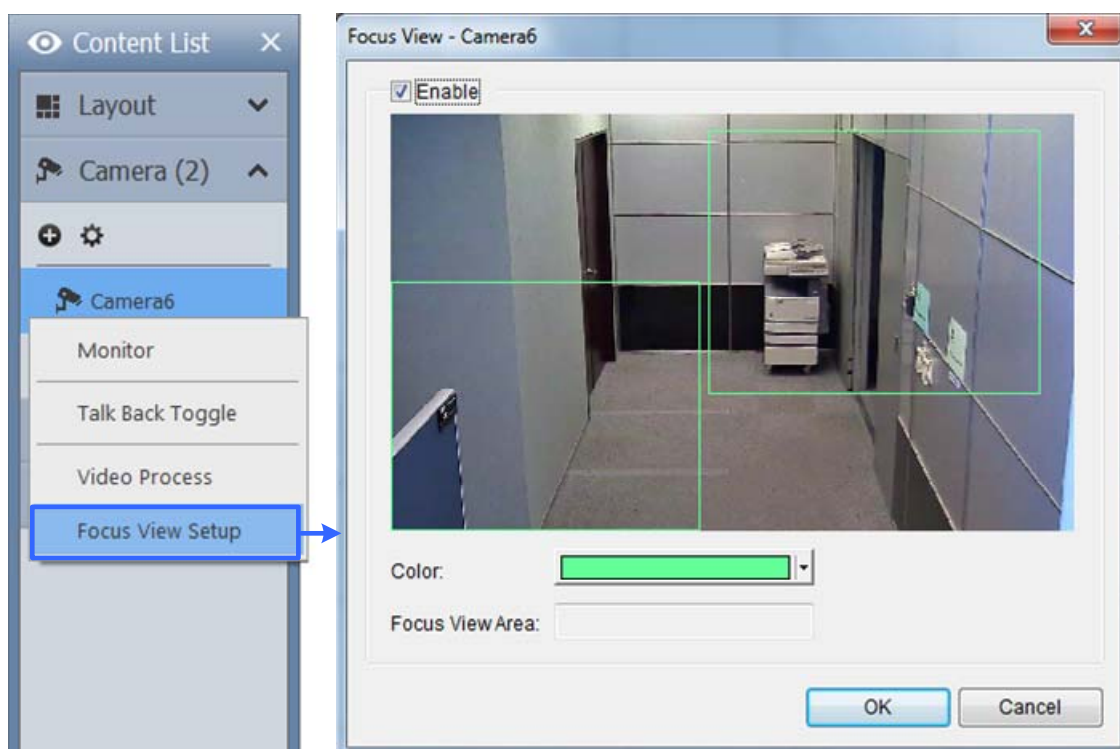


Figure 4-10

2. Click **Enable** and draw a box on the camera view to create a focus view. You can create multiple focus views if needed.
3. You can click the **Color** drop-down list to change the color of the box if needed.
4. Click **OK**. The created focus views are listed under the camera.

5. You can now drag the focus views to live view grids.



Figure 4-11

PIP View (Picture-in-picture)

1. You can zoom in on a camera by placing mouse cursor on its live view and scrolling the mouse. An inset window appears in the camera view with a navigation box inside.

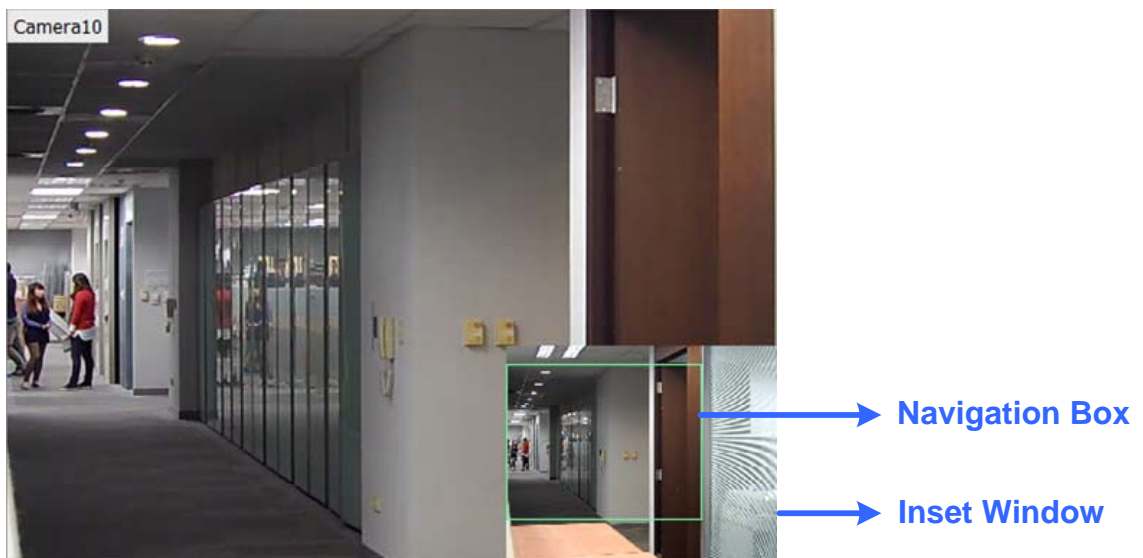


Figure 4-12

2. Move the navigation box around in the inset window to have a close-up view of the selected area.

4.3 Setting Up Fisheye Cameras

If you have added a fisheye camera, follow the steps below to access fisheye functions.

1. In the Content List, drag the entire fisheye camera (ex: Camera5) to the live view grid to see the circular source image or expand the camera and drag one of the dewarped fisheye images (ex: Quad View) to the live view grid.

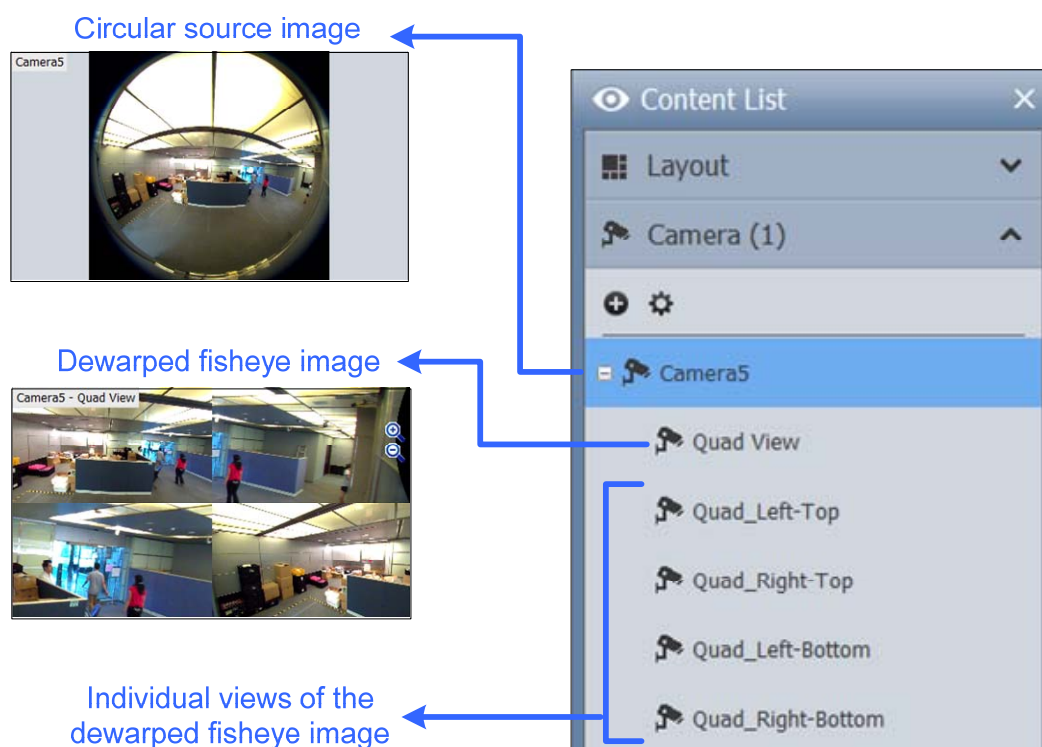


Figure 4-13

2. To change the fisheye mode or access other fisheye settings, right-click the fisheye camera (ex: Camera5) and select **Fisheye Settings**. A dialog box appears.

3. Right-click the camera view and select **Fisheye Option** to access the fisheye functions.

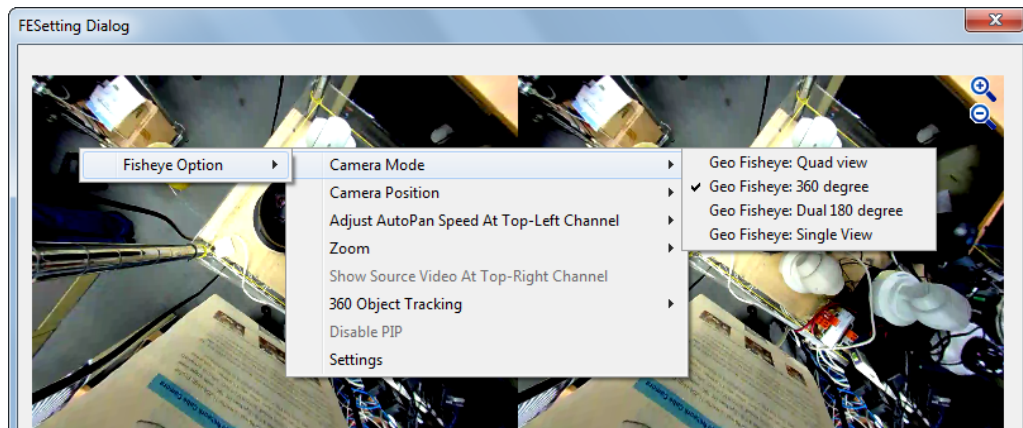


Figure 4-14

For details on the fisheye functions, see *Fisheye View*, Chapter 3, *GV-VMS User Manual*.

4.4 Setting Up PTZ Cameras


If you have added a PTZ camera, follow the steps below to enable PTZ functions.

1. Move the cursor to the camera live view and click the **Tools** button ✂.
2. Click **PTZ Control** to enable PTZ function.
3. Move the cursor to the live view to see the PTZ control panel.



Figure 4-15



Note: The PTZ control panel is hidden when live view resolution is less than 240 x 180.

4. In the PTZ control panel, you can click the **Home** button  to access advanced PTZ functions such as Preset Go, Cruise, Sequence and Tour.
5. In the Content List, right-click a PTZ camera and select **PTZ Setup** to configure PTZ speed and PTZ Idle Protection functions.

For details on the PTZ functions, see *PTZ Camera*, Chapter 1, *GV-VMS User Manual*.

Chapter 5 Video Processing

GV-VMS offers a number of video processing functions. To configure video processing functions, follow the steps below.

1. Click **Home** , select **Toolbar** , click **Configure**  and then select **Video Process**. This dialog box appears.

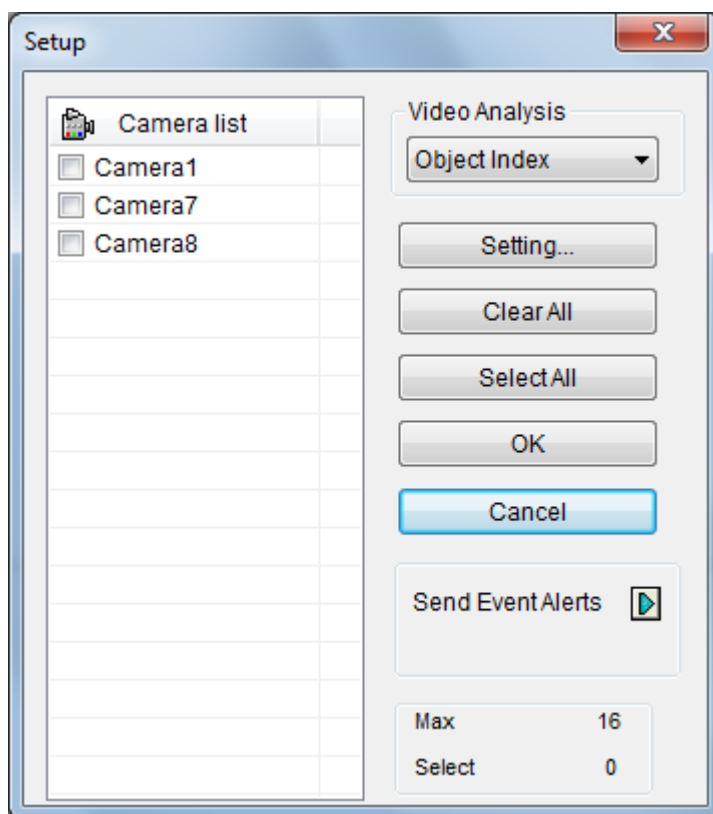



Figure 5-1

2. Select a function under **Video Analysis**.
3. In the Camera List, select the camera(s) you want to configure.
4. Click the **Setting** button to access the configuration page.
5. To send e-mail notification upon video analysis events, click the Arrow button  next to **Send Event Alerts**.

The following Video Processing functions will only be enabled when you **start monitoring** on the cameras.





- Object Index/Monitor Setup
- Counter / Intruder Alarm Setting
- Crowd Detection
- Advanced Unattended Object Detection
- Advanced Scene Change Detection
- Advanced Missing Object Detection
- Face Count
- Text Overlay Setting
- Heat Map
- Video Analysis by Camera (IPCVA)

If you have set an AVP schedule, Video Processing functions will be enabled and disabled according to the schedule whether the camera has started monitoring or not. See *7.2 Setting Up Schedules* in this Quick Start Guide on how to set a schedule.

For details on video processing functions, see *Chapter 3 Video Analysis, GV-VMS User's Manual*.

Chapter 6 Video Playback and Backup

6.1 Playing Back Recorded Videos

1. To access recorded videos, click the **ViewLog** icon  in the top-right corner.
2. Open the Content List by clicking **Toolbar**  and selecting **Content List** .
3. Click **Layout** in the Content List, click the **Add** button , and select **Add Layout** to create a new layout or select **Import from Live** to import existing layouts from live view.
4. You can also drag camera you want to play back onto the playback screen from the Content List if needed.

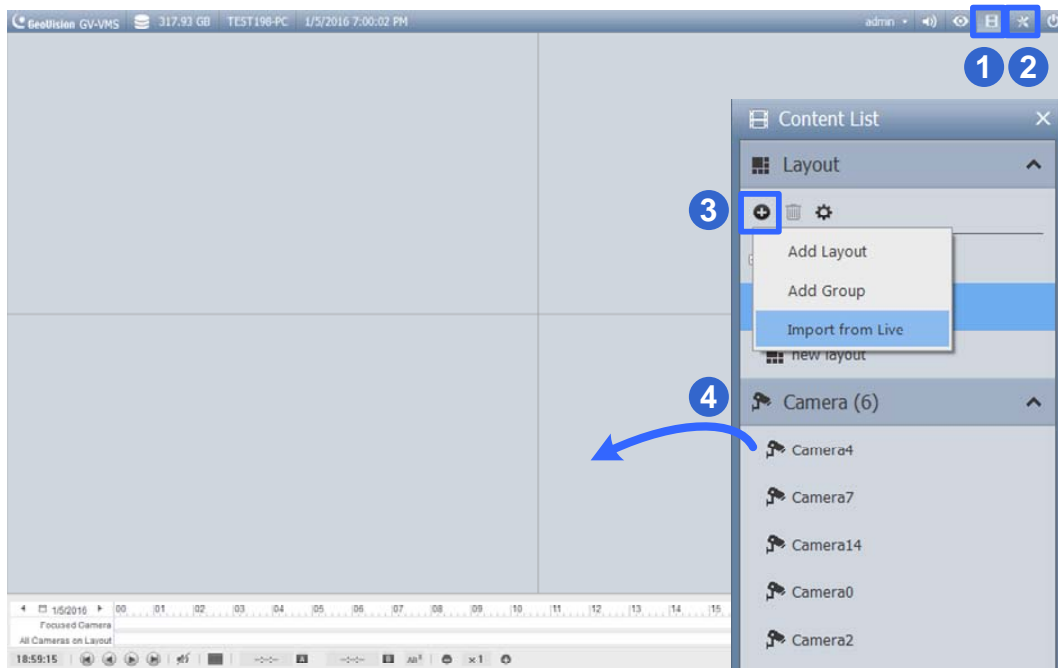


Figure 6-1

5. On the left of the timeline, select a date.

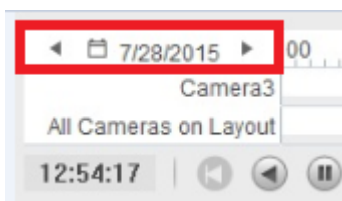


Figure 6-2

6 Video Playback and Backup

- Click on the timeline to select a time with video recordings. You can scroll the mouse to zoom in and out on the timeline.
 - Blue** areas: videos recorded in round-the-clock mode.
 - Red** areas: motion and other alarm events.
 - Orange** areas: Audio data available.

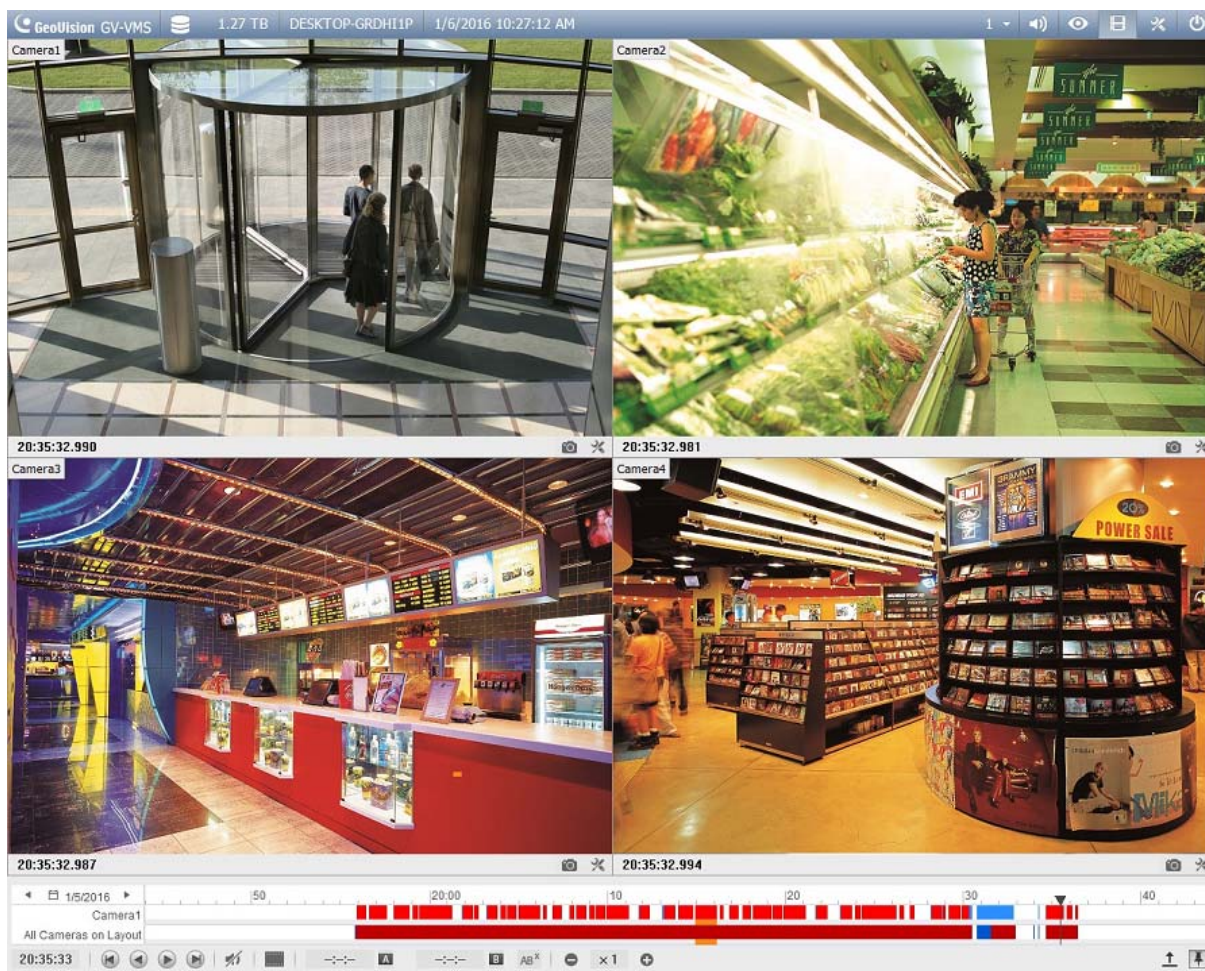




Figure 6-3

- Use the playback control buttons to play back recordings. Place the cursor on the buttons to see the name of the function.



Figure 6-4

6.2 Backing Up Recorded Videos

1. In ViewLog, click **Toolbar** , select **Tools**  and select **Backup**. This dialog box appears.

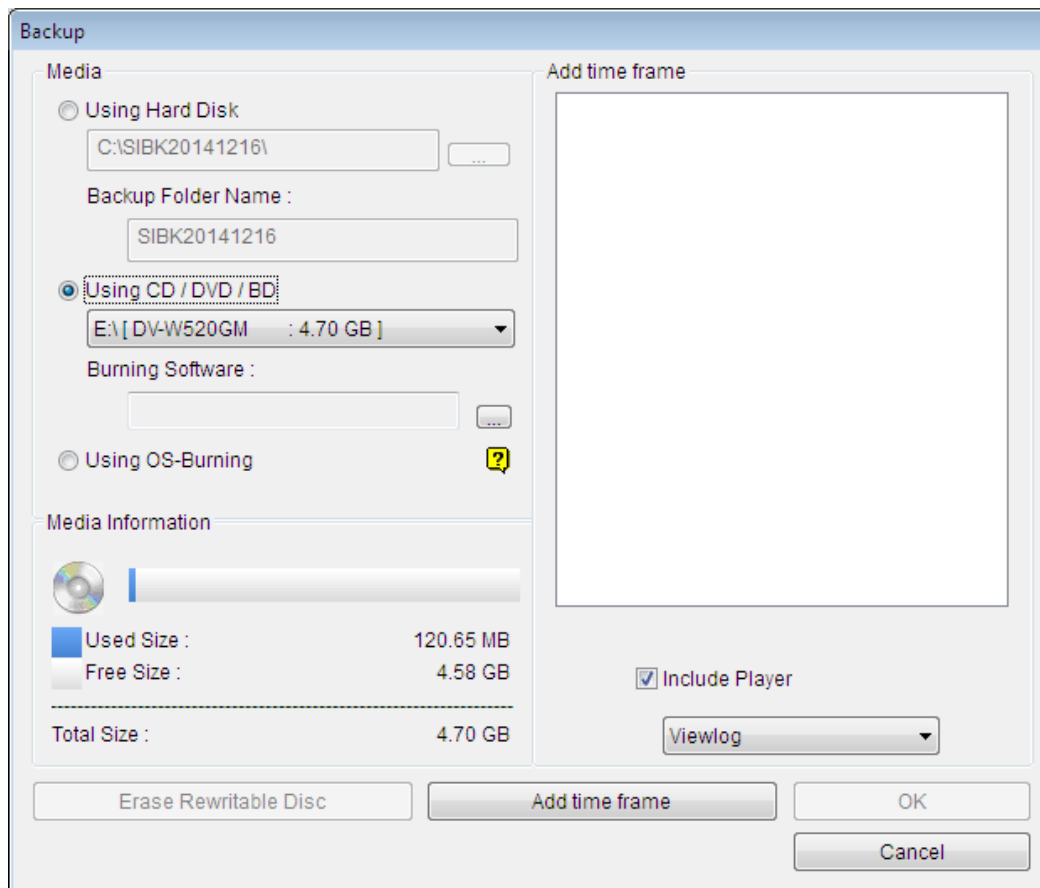





Figure 6-5

2. Click **Add time frame** to select the time period and the cameras you want to back up and click **OK**.
3. Select a media to back up the recorded files using **Hard Disk**, **CD / DVD/ BD** or **OS-Burning**. The supported software for burning to CD / DVD / BD is Nero Burning Rom version 9 or before.
4. To include the ViewLog player to the backed up files, select **Include Player** at the bottom-right of the dialog box. If no player is selected, you can only play the recordings using computer installed with GV-VMS or GeoVision video codec.

Chapter 7 Other Important Features

7.1 Setting Up I/O Functions

Follow the steps below to set up I/O devices on GV-VMS:

1. Click **Home** , select **Toolbar** , click **Configure** , click **Accessories** (if available), click **I/O Device** (if available) and then select **I/O Device Setup**. This dialog box appears.

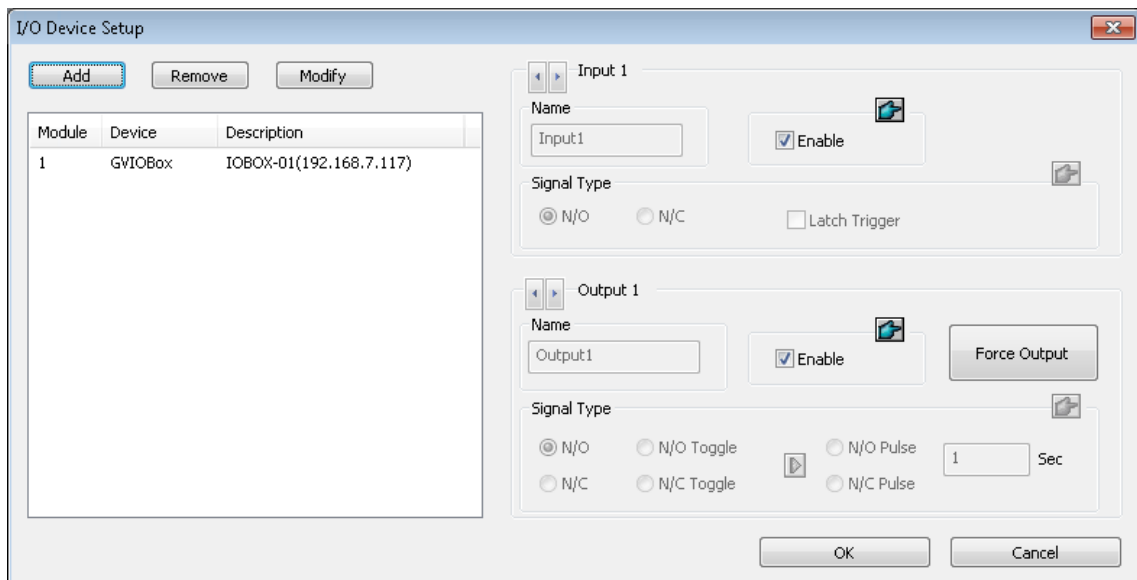




Figure 7-1

Note: The **Accessories** option only appears when GV-Keyboard or GV-Joystick has been set up on the GV-VMS. The **I/O Device** option only appears after at least one I/O device has been added.

2. Click the **Add** button.
3. Select the type of device you want to add and configure its connection settings.
4. For I/O devices connected through USB, you can configure **Signal Type** and **Latch Trigger** on GV-VMS.

- After the I/O devices are added, select **Toolbar** , click **Configure** , click **Accessories** (if available), click **I/O Device** and select **I/O Application Setup**. This dialog box appears.

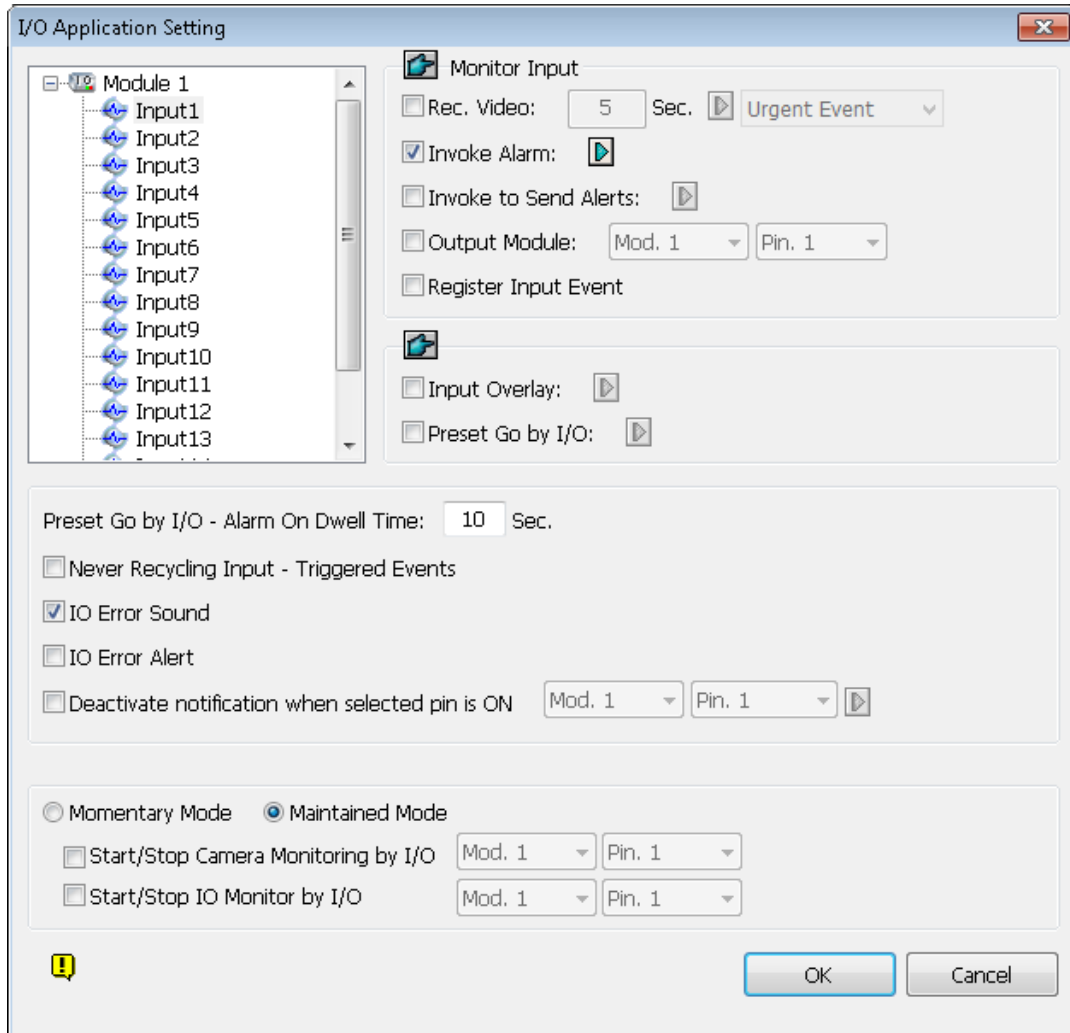








Figure 7-2

- Select an input and specify the actions to take when the input is triggered.
- Click **OK** to apply the settings.
- To activate I/O functions, click **Home** , select **Toolbar** , select **Monitor** , and then click **I/O Monitoring** or **Start All Monitoring**.

For details on I/O setup, see *Chapter 6 I/O Applications, GV-VMS User's Manual*.

7.2 Setting Up Schedules

You can create a schedule to enable and disable recording, video analysis, I/O monitoring, connection with Center V2 / Vital Sign Monitor and PTZ object tracking at specific times each day.

1. Click **Home** , select **Toolbar** , click **Configure**  and then select **Schedule Edit**. This dialog box appears.

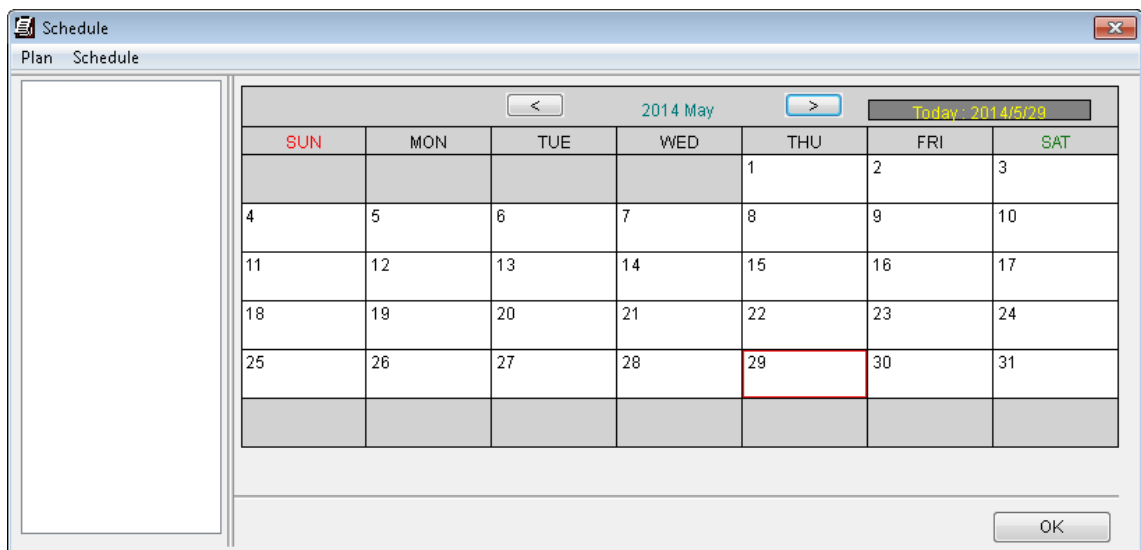


Figure 7-3

2. Click **Schedule** and select **Setup Wizard**. The Setup Wizard dialog box appears.
3. Select the days you want to apply the schedule and click **Next**.
4. Name the schedule plan and click **Next**.
5. Select a button on the left (**Camera**, **AVP**, **I/O Monitoring**, **Server** or **PTZ Object Tracking**) and drag across the timeline to enable it during that time.

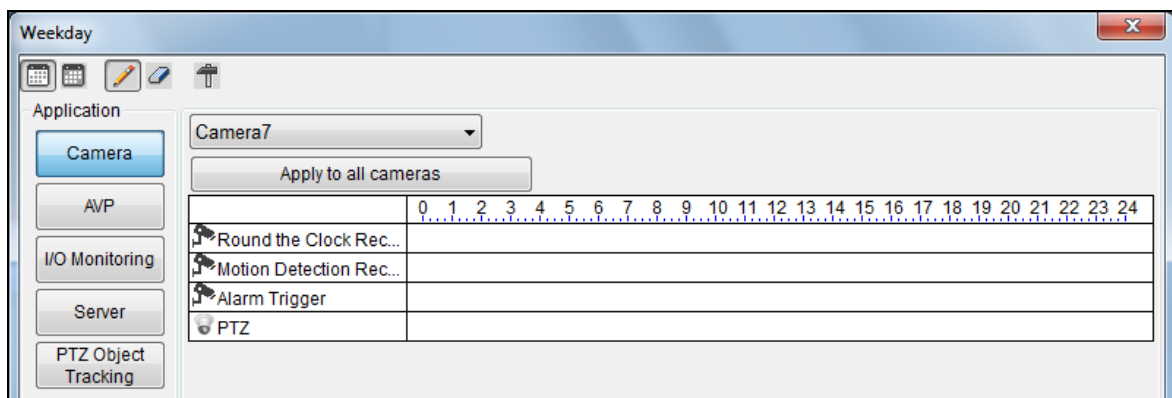


Figure 7-4

To set a recording schedule, click the **Camera** button and select a camera. Using the figure below as an example, 8 am to 5 pm are set to round-the-clock recording. The remaining hours are set to motion detection recording with a sensitivity level of 9.

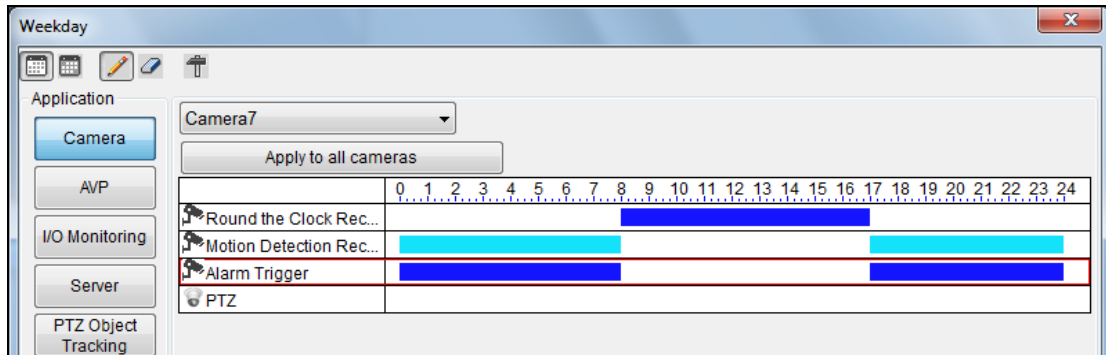


Figure 7-5

6. Click **Next** and **Finish** when you are done. The plan created appears on the calendar.

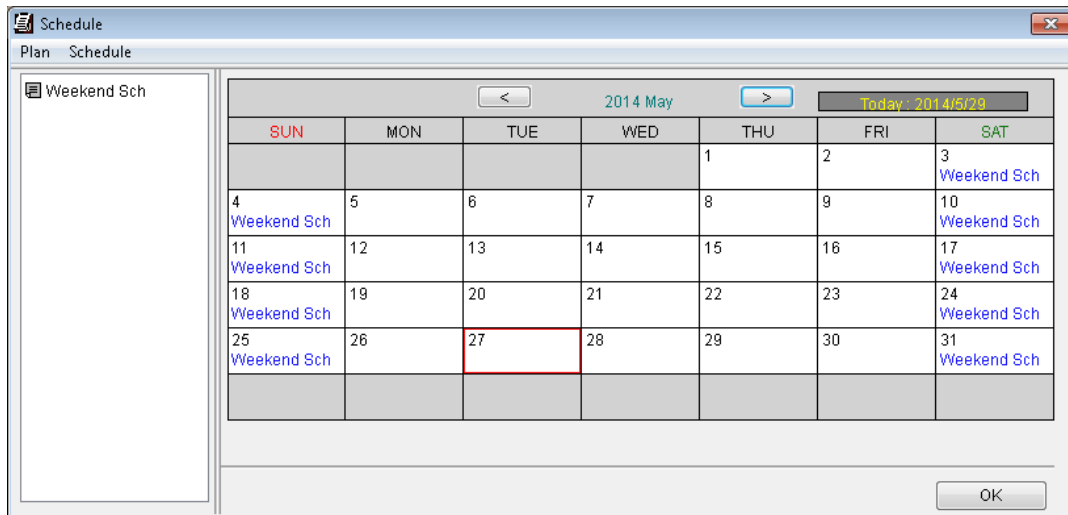





Figure 7-6

Tips:

1. You can add multiple plans to the calendar.
2. You can also add a plan to the calendar by dragging an existing plan and dropping it on a date in the calendar.

7. Click **Home** , select **Toolbar** , select **Monitor** , and then click **Start Schedule Monitoring**.

For details on setting schedule, see *Schedule*, Chapter 1, *GV-VMS User's Manual*.

7.3 Setting Up E-mail Alert Notifications

You can set up e-mail notification to receive alert upon motion, I/O trigger and video analysis events.

1. Click **Home** , select **Toolbar** , click **Configure** , select **System Configure**, and then select **Send Alerts Approach Setup**. This dialog box appears.

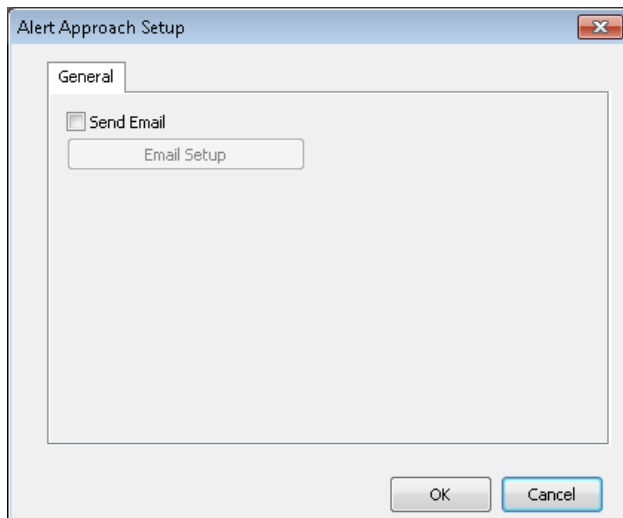


Figure 7-7

2. Select **Send Email**. The E-mail Setup dialog box appears.

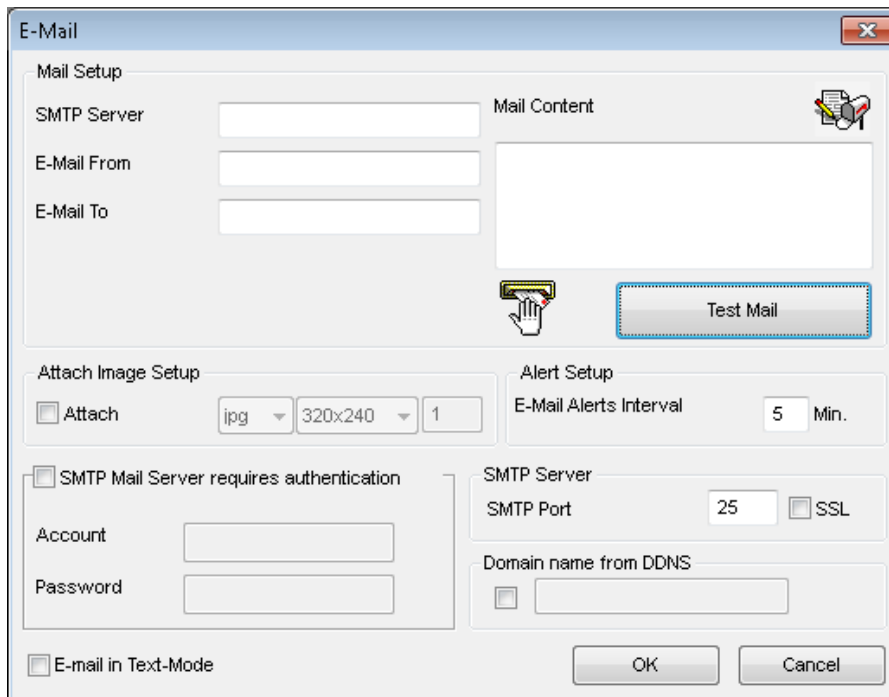


Figure 7-8

3. Set up your mail server and then send a test e-mail to make sure the setup is correct.