

**6MP Explosion Proof HD Security Camera - C1D1, C2D1 - Optical & Digital Zoom - IP67 - PoE -
ATEX / IECEx Rated
ATEX-EXPCMR-IP-POE-OZ-6MP**

Please see last page for supporting documentation for this product(certificates, CAD files & drawings, IES files, wiring diagrams, etc).



ATEX-EXPCMR-IP-POE-OZ-6MP Explosion Proof Remote Observation Camera

Dimensions: 12.34"L x 3.96"W x 4.22"H
Camera Weight: 3.7 lb
Total Watts: 12W (Heater Off), 18W (Heater On)
Voltage: NA (PoE)
Image Sensor: Progressive Scan CMOS
Imager Size: 1/1.8"
Color: Yes
Signal System: NTSC
Connectors: Terminal Strips
Effective Pixels/Resolution: 3072(H) * 2048(V)
Aspect Ratio: 3:2
Megapixels: 6MP
Min. Illumination: 0.1 Lux @ F1.2 AGC On / 0 Lux (w/ Built-in IR)
Lux: 0 (B/W), 0.014 (Color)
AGC Control: Selectable
Relative Aperture (F-stop): F1.4
FOV: 94.5° (Wide) - 30.5° (Tele)
Focus: Auto
Lens Iris: DC Driven
Shutter Speed: 1 ~ 1/100,000 sec
Lens Type: Varifocal
Lens: 2.8-12mm Focal Length
Day/Night: True D/N w/Mechanical Cut Filter
Infrared Light: Built-in
Digital Noise Reduction: 3D DNR
Dynamic Range: 120 dB
Video Framerate: 6.0MP @ 24fps
Video Offload: MP4
Video Streaming: Tri
Video Output: CAT6 Ethernet - RJ45
Ethernet Ports/Speed: 1; 10/100
PoE: 802.3af/802.3at
Audio: Yes
Audio Compression: G.711/G.722.1/G.726/MP2L2
Audio Streaming: Two Way
Protocols: TCP/IP, HTTP, HTTPS, DHCP, UDP, RTP, RTSP and More
Bit Rate: 32 kbps - 16 Mbps
Compression: H.264, H.264 OVC, MJPEG
Signal to Ratio: >62 dB
Settings: Remote Configuration, Remote Viewable, Email Notification, Event Log, Event Notification, Selectable Frame Rate, Privacy Video Block, Video Analytics Capable

Ratings / Features

Listed for Europe & International
Approved for Zone 1 & Zone 2
Approved for Zone 21 & Zone 22
ATEX EX II 2 G
ATEX EX II 2 D
IECEX Ex db IIC Gb IP66
IECEX Ex tb IIIC Db IP66
NEMA 3R, 4
NRTL Listed to EN 60079
NRTL Listed to IEC 60079
Outdoor Camera
Seamless Power (PoE)

Card Reader Type: Micro SD Card (Not Included)

Storage: Up to 128GB

Language: English

Browser Support: Yes

Ambient Temperature Range: -40°C to +60°C

Operating Humidity: Up to 95% (Non-condensing)

Housing Materials: Aluminum

Lens Material: Tempered Glass

Mounting: Adjustable Bracket

Wiring Hub: (2) 3/4" NPT

Special Orders/Requirements

Contact us for special requirements

Toll Free: 1-800-369-6671

Intl: 1-214-616-6180

Fax: 1-903-498-3364

E-mail: sales@larsonelectronics.com

The ATEX-EXPCMR-IP-POE-OZ-6MP from Larson Electronics is an Explosion Proof Camera that is ATEX / IECEx rated and is designed for security and remote observation in both indoor and outdoor hazardous environments. This 6.0MP HD high resolution security camera features a 150° range, 10x optical zoom with autofocus and 62x digital zoom for maximum coverage and accuracy. Equipped with built-in infrared, the monitoring device supports Power over Ethernet (PoE) from data cables (no power cord needed).

Camera Features: The ATEX-EXPCMR-IP-POE-OZ-6MP flameproof security camera provides operators in hazardous areas with crisp 6.0MP high resolution images. A 2.8-12mm motorized lens automatically adjusts focus, providing operators with a precise 10x optical zoom and autofocus and 62x digital zoom image. This camera measures a compact 12.34" x 3.96" x 4.22" and the mounting base allows for precise aiming with 90° of vertical adjustment. The remote inspection camera utilizes a true day/night IR-Cut Filter Removal to produce clear images in variable and low light conditions.

The explosion proof unit comes with built-in infrared lights. For additional infrared illumination, an external infrared light can be used with the explosion proof device (not included). For 12-24V DC applications, we recommend the Larson Electronics 12-watt explosion surface-mount infrared LED light ([EXHL-TRN-LE3-IR-1224](#)). As an alternative, we also offer the [EXHL-TRN-LE3-IR-1227](#) for 120-240V AC applications.

The ATEX-EXPCMR-IP-POE-OZ-6MP flameproof security camera is built to perform under harsh and rugged conditions. This IP67 rated waterproof unit resists the corrosive effects of weather, dust, dirt, and humidity. This ATEX / IECEx rated camera provides property and product security while also protecting operators with its safe and reliable explosion proof and weatherproof design.

Power/Wiring: This flameproof unit is designed to operate on PoE, allowing the device to receive power directly from the data cable. Link-up with the camera is achieved via a customer provided, standard stranded cable, such as a CAT6 ethernet cable. The cable can be routed either through the mounting surface or through a cable guide at the edge of the mounting base.

Our explosion proof cameras with Power over Ethernet (PoE) features enable data transfers and power to be passed through a single Ethernet cable that is usually a Cat 3/Cat 5 cable or better. There are several types of PoE, which come with their own respective standard and maximum power to port capabilities. The IEEE 802.3af PoE standard, with a voltage range of 44.0 - 57.0V, offers 15.4W of DC power for each port. The IEEE 802.3at PoE standard, with a voltage range of 50.0 - 57.0V, provides up to 30W of DC power per port, which is ideal for surveillance cameras, antennas and network access points. The IEEE 802.3bt PoE standard, with a voltage range of 50.0 - 57.0V, provides 60W of DC power for each port. In order to utilize PoE properly, the components, such as the receiving unit and sending device, must be PoE compliant.

Mounting: The ATEX-EXPCMR-IP-POE-OZ-6MP explosion proof security camera is secured to flat surfaces, such as a ceiling or wall, using an adjustable reverse pedestal style bracket. The included mounting bracket allows 90° vertical adjustment and 360° of swivel for precision aiming.

Applications: Vessel, tank and reactor monitoring, remote observation of external facilities, offshore and land based rigs, indoor and outdoor security,

commercial buildings and more.

At Larson Electronics, we do more than meet your lighting needs. We also provide replacement, retrofit, and upgrade parts as well as industrial grade power accessories. Our craftsmen can custom build any lighting system and/or accessories to fit the unique demands of your operation. A commitment to honesty, quality, and dependability has made Larson Electronics a leader in the lighting and electronics business since 1973. Contact us today at 800-369-6671 or message sales@larsonelectronics.com for more information about our custom options tailored to meet your specific industry needs.

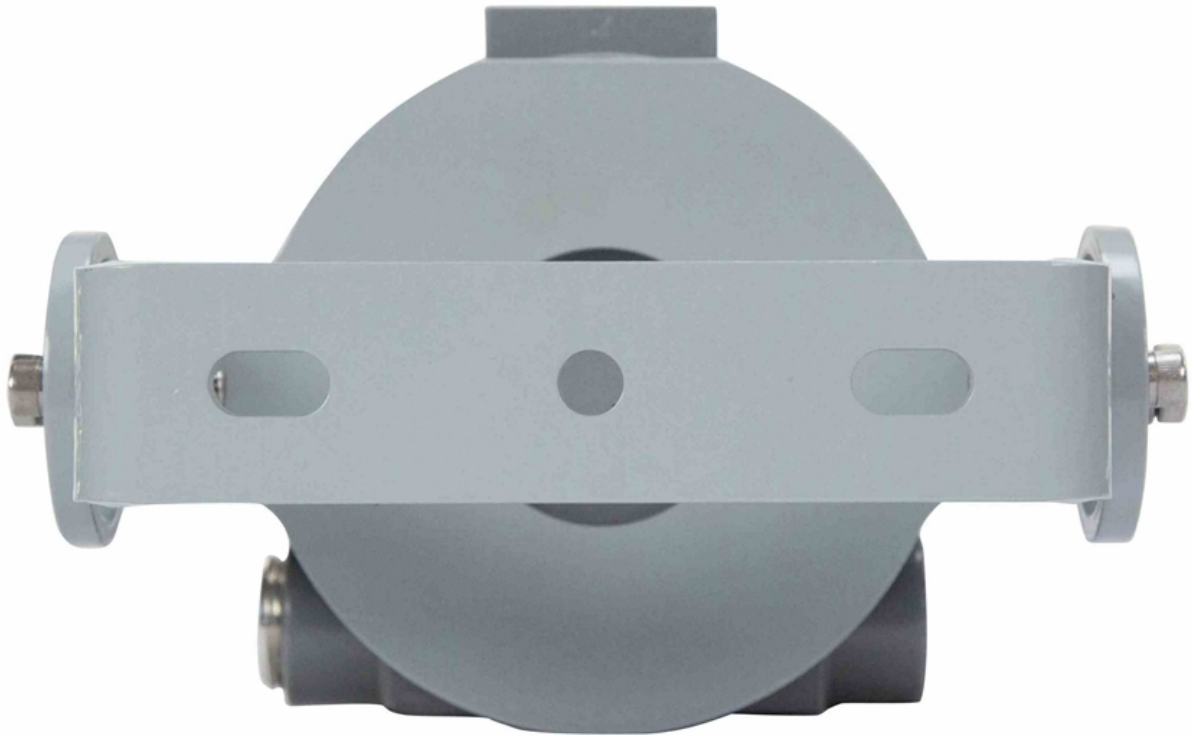


Frequently Asked Questions (FAQ)









Links (Click on the below items to view):

- [ATEX Certificate \(European Explosion Proof\)](#)
- [Canadian CEC Certificate \(Commonly referred to as CSA Certificate\)](#)
- [CE Certificate](#)
- [Certificate 1, Misc](#)
- [Certificate 2, Misc](#)
- [Certificate 3, Misc](#)
- [Certificate 4, Misc](#)
- [Dimensional Drawing 2D](#)
- [Eye Safety Information/Certificate](#)
- [IEC Ex Certificate \(International Explosion Proof\)](#)
- [MSDS \(Material Safety Data Sheet\)](#)
- [Operations Manual](#)
- [RoHS Certificate \(Restriction of Hazardous Substances\)](#)
- [STEP File \(3D CAD Model\)](#)
- [HigResPic1](#)
- [HigResPic2](#)
- [HigResPic3](#)
- [HigResPic4](#)
- [HigResPic5](#)
- [HigResPic6](#)
- [HigResPic7](#)
- [HigResPic8](#)
- [HigResPic9](#)
- [Video1](#)
- [Video2](#)
- [ISO 9001 Certification](#)
- [Business Certificate](#)
- [Shipping Time Map](#)