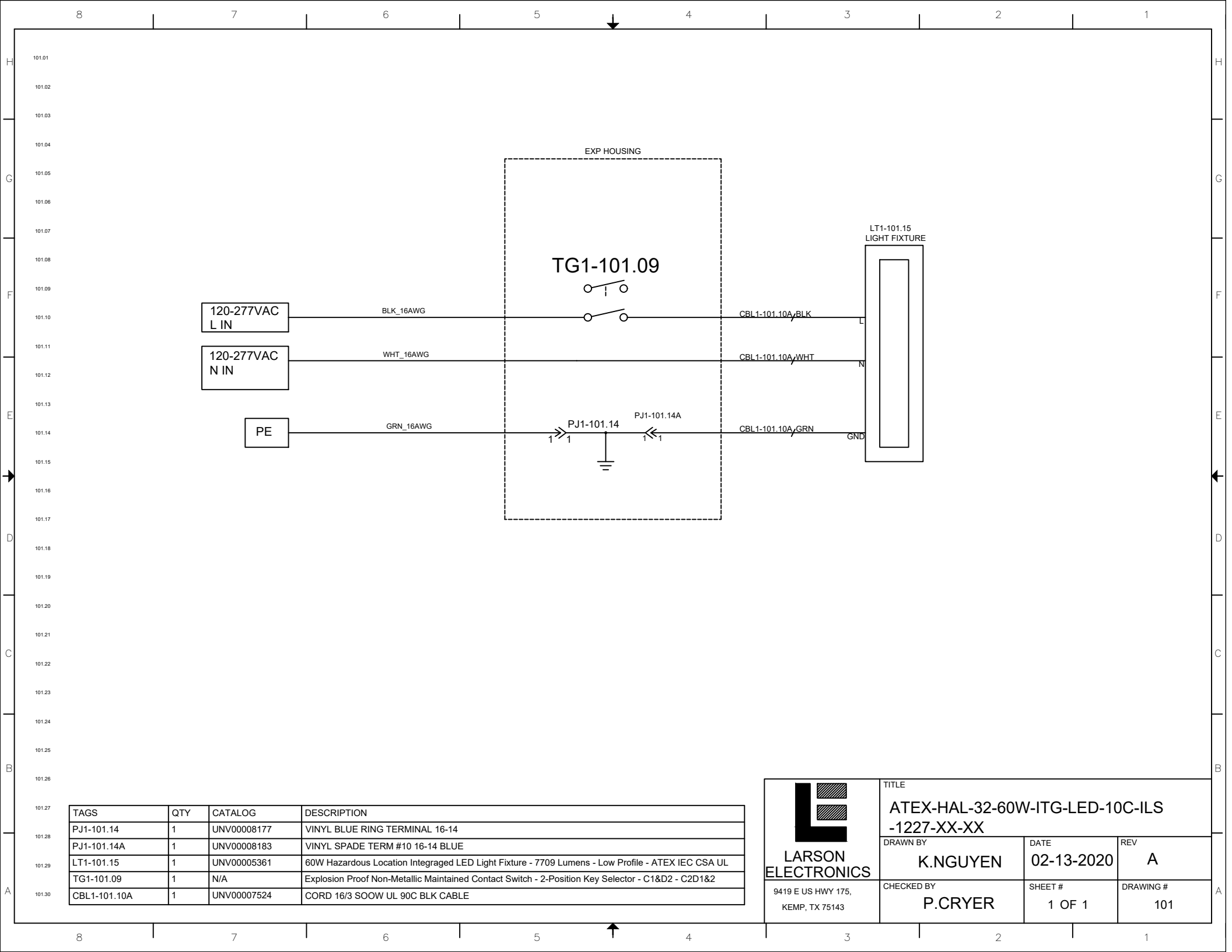



REV	DESCRIPTION	DATE
A	PRODUCTION RELEASE	02/13/2020

**ATEX-HAL-32-60W-ITG-LED-10C-ILS
-1227-XX-XX**





TAGS	QTY	CATALOG	DESCRIPTION
PJ1-101.14	1	UNV00008177	VINYL BLUE RING TERMINAL 16-14
PJ1-101.14A	1	UNV00008183	VINYL SPADE TERM #10 16-14 BLUE
LT1-101.15	1	UNV00005361	60W Hazardous Location Integraged LED Light Fixture - 7709 Lumens - Low Profile - ATEX IEC CSA UL
TG1-101.09	1	N/A	Explosion Proof Non-Metallic Maintained Contact Switch - 2-Position Key Selector - C1&D2 - C2D1&2
CBL1-101.10A	1	UNV00007524	CORD 16/3 SOOW UL 90C BLK CABLE

 LARSON ELECTRONICS 9419 E US HWY 175, KEMP, TX 75143	TITLE ATEX-HAL-32-60W-ITG-LED-10C-ILS -1227-XX-XX		
	DRAWN BY K.NGUYEN	DATE 02-13-2020	REV A
CHECKED BY P.CRYER	SHEET # 1 OF 1	DRAWING # 101	