

Please see last page for supporting documentation for this product(certificates, CAD files & drawings, IES files, wiring diagrams, etc).



**EHL-LP-48-LED-25C-EPP Explosion Proof Low Profile LED Inspection Light**

**Lamp Type:** LED

**Listing:** United States, Canada, Europe, Asia

**Dimensions:** 53.78"L x 6.89"W x 7.57"H

**Weight:** 22 lb

**Voltage:** Universal 100-277 V AC, 50/60 Hz

**Total Watts:** 80W

**Lumens:** 10,800

**Luminous Efficacy:** 135 Lm/W

**Lamp Life:** 60,000+ Hours

**Color Temp:** 5000K, 4500K, or 3000K

**Color Rendering Index:** >85 CRI

**Beam Angle:** 100° Horizontal, 140° Vertical

**Lighting Configuration:** Wide Flood Pattern

**Power Efficiency:** >95%

**Power Factor:** 0.992

**Amperage:** 0.67 A @ 120 V, 0.33 A @ 240 V, 0.29 A @ 277 V

**Ambient Operating Temp Range:** -50°C to +65°C

**Operating Temp Rating:** T6

**Housing Material:** Copper Free Cast Aluminum

**Lens Material:** Hardened Borosilicate Glass

**Mounting:** (2) Hooks for Horizontal or Vertical Mounting

**Wiring:** 25' 16/3 SOOW Cord w/ Explosion Proof Cord Cap

**Cord Cap Options:** 5-15P, 5-20P, or 6-20P

**Ratings/Approvals**

Class I, Division 1, Groups C and D

Class I, Division 2, Groups A, B, C, D

Class II, Divisions 1 & 2 Groups E, F and G

Class III, Divisions 1 & 2

T6 Temperature Rating

NRTL Certified to UL 844 Ed. 13

NRTL Certified to UL 1598

Certified to C22.2 No. 137 Rev 2014

Certified to C22.2 No. 250.0

Paint Spray Booth Approved

Factory Sealed Light Fixture

**Special Orders - Requirements**

Contact us for special requirements

**Toll Free: 1-800-369-6671**

**Intl: 1-214-616-6180**

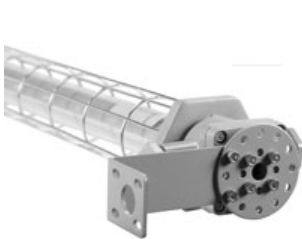
**Fax: 1-903-498-3364**

**E-mail: [sales@larsonelectronics.com](mailto:sales@larsonelectronics.com)**

**The EHL-LP-48-LED-25C-EPP from Larson Electronics is a Low Profile Explosion Proof LED Inspection Light that provides operators with a powerful and energy efficient alternative to traditional hazardous location luminaries. LED technology and compact design makes this lamp an excellent replacement upgrade option for bulky and high maintenance cost older fixtures. This explosion proof LED light has a T6 temperature rating and carries a paint spray booth, and is approved for use in United States and Canada markets. It is ideal for applications such as paint booths, oil rigs, offshore applications, petrochemical, manufacturing, chemical storage, water treatment centers, and food processing plants where a where flammable gases, vapors, or dusts exist or stand the potential to exist. The EHL-LP-48-LED-25C-EPP is equipped with 25' of 16/3 SOOW cord terminated in an explosion proof cord cap.**

This Class I Divisions 1 & 2, Class II Divisions 1 & 2 low profile explosion proof inspection light provides 10,800 lumens of high quality light while only drawing 80 watts. The copper free aluminum alloy body is powder coated for added durability and an attractive aesthetic appearance. Special heat dissipating design in conjunction with

LED technology helps this fixture to achieve an excellent 60,000 hour rated lifespan with 80% lumen retention at the 60,000 hour mark. Light weight and a low profile make this unit an attractive alternative to larger and heavier older fixtures and requires less hardware to install.



[Click Photo to Enlarge](#)



[Click Photo to Enlarge](#)



[Click Photo to Enlarge](#)

The EHL-LP-48-LED-25C-EPP from Larson Electronics is an integrated low profile linear explosion proof LED task light with a unique design. Instead of using diffused glass, optics, or reflectors to distribute the light, Larson Electronics has positioned the boards within the fixture to provide a wide area light without sacrificing quality or light output. Two offset LED assemblies within the fixture allow this explosion proof linear lamp to provide a brilliant 100° horizontal beam spread and 140° vertical beam spread while achieving a 10,800 lumen output to maintain a small form factor. The LED assembly is protected behind a tempered borosilicate glass tube that is protected by an aluminum wire guard to prevent from accident damage to the light fixture.

Measuring only 6.89" in width, this srop light takes up half the surface area as a standard four foot 2-lamp explosion proof fixture. The included pair of hooks allows this inspection light to be hung from either both ends or a single end depending on each work area it is used in. When compared to our EPL-48-2L-T6HO fixture, the EHL-LP-48-LED-25C-EPP fixture produces twice the light output while taking up less than half the surface area. The EHL-LP-48-LED-25C-EPP is an ideal for applications with little space where low profile fixtures are required.

**LED Benefits:** Unlike gas burning and arc type lamps that have glass bulbs, LEDs have no filaments or fragile housings to break during operation and/or transportation. Instead of heating a small filament or using a combination of gases to produce light, light emitting diodes (LEDs) use semi-conductive materials that illuminate when electric current is applied, providing instant illumination with no warm up or cool down time before re-striking. Because there is no warm up period, this light can be cycled on and off with no reduction in lamp life.

LED lights run at significantly cooler temperatures than traditional metal halide and high pressure sodium lights and contain no harmful gases, vapors, or mercury, making them both safer and more energy efficient. No extra energy is wasted in cooling enclosed work areas due to external heat emissions from bulb type lights, and the operator risks associated with traditional lighting methods, such as accidental burns and exposure to hazardous substances contained in the glass bulbs, are eliminated. In addition, LEDs are also safer for the environment as they are 100% recyclable, which eliminates the need for costly special disposal services required with traditional gas burning and arc type lamps.

This explosion proof LED inspection light is IP67 rated, dust-proof, and protected against high pressure jets and temporary submersion. The cast aluminum body and LED lamp give this light excellent durability and resistance to vibration and impacts. The housing is specially designed to dissipate heat which increases the efficiency and lifespan of the LEDs and electronics.

This LED task light produces 10,800 lumens with a color temperature of 5000K and a color rendering index of 85 which produces colors and details much more accurately than high pressure sodium or mercury vapor luminaries. We also offer a 3000K warm white and 4500K natural white color temperature options (longer lead times may apply for non-standard temperatures).

**Voltage:** This explosion proof LED inspection light is universal voltage capable and can be operated with 100-277 V AC, 50/60 Hz without modifications to the fixture.

---

Additional voltage configurations available at additional cost. 18-48V AC/DC voltage models are available for network systems and marine vessels. We also offer an additional 347-480 V high voltage, 125-250 V DC, and 0-10 V dimmable versions of this explosion proof LED light fixture.

---

**Click Photos to Enlarge**

[5-15 Straight Blade Plug](#)

[5-20 Straight Blade Plug](#)

[6-20 Straight Blade Plug](#)

---

**Wiring & Plug:** This explosion proof LED inspection light is equipped with 25 feet of 16/3 chemical and abrasion resistant SOOW cord that is fitted with an explosion proof cord cap for easy connection to explosion proof outlets. Plug options include a 5-15 15 amp straight blade plug for use with 120 V explosion proof outlets, a 5-20 20 amp straight blade plug for use with 120 V explosion proof outlets, or a 6-20 20 amp straight blade plug for use with 220-240 V explosion proof outlets. **\*\*PLEASE NOTE\*\*** *voltage ratings on plugs and outlets are MAXIMUM voltage. For low voltage applications, proper voltage must be applied to the outlet or damage to the light fixture will occur.*

**Suggested Applications:** Paint spray booths, aircraft maintenance, oil drilling rigs, refineries, solvent and cleaning areas, gas processing plants, chemical manufacturing, waste water treatment plants, gas processing plants, offshore applications, oil tankers, mud tanks, sand mines, mining, cold weather applications.

At Larson Electronics, we do more than meet your lighting needs. We also provide replacement, retrofit, and upgrade parts as well as industrial grade power accessories. Our craftsmen can custom build any lighting system and/or accessories to fit the unique demands of your operation. A commitment to honesty, quality, and dependability has made Larson Electronics a leader in the lighting and electronics business since 1973. Contact us today at 800-369-6671 or message [sales@larsonelectronics.com](mailto:sales@larsonelectronics.com) for more information about our custom options tailored to meet your specific industry needs.

---



---

## Frequently Asked Questions (FAQ)

**Options:**

**-Cord Cap-Color Temp**

**Example: -1523-56K**

Cord Cap	
5-15	-1523
5-20	-2023.125V
6-20	-2023.250V

Color Temp	
5600K	-56K
5000K	-50K
4500K	-45K
4000K	-40K
3500K	-35K
3000K	-30K



Links (Click on the below items to view):

- [Video1](#)
- [ISO 9001 Certification](#)
- [Business Certificate](#)