

## 16A Explosion Proof Fused Disconnect- Class I,II,III - Fast Acting Fuse - (3) 16A 600V (4) Cast Hubs

**EPFDS-16A-3P-3X16A.600V-FA**

**Please see last page for supporting documentation for this product(certificates, CAD files & drawings, IES files, wiring diagrams, etc).**



### EPFDS-16A-3P-3X16A.600V-FA Explosion Proof Disconnect Switch / Breaker

**Unit Type:** Explosion Proof Disconnect Switch (Fused)

**Dimensions:** -

**Weight:** 10.5 lbs

**Voltage:** 600V AC or 125V DC (Maximum)

**Configuration:** 3-Pole

**Amps:** 16A

**Fuse Type:** Fast Acting Fuse

**Fuses:** (3) 16A 3P [600V]

**Materials:** Cast Aluminum

**Hardware Materials:** Stainless Steel

**Mounting:** Surface Mount

**Hub Qty:** 4

**Hub Sizes/Location:** (2) 2" NPT (North + South Side), (2) 0.5" NPT (North + South Side)

**Conduit:** Operator Provided

\*All grounding shall comply with state and local codes and meet the minimum requirements of the National Electronic Code section 250\*

### Features/Ratings

Class I, Division 1&2 Groups C,D

Class I, Zones 1&2 Groups IIB,IIA

Class II, Division 1&2 Groups E,F,G

Class III

NEMA 7 (C,D) 9 (E,F,G)

### Special Orders- Requirements

Contact us for special requirements

**Toll Free:** 1-800-369-6671

**Intl:** 1-214-616-6180

**Fax:** 1-903-498-3364

**E-mail:** [sales@larsonelectronics.com](mailto:sales@larsonelectronics.com)

**The Larson Electronics EPFDS-16A-3P-3X16A.600V-FA Explosion Proof Fused Disconnect is designed for use in Class I, II and III environments. Equipped with fast-acting fuses, this 3-pole unit contains three 16-amp 600V fuses and four NPT hubs. The explosion proof disconnect offers instant response to surges and electrical spikes, making it ideal for resistive circuits in flammable work sites.**

**\*PLEASE NOTE: ANY FREE SHIPPING OFFERS DO NOT APPLY TO EXPLOSION PROOF ENCLOSURES\***

The EPFDS-16A-3P-3X16A.600V-FA ensures active protection of electrical systems in combustible facilities. Designed to operate on 600V AC or 125V DC (maximum), this fused unit contains three 16-amp 3-pole 600V fast-acting fuses. These explosion proof disconnects are sensitive to electrical pulses, which provide peace of mind for operators working with sensitive equipment, such as laptops and electronics. Choosing between a time-delay fuse and a fast-acting fuse highly depends on the type of system or device requiring protection, as both protective methods are effective (one is not superior over the other).

The explosion proof disconnect switch/breaker is made of cast aluminum and

features a rectangular bolted cover design for uniform and attractive installations. The cover bolts are made from stainless steel. The external on/off lever can be locked into the "off" position with room for up to three padlocks for superior security. The internal circuit breaker handle mechanism is a sliding plate type mounted to the cover. The circuit breaker is trip free of the external handle mechanism.

**Hubs:** For completing electrical connections, four NPT hubs are provided on the enclosure. Two cast 2" conduit hubs are located at the north side and south side of the unit (one 2" NPT hub per side); and two cast 0.5" NPT hubs can be found at the north side and south side of the disconnect (one 0.5" NPT hub per side).

**Mounting:** Operators can mount the explosion proof disconnect on flat surfaces.

**Applications:** Sensitive equipment, electronics, LED lighting systems, computers, petroleum refineries, chemical and petrochemical plants, storage areas, and other processing facilities where hazardous substances are handled or stored.

At Larson Electronics, we do more than meet your lighting needs. We also provide replacement, retrofit, and upgrade parts as well as industrial grade power accessories. Our craftsmen can custom build any lighting system and/or accessories to fit the unique demands of your operation. A commitment to honesty, quality, and dependability has made Larson Electronics a leader in the lighting and electronics business since 1973. Contact us today at 800-369-6671 or message [sales@larsonelectronics.com](mailto:sales@larsonelectronics.com) for more information about our custom options tailored to meet your specific industry needs.

---



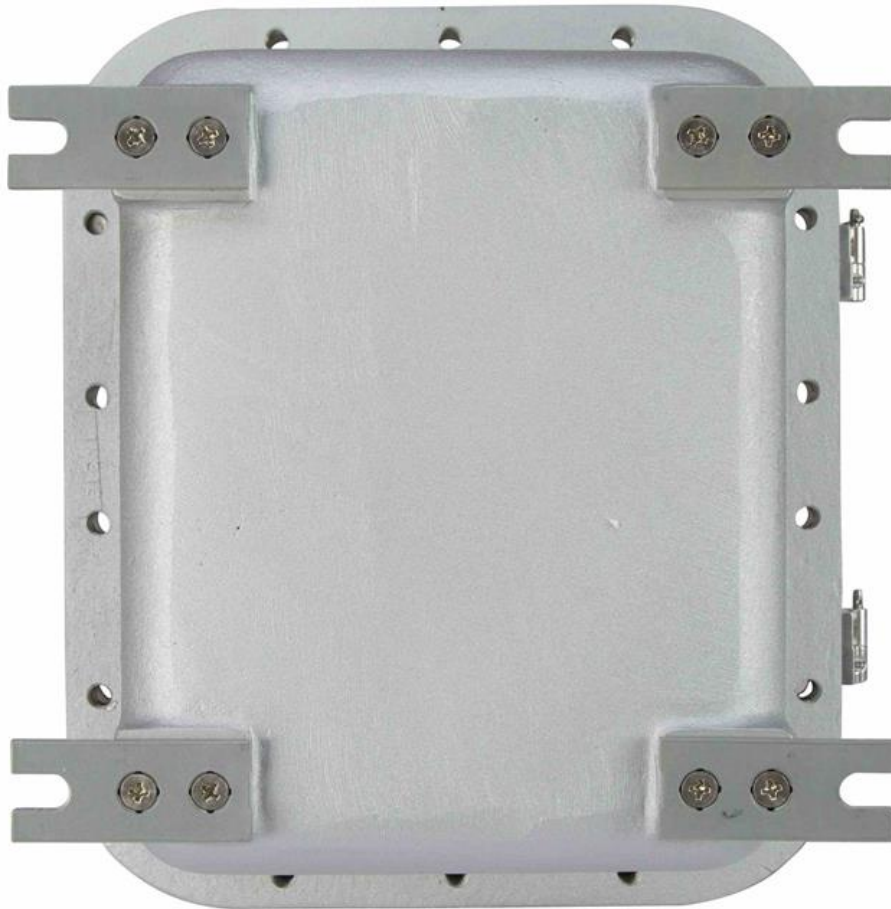
---

## Frequently Asked Questions (FAQ)









Links (Click on the below items to view):

- [HigResPic1](#)
- [HigResPic2](#)
- [HigResPic3](#)
- [HigResPic4](#)
- [HigResPic5](#)
- [HigResPic6](#)
- [HigResPic7](#)
- [ISO 9001 Certification](#)
- [Business Certificate](#)