

2-Port Explosion Proof Conduit Box with Surface Mounting Tabs

EPJ-2-T-SFC

Please see last page for supporting documentation for this product(certificates, CAD files & drawings, IES files, wiring diagrams, etc).



Explosion Proof Conduit Box with Surface Mounting Tabs

Surface mounting tabs for easy installation.

Copper-free aluminum body and cover provides resistance to corrosive atmospheres

External cover thread on body and smooth hub bushing helps to protect conductor insulation when pulling.

Covers and gaskets come furnished with these junction boxes as standard.

Electrostatically applied powder coated finish.

Safety certifications

Class I, Divisions 1 and 2 Groups B, C and D

Class I, Zone I Groups IIC, IIB, and IIA

Class II, Divisions 1 and 2 Groups E, F and G

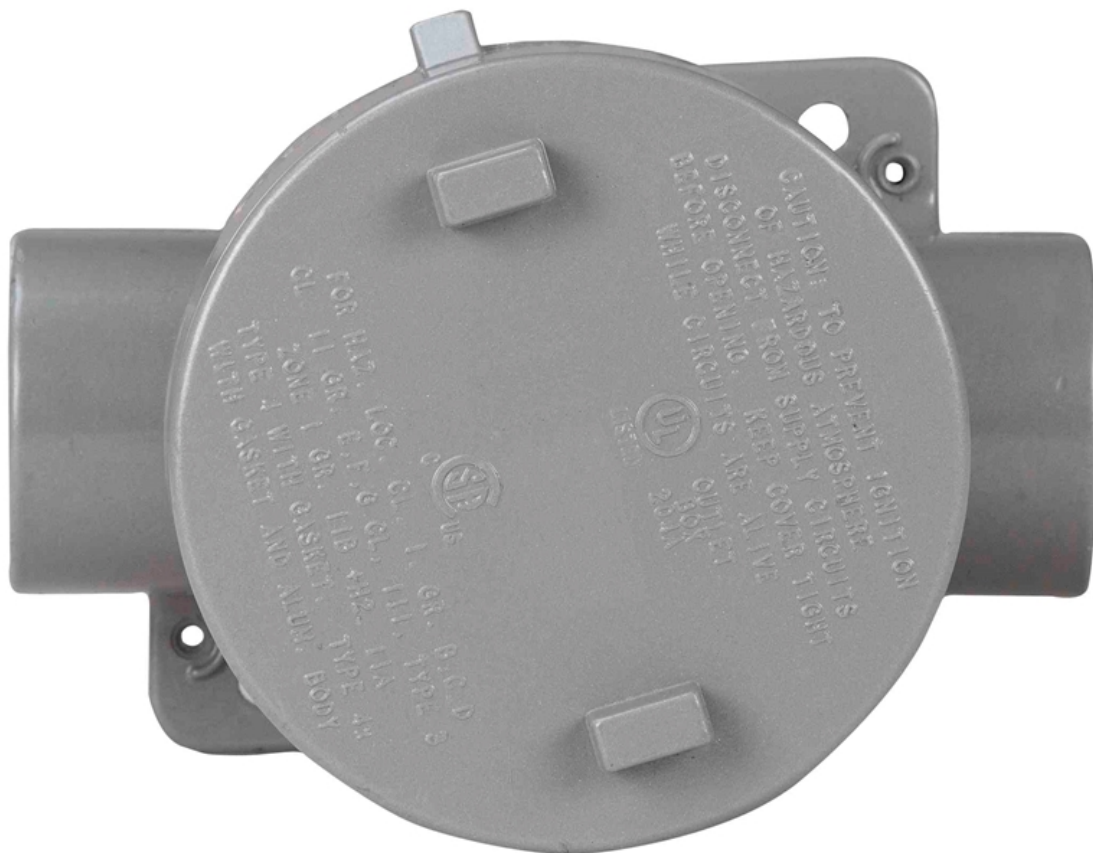
Class III

NEMA 4X

Ambient Temp: -40°C to +163°C

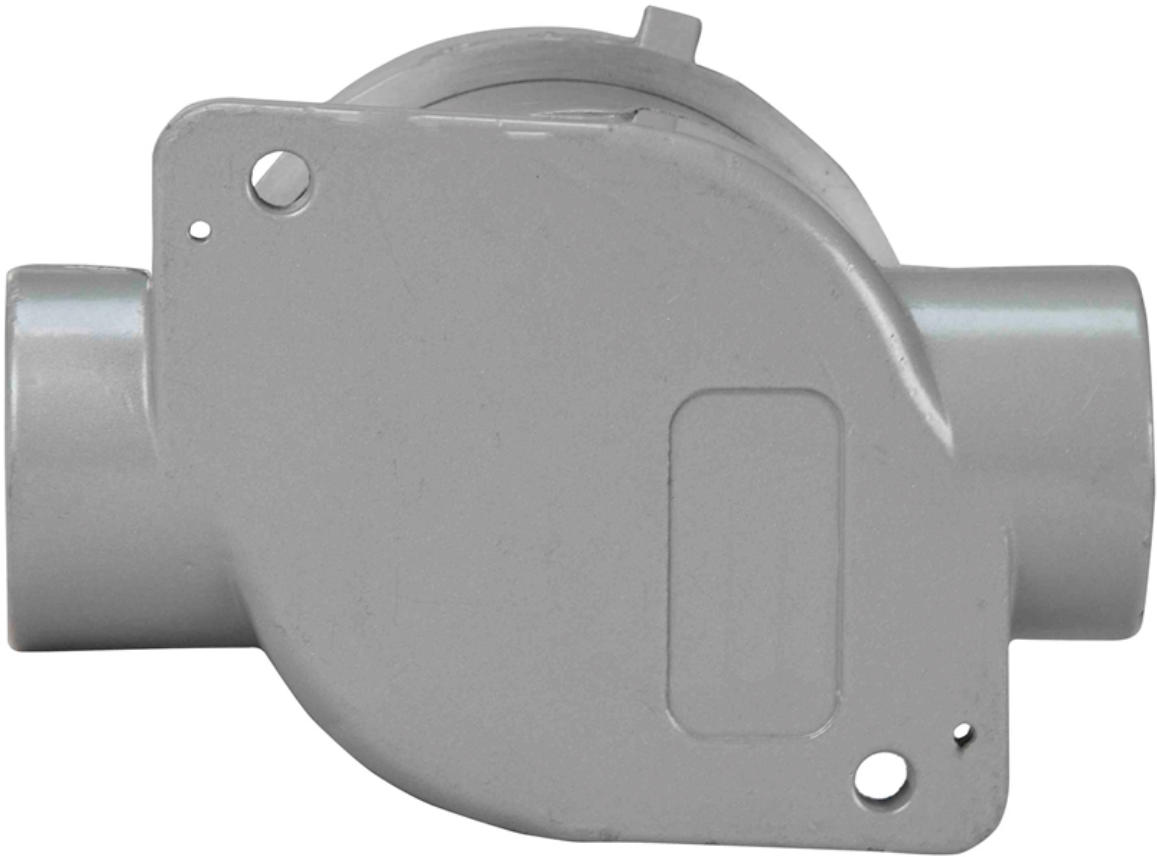


Frequently Asked Questions (FAQ)









Options:

EPJ-2-T-SFC-Hub Config

Example: EPJ-2-T-SFC-0.5

Hub Config	
1/2 INCH	-0.5
3/4 INCH	-0.75

Links (Click on the below items to view):

- [MSDS \(Material Safety Data Sheet\)](#)
- [Operations Manual](#)
- [HigResPic1](#)
- [HigResPic2](#)
- [HigResPic3](#)
- [HigResPic4](#)
- [HigResPic5](#)
- [HigResPic6](#)
- [HigResPic7](#)
- [HigResPic8](#)
- [ISO 9001 Certification](#)
- [Business Certificate](#)