

Explosion Proof Terminal Strip Junction Box - (8) Inputs, (8) Outputs - Type 4X/IP66

EPJ-2-T-SFC-TB-8XTB.12G

Please see last page for supporting documentation for this product(certificates, CAD files & drawings, IES files, wiring diagrams, etc).



EPJ-2-T-SFC-TB-8XTB.12G Explosion Proof Terminal Box

Listing: NRTL Listed for United States and Canada; ATEX/IECEx Rated

Dimensions: 4.31" x 5.5"

Weight: -

Inputs: (8)

Outputs: (8)

Materials: Copper-free Aluminum, Nitrile Compound (O-ring Gasket)

Finish: Electrostatically-applied Powder Coating - Grey

Mount: Surface/Conduit

Grounding (Earthing) Screws: (1) Internal, (2) External

Wiring Accommodation: 22-12 AWG

Configuration: Feed Through

Hub Size Options: (2) 1/2" NPT or 3/4" NPT

Ratings

Class I, Division 1&2, Groups B, C, D

Class I, Zone 1&2, Groups IIC, IIB, IIA

Class II, Division 1&2, Groups E, F, G

Class III

Type 3, 4 & 4X IP66

II 2 G D

Ex d IIC T* Gb

Ex t IIIC T*°C Db

Ta = -40°C to +*°C IP66

Special Orders- Requirements

Contact us for special requirements

Toll Free: 1-800-369-6671

Intl: 1-214-616-6180

Fax: 1-903-498-3364

E-mail: sales@larsonelectronics.com

The Larson Electronics EPJ-2-T-SFC-TB-8XTB.12G Explosion Proof Terminal Strip Junction Box protects electrical components and connections in Class I, II and III rated facilities. This Type 4X device is equipped with eight inputs and eight outputs. The explosion proof terminal box takes on a feed-through configuration and caters to surface or conduit mounting requirements.

The EPJ-2-T-SFC-TB-8XTB.12G facilitates seamless wiring and electrical connections in combustible work sites. This terminal strip junction box contains eight inputs and eight outputs. Operators may access one internal and two external grounding (earthing) screws. The IP66-rated unit is constructed of copper-free aluminum, with an electrostatically-applied powder coating for added durability.

Hubs: The explosion proof device contains two hubs in a feed-through configuration. Hub size options include 1/2" NPT or 3/4" NPT. This unit accommodates 22-12 AWG wiring.

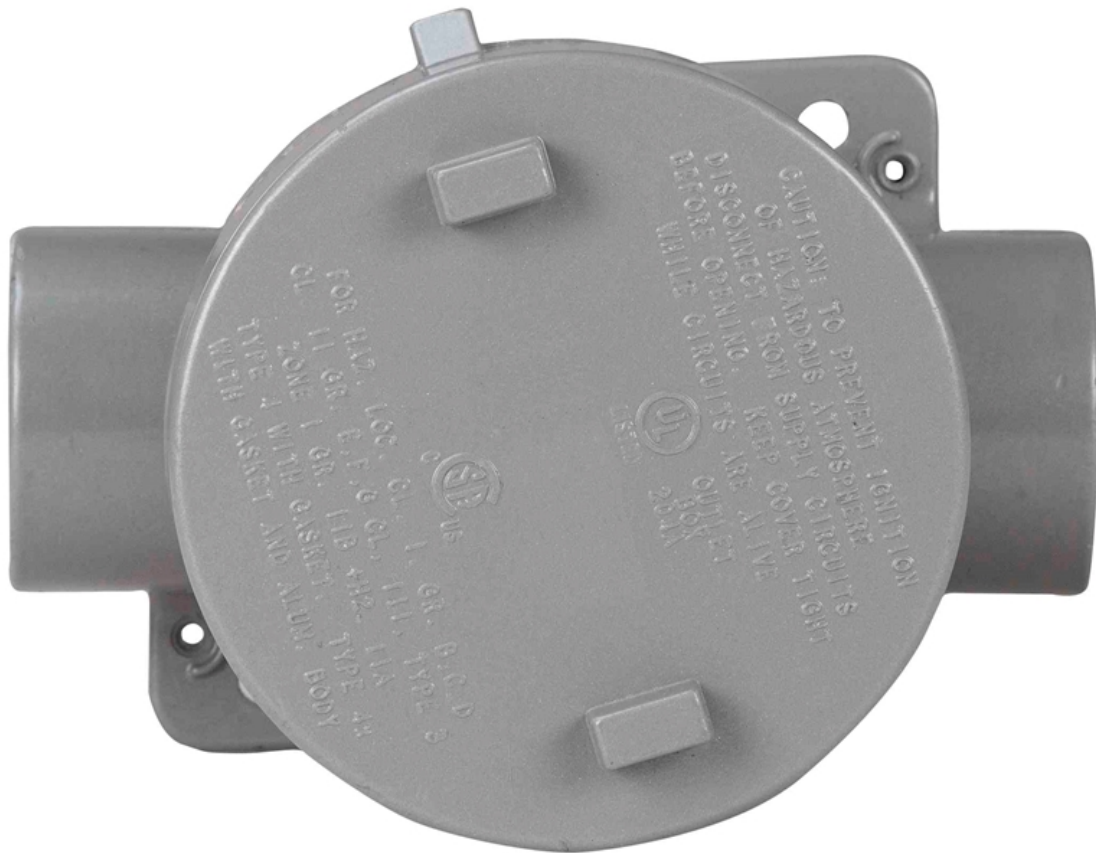
Mount: The EPJ-2-T-SFC-TB-8XTB.12G is compatible with surface (via two external mounting holes) or conduit mounting applications.

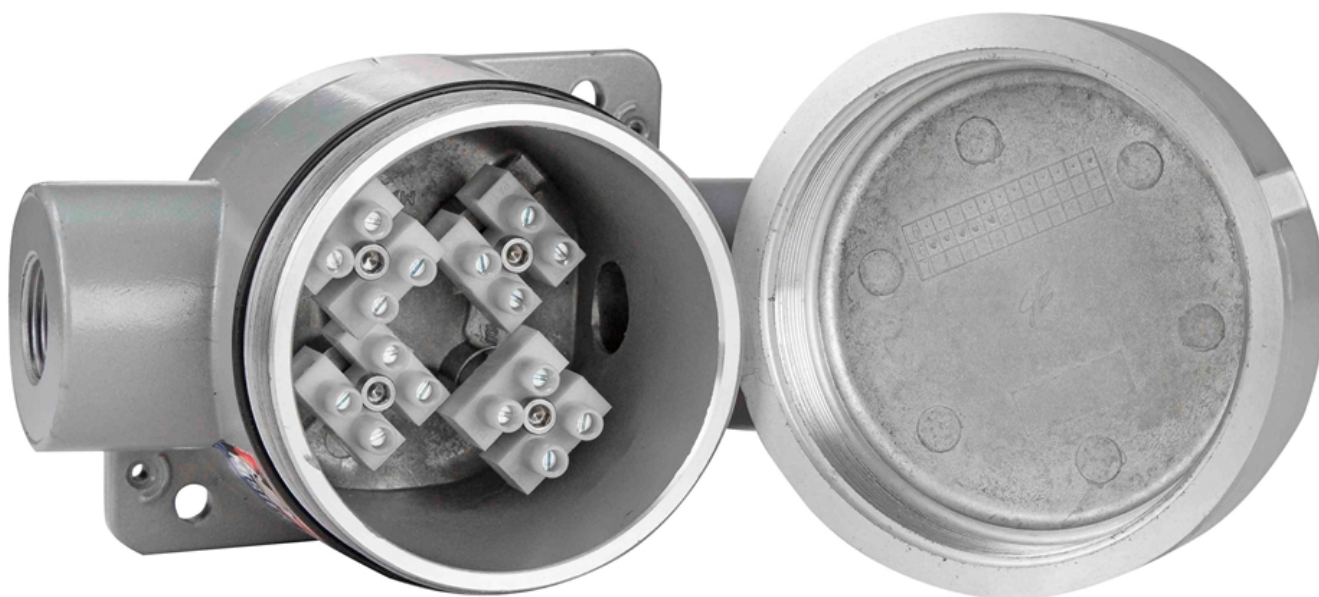
Applications: Hazardous locations, explosive work sites, oil and gas facilities, chemical processing plants, food manufacturing establishments, mining sites and

more.

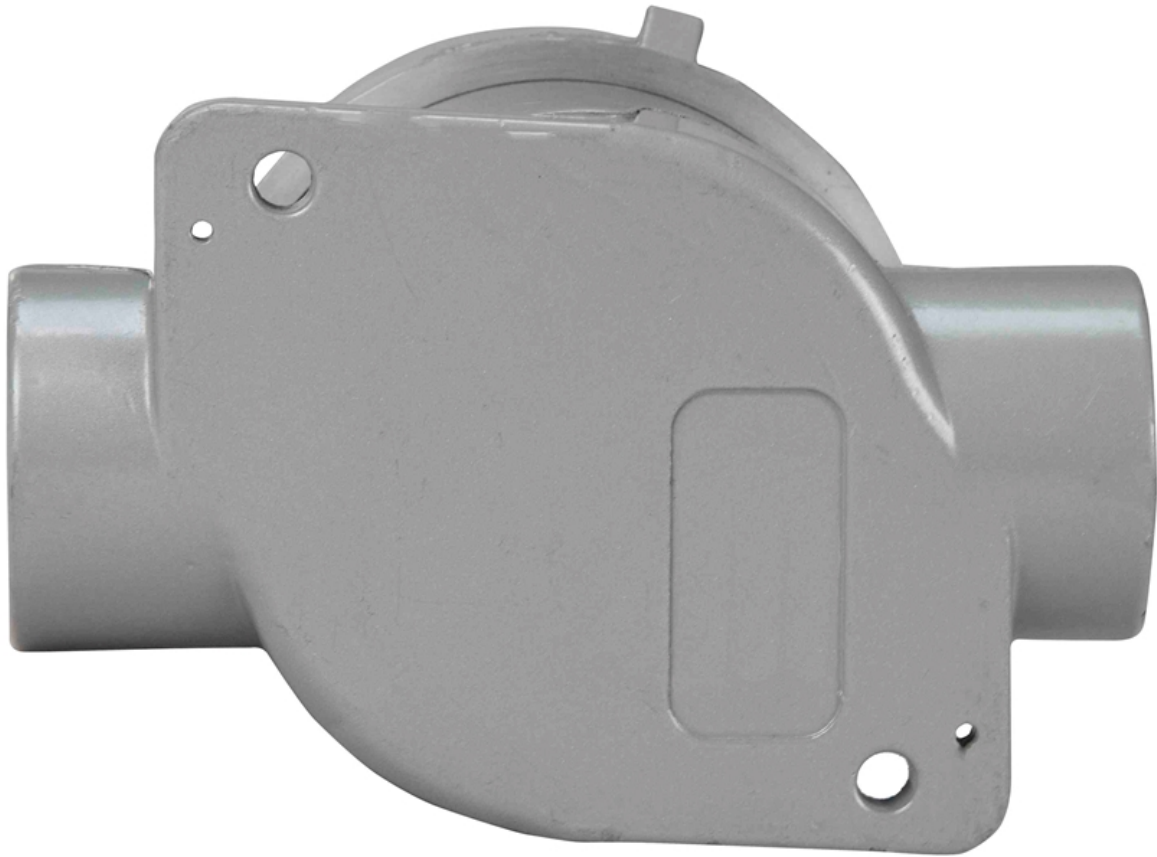
At Larson Electronics, we do more than meet your lighting needs. We also provide replacement, retrofit, and upgrade parts as well as industrial grade power accessories. Our craftsmen can custom build any lighting system and/or accessories to fit the unique demands of your operation. A commitment to honesty, quality, and dependability has made Larson Electronics a leader in the lighting and electronics business since 1973. Contact us today at 800-369-6671 or message sales@larsonelectronics.com for more information about our custom options tailored to meet your specific industry needs.

Frequently Asked Questions (FAQ)









Options:

EPJ-2-T-SFC-TB-8XTB.12G-[Hub Config](#)

Example: EPJ-2-T-SFC-TB-8XTB.12G-0.5

Hub Config	
1/2 INCH	-0.5
3/4 INCH	-0.75

Links (Click on the below items to view):

- [MSDS \(Material Safety Data Sheet\)](#)
- [Operations Manual](#)
- [HigResPic1](#)
- [HigResPic2](#)
- [HigResPic3](#)
- [HigResPic4](#)
- [HigResPic5](#)
- [HigResPic6](#)
- [HigResPic7](#)
- [HigResPic8](#)
- [ISO 9001 Certification](#)
- [Business Certificate](#)