

Explosion Proof Pulling Elbow - 1/2" Hub - 90 Degrees - Aluminum

EPJ-Y-50

Please see last page for supporting documentation for this product(certificates, CAD files & drawings, IES files, wiring diagrams, etc).



EPJ-Y-50 Explosion Proof Pulling Elbow

Hub Size: 1/2"

Angle: 90 Degrees

Materials: Aluminum

Dimensions: 2-3/4" H x 2-7/8" D x 1-7/8" Dia

Features/Ratings

Class I, Div. 1 & 2, Groups C, D

Class I, Div. 1 & 2, Groups C, D

Class III

UL Listed

Special Orders- Requirements

Contact us for special requirements

Toll Free: 1-800-369-6671

Intl: 1-214-616-6180

Fax: 1-903-498-3364

E-mail: sales@larsonelectronics.com

Made in the USA

The EPJ-Y-50 From Larson Electronics is a 90 degree explosion proof pulling elbow with a 1/2" hub, rated for Class I, Class II and Class III hazardous locations.

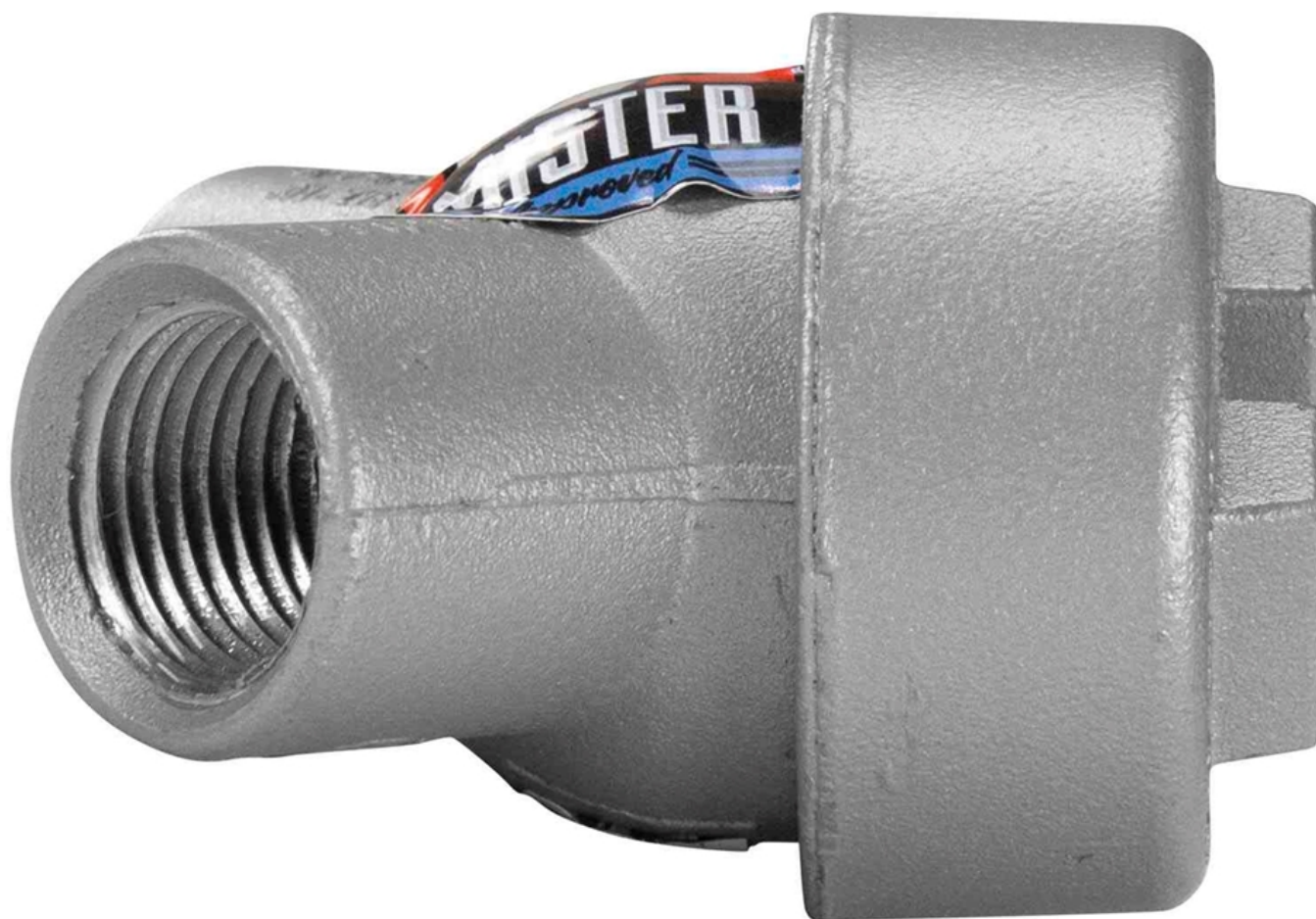
This 90 degree capped pulling elbow is Class I, Div. 1 & 2, Groups C, D Class II, Div. 1 & 2, Groups E, F, G and Class III rated, as well as UL listed. This aluminum pulling elbow features a 1/2" hub and is threaded for use with rigid or IMC conduit systems, to change the direction 90 degrees in systems where operators have limited access to pulling conductors or tight spaces for maintenance. The smooth integral brushing on this pulling elbow helps prevent damage to wires.

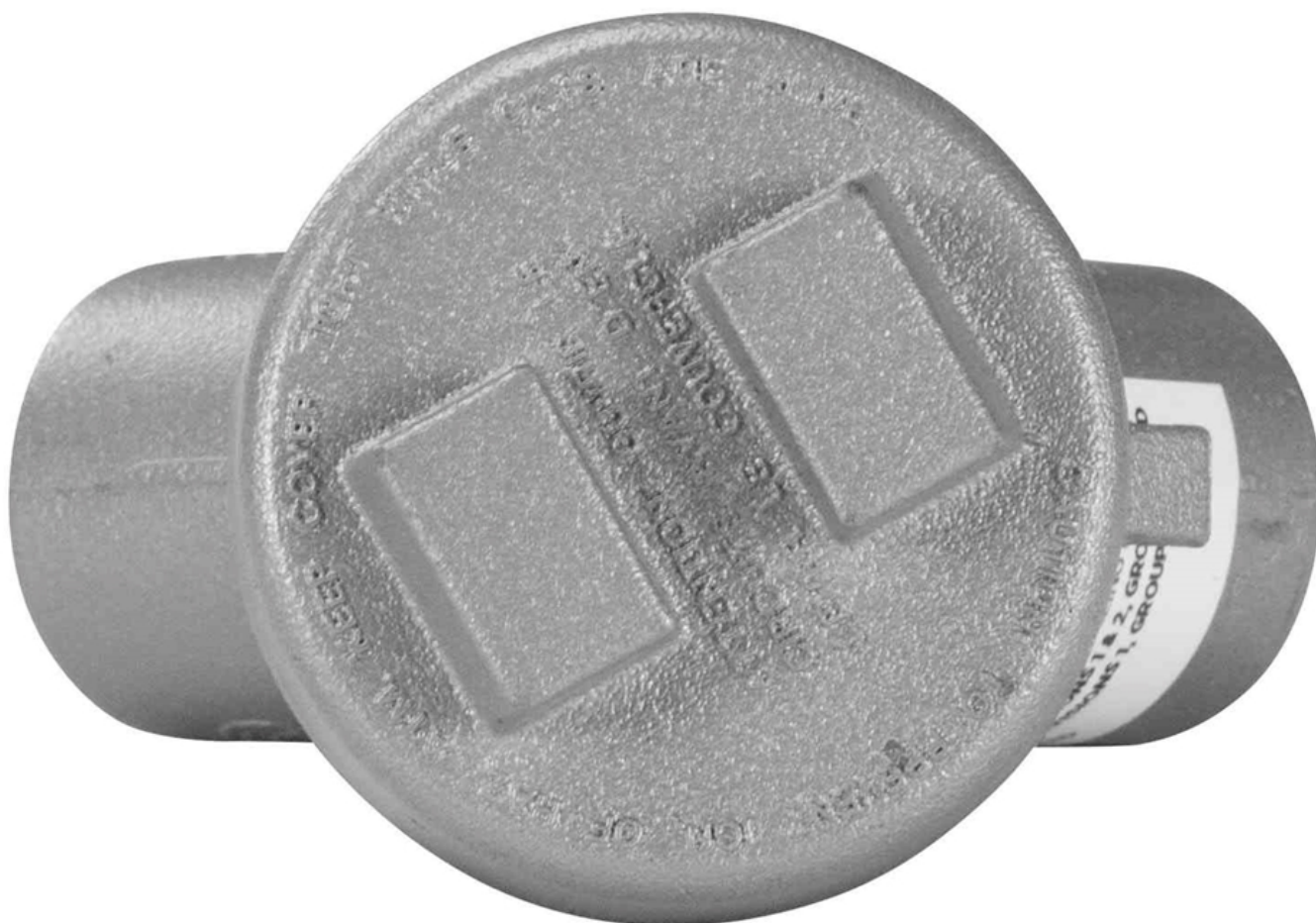
At Larson Electronics, we do more than meet your lighting needs. We also provide replacement, retrofit, and upgrade parts as well as industrial grade power accessories. Our craftsmen can custom build any lighting system and/or accessories to fit the unique demands of your operation. A commitment to honesty, quality, and dependability has made Larson Electronics a leader in the lighting and electronics business since 1973. Contact us today at 800-369-6671 or message sales@larsonelectronics.com for more information about our custom options tailored to meet your specific industry needs.

Frequently Asked Questions (FAQ)









Links (Click on the below items to view):

- [Canadian CEC Certificate \(Commonly referred to as CSA Certificate\)](#)
- [CE Certificate](#)
- [Certificate 1, Misc](#)
- [MSDS \(Material Safety Data Sheet\)](#)
- [Operations Manual](#)
- [USA NEC Certificate \(Commonly referred to as UL Certificate\)](#)
- [HigResPic1](#)
- [HigResPic2](#)
- [HigResPic3](#)
- [HigResPic4](#)
- [HigResPic5](#)
- [HigResPic6](#)
- [HigResPic7](#)
- [HigResPic8](#)
- [ISO 9001 Certification](#)
- [Business Certificate](#)