

60W Explosion Proof Incandescent Jar Fixture - 120V - ATEX/IECEx Rated - Factory Sealed EPL-AE.EX-MJ-60W-120V-R1-PND

Please see last page for supporting documentation for this product(certificates, CAD files & drawings, IES files, wiring diagrams, etc).



EPL-AE.EX-MJ-60W-120V-R1-PND ATEX Rated Incandescent Lamp

Listing: Europe, International

Lamp Technology: Incandescent

Dimensions: -

Weight: -

Voltage: 120V AC

Total Watts: 60W

Lumens: 1,080 lms

Beam Angle: 360°

Lamp Base: E27

Amps: 0.5A @ 120V

Ambient Operating Temp Range: -20°C to +40°C

Housing Material: Die-cast Aluminum Alloy w/ Epoxy Resin Powder Finish

Lens Material: Borosilicate Toughened Glass

Mounting: Pendant

Terminal: L1 ,N, PE

Cable Entry: (2) M25 x 1.5 - Molded Plastic Cable Gland, Stopping Plug

Ratings/Approvals

Approved for Zone 1 and Zone 2

Approved for Zone 21 and Zone 22

ATEX Ex II 2 GD Ex de III C T80°C Db

IEC Ex de II C T6 Gb Ex tb III C T60°C Db

EN60079 Certified

IEC60079 Certified

Factory Sealed

Side-mounted Junction Box

Special Orders- Requirements

Contact us for special requirements

Phone: 1-214-616-6180

Toll Free: 1-800-369-6671

Fax: 1-903-498-3364

E-mail: sales@larsonelectronics.com

The EPL-AE.EX-MJ-60W-120V-R1-PND Explosion Proof Incandescent Jar Fixture from Larson Electronics is a powerful incandescent lamp for ATEX-rated environments. This 60-watt fixture is compatible with 120V AC and offers 360 degrees of illumination. Constructed of die-cast aluminum alloy with an epoxy resin powder finish, the explosion proof light is factory sealed and compatible with pendant mounting applications.

The EPL-AE.EX-MJ-60W-120V-R1-PND is an ATEX-rated incandescent fixture for explosive work sites. Equipped with a corrosion-resistant housing, this unit operates on 120V AC. The 60-watt lamp offers 1,080 lumens of output, with a 360-degree beam angle that is highly visible during use. The explosion proof luminary is constructed of die-cast aluminum alloy with an epoxy resin powder finish. Equipped with a borosilicate toughened glass lens, this factory sealed unit features an E27 lamp holder and is ATEX rated for Zone 1, 2, 21 and 22.

Wiring: Cable entries are facilitated by two, M25 x 1.5 openings (molded plastic cable gland and stopping plug). Terminal connections include: L1, N, PE. A side-mounted junction box is available for seamless field installations.

Mounting: This incandescent fixture is suitable for pendant mount applications. For adjustable mounting configurations, a mounting bracket can be purchased separately

with the incandescent lamp.

Suggested Applications: Hazardous locations, explosive work sites, confined spaces, chemical processing, food manufacturing and more.

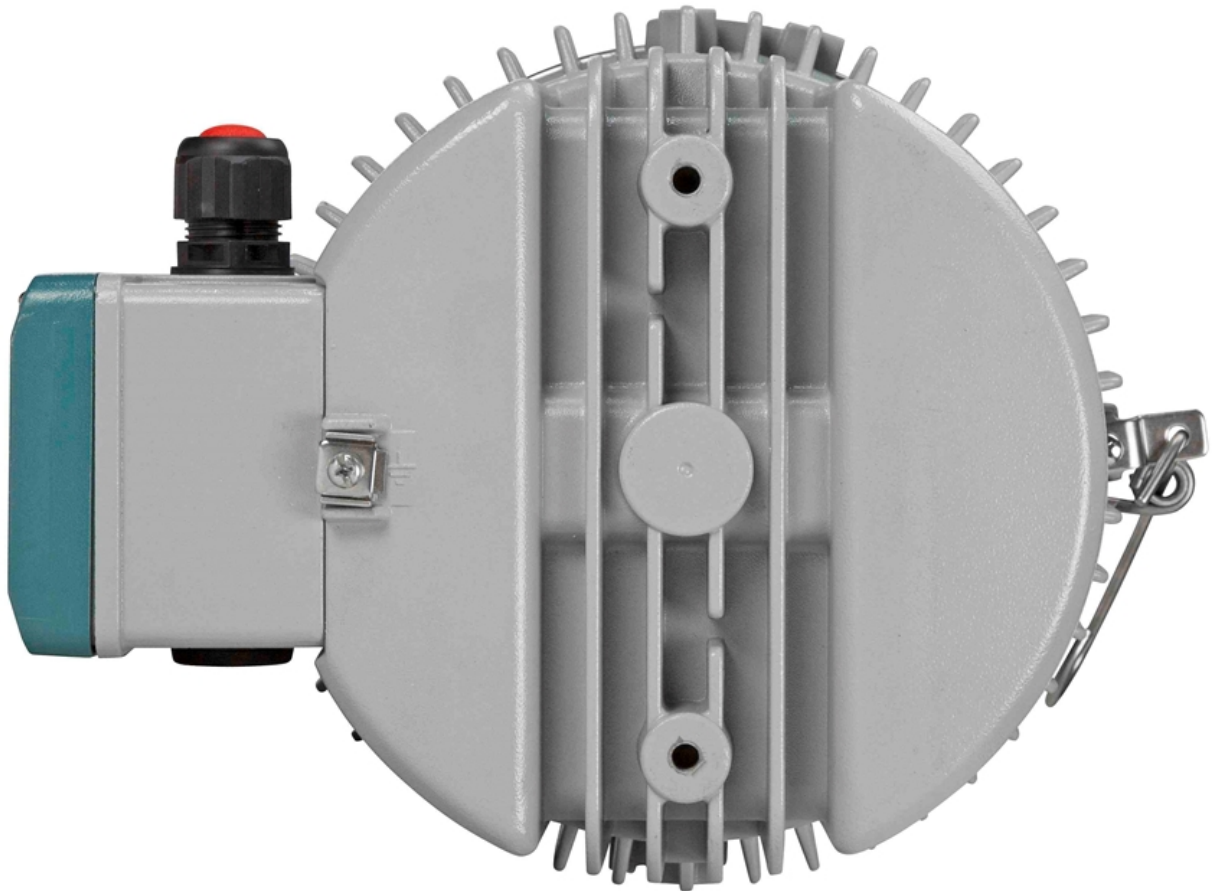
At Larson Electronics, we do more than meet your lighting needs. We also provide replacement, retrofit, and upgrade parts as well as industrial grade power accessories. Our craftsmen can custom build any lighting system and/or accessories to fit the unique demands of your operation. A commitment to honesty, quality, and dependability has made Larson Electronics a leader in the lighting and electronics business since 1973. Contact us today at 800-369-6671 or message sales@larsonelectronics.com for more information about our custom options tailored to meet your specific industry needs.

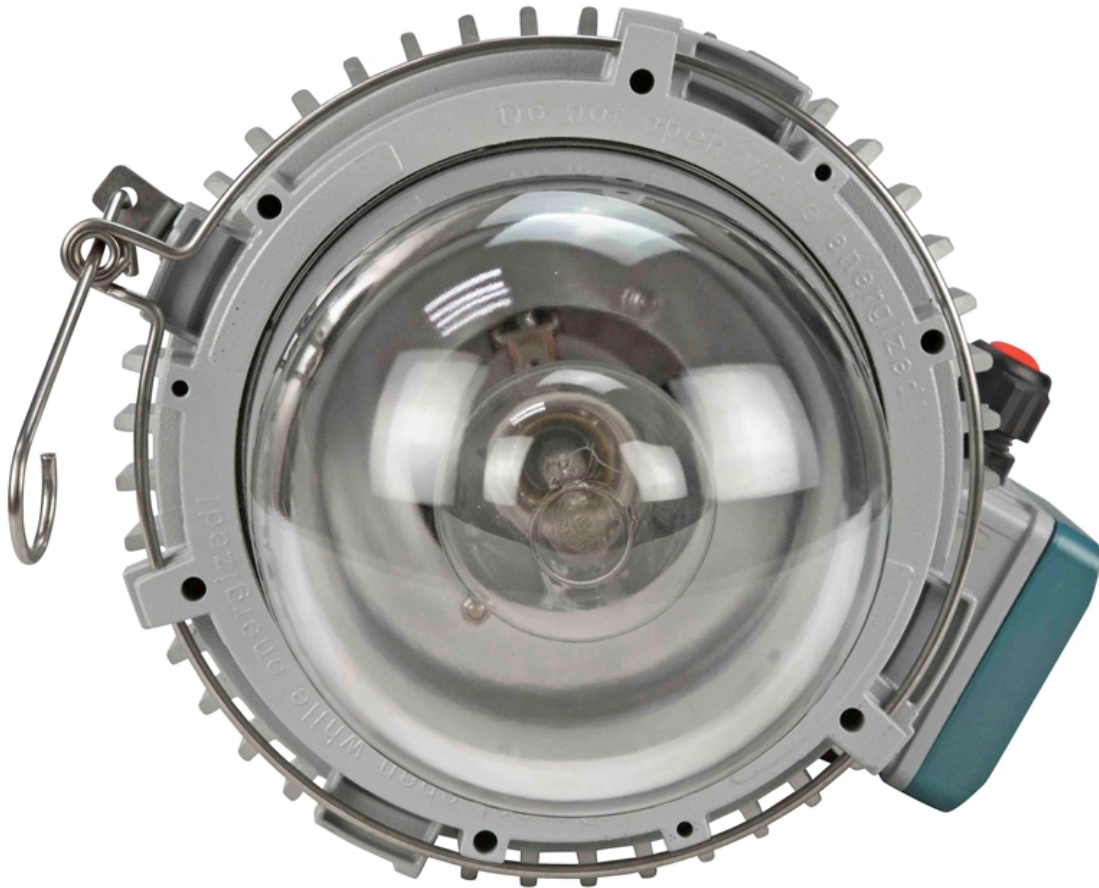


Frequently Asked Questions (FAQ)









Links (Click on the below items to view):

- [CE Certificate](#)
- [Certificate 1, Misc](#)
- [Dimensional Drawing 2D](#)
- [IEC Ex Certificate \(International Explosion Proof\)](#)
- [Operations Manual](#)
- [RoHS Certificate \(Restriction of Hazardous Substances\)](#)
- [HigResPic1](#)
- [HigResPic2](#)
- [HigResPic3](#)
- [HigResPic4](#)
- [HigResPic5](#)
- [HigResPic6](#)
- [HigResPic7](#)
- [HigResPic8](#)
- [Video1](#)
- [ISO 9001 Certification](#)
- [Business Certificate](#)
- [Shipping Time Map](#)