

70W Explosion Proof HPS Lamp - 230V 50/60Hz Ballast - Trunnion Mount - ATEX/IECEx - Lamp Not Included

EPL-AE.EX-MJ-HPS-70W-230V-R1-TRN

Please see last page for supporting documentation for this product(certificates, CAD files & drawings, IES files, wiring diagrams, etc).



EPL-AE.EX-MJ-HPS-70W-230V-R1-TRN ATEX Rated HPS Lamp

Listing: NRTL Certified for Europe and International

Lamp Technology: High Pressure Sodium (Lamp Not Included)

Dimensions: -

Weight: 21.53 lbs

Voltage: 230V AC, 50/60 Hz

Total Watts: 70W

Lumens: 8750

Beam Angle: 360°

Lamp Base: E27

Amps: 0.3A @ 230V

Ambient Operating Temp Range: -40 to+40/+55

Housing Material: Die-cast Aluminum Alloy w/ Epoxy Resin Powder Finish

Lens Material: Borosilicate Toughened Glass

Mounting: Trunnion Mount

Terminal: L1, N

Hubs: (1) M25 x 1.5 w/ Molded Plastic Cable Gland, (1) M25 w/ Stopping Plug

Ratings/Approvals

Approved for Zone 1 and Zone 2

Approved for Zone 21 and Zone 22

Ex tb C T195 Db

Ex 2 GD Ex de C T* Gb

Temp Rating -40Ta40/55

NRTL Certified to IEC 60079

NRTL Certified to EN 60079

CE Certified

IP66 Weatherproof

Special Orders- Requirements

Contact us for special requirements

Phone: 1-214-616-6180

Toll Free: 1-800-369-6671

Fax: 1-903-498-3364

E-mail: sales@larsonelectronics.com

The EPL-AE.EX-MJ-HPS-70W-230V-R1-TRN Explosion Proof High Pressure Sodium Fixture from Larson Electronics is a powerful lamp for ATEX-rated environments. This 70-watt fixture is compatible with 230V AC, 50/60Hz and offers 360 degrees of illumination. Constructed of die-cast aluminum alloy with an epoxy resin powder finish, the explosion proof light is compatible with trunnion mounting applications. The lamp is not included with the fixture.

The EPL-AE.EX-MJ-HPS-70W-230V-R1-TRN is an ATEX-rated high-pressure sodium fixture for explosive work sites. Equipped with a corrosion-resistant housing, this unit operates on 230V AC, 50/60 Hz. The 70-watt light features a 360-degree beam angle that is highly visible during use. This explosion proof luminary is constructed of die-cast aluminum alloy with an epoxy resin powder finish. Equipped with a borosilicate toughened glass lens, the unit features an E27 lamp holder and is ATEX rated for Zones 1, 2, 21 and 22.

Wiring: Cable entries are facilitated by one M25 x 1.5 hub (molded plastic cable gland and stopping plug). Terminal connections include: L1, N. A side-mounted junction box is available for seamless field installations.

Mounting: This HPS fixture is suitable for trunnion mount applications. After

installation, operators can adjust the light head for proper light placement over the target area.

Suggested Applications: Hazardous locations, explosive work sites, confined spaces, chemical processing, food manufacturing and more.

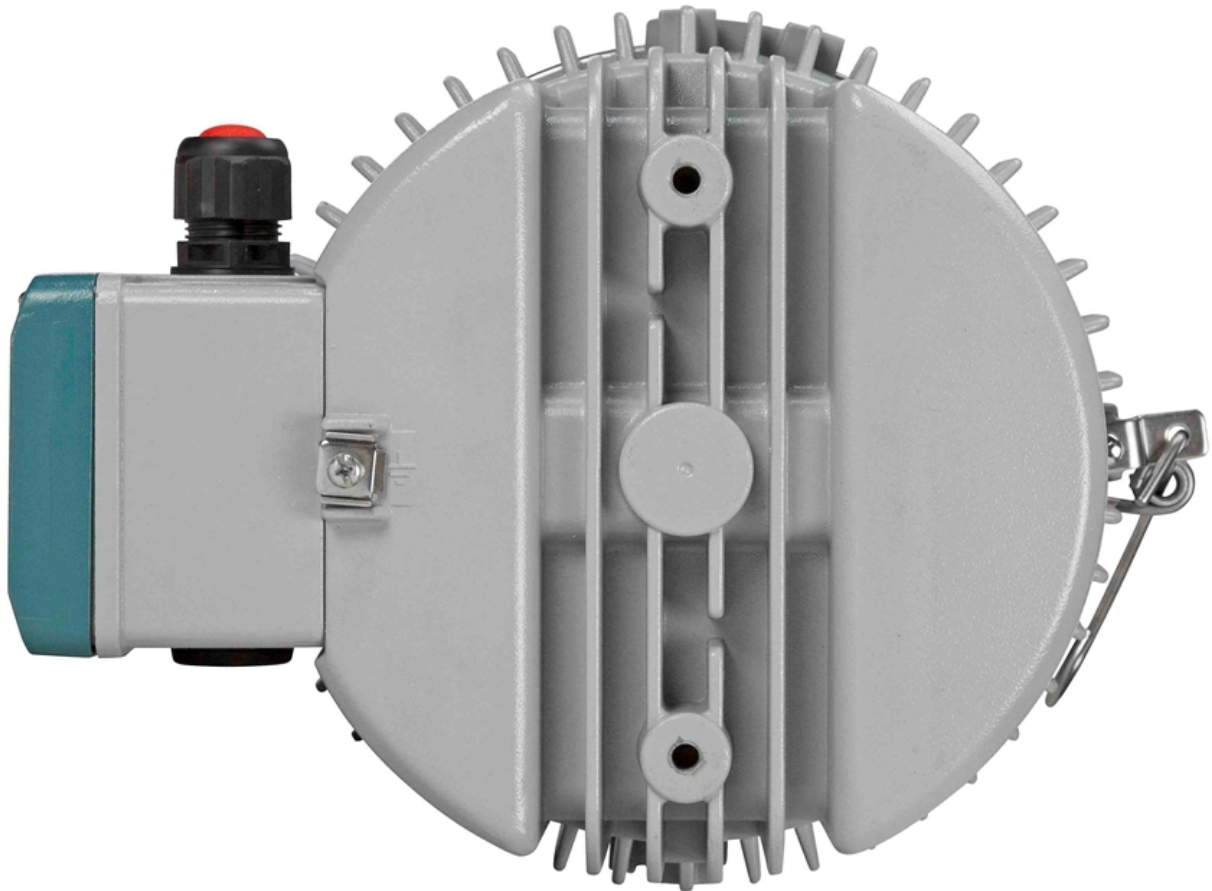
At Larson Electronics, we do more than meet your lighting needs. We also provide replacement, retrofit, and upgrade parts as well as industrial grade power accessories. Our craftsmen can custom build any lighting system and/or accessories to fit the unique demands of your operation. A commitment to honesty, quality, and dependability has made Larson Electronics a leader in the lighting and electronics business since 1973. Contact us today at 800-369-6671 or message sales@larsonelectronics.com for more information about our custom options tailored to meet your specific industry needs.

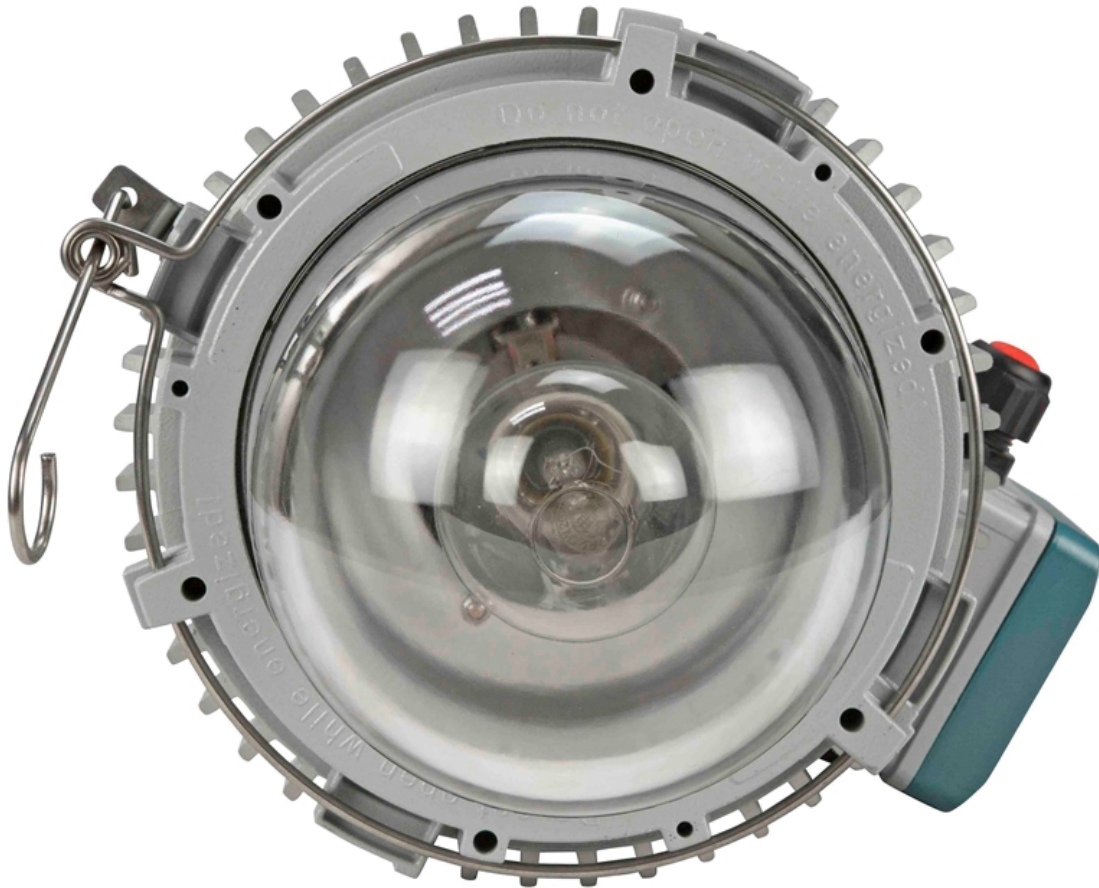


Frequently Asked Questions (FAQ)









Links (Click on the below items to view):

- [CE Certificate](#)
- [Certificate 1, Misc](#)
- [IEC Ex Certificate \(International Explosion Proof\)](#)
- [RoHS Certificate \(Restriction of Hazardous Substances\)](#)
- [HigResPic1](#)
- [HigResPic2](#)
- [HigResPic3](#)
- [HigResPic4](#)
- [HigResPic5](#)
- [HigResPic6](#)
- [HigResPic7](#)
- [HigResPic8](#)
- [Video1](#)
- [ISO 9001 Certification](#)
- [Business Certificate](#)
- [Shipping Time Map](#)