

15W Explosion Proof LED Warning Light - Trunnion Mount - ATEX/IECEX EPL-AE.EX-MJ-LED-15W-TRN-R1

Please see last page for supporting documentation for this product(certificates, CAD files & drawings, IES files, wiring diagrams, etc).



EPL-AE.EX-MJ-LED-15W-TRN-R1 LED Warning Light

Listing: NRTL Listed for European Union and International

Lamp Technology: LED - A21

Dimensions (w/ Mounting Bracket): -

Weight: -

Voltage: 120-277V AC, 50/60Hz or 12-24V AC/DC

Total Watts: 15W

Lumens: 2,400 lms

Luminous Efficacy: 160 Lm/W

Lamp Life: 25,000+ Hours

LED Color: White

Color Rendering Index: -

Lamp Type: -

Lamp Base: E26

Replacement Lamp: LED-A19-10-E26-V3

Beam Angle: 300°

Lighting Configuration: -

Power Efficiency: -

Power Factor: -

Ambient Operating Temp Range: -20° C to +55°C

Operating Temp Rating: T6

Housing Material: Die-cast Aluminum Alloy

Housing Finish: Epoxy Resin Powder

Lens Material: Borosilicate Glass

Hardware Material: Stainless Steel

Mounting: Trunnion Mount

Terminals: L1, N, PE

Cable Entry: (1) M25 x 1.5 - Molded Plastic w/ Stopping Plug

Cable Entry OD: 8-17mm

Ratings/Approvals

ATEX/IECEX Rated

Zones 1/2 and 21/22

Ex tb C T80 Db

Ex 2 GD Ex de C T6 Gb

IP66 Waterproof

T6 Temperature Rating

Special Orders- Requirements

Contact us for special requirements

Phone: 1-214-616-6180

Toll Free: 1-800-369-6671

Fax: 1-903-498-3364

E-mail: sales@larsonelectronics.com

The EPL-AE.EX-MJ-LED-15W-TRN-R1 Explosion Proof LED Warning Light from Larson Electronics is a powerful lamp for ATEX/IECEX rated environments. This 15-watt white fixture offers 2,400 lumens of light output. Constructed of die-cast aluminum alloy with an epoxy resin powder finish, the IP66 rated light is compatible with trunnion mounting applications.

The EPL-AE.EX-MJ-LED-15W-TRN-R1 is a durable white warning light for hazardous locations and combustible sites. Utilizing only 15 watts and designed to operate with 120-277V AC or 12-24V AC/DC, this lamp provides higher efficiency than traditional incandescent A21 bulbs and is a direct fit replacement. The A21 is the same base and dimensions as a standard A19 incandescent and compact fluorescent light bulbs. This LED bulb produces nearly 3 times the foot candles at 5', compared to a standard 100-watt rough service bulb.

The white LED luminary is constructed of die-cast aluminum alloy with an epoxy resin powder finish. Protected by a borosilicate toughened glass lens, the unit carries T6 and IP66 waterproof ratings. This LED aviation light is ATEX/IECEX rated for Zones 1, 2, 21 and 22.

LED Benefits: Unlike gas burning and arc type lamps that have glass bulbs, LEDs have no filaments or fragile housings to break during operation. Instead of heating a small filament or using a combination of gases to produce light, light emitting diodes (LEDs) use semi-conductive materials that illuminate when electric current applied and emitting light. With LED lights, there is no warm up time or cool down time before re-striking and provide instant illumination when powered on, adding to the reliability of LED technology. By nature, LED light sources run significantly cooler than traditional lamps, reducing the chance of accidental burns and increased temperatures due to heat emissions. This solid state design of light emitting diodes provides a more reliable, stable, durable, and energy efficient light source over traditional lighting.

This lamp has an operational life of 25,000 hours. The solid state design of this lamp means it is resistant to the effects of impacts and vibrations, providing adding durability to withstand conditions that would cause a normal incandescent bulb to fail. The overall dimensions of this LED light are the same as a standard A19 incandescent lamp, making this a direct replacement for currently installed bulbs. The base of this LED lamp is constructed of aluminum and is fitted with a shatter resistant polycarbonate dome, adding for durability and resistance to rust and corrosion.

Wiring: Cable entries are facilitated by one M25 x 1.5 hub (molded plastic cable gland and stopping plug). Terminal connections include: L1, N and PE.

Mounting: The EPL-AE.EX-MJ-LED-15W-TRN-R1 is compatible with trunnion mounting installations.

Suggested Applications: Hazardous locations, warnings, outdoor sites, obstruction lighting, aviation, marking, military lighting systems and more.

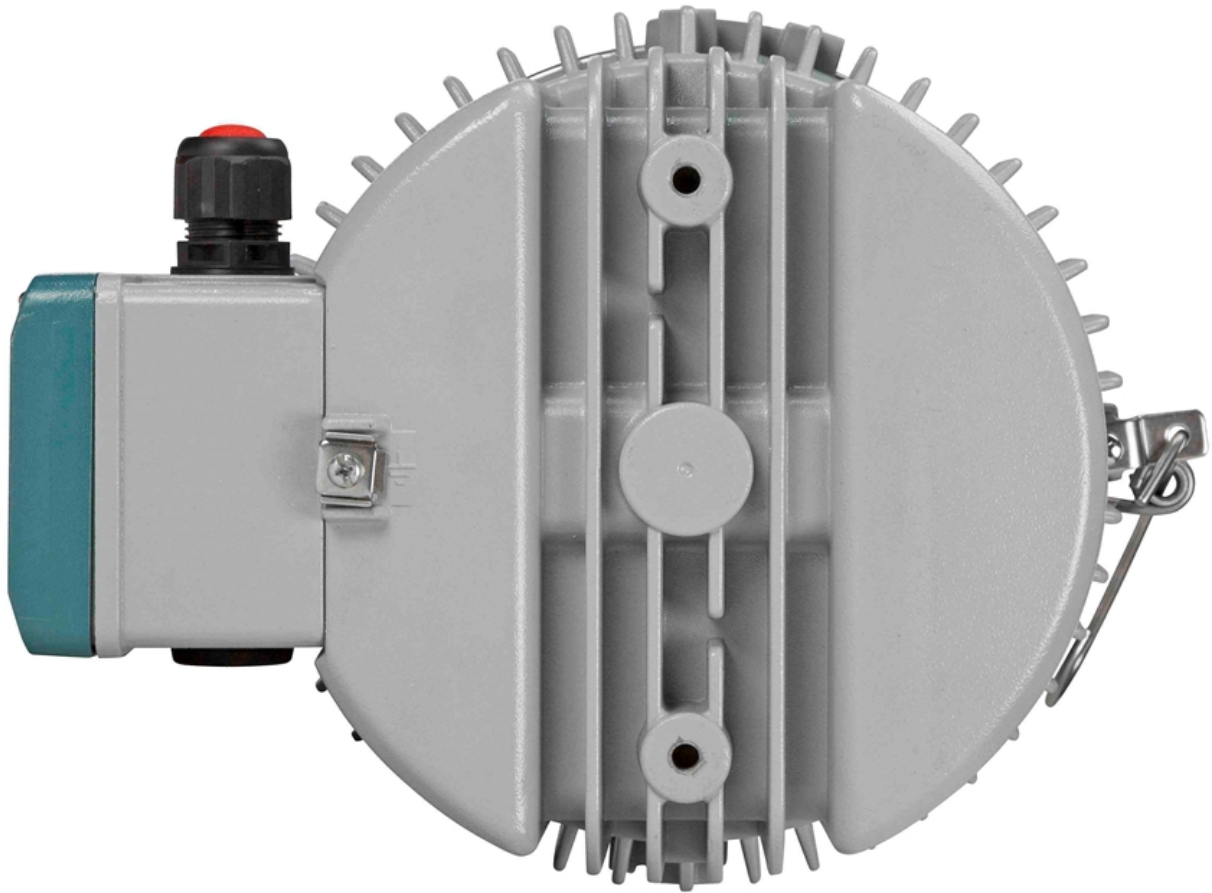
At Larson Electronics, we do more than meet your lighting needs. We also provide replacement, retrofit, and upgrade parts as well as industrial grade power accessories. Our craftsmen can custom build any lighting system and/or accessories to fit the unique demands of your operation. A commitment to honesty, quality, and dependability has made Larson Electronics a leader in the lighting and electronics business since 1973. Contact us today at 800-369-6671 or message sales@larsonelectronics.com for more information about our custom options tailored to meet your specific industry needs.



Frequently Asked Questions (FAQ)









Options:

EPL-AE.EX-MJ-LED-15W-TRN-R1-Voltage

Example: EPL-AE.EX-MJ-LED-15W-TRN-R1-1227

Voltage	
120-277V AC 50/60 HZ	-1227
12-24V AC/DC	-1224

Links (Click on the below items to view):

- [HigResPic1](#)
- [HigResPic2](#)
- [HigResPic3](#)
- [HigResPic4](#)
- [HigResPic5](#)
- [HigResPic6](#)
- [HigResPic7](#)
- [HigResPic8](#)
- [ISO 9001 Certification](#)
- [Business Certificate](#)
- [Shipping Time Map](#)