

**10W Explosion Proof LED Strobe Indicator Warning Light - 120V, 50/60 Hz - Red - Surface Mount
- ATEX/IECEX**

EPL-AE.EX-STRB-LED-10W-R-120V-R1

Please see last page for supporting documentation for this product(certificates, CAD files & drawings, IES files, wiring diagrams, etc).



EPL-AE.EX-STRB-LED-10W-R-120V-R1 LED Strobe Light

Listing: NRTL Listed for European Union and International

Lamp Technology: LED

Dimensions (w/ Mounting Bracket): 13.62" x 9.84" (346mm x 250mm)

Weight: -

Voltage: 120V AC, 50/60Hz

Total Watts: 10W

Luminous Intensity: -

Luminous Efficacy: -

Lamp Life: 50,000+ Hours

LED Color: Red

Color Rendering Index: -

Lamp Type: -

Lamp Base: -

Replacement Lamp: -

Beam Angle: 360°

Lighting Configuration: Strobe Flashing or Rotating Flash Pattern

Power Efficiency: -

Power Factor: -

Ambient Operating Temp Range: -20° C to +55°C

Operating Temp Rating: T6

Housing Material: Die-cast Aluminum Alloy

Housing Finish: Epoxy Resin Powder

Lens Material: Borosilicate Glass

Hardware Material: Stainless Steel

Mounting: Surface

Terminals: L1, N, PE

Cable Entry: (1) M25 x 1.5 - Molded Plastic w/ Stopping Plug

Cable Entry OD: 8-17mm

Ratings/Approvals

ATEX/IECEX Rated

Zones 1/2 and 21/22

Ex tb C T80 Db

Ex 2 GD Ex de C T6 Gb

IP66 Waterproof

T6 Temperature Rating

Special Orders- Requirements

Contact us for special requirements

Phone: 1-214-616-6180

Toll Free: 1-800-369-6671

Fax: 1-903-498-3364

E-mail: sales@larsonelectronics.com

The EPL-AE.EX-STRB-LED-10W-R-120V-R1 Explosion Proof LED Strobe Indicator Warning Light from Larson Electronics is a powerful lamp for

ATEX/IECEX rated environments. This 10-watt red fixture is compatible with 120V AC, 50/60Hz and offers 360 degrees of illumination. Constructed of die-cast aluminum alloy with an epoxy resin powder finish, the IP66 rated light is compatible with surface mounting applications.

The EPL-AE.EX-STRB-LED-10W-R-120V-R1 is a durable red warning light for hazardous locations and combustible sites. Equipped with a corrosion-resistant housing, this unit operates on 120V AC, 50/60 Hz. The 10-watt light fixture has an expected lifespan of 50,000+ hours and offers powerful light output. A 360-degree beam angle ensures high visibility during use. Options for strobing patterns include: standard strobe flash or rotating flash. This red LED luminaire is constructed of die-cast aluminum alloy with an epoxy resin powder finish. Protected by a borosilicate toughened glass lens, the unit carries T6 and IP66 waterproof ratings. This LED aviation light is ATEX/IECEX rated for Zones 1, 2, 21 and 22.

LED Benefits: Unlike gas burning and arc type lamps that have glass bulbs, LEDs have no filaments or fragile housings to break during operation. Instead of heating a small filament or using a combination of gases to produce light, light emitting diodes (LEDs) use semi-conductive materials that illuminate when electric current is applied and emitting light. With LED lights, there is no warm up time or cool down time before re-striking and provide instant illumination when powered on, adding to the reliability of LED technology. By nature, LED light sources run significantly cooler than traditional lamps, reducing the chance of accidental burns and increased temperatures due to heat emissions. This solid state design of light emitting diodes provides a more reliable, stable, durable, and energy efficient light source over traditional lighting.

Wiring: Cable entries are facilitated by one M25 x 1.5 hub (molded plastic cable gland and stopping plug). Terminal connections include: L1, N and PE.

Mounting: The EPL-AE.EX-STRB-LED-10W-R-120V-R1 is compatible with surface mounting installations.

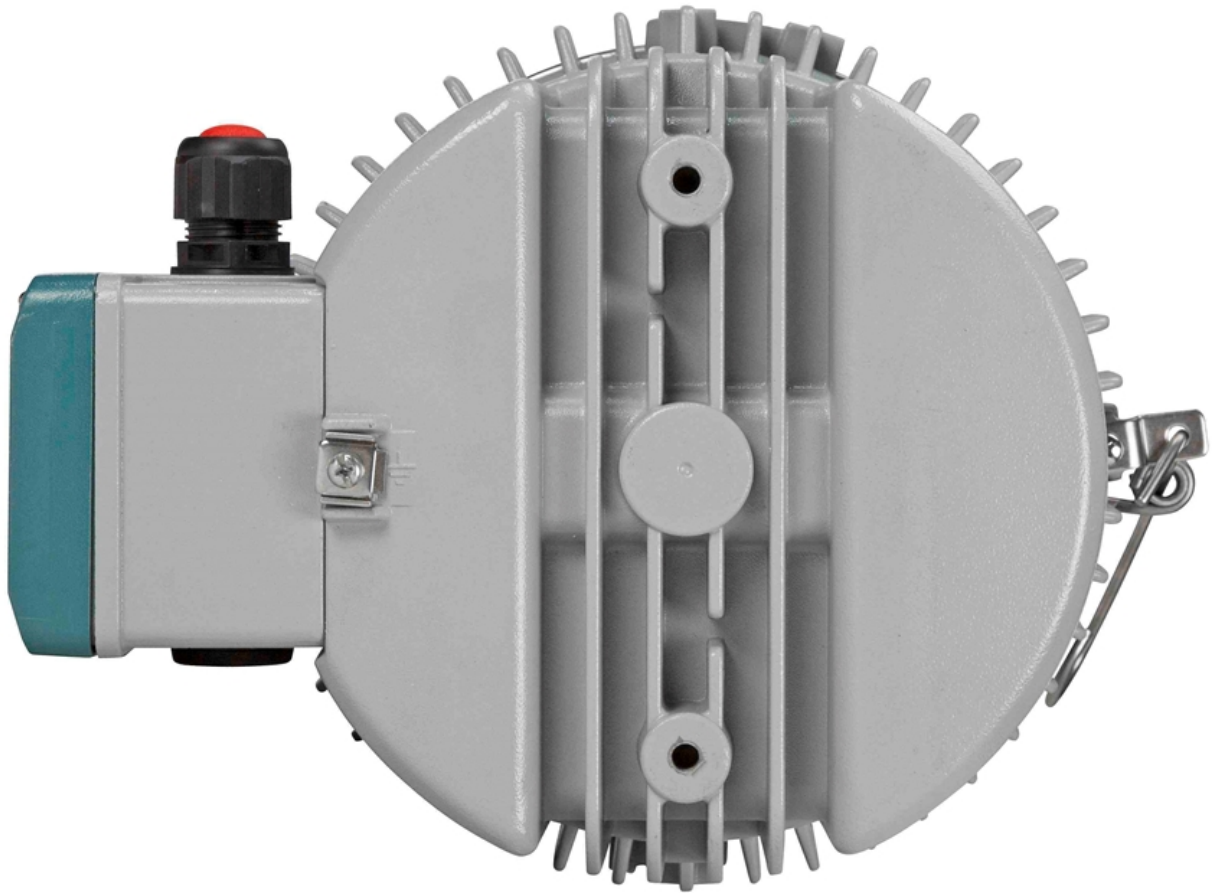
Suggested Applications: Hazardous locations, warnings, outdoor sites, indicator lighting, obstruction lighting, aviation, marking, military lighting systems and more. At Larson Electronics, we do more than meet your lighting needs. We also provide replacement, retrofit, and upgrade parts as well as industrial grade power accessories. Our craftsmen can custom build any lighting system and/or accessories to fit the unique demands of your operation. A commitment to honesty, quality, and dependability has made Larson Electronics a leader in the lighting and electronics business since 1973. Contact us today at 800-369-6671 or message sales@larsonelectronics.com for more information about our custom options tailored to meet your specific industry needs.



Frequently Asked Questions (FAQ)









Options:

EPL-AE.EX-STRB-LED-10W-R-120V-R1-[Pattern](#)

Example: EPL-AE.EX-STRB-LED-10W-R-120V-R1-**FS**

Pattern	
FLASH	-FS
ROTATING	-RT

Links (Click on the below items to view):

- [HigResPic1](#)
- [HigResPic2](#)
- [HigResPic3](#)
- [HigResPic4](#)
- [HigResPic5](#)
- [HigResPic6](#)
- [HigResPic7](#)
- [HigResPic8](#)
- [Video1](#)
- [ISO 9001 Certification](#)
- [Business Certificate](#)
- [Shipping Time Map](#)