



EPL-AEB

ENCLOSURES

CATALOG 2020



Larson Electronics Explosion Proof Enclosures protect equipment and system components in Class I, II and III, Divisions 1 and 2 rated combustible sites and hazardous locations. The explosion proof enclosures in this series are recommended for the following: manufacturing, industrial, oil and gas, refineries, chemical processing, wastewater treatment, confined spaces, battery storage sites, grain silos, agriculture, textile, woodshops, labs, petrol stations, automotive shops and more. Class I rated sites refer to hazardous locations that host flammable gases or vapors at quantities that may cause an ignition, while Class II rated sites are hazardous locations that contain combustible dust (420 microns, or smaller, in diameter). Class III rated sites are hazardous locations that have ignitable fibers or flyings.

Designed for rugged environments, these explosion proof devices are capable of containing flammable interactions inside the enclosure, where it cannot escape, generate fires in the surrounding location or compromise the safety of nearby operators. Intricate flame paths cool down excess flammable energy, which is dissipated via (extended) flanges and threads. When utilized to separate various system components, such as wires and cables, the NEMA-rated enclosures provide protection from electrical surges. The units in this series are suitable for use in hazardous locations that

experience above average to high operating temperatures, as the enclosures also offer protective mechanisms against heat, pressure and abnormal electrical fluctuations.

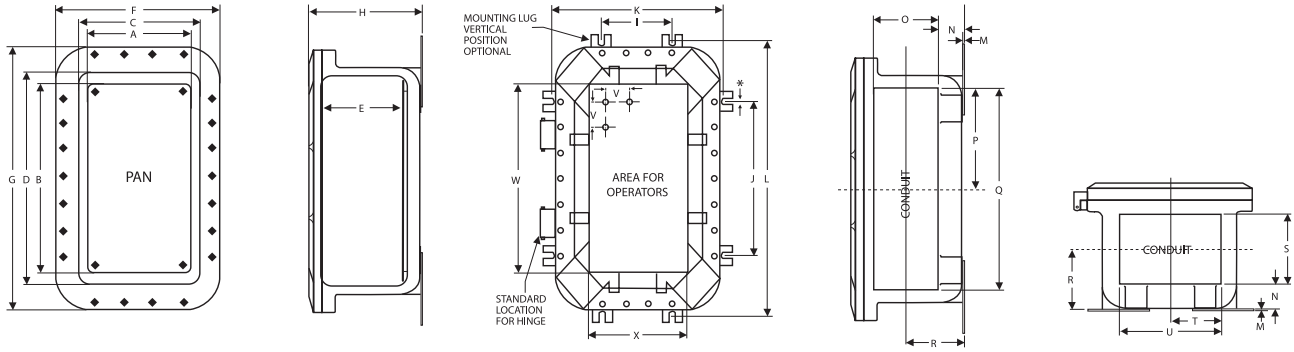
These explosion proof units are made out of non-sparking materials, such as corrosion resistant copper-free aluminum, which reduces the risk of generating unwanted sparks with volatile substances in the area. A standard aluminum lacquer paint finish preserves the external surfaces of the units and promotes long-term use. Equipped with aluminum and stainless steel hardware with steel cover bolts, the explosion proof enclosures feature a weatherproof gasket. Larson Electronics Class I, II and III rated explosion proof enclosures are offered in many different sizes and configurations. Standard mounting methods include surface or wall mounting. Units with internal pans allow customers to secure their own equipment or device inside the enclosure.

To suit specific operating, work flow or system requirements, the explosion proof enclosures in this series are available for customization (at additional costs). Customers may request for custom factory tapped hubs on all sides for seamless installation and compatibility with existing systems. Tapping of conduit hubs is facilitated at Larson Electronics using a CNC machine for precise cutting. Taps include female NPT (National Pipe Thread), female

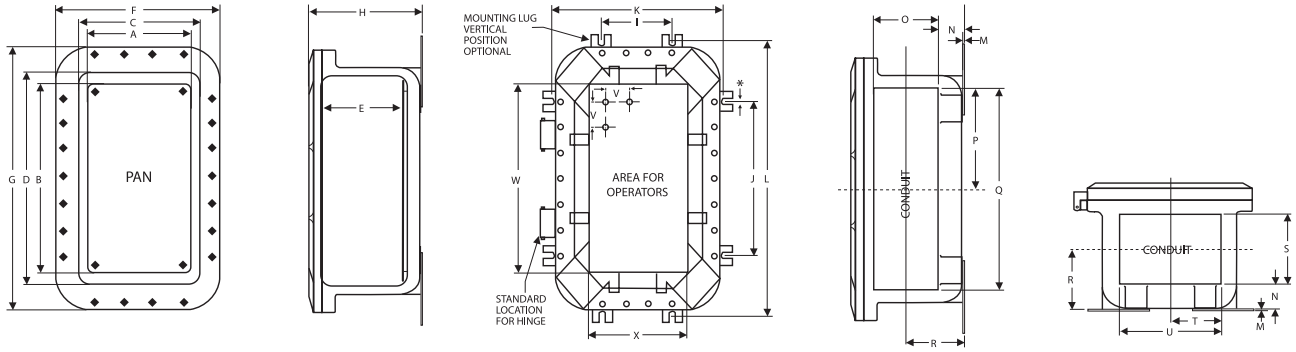
BSPT (British Standard Pipe Thread) and Metric ISO thread.

For control station solutions, we can add windows, hinges, handles, push button switches and labels. Customization also extends to adding devices that require explosion proof protection inside the enclosure, such as sensors, meters, circuit breakers, terminal blocks and wiring. Contact us today at 1-800-369-6671 for more information about customization services for Larson Electronics explosion proof enclosures.

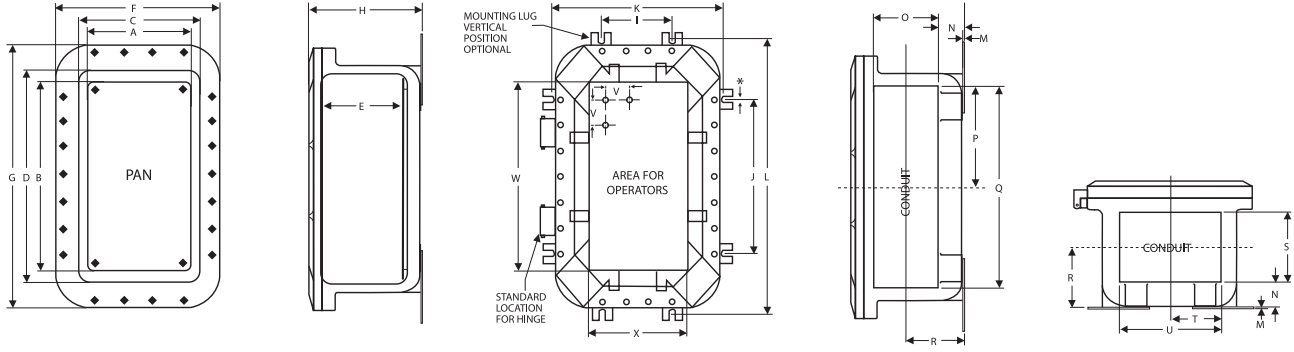




SKU	NOMINAL ENCLOSURE INSIDE DIMENSIONS W" L" D" (MM)	MAX CONDUIT SIZE	MAXIMUM NUMBER OF OPERATORS	WEIGHT LBS (KGS)
EPL-AEB-6.6.4-N3R	6x6x4 (152x152x102)	2"	2 rows of 2 = 4	18 (8.17)
EPL-AEB-6.8.4-N3R	6x8x4 (152x203x102)	2"	2 rows of 3 = 6	26.6 (12.08)
EPL-AEB-6.12.4-N3R	6x12x4 (152x305x102)	2"	4 rows of 2 = 8	70 (31.78)
EPL-AEB-8.8.6-N3R	8x8x6 (203x203x152)	2"	3 rows of 3 = 9	30 (13.62)
EPL-AEB-8.10.4-N3R	8x10x4 (203x254x102)	2"	4 rows of 3 = 12	35 (15.89)
EPL-AEB-8.10.6-N3R	8x10x6 (203x254x152)	2"	4 rows of 3 = 12	38 (17.25)
EPL-AEB-8.12.6-N3R	8x12x6 (203x305x152)	3"	4 rows of 3 = 12	47 (21.34)
EPL-AEB-8.12.8-N3R	8x12x8 (203x305x203)	4"	4 rows of 3 = 12	67 (30.42)
EPL-AEB-10.10.6-N3R	10x10x6 (254x254x152)	3"	3 rows of 3 = 9	92 (41.77)
EPL-AEB-10.10.8-N3R	10x10x8 (254x254x203)	5"	3 rows of 3 = 9	72 (32.69)
EPL-AEB-10.14.6-N3R	10x14x6 (254x356x152)	3"	5 rows of 3 = 15	82 (37.23)
EPL-AEB-10.14.8-N3R	10x14x8 (254x356x203)	5"	5 rows of 3 = 15	89 (40.41)
EPL-AEB-12.12.6-N3R	12x12x6 (305x305x152)	3"	4 rows of 4 = 16	75 (34.05)
EPL-AEB-12.12.8-N3R	12x12x8 (305x305x203)	5"	4 rows of 4 = 16	83 (37.68)
EPL-AEB-12.18.6-N3R	12x18x6 (305x457x152)	3"	7 rows of 4 = 28	110 (49.94)
EPL-AEB-12.18.8-N3R	12x18x8 (305x457x203)	5"	7 rows of 4 = 28	120 (54.48)
EPL-AEB-12.24.6-N3R	12x24x6 (305x610x152)	3"	9 rows of 4 = 36	145 (65.83)
EPL-AEB-12.24.8-N3R	12x24x8 (305x610x203)	5"	9 rows of 4 = 36	160 (72.64)
EPL-AEB-12.24.12-N3R	12x24x12 (305x610x305)	5"	9 rows of 4 = 36	190 (86.26)
EPL-AEB-12.36.8-N3R	12x36x8 (305x914x203)	5"	14 rows of 4 = 56	231 (104.87)
EPL-AEB-12.36.10-N3R	12x36x10 (305x914x254)	6"	14 rows of 4 = 56	245 (111.23)
EPL-AEB-14.14.6-N3R	14x14x6 (356x356x152)	3"	5 rows of 5 = 25	121 (54.93)
EPL-AEB-14.14.8-N3R	14x14x8 (356x356x203)	5"	5 rows of 5 = 25	136 (61.74)
EPL-AEB-16.16.6-N3R	16x16x6 (406x406x152)	3"	6 rows of 6 = 36	127 (57.66)
EPL-AEB-16.16.8-N3R	16x16x8 (406x406x203)	5"	6 rows of 6 = 36	138 (62.65)
EPL-AEB-16.24.8-N3R	16x24x8 (406x610x203)	5"	8 rows of 5 = 40	251 (113.95)
EPL-AEB-16.24.10-N3R	16x24x10 (406x610x254)	6"	8 rows of 5 = 40	266 (120.76)
EPL-AEB-18.18.6-N3R	18x18x6 (457x457x152)	3"	6 rows of 6 = 36	206 (93.52)
EPL-AEB-18.18.8-N3R	18x18x8 (457x457x203)	5"	6 rows of 6 = 36	220 (99.88)
EPL-AEB-18.24.8-N3R	18x24x8 (457x610x203)	5"	9 rows of 7 = 63	240 (108.96)
EPL-AEB-18.24.10-N3R	18x24x10 (457x610x254)	6"	9 rows of 7 = 63	260 (118.04)
EPL-AEB-18.30.8-N3R	18x30x8 (457x762x203)	5"	11 rows of 7 = 77	320 (145.28)
EPL-AEB-18.36.8-N3R	18x36x8 (457x914x203)	5"	13 rows of 7 = 91	380 (172.52)
EPL-AEB-18.36.10-N3R	18x36x10 (457x914x254)	6"	13 rows of 7 = 91	405 (183.87)
EPL-AEB-20.36.11-N3R	20x36x11 (508x914x279)	6"	13 rows of 7 = 91	540 (245.16)
EPL-AEB-24.24.8-N3R	24x24x8 (610x610x203)	5"	9 rows of 9 = 81	330 (149.82)
EPL-AEB-24.24.10-N3R	24x24x10 (610x610x254)	6"	9 rows of 9 = 81	350 (158.90)
EPL-AEB-24.30.8-N3R	24x30x8 (610x762x203)	5"	9 rows of 7 = 63	430 (195.22)
EPL-AEB-24.36.8-N3R	24x36x8 (610x914x203)	5"	11 rows of 7 = 77	531 (241.07)
EPL-AEB-24.36.10-N3R	24x36x10 (610x914x254)	6"	11 rows of 7 = 77	506 (229.72)



SKU	INTERNAL DIMENSIONS (INCHES)					EXTERNAL DIMENSIONS (INCHES)			MOUNTING DIMENSIONS (INCHES)				
	PAN		AVAILABLE FOR DEVICES			F	G	H	I	J	K	L	M
	A	B	C	D	E								
EPL-AEB-6.6.4-N3R	5 (127.0)	5 (127.0)	5.73 (145.5)	5.73 (145.5)	4.31 (109.47)	10.32 (262.13)	10.32 (262.13)	6.09 (154.69)	N/A	4.00 (101.60)	7.88 (200.15)	N/A	0.19 (4.83)
EPL-AEB-6.8.4-N3R	5 (127.0)	7 (177.8)	5.75 (146.1)	7.75 (196.9)	4.18 (106.17)	10.25 (260.35)	12.25 (311.15)	6.12 (155.45)	N/A	4.00 (101.60)	7.88 (200.15)	N/A	0.19 (4.83)
EPL-AEB-6.12.4-N3R	5 (127.0)	11 (279.4)	5.75 (146.1)	11.75 (298.5)	4.25 (107.95)	10.69 (271.53)	16.69 (423.93)	7.00 (177.80)	N/A	7.82 (198.63)	7.88 (200.15)	N/A	0.19 (4.83)
EPL-AEB-8.8.6-N3R	7 (177.8)	7 (177.8)	7.59 (192.8)	7.59 (192.8)	6.06 (153.92)	12.32 (312.93)	12.32 (312.93)	8.09 (205.49)	N/A	6.00 (152.40)	9.88 (250.95)	N/A	0.19 (4.83)
EPL-AEB-8.10.4-N3R	7 (177.8)	9 (228.6)	7.73 (196.3)	9.73 (247.1)	4.06 (103.12)	12.32 (312.93)	14.32 (363.73)	6.32 (160.53)	N/A	8.00 (203.20)	9.88 (250.95)	N/A	0.19 (4.83)
EPL-AEB-8.10.6-N3R	7 (177.8)	9 (228.6)	7.59 (192.8)	9.59 (243.6)	6.06 (153.92)	12.32 (312.93)	14.32 (363.73)	8.32 (211.33)	N/A	8.00 (203.20)	9.88 (250.95)	N/A	0.19 (4.83)
EPL-AEB-8.12.6-N3R	7 (177.8)	11 (279.4)	8 (203.2)	12 (304.8)	6.38 (161.54)	13.25 (336.55)	17.25 (438.15)	8.70 (220.98)	3.82 (97.03)	7.82 (198.63)	10.38 (263.65)	14.38 (365.25)	0.19 (4.83)
EPL-AEB-8.12.8-N3R	7 (177.8)	11 (279.4)	8 (203.2)	12 (304.8)	8.38 (212.34)	13.25 (336.55)	17.25 (438.15)	10.70 (271.78)	3.82 (97.03)	7.82 (198.63)	10.38 (263.65)	14.38 (365.25)	0.19 (4.83)
EPL-AEB-10.10.6-N3R	9 (228.6)	9 (228.6)	10 (254.0)	10 (254.0)	6.20 (157.48)	15.25 (387.35)	15.25 (387.35)	8.90 (226.06)	4.94 (125.48)	4.94 (125.48)	12.94 (328.68)	12.94 (328.68)	0.25 (6.35)
EPL-AEB-10.10.8-N3R	9 (228.6)	9 (228.6)	10 (254.0)	10 (254.0)	8.20 (208.28)	15.25 (387.35)	15.25 (387.35)	10.90 (276.86)	4.94 (125.48)	4.94 (125.48)	12.94 (328.68)	12.94 (328.68)	0.25 (6.35)
EPL-AEB-10.14.6-N3R	9 (228.6)	13 (330.2)	10 (254.0)	14 (355.6)	6.20 (157.48)	15.25 (387.35)	19.25 (488.95)	8.90 (226.06)	4.94 (125.48)	8.94 (227.08)	12.94 (328.68)	16.94 (430.28)	0.25 (6.35)
EPL-AEB-10.14.8-N3R	9 (228.6)	13 (330.2)	10 (254.0)	14 (355.6)	8.20 (208.28)	15.25 (387.35)	19.25 (488.95)	10.90 (276.86)	4.94 (125.48)	8.94 (227.08)	12.94 (328.68)	16.94 (430.28)	0.25 (6.35)
EPL-AEB-12.12.6-N3R	10.5 (266.7)	10.5 (266.7)	11.5 (292.1)	11.5 (292.1)	6.00 (152.40)	16.38 (416.05)	16.38 (416.05)	8.69 (220.73)	6.94 (176.28)	6.94 (176.28)	14.94 (379.48)	14.94 (379.48)	0.25 (6.35)
EPL-AEB-12.12.8-N3R	10.5 (266.7)	10.5 (266.7)	11.37 (288.8)	11.37 (288.8)	8.00 (203.20)	16.38 (416.05)	16.38 (416.05)	10.69 (271.53)	6.94 (176.28)	6.94 (176.28)	14.94 (379.48)	14.94 (379.48)	0.25 (6.35)
EPL-AEB-12.18.6-N3R	10 (254.0)	16 (406.4)	11.5 (292.1)	17.5 (444.5)	6.00 (152.40)	16.38 (416.05)	22.38 (568.45)	9.06 (230.12)	6.94 (176.28)	12.88 (327.15)	14.94 (379.48)	20.88 (530.35)	0.25 (6.35)
EPL-AEB-12.18.8-N3R	10 (254.0)	16(406.4)	11.37 (288.8)	17.37 (441.2)	8.00 (203.20)	16.38 (416.05)	22.38 (568.45)	11.06 (280.92)	6.94 (176.28)	12.88 (327.15)	14.94 (379.48)	20.88 (530.35)	0.25 (6.35)
EPL-AEB-12.24.6-N3R	10.25 (260.4)	22.25 (565.2)	11.5 (292.1)	23.5 (596.9)	6.00 (152.40)	16.38 (416.05)	28.38 (720.85)	9.32 (236.73)	6.94 (176.28)	18.88 (479.55)	14.94 (379.48)	26.88 (682.75)	0.25 (6.35)
EPL-AEB-12.24.8-N3R	10.25 (260.4)	22.25 (565.2)	11.37 (288.8)	23.37 (593.6)	8.00 (203.20)	16.38 (416.05)	28.38 (720.85)	11.32 (287.53)	6.94 (176.28)	18.88 (479.55)	14.94 (379.48)	26.88 (682.75)	0.25 (6.35)
EPL-AEB-12.24.12-N3R	10.25 (260.4)	22.25 (565.2)	11.37 (288.8)	23.37 (593.6)	12.00 (304.80)	16.38 (416.05)	28.38 (720.85)	15.32 (389.13)	6.94 (176.28)	18.88 (479.55)	14.94 (379.48)	26.88 (682.75)	0.25 (6.35)
EPL-AEB-12.36.8-N3R	11 (279.4)	35 (889.0)	12 (304.8)	36 (914.4)	8.12 (206.25)	17.25 (438.15)	41.25 (1047.75)	11.40 (289.56)	7.00 (177.80)	31.00 (787.40)	15.00 (381.00)	39.00 (990.60)	0.25 (6.35)
EPL-AEB-12.36.10-N3R	11 (279.4)	35 (889.0)	12 (304.8)	36 (914.4)	10.12 (257.05)	17.25 (438.15)	41.25 (1047.75)	13.40 (340.36)	7.00 (177.80)	31.00 (787.40)	15.00 (381.00)	39.00 (990.60)	0.25 (6.35)
EPL-AEB-14.14.6-N3R	13 (330.2)	13 (330.2)	14 (355.6)	14 (355.6)	6.20 (157.48)	19.25 (488.95)	19.25 (488.95)	9.40 (238.76)	9.00 (228.60)	9.00 (228.60)	17.00 (431.80)	17.00 (431.80)	0.25 (6.35)
EPL-AEB-14.14.8-N3R	13 (330.2)	13 (330.2)	14 (355.6)	14 (355.6)	8.20 (208.28)	19.25 (488.95)	19.25 (488.95)	11.40 (289.56)	9.00 (228.60)	9.00 (228.60)	17.00 (431.80)	17.00 (431.80)	0.25 (6.35)
EPL-AEB-16.16.6-N3R	14 (355.6)	14 (355.6)	15.5 (393.7)	15.5 (393.7)	6.00 (152.40)	20.38 (517.65)	20.38 (517.65)	9.19 (233.43)	10.94 (277.88)	10.94 (277.88)	18.94 (481.08)	18.94 (481.08)	0.25 (6.35)
EPL-AEB-16.16.8-N3R	14 (355.6)	14 (355.6)	15.37 (390.4)	15.37 (390.4)	8.00 (203.20)	20.38 (517.65)	20.38 (517.65)	11.19 (284.23)	10.94 (277.88)	10.94 (277.88)	18.94 (481.08)	18.94 (481.08)	0.25 (6.35)
EPL-AEB-16.24.8-N3R	15 (381.0)	23 (584.2)	16 (406.4)	24 (609.6)	8.12 (206.25)	21.25 (539.75)	29.25 (742.95)	12.00 (304.80)	11.38 (289.05)	19.38 (492.25)	19.38 (492.25)	27.38 (695.45)	0.25 (6.35)
EPL-AEB-16.24.10-N3R	15 (381.0)	23 (584.2)	16 (406.4)	24 (609.6)	10.12 (257.05)	21.25 (539.75)	29.25 (742.95)	14.00 (355.60)	11.38 (289.05)	19.38 (492.25)	19.38 (492.25)	27.38 (695.45)	0.25 (6.35)
EPL-AEB-18.18.6-N3R	17 (431.8)	17 (431.8)	18 (457.2)	18 (457.2)	6.12 (155.45)	23.25 (590.55)	23.25 (590.55)	10.00 (254.00)	13.38 (339.85)	13.38 (339.85)	21.38 (543.05)	21.38 (543.05)	0.25 (6.35)
EPL-AEB-18.18.8-N3R	17 (431.8)	17 (431.8)	18 (457.2)	18 (457.2)	8.12 (206.25)	23.25 (590.55)	23.25 (590.55)	12.00 (304.80)	13.38 (339.85)	13.38 (339.85)	21.38 (543.05)	21.38 (543.05)	0.25 (6.35)
EPL-AEB-18.24.8-N3R	16.38 (416.1)	22.13 (562.1)	17.37 (441.2)	23.37 (593.6)	8.00 (203.20)	22.38 (568.45)	28.38 (720.85)	11.75 (298.45)	13.00 (330.20)	19.00 (482.60)	21.00 (533.40)	27.00 (685.80)	0.25 (6.35)
EPL-AEB-18.24.10-N3R	16.38 (416.1)	22.13 (562.1)	17.23 (437.6)	23.23 (590.0)	10.00 (254.00)	22.38 (568.45)	28.38 (720.85)	13.75 (349.25)	13.00 (330.20)	19.00 (482.60)	21.25 (539.75)	27.00 (685.80)	0.25 (6.35)
EPL-AEB-18.30.8-N3R	16 (406.4)	29 (736.6)	17.87 (453.9)	30.8 (782.3)	8.00 (203.20)	22.37 (568.20)	35.37 (898.40)	12.37 (314.20)	13.25 (336.55)	26.5 (673.10)	21.00 (533.40)	34.50 (876.30)	0.25 (6.35)
EPL-AEB-18.36.8-N3R	16 (406.4)	34 (863.6)	17.37 (441.2)	35.37 (898.4)	8.00 (203.20)	22.38 (568.45)	40.38 (1025.65)	12.38 (314.45)	13.25 (336.55)	31.50 (800.10)	21.25 (539.75)	39.50 (1003.30)	0.25 (6.35)
EPL-AEB-18.36.10-N3R	16 (406.4)	34 (863.6)	17.23 (437.6)	35.23 (894.8)	10.00 (254.00)	22.38 (568.45)	40.38 (1025.65)	14.38 (365.25)	13.25 (336.55)	31.50 (800.10)	21.25 (539.75)	39.50 (1003.30)	0.25 (6.35)
EPL-AEB-20.36.11-N3R	18.75 (476.3)	34.75 (882.7)	20.14 (511.6)	36.14 (918.0)	11.13 (282.70)	26.44 (671.58)	42.44 (1077.98)	15.56 (395.22)	15.75 (400.05)	31.75 (806.45)	23.75 (603.25)	39.75 (1009.65)	0.25 (6.35)
EPL-AEB-24.24.8-N3R	22.25 (565.2)	22.25 (565.2)	23.37 (593.6)	23.37 (593.6)	8.06 (204.72)	28.38 (720.85)	28.38 (720.85)	12.19 (309.63)	19.50 (495.30)	19.50 (495.30)	27.50 (698.50)	27.50 (698.50)	0.25 (6.35)
EPL-AEB-24.24.10-N3R	22.25 (565.2)	22.25 (565.2)	23.23 (590.0)	23.23 (590.0)	10.06 (255.52)	28.38 (720.85)	28.38 (720.85)	14.19 (360.43)	19.50 (495.30)	19.50 (495.30)	27.50 (698.50)	27.50 (698.50)	0.25 (6.35)
EPL-AEB-24.30.8-N3R	23 (584.2)	29 (736.6)	24 (609.6)	30 (762.0)	8.12 (206.25)	29.25 (742.95)	35.25 (895.35)	12.40 (314.96)	19.56 (496.82)	25.56 (649.23)	27.56 (700.03)	33.56 (852.43)	0.25 (6.35)
EPL-AEB-24.36.8-N3R	23 (584.2)	35 (889.0)	24 (609.6)	36 (914.4)	8.12 (206.25)	29.25 (742.95)	41.25 (1047.75)	12.40 (314.96)	19.56 (496.82)	31.56 (801.63)	27.56 (700.03)	39.56 (1004.83)	0.25 (6.35)
EPL-AEB-24.36.10-N3R	23 (584.2)	35 (889.0)	24 (609.6)	36 (914.4)	10.12 (257.05)	29.25 (742.95)	41.25 (1047.75)	14.40 (365.76)	19.56 (496.82)	31.56 (801.63)	27.56 (700.03)	39.56 (1004.83)	0.25 (6.35)



SKU	CONDUIT AREA									OPERATOR AND SPECS			
	N	O	P	Q	R	S	T	U	V	W	X		
EPL-AEB-6.6.4-N3R	1.18 (30.0)	2.81 (71.4)	2.44 (62.0)	4.88 (124.0)	2.75 (69.85)	2.81 (71.37)	2.44 (61.98)	4.88 (123.95)	2.5 (63.50)	5 (127.00)	5 (127.00)	LONG OPERATORS	
EPL-AEB-6.8.4-N3R	1.18 (30.0)	2.81 (71.4)	3.44 (87.4)	6.88 (174.8)	2.75 (69.85)	2.81 (71.37)	2.44 (61.98)	4.88 (123.95)	2.5 (63.50)	7 (177.80)	5 (127.00)		
EPL-AEB-6.12.4-N3R	1.18 (30.0)	2.81 (71.4)	5.00 (127.0)	10.00 (254.0)	2.75 (69.85)	2.81 (71.37)	2.44 (61.98)	4.88 (123.95)	2.5 (63.50)	11 (279.40)	5 (127.00)		
EPL-AEB-8.8.6-N3R	1.18 (30.0)	4.81 (122.2)	3.44 (87.4)	6.88 (174.8)	3.75 (95.25)	4.81 (122.17)	3.44 (87.38)	6.88 (174.75)	2.5 (63.50)	7 (177.80)	7 (177.80)		
EPL-AEB-8.10.4-N3R	1.18 (30.0)	2.81 (71.4)	4.44 (112.8)	8.88 (225.6)	2.75 (69.85)	2.81 (71.37)	3.44 (87.38)	6.88 (174.75)	2.5 (63.50)	9 (228.60)	7 (177.80)		
EPL-AEB-8.10.6-N3R	1.18 (30.0)	4.18 (106.2)	4.44 (112.8)	8.88 (225.6)	3.45 (87.63)	4.81 (122.17)	3.44 (87.38)	6.88 (174.75)	2.5 (63.50)	9 (228.60)	7 (177.80)		
EPL-AEB-8.12.6-N3R	1.78 (45.2)	3.75 (95.3)	5 (127.0)	10 (254.0)	3.66 (92.96)	3.75 (95.25)	3 (76.20)	6 (152.40)	2.5 (63.50)	11 (279.40)	7 (177.80)		
EPL-AEB-8.12.8-N3R	1.78 (45.2)	5.75 (146.1)	5 (127.0)	10 (254.0)	4.66 (118.36)	5.75 (146.05)	3 (76.20)	6 (152.40)	2.5 (63.50)	11 (279.40)	7 (177.80)		
EPL-AEB-10.10.6-N3R	1.91 (48.5)	3.75 (95.3)	4 (101.6)	8 (203.2)	3.79 (96.27)	3.75 (95.25)	4 (101.60)	8 (203.20)	2.5 (63.50)	9 (228.60)	9 (228.60)		
EPL-AEB-10.10.8-N3R	1.91 (48.5)	5.75 (146.1)	4 (101.6)	8 (203.2)	4.79 (121.67)	5.75 (146.05)	4 (101.60)	8 (203.20)	2.5 (63.50)	9 (228.60)	9 (228.60)		
EPL-AEB-10.14.6-N3R	1.91 (48.5)	3.75 (95.3)	6 (152.4)	12 (304.8)	3.79 (96.27)	3.75 (95.25)	4 (101.60)	8 (203.20)	2.5 (63.50)	13 (330.20)	9 (228.60)		
EPL-AEB-10.14.8-N3R	1.91 (48.5)	5.75 (146.1)	6 (152.4)	12 (304.8)	4.79 (121.67)	5.75 (146.05)	4 (101.60)	8 (203.20)	2.5 (63.50)	13 (330.20)	9 (228.60)		
EPL-AEB-12.12.6-N3R	1.88 (47.8)	3.81 (96.8)	4.94 (125.5)	9.88 (251.0)	4.00 (101.60)	3.81 (96.77)	4.94 (125.48)	9.88 (250.95)	2.5 (63.50)	10 (254.00)	10 (254.00)		
EPL-AEB-12.12.8-N3R	1.88 (47.8)	5.81 (147.6)	4.94 (125.5)	9.88 (251.0)	5.00 (127.00)	5.81 (147.57)	4.94 (125.48)	9.88 (250.95)	2.5 (63.50)	10 (254.00)	10 (254.00)		
EPL-AEB-12.18.6-N3R	2.06 (52.3)	3.13 (79.5)	7.94 (201.7)	15.88 (403.4)	3.88 (98.55)	3.75 (95.25)	4.94 (125.48)	9.88 (250.95)	2.5 (63.50)	16 (406.40)	10 (254.00)		
EPL-AEB-12.18.8-N3R	2.06 (52.3)	5.13 (130.3)	7.94 (201.7)	15.88 (403.4)	4.88 (123.95)	5.75 (146.05)	4.94 (125.48)	9.88 (250.95)	2.5 (63.50)	16 (406.40)	10 (254.00)		
EPL-AEB-12.24.6-N3R	2.13 (54.1)	3.13 (79.5)	10.94 (277.9)	21.88 (555.8)	3.94 (100.08)	3.81 (96.77)	4.94 (125.48)	9.88 (250.95)	2.5 (63.50)	22.25 (565.15)	10.25 (260.35)		
EPL-AEB-12.24.8-N3R	2.13 (54.1)	5.13 (130.3)	10.94 (277.9)	21.88 (555.8)	4.94 (125.48)	5.81 (147.57)	4.94 (125.48)	9.88 (250.95)	2.5 (63.50)	22.25 (565.15)	10.25 (260.35)		
EPL-AEB-12.24.12-N3R	2.13 (54.1)	9.13 (231.9)	10.94 (277.9)	21.88 (555.8)	6.94 (176.28)	9.81 (249.17)	4.94 (125.48)	9.88 (250.95)	2.5 (63.50)	22.25 (565.15)	10.25 (260.35)		
EPL-AEB-12.36.8-N3R	2.09 (53.1)	5.75 (146.1)	17 (431.8)	34 (863.6)	4.97 (126.24)	5.75 (146.05)	5 (127.00)	10 (254.00)	2.5 (63.50)	35 (889.00)	11 (279.40)		
EPL-AEB-12.36.10-N3R	2.09 (53.1)	7.75 (196.9)	17 (431.8)	34 (863.6)	5.97 (151.64)	7.75 (196.85)	5 (127.00)	10 (254.00)	2.5 (63.50)	35 (889.00)	11 (279.40)		
EPL-AEB-14.14.6-N3R	2.09 (53.1)	3.75 (95.3)	6 (152.4)	12 (304.8)	3.97 (100.84)	3.75 (95.25)	6 (152.40)	12 (304.80)	2.5 (63.50)	13 (330.20)	13 (330.20)		
EPL-AEB-14.14.8-N3R	2.09 (53.1)	5.75 (146.1)	6 (152.4)	12 (304.8)	4.97 (126.24)	5.75 (146.05)	6 (152.40)	12 (304.80)	2.5 (63.50)	13 (330.20)	13 (330.20)		
EPL-AEB-16.16.6-N3R	2.06 (53.1)	3.75 (95.3)	6.94 (176.3)	13.88 (352.6)	4.18 (106.17)	3.75 (95.25)	6.94 (176.28)	13.88 (352.55)	2.5 (63.50)	14 (355.60)	14 (355.60)		
EPL-AEB-16.16.8-N3R	2.06 (53.1)	5.75 (146.1)	6.94 (176.3)	13.88 (352.6)	5.18 (131.57)	5.75 (146.05)	6.94 (176.28)	13.88 (352.55)	2.5 (63.50)	14 (355.60)	14 (355.60)		
EPL-AEB-16.24.8-N3R	2.34 (59.4)	5.75 (146.1)	11 (279.4)	22 (558.8)	5.22 (132.59)	5.75 (146.05)	7 (177.80)	14 (355.60)	2.5 (63.50)	22 (558.80)	14 (355.60)		
EPL-AEB-16.24.10-N3R	2.34 (59.4)	7.75 (196.9)	11 (279.4)	22 (558.8)	6.22 (157.99)	7.75 (196.85)	7 (177.80)	14 (355.60)	2.5 (63.50)	22 (558.80)	14 (355.60)		
EPL-AEB-18.18.6-N3R	2.34 (59.4)	3.75 (95.3)	8 (203.2)	16 (406.4)	4.22 (107.19)	3.75 (95.25)	8 (203.20)	16 (406.40)	2.5 (63.50)	16 (406.40)	16 (406.40)		
EPL-AEB-18.18.8-N3R	2.34 (59.4)	5.75 (146.1)	8 (203.2)	16 (406.4)	5.22 (132.59)	5.75 (146.05)	8 (203.20)	16 (406.40)	2.5 (63.50)	16 (406.40)	16 (406.40)		
EPL-AEB-18.24.8-N3R	2.32 (58.9)	4.88 (124.0)	10.94 (277.9)	21.88 (555.8)	5.00 (127.00)	5.56 (141.22)	7.94 (201.68)	15.88 (403.35)	2.5 (63.50)	22 (558.80)	16 (406.40)		
EPL-AEB-18.24.10-N3R	2.32 (58.9)	6.88 (174.8)	10.94 (277.9)	21.88 (555.8)	6.00 (152.40)	8.56 (217.42)	7.94 (201.68)	15.88 (403.35)	2.5 (63.50)	22 (558.80)	16 (406.40)		
EPL-AEB-18.30.8-N3R	2.50 (63.5)	4.88 (124.0)	14.44 (366.8)	28.88 (733.6)	5.18 (131.57)	6.06 (153.92)	7.94 (201.68)	15.88 (403.35)	2.5 (63.50)	29 (736.60)	16 (406.40)		
EPL-AEB-18.36.8-N3R	2.50 (63.5)	4.88 (124.0)	16.94 (430.3)	33.88 (860.6)	5.18 (131.57)	6.06 (153.92)	7.94 (201.68)	15.88 (403.35)	2.5 (63.50)	34 (863.60)	16 (406.40)		
EPL-AEB-18.36.10-N3R	2.50 (63.5)	6.88 (174.8)	16.94 (430.3)	33.88 (860.6)	6.18 (156.97)	8.06 (204.72)	7.94 (201.68)	15.88 (403.35)	2.5 (63.50)	34 (863.60)	16 (406.40)		
EPL-AEB-20.36.11-N3R	2.47 (62.7)	8.44 (214.4)	16.72 (424.7)	33.97 (862.8)	6.88 (174.75)	8.47 (215.14)	8.72 (221.49)	17.47 (443.74)	2.5 (63.50)	34.88 (885.95)	18.88 (479.55)		
EPL-AEB-24.24.8-N3R	2.88 (73.2)	5.50 (139.7)	10.88 (276.4)	21.88 (555.8)	5.88 (149.35)	5.50 (139.70)	10.94 (277.88)	21.88 (555.75)	2.5 (63.50)	22 (558.80)	22 (558.80)		
EPL-AEB-24.24.10-N3R	2.88 (73.2)	7.50 (190.5)	10.88 (276.4)	21.88 (555.8)	6.88 (174.75)	7.50 (190.50)	10.94 (277.88)	21.88 (555.75)	2.5 (63.50)	22 (558.80)	22 (558.80)		
EPL-AEB-24.30.8-N3R	2.47 (62.7)	5.75 (146.1)	14 (355.6)	28 (711.2)	5.35 (135.89)	5.75 (146.05)	11 (279.40)	22 (558.80)	3.0 (76.20)	28 (711.20)	22 (558.80)		
EPL-AEB-24.36.8-N3R	2.47 (62.7)	5.75 (146.1)	17 (431.8)	34 (863.6)	5.35 (135.89)	5.75 (146.05)	11 (279.40)	22 (558.80)	3.0 (76.20)	34 (863.60)	22 (558.80)		
EPL-AEB-24.36.10-N3R	2.47 (62.7)	7.75 (196.9)	17 (431.8)	34 (863.6)	6.35 (161.29)	7.75 (196.85)	11 (279.40)	22 (558.80)	3.0 (76.20)	34 (863.60)	22 (558.80)		

LARSON ELECTRONICS LLC
9419 E US HWY 175
KEMP, TX 75143

Web: larsonelectronics.com
Email: sales@larsonelectronics.com
Phone: 1-800-369-6671
Intl: +1-214-616-6180
Fax: 903-498-3364

FOLLOW US

facebook.com/LarsonElectronics
twitter.com/LarsonLights
youtube.com/LEMagnalight
instagram.com/LarsonLights

