

26W Explosion Proof Bulkhead White LED Light - Class I, II, III - 3380 Lumens - Factory Sealed - 480V

EPL-BHL-LP.12-LED-480V

Please see last page for supporting documentation for this product(certificates, CAD files & drawings, IES files, wiring diagrams, etc).



EPL-BHL-LP.12-LED-480V Explosion Proof Bulkhead LED Fixture

Listing: NRTL Listed for United States and Canada

Lamp Technology: LED

Dimensions: 18"L x 5"W x 3"H

Weight: 4.75 lbs

Voltage: 480 V AC

Total Watts: 26W

Lumens: 3,380

Luminous Efficacy: 130 Lm/W

Lamp Life: 60,000+ Hours

LED Color: White

Color Temperature: 5000K, 4000K, or 3000K

Color Rendering Index: >75 CRI

Lamp Type: -

Lamp Base: -

Replacement Lamp: -

Beam Angle: 100° Horizontal, 140° Vertical

Lighting Configuration: Wide Flood Pattern

Power Efficiency: >95%

Power Factor: 0.992

Amperage: 0.05 A @ 480 V

Ambient Operating Temp Range: -50°C to +65°C

Operating Temp Rating: T6

Housing Material: Copper Free Cast Aluminum

Lens Material: Hardened Borosilicate Glass

Mounting: 3/4" Pendant & Swivel Mount - Both Ship w/ Fixture

Wiring: Terminal Strips

Wiring Hub: 3/4" NPT

Ratings/Approvals

Class I, Division 1, Groups C and D

Class I, Division 2, Groups A, B, C, D

Class II, Divisions 1 & 2 Groups E, F and G

Class III, Divisions 1 & 2

T6 Temperature Rating

NRTL Certified to UL 844 Ed. 13

NRTL Certified to UL 1598

Certified to C22.2 No. 137 Rev 2014

Certified to C22.2 No. 250.0

Paint Spray Booth Approved

Factory Sealed Light Fixture

Special Orders - Requirements

Contact us for special requirements

Toll Free: 1-800-369-6671

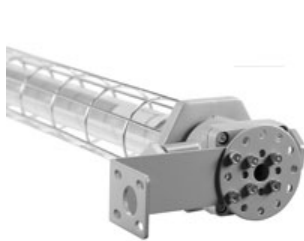
Intl: 1-214-616-6180

Fax: 1-903-498-3364

E-mail: sales@larsonelectronics.com

The EPL-BHL-LP.12-LED-480V from Larson Electronics is an Explosion Proof Bulkhead LED Light that provides reliable illumination in rugged environments and combustible sites. This explosion proof LED light has a T6 temperature rating and is equipped with terminal strips for wiring. Protected by a copper-free aluminum housing, the LED unit can be installed in flammable areas where hazardous work and tasks are frequently conducted. For best results, operators can mount the light at low to medium heights.

This explosion proof bulkhead fixture provides 3,380 lumens of high quality white light while only drawing 26 watts. It is available with either a 5000K, 4000K, or 3000K color temperature. The copper free aluminum alloy body is powder coated for added durability and an attractive aesthetic appearance. Special heat dissipating design in conjunction with LED technology helps this fixture to achieve an excellent 60,000 hour rated lifespan with 80% lumen retention at the 60,000 hour mark. Light weight and a low profile make this unit an attractive alternative to larger and heavier older fixtures and requires less hardware to install.



[Click Photo to Enlarge](#)



[Click Photo to Enlarge](#)



[Click Photo to Enlarge](#)

Instead of using diffused glass, optics, or reflectors to distribute the light, Larson Electronics has positioned the boards within the fixture to provide a wide area light without sacrificing quality or light output. Two offset LED assemblies within the fixture allow this explosion proof linear lamp to provide a brilliant 100° horizontal beam spread and 140° vertical beam spread while achieving a 3,380 lumen output to maintain a small form factor. The LED assembly is protected behind a tempered borosilicate glass tube that is protected by an aluminum wire guard to prevent from accident damage to the light fixture.

Measuring only 5" in width, this white light fixture takes up half the surface area as a standard one foot explosion proof fixture. The surface mount fixture's overall height with adjustable surface mount bracket is under 4.5", including the surface mount bracket itself, making the EPL-BHL-LP.12-LED-480V one of the lowest profile explosion proof light fixtures on the market. When compared to our EPL-24-2L-T6HO fixture, the EPL-BHL-LP.12-LED-480V fixture produces twice the light output while taking up less than half the surface area. The EPL-BHL-LP.12-LED-480V is an ideal for applications with little space where low profile fixtures are required.

LED Benefits: Unlike gas burning and arc type lamps that have glass bulbs, LEDs have no filaments or fragile housings to break during operation and/or transportation.

Instead of heating a small filament or using a combination of gases to produce light, light emitting diodes (LEDs) use semi-conductive materials that illuminate when electric current is applied, providing instant illumination with no warm up or cool down time before re-striking. Because there is no warm up period, this light can be cycled on and off with no reduction in lamp life.

LED lights run at significantly cooler temperatures than traditional metal halide and high pressure sodium lights and contain no harmful gases, vapors, or mercury, making them both safer and more energy efficient. No extra energy is wasted in cooling enclosed work areas due to external heat emissions from bulb type lights, and the operator risks associated with traditional lighting methods, such as accidental burns and exposure to hazardous substances contained in the glass bulbs, are eliminated. In addition, LEDs are also safer for the environment as they are 100% recyclable, which eliminates the need for costly special disposal services required with traditional gas burning and arc type lamps.

This white light is universal voltage capable and can be operated with 480 V AC. This explosion proof LED light fixture is IP67 rated, dust-proof, and protected against high pressure jets and temporary submersion. The cast aluminum body and LED lamp give this light excellent durability and resistance to vibration and impacts. The housing is specially designed to dissipate heat which increases the efficiency and lifespan of the LEDs and electronics.

Wiring: These LED light fixtures are equipped with terminal strips. Electricians bring customer supplied wire to the terminal strips on the fixture for power connection. The

wiring of these terminal strip equipped units must be conducted via wiring methods laid out in NFPA 70 / NEC Code Book Article 500. This unit is a factory sealed fixture.

The EPL-BHL-LP.12-LED-480V is offered with pendant or surface mounting options.

Adjustable Surface Mount Brackets: Each L-shape bracket is machined with three holes per bracket to attach to the light fixture. The angle of the bracket is set by aligning the machined set screw holes on the mounting bracket with index holes attached to the fixture. The bracket itself is mounted via two bolt hole at the top of the bracket. There are two brackets, one on each end of the light. Once the brackets are mounted to a surface (ceiling, floor or wall), the light fixture can be removed from the brackets by removing the set screws that hold the bracket to the mounting bracket and adjusting the fixture. The fixture can be adjusted at 15° intervals.

Suspension Mounting: Pendant mount fixtures hang from the conduit and are suspended by rigid pipe. Each fixture features a 3/4" NPT junction box on one end, and a eyelet other end of the fixture. Operators bring rigid pipe down to the threaded mounting hub. Customer provided wiring is fed down through the rigid pipe to the junction box and tied in to the fixture`s terminal strips, completing the electrical connection.

Chain Hang Mounting: Chain hang mount fixtures hang from the chains or metal rope. Two eyelets, one at each end of the fixture, allow operators to attach safety hooks to the fixture during installation. Operators bring flex conduit down to the threaded mounting hub. Customer provided wiring is fed down through the flex conduit to the junction box and tied in to the fixture`s terminal strips, completing the electrical connection.

Suggested Applications: Bulkhead lighting, high fog, outdoor locations, paint spray booths, aircraft maintenance, oil drilling rigs, refineries, solvent and cleaning areas, gas processing plants, chemical manufacturing, waste water treatment plants, gas processing plants, offshore applications, oil tankers, mud tanks, sand mines, mining, cold weather applications.

At Larson Electronics, we do more than meet your lighting needs. We also provide replacement, retrofit, and upgrade parts as well as industrial grade power accessories. Our craftsmen can custom build any lighting system and/or accessories to fit the unique demands of your operation. A commitment to honesty, quality, and dependability has made Larson Electronics a leader in the lighting and electronics business since 1973. Contact us today at 800-369-6671 or message sales@larsonelectronics.com for more information about our custom options tailored to meet your specific industry needs.

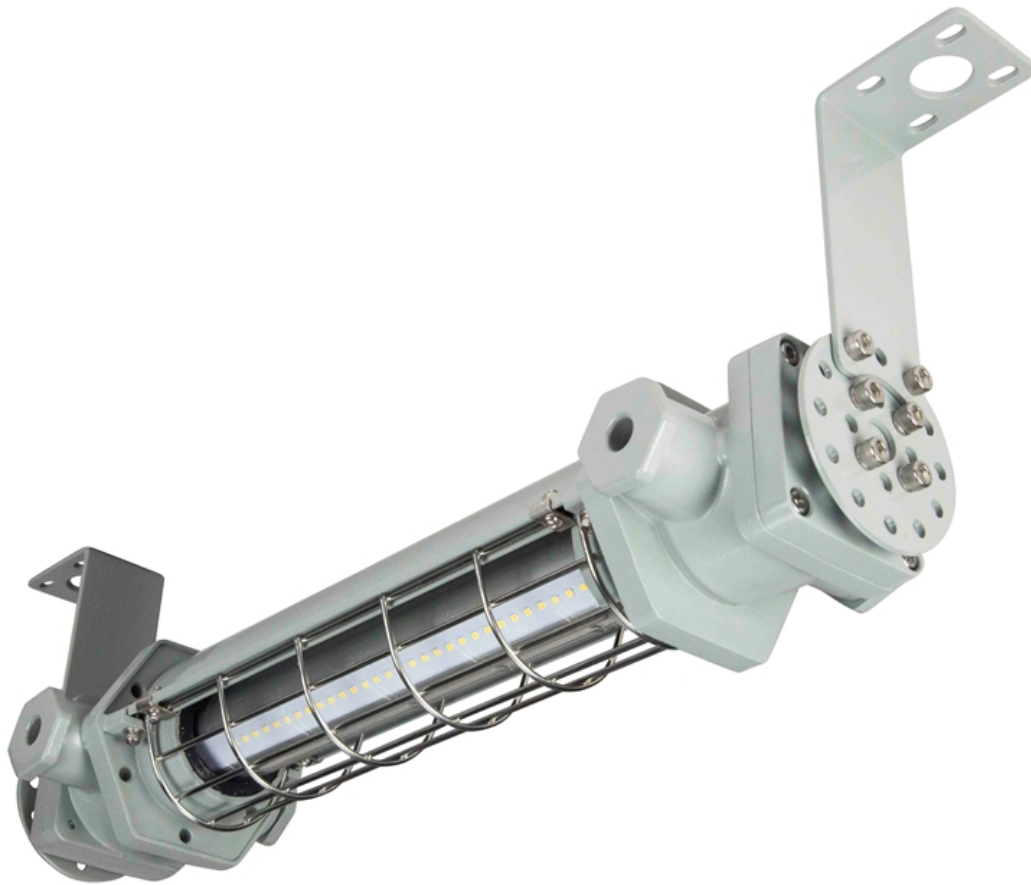


Frequently Asked Questions (FAQ)









Warranty: 60 Months

Options:

EPL-BHL-LP.12-LED-480V-Color Temp

Example: EPL-BHL-LP.12-LED-480V-50K

Color Temp	
5000K	-50K
4000K	-40K
3000K	-30K

Links (Click on the below items to view):

- [HigResPic1](#)
- [HigResPic2](#)
- [HigResPic3](#)
- [HigResPic4](#)
- [HigResPic5](#)
- [HigResPic6](#)
- [HigResPic7](#)
- [HigResPic8](#)
- [HigResPic9](#)
- [HigResPic10](#)
- [ISO 9001 Certification](#)
- [Business Certificate](#)