

40 Watt Explosion Proof Low Profile LED Fixture - 5,400 Lumens - 347V - Class 1 & 2 Div 1 & 2 EPL-LP-24-LED-347V

Please see last page for supporting documentation for this product(certificates, CAD files & drawings, IES files, wiring diagrams, etc).



EPL-LP-24-LED-347V Explosion Proof Low Profile LED

Lamp Type: LED

Listing: United States, Canada, Europe, Asia

Dimensions: 30"L x 5"W x 3"H

Weight: 9.5 lbs

Voltage: 347V AC

Total Watts: 40W

Lumens: 5,400

Luminous Efficacy: 135 Lm/W

Lamp Life: 60,000+ Hours

Color Temp: 5000K, 4500K, 3000K

Color Rendering Index: >75 CRI

Beam Angle: 100° Horizontal, 140° Vertical

Lighting Configuration: Wide Flood Pattern

Power Efficiency: >95%

Power Factor: 0.992

Amperage: 0.33A @ 120V, 0.17 @ 240V, 0.14 @ 277V

Ambient Operating Temp Range: -50°C to +65°C

Operating Temp Rating: T6

Housing Material: Copper Free Cast Aluminum

Lens Material: Hardened Borosilicate Glass

Mounting: 3/4" Pendant & Swivel Mount - Both Ship w/ Fixture

Wiring: Terminal Strips

Wiring Hub: 3/4" NPT

Ratings/Approvals

Class I, Division 1, Groups C and D

Class I, Division 2, Groups A, B, C, D

Class II, Divisions 1 & 2 Groups E, F and G

Class III, Divisions 1 & 2

T6 Temperature Rating

NRTL Certified to UL 844 Ed. 13

NRTL Certified to UL 1598

Certified to C22.2 No. 137 Rev 2014

Certified to C22.2 No. 250.0

Paint Spray Booth Approved

Factory Sealed Light Fixture

Special Orders- Requirements

Contact us for special requirements

Toll Free: 1-800-369-6671

Intl: 1-214-616-6180

Fax: 1-903-498-3364

E-mail: sales@larsonelectronics.com

The EPL-LP-24-LED-347V from Larson Electronics is a Low Profile Explosion Proof Light Fixture that provides operators with a powerful and energy efficient alternative to traditional hazardous location luminaries. LED technology and compact design makes this lamp an excellent replacement upgrade option for bulky and high maintenance cost older fixtures. This explosion proof LED light has a T6 temperature rating and carries a paint spray booth, and is approved for use in United States and Canada markets. It is ideal for applications such as paint booths, oil rigs, offshore applications, petrochemical, manufacturing, chemical storage, water treatment centers, and food processing plants where a where flammable gases, vapors, or dusts exist or stand the potential to exist. The EPL-LP-24-LED-347V is equipped with terminal strips for wiring.

This Class I Divisions 1 & 2, Class II Divisions 1 & 2 low profile explosion proof

light fixture provides 5,400 lumens of high quality light while only drawing 40 watts. The copper free aluminum alloy body is powder coated for added durability and an attractive aesthetic appearance. Special heat dissipating design in conjunction with LED technology helps this fixture to achieve an excellent 60,000 hour rated lifespan with 80% lumen retention at the 60,000 hour mark. Light weight and a low profile make this unit an attractive alternative to larger and heavier older fixtures and requires less hardware to install.

[Click Photo to Enlarge](#)

[Click Photo to Enlarge](#)

[Click Photo to Enlarge](#)

The EPL-LP-24-LED-347V from Larson Electronics is an integrated low profile linear explosion proof LED light fixture with a unique design. Instead of using diffused glass, optics, or reflectors to distribute the light, Larson Electronics has positioned the boards within the fixture to provide a wide area light without sacrificing quality or light output. Two offset LED assemblies within the fixture allow this explosion proof linear lamp to provide a brilliant 100° horizontal beam spread and 140° vertical beam spread while achieving a 5,400 lumen output to maintain a small form factor. The LED assembly is protected behind a tempered borosilicate glass tube that is protected by an aluminum wire guard to prevent from accident damage to the light fixture.

Measuring only 6.89" in width, this fixture takes up half the surface area as a standard four foot 2-lamp explosion proof fixture. The surface mount fixture's overall height with adjustable surface mount bracket is 7.57", including the surface mount bracket itself, making the EPL-LP-24-LED-347V one of the lowest profile explosion proof light fixtures on the market. When compared to our EPL-24-2L-T6HO fixture, the EPL-LP-24-LED-347V fixture produces twice the light output while taking up less than half the surface area. The EPL-LP-24-LED-347V is an ideal for applications with little space where low profile fixtures are required.

LED Benefits: Unlike gas burning and arc type lamps that have glass bulbs, LEDs have no filaments or fragile housings to break during operation and/or transportation. Instead of heating a small filament or using a combination of gases to produce light, light emitting diodes (LEDs) use semi-conductive materials that illuminate when electric current is applied, providing instant illumination with no warm up or cool down time before re-striking. Because there is no warm up period, this light can be cycled on and off with no reduction in lamp life. LED lights run at significantly cooler temperatures than traditional metal halide and high pressure sodium lights and contain no harmful gases, vapors, or mercury, making them both safer and more energy efficient. No extra energy is wasted in cooling enclosed work areas due to external heat emissions from bulb type lights, and the operator risks associated with traditional lighting methods, such as accidental burns and exposure to hazardous substances contained in the glass bulbs, are eliminated. In addition, LEDs are also safer for the environment as they are 100% recyclable, which eliminates the need for costly special disposal services required with traditional gas burning and arc type lamps.

This explosion proof LED light fixture is IP67 rated, dust-proof, and protected against high pressure jets and temporary submersion. The cast aluminum body and LED lamp give this light excellent durability and resistance to vibration and impacts. The housing is specially designed to dissipate heat which increases the efficiency and lifespan of the LEDs and electronics.

This LED light produces 5,400 lumens with a color temperature of 5000K and a color rendering index of 85 which produces colors and details much more accurately than high pressure sodium or mercury vapor luminaries. We also offer a 3000K warm white and 4500K natural white color temperature options (longer lead times may apply for non-standard temperatures). The EPL-LP-24-LED-347V is offered with pendant or surface mounting options.

Voltage: This explosion proof LED light is universal voltage capable and can be operated with 347V, 50/60 Hz without modifications to the fixture. A low voltage version of this LED fixture that operates on AC/DC voltages from 11-25 volts is also available. Additional voltage configurations available at additional cost. 18-

48V AC/DC voltage models are available for network systems and marine vessels. We also offer an additional 120-277V and 347V high voltage, 125-250V DC, and 0-10V dimmable versions of this explosion proof LED light fixture.

Wiring: These LED light fixtures are equipped with terminal strips. Electricians bring customer supplied wire to the terminal strips on the fixture for power connection. The wiring of these terminal strip equipped units must be conducted via wiring methods laid out in NFPA 70 / NEC Code Book Article 500. This unit is a factory sealed fixture.

Adjustable Surface Mount Brackets: Each L-shape bracket is machined with three holes per bracket to attach to the light fixture. The angle of the bracket is set by aligning the machined set screw holes on the mounting bracket with with index holes attached to the fixture. The bracket itself is mounted via two bolt hole at the top the bracket. There are two brackets, one on each end of the light. Once the brackets are mounted to a surface (ceiling, floor or wall), the light fixture can be removed from the brackets by removing the set screws that hold the bracket to the mounting bracket and adjusting the fixture. The fixture can be adjusted at 15° intervals.

Suspension Mounting: Pendant mount fixtures hang from the conduit and are suspended by rigid pipe. Each fixture features a 3/4" NPT junction box on one end, and a eyelet other end of the fixture. Operators bring rigid pipe down to the threaded mounting hub. Customer provided wiring is fed down through the rigid pipe to the junction box and tied in to the fixture`s terminal strips, completing the electrical connection.

Chain Hang Mounting: Chain hang mount fixtures hang from the chains or metal rope. Two eyelets, one at each end of the fixture, allow operators to attach safety hooks to the fixture during installation. Operators bring flex conduit down to the threaded mounting hub. Customer provided wiring is fed down through the flex conduit to the junction box and tied in to the fixture`s terminal strips, completing the electrical connection.

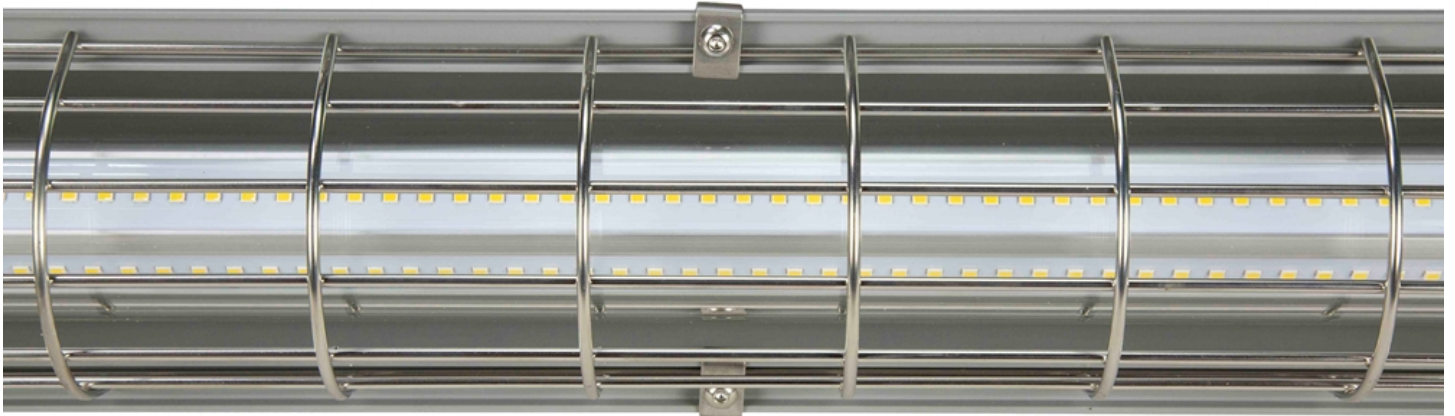
Suggested Applications: Paint spray booths, aircraft maintenance, oil drilling rigs, refineries, solvent and cleaning areas, gas processing plants, chemical manufacturing, waste water treatment plants, gas processing plants, offshore applications, oil tankers, mud tanks, sand mines, mining, cold weather applications.

At Larson Electronics, we do more than meet your lighting needs. We also provide replacement, retrofit, and upgrade parts as well as industrial grade power accessories. Our craftsmen can custom build any lighting system and/or accessories to fit the unique demands of your operation. A commitment to honesty, quality, and dependability has made Larson Electronics a leader in the lighting and electronics business since 1973. Contact us today at 800-369-6671 or message sales@larsonelectronics.com for more information about our custom options tailored to meet your specific industry needs.

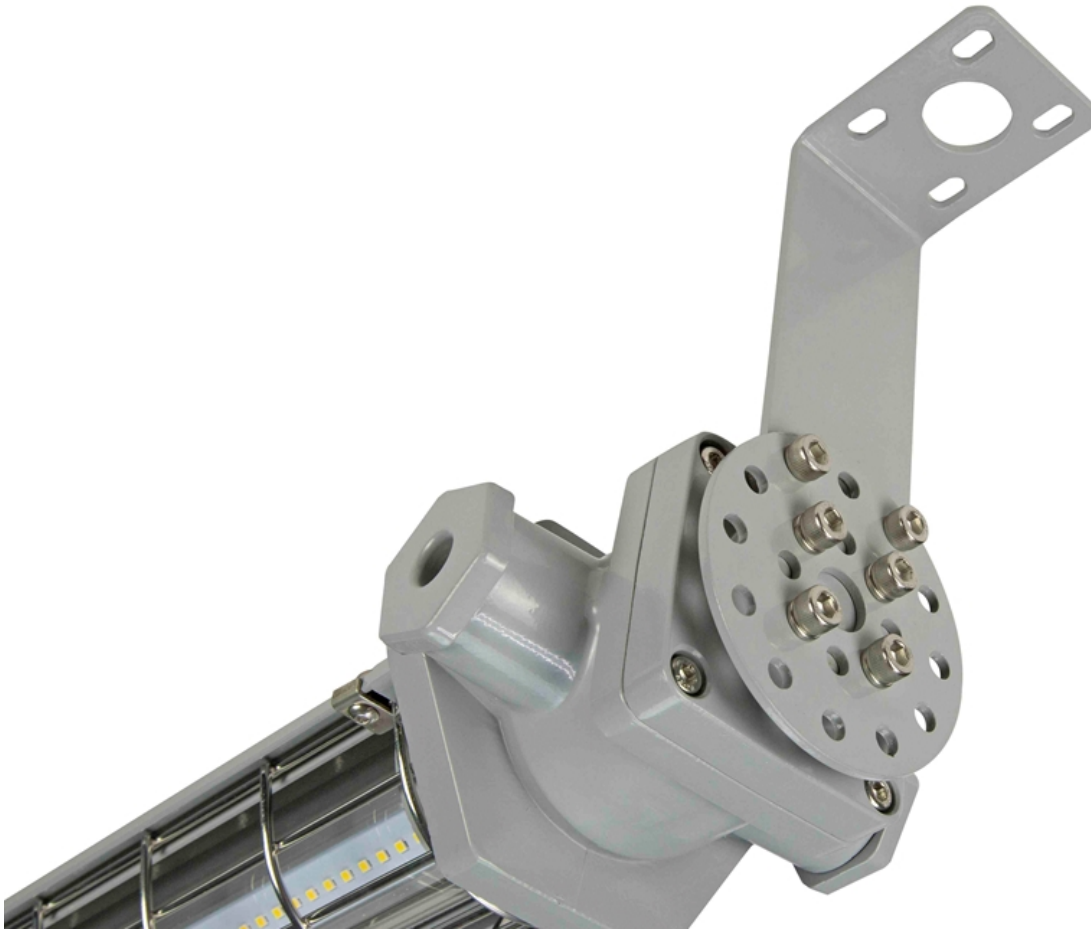


Frequently Asked Questions (FAQ)









Options:

EPL-LP-24-LED-347V-Mount-Color Temp

Example: EPL-LP-24-LED-347V-SFC-50K

Mount	
SURFACE	-SFC
PENDANT	-PND

Color Temp	
5000K	-50K
4500K	-45K
3000K	-30K

Links (Click on the below items to view):

- [Dimensional Drawing 2D](#)
- [SpecSheetRussian](#)
- [SpecSheetSpanish](#)
- [STEP File \(3D CAD Model\)](#)
- [HigResPic1](#)
- [HigResPic2](#)
- [HigResPic3](#)
- [HigResPic4](#)
- [HigResPic5](#)
- [HigResPic6](#)
- [HigResPic7](#)
- [HigResPic8](#)
- [ISO 9001 Certification](#)
- [Business Certificate](#)