

40W Explosion Proof Low Profile LED Fixture - Class I, II, III - 5,400 lms - 50' SOOW Cord w/ EXP Cord Cap

EPL-LP-24-LED-50C-EPP

Please see last page for supporting documentation for this product(certificates, CAD files & drawings, IES files, wiring diagrams, etc).



EPL-LP-24-LED-50C-EPP Explosion Proof Low Profile LED

Listing: NRTL Listed for United States, Canada, Europe, Asia

Lamp Technology: LED

Dimensions: 30"L x 5"W x 3"H

Weight: 9.5 lbs

Voltage: Universal 100-277V AC, 50/60Hz or 12-24V AC/DC

Total Watts: 40W

Lumens: 5,400

Luminous Efficacy: 135 Lm/W

Lamp Life: 60,000+ Hours

Color Temp: 5000K, 4500K, 3000K

Color Rendering Index: >75 CRI

Beam Angle: 100° Horizontal, 140° Vertical

Lighting Configuration: Wide Flood Pattern

Power Efficiency: >95%

Power Factor: 0.992

Amperage: 0.33A @ 120V, 0.17 @ 240V, 0.14 @ 277V

Ambient Operating Temp Range: -50°C to +65°C

Operating Temp Rating: T6

Housing Material: Copper Free Cast Aluminum

Lens Material: Hardened Borosilicate Glass

Mounting: Surface Mount

Cord: 50' 16/3 SOOW Cord w/ EXP Cord Cap

EXP Cord Cap Options: 5-15, 5-20, or 6-20

Ratings/Approvals

Class I, Division 1, Groups C and D

Class I, Division 2, Groups A, B, C, D

Class II, Divisions 1 & 2 Groups E, F and G

Class III, Divisions 1 & 2

T6 Temperature Rating

NRTL Certified to UL 844 Ed. 13

NRTL Certified to UL 1598

Certified to C22.2 No. 137 Rev 2014

Certified to C22.2 No. 250.0

Paint Spray Booth Approved

Factory Sealed Light Fixture

Special Orders - Requirements

Contact us for special requirements

Toll Free: 1-800-369-6671

Intl: 1-214-616-6180

Fax: 1-903-498-3364

E-mail: sales@larsonelectronics.com

The Larson Electronics EPL-LP-24-LED-50C-EPP Low Profile Explosion Proof light fixture provides operators with a powerful and energy efficient alternative to traditional hazardous location luminaries. LED technology and compact design makes this lamp an excellent replacement upgrade option for bulky and older fixtures. This explosion proof LED light has a T6 temperature rating and carries paint spray booth, ATEX and IECEx certifications, and is approved for use in United States, Canada, Europe, and Asia markets. It is ideal for applications such as paint booths, oil rigs, offshore applications, petrochemical, manufacturing, chemical storage, water treatment centers, and food processing plants where flammable gases, vapors, or dust exist or stand the potential to exist. The EPL-LP-24-LED-50C-EPP is equipped with a

50' cord with an explosion proof cord cap.

This Class I Divisions 1 & 2, Class II Divisions 1 & 2 low profile explosion proof light fixture provides 5,400 lumens of high quality light while only drawing 40 watts. The copper free aluminum alloy body is powder coated for added durability and an attractive aesthetic appearance. Special heat dissipating design in conjunction with LED technology helps this fixture achieve an excellent 60,000-hour rated lifespan with 80% lumen retention at the 60,000-hour mark. Light weight and a low profile makes this unit an attractive alternative to larger and heavier older fixtures and requires less hardware to install.



[Click Photo to Enlarge](#)



[Click Photo to Enlarge](#)



[Click Photo to Enlarge](#)

The EPL-LP-24-LED-50C-EPP from Larson Electronics is an integrated low profile linear explosion proof LED light fixture with a unique design. Instead of using diffused glass, optics, or reflectors to distribute the light, Larson Electronics has positioned the boards within the fixture to provide a wide area light without sacrificing quality or light output. Two offset LED assemblies within the fixture allow this explosion proof linear lamp to provide a brilliant 100° horizontal beam spread and 140° vertical beam spread while achieving a 5,400 lumen output to maintain a small form factor. The LED assembly is protected behind a tempered borosilicate glass tube that is protected by an aluminum wire guard to prevent from accident damage to the light fixture. Measuring only 5" in width, this fixture takes up half the surface area as a standard two-foot, 2-lamp explosion proof fixture. The surface mount fixture's overall height with adjustable surface mount bracket is under 4.5", including the surface mount bracket itself, making the EPL-LP-24-LED-50C-EPP one of the lowest profile explosion proof light fixtures on the market. When compared to our EPL-24-2L-T6HO fixture, the EPL-LP-24-LED-50C-EPP fixture produces twice the light output while taking up less than half the surface area. The EPL-LP-24-LED-50C-EPP is ideal for applications with little space where low profile fixtures are required.

LED Benefits: Unlike gas burning and arc type lamps that have glass bulbs, LEDs have no filaments or fragile housings to break during operation and/or transportation. Instead of heating a small filament or using a combination of gases to produce light, light emitting diodes (LEDs) use semi-conductive materials that illuminate when electric current is applied, providing instant illumination with no warm up or cool down time before re-striking. Because there is no warm up period, this light can be cycled on and off with no reduction in lamp life.

LED lights run at significantly cooler temperatures than traditional metal halide and high pressure sodium lights and contain no harmful gases, vapors, or mercury, making them both safer and more energy efficient. No extra energy is wasted in cooling enclosed work areas due to external heat emissions from bulb type lights, and the operator risks associated with traditional lighting methods, such as accidental burns and exposure to hazardous substances contained in the glass bulbs, are eliminated. In addition, LEDs are also safer for the environment as they are 100% recyclable, which eliminates the need for costly special disposal services required with traditional gas burning and arc type lamps.

This light is universal voltage capable and is offered in multiple voltage configurations: 100-277V AC 50/60Hz for standard electrical circuits and 12-24V AC/DC for low voltage circuits. We also offer 347V AC and 480V AC single phase configurations of this LED light. This explosion proof LED light fixture is IP67 rated, dust-proof, and protected against high pressure jets and temporary submersion. The cast aluminum body and LED lamp give this light excellent durability and resistance to vibration and impacts.

The housing is specially designed to dissipate heat which increases the efficiency and lifespan of the LEDs and electronics.

[Click Photos to Enlarge](#)



[5-15 Straight Blade Plug](#)

[5-20 Straight Blade Plug](#)

[6-20 Straight Blade Plug](#)

Wiring and Plug: This LED light is equipped with a 50-foot 16/3 SOOW cord that is fitted with an industrial grade cord cap for easy connection to common wall outlets. Plug options include explosion proof 5-15 15 amp straight blade plug, explosion proof 5-20 20 amp straight blade plug, or explosion proof 6-20 20 amp straight blade plug. Alternatively, we can provide flying leads with no plug for hard wire applications or for operators who prefer to wire in user provided cord caps. Please choose pigtail option below for flying leads with no plug.

This LED light produces 5,400 lumens with a color temperature of 5000K and a color rendering index of 75 which produces colors and details much more accurately than high pressure sodium or mercury vapor luminaries. We also offer a 3000K warm white and 4500K natural white color temperature options (longer lead times may apply for non-standard temperatures).

Adjustable Surface Mount Brackets: Each L-shape bracket is machined with three holes per bracket to attach to the light fixture. The angle of the bracket is set by aligning the machined set screw holes on the mounting bracket with with index holes attached to the fixture. The bracket itself is mounted via two bolt hole at the top the bracket. There are two brackets, one on each end of the light. Once the brackets are mounted to a surface (ceiling, floor or wall), the light fixture can be removed from the brackets by removing the set screws that hold the bracket to the mounting bracket and adjusting the fixture. The fixture can be adjusted at 15° intervals.

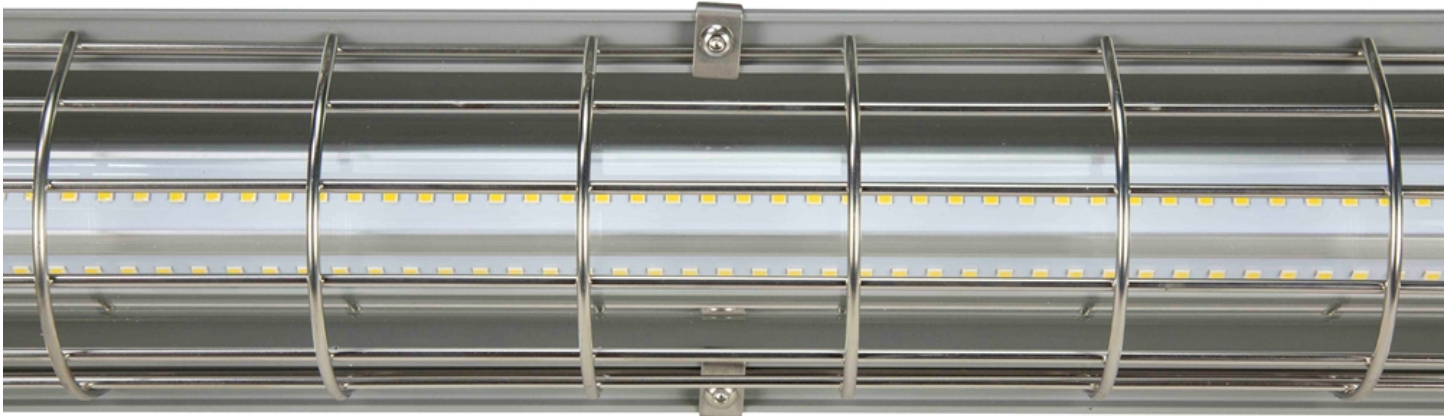
Suggested Applications: Paint spray booths, aircraft maintenance, oil drilling rigs, refineries, solvent and cleaning areas, gas processing plants, chemical manufacturing, waste water treatment plants, gas processing plants, offshore applications, oil tankers, mud tanks, sand mines, mining, cold weather applications.

At Larson Electronics, we do more than meet your lighting needs. We also provide replacement, retrofit, and upgrade parts as well as industrial grade power accessories. Our craftsmen can custom build any lighting system and/or accessories to fit the unique demands of your operation. A commitment to honesty, quality, and dependability has made Larson Electronics a leader in the lighting and electronics business since 1973. Contact us today at 800-369-6671 or message sales@larsonelectronics.com for more information about our custom options tailored to meet your specific industry needs.

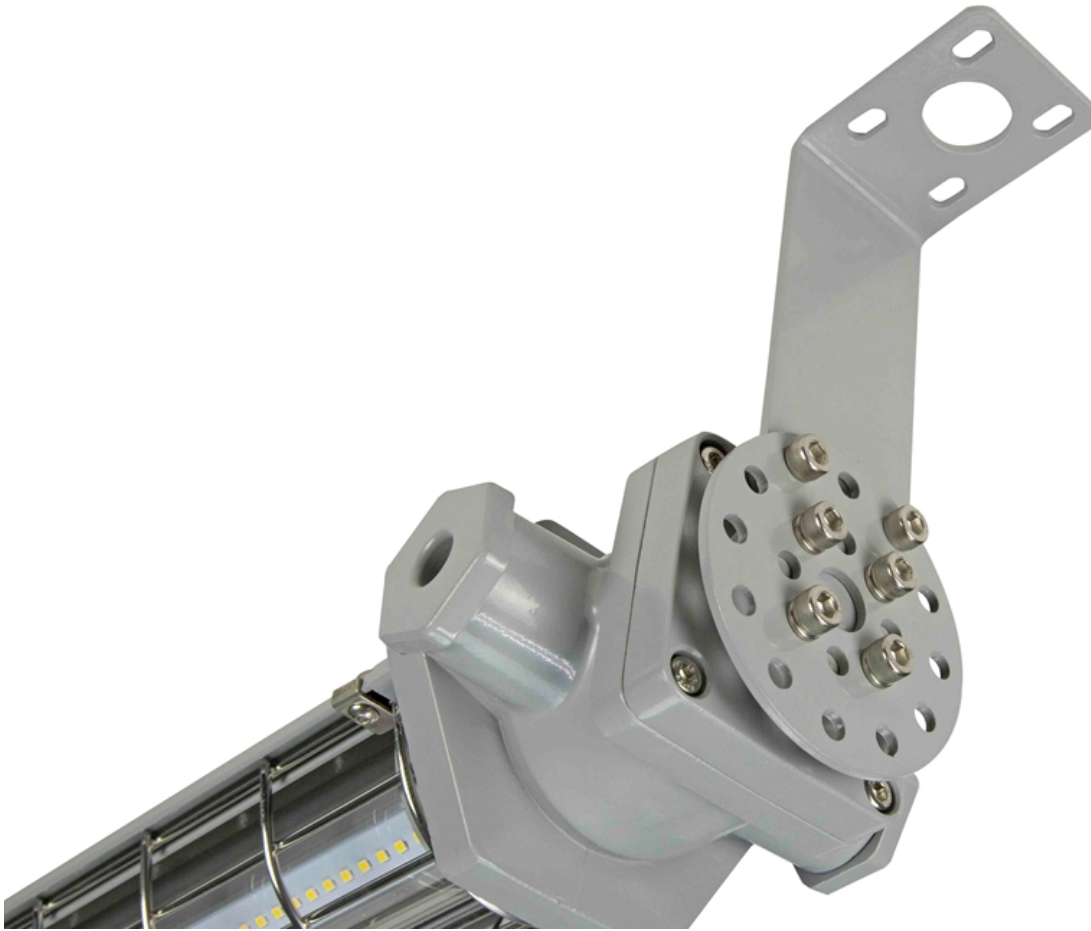


Frequently Asked Questions (FAQ)











Warranty: 60 Months

Options:

EPL-LP-24-LED-50C-EPP-Cord Cap-Voltage-Color Temp

Example: EPL-LP-24-LED-50C-EPP-1523-1227-56K

Cord Cap	
5-15P	-1523
5-20P	-2023.125V
6-20P	-2023.250V

Voltage	
120-277V AC	-1227
12-24V AC/DC	-1224

Color Temp	
5600K	-56K
5000K	-50K
4500K	-45K
4000K	-40K
3500K	-35K
3000K	-30K
2700K	-27K
6500K	-65K

Links (Click on the below items to view):

- [Canadian CEC Certificate \(Commonly referred to as CSA Certificate\)](#)
- [Dimensional Drawing 2D](#)
- [MSDS \(Material Safety Data Sheet\)](#)
- [SpecSheetSpanish](#)
- [USA NEC Certificate \(Commonly referred to as UL Certificate\)](#)
- [Wiring Diagram \(Online\)](#)
- [HigResPic1](#)
- [HigResPic2](#)
- [HigResPic3](#)
- [HigResPic4](#)
- [HigResPic5](#)
- [HigResPic6](#)
- [HigResPic7](#)
- [HigResPic8](#)
- [ISO 9001 Certification](#)
- [Business Certificate](#)