

80W Explosion Proof Low Profile LED Light - Class 1/2 Div 1/2 - 10,800 lms - External Battery Backup

EPL-LP-48-LED-XEMG

Please see last page for supporting documentation for this product(certificates, CAD files & drawings, IES files, wiring diagrams, etc).



EPL-LP-48-LED-XEMG Explosion Proof Low Profile LED

Listing: United States, Canada, Europe, Asia

Lamp Technology: LED

Lamp Dimensions: 53.78"L x 6.89"W x 7.57"H

External Battery Backup Dimensions: 16.38" x 10.69" x 16.38"

Lamp Weight: 22 lbs

External Battery Backup Weight: 80.3 lbs

Voltage: Universal 100-277V AC, 50/60Hz

Total Watts: 80W

Total Lumens: 10,800

Luminous Efficacy: 135 Lm/W

Lamp Life: 60,000+ Hours

Color Temperature: 5000K, 4500K or 3000K

Color Rendering Index: >85 CRI

Lamp Type: -

Lamp Base: -

Replacement Lamp: -

Beam Angle: 100° Horizontal, 140° Vertical

Lighting Configuration: Wide Flood Pattern

Power Efficiency: >95%

Power Factor: 0.992

Emergency Backup Runtime: Up to 90 Minutes

Amperage: 0.67A @ 120V, 0.33 @ 240V, 0.29 @ 277V

Ambient Operating Temp Range: -50°C to +65°C

Operating Temp Rating: T6

Housing Material: Copper Free Cast Aluminum

Housing Finish: Powder Coated

Lens Material: Hardened Borosilicate Glass

Gasket Material: -

Mounting: 3/4" Pendant & Swivel Mount - Both Ship w/ Fixture

Wiring: Terminal Strips

Wiring Hub: 3/4" NPT

Ratings/Approvals

Class I, Division 1, Groups C and D

Class I, Division 2, Groups A, B, C, D

Class II, Divisions 1 & 2 Groups E, F and G

Class III, Divisions 1 & 2

T6 Temperature Rating

NRTL Certified to UL 844 Ed. 13

NRTL Certified to UL 1598

Certified to C22.2 No. 137 Rev 2014

Certified to C22.2 No. 250.0

Paint Spray Booth Approved

Factory Sealed Light Fixture

External Battery Backup

Special Orders- Requirements

Contact us for special requirements

Toll Free: 1-800-369-6671

Intl: 1-214-616-6180

Fax: 1-903-498-3364

E-mail: sales@larsonelectronics.com

The EPL-LP-48-LED-XEMG from Larson Electronics is a Low Profile Explosion Proof Light Fixture that provides operators with a powerful and energy efficient alternative to traditional hazardous location luminaries. LED technology and compact design makes this lamp an excellent replacement

upgrade option for bulky and high maintenance cost older fixtures. This explosion proof LED light has a T6 temperature rating and carries a paint spray booth, and is approved for use in United States and Canada markets. The EPL-LP-48-LED-XEMG is equipped with terminal strips for wiring and an external battery backup feature with a runtime of 90 minutes.

The EPL-LP-48-LED-XEMG from Larson Electronics is an integrated low profile linear explosion proof LED light fixture with a unique design. Instead of using diffused glass, optics, or reflectors to distribute the light, Larson Electronics has positioned the boards within the fixture to provide a wide area light without sacrificing quality or light output. Two offset LED assemblies within the fixture allow this explosion proof linear lamp to provide a brilliant 100° horizontal beam spread and 140° vertical beam spread while achieving a 10,800 lumen output to maintain a small form factor. The LED assembly is protected behind a tempered borosilicate glass tube that is protected by an aluminum wire guard to prevent from accident damage to the light fixture.

This LED light produces 10,800 lumens with a color temperature of 5000K and a color rendering index of 85 which produces colors and details much more accurately than high pressure sodium or mercury vapor luminaries. We also offer a 3000K warm white and 4500K natural white color temperature options (longer lead times may apply for non-standard temperatures). The EPL-LP-48-LED-XEMG is offered with pendant or surface mounting options.

This light is universal voltage capable and can be operated with 100-277V AC, 50/60Hz. This explosion proof LED light fixture is IP67 rated, dust-proof, and protected against high pressure jets and temporary submersion. The cast aluminum body and LED lamp give this light excellent durability and resistance to vibration and impacts. The housing is specially designed to dissipate heat which increases the efficiency and lifespan of the LEDs and electronics.



[Click Photo to Enlarge](#)



[Click Photo to Enlarge](#)



[Click Photo to Enlarge](#)

This Class I Divisions 1 & 2, Class II Divisions 1 & 2 low profile explosion proof light fixture provides 10,800 lumens of high quality light while only drawing 80 watts. The copper free aluminum alloy body is powder coated for added durability and an attractive aesthetic appearance. Special heat dissipating design in conjunction with LED technology helps this fixture to achieve an excellent 60,000 hour rated lifespan with 80% lumen retention at the 60,000 hour mark. Light weight and a low profile make this unit an attractive alternative to larger and heavier older fixtures and requires less hardware to install.

The EPL-LP-48-LED-XEMG features an external battery backup unit that adds emergency light functionality to the fixture. This emergency battery backup will run at full lumen output at the standard UL suggested 90 minutes after power is lost. The light recharges the battery once electrical power is restored. Standard configuration includes a single emergency battery backup that is automatically recharged and kept in a ready state. The battery backup unit includes a switched leg for turning the light fixture on/off without kicking the unit into emergency mode. To maintain the low-profile features of the light, operators can mount the external battery backup unit in a separate location.

LED Benefits: Unlike gas burning and arc type lamps that have glass bulbs, LEDs have no filaments or fragile housings to break during operation and/or transportation. Instead of heating a small filament or using a combination of gases to produce light, light emitting diodes (LEDs) use semi-conductive materials that illuminate when electric current is applied, providing instant illumination with no warm up or cool down time before re-striking. Because there is no warm up period, this light can be cycled on and

off with no reduction in lamp life.

LED lights run at significantly cooler temperatures than traditional metal halide and high pressure sodium lights and contain no harmful gases, vapors, or mercury, making them both safer and more energy efficient. No extra energy is wasted in cooling enclosed work areas due to external heat emissions from bulb type lights, and the operator risks associated with traditional lighting methods, such as accidental burns and exposure to hazardous substances contained in the glass bulbs, are eliminated. In addition, LEDs are also safer for the environment as they are 100% recyclable, which eliminates the need for costly special disposal services required with traditional gas burning and arc type lamps.

Measuring only 6.89" in width, this fixture takes up half the surface area as a standard four foot 2-lamp explosion proof fixture. The surface mount fixture's overall height with adjustable surface mount bracket is 7.57", including the surface mount bracket itself, making the EPL-LP-48-LED-XEMG one of the lowest profile explosion proof light fixtures on the market. When compared to our EPL-48-2L-T6HO fixture, the EPL-LP-48-LED-XEMG fixture produces twice the light output while taking up less than half the surface area. The EPL-LP-48-LED-XEMG is an ideal for applications with little space where low profile fixtures are required.

Wiring: These LED light fixtures are equipped with terminal strips. Electricians bring customer supplied wire to the terminal strips on the fixture for power connection. The wiring of these terminal strip equipped units must be conducted via wiring methods laid out in NFPA 70 / NEC Code Book Article 500. This unit is a factory sealed fixture.

Adjustable Surface Mount Brackets: Each L-shape bracket is machined with three holes per bracket to attach to the light fixture. The angle of the bracket is set by aligning the machined set screw holes on the mounting bracket with with index holes attached to the fixture. The bracket itself is mounted via two bolt hole at the top the bracket. There are two brackets, one on each end of the light. Once the brackets are mounted to a surface (ceiling, floor or wall), the light fixture can be removed from the brackets by removing the set screws that hold the bracket to the mounting bracket and adjusting the fixture. The fixture can be adjusted at 15° intervals.

Suspension Mounting: Pendant mount fixtures hang from the conduit and are suspended by rigid pipe. Each fixture features a 3/4" NPT junction box on one end, and a eyelet other end of the fixture. Operators bring rigid pipe down to the threaded mounting hub. Customer provided wiring is fed down through the rigid pipe to the junction box and tied in to the fixture's terminal strips, completing the electrical connection.

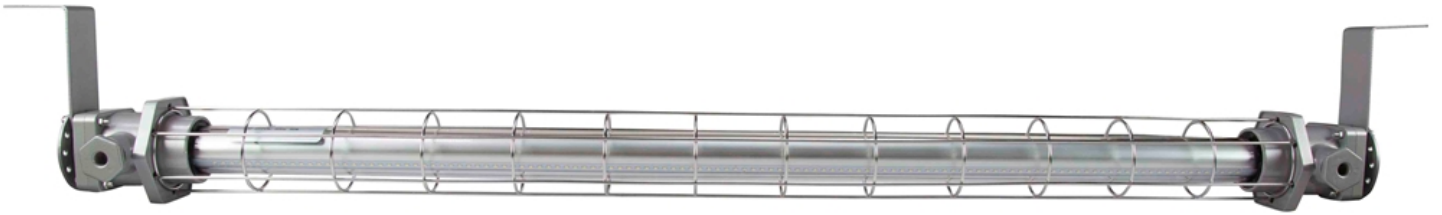
Chain Hang Mounting: Chain hang mount fixtures hang from the chains or metal rope. Two eyelets, one at each end of the fixture, allow operators to attach safety hooks to the fixture during installation. Operators bring flex conduit down to the threaded mounting hub. Customer provided wiring is fed down through the flex conduit to the junction box and tied in to the fixture's terminal strips, completing the electrical connection.

Suggested Applications: Paint spray booths, aircraft maintenance, oil drilling rigs, refineries, solvent and cleaning areas, gas processing plants, chemical manufacturing, waste water treatment plants, gas processing plants, offshore applications, oil tankers, mud tanks, sand mines, mining, cold weather applications.

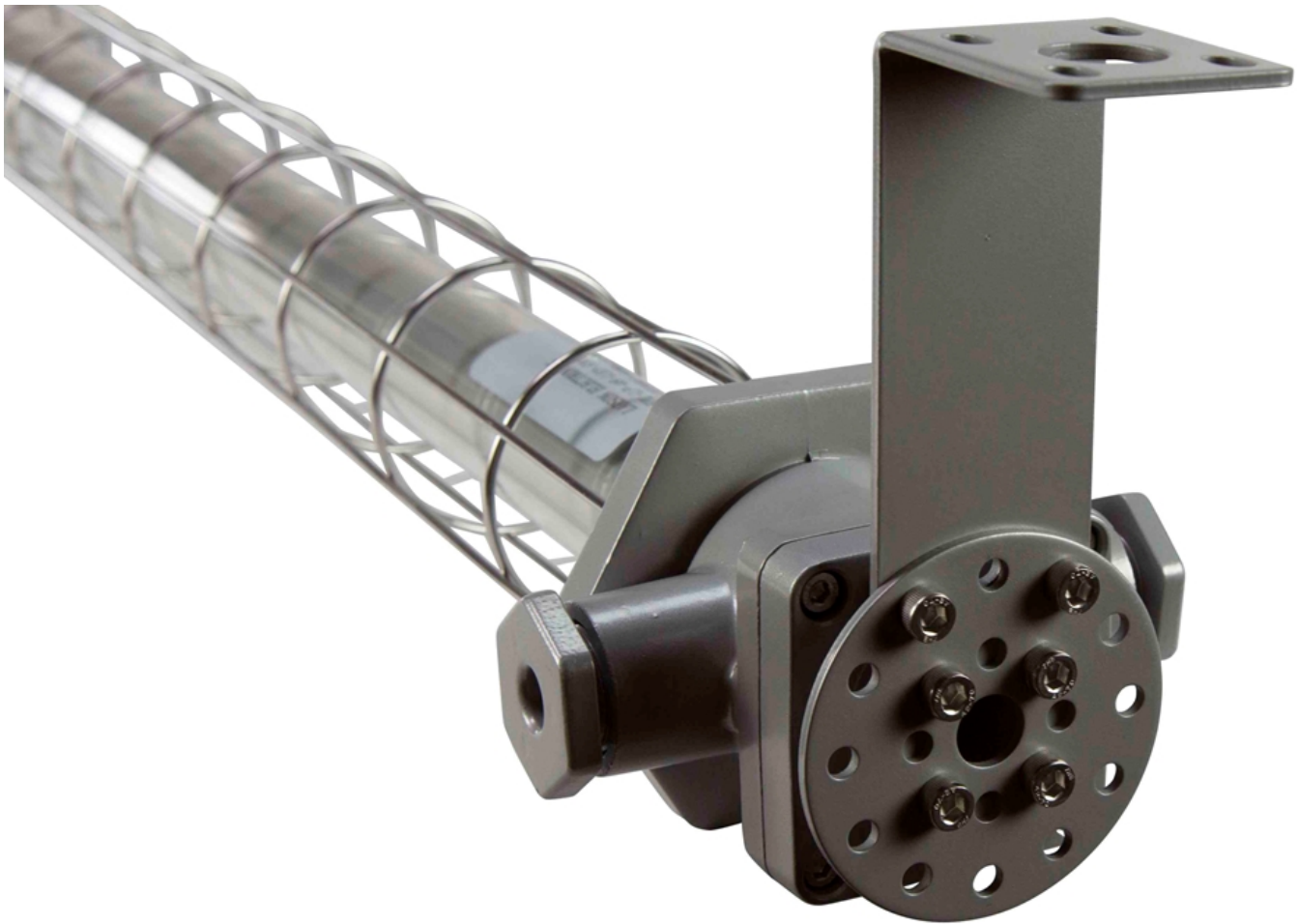
At Larson Electronics, we do more than meet your lighting needs. We also provide replacement, retrofit, and upgrade parts as well as industrial grade power accessories. Our craftsmen can custom build any lighting system and/or accessories to fit the unique demands of your operation. A commitment to honesty, quality, and dependability has made Larson Electronics a leader in the lighting and electronics business since 1973. Contact us today at 800-369-6671 or message sales@larsonelectronics.com for more information about our custom options tailored to meet your specific industry needs.



Frequently Asked Questions (FAQ)









Options:

EPL-LP-48-LED-XEMG-Color Temp-Mount

Example: EPL-LP-48-LED-XEMG-56K-SFC

Color Temp	
5600K	-56K
5000K	-50K
4500K	-45K
4000K	-40K
3500K	-35K
3000K	-30K

Mount	
SURFACE	-SFC
PENDANT	-PND

Links (Click on the below items to view):

- [Canadian CEC Certificate \(Commonly referred to as CSA Certificate\)](#)
- [MSDS \(Material Safety Data Sheet\)](#)
- [USA NEC Certificate \(Commonly referred to as UL Certificate\)](#)
- [HigResPic1](#)
- [HigResPic2](#)
- [HigResPic3](#)
- [HigResPic4](#)
- [HigResPic5](#)
- [Video1](#)
- [ISO 9001 Certification](#)
- [Business Certificate](#)
- [Shipping Time Map](#)