

50' Explosion Proof Tool Tap Reel - C1D1 - Double Gang Explosion Proof Outlet EPLRT2-50-HR

Please see last page for supporting documentation for this product(certificates, CAD files & drawings, IES files, wiring diagrams, etc).



EPLRT2-50-HR Explosion Proof Cord Reel w/ Tool Tap

Standard Features:

16/3 SOOW cable (on all reels)
Spring activated ratchet
4-roller adjustable cable guide and ball
Built to UL 508 table 36.1/NEC Standards
Indoor or Outdoor Use
Rugged fabricated steel and cast aluminum slip ring enclosure
Gray epoxy finish on all steel parts
6' feeder cord on fixed end
Two 15 Amp or 20 Amp C1D1 outlets

This fixture is being remanufactured with cord reel under file number E193373.

Safety Rating

Class I Division 1, Groups C&D
Class II Division 1, Groups E,F, & G
Class III Division 1
Class 1 Zone 1: AEx d IIB, EX d IIB
Conforms to NEMA 9 and NEMA 4 (IP56)

Special Orders- Requirements

Contact us for special requirements

Phone: 1-214-616-6180

Toll Free: 1-800-369-6671

Fax: 1-903-498-3364

E-mail: sales@magnalight.com

Made in the USA

The EPLRT2-50-HR Explosion Proof Cord Reel w/ Double Gang Tool Tap provides easy management of an included 50 feet of SOOW cord, giving operators in hazardous locations the ability to easily extend the working reach of their tools and lighting equipment. This cord reel with tool tap is ideal for petroleum facilities, waste water treatment plants, grain storage and handling silos, paint booths, underground mines, chemical plants, and much more.

*****PLEASE NOTE: ANY FREE SHIPPING OFFERS DO NOT APPLY TO THIS HAZARDOUS LOCATION LIGHT FIXTURE*****

This explosion proof tool tap is rated for Class 1 Division 1 and Class 2 Division 2 environments and includes the reel, 50 feet of 16/3 AWG SOOW cord, and a double gang Class 1 Division 1 twist lock receptacle. For proper protection and to maintain HAZLOC approval, a matching twist lock plug should be used with this unit's power receptacle. This unit is of a modular design and is suitable for indoor or outdoor applications.

The unit includes 50 feet of SOOW Cord with a 14" flange diameter and is ready to install a portable explosion proof fixture to the end. These reels are built with modular components, coupled with a spark proof ratchet and hazardous location slip ring housing. The cord feeds onto the steel reel assembly through a 4 roller adjustable cable guide with a ball stop. This reel includes an integral spring actuated ratcheting mechanism for positive cord management housed within the explosion proof threaded slip ring enclosure. This cord reel is assembled to UL 508 table 36.1 / NEC Standards and conforms to NEMA 9 and NEMA 4 (IP56)

standards as well.

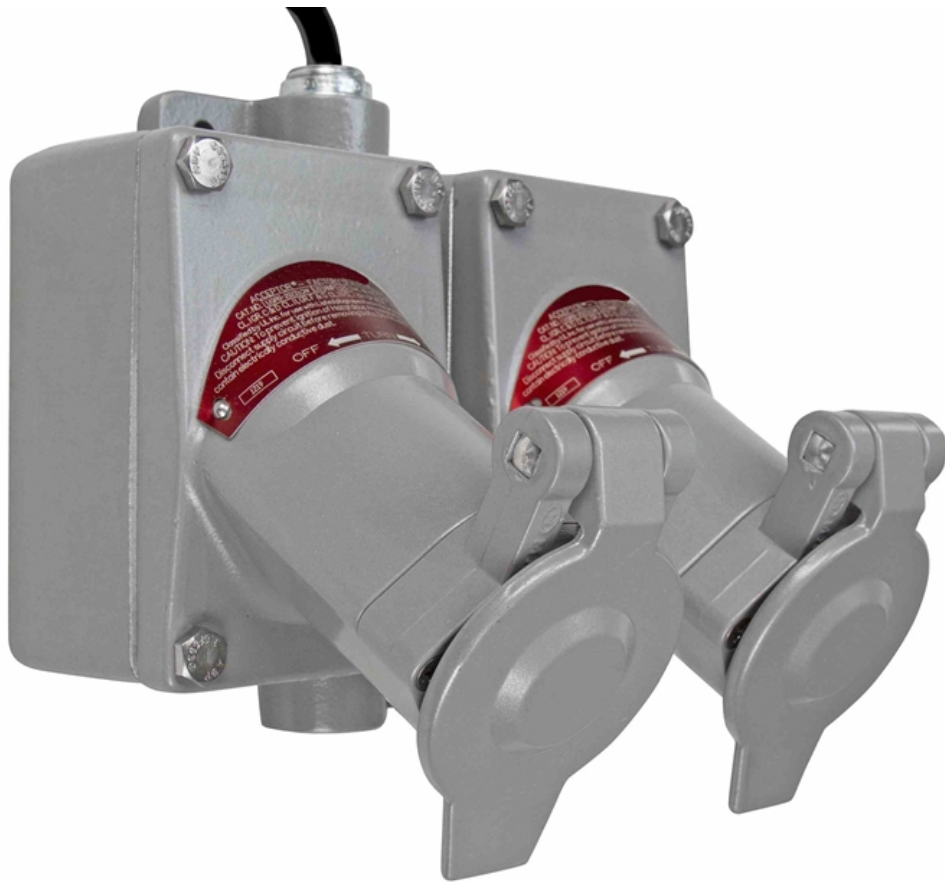
This explosion proof tool tap is ideal for use with drop lights and tools in locations where connection to fixed receptacles is unavailable or impractical, and safely extends the operational range without creating the hazards associated with excessive cord lengths strewn about the workplace. Larson Electronics offers a wide variety of lighting solutions to accommodate this reel. For more information on these lights, please contact us at 1-800-367-6671.

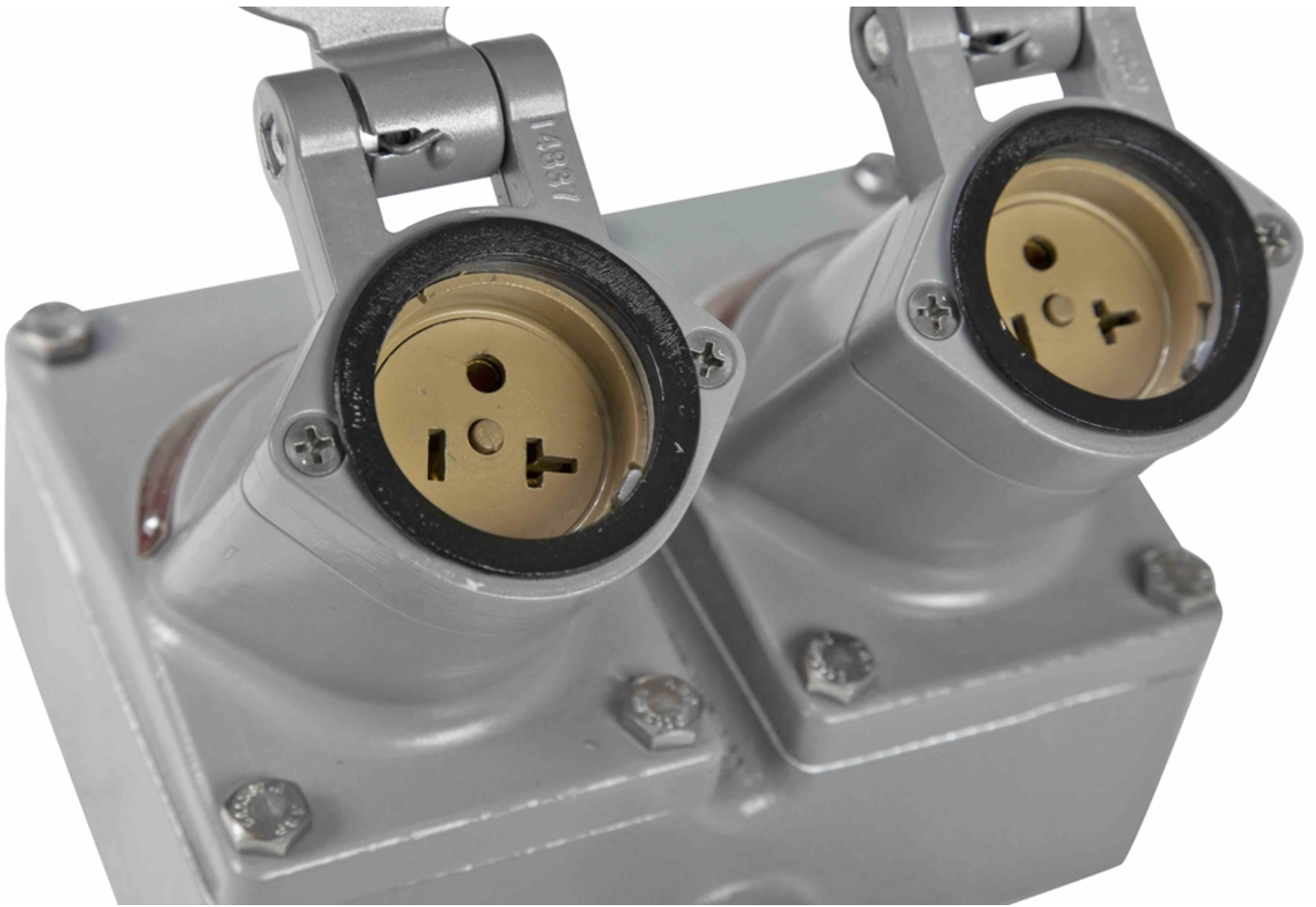
Features

Built to UL 508 table 36.1 / NEC Standards
Indoor or outdoor use
50,000 hour LED Lamp
Rugged fabricated steel and cast aluminum construction
Threaded slip ring enclosure
Gray epoxy finish on steel parts
Double Gang 15 Amp or 20 Amp outlet



Frequently Asked Questions (FAQ)





Options:

EPLRT2-50-HR-Outlet

Example: EPLRT2-50-HR-125V

Outlet	
125V	-125V
250V	-250V

Links (Click on the below items to view):

- [Dimensional Drawing 2D](#)
- [Operations Manual](#)
- [STEP File \(3D CAD Model\)](#)
- [Wiring Diagram \(Online\)](#)
- [HigResPic1](#)
- [HigResPic2](#)
- [HigResPic3](#)
- [ISO 9001 Certification](#)
- [Business Certificate](#)