

## 100A Explosion Proof Receptacle w/ Interlocked Circuit Breaker - Class I, II, III - 3W4P - 600V AC/250V DC Rated

### EPO-100A-3W4P-CB.LS

Please see last page for supporting documentation for this product(certificates, CAD files & drawings, IES files, wiring diagrams, etc).



#### EPO-100A-3W4P-CB.LS Explosion Proof Receptacle

Unit Type: Explosion Proof Receptacle w/ Interlocked Circuit Breaker

Dimensions: 16.83" x 9.06" x 13.95"

Weight: -

Voltage Rating: 600V AC/250V DC

Amp Rating: 100A

Configuration: 3-wire, 4-pole

Circuit Breaker: 480V AC - Thermal Magnetic Breaker

Protection: Short Circuit, Thermal Time Delay Overload

Operating Temperature Rating: -

Materials: Copper-free Aluminum, Stainless Steel (Bolts, Pins)

Finish: Gray Epoxy Coated

Mount: Wall or Surface - (4) Mounting Brackets w/ Keyhole Slots

Hubs: (3) 1.5" Taper Tapped, (2) 3/4" Threaded

#### Ratings

Class I, Groups B,C,D

Class II, Group G + Coal Dust

Class III

Type 3, 3R, 4, 4X, 7 (C, D), 9 (G), 12

#### Special Orders- Requirements

Contact us for special requirements

Toll Free: 1-800-369-6671

Intl: 1-214-616-6180

Fax: 1-903-498-3364

E-mail: [sales@larsonelectronics.com](mailto:sales@larsonelectronics.com)

**The Larson Electronics EPO-100A-3W4P-CB.LS Explosion Proof Receptacle w/ Interlocked Circuit Breaker facilitates power connections in Class I, II and III rated facilities. This 100-amp unit offers short circuit and thermal time delay overload protection. Equipped with a 600V AC/250V DC rating, the NEMA rated explosion proof receptacle is constructed of copper-free aluminum.**

The EPO-100A-3W4P-CB.LS is an explosion proof receptacle for electrical connections in combustible work sites. This power accessory is rated at 600V AC/250V DC and 100 amps. Equipped with a thermal magnetic 480V AC interlocked circuit breaker, the explosion proof device contains a 3-wire 4-pole configuration. This unit offers short circuit and thermal time delay overload protection. When the circuit breaker is in an "ON" state, the plug is mechanically locked in the receptacle. The trip-free breaker operating handle can be padlocked (in both on and off positions) to prevent tampering.

The explosion proof receptacle is constructed of copper-free aluminum with a gray epoxy coated finish. Bolts and pins are made out of stainless steel. This NEMA-rated explosion proof device is suitable for use in Class I, II and III work sites.

**Hubs:** The EPO-100A-3W4P-CB.LS contains three, 1 1/2" taper tapped conduit hubs at the top (1) and bottom (2). Two, 3/4" threaded openings at the top and bottom of the unit are also available for optional drain and breathers.

**Mounting:** The EPO-100A-3W4P-CB.LS can be mounted to walls or flat surfaces using four mounting brackets with keyhole slots.

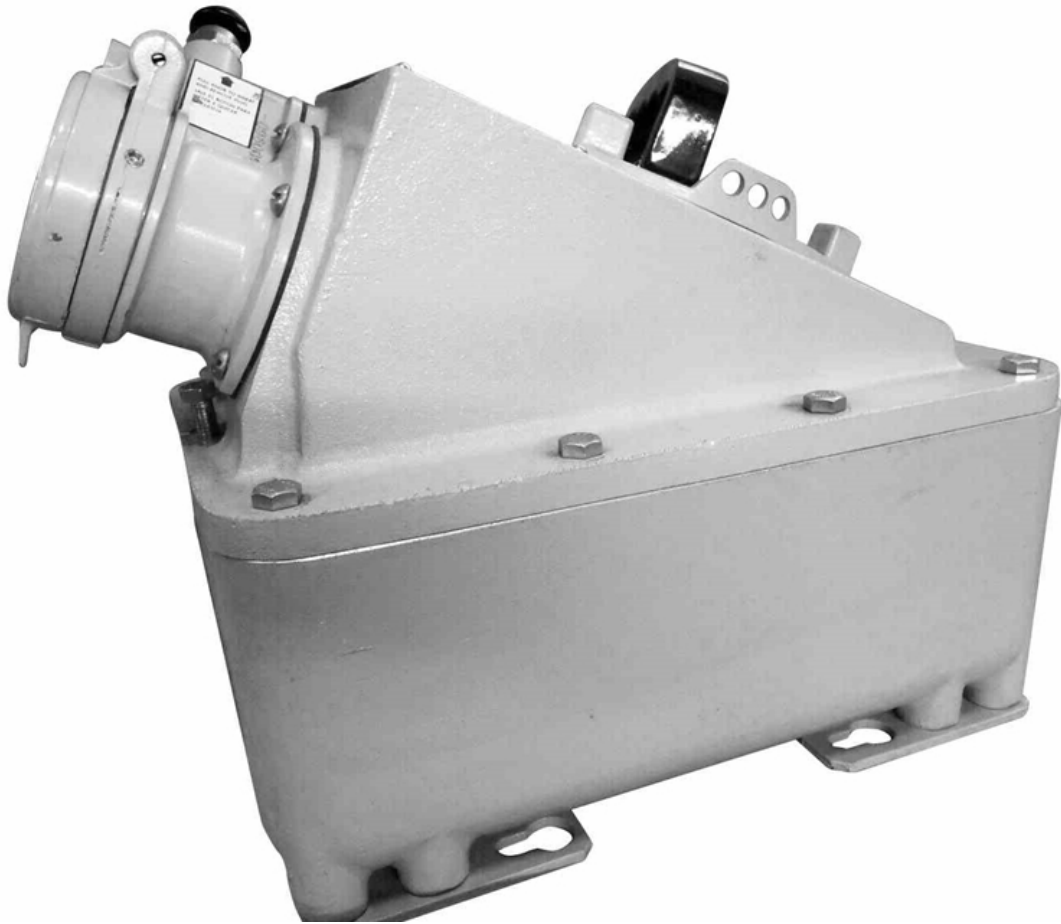
At Larson Electronics, we do more than meet your lighting needs. We also provide replacement, retrofit, and upgrade parts as well as industrial grade power accessories. Our craftsmen can custom build any lighting system and/or accessories to fit the unique demands of your operation. A commitment to honesty, quality, and dependability has made Larson Electronics a leader in the lighting and electronics business since 1973. Contact us today at 800-369-6671 or message [sales@larsonelectronics.com](mailto:sales@larsonelectronics.com) for more information about our custom options tailored to meet your specific industry needs.

---



---

## Frequently Asked Questions (FAQ)



Links (Click on the below items to view):

- [HigResPic1](#)
- [HigResPic2](#)
- [ISO 9001 Certification](#)
- [Business Certificate](#)