

150A Explosion Proof Receptacle w/ Interlocked CB - Class I, II, III - 3W4P, 600V AC - Type FD Breaker - (2) Hubs
EPO-150A-3W4P-CB.LS

Please see last page for supporting documentation for this product(certificates, CAD files & drawings, IES files, wiring diagrams, etc).



EPO-150A-3W4P-CB.LS Explosion Proof Receptacle w/ Circuit Breaker

Listing: NRTL Listed for United States and Canada

Dimensions: 16.83" x 9.06" x 13.95"

Weight: -

Voltage Rating: 600V AC/250V DC (Maximum)

Amp Rating: 150A

Configuration: 3-wire, 4-pole

Circuit Breaker Type: Type FD - 600V AC Rated

Protection: Short Circuit, Thermal Time Delay Overload

Operating Temperature Rating: -

Materials: Copper-free Aluminum

Finish: Epoxy Powder Coating

Mount: Wall or Surface - (4) Mounting Brackets w/ Keyhole Slots

Grounding: Style 2 Grounding

Hubs: (2) 1.5" Threaded Conduit Openings @ Top and Bottom

Ratings

Class I, Divisions 1&2, Groups C,D

Class II, Divisions 1&2, Groups F,G

Class III

NEMA 3, 3R, 7 (C,D), 9, (F,G)

NEMA 4/4X Retained Only if Using NEMA 4/4X Plug

Special Orders- Requirements

Contact us for special requirements

Toll Free: 1-800-369-6671

Intl: 1-214-616-6180

Fax: 1-903-498-3364

E-mail: sales@larsonelectronics.com

The Larson Electronics EPO-150A-3W4P-CB.LS Explosion Proof Receptacle w/ Interlocked Circuit Breaker facilitates power connections in Class I, II and III rated facilities. This 150-amp unit offers short circuit and thermal time delay overload protection. Equipped with a 600V AC/250V DC rating, the NEMA rated explosion proof receptacle is constructed of copper-free aluminum. This explosion proof device has two 1/2" threaded conduit openings at the top and bottom of the unit.

The EPO-150A-3W4P-CB.LS is an explosion proof receptacle for electrical connections in combustible work sites. This power accessory is rated at 600V AC/250V DC and 150 amps. Equipped with a 600V AC rated type FD circuit breaker, the explosion proof device contains a 3-wire 4-pole configuration. This unit offers short circuit and thermal time delay overload protection. When the circuit breaker is in an "ON" state, the plug is mechanically locked in the receptacle. This receptacle is equipped with style 2 grounding (shell and pole). The explosion proof receptacle is constructed of copper-free aluminum with an epoxy powder coated finish. This NEMA-rated explosion proof device is suitable for use in Class I, II and III work sites (no Group B). NEMA 4 and 4X ratings are retained only if using a NEMA 4 and 4X plug.

Hubs: The EPO-150A-3W4P-CB.LS contains two, 1 1/2" threaded conduit

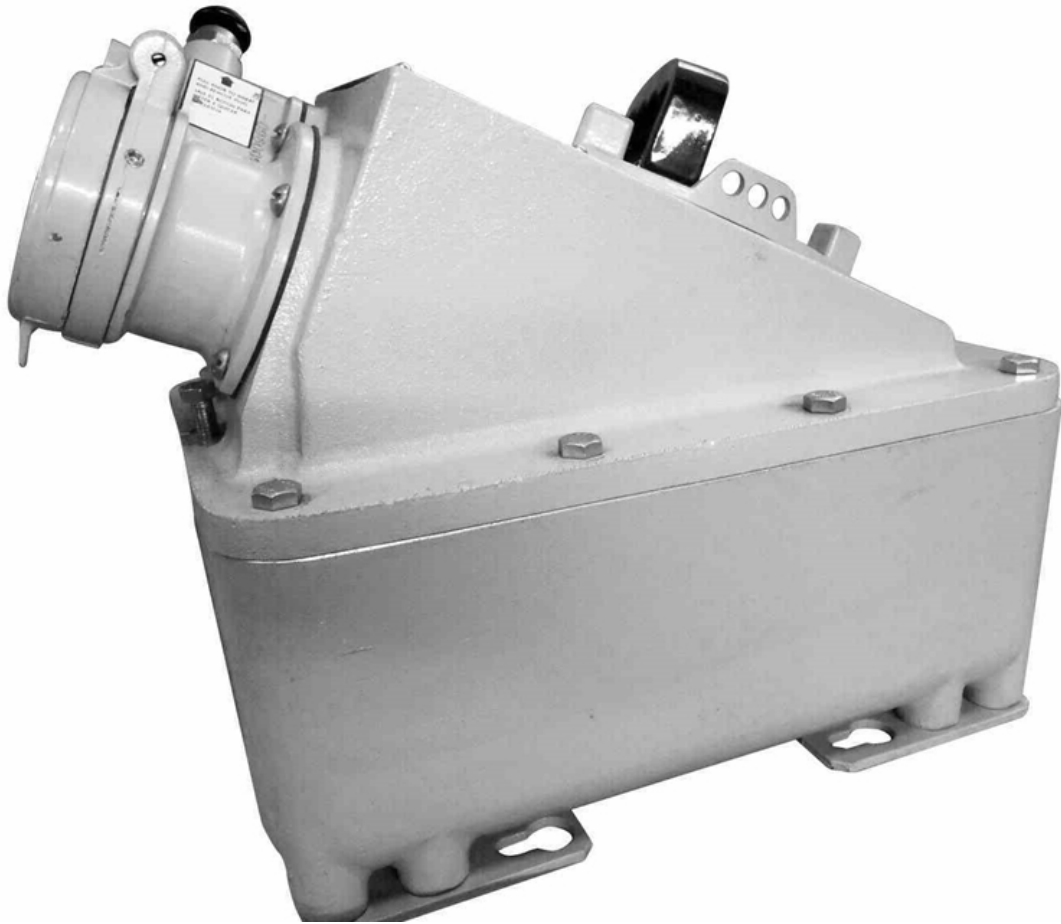
openings at the top and bottom.

Mounting: The EPO-150A-3W4P-CB.LS can be mounted to walls or flat surfaces using four mounting brackets with keyhole slots.

At Larson Electronics, we do more than meet your lighting needs. We also provide replacement, retrofit, and upgrade parts as well as industrial grade power accessories. Our craftsmen can custom build any lighting system and/or accessories to fit the unique demands of your operation. A commitment to honesty, quality, and dependability has made Larson Electronics a leader in the lighting and electronics business since 1973. Contact us today at 800-369-6671 or message sales@larsonelectronics.com for more information about our custom options tailored to meet your specific industry needs.



Frequently Asked Questions (FAQ)



Links (Click on the below items to view):

- [HigResPic1](#)
- [HigResPic2](#)
- [ISO 9001 Certification](#)
- [Business Certificate](#)