

Double Gang Outlet Box Instruction Manual

Do not attempt operation until you are familiar with all warnings, precautions, and procedures outlined within this instruction sheet. Read carefully before operating. Retain these instructions for future reference.

WARNING:

USER SHOULD BE TRAINED IN THE PROPER USE AND MAINTENANCE OF THIS DEVICE. WHEN EXTENSION CORD IS CONNECTED TO A POWER SOURCE IN HAZARDOUS AREA, PLUG AND MATCHING RECEPTACLE MUST BE SUITABLE FOR HAZARDOUS LOCATION INVOLVED. IMPROPER USE OF THIS DEVICE, ASSOCIATED PLUG, RECEPTACLE, AND CORD CAN LEAD TO SERIOUS INJURIES OR DEATH TO PERSONNEL.

PERIODIC INSPECTION OF THE RECEPTACLE AND CORD IS NECESSARY.

THE CORD MUST BE ROUTINELY CHECKED FOR CUTS, BREAKS, OR ANY SEVERE ABRASIONS, AND IF ANY ARE FOUND, THE CORD MUST BE REPLACED BEFORE RESUMING USE OF THE UNIT.

ELECTRICAL POWER SUPPLY MUST BE "OFF" BEFORE AND DURING INSTALLATION AND MAINTENANCE. INSTALLATION AND MAINTENANCE PROCEDURE MUST BE PERFORMED BY A TRAINED AND COMPETENT ELECTRICIAN.

IF ANY PARTS OF THE RECEPTACLE OR PLUG APPEAR TO BE MISSING, BROKEN, OR SHOW SIGNS OR DAMAGE, DISCONTINUE USE IMMEDIATELY. REPLACE WITH THE PROPER REPLACEMENT PART(S) BEFORE CONTINUING SERVICE.

INSTALLATION

ELECTRICAL WARNING

Electrical power supply must be "OFF" before and during installation and maintenance. Failure to do so may result in serious or fatal injuries due to electrocution.

Mount the EPO-2G-2X20A-10-BCE on a flat, sturdy surface capable of supporting the outlet assembly via the two mounting tabs at the back of the device box. Be sure to consider the cord placement when mounting.

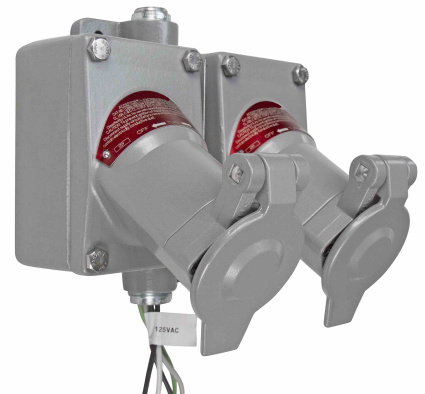
Once the device is mounted in the desired location, trim back the wiring 1/2" to expose leads for making wiring connections. Complete connections in accordance with all applicable national and local electrical codes. Utilize a junction box or similar device and take precautionary steps for weatherproofing all connections if installed in a location where water may come in contact with the unit. Ensure the unit is properly grounded and that wiring is done according to all local and national electrical/building codes.

If wiring connections are made inside the hazardous area, be sure all explosion proofing measures are taken to maintain the explosion proof status of the device. This unit's receptacles are designed to safely contain any arcs between the internal contacts that may be created within the receptacle housing.

RECEPTACLE OPERATION

The receptacles are dead-front construction. Electrical connection between it and plug is accomplished after plug fully inserts into receptacle and rotated clockwise.

1. Lift receptacle door and locate polarization on mating plug pin and receptacle face. Insert plug straight all the way into receptacle until it cannot go further.
2. Rotate plug clockwise limit (37°), this closes internal contacts and completes circuit. This also mechanically locks plug into receptacle so it cannot be pulled out.
3. To remove plug, push plug inward and turn to counterclockwise, pull plug straight out.



MAINTENANCE:

Electrical and mechanical inspection of all components must be performed on a regularly scheduled basis, determined by the environment and frequency of use. It is recommended that inspection be performed a minimum of once a year.

WARNING: ELECTRICAL POWER SUPPLY MUST BE “OFF” BEFORE AND DURING INSTALLATION AND MAINTENANCE. INSTALLATION AND MAINTENANCE PROCEDURE MUST BE PERFORMED BY A TRAINED AND COMPETENT ELECTRICIAN.

WARNING: IF ANY PARTS OF THE RECEPTACLE OR PLUG APPEAR TO BE MISSING, BROKEN, OR SHOW SIGNS OR DAMAGE, DISCONTINUE USE IMMEDIATELY. REPLACE WITH THE PROPER REPLACEMENT PART(S) BEFORE CONTINUING SERVICE.

During the inspections, perform the following steps:

1. Inspect all contact wire terminals for tightness and re-torque if necessary. NOTE: Discoloration due to excessive heat is an indicator of potential issues and should be thoroughly investigated and repaired as necessary.
2. Explosion Proof Plugs: Check grounding and bonding for correct installation. Secure connections and retorque if necessary.
3. Check gaskets for deterioration and replace if necessary.
4. Clean exterior surfaces to ensure the nameplates remain legible.
5. Inspect cable grip tightness to ensure proper cord/cable gripping.
6. Torque all screws as described in the “Installation” section before reusing the device.
7. Inspect all parts and replace those which are broken or excessively worn.
8. Check the contacts for signs of excessive arcing or burning and replace if necessary.

USE AND CARE

Unauthorized modification may impair the function and/or safety of the Outlet Box and could affect the life of the equipment. Always check damaged or worn out parts before using the unit. When Outlet Box is not in use, store it in a secure place. Inspect for good working condition prior to storage and before re-use.

Should further information not covered by these instructions be required, please contact Larson Electronics at 1.877-348-9680 or sales@larsonelectronics.com for further assistance.

Please visit LarsonElectronics.com for **Warranty** and **Return** information.