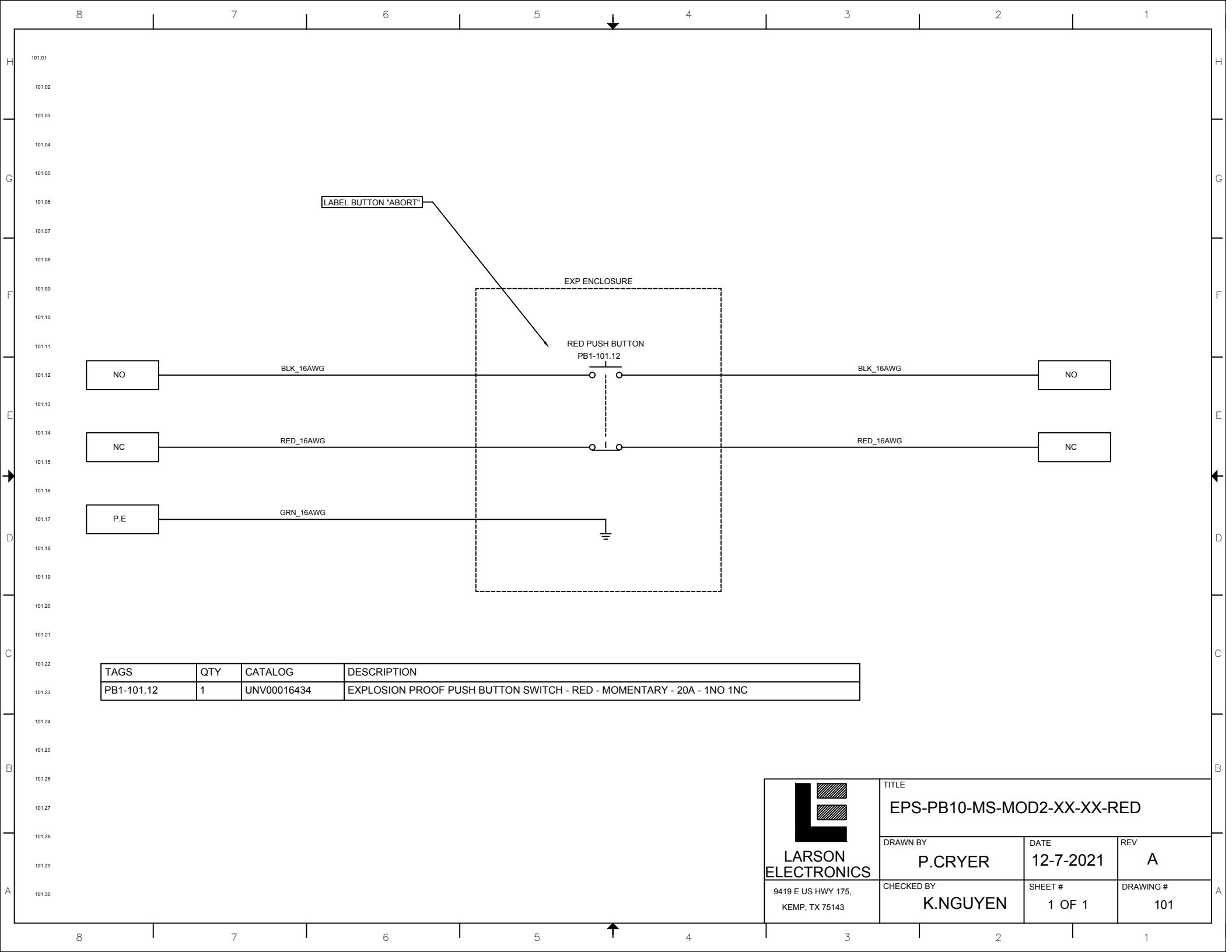


REV	DESCRIPTION	DATE
A	PRODUCTION RELEASE	12-7-2021

EPS-PB10-MS-MOD2-XX-XX-RED





LABEL BUTTON "ABORT"

EXP ENCLOSURE

RED PUSH BUTTON  
PB1-101.12

BLK\_16AWG

BLK\_16AWG

RED\_16AWG

RED\_16AWG

GRN\_16AWG

NO


NO

NC

NC

P.E

TAGS	QTY	CATALOG	DESCRIPTION
PB1-101.12	1	UNV00016434	EXPLOSION PROOF PUSH BUTTON SWITCH - RED - MOMENTARY - 20A - 1NO 1NC

 <b>LARSON ELECTRONICS</b> 9419 E US HWY 175, KEMP, TX 75143	TITLE <b>EPS-PB10-MS-MOD2-XX-XX-RED</b>		
	DRAWN BY <b>P.CRYER</b>	DATE <b>12-7-2021</b>	REV <b>A</b>
	CHECKED BY <b>K.NGUYEN</b>	SHEET # <b>1 OF 1</b>	DRAWING # <b>101</b>