

16A Explosion Proof Manual Starter Switch - Class I, II, III - 600V Rated - Thermal Overload Protect

EPS-TPS-16A

Please see last page for supporting documentation for this product(certificates, CAD files & drawings, IES files, wiring diagrams, etc).

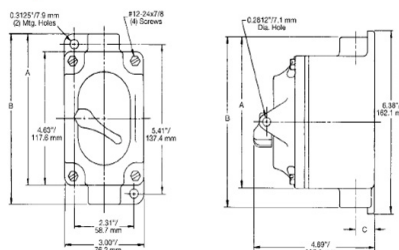


The EPS-TPS-16A from Larson Electronics is an Explosion Proof Manual Starter Switch that is suitable for Class I, II and III flammable environments. Equipped Class 10 thermal overload protection, this 16-amp unit is rated at 600V AC. The explosion proof switch is constructed of malleable Aluminum and is offered in feed-through or dead-end configurations, with 1/2" NPT or 3/4" NPT hubs.

The EPS-TPS-16A is an explosion proof switch designed for applications in combustible work environments. Capable of handling loads up to 16 amps, this 2-pole unit is rated at 600V AC. Thermal overload protection is provided by a Class 10 Ambient-Compensated Thermal Overload Relay. This feature enables temporary overload at startup, with a Class 10 rating providing up to 10 seconds of overload condition before tripping the circuit. Ambient compensation reduces the possibility of false tripping, by taking the ambient temperature into consideration.



[Click Photo to Enlarge](#)



[Click Photo to Enlarge](#)

The EPS-TPS-16A explosion proof switch cover and housing box is constructed of malleable aluminum with all arcing devices contained within an explosion proof labyrinth switch for the highest protection possible. The entire unit is triple coated with zinc electroplate, chromate, and a final epoxy powder coat for maximum durability and corrosion resistance. A bushing seal at each conductor opening prevents damage to wiring insulation and a triple coat housing finish provides rugged protection against corrosion.

Hubs: This explosion proof unit is offered with 1/2" NPT or 3/4" NPT hubs. NPT tapped conduit openings are provided on the top and bottom of the unit in feed through versions, while dead end versions have a single conduit hub, providing easy and secure connection to main power line supplies. Each hub opening is fitted with an integral bushing to prevent fraying or damage to insulation.

Mounting: Two external mounting lugs provide simple and secure mounting of the unit to walls and flat surfaces. The unit box, switch and face plate are all included with the product.

Suggested Applications: Manufacturing, Industrial, Warehouse, Lighting, Lighting, Wet areas or Locations Where Combustible Dust is Present.

At Larson Electronics, we do more than meet your lighting needs. We also provide replacement, retrofit, and upgrade parts as well as industrial grade power accessories. Our craftsmen can custom build any lighting system and/or accessories to fit the unique demands of your operation. A commitment to honesty, quality, and dependability has made Larson Electronics a leader in the lighting and electronics business since 1973. Contact us today at 800-369-6671 or message sales@larsonelectronics.com for more information about our custom options tailored to meet your specific industry needs.

Specifications / Additional Information

EPS-TPS-16A Explosion Proof Manual Switch

Listing: United States, Canada

Unit Dimensions: 3.00"-W X 4.69"-D X 6.13 "-L

Weight: -

Voltage Rating: 600V AC, 1PH

Amps: 16A

Poles: 2P

HP: 1HP @ 230V AC, 1HP @ 120V AC; 3/4 HP @ 115V DC, 3/4 HP @ 230V DC

Operation: Toggle

Protection: Class 10 Ambient-Compensated Thermal Overload Relay

Insulation: Integral Bushings in Conductor Openings

Unit Materials: Box/Receptacle- Malleable Aluminum, Sealing Chamber- Aluminum

Finish: Triple-coat—Zinc Electroplate, Chromate, Epoxy Powder Coat

Mounting: External Mounting Lugs on Body

Grounding: Single Internal Housing Ground Screw

Configuration: Feed Through or Dead End

Hub Size Options: 1/2" NPT or 3/4" NPT

Scroll Down to Purchase-

Ratings

Class I, Division 1&2 Groups C,D

Class II, Division 1&2 Groups E,F,G

Class III

NEMA 7 (C,D) 9 (E,F,G)

Special Orders- Requirements

Contact us for special requirements

Toll Free: 1-800-369-6671

Intl: +01-903-498-3364

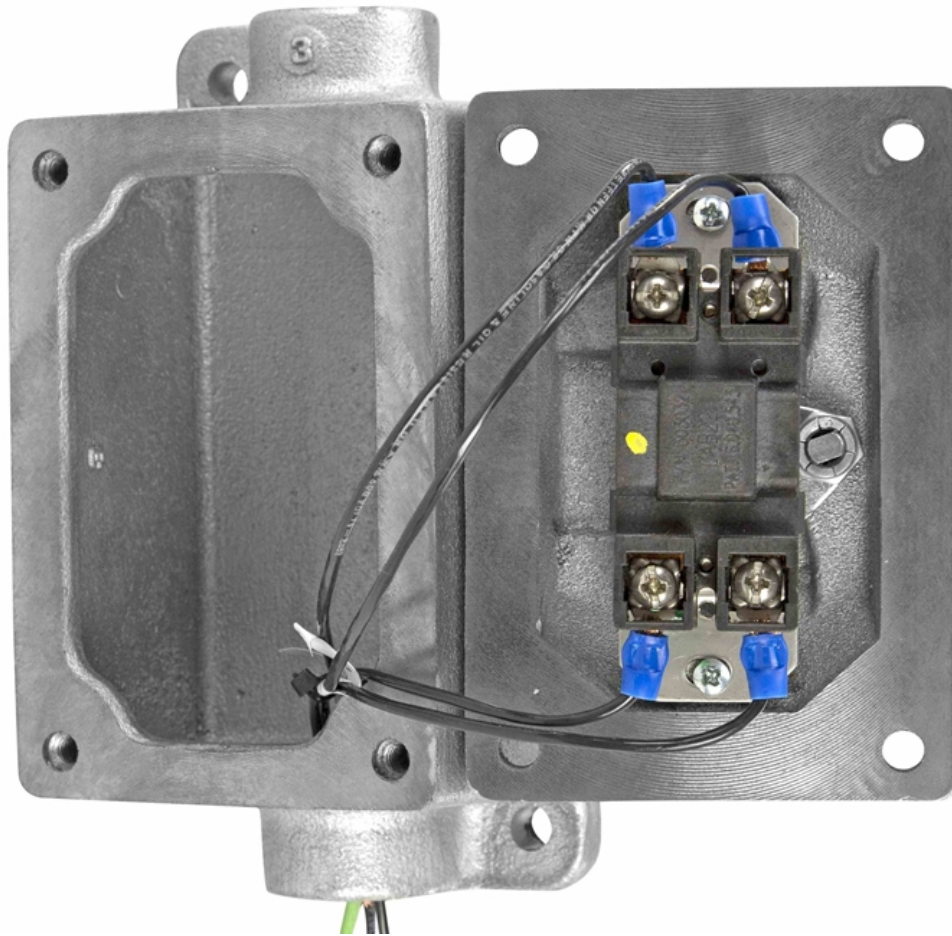
Fax: 1-903-498-3364

E-mail: sales@larsonelectronics.com

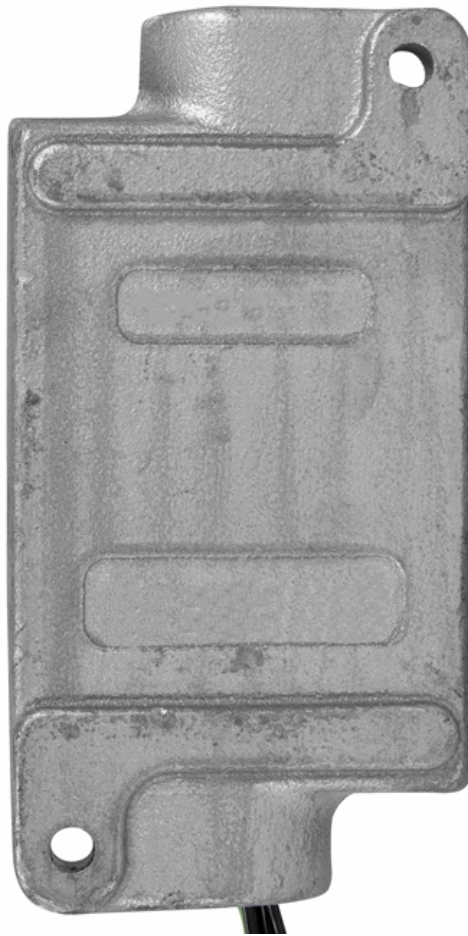


Frequently Asked Questions (FAQ)









Options:

EPS-TPS-16A-Configuration-Hub Size

Example: EPS-TPS-16A-FT-0.75IN

Configuration	
FEED THROUGH	-FT
DEAD END	-DE

Hub Size	
3/4	-0.75IN
1/2	-0.5IN

Links (Click on the below items to view):

- [HigResPic1](#)
- [HigResPic2](#)
- [HigResPic3](#)
- [HigResPic4](#)
- [HigResPic5](#)
- [HigResPic6](#)
- [HigResPic7](#)
- [HigResPic8](#)
- [HigResPic9](#)
- [HigResPic10](#)
- [ISO 9001 Certification](#)
- [Business Certificate](#)
- [Shipping Time Map](#)