

400W Explosion Proof Combination Day/Night Motion Sensor - 10' to 20' Mounting Height - 15' x 15' Area Coverage - Timer

EXP-DNMS-N4X-AT-HV

Please see last page for supporting documentation for this product(certificates, CAD files & drawings, IES files, wiring diagrams, etc).



EXP-DNMS-N4X-AT-HV Explosion Proof Adjustable Combination Sensor

Listing: NRTL Listed for United States, Canada and International

Dimensions: 7"-W x 5"-H x 9"-D

Weight: -

Detection: Day/Night, Motion or Combination of Day/Night + Motion

Detection Coverage: 15' x 15' (Mounted @ 16')

Tilt Angles: -90° to +30° - Elevation

Reach: 6.5' to 32' - Adjustable

System Voltage: 120V, 208V, 220V, or 277V AC

Maximum Wattage: 400W

Output Hold Time: 0.5 Secs to 15 Mins (Adjustable)

Mains Frequency: 50/60 Hz

Ambient Temperature Range: -22°F to +140°F

Radiated Frequency: 5.8 GHz

Operation: Normally Opened or Normally Closed

Materials: Copper-free Aluminum, Glass

Mount: Wall Bracket

Wiring: Flying Leads

Hub Size: 1/2" or 3/4" NPT

Ratings

Listed for United States & Canada

Class I, Divisions 1 & 2, Groups B, C, D

Class I, Zones 1 & 2, Groups IIB+H2, IIA

Class II, Divisions 1 & 2, Groups E, F, G

Class III, Divisions 1 & 2

NEMA 3R, 4, 7 (B, C, D), 9 (E, F, G)

NRTL Listed to UL 508A

NRTL Listed to UL 1203

NRTL Listed to CSA C22.2 No 14, 25, 30

Special Orders- Requirements

Contact us for special requirements

Toll Free: 1-800-369-6671

Intl: 1-214-616-6180

Fax: 1-903-498-3364

E-mail: sales@larsonelectronics.com

The Larson Electronics EXP-DNMS-N4X-AT-HV Explosion Proof Combination Day/Night Motion Sensor is approved for Class I, Divisions 1 & 2 and Class II, Divisions 1 & 2 rated locations. This non-sparking combination sensor features the following settings: day/night, motion detection and a combination of both types. The EXP-DNMS-N4X-AT-HV can handle a maximum load of 400 watts.

This explosion proof combination day/night + motion sensor is ideal for operators seeking a high quality explosion proof sensor rated for use in hazardous areas. Settings for dusk to dawn sensing, motion and a combination of both are available on the device. The 400-watt unit is constructed of copper free non-sparking aluminum with a glass window.

This unit leverages cutting-edge microwave sensors to detect motion. When in use, the device sends out discreet waves that are reflected back from nearby walls and objects (not heat or light). Microwave sensors are not affected by line of sight, resulting in wider and more accurate coverage of the target area. By

comparison, traditional infrared sensors can only detect heat and light (factors used to identify movement) within the unit's field of view. Microwave sensors also provide stable performance in unpredictable climates and can penetrate glass, plastic and other non-metallic objects.

EXP-MS-N4X-AT in operation. [Click Here](#) to view our Flex Couplers available for purchase.
[Click Images to Enlarge](#)

Reach Setting (Motion): For best results, it is recommended to adjust the motion sensitivity of the unit by configuring the reach setting. Reach is the term used to describe the radius of the circular detection zone produced on the ground. After mounting the sensor at a height of 8.2 feet, operators can adjust each control to select distance sensitivity. This detection distance is measured using a person who is between 5.2 feet and 5.5 feet tall with an average build, moving at a speed of 1.0-1.5m/sec. If any of these variables are changed, the detection distance will also change.

The EXP-DNMS-N4X-AT-HV operates like a standard on/off light switch. The circuit is normally open when no motion is present. Once motion is detected, the internal switch changes to a closed circuit, allowing voltage to pass through the sensor and power the device(s) at the other end.

Voltage: This unit is designed to operate on 120V, 208V, 220V, 240V, or 277V AC electrical circuits. We also offer low voltage 12-24V AC or DC electrical systems. This sensor is suitable for use in environments where combustible dusts and particulates may be present.

[Motion Detected Through a Wall](#)

Hubs: The EXP-DNMS-N4X-AT-HV has 1/2" or 3/4" NPT tapped conduit openings for feed through versions, while dead end versions have a single conduit hub, providing easy and secure connection to main power line supplies. A bushing seal at each conductor opening prevents damage to wiring insulation.

Mount: This unit is easily wall mounted via integral mounting bracket, which can be adjusted -90° to +30° vertically after installation. The explosion proof detector provides up to 15` by 15` coverage when mounted at 16`.

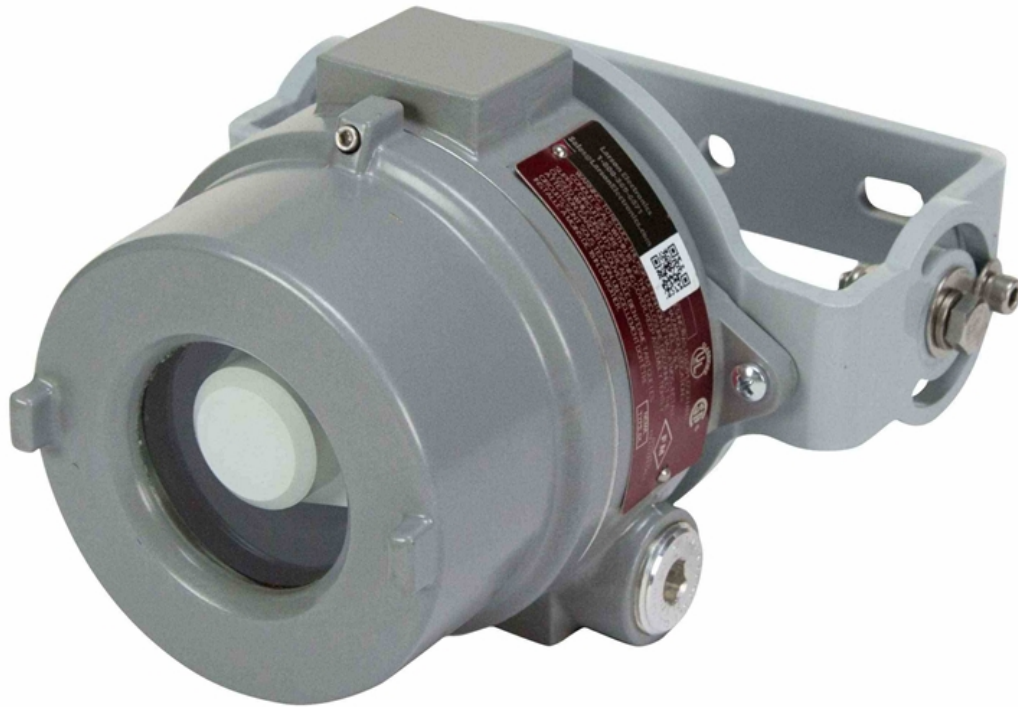
Suggested Applications: Manufacturing, Industrial, Warehouse, Lighting, Lighting, Wet areas or Locations Where Combustible Dust is Present.

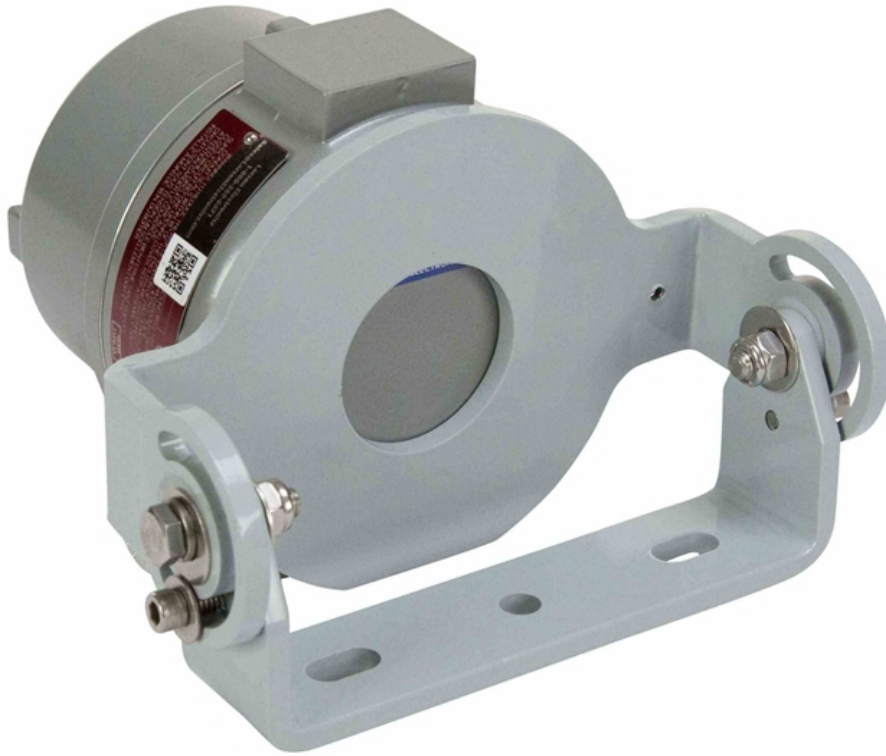
At Larson Electronics, we do more than meet your lighting needs. We also provide replacement, retrofit, and upgrade parts as well as industrial grade power accessories. Our craftsmen can custom build any lighting system and/or accessories to fit the unique demands of your operation. A commitment to honesty, quality, and dependability has made Larson Electronics a leader in the lighting and electronics business since 1973. Contact us today at 800-369-6671 or message sales@larsonelectronics.com for more information about our custom options tailored to meet your specific industry needs.



Frequently Asked Questions (FAQ)







Warranty: 12 Months

Options:

EXP-DNMS-N4X-AT-HV-Voltage-Operation-Hub Config

Example: EXP-DNMS-N4X-AT-HV-120V-NO-0.75IN

Voltage	
120V	-120V
208V	-208V
220V	-220V
240V	-240V
277V	-277V

Operation	
NORMALLY OPEN	-NO
NORMALLY CLOSED	-NC

Hub Config	
3/4 IN	-0.75IN
1/2 IN	-0.5IN

Links (Click on the below items to view):

- [Operations Manual](#)
- [HigResPic1](#)
- [HigResPic2](#)
- [HigResPic3](#)
- [HigResPic4](#)
- [HigResPic5](#)
- [HigResPic6](#)
- [HigResPic7](#)
- [HigResPic8](#)
- [HigResPic9](#)
- [HigResPic10](#)
- [Video1](#)
- [ISO 9001 Certification](#)
- [Business Certificate](#)