

Explosion Proof Motion Sensor - C1D1/C2D1 - 6' to 8' Mounting Height - NEMA EXP-MS-N4X-AT-HV-V4

Please see last page for supporting documentation for this product(certificates, CAD files & drawings, IES files, wiring diagrams, etc).



EXP-MS-N4X-AT-HV-V4 Explosion Proof Adjustable Motion Sensor

Listing: NRTL Listed for United States, Canada and IECEX/ATEX Rated

Dimensions: 7"-W x 5"-H x 9"-D

Detection: Motion

Detection Coverage: 15' x 15' (Mounted @ 6'-8')

Tilt Angles: -90° to +30° - Elevation

Reach: 6.5' to 32' - Adjustable

System Voltage: 120V, 208V, 220V, 240V or 277V AC

Maximum Wattage: 400W

Output Hold Time: 0.5 Secs to 15 Mins (Adjustable)

Mains Frequency: 50/60 Hz

Ambient Temperature Range: -22°F to +140°F

Radiated Frequency: 5.8 GHz

Operation: Normally Opened or Normally Closed

Wiring: Flying Leads

Certifications - Compliance

Listed for United States & Canada

Class I, Divisions 1 & 2, Groups B, C, D

Class I, Zones 1 & 2, Groups IIB+H2, IIA

Class II, Divisions 1 & 2, Groups E, F, G

Class III, Divisions 1 & 2

NEMA 3R, 4, 7 (B, C, D), 9 (E, F, G)

NRTL Listed to UL 508A

NRTL Listed to UL 1203

NRTL Listed to CSA C22.2 No 14, 25, 30

Special Orders- Requirements

Contact us for special requirements

Toll Free: 1-800-369-6671

Intl: 1-214-616-6180

Fax: 1-903-498-3364

E-mail: sales@larsonelectronics.com

The Larson Electronics EXP-MS-N4X-AT-HV-V4 Explosion Proof Motion Sensor is approved for Class I, Divisions 1 & 2 and Class II, Divisions 1 & 2 rated areas and provides the ability to power lights or other equipment within hazardous locations based on motion. This C1D1 rated motion sensor features adjustable sensitivity and time delay after motion. Designed for mounting at heights ranging between 6-8 feet, the EXP-MS-N4X-AT-HV-V4 can handle a maximum load of 400 watts.

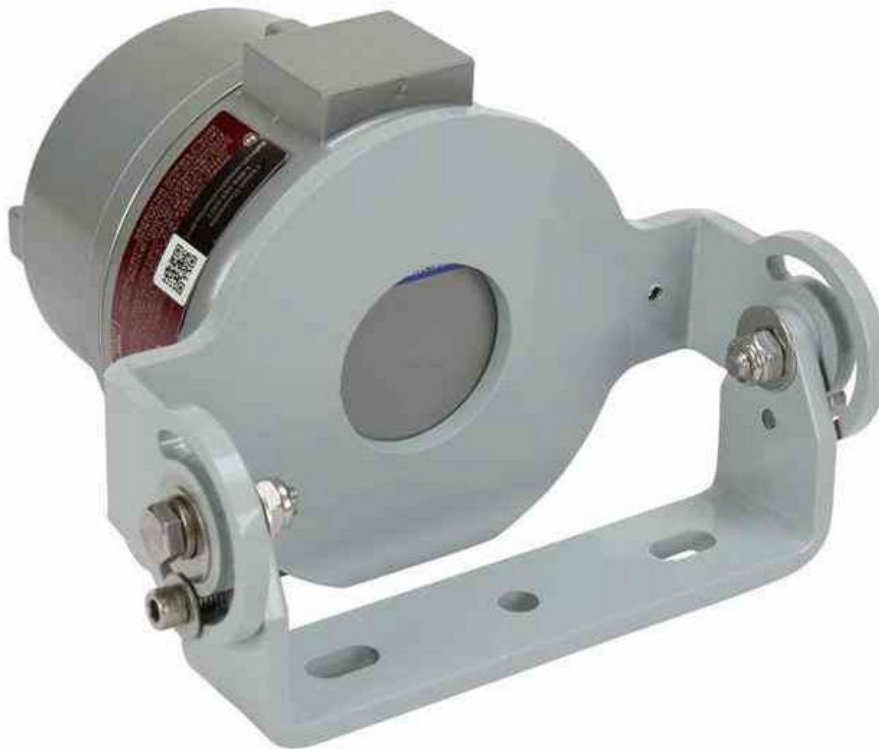
This explosion proof motion sensor is ideal for operators seeking a high quality explosion proof motion sensor rated for use in hazardous areas designated Class I, Divisions 1 and Class II, Division 1. This explosion proof motion detector provides up to 15' by 15' coverage when mounted at 6'-8'. The entire unit is constructed of copper free non-sparking aluminum construction with a glass window for motion detection. This unit is easily wall mounted via integral mounting bracket, which can be adjusted -90° to +30° vertically after installation. The explosion proof housing provides two 1/2" or 3/4" hub openings located on either side of the housing for running electrical conductors in a feed through configuration. A bushing seal at each conductor opening prevents damage to wiring insulation. This unit leverages cutting-edge microwave sensors to detect motion. When in use, the device sends out discreet waves that are reflected back from nearby walls



Frequently Asked Questions (FAQ)







Options:

EXP-MS-N4X-AT-HV-V4-Configuration-Hub Config

Example: EXP-MS-N4X-AT-HV-V4-NO-0.5IN

| Configuration | |
|-----------------|-----|
| NORMALLY OPEN | -NO |
| NORMALLY CLOSED | -NC |

| Hub Config | |
|------------|---------|
| 1/2IN | -0.5IN |
| 3/4IN | -0.75IN |

Links (Click on the below items to view):

- [ATEX Certificate \(European Explosion Proof\)](#)
- [Canadian CEC Certificate \(Commonly referred to as CSA Certificate\)](#)
- [CE Certificate](#)
- [Certificate 1, Misc](#)
- [Certificate 2, Misc](#)
- [Certificate 3, Misc](#)
- [Certificate 4, Misc](#)
- [Dimensional Drawing 2D](#)
- [IEC Ex Certificate \(International Explosion Proof\)](#)
- [MSDS \(Material Safety Data Sheet\)](#)
- [Operations Manual](#)
- [RoHS Certificate \(Restriction of Hazardous Substances\)](#)
- [USA NEC Certificate \(Commonly referred to as UL Certificate\)](#)
- [Wiring Diagram \(Online\)](#)
- [HigResPic1](#)
- [HigResPic2](#)
- [HigResPic3](#)
- [HigResPic4](#)
- [HigResPic5](#)
- [HigResPic6](#)
- [HigResPic7](#)
- [HigResPic8](#)
- [HigResPic9](#)
- [HigResPic10](#)
- [ISO 9001 Certification](#)
- [Business Certificate](#)