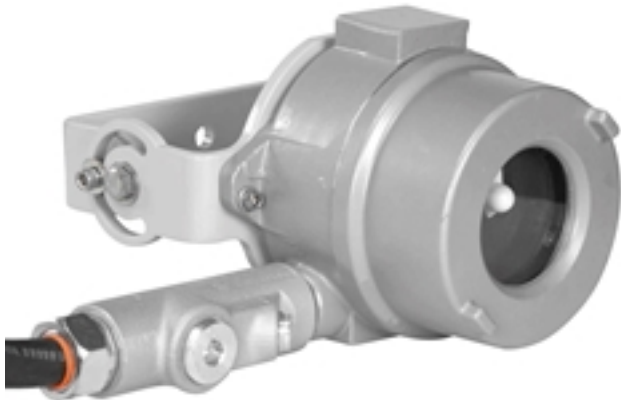


## 400W Explosion Proof Motion Sensor - 20' to 25' Mounting Height - 15' x 15' Area Coverage - Timer - 100' Cord

### EXP-MS-N4X-AT-LV-EYS-12.3-100C

Please see last page for supporting documentation for this product(certificates, CAD files & drawings, IES files, wiring diagrams, etc).



#### EXP-MS-N4X-AT-LV-EYS-12.3-100C Explosion Proof Adjustable Motion Sensor

Listing: NRTL Listed for United States, Canada and IECEx/ATEX Rated

Dimensions: 7"-W x 5"-H x 9"-D

Detection: Motion

Detection Coverage: 15' x 15' (Mounted @ 20'-25')

Tilt Angles: -90° to +30° - Elevation

Reach: 6.5' to 32' - Adjustable

System Voltage: 12 or 24V AC/DC

Maximum Wattage: 400W

Output Hold Time: 0.5 Secs to 15 Mins (Adjustable)

Mains Frequency: 50/60 Hz

Ambient Temperature Range: -22°F to +140°F

Radiated Frequency: 5.8 GHz

Operation: Normally Opened or Normally Closed

Wiring: 100' 12/3 SOOW Cord

#### Ratings / Features

Listed for United States & Canada

Class I, Divisions 1 & 2, Groups B, C, D

Class I, Zones 1 & 2, Groups IIB+H2, IIA

Class II, Divisions 1 & 2, Groups E, F, G

Class III, Divisions 1 & 2

NEMA 3R, 4, 7 (B, C, D), 9 (E, F, G)

NRTL Listed to UL 508A

NRTL Listed to UL 1203

NRTL Listed to CSA C22.2 No 14, 25, 30

#### Special Orders- Requirements

Contact us for special requirements

Toll Free: 1-800-369-6671

Intl: 1-214-616-6180

Fax: 1-903-498-3364

E-mail: [sales@larsonelectronics.com](mailto:sales@larsonelectronics.com)

**The Larson Electronics EXP-MS-N4X-AT-LV-EYS-12.3-100C Explosion Proof Motion Sensor is approved for Class I, Divisions 1 & 2 and Class II, Divisions 1 & 2 rated areas and provides the ability to power lights or other equipment within hazardous locations based on motion. This low voltage C1D1 rated motion sensor features adjustable sensitivity and time delay after motion. Designed for mounting at a height ranging between 20-25 feet, the EXP-MS-N4X-AT-LV-EYS-12.3-100C can handle a maximum load of 400 watts.**

This explosion proof motion sensor is ideal for operators seeking a high quality explosion proof motion sensor rated for use in hazardous areas designated Class I, Divisions 1 and Class II, Division 1. This explosion proof motion detector provides up to 15' by 15' coverage when mounted at 20'-25'. The entire unit is constructed of copper free non-sparking aluminum construction with a glass window for motion detection. This unit is easily wall mounted via integral mounting bracket, which can be adjusted -90° to +30° vertically after installation. This unit leverages cutting-edge microwave sensors to detect motion. When in use, the device sends out discreet waves that are reflected back from nearby walls and objects (not heat or light). Microwave sensors are not affected by line of

sight, resulting in wider and more accurate coverage of the target area. By comparison, traditional infrared sensors can only detect heat and light (factors used to identify movement) within the unit's field of view. Microwave sensors also provide stable performance in unpredictable climates and can penetrate glass, plastic and other non-metallic objects.

---

EXP-MS-N4X-AT in operation. [Click Here](#) to view our Flex Couplers available for purchase.  
[Click Images to Enlarge](#)

---

**Reach Setting:** For best results, it is recommended to adjust the motion sensitivity of the unit by configuring the reach setting. Reach is the term used to describe the radius of the circular detection zone produced on the ground. After mounting the sensor at a height of 20-25 feet, operators can adjust each control to select distance sensitivity. This detection distance is measured using a person who is between 5.2 feet and 5.5 feet tall with an average build, moving at a speed of 1.0-1.5m/sec. If any of these variables are changed, the detection distance will also change.

The EXP-MS-N4X-AT-LV-EYS-12.3-100C operates like a standard on/off light switch. The circuit is normally open when no motion is present. Once motion is detected, the internal switch changes to a closed circuit, allowing voltage to pass through the sensor and power the device(s) at the other end.

This unit is designed to operate on low voltage 12-24V AC or DC electrical circuits. This motion sensor is suitable for use in environments where combustible dusts and particulates may be present.

---

[Motion Detected Through a Wall](#)

---

**Wiring:** The EXP-MS-N4X-AT-LV-EYS-12.3-100C is equipped with 100' of 12/3 SOOW cord for completing power connections.

**Suggested Applications:** Manufacturing, Industrial, Warehouse, Lighting, Lighting, Wet areas or Locations Where Combustible Dust is Present.

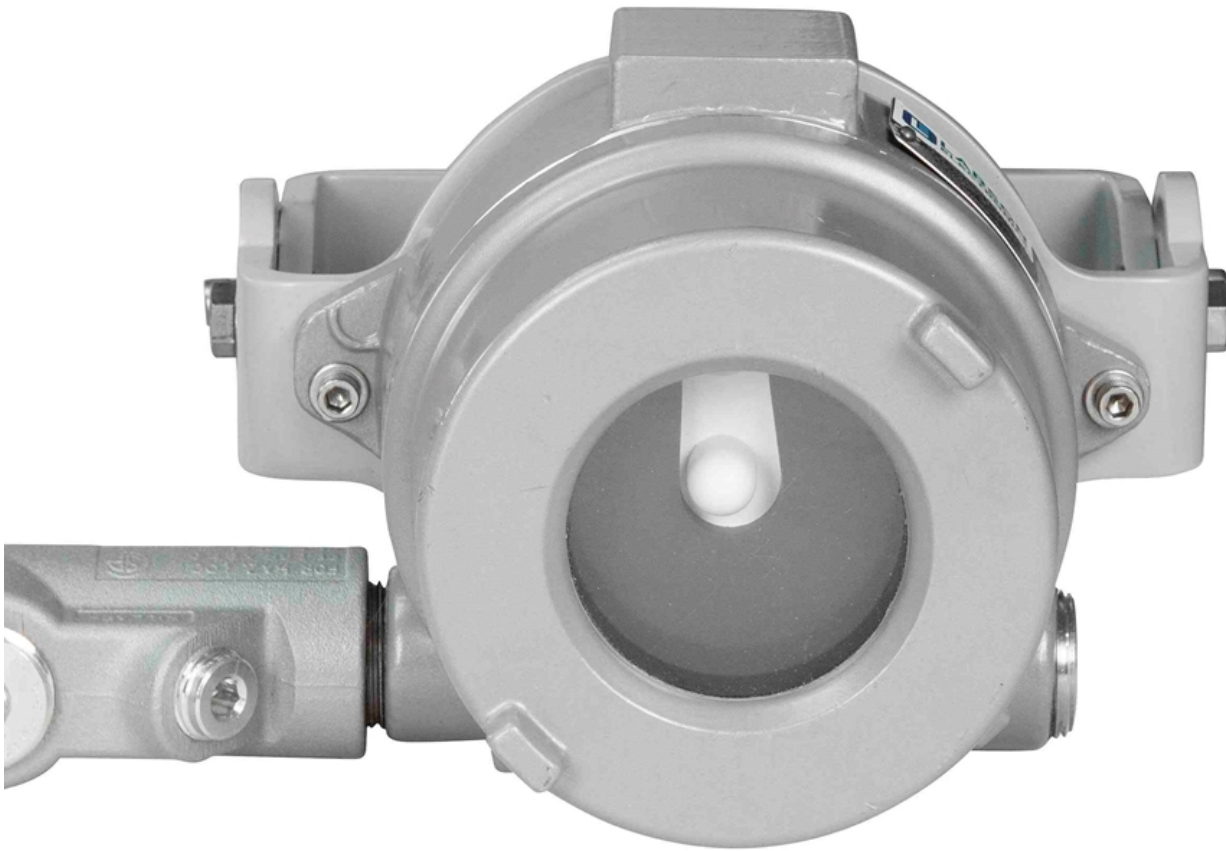
At Larson Electronics, we do more than meet your lighting needs. We also provide replacement, retrofit, and upgrade parts as well as industrial grade power accessories. Our craftsmen can custom build any lighting system and/or accessories to fit the unique demands of your operation. A commitment to honesty, quality, and dependability has made Larson Electronics a leader in the lighting and electronics business since 1973. Contact us today at 800-369-6671 or message [sales@larsonelectronics.com](mailto:sales@larsonelectronics.com) for more information about our custom options tailored to meet your specific industry needs.

---



---

## Frequently Asked Questions (FAQ)









**Warranty:** 12 Months

**Options:**

**EXP-MS-N4X-AT-LV-EYS-12.3-100C-Operation-Voltage**

**Example:** EXP-MS-N4X-AT-LV-EYS-12.3-100C-NO-12VDC

Operation	
NORMALLY OPEN	-NO
NORMALLY CLOSED	-NC

Voltage	
12V DC	-12VDC
24V DC	-24VDC



Links (Click on the below items to view):

- [ATEX Certificate \(European Explosion Proof\)](#)
- [Canadian CEC Certificate \(Commonly referred to as CSA Certificate\)](#)
- [CE Certificate](#)
- [Certificate 1, Misc](#)
- [Certificate 2, Misc](#)
- [Certificate 3, Misc](#)
- [Certificate 4, Misc](#)
- [Dimensional Drawing 2D](#)
- [IEC Ex Certificate \(International Explosion Proof\)](#)
- [MSDS \(Material Safety Data Sheet\)](#)
- [Operations Manual](#)
- [RoHS Certificate \(Restriction of Hazardous Substances\)](#)
- [USA NEC Certificate \(Commonly referred to as UL Certificate\)](#)
- [HigResPic1](#)
- [HigResPic2](#)
- [HigResPic3](#)
- [HigResPic4](#)
- [HigResPic5](#)
- [HigResPic6](#)
- [HigResPic7](#)
- [HigResPic8](#)
- [Video1](#)
- [ISO 9001 Certification](#)
- [Business Certificate](#)