

Explosion Proof Motion Sensor - Detection up to 40m x 38m - Adjustable Timer - LV EXP-MS-N4X-AT-LV-V7

Please see last page for supporting documentation for this product(certificates, CAD files & drawings, IES files, wiring diagrams, etc).



EXP-MS-N4X-AT-LV-V7 Explosion Proof Adjustable Motion Sensor

Listing: NRTL Listed for United States, Canada and International; ATEX/IECEX Rated
Listed for United States & Canada

Detection: Motion

Detection Distance: 40m x 38m Zone

Tilt Angles: -90° to +30° in Elevation

System Voltage: 12 or 24V AC/DC

Maximum Amperage: 5A

No Load Current: 1W, 0.09A @ 12V, 0.045A @ 24V

Output Hold Time: 0.5 seconds to 15 minutes (Adjustable)

Mains Frequency: 50/60 Hz

Ambient Temperature Range: -22°F to +140°F

Radiated Frequency: 10 GHz

Mounting Height: 5 meters

Ratings / Features

Listed for United States & Canada

Class I, Divisions 1 & 2, Groups B, C, D

Class I, Zones 1 & 2, Groups IIB+H2, IIA

Class II, Divisions 1 & 2, Groups E, F, G

Class III, Divisions 1 & 2

NEMA 3R, 4, 7 (B, C, D), 9 (E, F, G)

NRTL Listed to UL 508A

NRTL Listed to UL 1203

NRTL Listed to CSA C22.2 No 14, 25, 30

Special Orders- Requirements

Contact us for special requirements

Toll Free: 1-800-369-6671

Intl: 1-214-616-6180

Fax: 1-903-498-3364

E-mail: sales@larsonelectronics.com

The Larson Electronics EXP-MS-N4X-AT-LV-V7 Explosion Proof motion sensor is Class I, Division 1 & 2 and Class II, Division 1 & 2 rated and provides the ability to power lights or other equipment within hazardous locations based on motion. This low voltage motion sensor features adjustable sensitivity and time delay after motion. Designed for high bay lights or detecting horizontal movement, this unit is suitable for sensing motion in a zone measuring 40 meters by 38 meters.

The low voltage explosion proof motion sensor is ideal for operators seeking a high quality explosion proof motion sensor rated for use in hazardous areas designated Class I, Division 1 and Class II, Division 1. This explosion proof motion detector can be mounted at distances up to 40 meters away from the target area, at a mounting height of 5 meters. The entire unit is constructed of copper free non-sparking aluminum construction with a glass window for motion detection. This unit is easily wall mounted via integral mounting bracket, which can be adjusted -90° to +30° vertically after installation. The explosion proof housing provides two 1/2" or 3/4" hub openings located on either side of the housing for running electrical conductors in a feed through configuration. A bushing seal at each conductor opening prevents damage to wiring insulation.

This unit leverages cutting-edge microwave sensors to detect motion. When in

use, the device sends out discreet waves that are reflected back from nearby walls and objects (not heat or light). Microwave sensors are not affected by line of sight, resulting in wider and more accurate coverage of the target area. By comparison, traditional infrared sensors can only detect heat and light (factors used to identify movement) within the unit's field of view. Microwave sensors also provide stable performance in unpredictable climates and can penetrate glass, plastic and other non-metallic objects.

EXP-MS-N4X-AT in operation. [Click Here](#) to view our Flex Couplers available for purchase.
[Click Images to Enlarge](#)

This unit is designed to operate on low voltage 12-24V AC or DC electrical circuits. [We also make a model that is designed to operate on 120-277V high voltage electrical systems.](#) This motion sensor is suitable for use in environments where combustible dusts and particulates may be present.

Motion Detected Through a Wall

1/2" or 3/4" NPT tapped conduit openings are provided on either of the unit in feed through versions while dead end versions have a single conduit hub, providing easy and secure connection to main power line supplies.

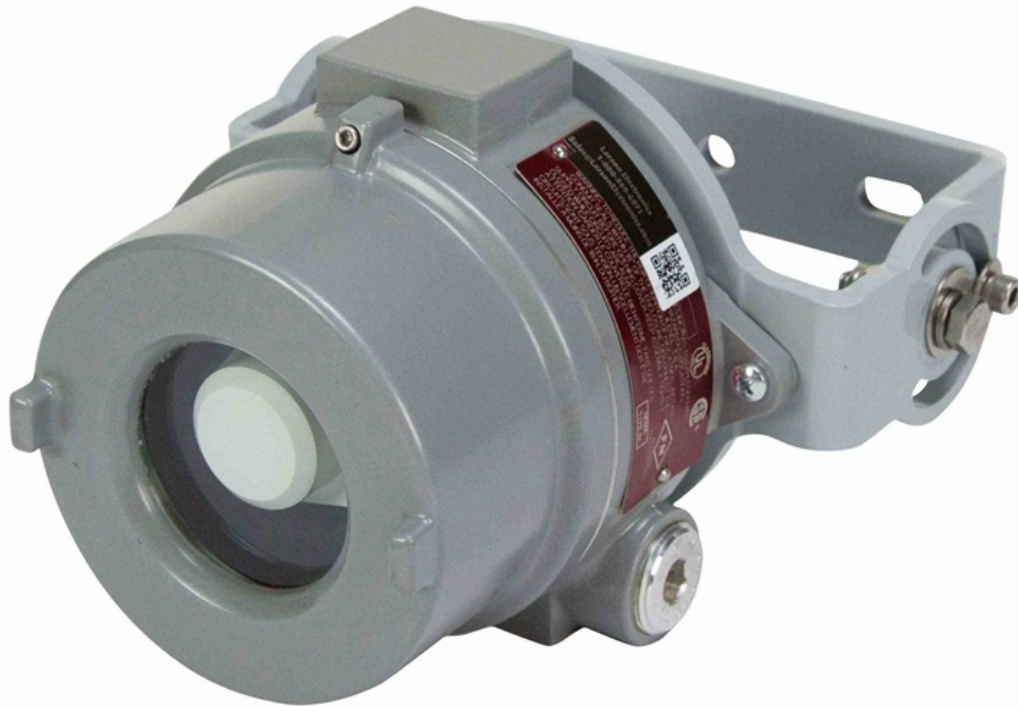
Suggested Applications: High Bay Lights, Horizontal Movement Detection, Manufacturing, Industrial, Warehouse, Lighting, Wet areas or Locations Where Combustible Dust is Present.

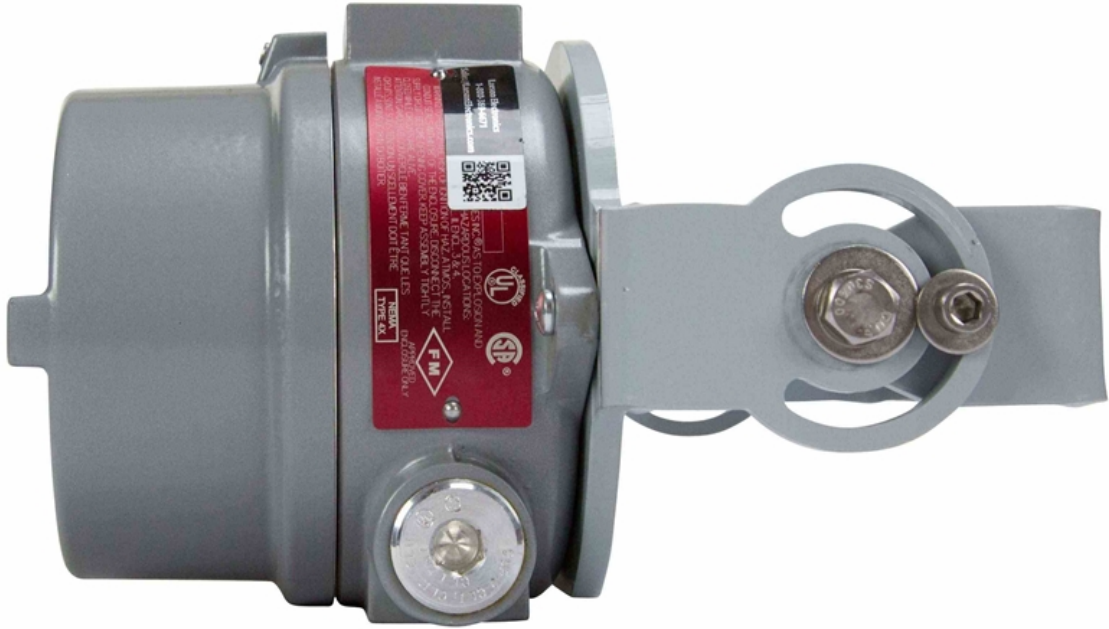
At Larson Electronics, we do more than meet your lighting needs. We also provide replacement, retrofit, and upgrade parts as well as industrial grade power accessories. Our craftsmen can custom build any lighting system and/or accessories to fit the unique demands of your operation. A commitment to honesty, quality, and dependability has made Larson Electronics a leader in the lighting and electronics business since 1973. Contact us today at 800-369-6671 or message sales@larsonelectronics.com for more information about our custom options tailored to meet your specific industry needs.

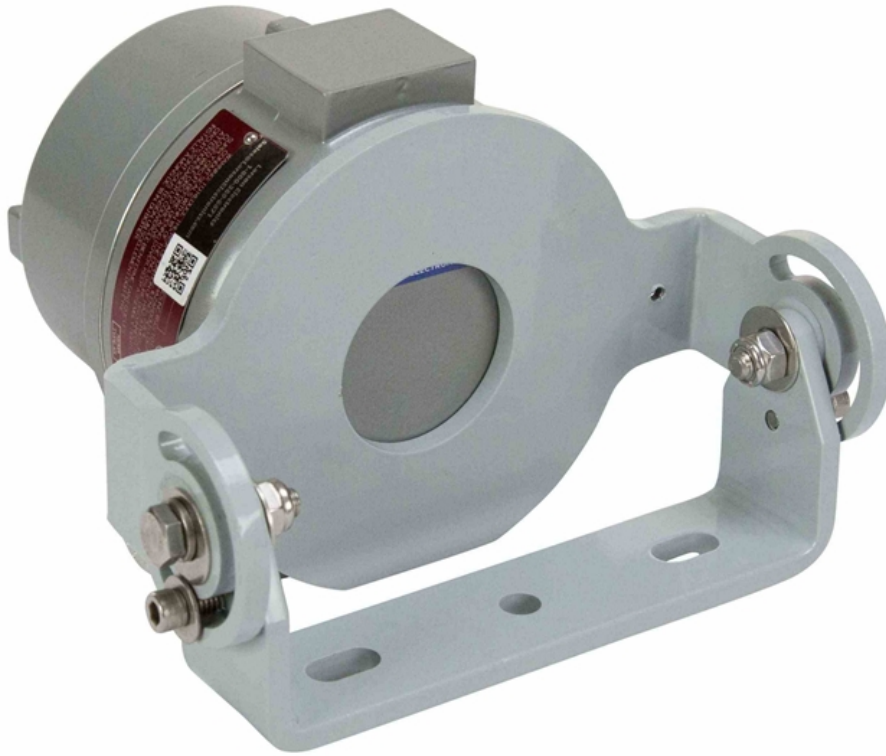


Frequently Asked Questions (FAQ)









Options:

EXP-MS-N4X-AT-LV-V7-Voltage

Example: EXP-MS-N4X-AT-LV-V7-12VDC

Voltage	
12V DC	-12VDC
24V DC	-24VDC

Links (Click on the below items to view):

- [ATEX Certificate \(European Explosion Proof\)](#)
- [Canadian CEC Certificate \(Commonly referred to as CSA Certificate\)](#)
- [CE Certificate](#)
- [Certificate 1, Misc](#)
- [Certificate 2, Misc](#)
- [Certificate 3, Misc](#)
- [Certificate 4, Misc](#)
- [Dimensional Drawing 2D](#)
- [IEC Ex Certificate \(International Explosion Proof\)](#)
- [MSDS \(Material Safety Data Sheet\)](#)
- [Operations Manual](#)
- [RoHS Certificate \(Restriction of Hazardous Substances\)](#)
- [USA NEC Certificate \(Commonly referred to as UL Certificate\)](#)
- [HigResPic1](#)
- [HigResPic2](#)
- [HigResPic3](#)
- [HigResPic4](#)
- [HigResPic5](#)
- [HigResPic6](#)
- [HigResPic7](#)
- [HigResPic8](#)
- [HigResPic9](#)
- [HigResPic10](#)
- [ISO 9001 Certification](#)
- [Business Certificate](#)