

400W Rated Explosion Proof Photocell - 125V DC HV - Day/Night Sensor - Dusk-to-Dawn Operation

EXP-PHOTOCELL-125VDC

Please see last page for supporting documentation for this product(certificates, CAD files & drawings, IES files, wiring diagrams, etc).



EXP-PHOTOCELL-125VDC Explosion Proof Photocell

Listing: NRTL Listed for United States & Canada

Type: Explosion Proof Photocell

Dimensions: 4 1/4" x 2 5/8"

Weight: 1 lb

Wattage Range: 35W-400W

Tungsten/Ballast Rating: 400 Watts

Voltage: 125V DC, High Voltage

Frequency Rating: -

On/Off Activation: 3 FC (On), 8 FC (Off)

Time Delay: 10 Seconds

Operating Life: 8+ Years

Construction: Corrosion-resistant Thermoplastic Polyester

Materials: Feraloy Iron Alloy

Mount: (2) 3/4" Feed-Thru Hubs

Wiring: 6" Stranded Color-coded Wire Leads

Ratings / Features

Class I, Divisions 1 & 2, Groups B, C, D

Class I, Zones 1 & 2, Groups IIB+H2, IIA

Class II, Divisions 1 & 2, Groups E, F, G

Class III, Divisions 1 & 2

NEMA 3R, 4, 7 (B, C, D), 9 (E, F, G)

NRTL Listed to UL 508A

NRTL Listed to UL 1203

NRTL Listed to CSA C22.2 No 14, 25, 30

Suitable for LED, HID, Incandescent or Fluorescent Lights

Compact, Solid-state Design

Factory Sealed Components

Special Orders - Requirements

Contact us for special requirements

Toll Free: 1-800-369-6671

Intl: 1-214-616-6180

Fax: 1-903-498-3364

E-mail: sales@larsonelectronics.com

The EXP-PHOTOCELL-125VDC from Larson Electronics is an Explosion Proof Photocell that functions as a day/night sensor for HID, incandescent and fluorescent luminaries. The 400-watt rated unit automates dusk-to-dawn lighting controls by turning on compatible lights at 3 foot candles and off at 8 foot candles. Featuring a solid-state design, the device is suitable for use in hazardous locations, indoor/outdoor spaces and industrial facilities.

The EXP-PHOTOCELL-125VDC promotes safety by turning on outdoor luminaries in critical passageways at night. During operation, the field-installable device activates luminaries at 3 foot candles, while deactivating at 8 foot candles. With an electrical range of 35 watts to 400 watts, the unit is compatible with HID, incandescent and fluorescent lights. To prevent accidental tripping, the device comes with a 10-second time delay feature. The explosion proof photocell may also be used to conserve energy by only activating the luminaries when necessary. This device comes with an operating lifespan of 8 years. For durability, the EXP-PHOTOCELL-125VDC is constructed of corrosion-resistant thermoplastic polyester. The unit is furnished with 6" stranded color coded wire leads. Mounting may be

completed via two, 3/4" feed-thru hubs.

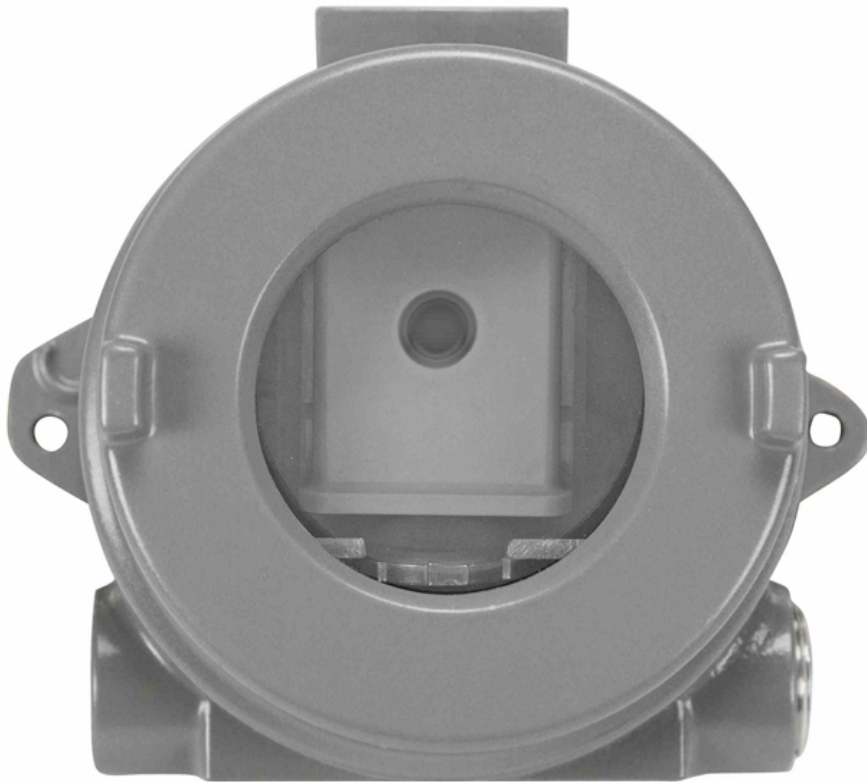
Voltage: The EXP-PHOTOCELL-125VDC-125VDC operates on 125V DC high voltage.

Applications: HID, incandescent and fluorescent luminaries/lighting systems in hazardous locations, such as oil and gas facilities, chemical processing plants, food manufacturing establishments, mining sites and more. This unit can be used to support remote lighting systems, security systems, hallway lighting and perimeter lighting systems.

At Larson Electronics, we do more than meet your lighting needs. We also provide replacement, retrofit, and upgrade parts as well as industrial grade power accessories. Our craftsmen can custom build any lighting system and/or accessories to fit the unique demands of your operation. A commitment to honesty, quality, and dependability has made Larson Electronics a leader in the lighting and electronics business since 1973. Contact us today at 800-369-6671 or message sales@larsonelectronics.com for more information about our custom options tailored to meet your specific industry needs.



Frequently Asked Questions (FAQ)









Links (Click on the below items to view):

- [ATEX Certificate \(European Explosion Proof\)](#)
- [Canadian CEC Certificate \(Commonly referred to as CSA Certificate\)](#)
- [CE Certificate](#)
- [Certificate 1, Misc](#)
- [Certificate 2, Misc](#)
- [Certificate 3, Misc](#)
- [Certificate 4, Misc](#)
- [Dimensional Drawing 2D](#)
- [IEC Ex Certificate \(International Explosion Proof\)](#)
- [MSDS \(Material Safety Data Sheet\)](#)
- [Operations Manual](#)
- [RoHS Certificate \(Restriction of Hazardous Substances\)](#)
- [SpecSheetSpanish](#)
- [USA NEC Certificate \(Commonly referred to as UL Certificate\)](#)
- [HigResPic1](#)
- [HigResPic2](#)
- [HigResPic3](#)
- [HigResPic4](#)
- [HigResPic5](#)
- [HigResPic6](#)
- [HigResPic7](#)
- [ISO 9001 Certification](#)
- [Business Certificate](#)