

Explosion Proof Photocell - 400 Watt Rated Day/Night Sensor - Dusk-to-Dawn Operation EXP-PHOTOCELL

Please see last page for supporting documentation for this product(certificates, CAD files & drawings, IES files, wiring diagrams, etc).



EXP-PHOTOCELL Explosion Proof Photocell

Type: Explosion Proof Photocell

Dimensions: 4 1/4" x 2 5/8"

Wattage Range: 35W-400W

Tungsten/Ballast Rating: 400 Watts

Voltage: 120V AC, 208-277V AC, 12V DC, or 24V DC

Frequency Rating: 50/60 Hz

On/Off Activation: 3 FC (On), 8 FC (Off)

Time Delay: 10 Seconds

Operating Life: 8+ Years

Construction: Corrosion-resistant Thermoplastic Polyester

Materials: Feraloy Iron Alloy

Wiring: 6" Stranded 600V Color-coded Wire Leads

Mount: (2) 3/4" Feed-Thru Hubs

Weight: 1 lb

Ratings / Features

Listed for United States & Canada

Class I, Divisions 1 & 2, Groups B, C, D

Class I, Zones 1 & 2, Groups IIB+H2, IIA

Class II, Divisions 1 & 2, Groups E, F, G

Class III, Divisions 1 & 2

NEMA 3R, 4, 7 (B, C, D), 9 (E, F, G)

NRTL Listed to UL 508A

NRTL Listed to UL 1203

NRTL Listed to CSA C22.2 No 14, 25, 30

Suitable for LED, HID, Incandescent or Fluorescent Lights

Compact, Solid-state Design

Factory Sealed Components

Special Orders- Requirements

Contact us for special requirements

Toll Free: 1-800-369-6671

Intl: 1-214-616-6180

Fax: 1-903-498-3364

E-mail: sales@larsonelectronics.com

The EXP-PHOTOCELL from Larson Electronics is an Explosion Proof Photocell that functions as a day/night sensor for HID, incandescent and fluorescent luminaires. The 400-watt rated unit automates dusk-to-dawn lighting controls by turning on compatible lights at 3 footcandles and off at 8 footcandles. Featuring a solid-state design, the device is suitable for use in hazardous locations, indoor/outdoor spaces and industrial facilities. When ordering this unit, please choose from the following voltage options: 120V AC, 208-277V AC, 12V DC, or 24V DC.

The EXP-PHOTOCELL promotes safety by turning on outdoor luminaires in critical passageways at night. During operation, the field-installable device activates luminaires at 3 footcandles, while deactivating at 8 footcandles. With an electrical range of 35 watts to 400 watts, the unit is compatible with HID, incandescent and fluorescent lights. To prevent accidental tripping, the device comes with a 10-second time delay feature. The explosion proof photocell may also be used to conserve energy by only activating the luminaires when necessary.

This device comes with an operating lifespan of 8 years. For durability, the EXP-PHOTOCELL is constructed of corrosion-resistant thermoplastic polyester. The unit

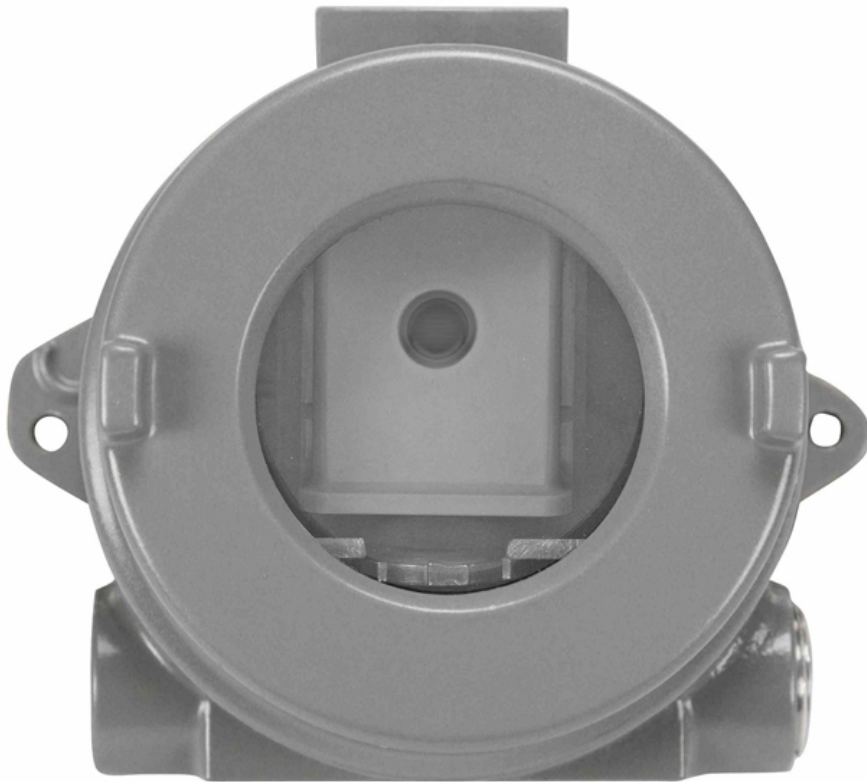
is furnished with 6" stranded 600 volt color coded wire leads. Mounting may be completed via two, 3/4" feed-thru hubs.

Applications: HID, incandescent and fluorescent luminaries/lighting systems in hazardous locations, such as oil and gas facilities, chemical processing plants, food manufacturing establishments, mining sites and more. This unit can be used to support remote lighting systems, security systems, hallway lighting and perimeter lighting systems.

At Larson Electronics, we do more than meet your lighting needs. We also provide replacement, retrofit, and upgrade parts as well as industrial grade power accessories. Our craftsmen can custom build any lighting system and/or accessories to fit the unique demands of your operation. A commitment to honesty, quality, and dependability has made Larson Electronics a leader in the lighting and electronics business since 1973. Contact us today at 800-369-6671 or message sales@larsonelectronics.com for more information about our custom options tailored to meet your specific industry needs.



Frequently Asked Questions (FAQ)









Options:

EXP-PHOTOCELL-Voltage

Example: EXP-PHOTOCELL-120VAC

Voltage	
120V AC	-120VAC
208-277V AC	-277VAC
12VDC	-12VDC
24VDC	-24VDC

Links (Click on the below items to view):

- [ATEX Certificate \(European Explosion Proof\)](#)
- [Canadian CEC Certificate \(Commonly referred to as CSA Certificate\)](#)
- [CE Certificate](#)
- [Certificate 1, Misc](#)
- [Certificate 2, Misc](#)
- [Certificate 3, Misc](#)
- [Certificate 4, Misc](#)
- [Dimensional Drawing 2D](#)
- [IEC Ex Certificate \(International Explosion Proof\)](#)
- [MSDS \(Material Safety Data Sheet\)](#)
- [Operations Manual](#)
- [RoHS Certificate \(Restriction of Hazardous Substances\)](#)
- [SpecSheetSpanish](#)
- [STEP File \(3D CAD Model\)](#)
- [USA NEC Certificate \(Commonly referred to as UL Certificate\)](#)
- [HigResPic1](#)
- [HigResPic2](#)
- [HigResPic3](#)
- [HigResPic4](#)
- [HigResPic5](#)
- [HigResPic6](#)
- [HigResPic7](#)
- [ISO 9001 Certification](#)
- [Business Certificate](#)