

## Explosion Proof 1080p Analog Portable Observation Camera - Day/Night Infrared - 50' Cord - 120/240V

**EXPCMR-ALG-1080P-50FT-1227**

**Please see last page for supporting documentation for this product(certificates, CAD files & drawings, IES files, wiring diagrams, etc).**



### EXPCMR-ALG-1080P-50FT-1227 Explosion Proof Remote Observation Camera

**Dimensions:** 8"L x 6"W x 9"H

**Camera Weight:** 8 lb

**Total Watts:** 3.5 W Max

**Voltage:** 100-240 V, 50/60 Hz (primary), 12 V DC (secondary)

**Image Sensor:** 1/2.7" Progressive Scan CMOS

**Signal System:** NTSC

**Signal System:** NTSC

**Effective Pixels:** 1930(H) \* 1088(V)

**Min. Illumination:** 0.1 Lux @ F1.2 AGC On / 0 Lux w/ IR

**Shutter Speed:** 1/30s to 1/50,000s

**Lens:** 3.6mm

**Angle of View:** 90°

**Day/Night:** ICR

**Video Framerate:** 1080p @ 30fps

**Video Output:** (1) Analog HD Output

**Signal to Ratio:** >52 dB

**Language:** English

**Ambient Temperature Range:** -10°C to +60°C

**Housing Materials:** Aluminum

**Lens Material:** Tempered Glass

**Mounting:** Adjustable Bracket

**Wiring:** 50' Continuously Corrugated Aluminum Armored Coaxial Cable, 50' 16/3 SOOW

**Cord Cap:** 5-15, 6-15, 5-20, 6-20, L5-15, L6-15, L5-20, L6-20, BS1363, Schuko, or Pigtail

### Quick Summary

Class I, Divisions 1 & 2, Groups B, C, D

Class I, Zones 1 & 2, Groups IIB+H2, IIA

Class II, Divisions 1 & 2, Groups E, F, G

Class III, Divisions 1 & 2

Ex db IIC Gb

Ex tb IIC Gb Db IP66

NEMA 3, 4, 4X, 7 (B, C, D), 9 (E, F, G)

### Special Orders - Requirements

Contact us for special requirements

**Toll Free: 1-800-369-6671**

**Intl: 1-214-616-6180**

**Fax: 1-903-498-3364**

**E-mail: [sales@larsonelectronics.com](mailto:sales@larsonelectronics.com)**

**The EXPCMR-ALG-1080P-50FT-1227 explosion proof high definition analog camera from Larson Electronics is an inspection camera that can be used for remote observation in hazardous locations. It is available in a fixed lens configuration, a 3.6mm 90° lens to capture large wide areas, and can produce an image up to 1080p resolution. The EXPCMR-ALG-1080P-50FT-1227 allows operators to see visual process data from a centralized control room up to 50' away with a portable camera solution.**

**Camera Features:** The EXPCMR-ALG-1080P-50FT-1227 portable explosion proof camera is designed to allow operators to have a live feed from inside a tank, reactor, vessel or other workplace observation in hazardous locations. The explosion proof camera is incredibly durable and ready to be deployed in many different workplace conditions. The camera is operated remotely from a

centralized control room which saves both time and money as well as contributing to workplace safety.

This explosion proof camera features an infrared LED array to allow for low light and nighttime visibility. The camera will automatically switch over to IR mode when lux levels drop below a preset level. This allows operators to have up to 50' of visibility in the dark. True day/night infrared cutfilter removal creates a crisp, sharp image that transmits with zero latency to HD resolution via metal clad coax cable to customer provided remote mount DVR systems.

This remote inspection camera features a pressure-resistant 316 stainless steel body and weighs just under 4.5 pounds. The camera itself features 1 lux sensitivity, a 2-wire transmitter and a polished stainless steel mounting bracket as well as a built-in color CCD camera and a 1/3" CCD sensor. The lens of the EXPCMR-ALG-1080P-50FT-1227 features a viewing angle between 28° and 60° and the minimum lens to object distance is 3.15 inches.

**Wiring:** Link-up with the camera is achieved 50' of hazardous location aluminum armored coax cable, connected to the camera via an explosion proof seal fitting. The cable is ran back to the customer provided DVR system, mounted outside the hazardous location. Power supply for the camera is ran via separate 50' 16/3 SOOW cord, terminated in an industrial grade cord cap.

**Mounting:** The EXPCMR-ALG-1080P-50FT-1227 explosion proof remote observation camera is typically mounted to flat surfaces for observation. Accessory pole mounts and magnetic mounts are available.

**Applications:** Vessel, tank and reactor monitoring, remote observation of external facilities, monitoring of cleaning, spray patterns, mixing, foaming, reaction, and level.

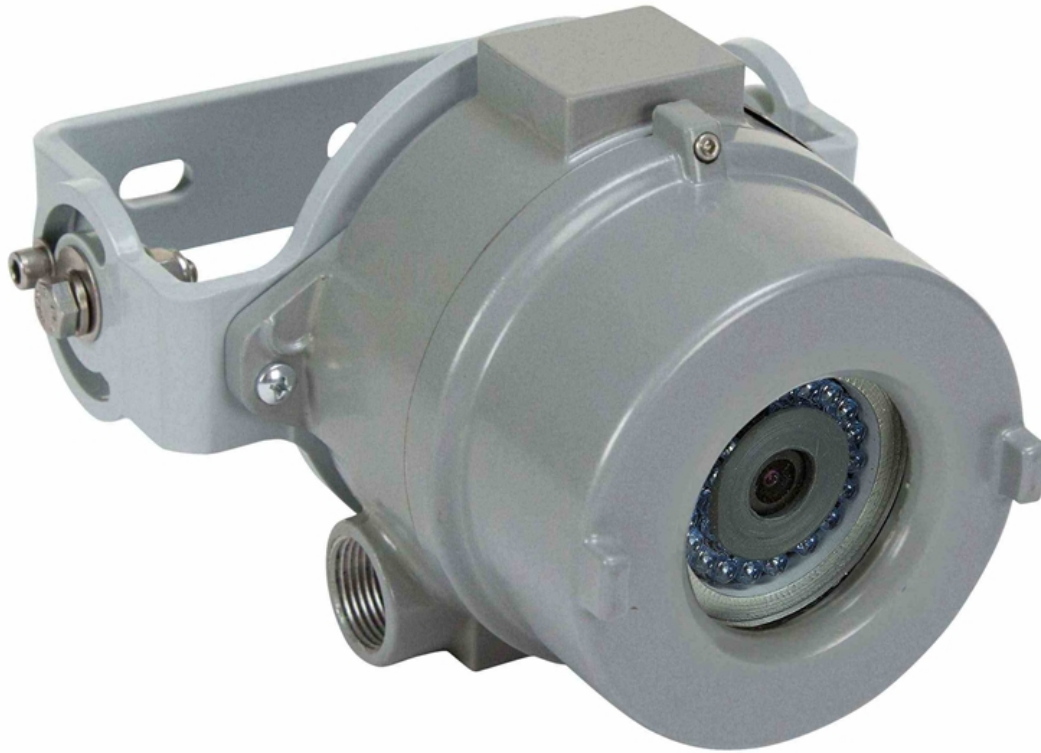
At Larson Electronics, we do more than meet your lighting needs. We also provide replacement, retrofit, and upgrade parts as well as industrial grade power accessories. Our craftsmen can custom build any lighting system and/or accessories to fit the unique demands of your operation. A commitment to honesty, quality, and dependability has made Larson Electronics a leader in the lighting and electronics business since 1973. Contact us today at 800-369-6671 or message [sales@larsonelectronics.com](mailto:sales@larsonelectronics.com) for more information about our custom options tailored to meet your specific industry needs.

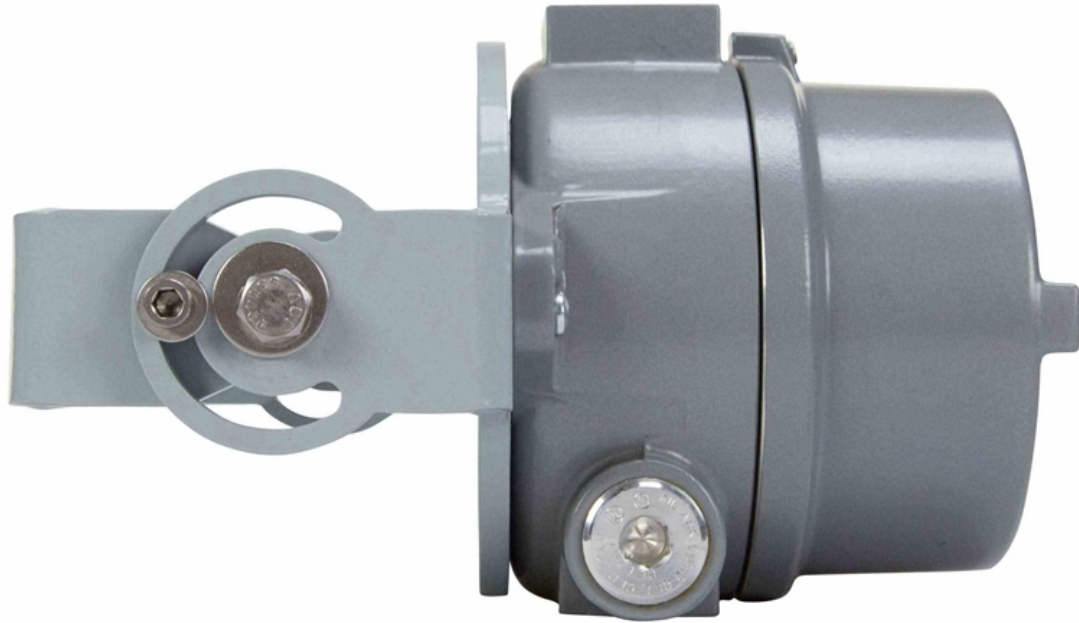


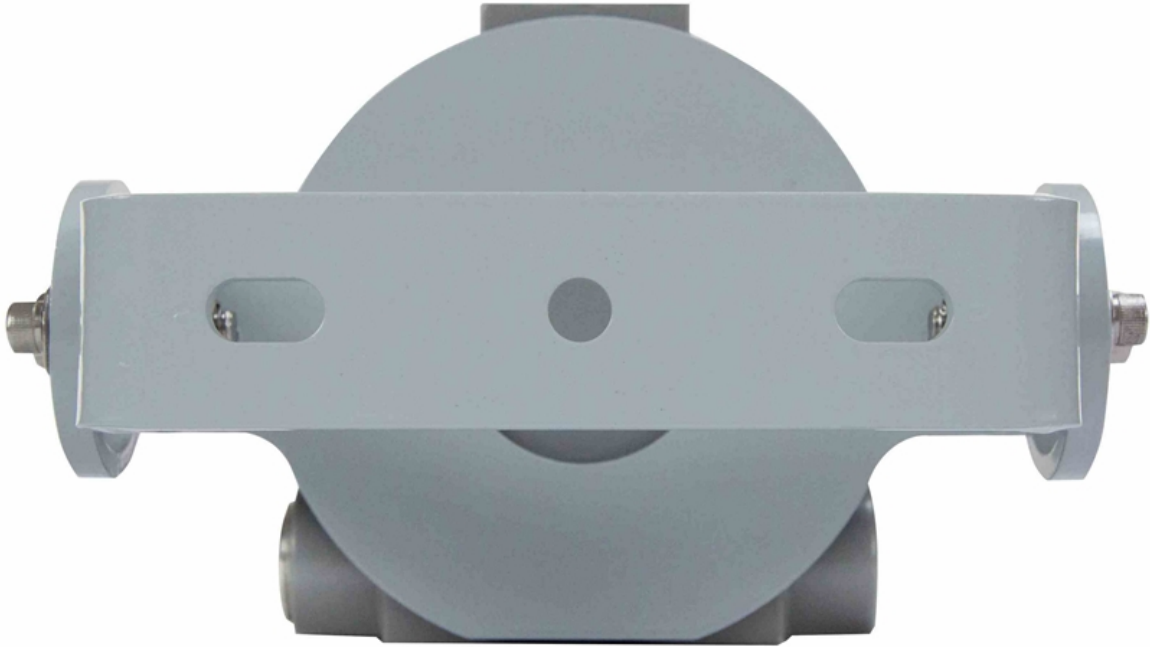
---

## Frequently Asked Questions (FAQ)









**Options:**

**EXPCMR-ALG-1080P-50FT-1227-Cord Cap**

**Example: EXPCMR-ALG-1080P-50FT-1227-5.15**

Cord Cap	
5-15 STRAIGHT	-5.15
6-15 STRAIGHT	-6.15
5-20 STRAIGHT	-5.20
6-20 STRAIGHT	-6.20
L5-15 TWIST	-L5.15
L6-15 TWIST	-L6.15
L5-20 TWIST	-L5.20
L6-20 TWIST	-L6.20
UK BS1363	-BS1363
INTL SCHUKO	-SCHUKO
PIGTAIL	-PIGTAIL



Links (Click on the below items to view):

- [ATEX Certificate \(European Explosion Proof\)](#)
- [Canadian CEC Certificate \(Commonly referred to as CSA Certificate\)](#)
- [CE Certificate](#)
- [Certificate 1, Misc](#)
- [Certificate 2, Misc](#)
- [Certificate 3, Misc](#)
- [Certificate 4, Misc](#)
- [Dimensional Drawing 2D](#)
- [Eye Safety Information/Certificate](#)
- [IEC Ex Certificate \(International Explosion Proof\)](#)
- [MSDS \(Material Safety Data Sheet\)](#)
- [RoHS Certificate \(Restriction of Hazardous Substances\)](#)
- [STEP File \(3D CAD Model\)](#)
- [USA NEC Certificate \(Commonly referred to as UL Certificate\)](#)
- [HigResPic1](#)
- [HigResPic2](#)
- [HigResPic3](#)
- [HigResPic4](#)
- [HigResPic5](#)
- [HigResPic6](#)
- [HigResPic7](#)
- [HigResPic8](#)
- [ISO 9001 Certification](#)
- [Business Certificate](#)