

## Explosion Proof 1080p Analog Portable Observation Camera - Day/Night - 120/240V - Stranded Wire

**EXPCMR-ALG-1080P-IC-1227**

**Please see last page for supporting documentation for this product(certificates, CAD files & drawings, IES files, wiring diagrams, etc).**



### EXPCMR-ALG-1080P-IC-1227 Explosion Proof Remote Observation Camera

**Dimensions:** 8"L x 6"W x 9"H

**Camera Weight:** 8 lbs

**Total Watts:** 3.5W Max

**Voltage:** 100-240 V 50/60Hz (primary), 12 V DC (secondary)

**Video Framerate:** 1080p @ 30fps

**Image Sensor:** 1/2.7" Progressive Scan CMOS

**Signal System:** NTSC

**Effective Pixels:** 1930(H) \* 1088(V)

**Min. Illumination:** 0.1 Lux @ F1.2 AGC On / 0 Lux w/ IR

**Shutter Speed:** 1/30s to 1/50,000s

**Lens:** 3.6mm

**Angle of View:** 90°

**Day/Night:** ICR

**Infrared Range:** Up to 50'

**D/N Mode:** Color / BW/ Auto / EXT

**White Balance:** Auto / User / Push / 8000K / 6000K / 4200K / 3000K

**Privacy Mask:** On/Off, maximum 2 zones

**Motion Detection:** On/Off, maximum 4 zones

**Blacklight Compensation:** Support

**Anti-flicker:** On/Off

**Display Functions:** Digital noise reduction, Mirror

**Video Output:** (1) Analog HD Output

**Protocol:** Coaxitron

**Signal to Ratio:** >52 dB

**Language:** English

**Ambient Temperature Range:** -10°C to +50°C

**Housing Materials:** Aluminum

**Lens Material:** Tempered Glass

**Mounting:** Adjustable Bracket w/ set screws

**Power Connection:** Terminal Strips, Customer Provided Cord

**Signal Connection:** Terminal Strips, Customer Provided Stranded Wire, Customer Provided Inverter to BNC Connector

**Wiring:** Customer Provided 5-Conductor Cable

### Quick Summary

Class I, Divisions 1 & 2, Groups B, C, D

Class I, Zones 1 & 2, Groups IIB+H2, IIA

Class II, Divisions 1 & 2, Groups E, F, G

Class III, Divisions 1 & 2

Ex db IIC Gb

Ex tb IIC Gb Db IP66

NEMA 3, 4, 4X, 7 (B, C, D), 9 (E, F, G)

### Special Orders- Requirements

Contact us for special requirements

**Toll Free:** 1-800-369-6671

**Intl:** 1-214-616-6180

**Fax:** 1-903-498-3364

**E-mail:** [sales@larsonelectronics.com](mailto:sales@larsonelectronics.com)

**The EXPCMR-ALG-1080P-IC-1227 explosion proof high definition analog camera from Larson Electronics is an inspection camera that can be used for remote observation in hazardous locations. It is available in a fixed lens configuration, a 3.6mm 90° lens to capture large wide areas, and can**

---

**produce an image up to 1080p resolution. The EXPCMR-ALG-1080P-IC-1227 allows operators to see visual process data from a centralized control room up. This portable camera allows operators to use a single cable for signal and power.**

**Camera Features:** The EXPCMR-ALG-1080P-IC-1227 portable explosion proof camera is designed to allow operators to have a live feed from inside a tank, reactor, vessel or other workplace observation in hazardous locations. The explosion proof camera is incredibly durable and ready to be deployed in many different workplace conditions. The camera is operated remotely from a centralized control room which saves both time and money as well as contributing to workplace safety.

This explosion proof camera features an infrared LED array to allow for low light and nighttime visibility. The camera will automatically switch over to IR mode when lux levels drop below a preset level. This allows operators to have up to 50` of visibility in the dark. True day/night infrared cutoff filter removal creates a crisp, sharp image that transmits with zero latency to HD resolution via metal clad coax cable to customer provided remote mount DVR systems.

This remote inspection camera features a pressure-resistant 316 stainless steel body and weighs just under 4.5 pounds. The camera itself features 1 lux sensitivity, a 2-wire transmitter and a polished stainless steel mounting bracket as well as a built-in color CCD camera and a 1/3" CCD sensor. The lens of the EXPCMR-ALG-1080P-IC-1227 features a viewing angle between 28° and 60° and the minimum lens to object distance is 3.15 inches.

**Wiring:** Link-up with the camera is achieved via customer provided 5-conductor cable through one of the 3/4" NPT hubs. The cable is ran back to the customer provided DVR system, mounted outside the hazardous location. Terminal strips within the camera allow customers to terminate the power supply and signal for the camera. This unit operates on universal voltage 120/240V AC 50/60 Hz. A signal inverter ([BNC-ALG-SGL-XMFR](#), one mounted internally in the camera enclosure, one included for connecting on output end of cable) is connected to the customer provided cable, converting the camera signal from stranded wire to BNC connector.

**Mounting:** The EXPCMR-ALG-1080P-IC-1227 explosion proof remote observation camera is typically mounted to flat surfaces for observation. The included adjustable flat surface bracket has two set screws on the bracket, allowing operators to loosen the mounting bracket, adjust the camera`s tilt orientation, and retighten to hold the camera in position. A single thru-hole mounting bolt allows operators to adjust the rotation of the camera by loosening one bolt. Accessory pole mounts and magnetic mounts are available.

**Applications:** Vessel, tank and reactor monitoring, remote observation of external facilities, monitoring of cleaning, spray patterns, mixing, foaming, reaction, and level.

At Larson Electronics, we do more than meet your lighting needs. We also provide replacement, retrofit, and upgrade parts as well as industrial grade power accessories. Our craftsmen can custom build any lighting system and/or accessories to fit the unique demands of your operation. A commitment to honesty, quality, and dependability has made Larson Electronics a leader in the lighting and electronics business since 1973. Contact us today at 800-369-6671 or message [sales@larsonelectronics.com](mailto:sales@larsonelectronics.com) for more information about our custom options tailored to meet your specific industry needs.

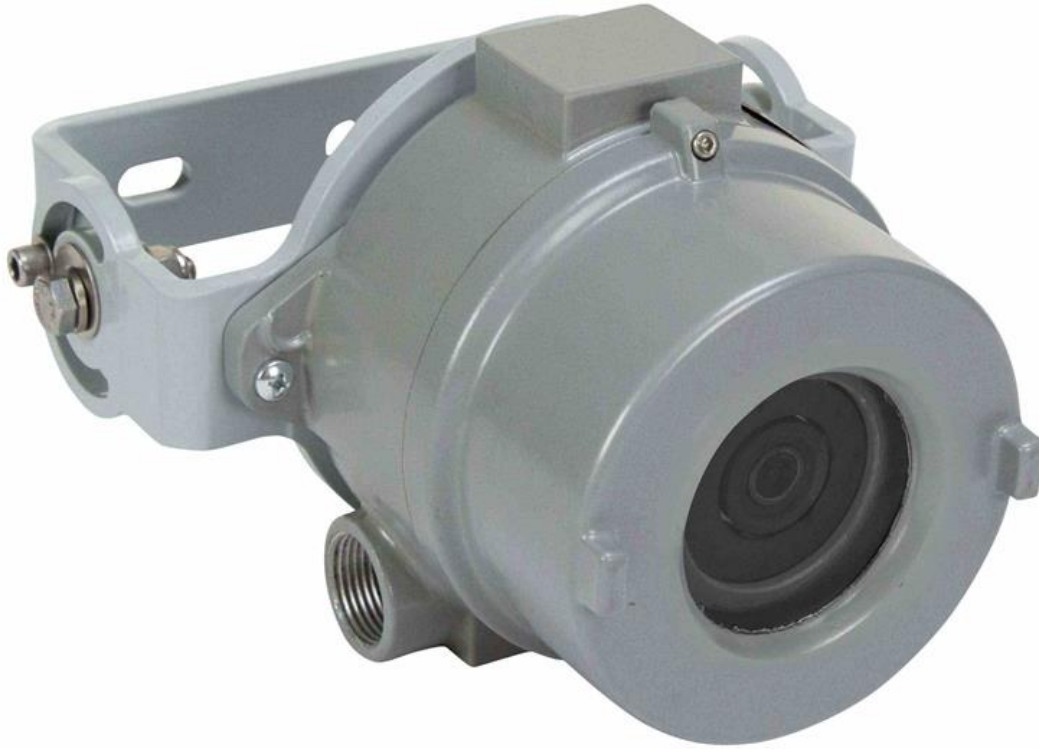
---

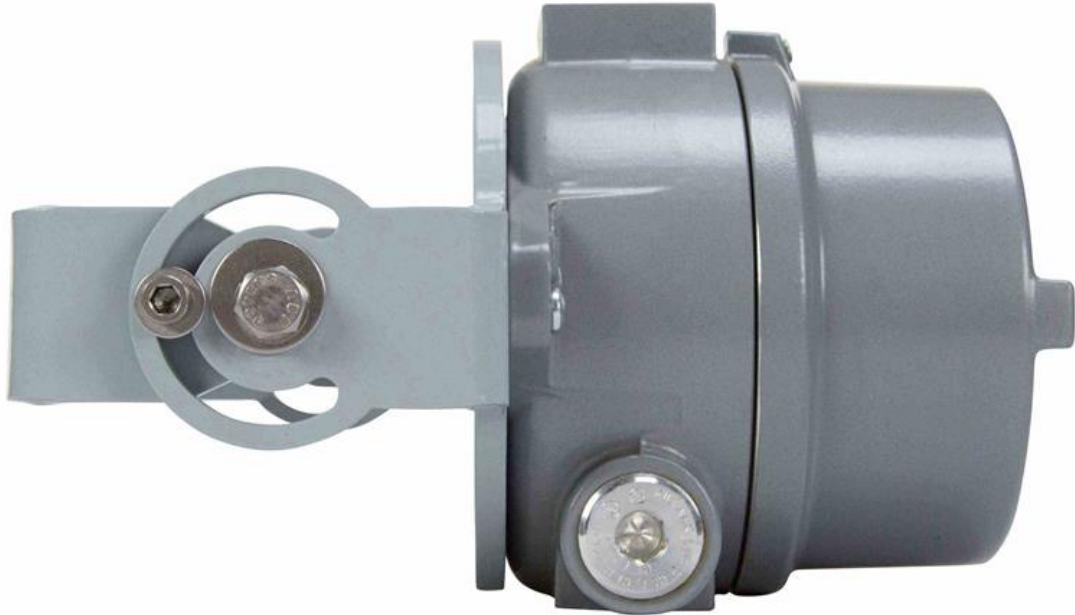


---

## Frequently Asked Questions (FAQ)









Links (Click on the below items to view):

- [ATEX Certificate \(European Explosion Proof\)](#)
- [Canadian CEC Certificate \(Commonly referred to as CSA Certificate\)](#)
- [CE Certificate](#)
- [Certificate 1, Misc](#)
- [Certificate 2, Misc](#)
- [Certificate 3, Misc](#)
- [Certificate 4, Misc](#)
- [Dimensional Drawing 2D](#)
- [IEC Ex Certificate \(International Explosion Proof\)](#)
- [MSDS \(Material Safety Data Sheet\)](#)
- [Operations Manual](#)
- [RoHS Certificate \(Restriction of Hazardous Substances\)](#)
- [SpecSheetFarsi](#)
- [SpecSheetFrench](#)
- [SpecSheetSpanish](#)
- [STEP File \(3D CAD Model\)](#)
- [USA NEC Certificate \(Commonly referred to as UL Certificate\)](#)
- [Wiring Diagram \(Online\)](#)
- [HigResPic1](#)
- [HigResPic2](#)
- [HigResPic3](#)
- [HigResPic4](#)
- [HigResPic5](#)
- [HigResPic6](#)
- [HigResPic7](#)
- [HigResPic8](#)
- [ISO 9001 Certification](#)
- [Business Certificate](#)