

Explosion Proof 1080p HD Security Camera - Optical & Digital Zoom - IP67 - Low Voltage EXPCMR-ALG-OZ-IC-1080P-1224

Please see last page for supporting documentation for this product(certificates, CAD files & drawings, IES files, wiring diagrams, etc).



EXPCMR-ALG-OZ-IC-1080P-1224 Explosion Proof Remote Observation Camera

Dimensions: 8"L x 6"W x 9"H

Camera Weight: 3.7 lbs

Total Watts: -

Voltage: 12V DC or 24V DC

Image Sensor: CMOS

Signal System: NTSC

Connectors: Terminal Strips

Effective Pixels: 1956(H) * 1266(V)

Min. Illumination: 0.1 Lux @ F1.2 AGC On / 0 Lux w/ IR

Shutter Speed: 1/25(1/30s) to 1/50,000s

Lens: 5-50mm Focal Length

Angle of View: 90°

Day/Night: ICR

Video Framerate: 1080p @ 30fps

Video Output: Analog over Copper Wire

Signal to Ratio: >62 dB

Language: English

Ambient Temperature Range: -10°C to +60°C

Housing Materials: Aluminum

Lens Material: Tempered Glass

Mounting: Adjustable Bracket

Wiring Hub: (2) 3/4" NPT

Quick Summary

Class I, Divisions 1 & 2, Groups B, C, D

Class I, Zones 1 & 2, Groups IIB+H2, IIA

Class II, Divisions 1 & 2, Groups E, F, G

Class III, Divisions 1 & 2

Ex db IIC Gb

Ex tb IIC Gb Db IP66

NEMA 3, 4, 4X, 7 (B, C, D), 9 (E, F, G)

Special Orders- Requirements

Contact us for special requirements

Toll Free: 1-800-369-6671

Intl: 1-214-616-6180

Fax: 1-903-498-3364

E-mail: sales@larsonelectronics.com

The EXPCMR-ALG-OZ-IC-1080P-1224 Explosion Proof Camera from Larson Electronics is designed for security and remote observation in both indoor and outdoor hazardous environments. This 1080p HD high resolution security camera features a 150` range, 10x optical zoom with autofocus, and 62x digital zoom for maximal coverage and accuracy. A digital inverter supports both HD-TVI and CVBS analog output. The EXPCMR-ALG-OZ-IC-1080P-1224 operates on either 12V DC or 24V DC current. Make selection when ordering below.

Camera Features: The EXPCMR-ALG-OZ-IC-1080P-1224 security camera provides operators in hazardous areas with crisp 1080p HD high resolution images. A 5-50mm motorized lens automatically adjusts focus, providing operators with a precise 10x optical zoom and autofocus and 62x digital zoom image. A digital inverter supports both HD-TVI and CVBS analog output to a customer provided remote mount DVR system. This camera measures a compact 12.34" x 3.96" x 4.22" and the mounting base allows for precise aiming with 90°

of vertical adjustment.

The EXPCMR-ALG-OZ-IC-1080P-1224 security camera is built to perform under harsh and rugged conditions. This IP67 rated waterproof unit resists the corrosive effects of weather, dust, dirt, and humidity. This Class I Divisions 1 & 2, Class II Divisions 1 & 2, Class III Divisions 1 & 2 rated camera provides property and product security while also protecting operators with its safe and reliable explosion proof and weatherproof design.

Wiring: This unit is designed to operate on 12V DC or 24V DC. Make selection below when ordering. Link-up with the camera is achieved via customer provided standard stranded cable such as SOOW. The cable video/power drop cable can be routed either through the mounting surface or through a cable guide on the edge of the mounting base.

Mounting: The EXPCMR-ALG-OZ-IC-1080P-1224 explosion proof security camera is secured to flat surface, such as a ceiling or wall, using an adjustable reverse pedestal style bracket. The included mounting bracket allows 90° vertical adjustment and 360° of swivel for precision aiming.

Applications: Vessel, tank and reactor monitoring, remote observation of external facilities, offshore and land based rigs, indoor and outdoor security, commercial buildings

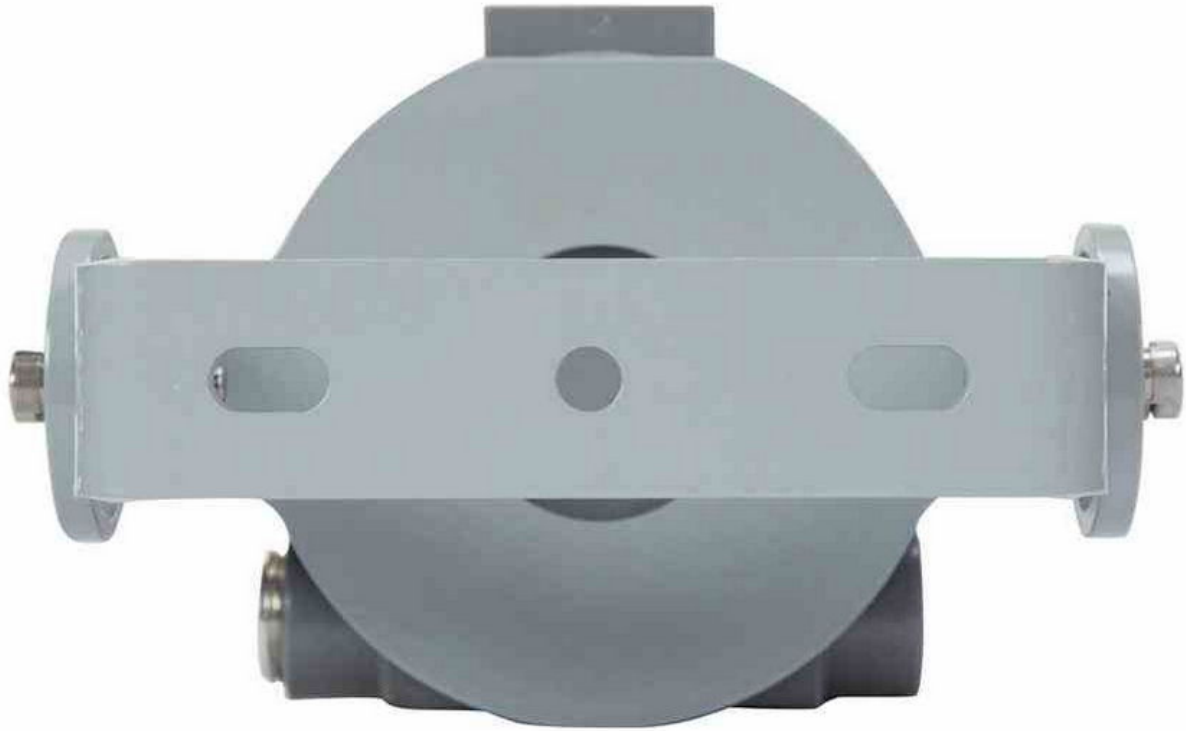
At Larson Electronics, we do more than meet your lighting needs. We also provide replacement, retrofit, and upgrade parts as well as industrial grade power accessories. Our craftsmen can custom build any lighting system and/or accessories to fit the unique demands of your operation. A commitment to honesty, quality, and dependability has made Larson Electronics a leader in the lighting and electronics business since 1973. Contact us today at 800-369-6671 or message sales@larsonelectronics.com for more information about our custom options tailored to meet your specific industry needs.



Frequently Asked Questions (FAQ)







Options:

EXPCMR-ALG-OZ-IC-1080P-1224-Voltage

Example: EXPCMR-ALG-OZ-IC-1080P-1224-12VDC

Voltage	
12V DC	-12VDC
24V DC	-24VDC

Links (Click on the below items to view):

- [ATEX Certificate \(European Explosion Proof\)](#)
- [Canadian CEC Certificate \(Commonly referred to as CSA Certificate\)](#)
- [CE Certificate](#)
- [Certificate 1, Misc](#)
- [Certificate 2, Misc](#)
- [Certificate 3, Misc](#)
- [Certificate 4, Misc](#)
- [IEC Ex Certificate \(International Explosion Proof\)](#)
- [MSDS \(Material Safety Data Sheet\)](#)
- [Operations Manual](#)
- [RoHS Certificate \(Restriction of Hazardous Substances\)](#)
- [SpecSheetFrench](#)
- [SpecSheetSpanish](#)
- [STEP File \(3D CAD Model\)](#)
- [USA NEC Certificate \(Commonly referred to as UL Certificate\)](#)
- [Wiring Diagram \(Online\)](#)
- [HigResPic1](#)
- [HigResPic2](#)
- [HigResPic3](#)
- [HigResPic4](#)
- [HigResPic5](#)
- [HigResPic6](#)
- [HigResPic7](#)
- [HigResPic8](#)
- [HigResPic9](#)
- [ISO 9001 Certification](#)
- [Business Certificate](#)